



CEMENT BOND LOG

Mesa Wireline

| | | | |
|--------------------------------------|----------------------------|---------------------------------------|--|
| Company | ENCANA OIL & GAS (USA) INC | | |
| Well | KUNER 42-25 | | |
| Field | WATTENBERG | | |
| County | WELD | | |
| State | COLORADO | | |
| Company ENCANA OIL & GAS (USA) INC | | Well KUNER 42-25 | |
| Field WATTENBERG | | County WELD | |
| State COLORADO | | Location: API #: 05-123-30813-0000 | |
| Permanent Datum GROUND LEVEL | | Log Measured From KELLY BUSHING = 12' | |
| Drilling Measured From KELLY BUSHING | | Elevation | |
| SEC. 25 TWP. 5N RGE. 64W | | K.B. 4598' | |
| SHL: 1258' FNL & 248' FEL | | D.F. 4697' | |
| BHL: 1969' FNL & 656' FEL | | G.L. 4586' | |

| | | | | | |
|------------------------|--------------|-------------|-------|--------|--------|
| Date | 30 JULY 2011 | ONE | | | |
| Run Number | | ONE | | | |
| Depth Driller | | 7318' | | | |
| Depth Logger | | 7310' | | | |
| Bottom Logged Interval | | 7310' | | | |
| Top Log Interval | | 4650' | | | |
| Open Hole Size | | 4.5" | | | |
| Type Fluid | | WATER | | | |
| Density / Viscosity | | ~8.3# | | | |
| Max. Recorded Temp. | | 255 DEG F | | | |
| Estimated Cement Top | | 4740' | | | |
| Time Well Ready | | N/A | | | |
| Time Logger on Bottom | | N/A | | | |
| Equipment Number | | 10901 PRA10 | | | |
| Location | | AULT.CO | | | |
| Recorded By | | Z.EMICK | | | |
| Witnessed By | | T.MAJORS | | | |
| Borehole Record | | | | | |
| Run Number | Bit | From | To | Size | Weight |
| ONE | 12.25" | 0' | 820' | | |
| TWO | 8.875" | 0' | 7340' | | |
| Tubing Record | | | | | |
| Casing Record | Size | Weight | Top | Bottom | |
| Surface String | 8.625" | 24# | 0' | 800' | |
| Prot. String | | | | | |
| Production String | 4.5" | 11.6# | 0' | 7318' | |
| Liner | | | | | |

<<< Fold Here >>>

All interpretations are opinions based on inferences from electrical or other measurements and we cannot and do not guarantee the accuracy or correctness of any interpretation, and we shall not, except in the case of gross or willful negligence on our part, be liable or responsible for any loss, costs, damages, or expenses incurred or sustained by anyone resulting from any interpretation made by any of our officers, agents or employees. These interpretations are also subject to our general terms and conditions set out in our current Price Schedule.

Comments

LOG NOT CORRELATED TO ANY OTHER LOG
SHORT JOINT 6344'-6366'

WE APPRECIATE YOUR BUSINESS, MESA WIRELINE LLC, GRAND JUNCTION CO. (970) 257-0458



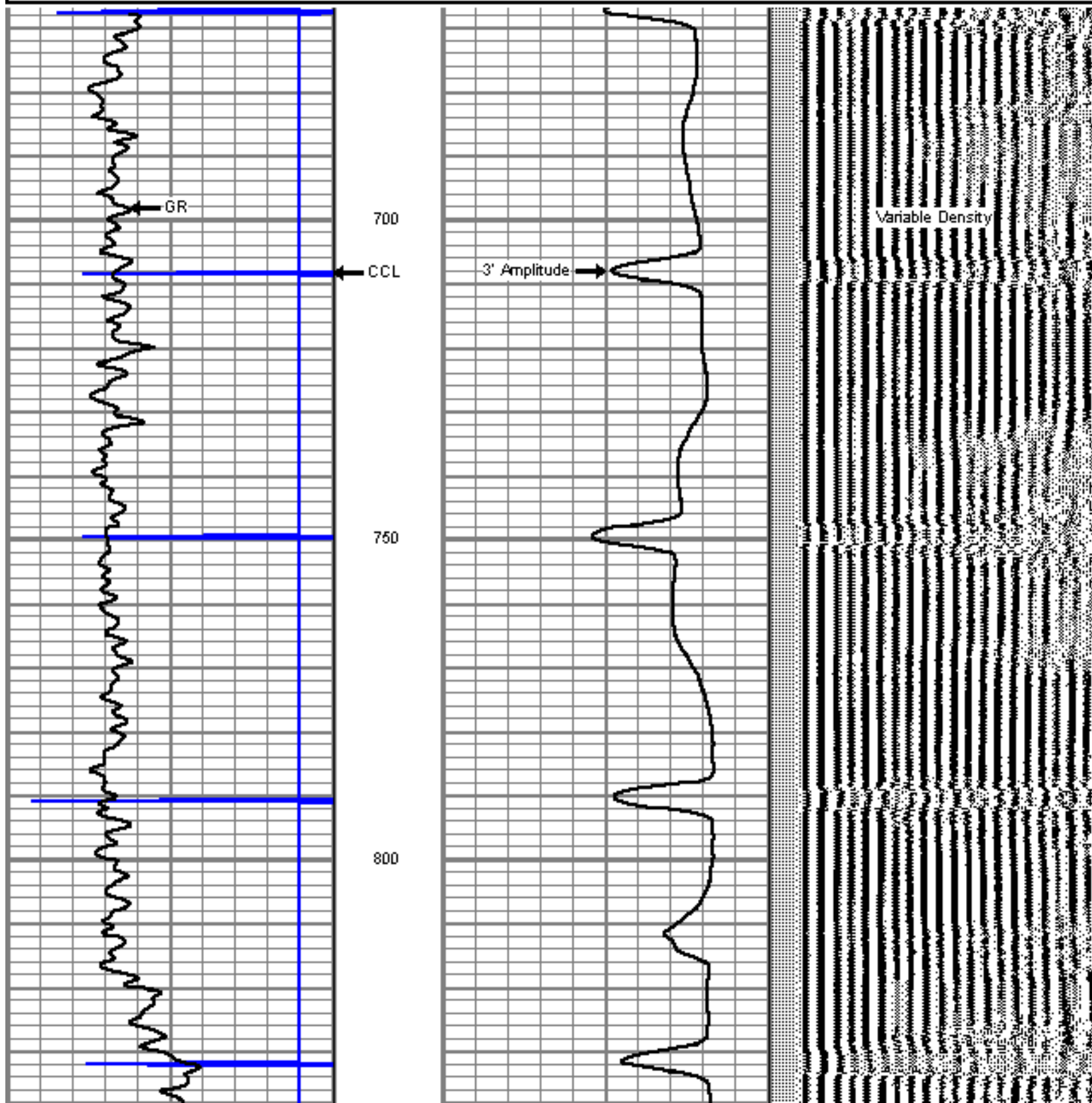
TOP REPEAT PASS

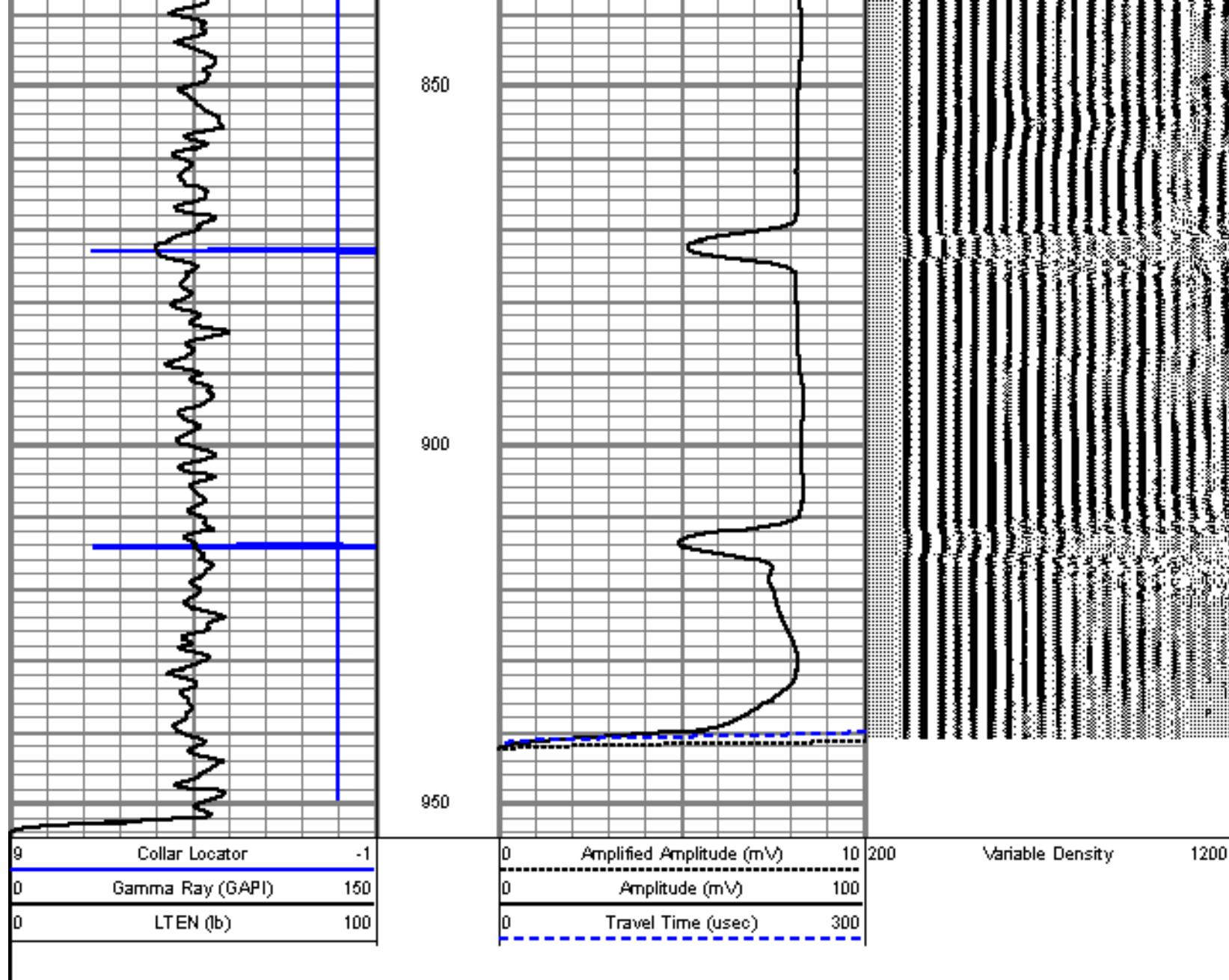
Database File: kuner 42-25.db
Dataset Pathname: pass10
Presentation Format: cbl01
Dataset Creation: Sat Jul 30 11:46:55 2011 by Log Std Casedhole 09061
Charted by: Depth in Feet scaled 1:240

| | | |
|---|------------------|-----|
| 9 | Collar Locator | -1 |
| 0 | Gamma Ray (GAPI) | 150 |
| 0 | LTEN (lb) | 100 |

| | | |
|---|--------------------------|-----|
| 0 | Amplified Amplitude (mV) | 10 |
| 0 | Amplitude (mV) | 100 |
| 0 | Travel Time (usec) | 300 |

200 Variable Density 1200

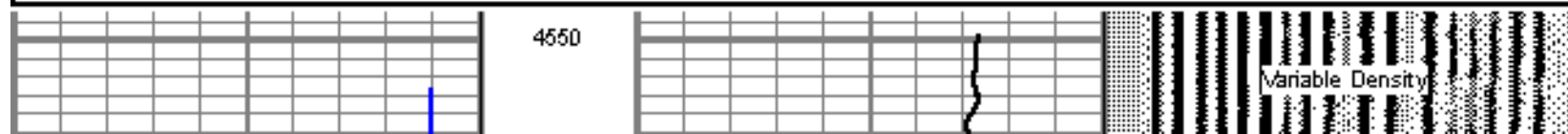
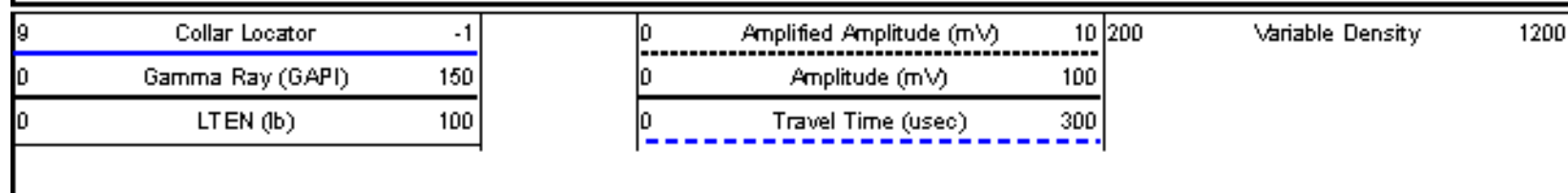


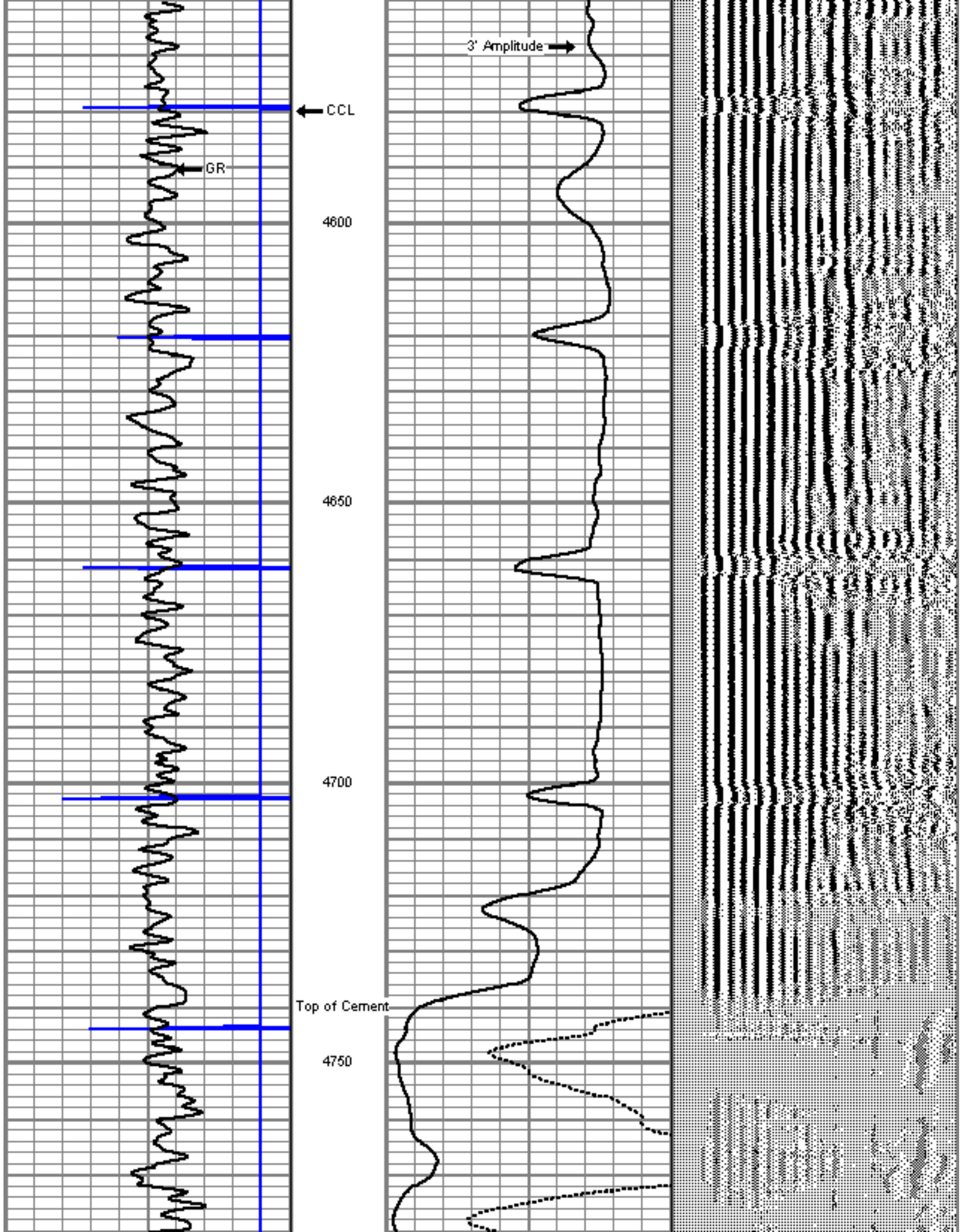


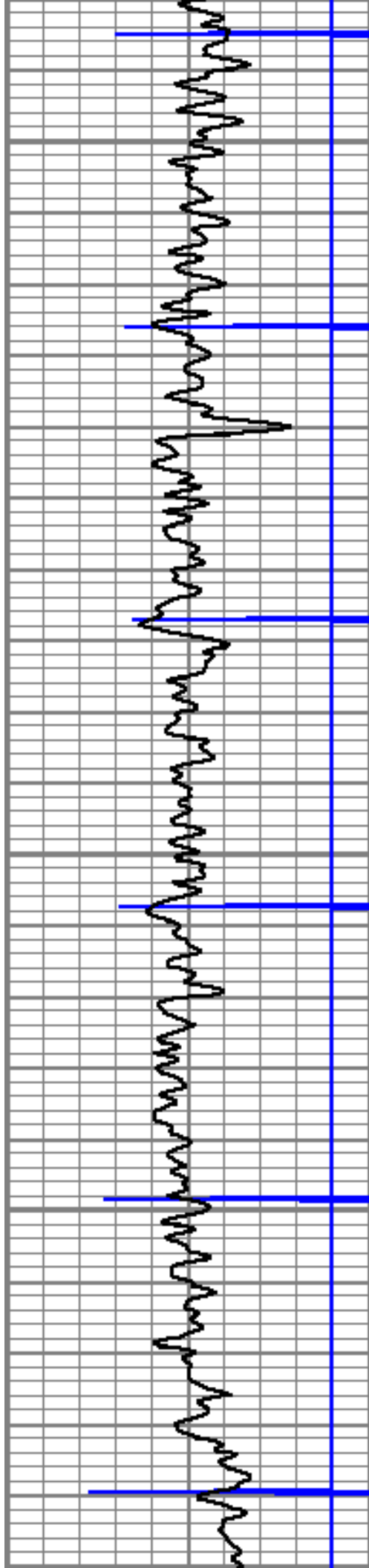
MAIN PASS

5" = 100'

Database File: kuner 42-25.db
 Dataset Pathname: pass9
 Presentation Format: cbl01
 Dataset Creation: Sat Jul 30 10:48:15 2011 by Log Std Casedhole 09061
 Charted by: Depth in Feet scaled 1:240







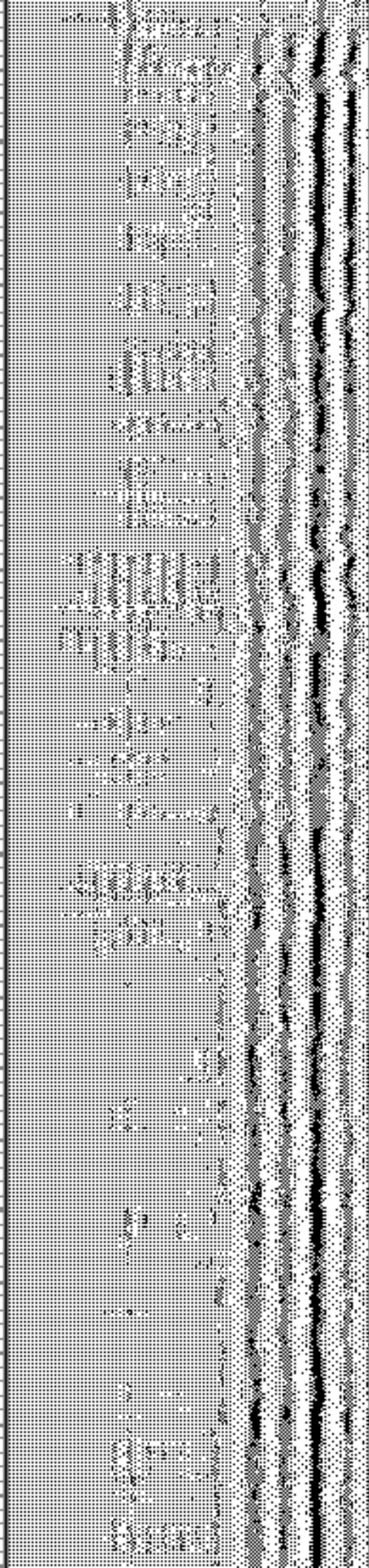
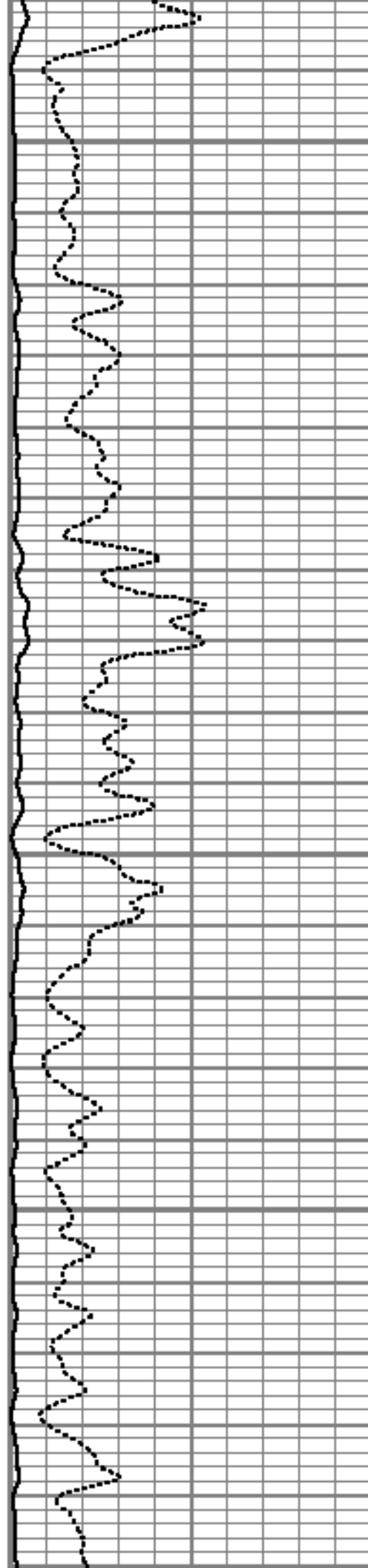
4800

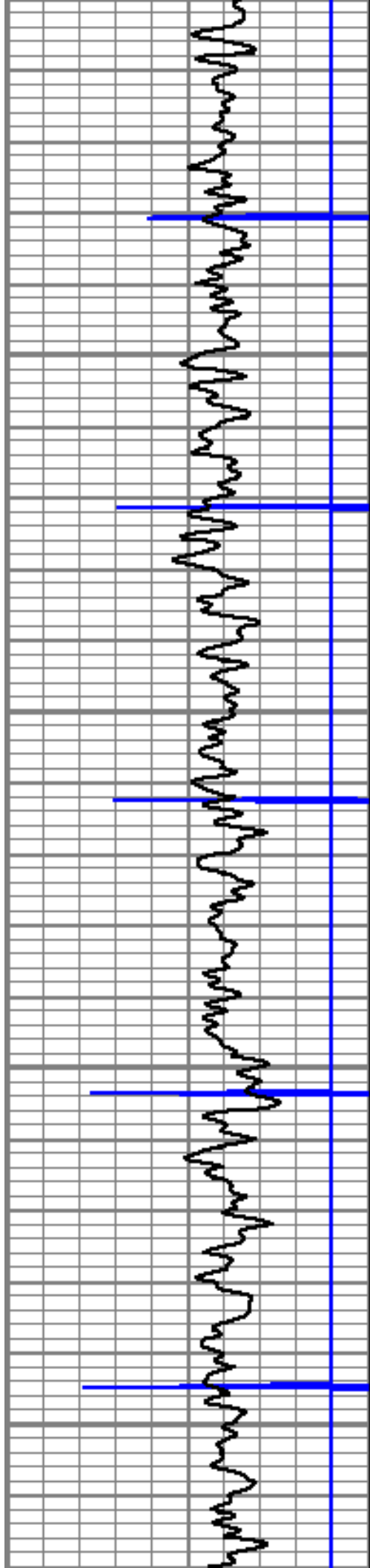
4850

4900

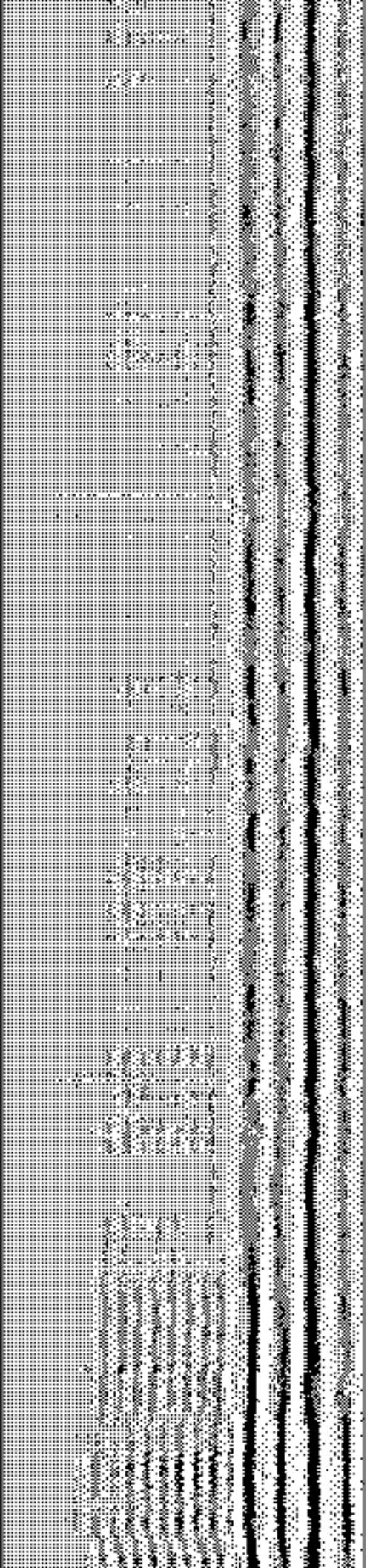
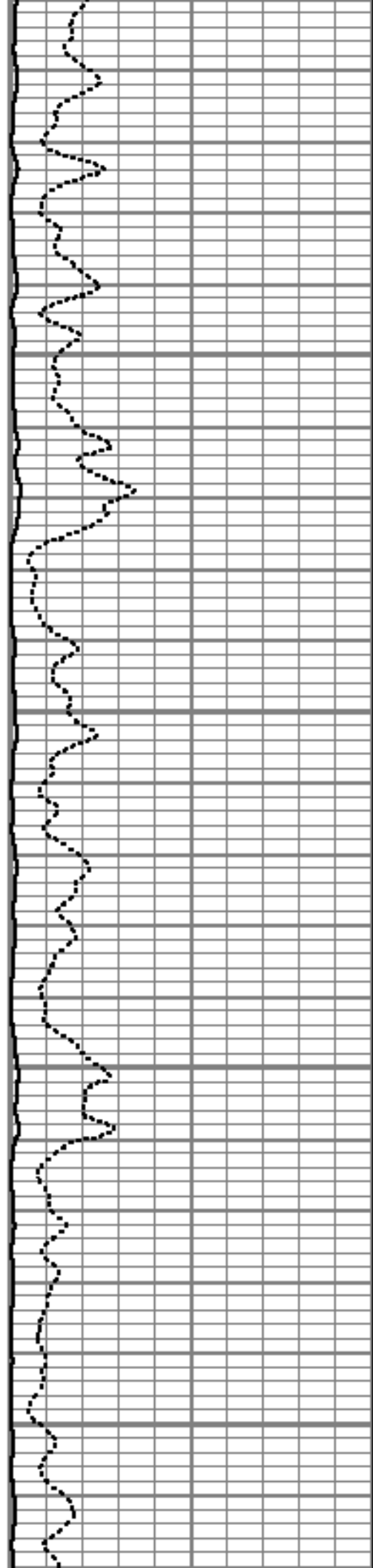
4950

5000





5000
5050
5100
5150
5200



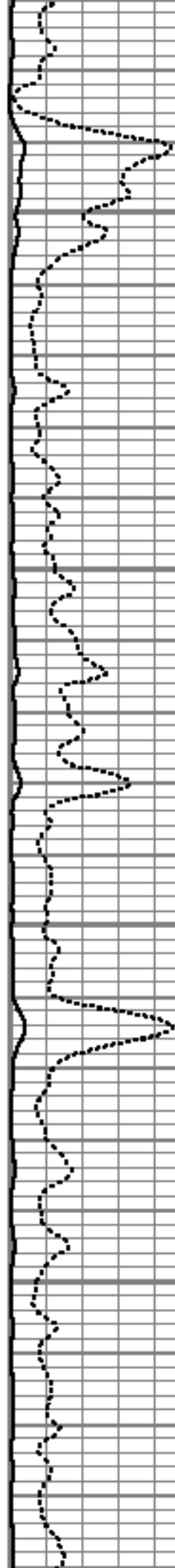


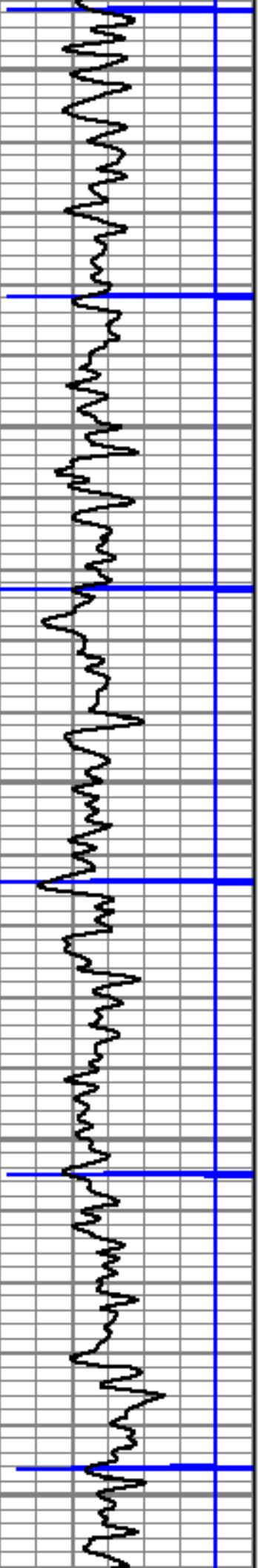
5250

5300

5350

5400





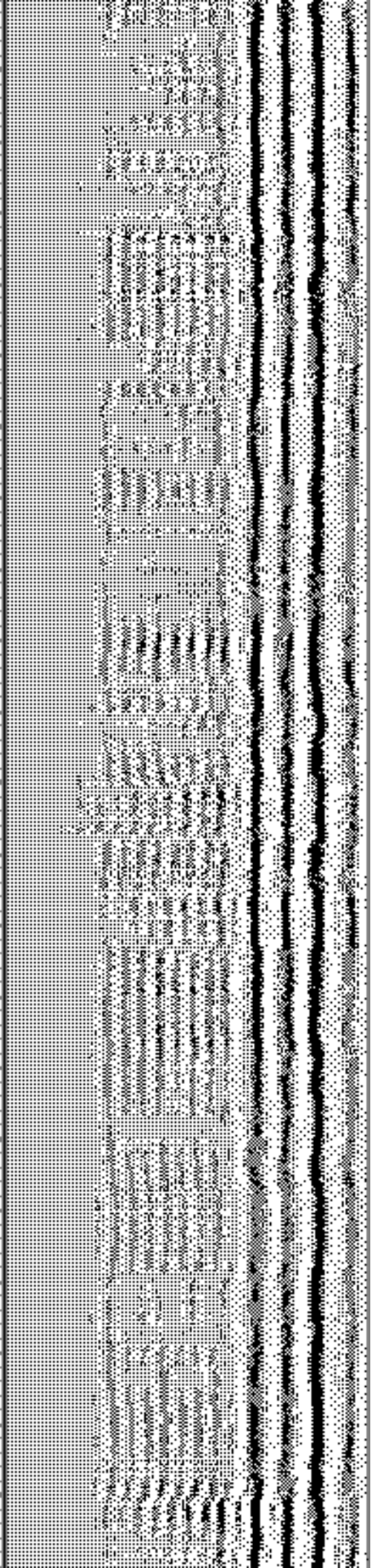
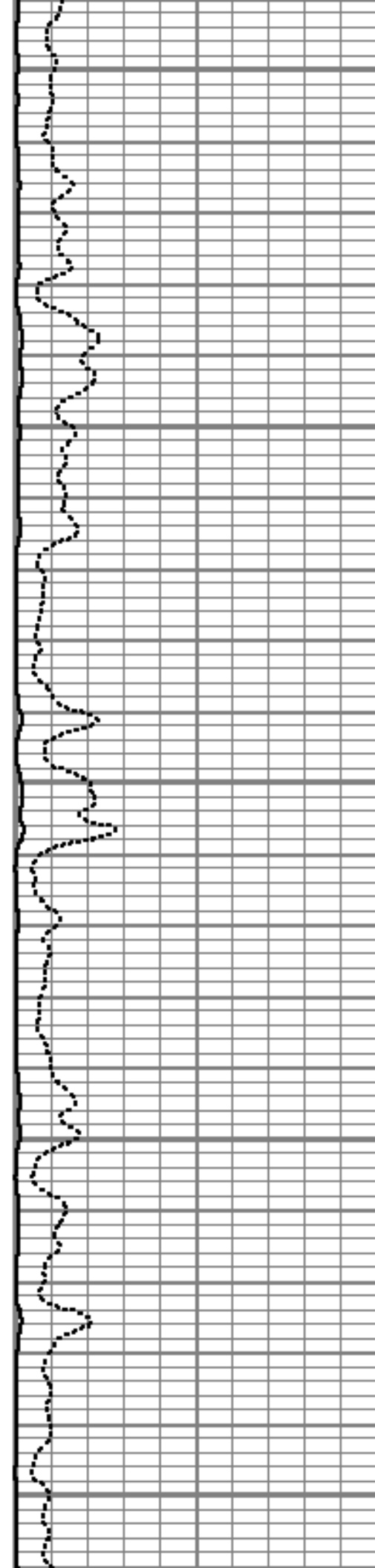
5450

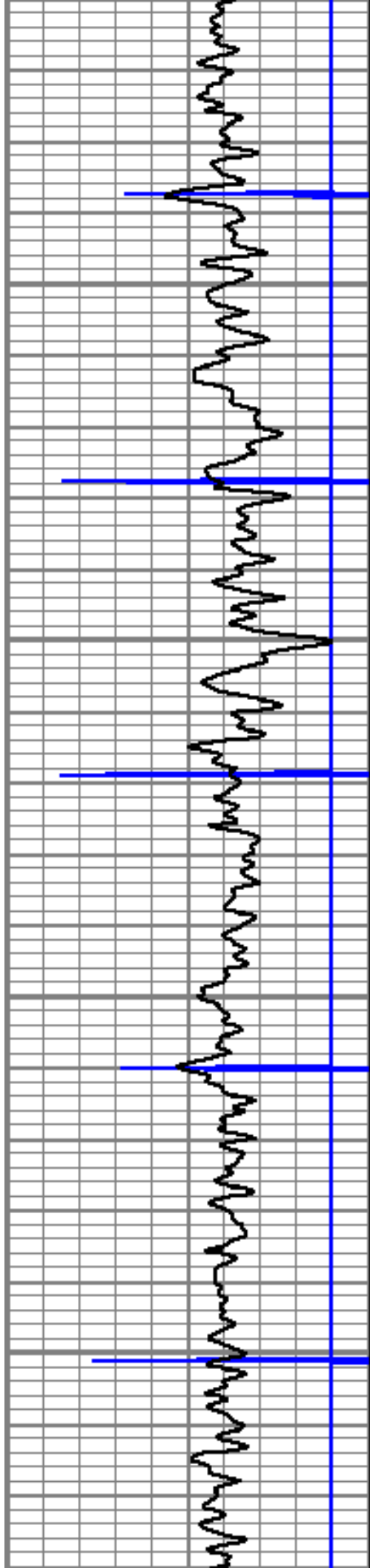
5500

5550

5600

5650



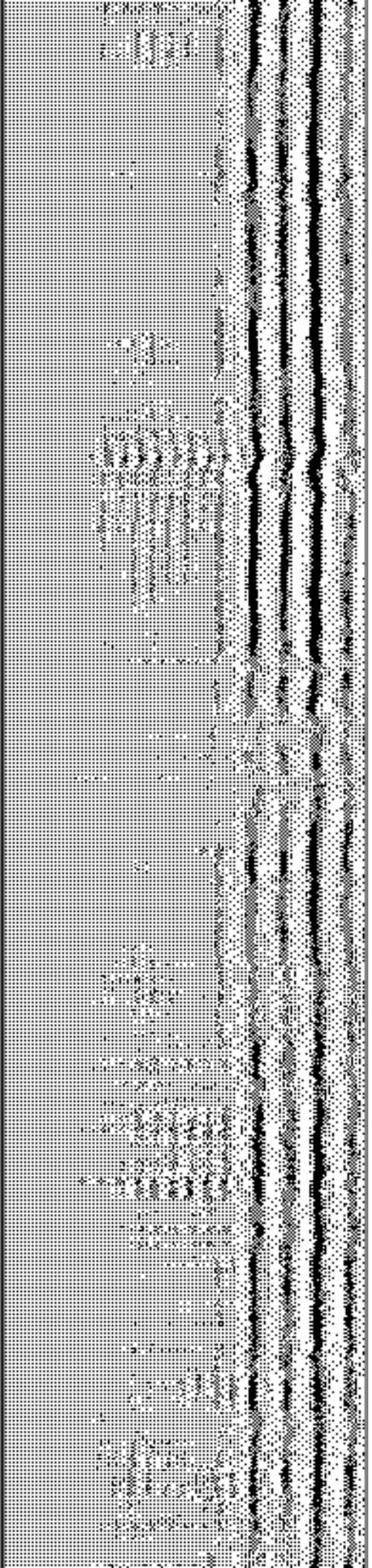
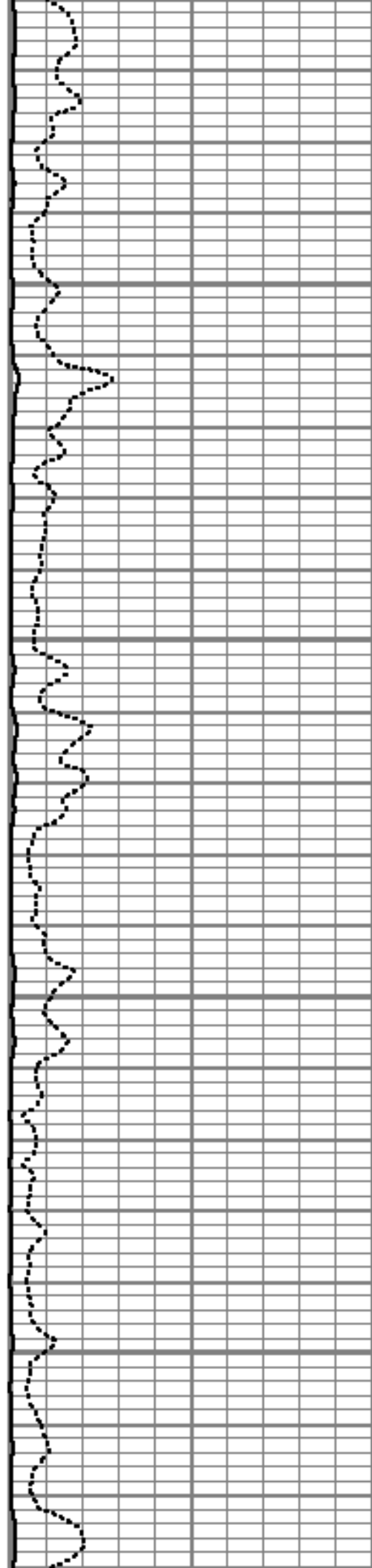


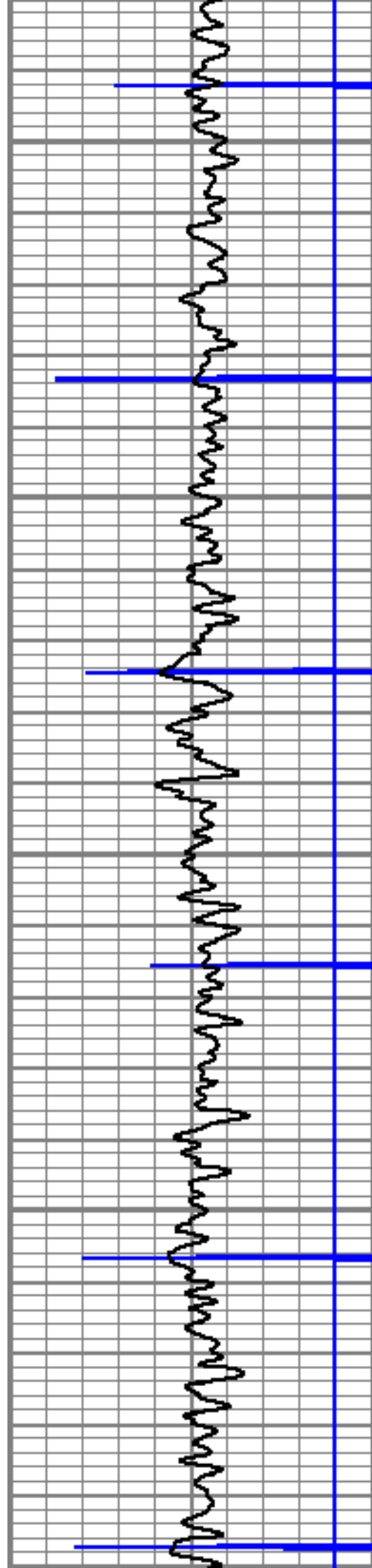
5700

5750

5800

5850





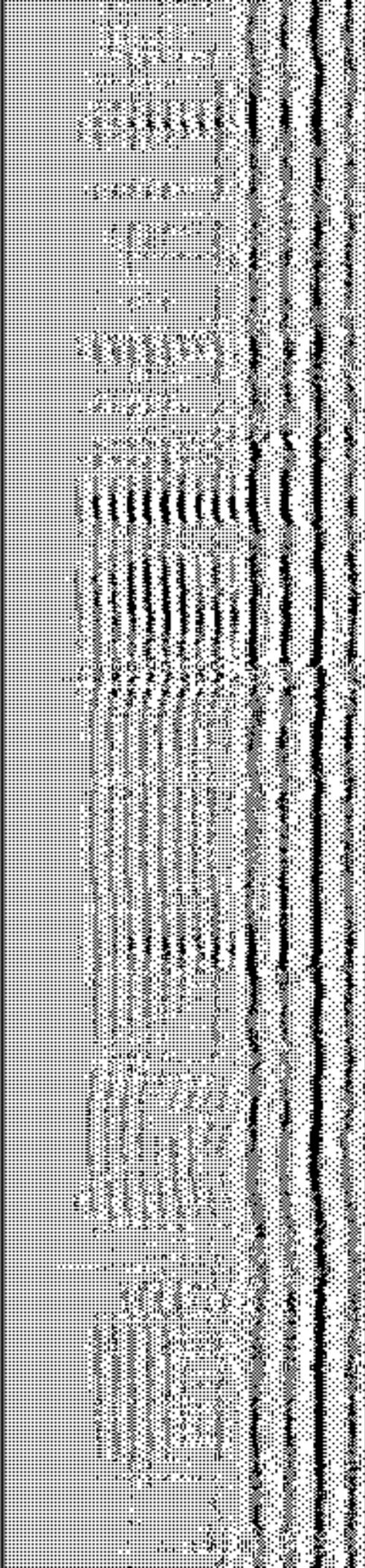
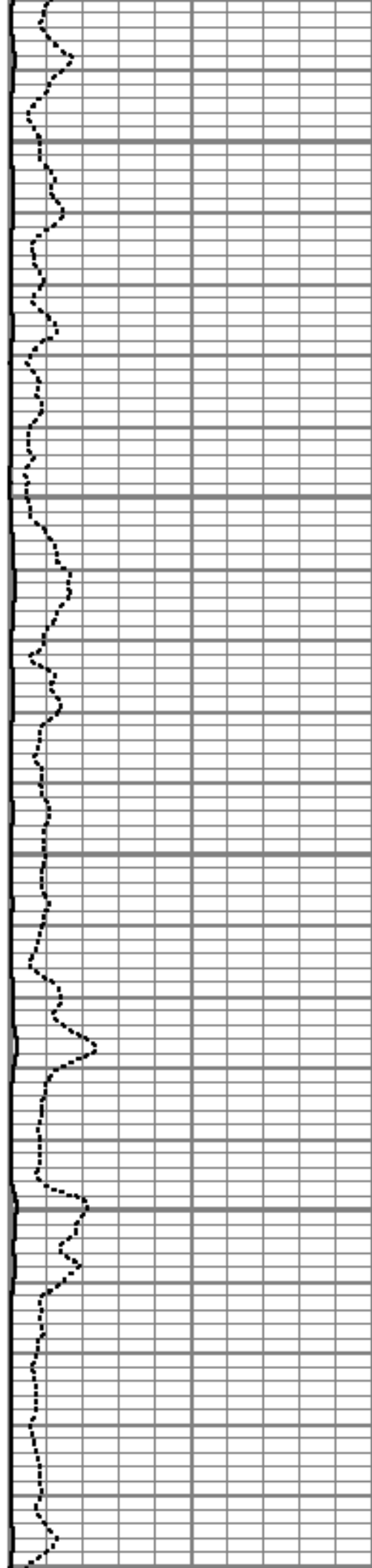
5900

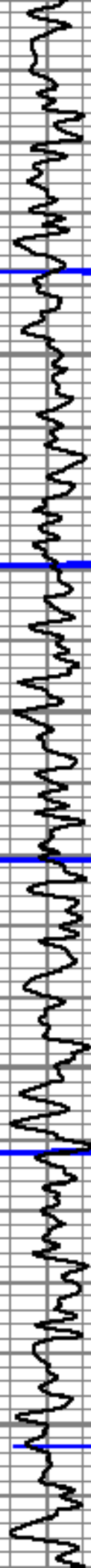
5950

6000

6050

6100



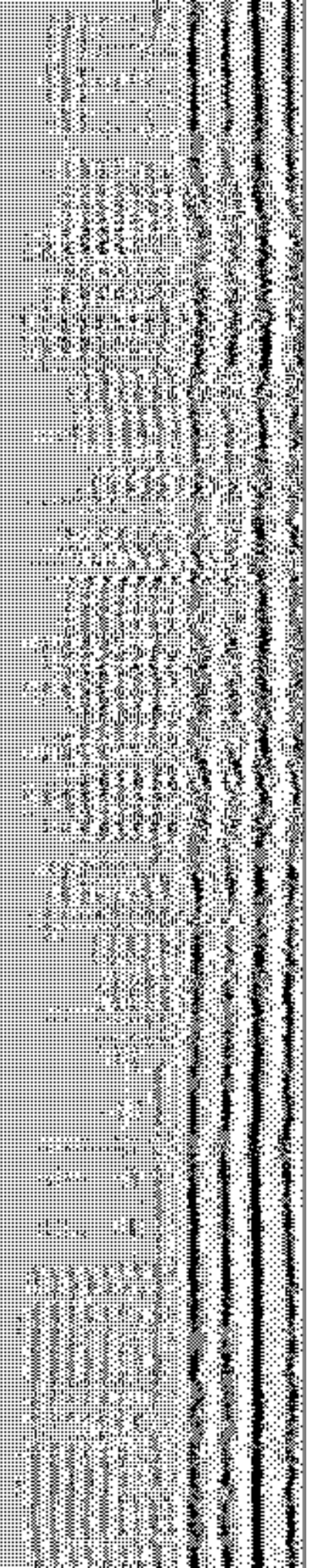
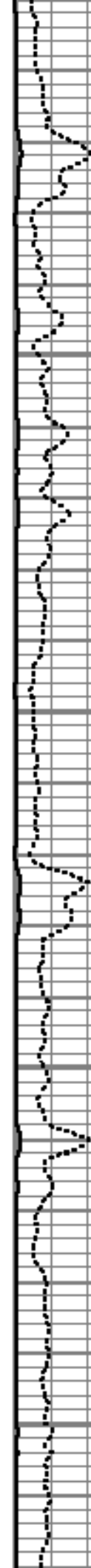


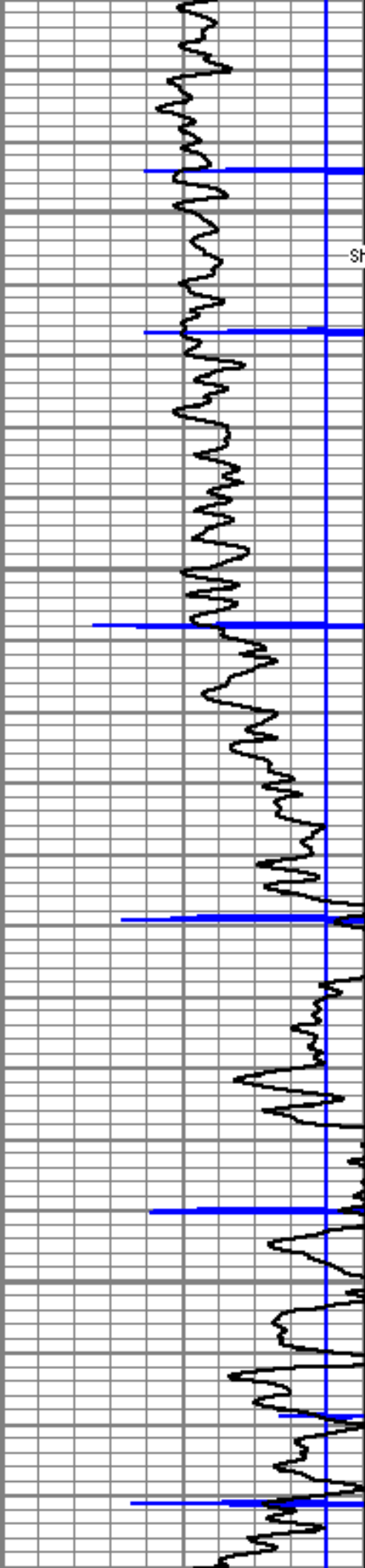
6150

6200

6250

6300



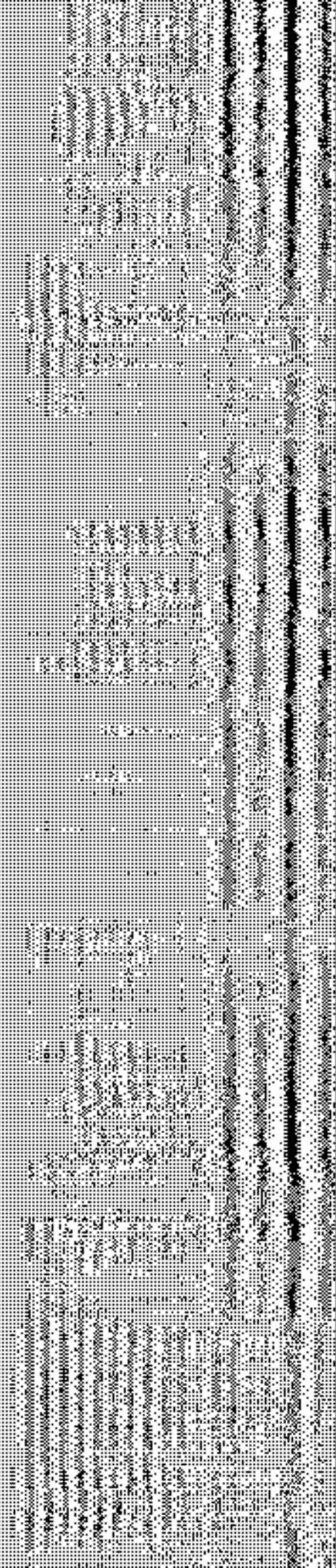
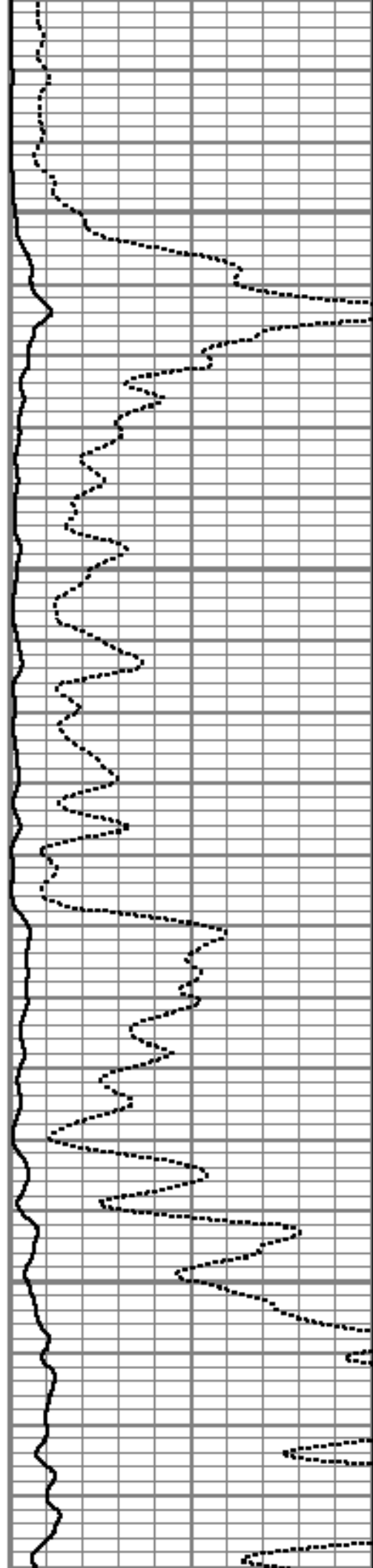


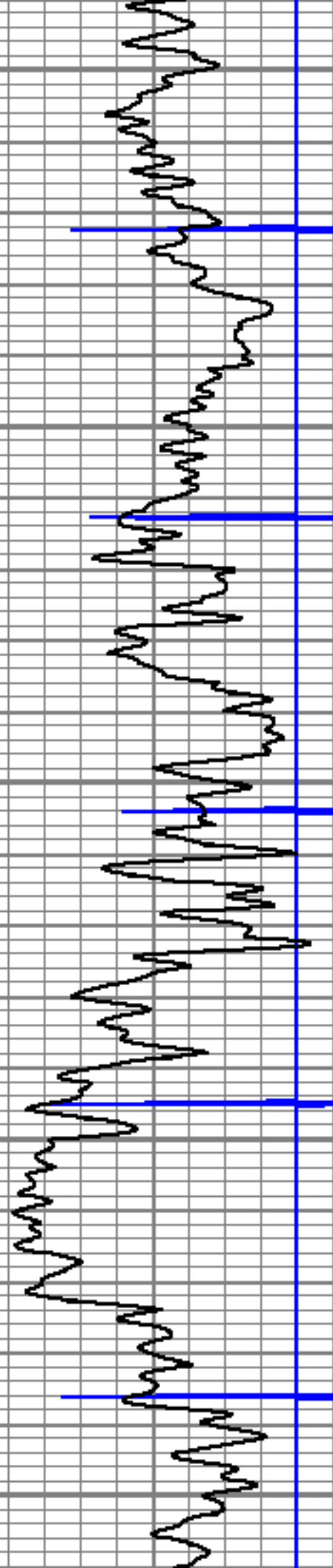
6350
Short Joint

6400

6450

6500





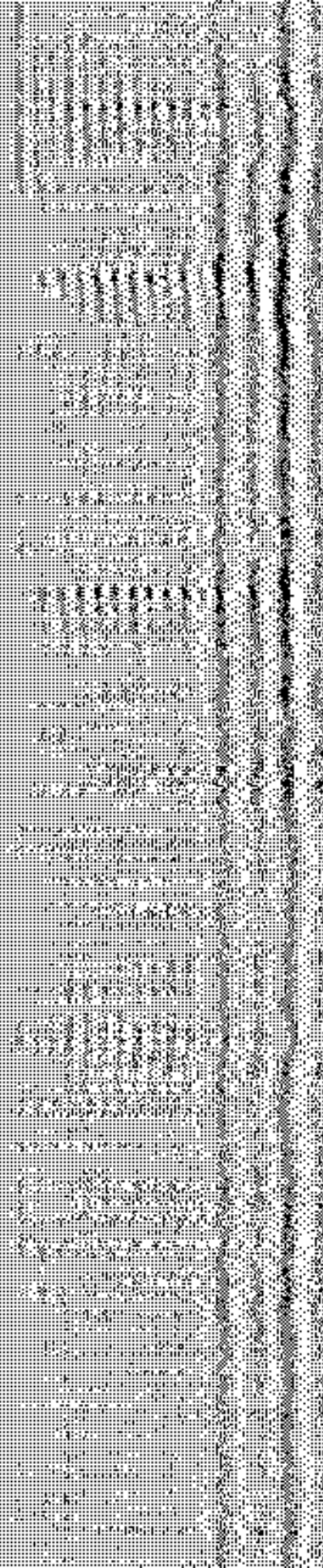
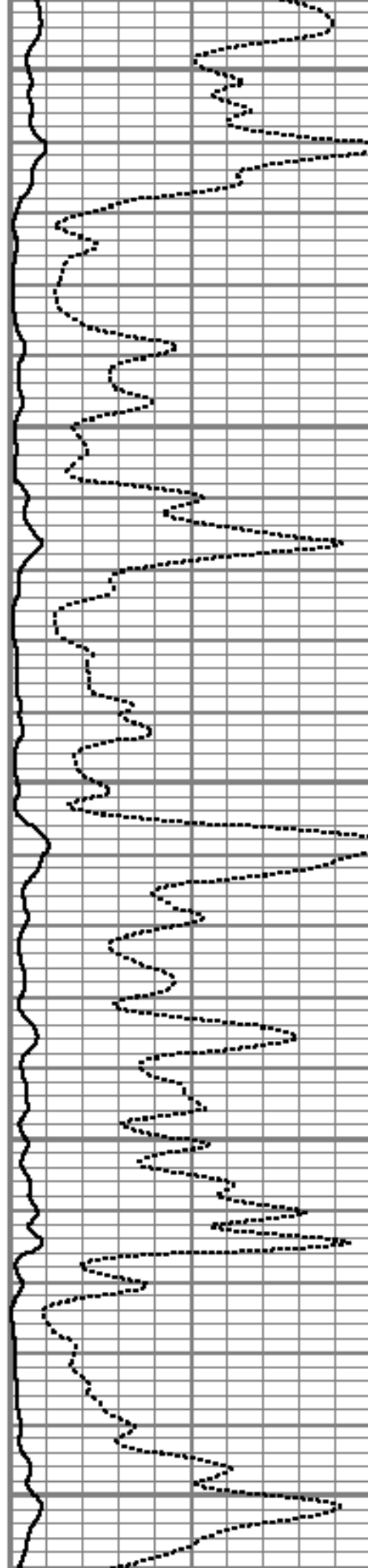
6550

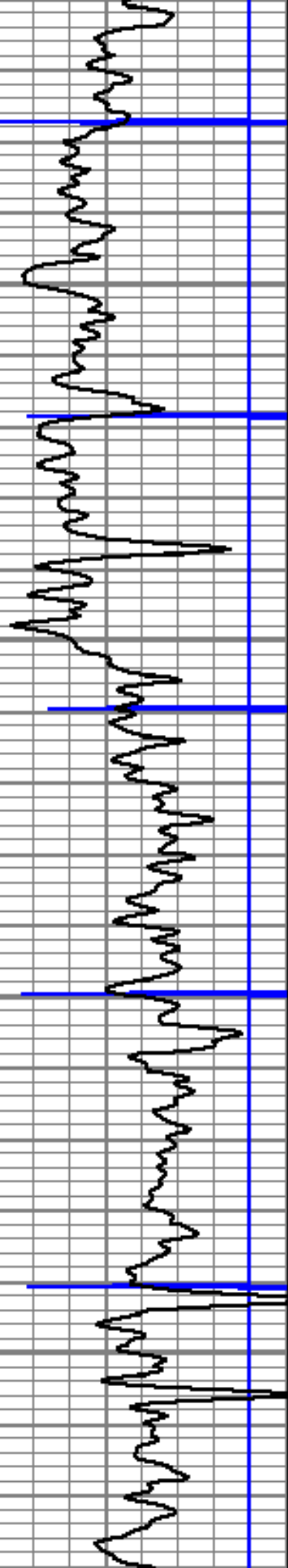
6600

6650

6700

6750



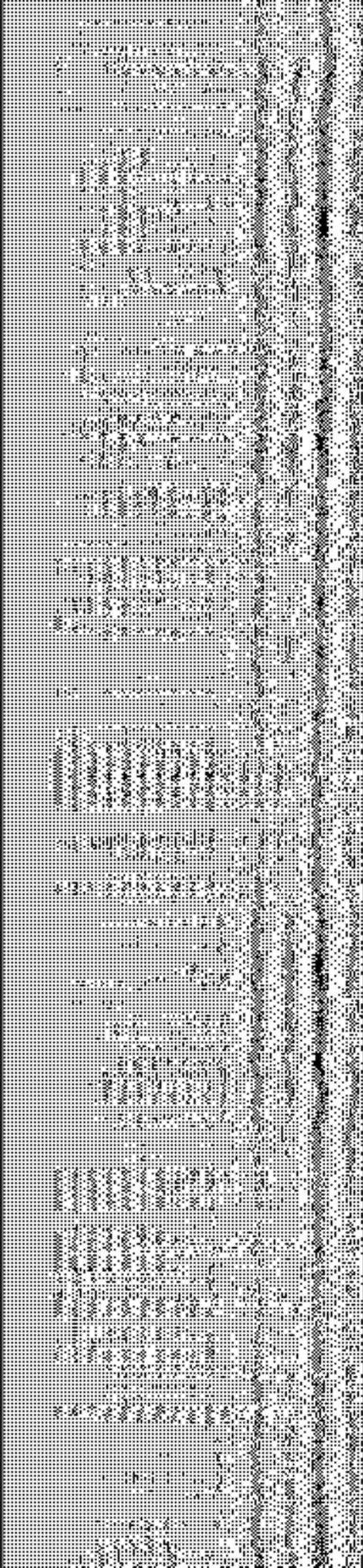
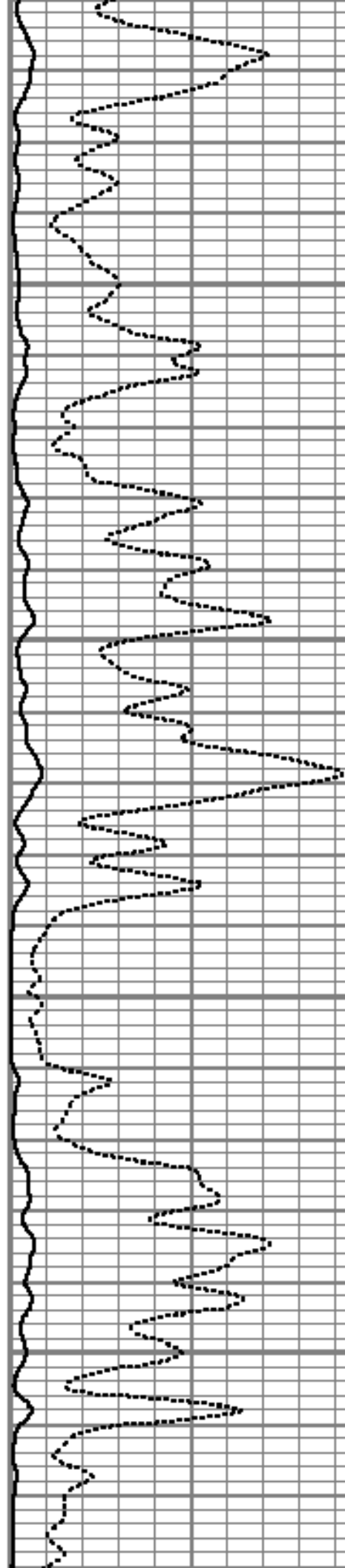


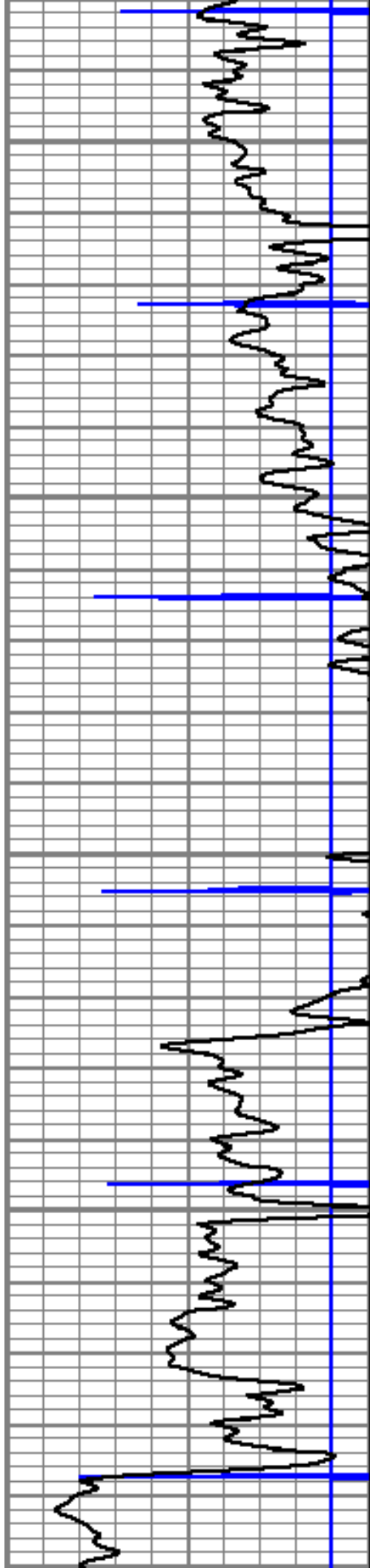
6800

6850

6900

6950





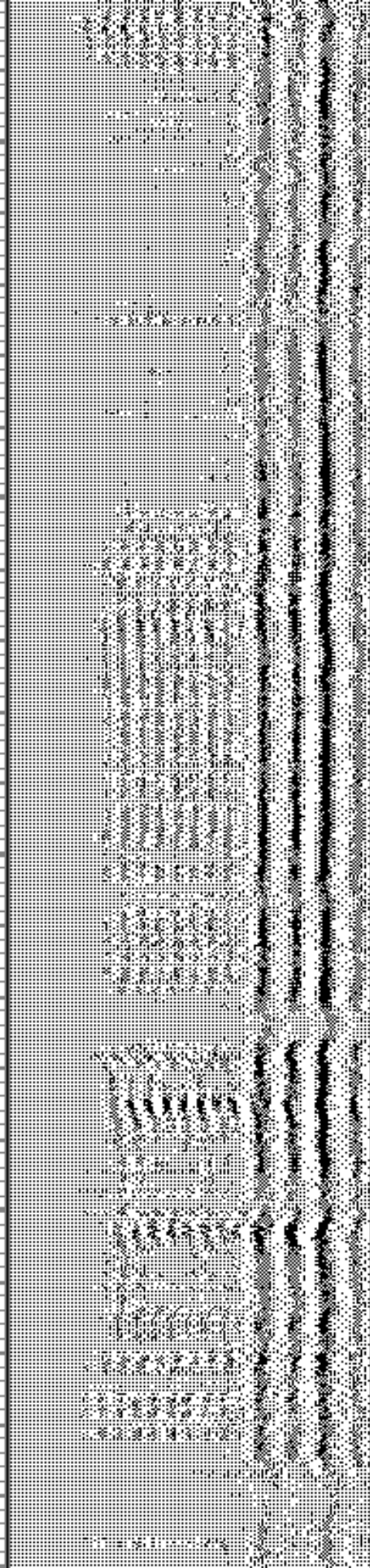
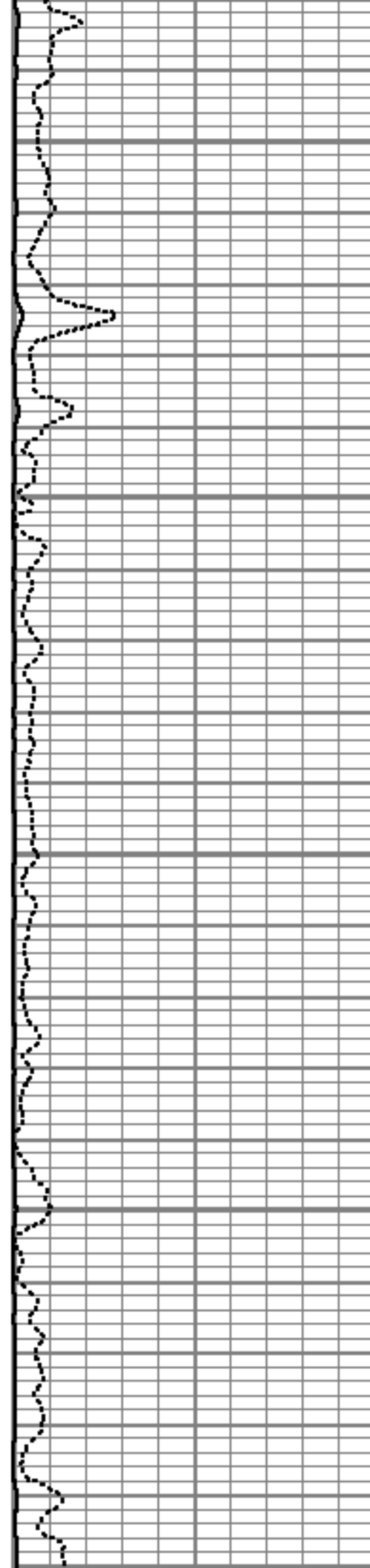
7000

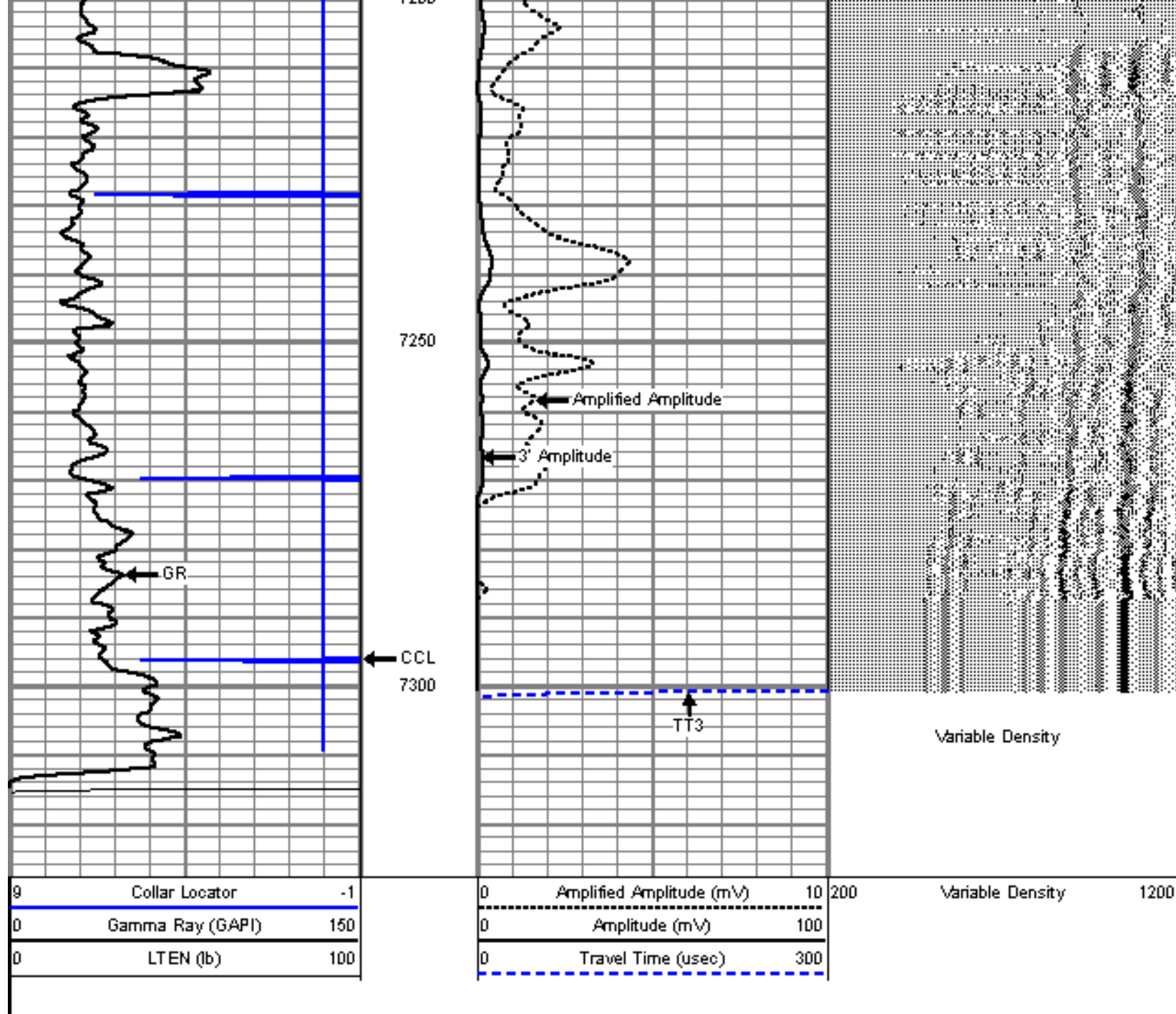
7050

7100

7150

7200



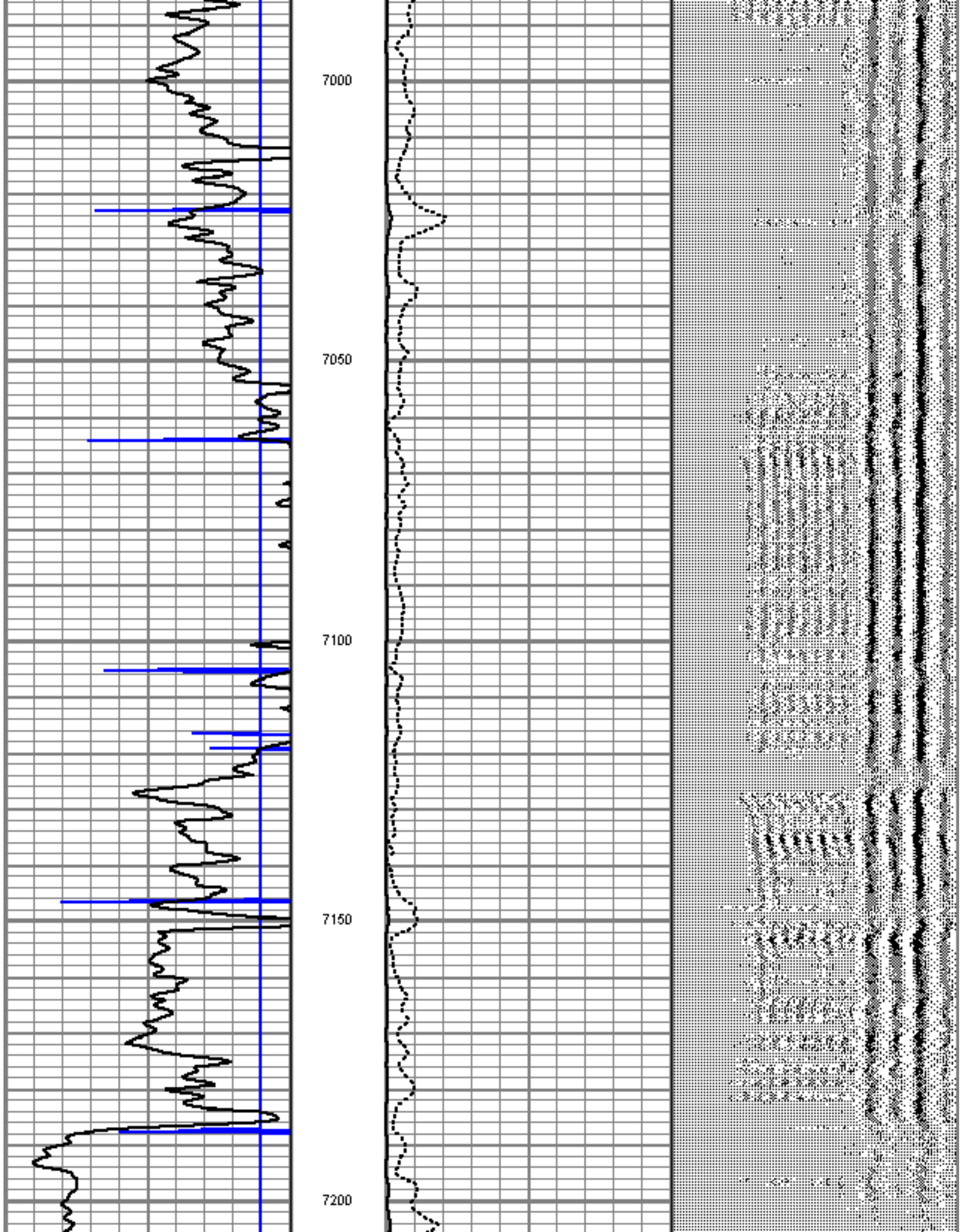


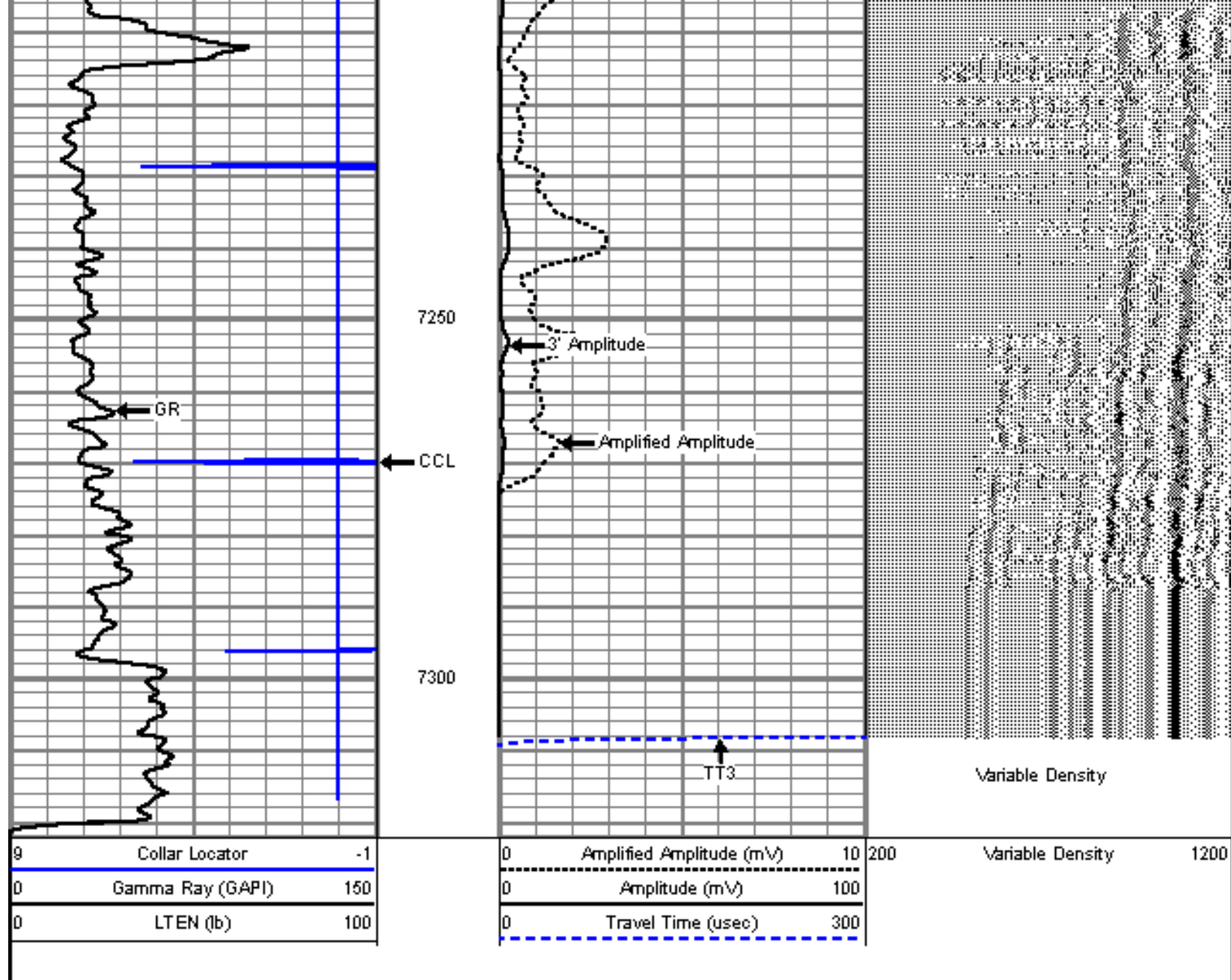
REPEAT PASS

5" = 100'

Database File: kuner 42-25.db
 Dataset Pathname: pass8
 Presentation Format: cbl01
 Dataset Creation: Sat Jul 30 10:38:25 2011 by Log Std Casedhole 09061
 Charted by: Depth in Feet scaled 1:240

| | | | | | | | | |
|---|------------------|-----|---|--------------------------|-----|-----|------------------|------|
| 9 | Collar Locator | -1 | 0 | Amplified Amplitude (mV) | 10 | 200 | Variable Density | 1200 |
| 0 | Gamma Ray (GAPI) | 150 | 0 | Amplitude (mV) | 100 | | | |
| 0 | LTEN (lb) | 100 | 0 | Travel Time (usec) | 300 | | | |





Company
Well
Field
County
State

ENCANA OIL & GAS (USA) INC
KUNER 42-25
WATTENBERG
WELD
COLORADO