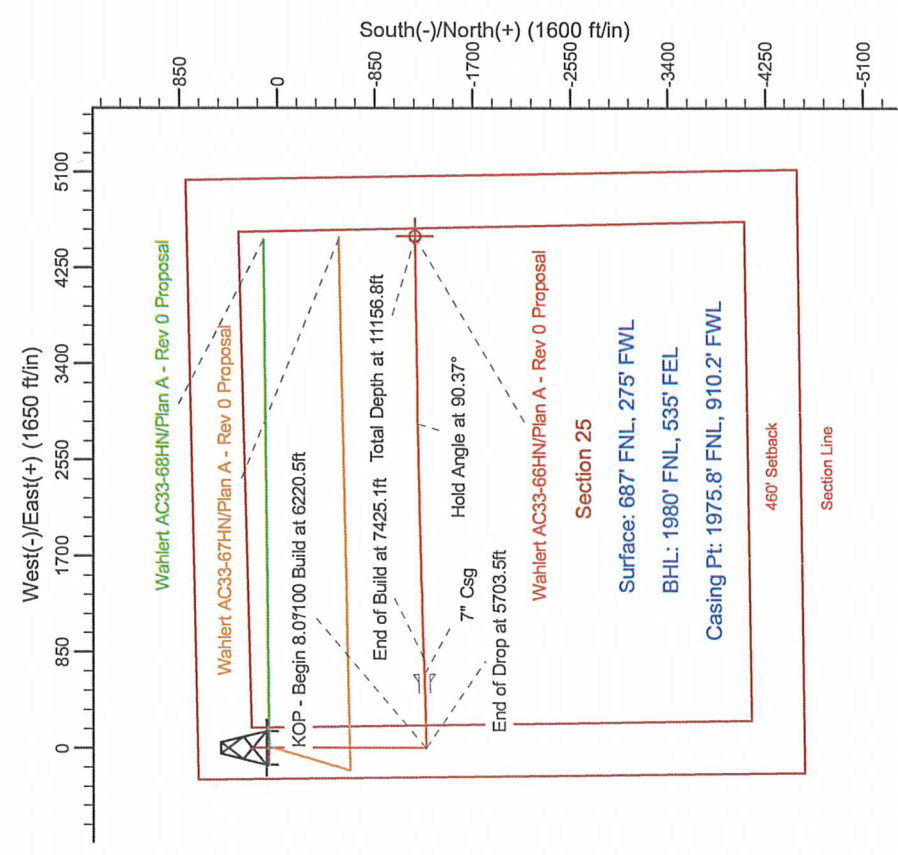
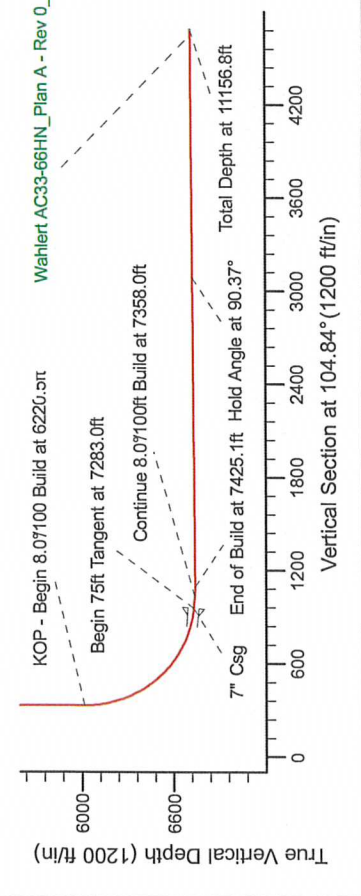
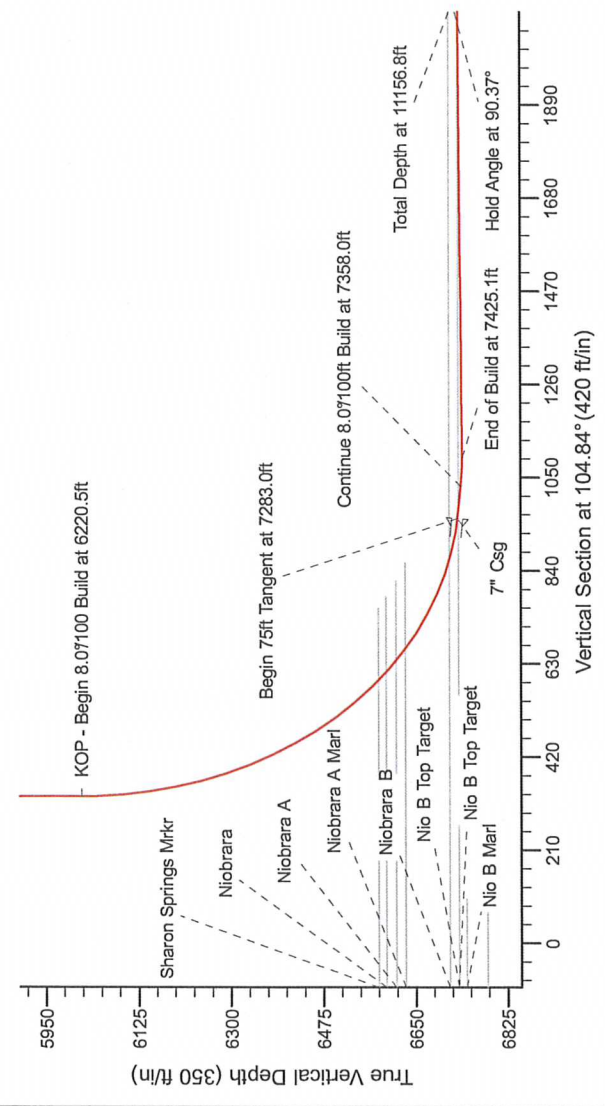


Project: Weld County Colorado (NAD 83)
Site: Sec.33, T7N, R63N
Well: Wahler AC33-66HN
Wellbore: Plan A - Rev 0 (PERMITTING PLAN ONLY)
Design: Plan A - Rev 0 Proposal

SECTION DETAILS

Sec	MD	Inc	Azi	TVD	+N/-S	+E/-W	Dleg	TFace	Vsect	Target
1	0.0	0.00	0.00	0.0	0.0	0.0	0.00	0.00	0.0	
2	1000.0	0.00	0.00	1000.0	0.0	0.0	0.00	0.00	0.0	
3	1765.2	19.13	180.00	1751.1	-126.6	0.0	2.50	180.00	32.4	
4	4938.3	19.13	180.00	4748.9	-1166.4	0.0	0.00	0.00	298.8	
5	5703.5	0.00	0.00	5500.0	-1293.0	0.0	2.50	180.00	331.2	
6	6220.5	0.00	0.00	6017.0	-1293.0	0.0	0.00	0.00	331.2	
7	7283.0	85.00	88.40	6730.5	-1274.7	663.5	8.00	88.40	958.2	
8	7358.0	85.00	88.40	6737.0	-1272.7	728.2	0.00	0.00	1029.9	
9	7425.1	90.37	88.40	6739.7	-1270.8	795.2	8.00	0.00	1094.2	
10	11156.8	90.37	89.41	6715.8	-1199.3	4526.1	0.03	90.24	4682.3	

Wahler AC33-66HN_Plan A - Rev 0_BHL Tgt-



WELL DETAILS: Wahler AC33-66HN(NAD 83 Geodetic System)			
Ground Level:	4782.0	Longitude	104°27' 0.864 W
Northing	438815.23	Easting	40°32' 8.088 N
Plan: Plan A - Rev 0 Proposal (Wahler AC33-66HN/Plan A - Rev 0 (PERMITTING PLAN ONLY))			
Created By: Erasmo Mendoza		Date: 10/36, August 09 2011	

Magnetic North: 68°20'00" (1983)

Declination: 7.66°

Dip Angle: 67.22°

Field Strength: 55241.7

T G M

Grid North is 0.00° East of True North (Grid Convergence)

Magnetic North is 7.66° East of True North (Magnetic Convergence)

To convert to True North, add 7.66° to Magnetic North

To convert to Magnetic North, subtract 7.66° from True North

To convert to Grid North, add 7.66° to True North