

T6N, R92W, 6th P.M.

QUICKSILVER RESOURCES, INC.

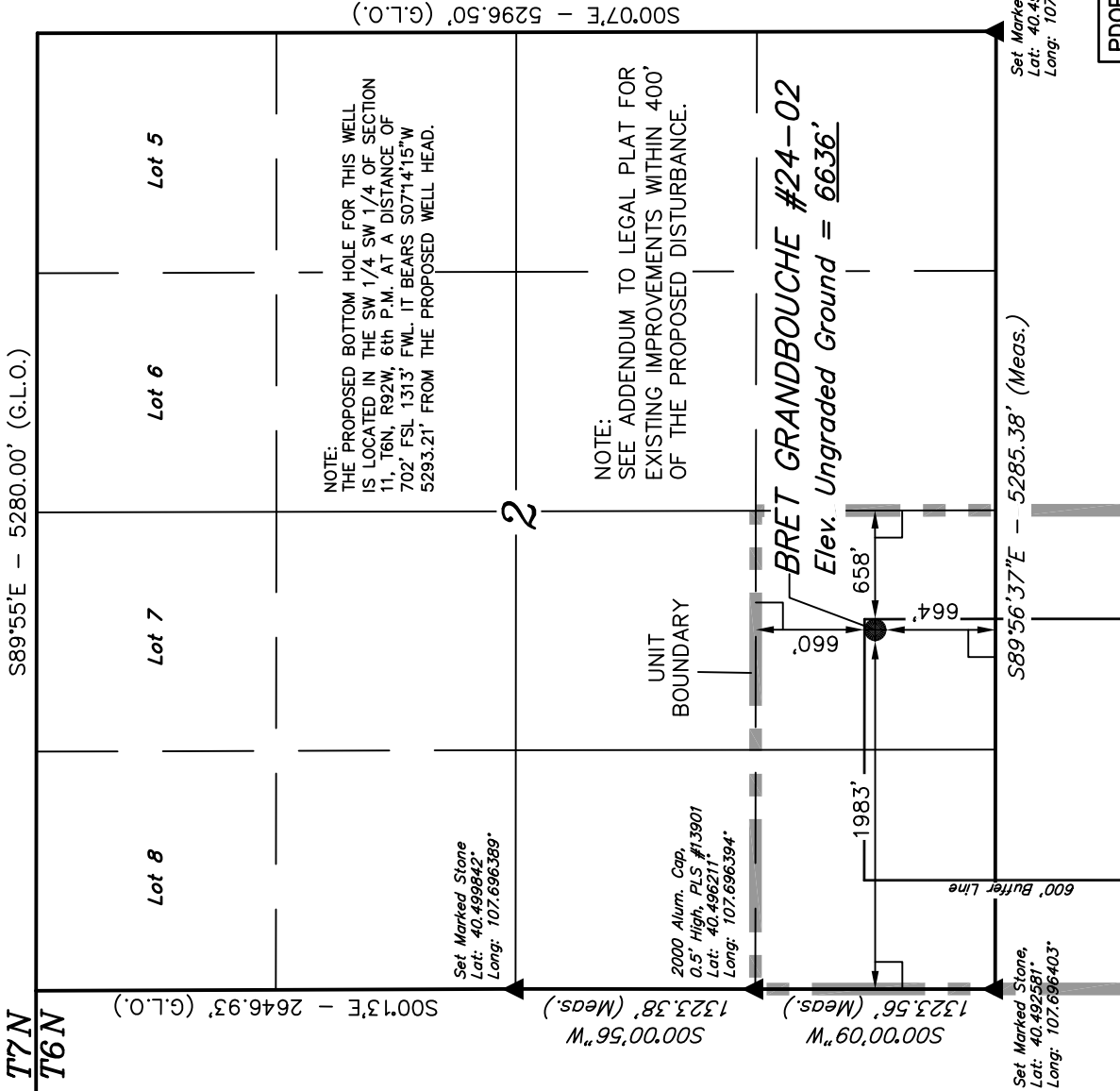
Well location, BRET GRANDBOUCHE #24-02H (SURFACE LOCATION), located as shown in the SE 1/4 SW 1/4 of Section 2, T6N, R92W, 6th P.M., Moffat County, Colorado.

BASIS OF ELEVATION

SPOT ELEVATION LOCATED AT THE NORTHEAST CORNER OF SECTION 10, T6N, R93W, 6th. P.M., TAKEN FROM THE HORSE GULCH QUADRANGLE, COLORADO, MOFFAT COUNTY, 7.5 MINUTE QUAD. (TOPOGRAPHIC MAP) PUBLISHED BY THE UNITED STATES DEPARTMENT OF THE INTERIOR, GEOLOGICAL SURVEY. SAID ELEVATION IS MARKED AS BEING 6246 FEET.

BASIS OF BEARINGS

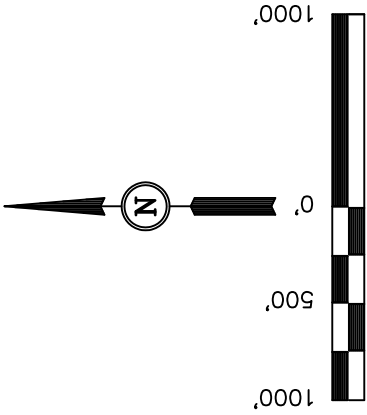
BASIS OF BEARINGS IS A G.P.S. OBSERVATION.



LEGEND:

- 90° SYMBOL
- PROPOSED WELL HEAD.
- SECTION CORNERS LOCATED.

PDOP=2.2	
NAD 83 (TOP OF NIobrara)	NAD 83 (SURFACE LOCATION)
LATITUDE = 40°29'39.80" (40.494389)	LATITUDE = 40°29'39.80" (40.494389)
LONGITUDE = 107°41'21.38" (107.689272)	LONGITUDE = 107°41'21.38" (107.689272)
NAD 27 (SURFACE LOCATION)	NAD 27 (SURFACE LOCATION)
LATITUDE = 40°29'39.90" (40.494417)	LATITUDE = 40°29'39.90" (40.494417)
LONGITUDE = 107°41'19.13" (107.688647)	LONGITUDE = 107°41'19.13" (107.688647)
STATE PLANE NAD 83	STATE PLANE NAD 83
N: 1430462.20 E: 2391175.93	N: 1430462.20 E: 2391175.93
STATE PLANE NAD 27	STATE PLANE NAD 27
N: 430461.12 E: 1391333.83	N: 430461.12 E: 1391333.83



CERTIFICATE

THIS IS TO CERTIFY THAT THE ABOVE PLAT WAS PREPARED FROM FIELD NOTES OF ACTUAL SURVEYS MADE BY ME OR UNDER MY SUPERVISION AND THAT THE SAME ARE TRUE AND CORRECT TO THE BEST OF MY KNOWLEDGE AND BELIEF.

REV: 08-15-11 K.O.
REV: 07-27-11 K.O.
REV: 07-18-11 M.D.
REV: 07-13-11 M.D.
REV: 06-20-11

REGISTERED LAND SURVEYOR
REGISTRATION NO. 17492
STATE OF COLORADO
08-15-11

UNTAAH ENGINEERING & LAND SURVEYING

85 SOUTH 200 EAST - VERNAL, UTAH 84078

(435) 789-1017

SCALE	DATE SURVEYED:	DATE DRAWN:
1" = 1000'	05-25-11	06-09-11
PARTY	REFERENCES	
M.A. C.K. K.O.	G.L.O. PLAT	
WEATHER	FILE	
COLD		
		QUICKSILVER RESOURCES, INC.

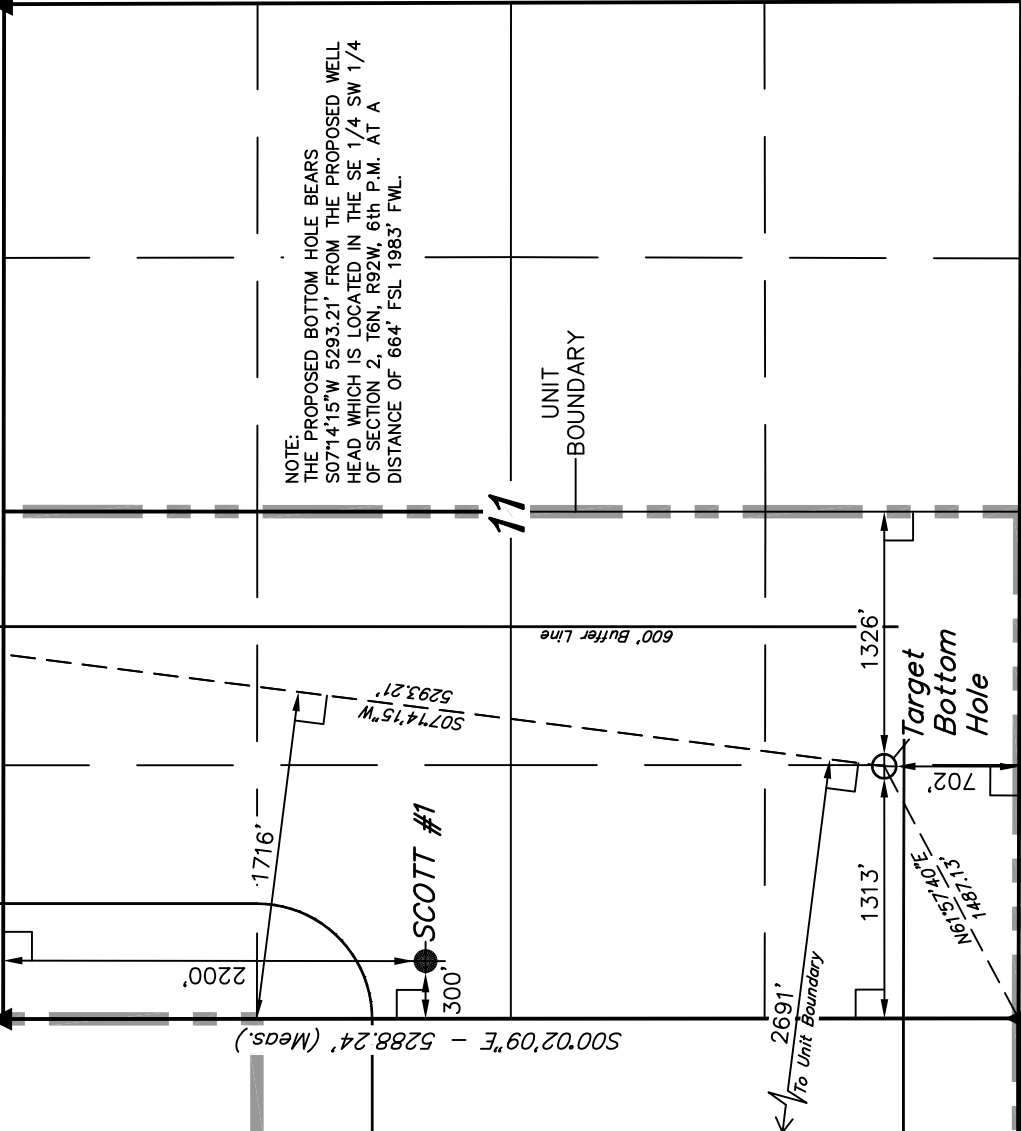
T6N, R92W, 6th P.M.

QUICKSILVER RESOURCES, INC.

BRET GRANDBOUCHE #24-02H
SURFACE LOCATION

Set Marked Stone,
Lat: 40.492581°
Long: 107.696403°

Set Marked Stone,
Lat: 40.492544°
Long: 107.677406°



Set Marked Stone
Lat: 40.478069°
Long: 107.696414°

LEGEND:

— = 90° SYMBOL

● = PROPOSED WELL HEAD.

▲ = SECTION CORNERS LOCATED.

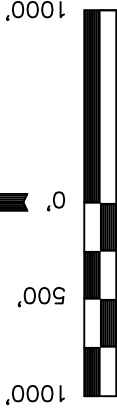
Well location, BRET GRANDBOUCHE #24-02H
(TARGET BOTTOM HOLE), located as shown in the
SW 1/4 SW 1/4 of Section 11, T6N, R92W, 6th
P.M., Moffat County, Colorado.

BASIS OF ELEVATION

SPOT ELEVATION LOCATED AT THE NORTHEAST CORNER OF
SECTION 10, T6N, R93W, 6th. P.M., TAKEN FROM THE HORSE
GULCH QUADRANGLE, COLORADO, MOFFAT COUNTY, 7.5
MINUTE QUAD. (TOPOGRAPHIC MAP) PUBLISHED BY THE
UNITED STATES DEPARTMENT OF THE INTERIOR, GEOLOGICAL
SURVEY. SAID ELEVATION IS MARKED AS BEING 6246 FEET.

BASIS OF BEARINGS

BASIS OF BEARINGS IS A G.P.S. OBSERVATION.



S C A L E

CERTIFICATE

THIS IS TO CERTIFY THAT THE ABOVE PLAT WAS PREPARED FROM
FIELD NOTES OF ACTUAL SURVEYS MADE BY ME OR UNDER MY
SUPERVISION AND THAT THE SAME ARE TRUE AND CORRECT TO THE
BEST OF MY KNOWLEDGE AND BELIEF.

REV: 08-15-11 K.O.
REV: 07-27-11 K.O.
REV: 07-18-11 M.D.
REV: 07-13-11 M.D.
REV: 06-20-11

REGISTERED LAND SURVEYOR
REGISTRATION NO. 17492
STATE OF COLORADO
08-15-11

UNTANH ENGINEERING & LAND SURVEYING

85 SOUTH 200 EAST - VERNAL, UTAH 84078

(435) 789-1017

SCALE	DATE SURVEYED:	DATE DRAWN:
1" = 1000'	05-25-11	06-09-11
PARTY	REFERENCES	
M.A. C.K. K.O.	G.L.O. PLAT	
WEATHER	FILE	
COLD		
		QUICKSILVER RESOURCES, INC.

NAD 83 (TARGET BOTTOM HOLE)
LATITUDE = 40°28'47.94" (40.479983)
LONGITUDE = 107°41'30.10" (107.691694)
NAD 27 (TARGET BOTTOM HOLE)
LATITUDE = 40°28'48.04" (40.480011)
LONGITUDE = 107°41'27.85" (107.691069)
STATE PLANE NAD 83
N: 1425232.05 E: 2390372.75
STATE PLANE NAD 27
N: 425230.99 E: 1390530.66

T6N, R92W, 6th P.M.

QUICKSILVER RESOURCES, INC.

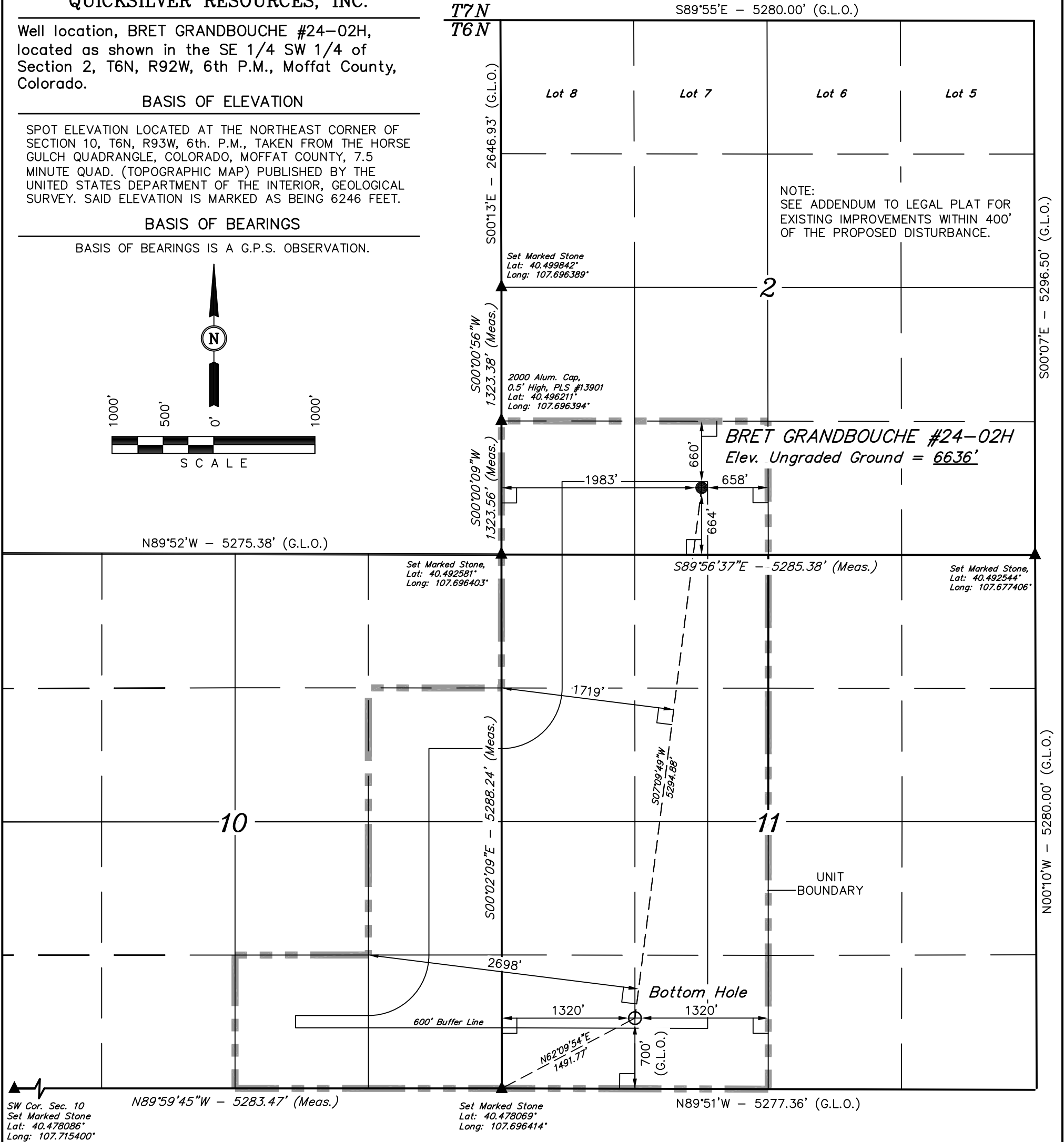
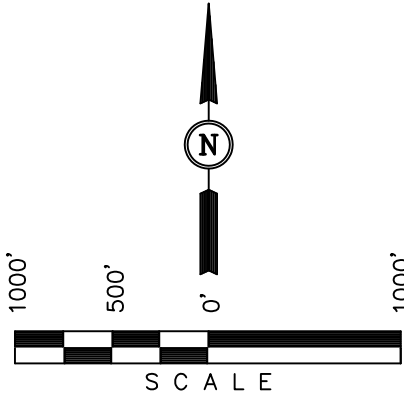
Well location, BRET GRANDBOUCHE #24-02H, located as shown in the SE 1/4 SW 1/4 of Section 2, T6N, R92W, 6th P.M., Moffat County, Colorado.

BASIS OF ELEVATION

SPOT ELEVATION LOCATED AT THE NORTHEAST CORNER OF SECTION 10, T6N, R93W, 6th. P.M., TAKEN FROM THE HORSE GULCH QUADRANGLE, COLORADO, MOFFAT COUNTY, 7.5 MINUTE QUAD. (TOPOGRAPHIC MAP) PUBLISHED BY THE UNITED STATES DEPARTMENT OF THE INTERIOR, GEOLOGICAL SURVEY. SAID ELEVATION IS MARKED AS BEING 6246 FEET.

BASIS OF BEARINGS

BASIS OF BEARINGS IS A G.P.S. OBSERVATION.



CERTIFICATE

THIS IS TO CERTIFY THAT THE ABOVE PLAT WAS PREPARED FROM FIELD NOTES OF ACTUAL SURVEYS MADE BY ME OR UNDER MY SUPERVISION AND THAT THE SAME ARE TRUE AND CORRECT TO THE BEST OF MY KNOWLEDGE AND BELIEF.

REV: 07-27-11 K.O.
REV: 07-18-11 M.D.
REV: 07-13-11 M.D.
REV: 06-20-11

REGISTERED LAND SURVEYOR
REGISTRATION NO. 17492
STATE OF COLORADO
09-27-11

UINTAH ENGINEERING & LAND SURVEYING
85 SOUTH 200 EAST - VERNAL, UTAH 84078
(435) 789-1017

PDOP=2.2

NAD 83 (TARGET BOTTOM HOLE)	NAD 83 (SURFACE LOCATION)
LATITUDE = 40°28'47.91" (40.479975)	LATITUDE = 40°29'39.80" (40.494389)
LONGITUDE = 107°41'30.01" (107.691669)	LONGITUDE = 107°41'21.38" (107.689272)
NAD 27 (TARGET BOTTOM HOLE)	NAD 27 (SURFACE LOCATION)
LATITUDE = 40°28'48.01" (40.480003)	LATITUDE = 40°29'39.90" (40.494417)
LONGITUDE = 107°41'27.76" (107.691044)	LONGITUDE = 107°41'19.13" (107.688647)
STATE PLANE NAD 83	STATE PLANE NAD 83
N: 1425229.37 E: 2390379.26	N: 1430462.20 E: 2391175.93
STATE PLANE NAD 27	STATE PLANE NAD 27
N: 425228.31 E: 1390537.17	N: 430461.12 E: 1391333.83

LEGEND:

- └─ = 90° SYMBOL
- = PROPOSED WELL HEAD.
- ▲ = SECTION CORNERS LOCATED.

SCALE 1" = 1000'	DATE SURVEYED: 05-25-11	DATE DRAWN: 06-09-11
PARTY M.A. C.K. K.O.	REFERENCES G.L.O. PLAT	
WEATHER COLD	FILE QUICKSILVER RESOURCES, INC.	