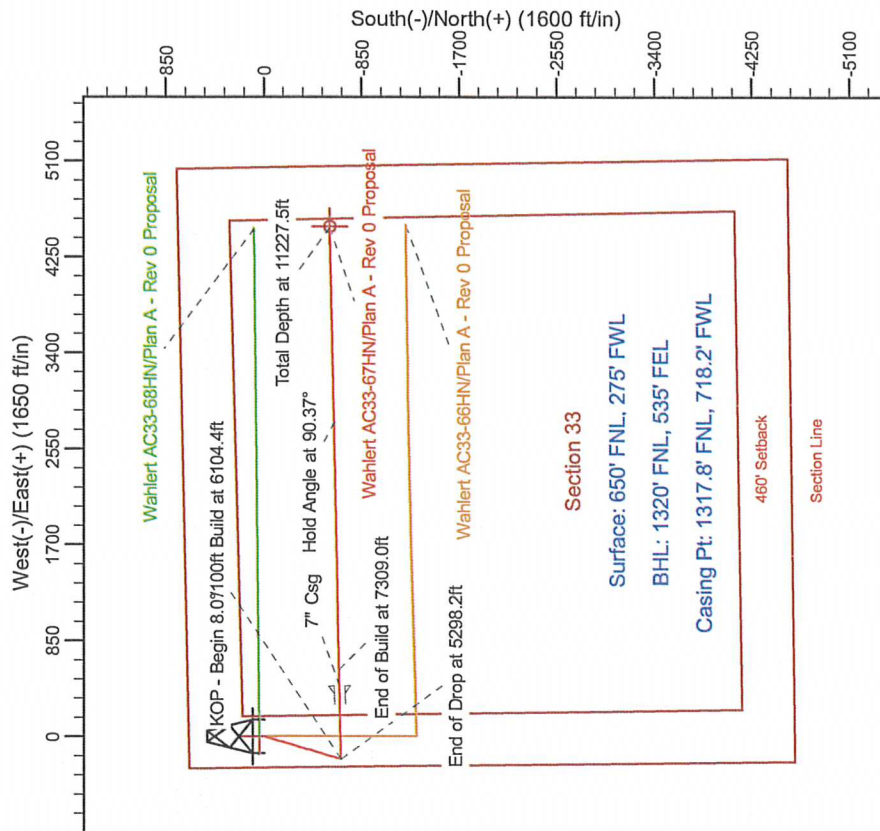
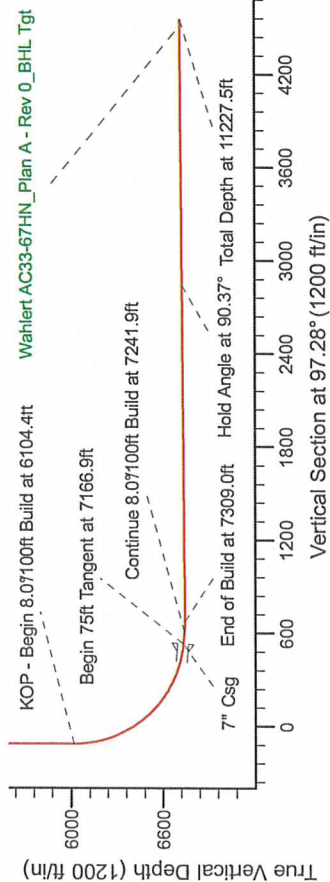
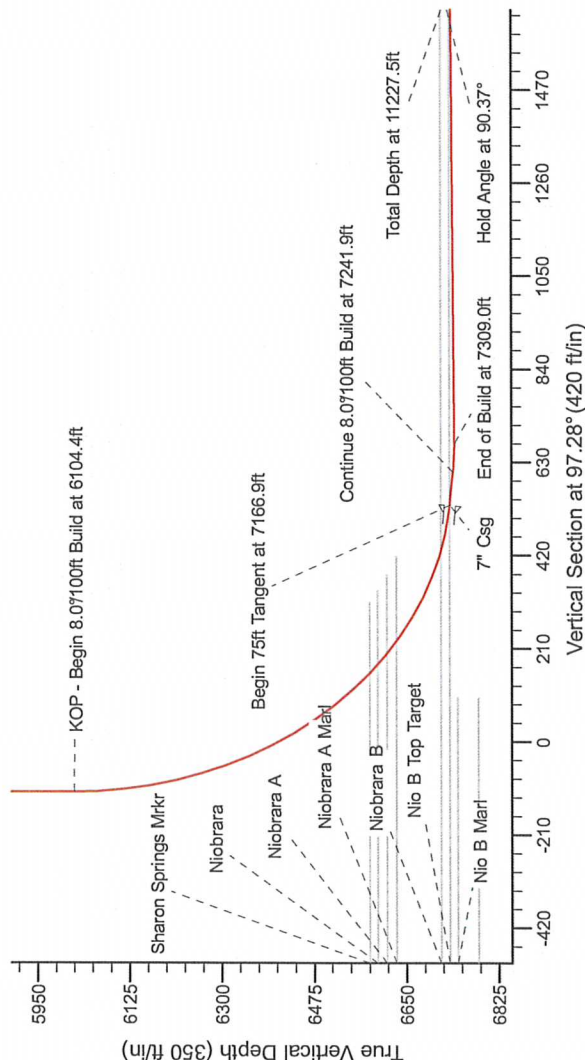


**HALLIBURTON**  
Sperry Drilling

Project: Weld County Colorado (NAD 83)  
Site: Sec.33, T7N, R63N  
Well: Wahlerl AC33-57HIN  
Wellbore: Plan A - Rev 0 (PERMITTING PLAN ONLY)  
Design: Plan A - Rev 0 Proposal

Sec	MD	Inc	Azi	TVD	+N/S	+E/W	Dleg	TFace	VSect	Target
1	2000.0	0.00	0.00	0.00	0.0	0.0	0.00	0.00	0.0	
2	2000.0	0.00	0.00	0.00	0.0	0.0	0.00	0.00	0.0	
3	2600.0	15.00	196.62	2593.2	-74.8	-22.3	2.50	196.62	-12.7	
4	4698.2	15.00	196.62	4619.8	-595.2	-177.7	0.00	0.00	-100.8	
5	5298.2	0.00	0.00	5213.0	-670.0	-200.0	2.50	190.00	-113.5	
6	6104.4	0.00	0.00	6019.2	-670.0	-200.0	0.00	0.00	-113.5	
7	7166.9	85.00	88.86	6733.7	-657.0	452.6	8.00	88.86	533.2	
8	7241.9	85.00	88.86	6735.3	-655.5	528.3	0.00	0.00	607.1	
9	7309.0	90.37	88.86	6742.0	-654.2	595.4	8.00	0.00	673.5	
10	11227.5	90.37	88.87	6745.6	-576.5	453.0	0.00	90.05	549.7	Worked

Wahlert AC33-67HN Plan A - Rev 0 BHL Tqt-



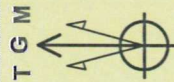
WELL DETAILS: Wahlert AC33-67HN(NAD 83 Geodetic System)

Ground Level:		4782.0
Northing	Easting	Latitude
38826.33	1003335.66	40°32' 8.448 N
		Longitude
		104°27' 0.864 W

Plan: Plan A - Rev 0 Proposal (Wahlerl AC33-67HN/Plan A - Rev 0 (PERMITTING PLAN ONLY))

Created By: Erasmo Mendoza  
Date: 11:35, August 09 2011

ICD Model: IGRF200510  
 Date: 8/9/2011  
 Declination: 7.96°  
 Dip Angle: 67.22°  
 Field Strength: 53241.8



Grid North is 0.65° East of True North (Grid Convergency).  
Magnetic North is 0.64° East of True North (Magnetic Declination).  
Magnetic North is 0.01° East of Grid North (Magnetic Convergence).  
To convert a True Direction to a Grid Direction, Subtract 0.65°.  
To convert a Magnetic Direction to a True Direction, Add 0.64° East.