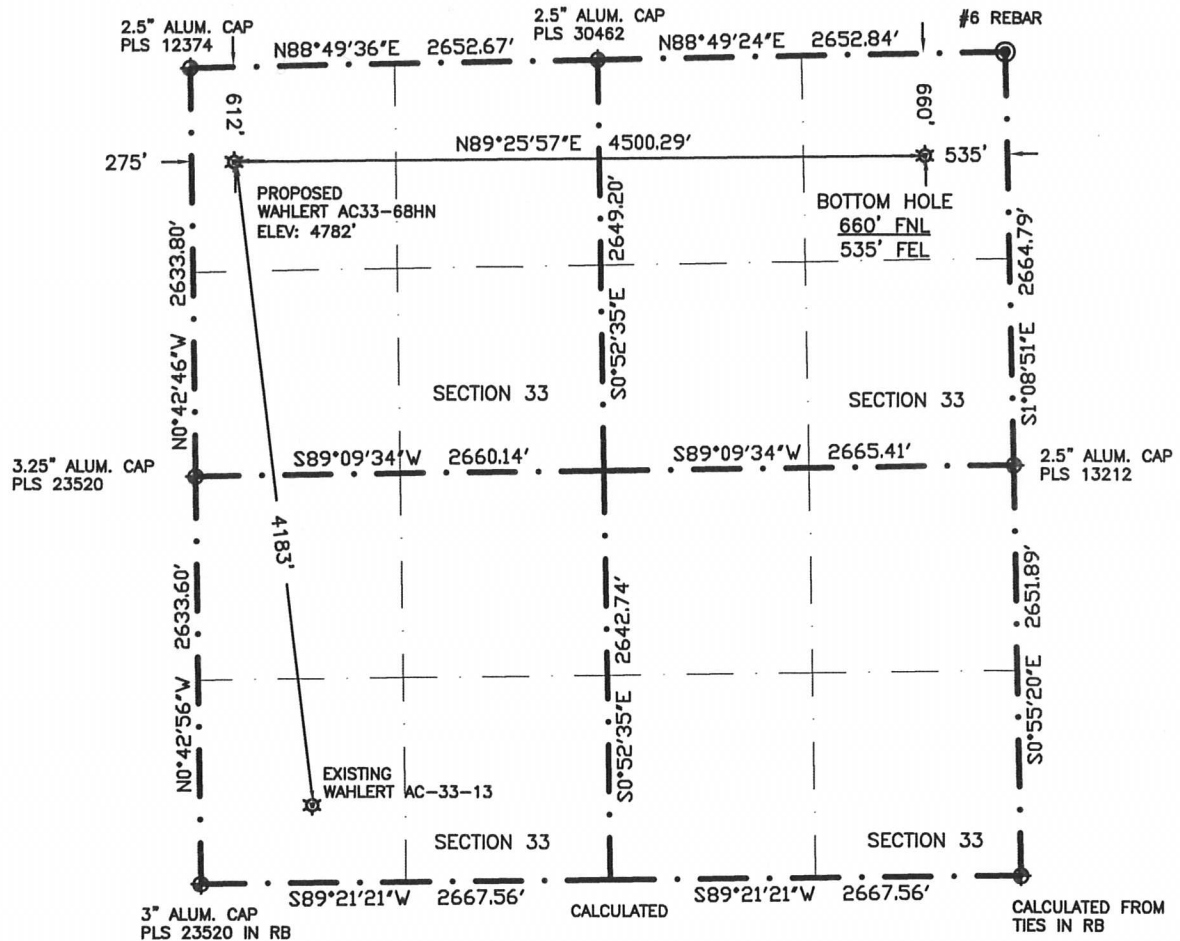


WELL LOCATION CERTIFICATE

THIS MAP DOES NOT REPRESENT A BOUNDARY SURVEY

SECTIONS 33
TOWNSHIP 7N
RANGE 63W



LATITUDE & LONGITUDE (NAD83 SURFACE HOLE)

LATITUDE: N 40.53579

LONGITUDE: W 104.45024

PDOP: 1.2

QUARTER-QUARTER: NW¼NW¼, SECTION 33

NEAREST PROPERTY LINE: 275' WEST

IN ACCORDANCE WITH A REQUEST BY ERIK VAN DECAR-NOBLE ENERGY INC., BOUNDARY BOYS, LLC, HAS DETERMINED THE LOCATION OF THE WAHLERT AC33-68HN WELL TO BE 612' FNL, 275' FWL, AS MEASURED AT NINETY (90) DEGREES FROM THE SECTION LINES, AND THE BOTTOM HOLE TO BE 660' FNL, 535' FEL, SECTIONS 33, TOWNSHIP 7 NORTH, RANGE 63 WEST, 6TH PRINCIPLE MERIDIAN, WELD COUNTY, COLORADO

I HEREBY CERTIFY THAT THIS WELL LOCATION CERTIFICATE WAS PREPARED BY ME, OR UNDER MY DIRECT SUPERVISION, THAT THE FIELD WORK WAS COMPLETED ON JUNE 17, 2011 FOR AND ON BEHALF OF NOBLE ENERGY INC., THAT IT IS NOT A LAND SURVEY PLAT OR AN IMPROVEMENT SURVEY PLAT, AND THAT IT IS NOT TO BE RELIED UPON FOR ESTABLISHMENT OF FENCE, BUILDING, OR OTHER FUTURE IMPROVEMENT LINES.

LATITUDE & LONGITUDE (NAD83 BOTTOM HOLE)

LATITUDE: N 40.53576

LONGITUDE: W 104.43405

QUARTER-QUARTER: NE¼NE¼, SECTION 33

0 1200
SCALE: 1"=1200'

- 1) BASIS OF BEARINGS FOR THIS MAP ARE BASED UPON GPS OBSERVATIONS MADE ON JUNE 17, 2011 BETWEEN MONUMENTS LOCATED AT THE NORTHWEST CORNER AND THE NE CORNER OF SAID SECTION 33 AND WITH ALL OTHER BEARINGS SHOWN HEREON RELATIVE THERETO.
- 2) ELEVATIONS ARE BASED UPON NGS OPUS SOLUTION, NAVD 88 DATUM
- 3) THE NEAREST EXISTING WELL IS WAHLERT AC33-13, 4183' SOUTHEAST
- 4) SEE VISIBLE IMPROVEMENTS EXHIBIT FOR ALL IMPROVEMENTS WITH 400' IMPROVEMENT BUFFER
- 5) THE LOCATION FALLS IN PASTURE LAND

NOTICE: According to Colorado law you MUST commence any legal action based upon any defect in this W.L.C. within three years after you first discover such defect. In no event may any action based upon any defect in this W.L.C. be commenced more than ten years from this said date of the certification shown hereon.

LEGEND



FOUND SURVEY MONUMENT PER MONUMENT RECORD-EXCEPTIONS NOTED



(C) CALCULATED

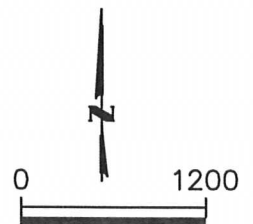
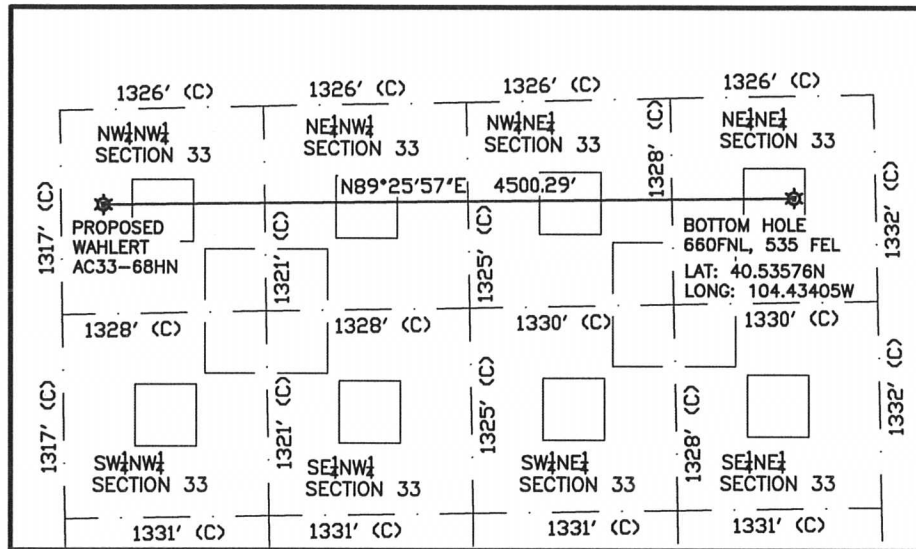


EXISTING WELL HEAD
(UNLESS OTHERWISE NOTED)



Gregory A. Clark
Professional Land Surveyor Registration No. 32430
State of Colorado

Job No. 1NOB0112



SCALE: 1"=1200'

- 1) THIS SKETCH DOES NOT REPRESENT A BOUNDARY SURVEY
2) THE DATUM FOR THE LATITUDES AND LONGITUDES ON THIS SKETCH IS NAD83