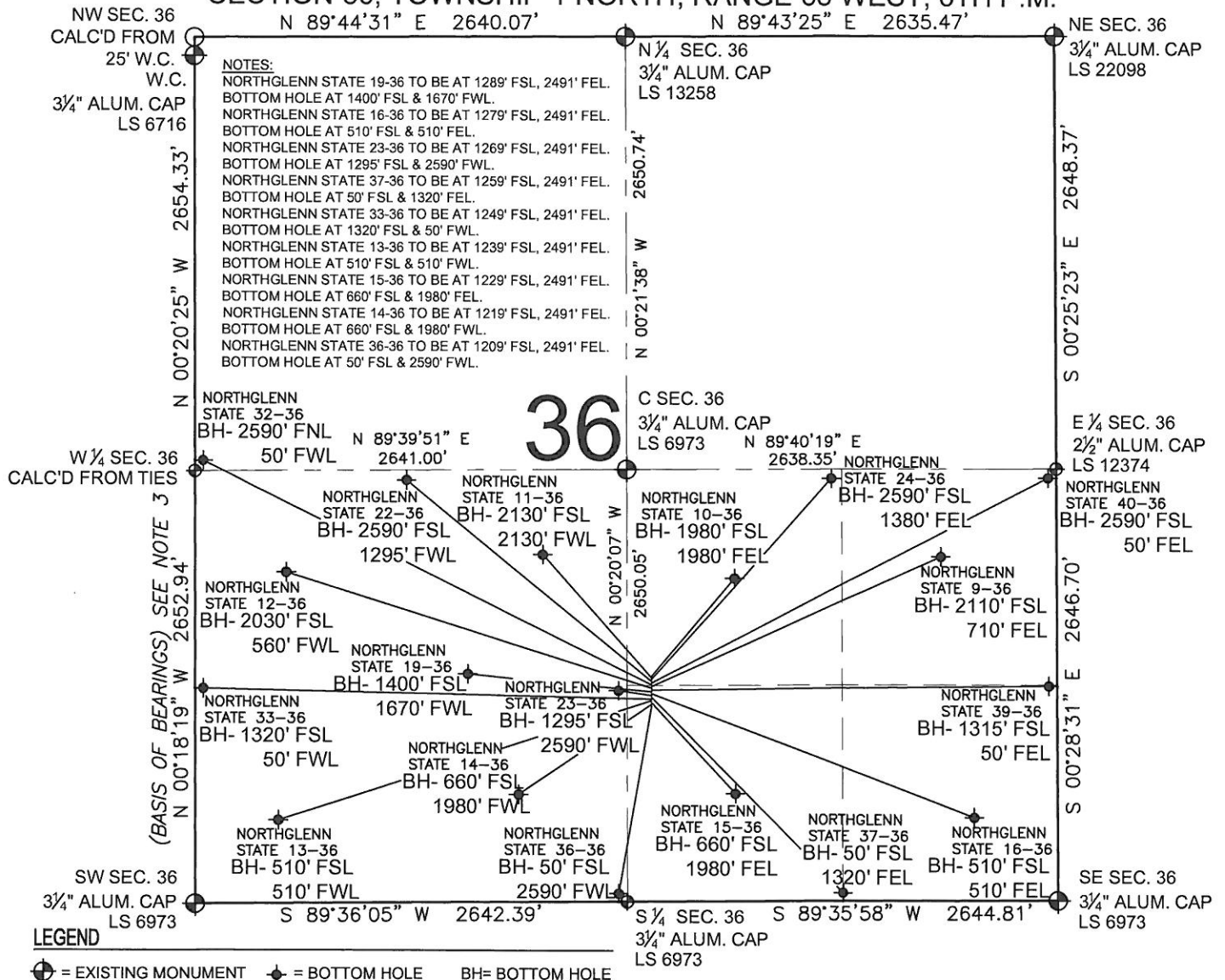


PAD DRAWING: NORTHGLENN STATE 18 PAD

SECTION 36, TOWNSHIP 1 NORTH, RANGE 68 WEST, 6TH P.M.



NOTES:

1. THIS FIELD SURVEY CONFORMS TO THE MINIMUM STANDARDS SET BY THE C.O.G.C.C., RULE NO. 215
2. HORIZONTAL POSITIONS AND ORTHOMETRIC ELEVATIONS SHOWN AT THE WELL HEAD, ARE BASED ON GPS-RTK POSITIONS DERIVED FROM MINIMUM 2-HOUR STATIC OBSERVATIONS CORRECTED BY THE NATIONAL GEODETIC SURVEY ONLINE POSITIONING USER SERVICE, O.P.U.S. DATUM: HORIZONTAL = NAD83/2007, VERTICAL = NAVD88
3. THE BASIS OF BEARINGS ARE STATE PLANE COORDINATE SYSTEM GRID BEARINGS SHOWN HEREON BETWEEN THE DESCRIBED THE MONUMENTS SHOWN HEREON.
4. GRID DISTANCES ARE SHOWN, AS MEASURED IN THE FIELD, WITH TIES TO WELLS MEASURED PERPENDICULAR TO SECTION LINES.

NOTES:

- NORTHGLENN STATE 10-36 TO BE AT 1379' FSL, 2491' FEL.
- BOTTOM HOLE AT 1980' FSL & 1980' FEL.
- NORTHGLENN STATE 11-36 TO BE AT 1369' FSL, 2491' FEL.
- BOTTOM HOLE AT 2130' FSL & 2130' FWL.
- NORTHGLENN STATE 24-36 TO BE AT 1359' FSL, 2491' FEL.
- BOTTOM HOLE AT 2590' FSL & 1380' FEL.
- NORTHGLENN STATE 22-36 TO BE AT 1349' FSL, 2491' FEL.
- BOTTOM HOLE AT 2590' FSL & 1295' FWL.
- NORTHGLENN STATE 40-36 TO BE AT 1339' FSL, 2491' FEL.
- BOTTOM HOLE AT 2590' FSL & 50' FEL.
- NORTHGLENN STATE 32-36 TO BE AT 1329' FSL, 2491' FEL.
- BOTTOM HOLE AT 2590' FNL & 50' FWL.
- NORTHGLENN STATE 9-36 TO BE AT 1319' FSL, 2491' FEL.
- BOTTOM HOLE AT 2110' FSL & 710' FEL.
- NORTHGLENN STATE 12-36 TO BE AT 1309' FSL, 2491' FEL.
- BOTTOM HOLE AT 2030' FSL & 560' FWL.
- NORTHGLENN STATE 39-36 TO BE AT 1299' FSL, 2491' FEL.
- BOTTOM HOLE AT 1315' FSL & 50' FEL.

PREPARED BY:

PFS

Petroleum Field Services, LLC
1801 W. 13th Ave.
Denver, CO 80204

KERR-MCGEE OIL & GAS ONSHORE LP

FIELD DATE: 04-14-11	PAD NAME: NORTHGLENN STATE 18 PAD
DRAWING DATE: 05-03-11	SURFACE LOCATION: WELD COUNTY, COLORADO NW 1/4 SE 1/4, SEC. 36, T1N, R68W SW 1/4 SE 1/4, SEC. 36, T1N, R68W
BY: SMF	

