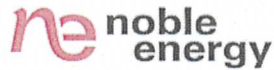


1625 Broadway  
Suite 2000  
Denver, CO 80202

Tel: 303.228.4000  
Fax: 303.228.4280  
www.nobleenergyinc.com



September 12, 2011

Colorado Oil and Gas Conservation Commission  
The Chancery Building  
1120 Lincoln Street, Suite 801  
Denver, CO 80203  
Attn: Mr. David Neslin, Director

RE: GUTTERSEN C33-31D  
Codell/Niobrara New Drill  
Township 4 North, Range 64 West, 6th P.M.  
Section 33: NW/4SW/4: 2483' FSL & 238' FWL (Surface Location)  
Section 32: SE/4NE/4: 1320' FNL & 75' FEL (Bottom Hole Location)  
Weld County, Colorado

Mr. Neslin:

Noble Energy, Inc. ("NEI") is planning to drill the captioned boundary well in accordance with the provisions of COGCC Rule 318A.e.

NEI's proposed wellbore spacing unit consists of the SENE SECTION 32, T4N, R64W, creating a 160-acre wellbore spacing unit. NEI is the only owner within the proposed wellbore spacing unit, therefore NEI hereby attests that no notice letters are required under COGCC Rule 318A(l).e.(6).

Enclosed are copies of the following documents to assist you in your review and approval of NEI's proposed APD for the captioned well:

- Map & plat illustrating proposed wellbore spacing unit.

Thank you for your attention to the enclosed. NEI respectfully requests that the COGCC review the enclosed information and approve the Application for Permit to Drill the captioned well.

Sincerely,

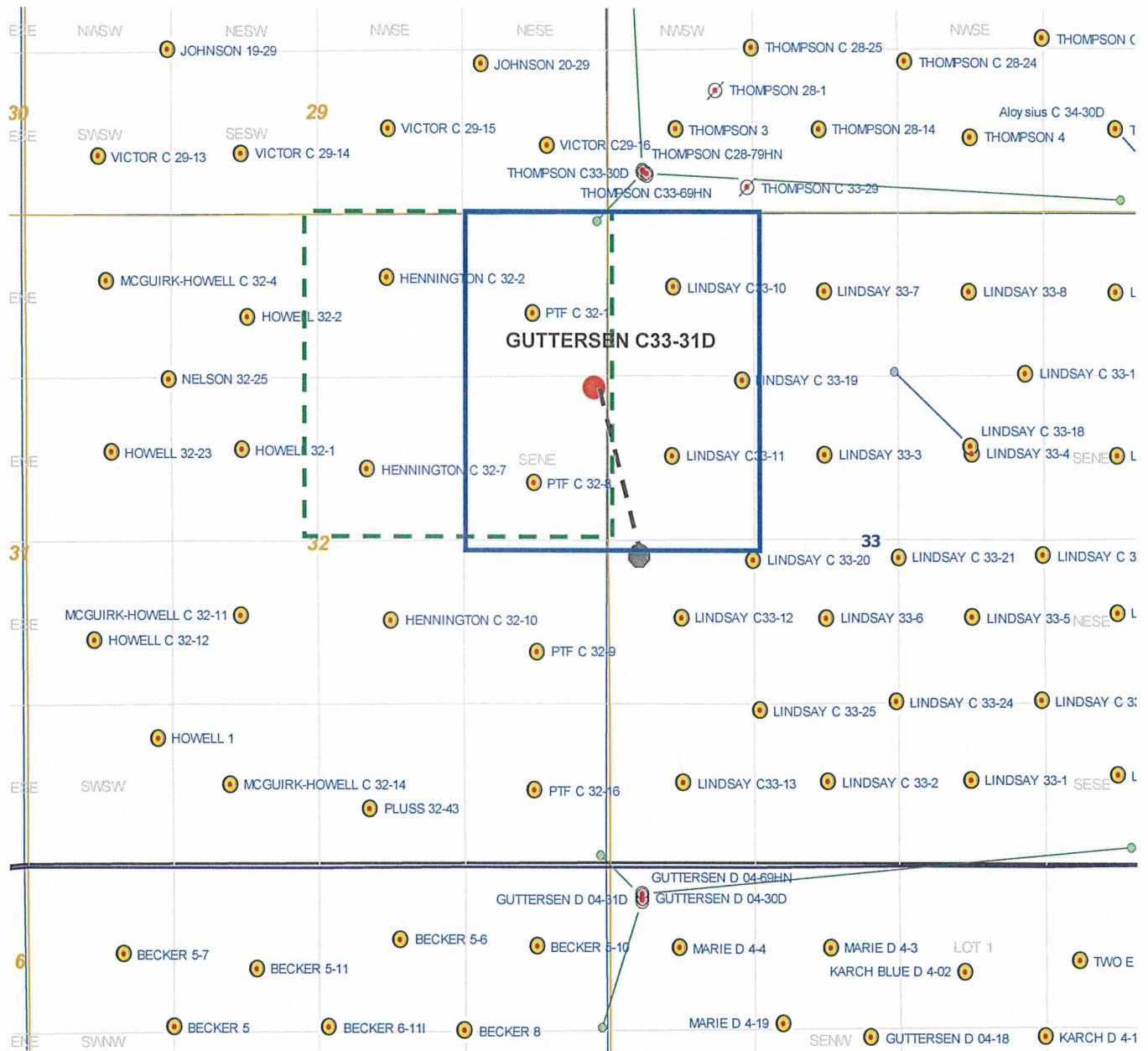
A handwritten signature in blue ink, appearing to read 'Jan Kajiwar'.

Jan Kajiwar  
Regulatory Analyst II  
Noble Energy Inc.

# GUTTERSEN C33-31D

## Noble Energy, Inc

### SENE Section 32, Township 4 North, Range 64 West



#### Legend

- Proposed 160 acre spacing unit
- Bottom Hole Location
- Bottom Hole Located NE/4, Sec32, T4N, R64W

The governmental ¼ Section has less than 8 bottom hole wells producing from the  
Codell, Niobrara, and J-Sand formations.

Stell Surveying Services, LLC

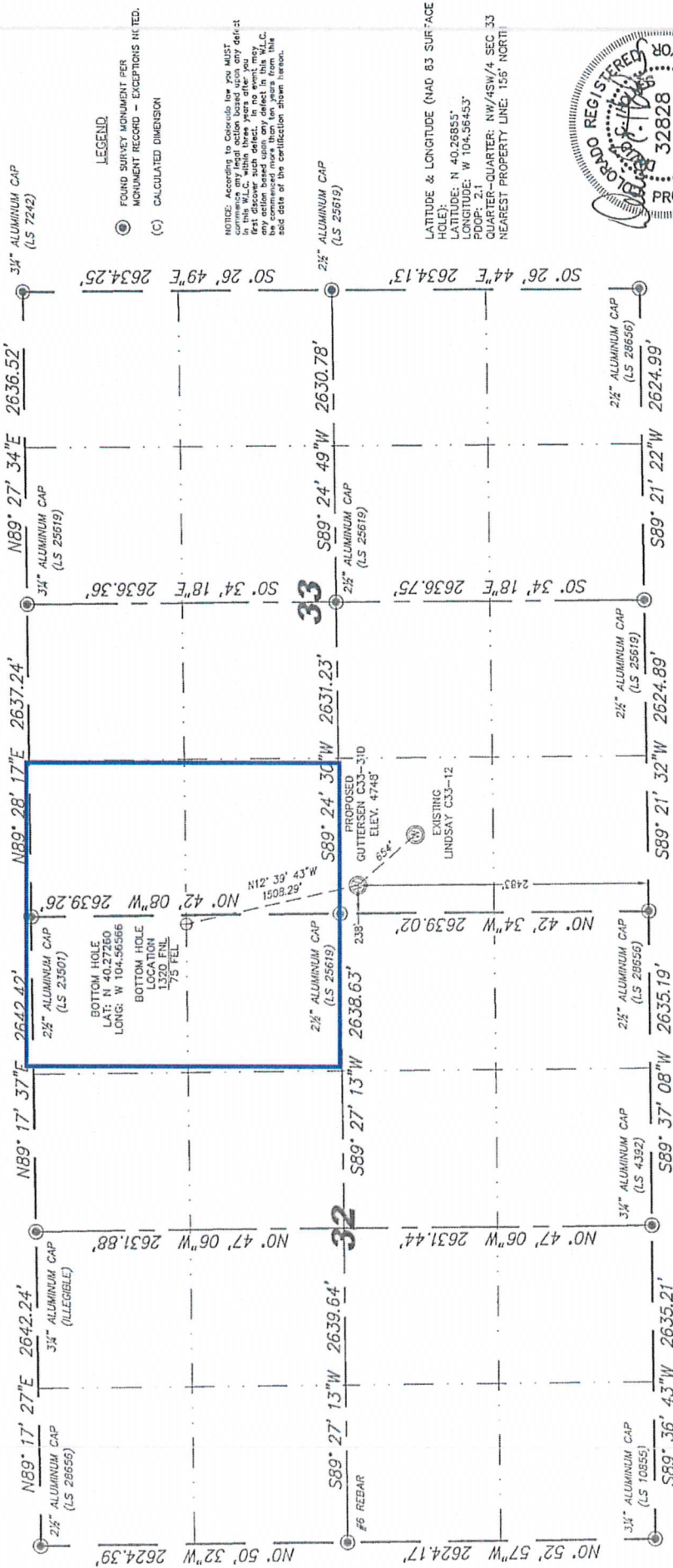
1102 West 19th Street P.O. BOX 2073

Cheyenne, Wyoming 82001

# WELL LOCATION CERTIFICATE

THIS MAP DOES NOT REPRESENT A BOUNDARY SURVEY

SECTION 32 & 33  
TOWNSHIP 4 NORTH  
RANGE 64 WEST



IN ACCORDANCE WITH A REQUEST FROM BRIAN DORRICE - NOBLE ENERGY INC.  
STELL SURVEYING SERVICES, LLC HAS DETERMINED THE LOCATION OF THE GUTTERSEN C33-310  
WELL TO BE 2463' FSL, 235' FW, AS MEASURED AT NINETY (90) DEGREES FROM THE SECTION  
LINES, SECTION 33, TOWNSHIP 4 NORTH, RANGE 64 WEST, 6TH PRINCIPLE MERIDIAN, WELD  
COUNTY, COLORADO.

I HEREBY CERTIFY THAT THIS WELL LOCATION CERTIFICATE WAS PREPARED BY ME, OR UNDER  
MY DIRECT SUPERVISION, THAT THE FIELD WORK WAS COMPLETED ON 06/22/2011, FOR AND ON  
BEHALF OF STELL SURVEYING SERVICES, LLC, AND THAT I AM A LICENSED PROFESSIONAL LAND  
SURVEYOR IN THE STATE OF COLORADO. I HAVE NOT BEEN RECALLED FOR THIS SURVEY, AND  
I HAVE NOT BEEN RECALLED FOR ESTABLISHMENT OF FENCE, BUILDING, OR OTHER FUTURE IMPROVEMENT LINES.

- NOTES:
- 1) BASIS OF BEARINGS FOR THIS MAP ARE BASED UPON GPS OBSERVATIONS MADE ON 11/18/2010 BETWEEN MONUMENTS LOCATED AT THE SOUTHEAST SECTION CORNER AND THE NORTHEAST SECTION CORNER OF SAID SECTION AND WITH ALL BEARINGS SHOWN HEREON RELATIVE THERETO.
  - 2) MONUMENTS SHOWN ON THIS MAP ARE BASED UPON THE 1983 DATUM.
  - 3) ELEVATIONS ARE BASED UPON NGS GPS SOLUTION WAD 83 DATUM.
  - 4) THE NEAREST EXISTING WELL IS: LINDSAY C33-12, 634' SOUTHEAST.
  - 5) SEE LOCATIONS LIMIT.
  - 6) IMPROVEMENTS LIMIT.
  - 7) THE LOCATION FALLS IN PASTURE LAND.



0 1000  
Scale: 1" = 1000'

Completed 06/22/2011  
David C. Holmes  
Professional Land  
Surveyor Registration No. 32828  
State of Colorado  
JOB #: 11056



LATITUDE & LONGITUDE (NAD 83 SURFACE HOLE):  
LATITUDE: N 40.26853°  
LONGITUDE: W 104.56453°  
POOP: 21  
QUARTER-QUARTER: NW/4SW/4 SEC 33  
NEAREST PROPERTY LINE: 136' NORTH

- LEGEND
- FOUND SURVEY MONUMENT PER MONUMENT RECORD - EXCEPTIONS NOTED.
  - (C) CALCULATED DIMENSION

NOTICE: According to Colorado law you MUST examine this map carefully and if you discover such defect, in no event may you be held liable for any damages that be commenced more than ten years from the sold date of the certification shown hereon.