

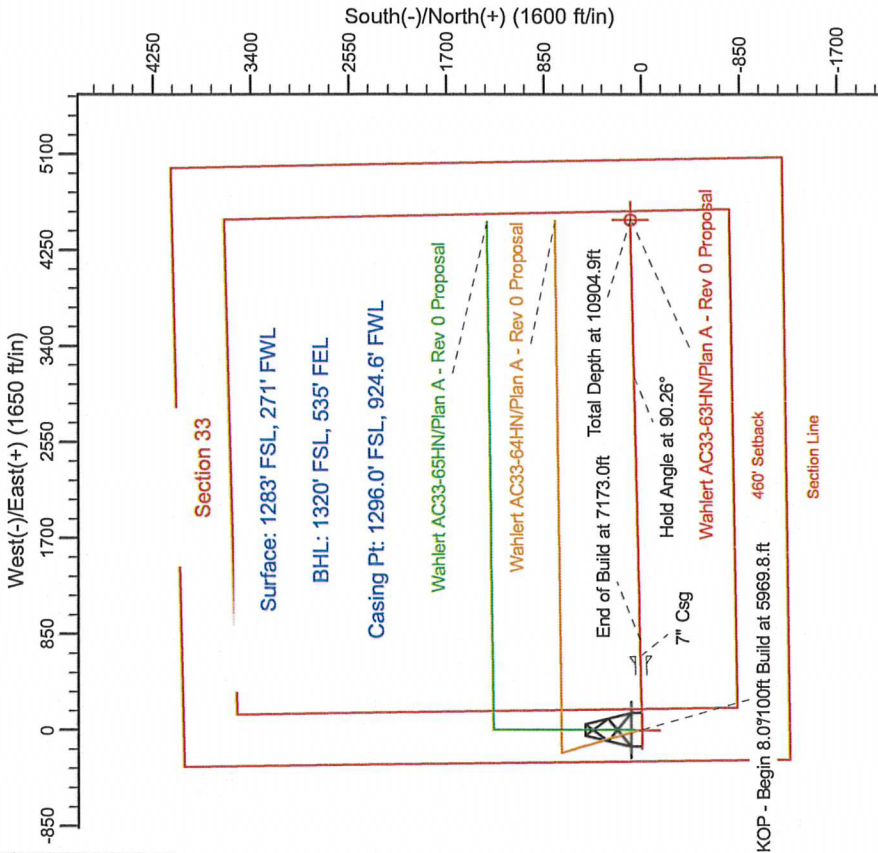
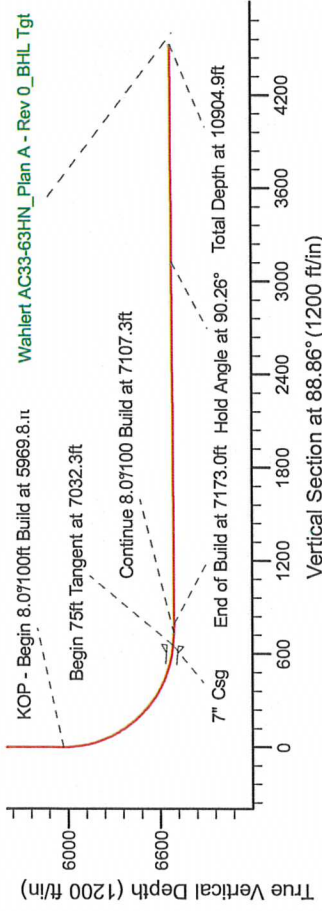
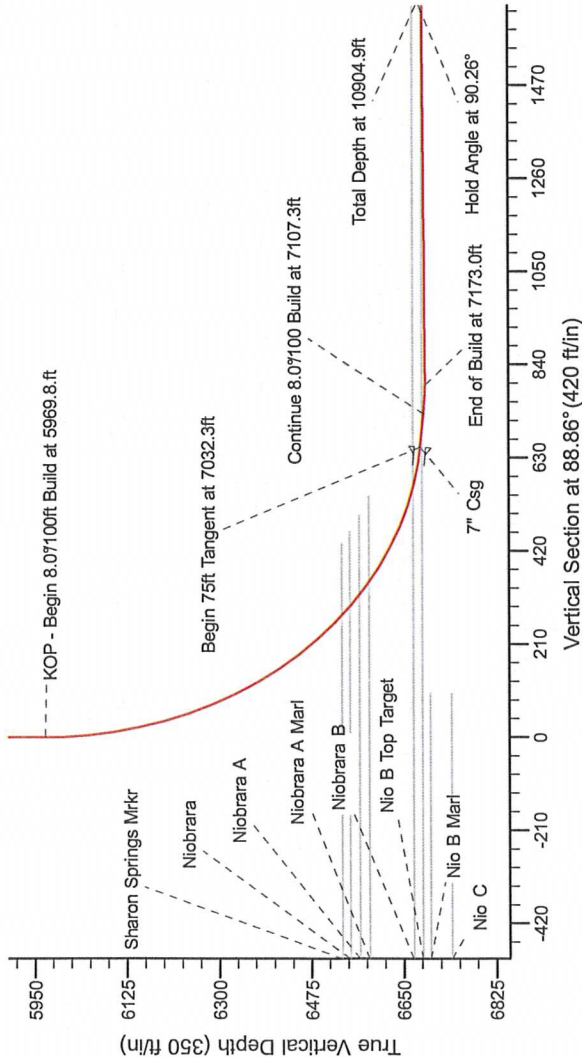
Noble Energy

HALLIBURTON  
Sperry Drilling

Project: Weld County Colorado (NAD 83)  
Site: Sec.33, T7N, R63W  
Well: Wahliert AC33-63HN  
Wellbore: Plan A - Rev 0 (PERMITTING PLAN ONLY)  
Design: Plan A - Rev 0 Proposal

SECTION DETAILS

Sec	MD	Inc	Azi	TVD	+N/-S	+E/-W	Dleg	TFace	Vsect	Target
1	0.0	0.00	0.00	0.0	0.0	0.0	0.00	0.00	0.0	0.0
2	5969.8	0.00	0.00	5969.8	0.0	0.0	0.00	0.00	0.0	0.0
3	7032.3	85.00	88.86	6883.3	13.0	653.6	8.00	88.86	653.8	653.8
4	7107.3	85.00	88.86	6889.8	14.5	728.3	0.00	0.00	728.5	728.5
5	7173.0	90.26	88.86	6892.5	15.8	794.0	8.00	0.00	794.2	794.2
6	10904.9	90.26	88.85	6675.5	90.4	4525.1	0.00	-70.99	4526.0	Wahliert AC33-63HN_Plan A - Rev 0_BHL Tgt-



WELL DETAILS: Wahliert AC33-63HN(NAD83 Geodetic System)

North	East	Ground Level	Longitude
437809.25	1003346.85	4742.0	104°27' 0.900 W

Plan: Plan A - Rev 0 Proposal (Wahliert AC33-63HN/Plan A - Rev 0 (PERMITTING PLAN ONLY))

Created By: Erasmo Mendoza Date: 15:01, August 09 2011

**T G M**

Magnetic North: 68°20'00" E  
Destination: 7.86°  
Dip Angle: 67.21°  
Field Strength: 53297.3

Old North is 68°20' East of True North (Old Curve given)  
Magnetic North is 7.86° East of Old North (Magnetic to Geomagnetic)  
To convert a True North Direction to a Magnetic Direction, Add 6.84° East  
To convert a Magnetic Direction to a True Direction, Add 7.86°