

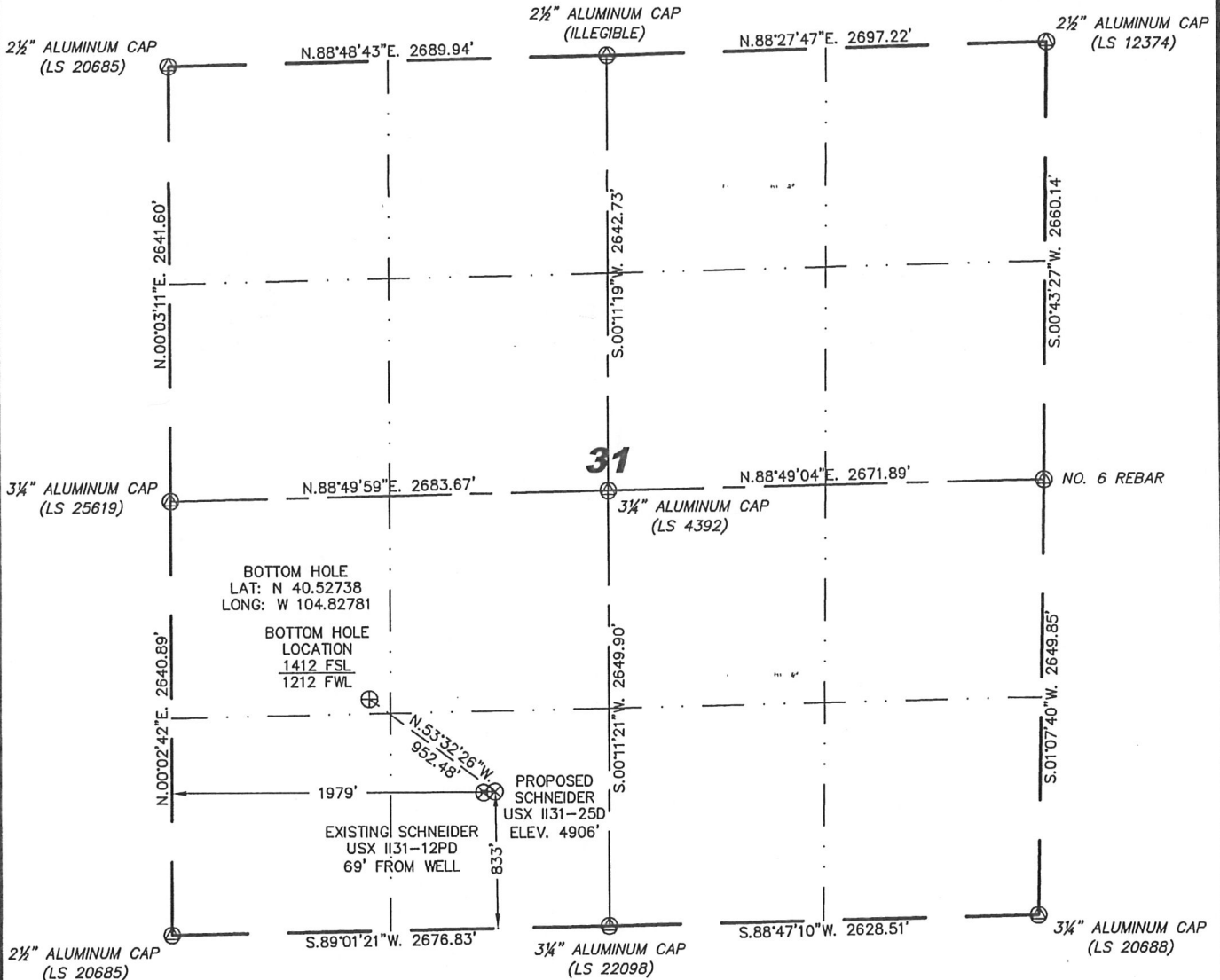
Steil Surveying Services, LLC

1102 West 19th Street P.O. BOX 2073

Cheyenne, Wyoming 82001

WELL LOCATION CERTIFICATE
THIS MAP DOES NOT REPRESENT A BOUNDARY SURVEY

SECTION 31
TOWNSHIP 7 NORTH
RANGE 66 WEST



BOTTOM HOLE
LAT: N 40.52738
LONG: W 104.82781

BOTTOM HOLE
LOCATION
1412 FSL
1212 FWL

PROPOSED
SCHNEIDER
USX 1131-25D
ELEV. 4906'

EXISTING SCHNEIDER
USX 1131-12PD
69' FROM WELL

IN ACCORDANCE WITH A REQUEST FROM SCOTT LEWIS - NOBLE ENERGY INC, STEIL SURVEYING SERVICES, LLC HAS DETERMINED THE LOCATION OF THE SCHNEIDER USX 1131-25D WELL TO BE 833' FSL, 1979' FWL, AS MEASURED AT NINETY (90) DEGREES FROM THE SECTION LINES, SECTION 31, TOWNSHIP 7 NORTH, RANGE 66 WEST, 6TH PRINCIPLE MERIDIAN, WELD COUNTY, COLORADO.

I HEREBY CERTIFY THAT THIS WELL LOCATION CERTIFICATE WAS PREPARED BY ME, OR UNDER MY DIRECT SUPERVISION, THAT THE FIELD WORK WAS COMPLETED ON 07/15/2011, FOR AND ON BEHALF OF NOBLE ENERGY INC, THAT IT IS NOT A LAND SURVEY PLAT OR AN IMPROVEMENT SURVEY PLAT, AND THAT IT IS NOT TO BE RELIED UPON FOR ESTABLISHMENT OF FENCE, BUILDING, OR OTHER FUTURE IMPROVEMENT LINES.



0 1000

Scale: 1" = 1000'

NOTES:

- 1) BASIS OF BEARINGS FOR THIS MAP ARE BASED UPON GPS OBSERVATIONS MADE ON 03/25/2009 BETWEEN MONUMENTS LOCATED AT THE SOUTHEAST SECTION CORNER AND THE NORTHEAST SECTION CORNER OF SAID SECTION AND WITH ALL BEARINGS SHOWN HEREON RELATIVE THERETO.
- 2) COORDINATES SHOWN ARE COLORADO STATE PLANE (NORTH ZONE) NAD 83.
- 3) ELEVATIONS ARE BASED UPON NGS OPUS SOLUTION NAVD 88 DATUM.
- 4) THE NEAREST EXISTING WELL IS: SCHNEIDER USX 1131-12PD, 69' WEST.
- 5) SEE LOCATION DRAWING FOR ALL IMPROVEMENTS WITHIN VISIBLE IMPROVEMENTS LIMIT.
- 6) THE LOCATION FALLS IN IRRIGATED CROP LAND.

LATITUDE & LONGITUDE (NAD 83 SURFACE HOLE):

LATITUDE: N 40.52582'
LONGITUDE: W 104.82507'
PDOP: 1.6
QUARTER-QUARTER: SE/4SW/4
NEAREST PROPERTY LINE: 700' TO THE EAST

LEGEND

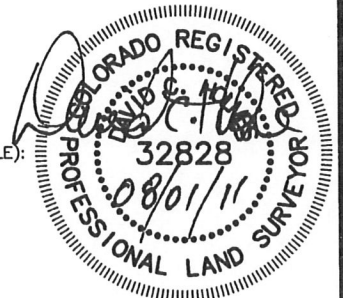
- (A) FOUND SURVEY MONUMENT PER MONUMENT RECORD - EXCEPTIONS NOTED.
- (C) CALCULATED DIMENSION

NOTICE: According to Colorado law you MUST commence any legal action based upon any defect in this W.L.C. within three years after you first discover such defect. In no event may any action based upon any defect in this W.L.C. be commenced more than ten years from this said date of the certification shown hereon.

David C. Holmes
Professional Land Surveyor Registration No. 32828
State of Colorado

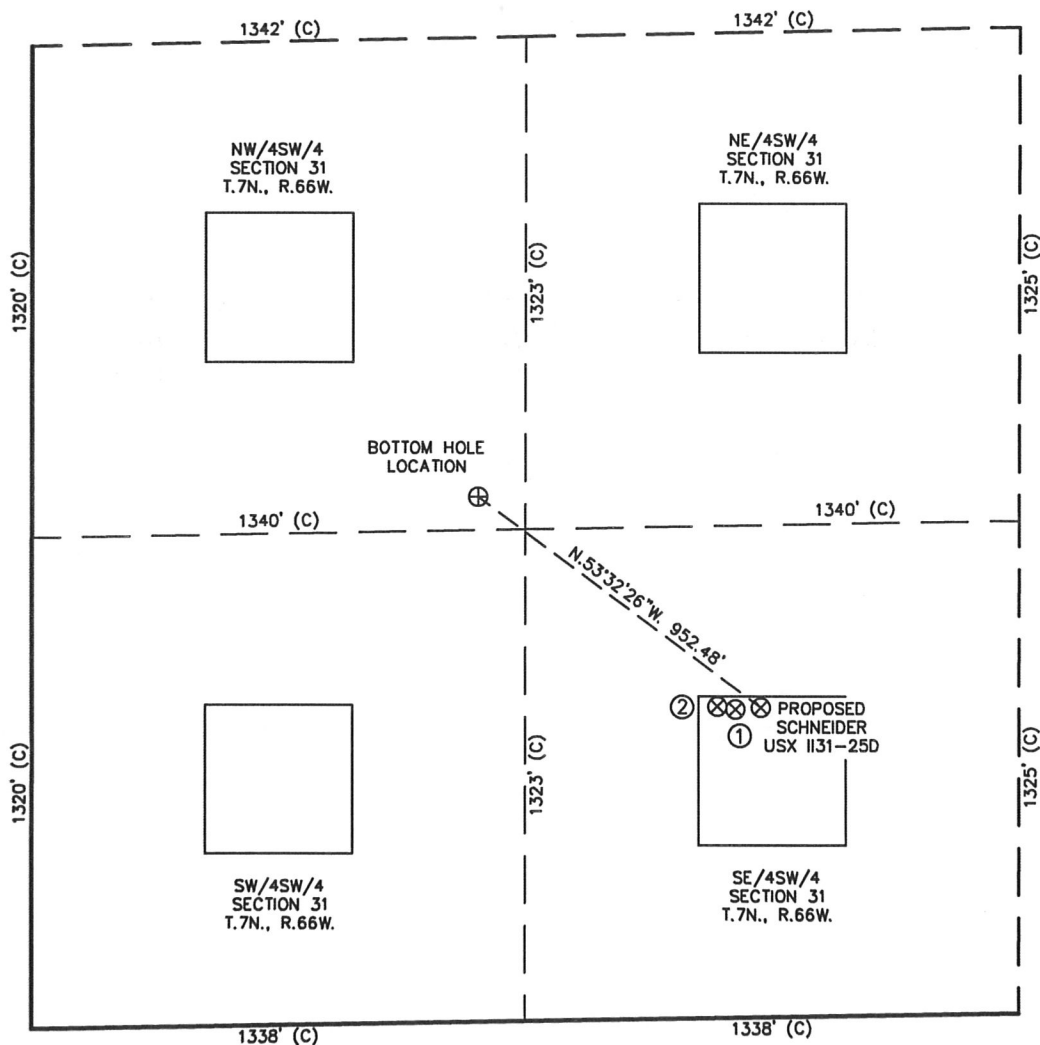
JOB #: 11086

Completed 08/01/2011



SKETCH - SCHNEIDER USX II31-25D

SECTION 31
TOWNSHIP 7 NORTH
RANGE 66 WEST



①

SCHNEIDER
USX II31-12PD
SE/SW SEC. 31
829' FSL
1909' FWL
EL 4905'
N 40.52580
W 104.82532
PDOP 1.9

②

SCHNEIDER
USX II31-14
SE/SW SEC. 31
838' FSL
1860' FWL
EL 4908'
N 40.52583
W 104.82550
PDOP 2.0

NOTES:

- 1) THIS SKETCH DOES NOT REPRESENT A BOUNDARY SURVEY.
- 2) THE DATUM FOR THE LATITUDES AND LONGITUDES ON THIS SKETCH IS NAD83.

