



**WRD Federal 4-23
WHITE RIVER DOME
Rio Blanco County , Colorado**



26-Jul-2007

Job Site Documents

Work Order Contract

Order Number

5254018

Halliburton Energy Services, Inc.
Houston, Texas 77056

TO: HALLIBURTON ENERGY SERVICES, INC. - YOU ARE HEREBY REQUESTED TO FURNISH EQUIPMENT AND SERVICE PERSONNEL TO DELIVER AND OPERATE THE SAME AS AN INDEPENDENT CONTRACTOR TO CUSTOMER LISTED BELOW AND DELIVER AND SELL PRODUCTS, SUPPLIES AND MATERIALS FOR THE PURPOSE OF SERVICING:

Well No. 4-23	Farm or Lease WRD Federal	County Rio Blanco	State Colorado	Well Permit Number
Customer CHESAPEAKE OPERATING INC EBUSINESS		Well Owner		Job Purpose Cement Production Casing

THIS WORK ORDER MUST BE SIGNED BEFORE WORK IS COMMENCED

A. CUSTOMER REPRESENTATION -
(hereinafter "Halliburton").

lied by Halliburton Energy Services, Inc.

B. PRICE AND PAYMENT -
Customer does

ent price list. All prices are exclusive of taxes. If r delivery of equipment, products or materials. If Customer has an approved open account, invoices are payable on the twentieth day after the date of invoice. Customer agrees to pay interest on any unpaid balance from the date payable until paid at the highest lawful contract rate applicable, but never to exceed 18% per annum. In the event Halliburton employs an attorney for collection of any account. Customer agrees to pay attorney fees of 20% of the unpaid account, or nt of attorney fees set out herein are reasonable and necessary.

C. RELEASE AND INDEMNITY - Customer agrees to RELEASE Halliburton Group from any and all liability for any and all damages whatsoever to property of any kind owned by, in the possession of, or leased by Customer and those persons and entities Customer has the ability to bind by contract or which are co-interest owners or joint ventures with Customer. Customer also agrees to DEFEND, INDEMNIFY, AND HOLD Halliburton Group HARMLESS from and against any and all liability, claims, costs, expenses, attorney fees and damages whatsoever for personal injury, illness, death, property damage and loss resulting from:

to or
tivity; and pollution and contamination and its cleanup and control.

CUSTOMER'S RELEASE, DEFENSE, INDEMNITY AND HOLD HARMLESS

It, or strict liability of one or more or equipment furnished by any member or members of the Halliburton Group whether in the design, liburton Energy Services, Inc., its parent, subsidiary, and affiliated companies, insurers and subcontractors and all its/their officers, directors, employees, consultants and agents. Customer's RELEASE, DEFENSE, INDEMNITY AND HOLD HARMLESS obligations apply whether the personal injury, illness, death, property damage or loss is suffered by one or more members of the Halliburton Group agrees to name Halliburton Group as named additional insured on all of its gener ce with limits of not less than \$500,000. Customer may be required by applicable local law for the provisions of this Contract to be enforceable. coverage, except where and as

D. EQUIPMENT LIABILITY -

equipment is recovered and repairable, Customer shall pay the repair costs, unless caused by Halliburton negligence. If a radioactive source becomes lost or lodged in the well, Customer shall meet all requirements of Section 39.15(a) of the Nuclear Regulatory Commission regulations and any other applicable laws ed by Halliburton's sole s all at no risk or liability to Halliburton Group. Customer shall be responsible for damage to or loss of Halliburton group equipment, products, and materials while in transit aboard Customer-supplied transportation, even if such is arranged by Halliburton at Customer's request, and during t damaged by corrosion or abrasion due to well effluents.

E. LIMITED WARRANTY - Halliburton warrants only title to the equipment, products, and materials supplied under this Contract and that same are free from defects in workmanship and materials for thirty (30) days from the date of delivery. THERE ARE NO WARRANTIES, EXPRESS OR IMPLIED, OF MERCHANTABILITY, FITNESS OR OTHERWISE BEYOND THOSE STATED IN THE IMMEDIATELY PRECEDING SENTENCE. Halliburton's sole liability and Customer's exclusive remedy in any cause of action (whether in contract, tort, breach of warranty or otherwise) arising out of the sale, lease or use liburton's option, to the allowance to Customer of credit for the cost of such items. In no event shall Halliburton be liable for the necessity of relying on facts and supporting services furnished by others. **HALLIBURTON IS UNABLE TO GUARANTEE THE EFFECTIVENESS OF THE EQUIPMENT, MATERIALS, OR SERVICE, NOR THE ACCURACY OF ANY CHART INTERPRETATION, RESEARCH ANALYSIS, JOB RECOMMENDATION OR OTHER DATA FURNISHED BY HALLIBURTON GROUP.** Halliburton personnel will use their best efforts in gathering such information and their best judgment in interpreting it, but Customer agrees that Halliburton Group shall not be liable for and **CUSTOMER SHALL INDEMNIFY HALLIBURTON GROUP AGAINST ANY DAMAGES ARISING FROM THE USE OF SUCH INFORMATION, even if such is contributed to or caused by the active or passive negligence, fault or strict y electronic process, and Halliburton will**

not be responsible for accidental or intentional interception of such data by third parties.

F. GOVERNING LAW -
delivered.

services are performed or the equipment or materials are

G. DISPUTE RESOLUTION Customer and Halliburton agree that any dispute that may arise out of the performance of this Contract shall be resolved by binding arbitration by a panel of three arbitrators under the rules or the American Arbitration Association. The arbitration will take place in Houston, TX.

H. SEVERABILITY - If any provision or part thereof of this Contract shall be held to be invalid, void, or of no effect for any reason, such holding shall not be deemed to affect the validity of the remaining ovisions of this Contract are declared to be severable. Customer and Halliburton agree es hereunder to the greatest extent allowed by applicable law.

I. MODIFICATIONS - Customer agrees that Halliburton shall not

ive officer of

Halliburton. Requests for modifications should be directed to the Vice President - Legal, 10200 Bellaire Blvd., Houston, TX. 77072-5299.

I HAVE READ AND UNDERSTAND THIS WORK ORDER CONTRACT WHICH CONTAINS RELEASE AND INDEMNITY LANGUAGE WHICH CUSTOMER ACKNOWLEDGES

IS CONSPICUOUS AND AFFORDS FAIR AND ADEQUATE NOTICE AND I REPRESENT THAT I AM AUTHORIZED TO SIGN THE SAME AS CUSTOMER'S AGENT. !

CONFLICT WITH TERMS AND CONDITIONS OF A SIGNED MASTER SERVICE CONTRACT BETWEEN THE PARTIES.

SIGNED:

CUSTOMER Authorized Signatory

DATE:

TIME:

A.M./PM.

The Road to Excellence Starts with Safety

Sold To #: 344659	Ship To #: 2586169	Quote #:	Sales Order #: 5254018
Customer: CHESAPEAKE OPERATING INC EBUSINESS	Customer Rep: COOK, MIKE		
Well Name: WRD Federal	Well #: 4-23	API/UWI #:	
Field: WHITE RIVER DOME	City (SAP): UNKNOWN	County/Parish: Rio Blanco	State: Colorado
Legal Description: Section 23 Township 2N Range 97W			
Contractor: DHS	Rig/Platform Name/Num: DHS3		
Job Purpose: Cement Production Casing			
Well Type: Development Well	Job Type: Cement Production Casing		
Sales Person: JAMES, AARON	Srv Supervisor: MUSIC, SHANE	MBU ID Emp #:	362772

Job Personnel

HES Emp Name	Exp Hrs	Emp #	HES Emp Name	Exp Hrs	Emp #	HES Emp Name	Exp Hrs	Emp #
FRAZIER, RON D	12	420728	GUTHRIE, BYRON Linn	12	420274	LOPEZ, RYAN La Mar	12	347583
MUSIC, SHANE	12	362772	ROBBINS, RICHARD Dean	12	398049	ROSEN LUND, DEWAYNE Max	12	380841

Equipment

HES Unit #	Distance-1 way	HES Unit #	Distance-1 way	HES Unit #	Distance-1 way	HES Unit #	Distance-1 way
10421116	80 mile	10616259	80 mile	10713216	80 mile	10724587	80 mile
10741129	80 mile	10784082	80 mile	10804581	80 mile	422597	80 mile
77431C	80 mile						

Job Hours

Date	On Location Hours	Operating Hours	Date	On Location Hours	Operating Hours	Date	On Location Hours	Operating Hours
7/26/07	12	5						

TOTAL	Total is the sum of each column separately							
-------	--	--	--	--	--	--	--	--

Job

Formation Name	Top	Bottom	Called Out	Date	Time	Time Zone
Formation Depth (MD)			On Location	26 - Jul - 2007	02:00	MST
Form Type		BHST	Job Started	26 - Jul - 2007	07:00	MST
Job depth MD	7352.4 ft	Job Depth TVD	Job Completed	26 - Jul - 2007	13:00	MST
Water Depth		Wk Ht Above Floor		26 - Jul - 2007	19:00	MST
Perforation Depth (MD)	From	To	Departed Loc			

Well Data

Description	New / Used	Max pressure psig	Size in	ID In	Weight lbm/ft	Thread	Grade	Top MD ft	Bottom MD ft	Top TVD ft	Bottom TVD ft
8 5/8" Surface Casing	Used		8.625	8.097	24.			.	1157.		
7 7/8" Production Open Hole				7.875				1157.	7350.		
5 1/2" Production Casing	New		5.5	4.892	17.			.	7350.		

Sales/Rental/3rd Party (HES)

Description	Qty	Qty uom	Depth	Supplier
PLUG,CMTG,TOP,5 1/2,HWE,4.38 MIN/5.09 MA	1	EA		

Tools and Accessories

Type	Size	Qty	Make	Depth	Type	Size	Qty	Make	Depth	Type	Size	Qty	Make
Guide Shoe					Packer					Top Plug			
Float Shoe					Bridge Plug					Bottom Plug			
Float Collar					Retainer					SSR plug set			
Insert Float										Plug Container			
Stage Tool										Centralizers			

Miscellaneous Materials													
Gelling Agt		Conc		Surfactant		Conc		Acid Type		Qty		Conc	%
Treatment Fld		Conc		Inhibitor		Conc		Sand Type		Size		Qty	
Fluid Data													
Stage/Plug #: 1													
Fluid #	Stage Type	Fluid Name			Qty	Qty uom	Mixing Density lbm/gal	Yield ft3/sk	Mix Fluid Gal/sk	Rate bbl/min	Total Mix Fluid Gal/sk		
1	SUPER FLUSH 101	SUPER FLUSH 101 - SBM (12199)			20.0	bbl	10.	.0	.0	.0			
2	Water Spacer				10.0	bbl	8.34	.0	.0	.0			
3	50/50 Poz Marker	POZ PREMIUM 50/50 - SBM (12302)			50.0	sacks	13.4	1.53	7.44		7.44		
3 %		SALT, 100 LB BAG (100003652)											
0.75 %		HALAD(R)-322, 50 LB (100003646)											
0.2 %		WG-17, 50 LB SK (100003623)											
3 %		SILICALITE - COMPACTED, 50 LB SK (100012223)											
0.125 lbm		POLY-E-FLAKE (101216940)											
7.053 Gal		FRESH WATER											
4	Halliburton Hifill Lead	HALLIBURTON HI-FILL - SBM (21832)			500.0	sacks	11.	3.84	23.15		23.15		
23.147 Gal		FRESH WATER											
5	50/50 Poz Premium Tail	POZ PREMIUM 50/50 - SBM (12302)			350.0	sacks	13.4	1.53	7.44		7.44		
3 %		SALT, 100 LB BAG (100003652)											
0.75 %		HALAD(R)-322, 50 LB (100003646)											
0.2 %		WG-17, 50 LB SK (100003623)											
3 lbm		SILICALITE - COMPACTED, 50 LB SK (100012223)											
0.125 lbm		POLY-E-FLAKE (101216940)											
7.318 Gal		FRESH WATER											
6	Water Displacement				169.709	bbl	8.34	.0	.0	.0			
Calculated Values		Pressures			Volumes								
Displacement		Shut In: Instant			Lost Returns			Cement Slurry			Pad		
Top Of Cement		5 Min			Cement Returns			Actual Displacement			Treatment		
Frac Gradient		15 Min			Spacers			Load and Breakdown			Total Job		
Rates													
Circulating		Mixing				Displacement				Avg. Job			
Cement Left In Pipe	Amount	82.08 ft	Reason	Shoe Joint									
Frac Ring # 1 @	ID		Frac ring # 2 @	ID		Frac Ring # 3 @	ID		Frac Ring # 4 @	ID			
The Information Stated Herein Is Correct					Customer Representative Signature								

The Road to Excellence Starts with Safety

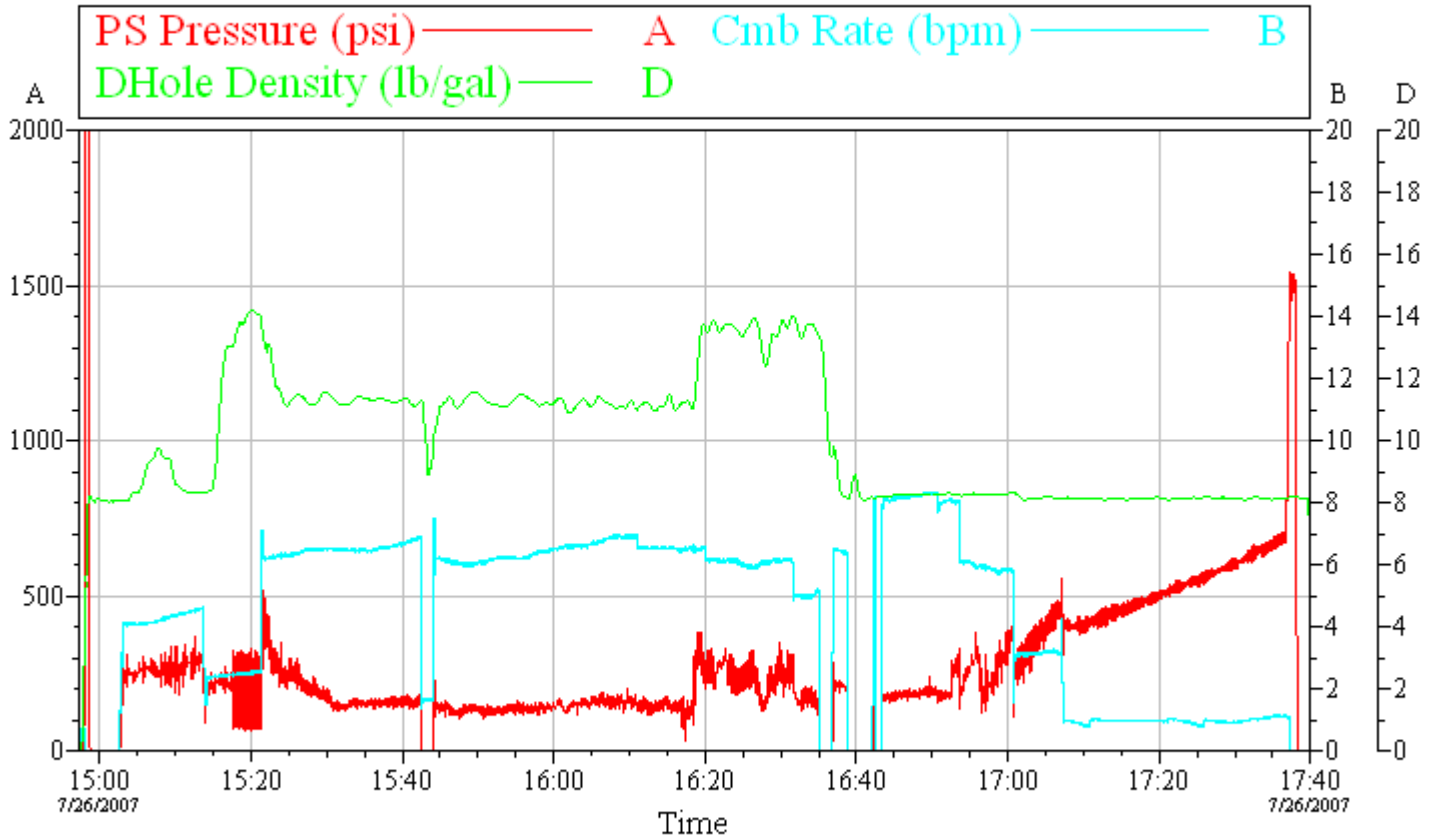
Sold To #: 344659	Ship To #: 2586169	Quote #:	Sales Order #: 5254018
Customer: CHESAPEAKE OPERATING INC EBUSINESS		Customer Rep: COOK, MIKE	
Well Name: WRD Federal	Well #: 4-23	API/UWI #:	
Field: WHITE RIVER DOME	City (SAP): UNKNOWN	County/Parish: Rio Blanco	State: Colorado
Legal Description: Section 23 Township 2N Range 97W			
Lat: N 0 deg. OR N 0 deg. 0 min. 0 secs.		Long: E 0 deg. OR E 0 deg. 0 min. 0 secs.	
Contractor: DHS		Rig/Platform Name/Num: DHS3	
Job Purpose: Cement Production Casing			Ticket Amount:
Well Type: Development Well		Job Type: Cement Production Casing	
Sales Person: JAMES, AARON		Srvc Supervisor: MUSIC, SHANE	MBU ID Emp #: 362772

Activity Description	Date/Time	Cht #	Rate bbl/min	Volume bbl		Pressure psig		Comments
				Stage	Total	Tubing	Casing	
Arrive at Location from Service Center	07/26/2007 07:00							
Assessment Of Location Safety Meeting	07/26/2007 12:30							
Safety Meeting - Pre Job	07/26/2007 14:20							
Pressure Test	07/26/2007 14:56						4000.0	
Pump Spacer	07/26/2007 15:02		4	10			230.0	Fresh water
Pump Spacer	07/26/2007 15:04		4	20			300.0	Superflush
Pump Spacer	07/26/2007 15:08		4	20			290.0	Fresh water
Pump 1st Stage Lead Slurry	07/26/2007 15:12		2	14			180.0	50-sks. @ 13.4#
Pump 2nd Stage Lead Slurry	07/26/2007 15:21		6	342			400.0	500-sks. @ 11.0#
Pump Tail Cement	07/26/2007 16:17		6	96			124.0	350-sks. @ 13.4#
Other	07/26/2007 16:31		5		84		160.0	lost returns, slow rate
Drop Plug	07/26/2007 16:35							wash pumps and lines
Pump Displacement	07/26/2007 16:43		8				170.0	kcl water
Displ Reached Cmmt	07/26/2007 16:52		8		70		270.0	
Other	07/26/2007 16:53		6		80		190.0	slow rate
Other	07/26/2007 17:00		3		120		270.0	slow rate
Other	07/26/2007 17:06		1		140		410.0	slow rate

Cementing Job Log

Activity Description	Date/Time	Cht #	Rate bbl/ min	Volume bbl		Pressure psig		Comments
				Stage	Total	Tubing	Casing	
Bump Plug	07/26/2007 17:36		1		169		780.0	
Check Floats	07/26/2007 17:37						1500. 0	floats held, never regained circulation through job

CHESAPEAKE 5-1/2" PRODUCTION



Customer: CHESAPEAKE
Well Description: DON HACKFORD

Job Date: 7/26/07
UWI:

Ticket #: 5254018

CemWin v1.7.2
26-Jul-07 17:47