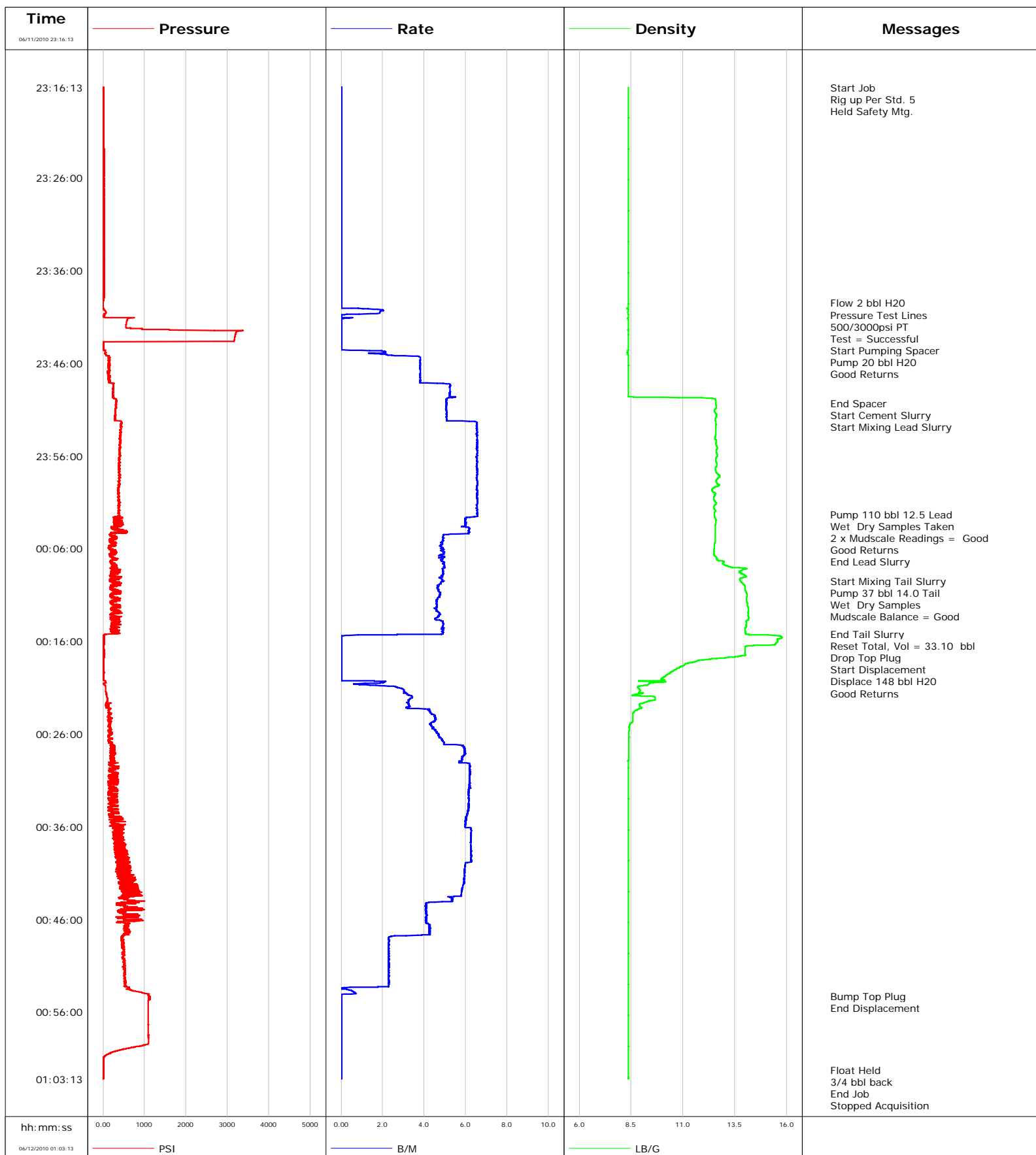


Well WF10A-21 K22 596
Field N. Parachute
Engineer Dustin C Krueger
Country United States

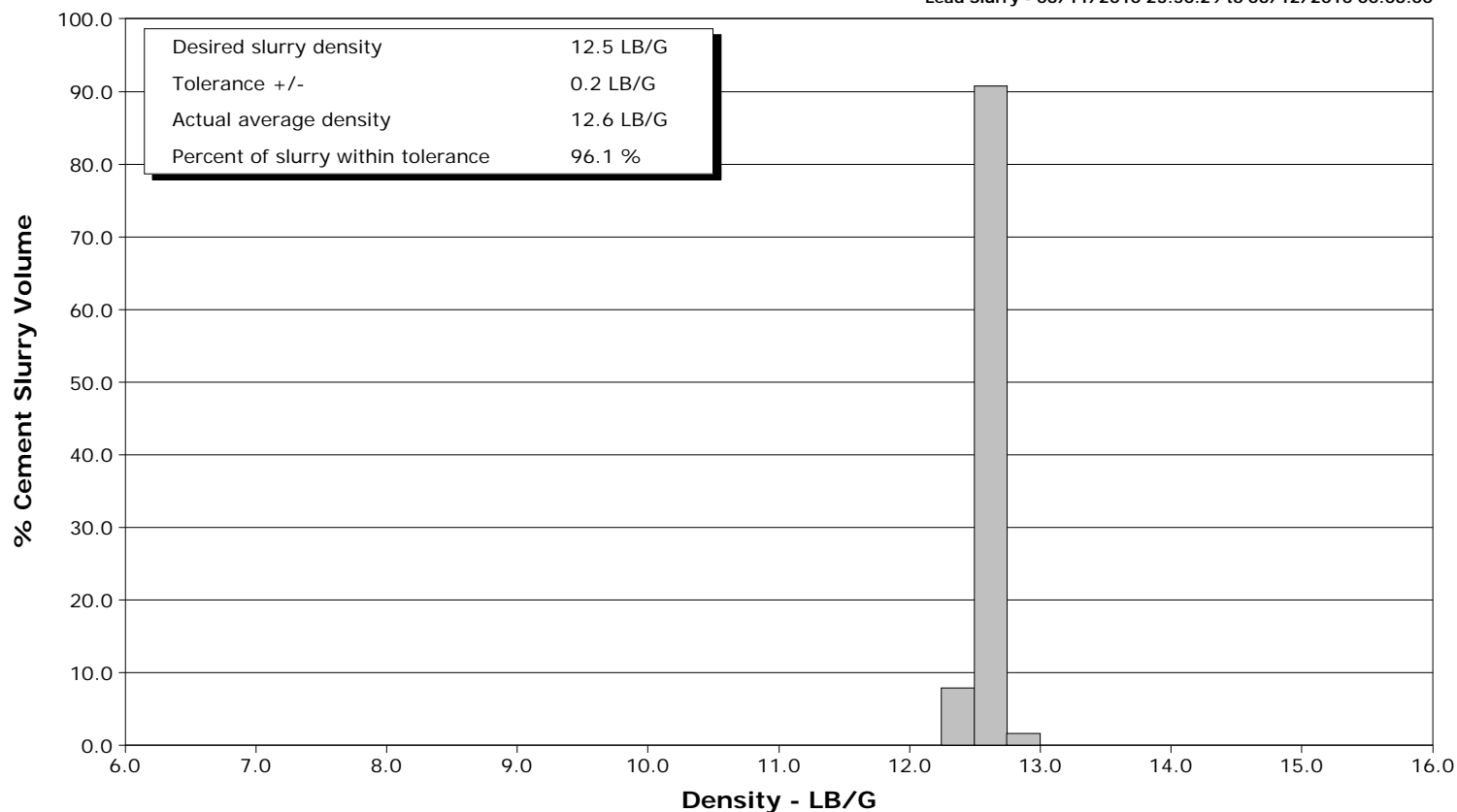
Client Encana
SIR No. 347477
Job Type 9 5/8" Surface
Job Date 6/11/2010



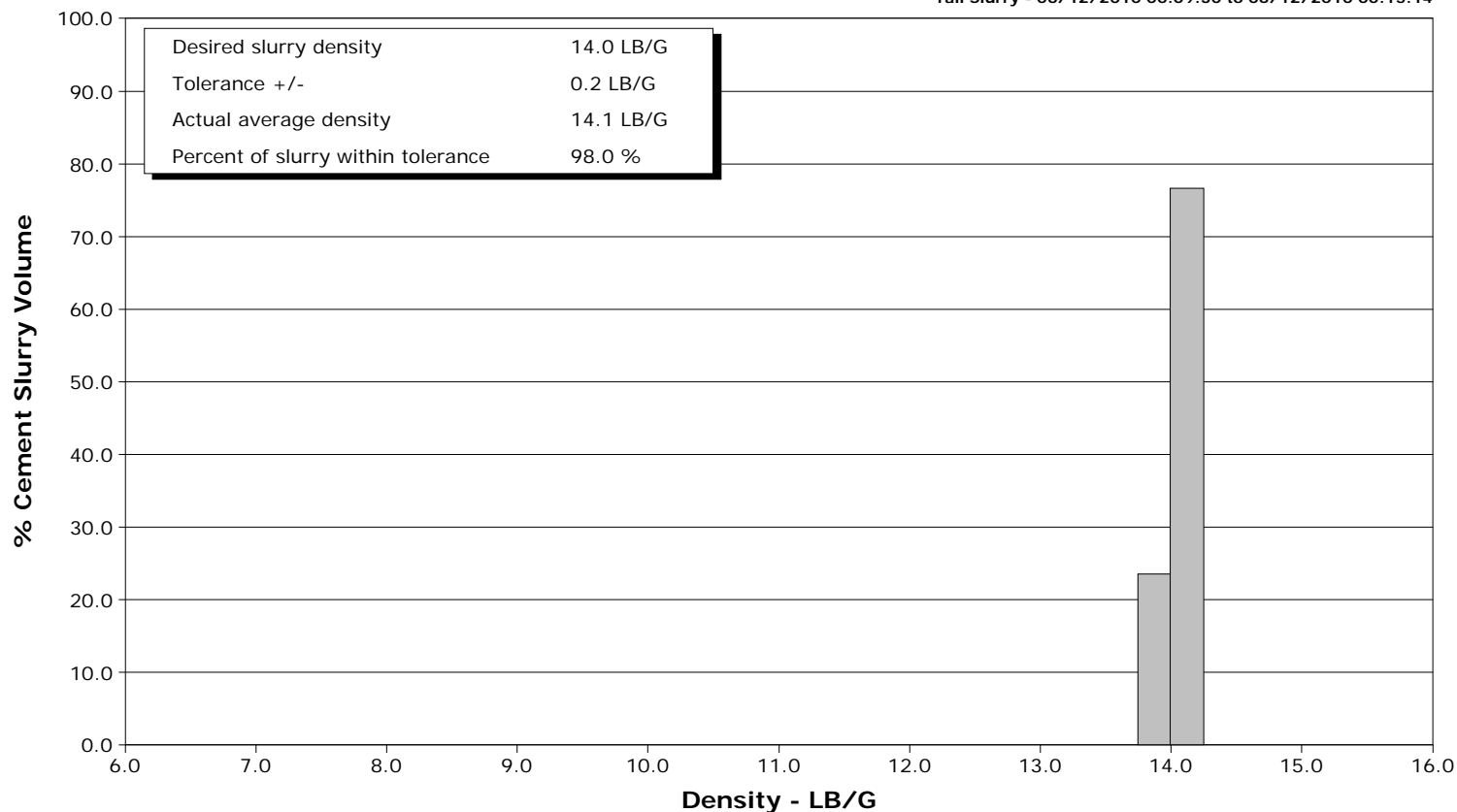
Well WF10A-21 K22 596
Field N. Parachute
Engineer Dustin C Krueger
Country United States

Client Encana
SIR No. 347477
Job Type 9 5/8" Surface
Job Date 6/11/2010

Lead Slurry - 06/11/2010 23:50:29 to 06/12/2010 00:06:00



Tail Slurry - 06/12/2010 00:09:30 to 06/12/2010 00:15:14



Well WF10A-21 K22 596 WF09D-21 K22 596			Field N. Parachute		Job Start Jun/11/2010	Customer Encana	Job Number 347477
Date	Time 24-hr clock	Treating Pressure PSI	Flow Rate B/M	Density LB/G	Volume BBL	Message	
06/11/2010	23:23:23	12	0.0	8.37	0.0		
06/11/2010	23:23:53	12	0.0	8.37	0.0		
06/11/2010	23:24:23	12	0.0	8.36	0.0		
06/11/2010	23:24:53	12	0.0	8.36	0.0		
06/11/2010	23:25:23	12	0.0	8.36	0.0		
06/11/2010	23:25:53	9	0.0	8.36	0.0		
06/11/2010	23:26:23	12	0.0	8.36	0.0		
06/11/2010	23:26:53	12	0.0	8.36	0.0		
06/11/2010	23:27:23	12	0.0	8.36	0.0		
06/11/2010	23:27:53	12	0.0	8.36	0.0		
06/11/2010	23:28:23	12	0.0	8.36	0.0		
06/11/2010	23:28:53	12	0.0	8.36	0.0		
06/11/2010	23:29:23	12	0.0	8.36	0.0		
06/11/2010	23:29:53	13	0.0	8.36	0.0		
06/11/2010	23:30:23	13	0.0	8.36	0.0		
06/11/2010	23:30:53	13	0.0	8.36	0.0		
06/11/2010	23:31:23	13	0.0	8.36	0.0		
06/11/2010	23:31:53	12	0.0	8.36	0.0		
06/11/2010	23:32:23	12	0.0	8.36	0.0		
06/11/2010	23:32:53	12	0.0	8.36	0.0		
06/11/2010	23:33:23	13	0.0	8.36	0.0		
06/11/2010	23:33:53	13	0.0	8.36	0.0		
06/11/2010	23:34:23	13	0.0	8.36	0.0		
06/11/2010	23:34:53	13	0.0	8.36	0.0		
06/11/2010	23:35:23	13	0.0	8.36	0.0		
06/11/2010	23:35:53	13	0.0	8.36	0.0		
06/11/2010	23:36:23	13	0.0	8.36	0.0		
06/11/2010	23:36:53	13	0.0	8.36	0.0		
06/11/2010	23:37:23	13	0.0	8.36	0.0		
06/11/2010	23:37:53	13	0.0	8.36	0.0		
06/11/2010	23:38:23	13	0.0	8.36	0.0		
06/11/2010	23:38:53	13	0.0	8.36	0.0		
06/11/2010	23:39:23	-1	0.0	8.36	0.0		
06/11/2010	23:39:25					Flow 2 bbl H2O	
06/11/2010	23:39:25	-1	0.0	8.36	0.0		
06/11/2010	23:39:53	-2	0.0	8.36	0.0		
06/11/2010	23:40:23	71	1.9	8.36	0.5		
06/11/2010	23:40:45					Pressure Test Lines	
06/11/2010	23:40:45	27	0.2	8.36	1.1		
06/11/2010	23:40:47					500/3000psi PT	
06/11/2010	23:40:47	24	0.0	8.36	1.1		
06/11/2010	23:40:48					Test = Successful	
06/11/2010	23:40:48	27	0.0	8.36	1.1		
06/11/2010	23:40:53	23	0.0	8.36	1.1		
06/11/2010	23:41:23	579	0.0	8.36	1.1		
06/11/2010	23:41:53	558	0.0	8.36	1.1		
06/11/2010	23:42:23	1602	0.0	8.35	1.1		
06/11/2010	23:42:53	3192	0.0	8.36	1.1		
06/11/2010	23:43:23	3170	0.0	8.36	1.1		
06/11/2010	23:43:49					Start Pumping Spacer	
06/11/2010	23:43:49	2	0.0	8.36	1.1		
06/11/2010	23:43:51					Pump 20 bbl H2O	
06/11/2010	23:43:51					Good Returns	
06/11/2010	23:43:51	1	0.0	8.36	1.1		

Well WF10A-21 K22 596 WF09D-21 K22 596			Field N. Parachute		Job Start Jun/11/2010		Customer Encana		Job Number 347477	
Date	Time 24-hr clock	Treating Pressure PSI	Flow Rate B/M	Density LB/G	Volume BBL	Message				
06/11/2010	23:44:23	10	0.0	8.36	1.1					
06/11/2010	23:44:53	75	2.0	8.33	1.7					
06/11/2010	23:45:23	144	3.8	8.36	3.0					
06/11/2010	23:45:53	149	3.8	8.37	4.9					
06/11/2010	23:46:23	126	3.8	8.37	6.8					
06/11/2010	23:46:53	163	3.8	8.37	8.7					
06/11/2010	23:47:23	158	3.8	8.37	10.6					
06/11/2010	23:47:53	140	3.8	8.36	12.5					
06/11/2010	23:48:23	249	5.3	8.36	14.8					
06/11/2010	23:48:53	254	5.2	8.36	17.4					
06/11/2010	23:49:23	258	5.2	8.36	20.0					
06/11/2010	23:49:53	304	5.1	12.54	22.6					
06/11/2010	23:50:20					End Spacer				
06/11/2010	23:50:20	310	5.1	12.59	24.9					
06/11/2010	23:50:22					Start Cement Slurry				
06/11/2010	23:50:22	327	5.1	12.59	25.1					
06/11/2010	23:50:23	322	5.1	12.59	25.2					
06/11/2010	23:50:29					Start Mixing Lead Slurry				
06/11/2010	23:50:29	318	5.1	12.59	25.7					
06/11/2010	23:50:53	302	5.1	12.58	27.7					
06/11/2010	23:51:23	305	5.1	12.56	30.2					
06/11/2010	23:51:53	282	5.1	12.57	32.8					
06/11/2010	23:52:23	458	6.5	12.59	35.5					
06/11/2010	23:52:53	417	6.5	12.59	38.8					
06/11/2010	23:53:23	432	6.6	12.58	42.1					
06/11/2010	23:53:53	411	6.5	12.55	45.3					
06/11/2010	23:54:23	424	6.6	12.60	48.6					
06/11/2010	23:54:53	403	6.5	12.61	51.9					
06/11/2010	23:55:23	405	6.5	12.62	55.2					
06/11/2010	23:55:53	401	6.5	12.65	58.4					
06/11/2010	23:56:23	397	6.5	12.59	61.7					
06/11/2010	23:56:53	384	6.5	12.63	65.0					
06/11/2010	23:57:23	381	6.6	12.56	68.3					
06/11/2010	23:57:53	383	6.5	12.65	71.5					
06/11/2010	23:58:23	418	6.5	12.70	74.8					
06/11/2010	23:58:53	386	6.6	12.62	78.1					
06/11/2010	23:59:23	397	6.6	12.53	81.4					
06/11/2010	23:59:53	366	6.6	12.44	84.6					
06/12/2010	00:00:23	391	6.6	12.50	87.9					
06/12/2010	00:00:53	379	6.6	12.54	91.2					
06/12/2010	00:01:23	366	6.5	12.51	94.5					
06/12/2010	00:01:53	414	6.5	12.55	97.8					
06/12/2010	00:02:18					Pump 110 bbl 12.5 Lead				
06/12/2010	00:02:18	384	6.6	12.51	100.5					
06/12/2010	00:02:19					Wet Dry Samples Taken				
06/12/2010	00:02:19	382	6.5	12.51	100.6					
06/12/2010	00:02:20					2 x Mudscale Readings = Good				
06/12/2010	00:02:20	382	6.5	12.51	100.7					
06/12/2010	00:02:23	381	6.5	12.51	101.0					
06/12/2010	00:02:53	286	6.0	12.57	104.2					
06/12/2010	00:03:02					Good Returns				
06/12/2010	00:03:02	306	6.0	12.59	105.1					
06/12/2010	00:03:23	379	6.0	12.57	107.2					
06/12/2010	00:03:53	403	6.2	12.57	110.2					

Well WF10A-21 K22 596 WF09D-21 K22 596			Field N. Parachute		Job Start Jun/11/2010	Customer Encana	Job Number 347477
Date	Time 24-hr clock	Treating Pressure PSI	Flow Rate B/M	Density LB/G	Volume BBL	Message	
06/12/2010	00:05:23	268	4.9	12.54	118.2		
06/12/2010	00:05:53	143	4.8	12.51	120.7		
06/12/2010	00:06:00					End Lead Slurry	
06/12/2010	00:06:00	163	4.8	12.51	121.2		
06/12/2010	00:06:23	260	5.0	12.50	123.1		
06/12/2010	00:06:53	220	5.0	12.58	125.6		
06/12/2010	00:07:23	190	4.9	12.96	128.0		
06/12/2010	00:07:53	285	5.0	13.15	130.5		
06/12/2010	00:08:23	372	4.9	13.80	132.9		
06/12/2010	00:08:53	277	4.9	13.98	135.4		
06/12/2010	00:09:23	160	4.8	13.74	137.8		
06/12/2010	00:09:30					Start Mixing Tail Slurry	
06/12/2010	00:09:30	183	4.9	13.77	138.4		
06/12/2010	00:09:53	423	4.7	13.92	140.2		
06/12/2010	00:09:54					Pump 37 bbl 14.0 Tail	
06/12/2010	00:09:54	349	4.7	13.93	140.3		
06/12/2010	00:10:23	177	4.7	14.00	142.6		
06/12/2010	00:10:38					Wet Dry Samples	
06/12/2010	00:10:38	436	4.7	14.03	143.7		
06/12/2010	00:10:39					Mudscale Balance = Good	
06/12/2010	00:10:39	409	4.7	14.03	143.8		
06/12/2010	00:10:53	426	4.8	14.08	144.9		
06/12/2010	00:11:23	425	4.7	14.06	147.3		
06/12/2010	00:11:53	182	4.6	14.09	149.6		
06/12/2010	00:12:23	427	4.6	14.15	151.9		
06/12/2010	00:12:53	375	4.7	14.14	154.2		
06/12/2010	00:13:23	246	4.7	14.18	156.6		
06/12/2010	00:13:53	419	4.9	14.05	158.9		
06/12/2010	00:14:23	187	4.9	14.05	161.4		
06/12/2010	00:14:53	209	4.9	13.99	163.8		
06/12/2010	00:15:14					End Tail Slurry	
06/12/2010	00:15:14	159	4.9	14.02	165.5		
06/12/2010	00:15:18					Reset Total, Vol = 33.10 bbl	
06/12/2010	00:15:18	27	2.7	14.17	165.8		
06/12/2010	00:15:19					Drop Top Plug	
06/12/2010	00:15:19	27	1.5	14.66	165.8		
06/12/2010	00:15:21					Start Displacement	
06/12/2010	00:15:21	19	0.4	15.31	165.9		
06/12/2010	00:15:23					Displace 148 bbl H2O	
06/12/2010	00:15:23	18	0.2	15.45	165.9		
06/12/2010	00:15:24					Good Returns	
06/12/2010	00:15:24	17	0.1	15.57	165.9		
06/12/2010	00:15:53	16	0.0	15.55	165.9		
06/12/2010	00:16:23	12	0.0	15.43	165.9		
06/12/2010	00:16:53	19	0.0	13.99	165.9		
06/12/2010	00:17:23	23	0.0	14.00	165.9		
06/12/2010	00:17:53	9	0.0	12.48	165.9		
06/12/2010	00:18:23	10	0.0	11.24	165.9		
06/12/2010	00:18:53	10	0.0	10.77	165.9		
06/12/2010	00:19:23	14	0.0	10.41	165.9		
06/12/2010	00:19:53	10	0.0	10.07	165.9		
06/12/2010	00:20:23	55	2.1	10.16	166.1		
06/12/2010	00:20:53	70	2.5	8.82	166.9		
06/12/2010	00:21:23	70	3.0	8.92	168.3		

Well WF10A-21 K22 596 WF09D-21 K22 596			Field N. Parachute		Job Start Jun/11/2010	Customer Encana	Job Number 347477
Date	Time 24-hr clock	Treating Pressure PSI	Flow Rate B/M	Density LB/G	Volume BBL	Message	
06/12/2010	00:22:23	108	3.3	9.49	171.6		
06/12/2010	00:22:53	144	3.3	8.91	173.2		
06/12/2010	00:23:23	170	4.2	8.80	174.9		
06/12/2010	00:23:53	201	4.4	8.59	177.1		
06/12/2010	00:24:23	203	4.6	8.59	179.3		
06/12/2010	00:24:53	183	4.3	8.46	181.5		
06/12/2010	00:25:23	196	4.4	8.42	183.7		
06/12/2010	00:25:53	214	4.6	8.40	186.0		
06/12/2010	00:26:23	141	4.7	8.39	188.3		
06/12/2010	00:26:53	138	4.9	8.39	190.8		
06/12/2010	00:27:23	213	5.9	8.39	193.4		
06/12/2010	00:27:53	196	6.0	8.38	196.4		
06/12/2010	00:28:23	221	5.9	8.38	199.4		
06/12/2010	00:28:53	286	5.8	8.36	202.3		
06/12/2010	00:29:23	217	6.2	8.37	205.3		
06/12/2010	00:29:53	152	6.2	8.36	208.4		
06/12/2010	00:30:23	157	6.2	8.36	211.5		
06/12/2010	00:30:53	270	6.2	8.37	214.6		
06/12/2010	00:31:23	368	6.2	8.37	217.7		
06/12/2010	00:31:53	154	6.2	8.37	220.8		
06/12/2010	00:32:23	130	6.1	8.37	223.9		
06/12/2010	00:32:53	202	6.1	8.37	226.9		
06/12/2010	00:33:23	219	6.2	8.37	230.0		
06/12/2010	00:33:53	126	6.1	8.37	233.1		
06/12/2010	00:34:23	294	6.1	8.37	236.2		
06/12/2010	00:34:53	326	6.0	8.37	239.2		
06/12/2010	00:35:23	254	6.0	8.37	242.2		
06/12/2010	00:35:53	438	6.0	8.37	245.2		
06/12/2010	00:36:23	414	6.3	8.37	248.3		
06/12/2010	00:36:53	429	6.3	8.37	251.4		
06/12/2010	00:37:23	258	6.3	8.37	254.5		
06/12/2010	00:37:53	421	6.3	8.37	257.7		
06/12/2010	00:38:23	387	6.2	8.37	260.8		
06/12/2010	00:38:53	307	6.3	8.37	263.9		
06/12/2010	00:39:23	641	6.3	8.37	267.1		
06/12/2010	00:39:53	358	6.1	8.37	270.2		
06/12/2010	00:40:23	342	6.0	8.37	273.2		
06/12/2010	00:40:53	622	5.9	8.37	276.2		
06/12/2010	00:41:23	649	5.9	8.37	279.1		
06/12/2010	00:41:53	472	5.9	8.37	282.1		
06/12/2010	00:42:23	762	5.9	8.37	285.1		
06/12/2010	00:42:53	654	5.8	8.37	288.0		
06/12/2010	00:43:23	811	5.8	8.37	290.9		
06/12/2010	00:43:53	609	5.3	8.37	293.6		
06/12/2010	00:44:23	531	4.1	8.37	296.0		
06/12/2010	00:44:53	947	4.1	8.37	298.0		
06/12/2010	00:45:23	475	4.1	8.37	300.1		
06/12/2010	00:45:53	535	4.1	8.37	302.1		
06/12/2010	00:46:23	518	4.1	8.37	304.2		
06/12/2010	00:46:53	505	4.2	8.37	306.3		
06/12/2010	00:47:23	530	4.2	8.37	308.4		
06/12/2010	00:47:53	482	2.3	8.37	310.3		
06/12/2010	00:48:23	451	2.3	8.37	311.5		
06/12/2010	00:48:53	476	2.3	8.37	312.6		

Well			Field		Job Start	Customer	Job Number
WF10A-21 K22 596 WF09D-21 K22 596			N. Parachute		Jun/11/2010	Encana	347477
Date	Time 24-hr clock	Treating Pressure PSI	Flow Rate B/M	Density LB/G	Volume BBL	Message	
06/12/2010	00:49:53	527	2.3	8.37	314.9		
06/12/2010	00:50:23	516	2.3	8.37	316.1		
06/12/2010	00:50:53	526	2.3	8.37	317.2		
06/12/2010	00:51:23	497	2.3	8.37	318.4		
06/12/2010	00:51:53	515	2.3	8.37	319.5		
06/12/2010	00:52:23	540	2.3	8.37	320.7		
06/12/2010	00:52:53	549	2.3	8.37	321.8		
06/12/2010	00:53:23	615	0.1	8.37	322.8		
06/12/2010	00:53:53	923	0.6	8.37	323.0		
06/12/2010	00:54:18					Bump Top Plug	
06/12/2010	00:54:18	1140	0.0	8.37	323.1		
06/12/2010	00:54:19					End Displacement	
06/12/2010	00:54:19	1134	0.0	8.37	323.1		
06/12/2010	00:54:23	1140	0.0	8.37	323.1		
06/12/2010	00:54:53	1092	0.0	8.37	323.1		
06/12/2010	00:55:23	1092	0.0	8.37	323.1		
06/12/2010	00:55:53	1093	0.0	8.37	323.1		
06/12/2010	00:56:23	1093	0.0	8.37	323.1		
06/12/2010	00:56:53	1094	0.0	8.37	323.1		
06/12/2010	00:57:23	1094	0.0	8.37	323.1		
06/12/2010	00:57:53	1094	0.0	8.37	323.1		
06/12/2010	00:58:23	1095	0.0	8.37	323.1		
06/12/2010	00:58:53	1096	0.0	8.37	323.1		
06/12/2010	00:59:23	1096	0.0	8.37	323.1		
06/12/2010	00:59:53	645	0.0	8.37	323.1		
06/12/2010	01:00:23	199	0.0	8.37	323.1		
06/12/2010	01:00:53	19	0.0	8.37	323.1		
06/12/2010	01:01:23	1	0.0	8.38	323.1		
06/12/2010	01:01:53	1	0.0	8.38	323.1		
06/12/2010	01:02:14					Float Held	
06/12/2010	01:02:14	1	0.0	8.37	323.1		
06/12/2010	01:02:23	2	0.0	8.38	323.1		
06/12/2010	01:02:53	1	0.0	8.38	323.1		
06/12/2010	01:03:07					3/4 bbl back	
06/12/2010	01:03:07	1	0.0	8.37	323.1		
06/12/2010	01:03:08					End Job	
06/12/2010	01:03:08	1	0.0	8.37	323.1		

Post Job Summary

Average Pump Rates, bbl/min					Volume of Fluid Injected, bbl			
Slurry 4.0	N2	Mud 0.0	Maximum Rate 6.5	Total Slurry 147.0	Mud 0.0	Spacer 20.0	N2	
Treating Pressure Summary, psi					Breakdown Fluid			
Maximum 3000	Final 1100	Average 0	Bump Plug to 1100	Breakdown	Type FreshWater	Volume 360.0 bbl	Density 8.34 lb/gal	
Avg. N2 Percent		Designed Slurry Volume 148.0 bbl		Displacement 148.0 bbl	Mix Water Temp 70 degF	Cement Circulated to Surface? <input type="checkbox"/>	Volume 0.0 bbl	
						Washed Thru Perfs <input type="checkbox"/>	To	
Customer or Authorized Representative Steve Record			Schlumberger Supervisor Dustin C Krueger			Circulation Lost <input type="checkbox"/>	Job Completed <input checked="" type="checkbox"/>	
						-	-	