

PETROLEUM DEVELOPMENT CORP Weld County CO

Well Name: **Wilson 34-34H**

Surface Location: Wilson 34-34H Pad Sec.34-T7N-R63W

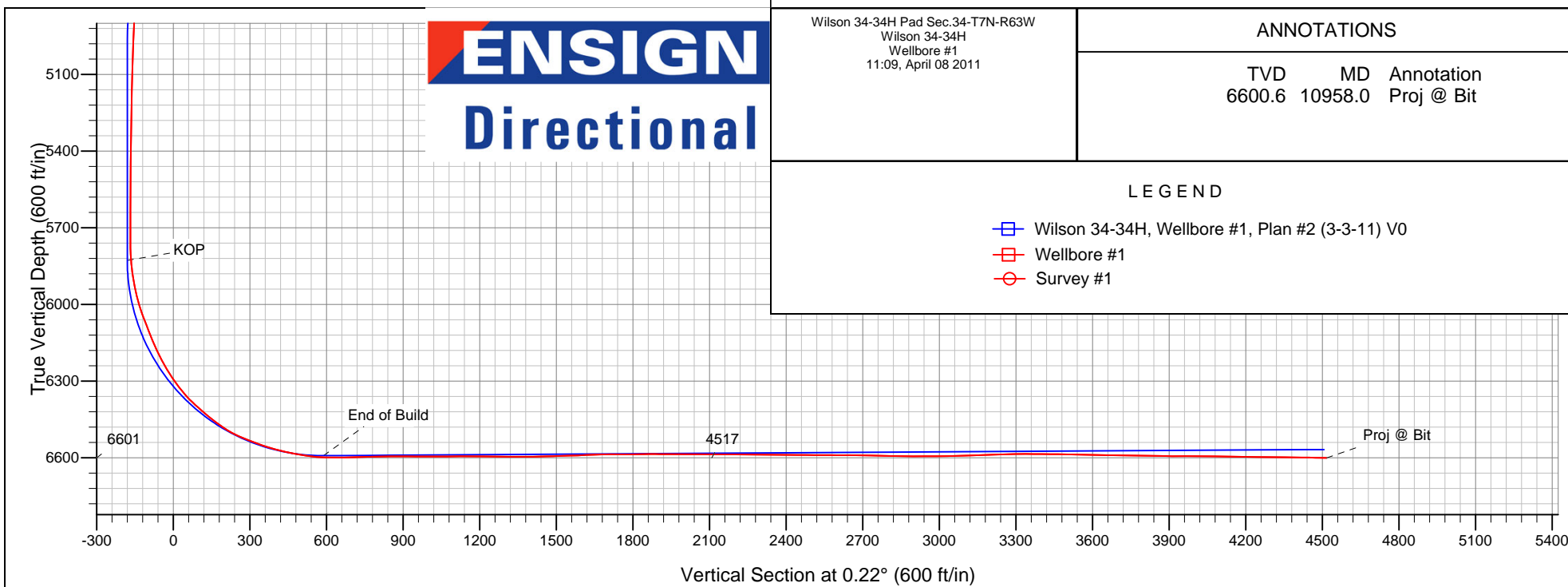
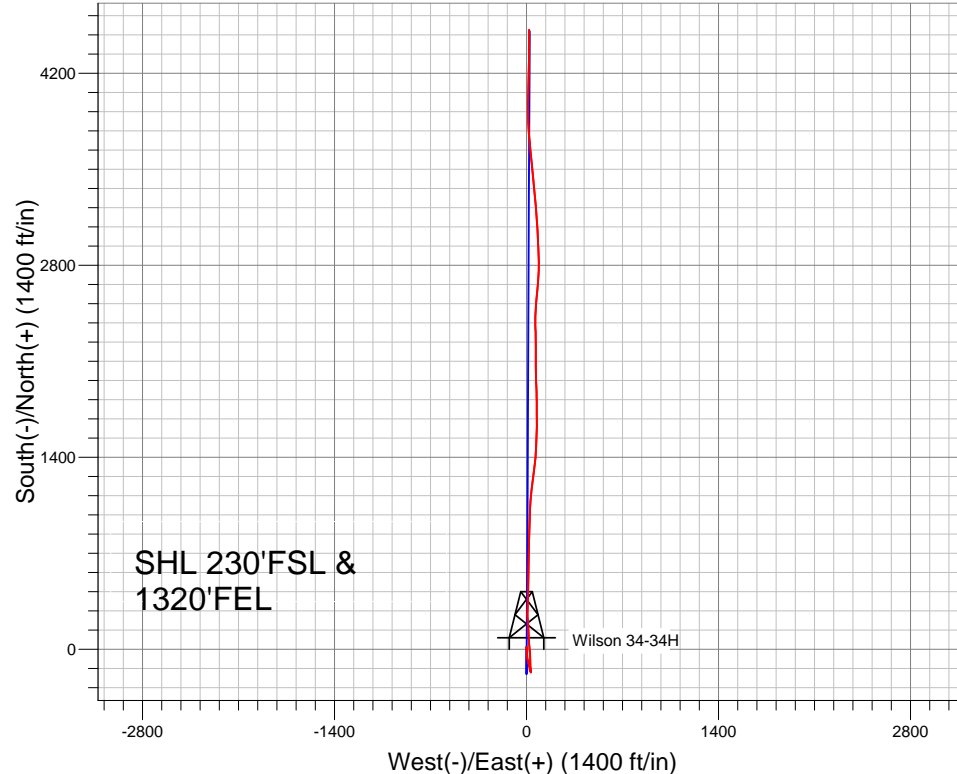
North American Datum 1983 , US State Plane 1983 , Colorado Northern Zone

Ground Elevation: 4714.0

+N/-S	+E/-W	Northing	Easting	Latitude	Longitude	Slot
0.0	0.0	1435424.06	3300858.03	40° 31' 24.960 N	104° 25' 3.936 W	
RKB Ensign 32 - 15' WELL @ 4729.0ft (RKB Ensign 32 - 15')						

FINAL SURVEY

Projected Bottom Hole Location
10958' MD 6601' TVD 4517' N & 17' E of
SHL
89.1 degree Incl @ .20 degree AZM





Directional

PETROLEUM DEVELOPMENT CORP Weld County CO

SEC.34-T7N-R63W

Wilson 34-34H Pad Sec.34-T7N-R63W

Wilson 34-34H

Wellbore #1

Survey: Survey #1

Standard Survey Report

08 April, 2011

Company:	PETROLEUM DEVELOPMENT CORP Weld County CO	Local Co-ordinate Reference:	Well Wilson 34-34H
Project:	SEC.34-T7N-R63W	TVD Reference:	WELL @ 4729.0ft (RKB Ensign 32 - 15')
Site:	Wilson 34-34H Pad Sec.34-T7N-R63W	MD Reference:	WELL @ 4729.0ft (RKB Ensign 32 - 15')
Well:	Wilson 34-34H	North Reference:	True
Wellbore:	Wellbore #1	Survey Calculation Method:	Minimum Curvature
Design:	Wellbore #1	Database:	Landmark

Project	SEC.34-T7N-R63W, Weld County, Colorado		
Map System:	US State Plane 1983	System Datum:	Mean Sea Level
Geo Datum:	North American Datum 1983		Using Well Reference Point
Map Zone:	Colorado Northern Zone		Using geodetic scale factor

Site		Wilson 34-34H Pad Sec.34-T7N-R63W			
Site Position:		Northing:	1,435,424.08ft	Latitude:	40° 31' 24.960 N
From:	Lat/Long	Easting:	3,300,858.03ft	Longitude:	104° 25' 3.936 W
Position Uncertainty:	0.0 ft	Slot Radius:	"	Grid Convergence:	0.70 °

Well	Wilson 34-34H					
Well Position	+N-S	0.0 ft	Northing:	1,435,424.06 ft	Latitude:	40° 31' 24.960 N
	+E-W	0.0 ft	Easting:	3,300,858.03 ft	Longitude:	104° 25' 3.936 W
Position Uncertainty		0.0 ft	Wellhead Elevation:	ft	Ground Level:	4,714.0 ft

Wellbore	Wellbore #1				
Magnetics	Model Name	Sample Date	Declination (°)	Dip Angle (°)	Field Strength (nT)
	IGRF2010	1/19/2011	8.74	67.22	53,277

Design	Wellbore #1				
Audit Notes:					
Version:	1.0	Phase:	ACTUAL	Tie On Depth:	0.0
Vertical Section:	Depth From (TVD) (ft)	+N/-S (ft)	+E/-W (ft)	Direction (°)	
	0.0	0.0	0.0	0.22	

Survey Program	Date	4/8/2011			
From (ft)	To (ft)	Survey (Wellbore)	Tool Name	Description	
985.0	10,958.0	Survey #1 (Wellbore #1)	MWD	MWD - Standard	

Survey										
Measured Depth (ft)	Inclination (°)	Azimuth (°)	Vertical Depth (ft)	+N/-S (ft)	+E/-W (ft)	Vertical Section (ft)	Dogleg Rate (°/100ft)	Build Rate (°/100ft)	Turn Rate (°/100ft)	
0.0	0.00	0.00	0.0	0.0	0.0	0.0	0.00	0.00	0.00	
0.3	0.00	149.50	0.3	0.0	0.0	0.0	0.00	0.00	0.00	
HARDLINE SHL 460°FSL - HARDLINE BHL 460°FNL										
985.0	0.20	149.50	985.0	-1.5	0.9	-1.5	0.02	0.02	0.00	
1,078.0	0.80	347.40	1,078.0	-1.0	0.8	-1.0	1.07	0.65	-174.30	
1,172.0	0.80	2.10	1,172.0	0.3	0.7	0.3	0.22	0.00	15.64	
1,265.0	0.90	359.40	1,265.0	1.7	0.7	1.7	0.12	0.11	-2.90	
1,358.0	1.10	347.30	1,358.0	3.3	0.5	3.3	0.31	0.22	-13.01	
1,452.0	1.00	340.90	1,451.9	4.9	0.0	4.9	0.16	-0.11	-6.81	
1,545.0	1.20	355.70	1,544.9	6.7	-0.3	6.7	0.37	0.22	15.91	
1,639.0	1.10	4.50	1,638.9	8.6	-0.3	8.6	0.22	-0.11	9.36	
1,732.0	1.10	338.80	1,731.9	10.3	-0.6	10.3	0.53	0.00	-27.63	

Company:	PETROLEUM DEVELOPMENT CORP Weld County CO	Local Co-ordinate Reference:	Well Wilson 34-34H
Project:	SEC.34-T7N-R63W	TVD Reference:	WELL @ 4729.0ft (RKB Ensign 32 - 15')
Site:	Wilson 34-34H Pad Sec.34-T7N-R63W	MD Reference:	WELL @ 4729.0ft (RKB Ensign 32 - 15')
Well:	Wilson 34-34H	North Reference:	True
Wellbore:	Wellbore #1	Survey Calculation Method:	Minimum Curvature
Design:	Wellbore #1	Database:	Landmark

Survey									
Measured Depth (ft)	Inclination (°)	Azimuth (°)	Vertical Depth (ft)	+N/-S (ft)	+E/-W (ft)	Vertical Section (ft)	Dogleg Rate (°/100ft)	Build Rate (°/100ft)	Turn Rate (°/100ft)
1,825.0	1.10	336.30	1,824.9	11.9	-1.2	11.9	0.05	0.00	-2.69
1,918.0	1.00	338.00	1,917.9	13.5	-1.9	13.5	0.11	-0.11	1.83
2,011.0	1.00	331.20	2,010.8	15.0	-2.6	15.0	0.13	0.00	-7.31
2,104.0	0.70	319.40	2,103.8	16.1	-3.4	16.1	0.37	-0.32	-12.69
2,197.0	0.40	328.70	2,196.8	16.8	-3.9	16.8	0.34	-0.32	10.00
2,290.0	0.20	43.10	2,289.8	17.2	-4.0	17.2	0.43	-0.22	80.00
2,383.0	0.40	96.40	2,382.8	17.3	-3.5	17.3	0.35	0.22	57.31
2,477.0	0.80	96.00	2,476.8	17.2	-2.5	17.2	0.43	0.43	-0.43
2,570.0	0.70	103.20	2,569.8	17.0	-1.3	17.0	0.15	-0.11	7.74
2,663.0	1.60	179.50	2,662.8	15.6	-0.8	15.6	1.71	0.97	82.04
2,756.0	3.60	176.40	2,755.7	11.4	-0.6	11.4	2.16	2.15	-3.33
2,849.0	4.70	164.10	2,848.5	4.8	0.6	4.8	1.52	1.18	-13.23
2,942.0	5.50	174.10	2,941.1	-3.3	2.1	-3.3	1.28	0.86	10.75
3,034.0	5.40	175.10	3,032.7	-12.0	3.0	-12.0	0.15	-0.11	1.09
3,127.0	5.20	180.10	3,125.3	-20.6	3.3	-20.6	0.54	-0.22	5.38
3,220.0	4.60	179.10	3,217.9	-28.5	3.4	-28.5	0.65	-0.65	-1.08
3,312.0	3.90	188.40	3,309.7	-35.3	3.0	-35.3	1.07	-0.76	10.11
3,406.0	3.70	175.20	3,403.5	-41.5	2.8	-41.5	0.95	-0.21	-14.04
3,499.0	4.00	177.10	3,496.3	-47.7	3.2	-47.7	0.35	0.32	2.04
3,593.0	4.80	176.60	3,590.0	-54.9	3.6	-54.9	0.85	0.85	-0.53
3,686.0	5.40	169.10	3,682.6	-63.1	4.6	-63.1	0.96	0.65	-8.06
3,778.0	6.20	161.50	3,774.2	-72.1	7.0	-72.1	1.20	0.87	-8.26
3,872.0	7.00	164.50	3,867.5	-82.4	10.2	-82.4	0.93	0.85	3.19
3,965.0	6.50	171.90	3,959.9	-93.1	12.4	-93.0	1.08	-0.54	7.96
4,057.0	5.70	172.00	4,051.4	-102.8	13.8	-102.7	0.87	-0.87	0.11
4,150.0	4.60	165.20	4,144.0	-110.9	15.4	-110.9	1.35	-1.18	-7.31
4,243.0	3.70	166.90	4,236.7	-117.5	17.0	-117.4	0.98	-0.97	1.83
4,336.0	4.40	164.10	4,329.5	-123.8	18.7	-123.8	0.78	0.75	-3.01
4,429.0	4.40	161.50	4,422.2	-130.6	20.8	-130.6	0.21	0.00	-2.80
4,522.0	3.60	163.40	4,515.0	-136.8	22.8	-136.7	0.87	-0.86	2.04
4,615.0	3.20	189.90	4,607.9	-142.2	23.2	-142.1	1.73	-0.43	28.49
4,708.0	2.90	187.50	4,700.7	-147.1	22.4	-147.0	0.35	-0.32	-2.58
4,801.0	1.80	161.30	4,793.6	-150.8	22.6	-150.7	1.62	-1.18	-28.17
4,894.0	1.90	164.60	4,886.6	-153.7	23.4	-153.6	0.16	0.11	3.55
4,987.0	2.30	154.80	4,979.5	-156.8	24.7	-156.7	0.58	0.43	-10.54
5,080.0	2.30	139.50	5,072.5	-159.9	26.7	-159.8	0.66	0.00	-16.45
5,173.0	1.30	139.70	5,165.4	-162.2	28.6	-162.1	1.08	-1.08	0.22
5,267.0	1.00	160.20	5,259.4	-163.7	29.5	-163.6	0.54	-0.32	21.81
5,361.0	0.80	166.60	5,353.4	-165.2	29.9	-165.0	0.24	-0.21	6.81
5,454.0	0.70	180.10	5,446.4	-166.4	30.1	-166.2	0.22	-0.11	14.52
5,547.0	0.30	183.80	5,539.4	-167.2	30.1	-167.1	0.43	-0.43	3.98
5,641.0	0.30	183.60	5,633.4	-167.7	30.0	-167.5	0.00	0.00	-0.21
5,725.0	0.40	123.10	5,717.4	-168.0	30.3	-167.9	0.43	0.12	-72.02
5,756.0	0.20	20.00	5,748.4	-168.0	30.4	-167.9	1.57	-0.65	-332.58
5,787.0	1.40	352.00	5,779.4	-167.6	30.4	-167.5	3.96	3.87	-90.32
5,818.0	3.40	350.40	5,810.3	-166.3	30.1	-166.2	6.45	6.45	-5.16
5,849.0	5.50	356.40	5,841.2	-163.9	29.9	-163.8	6.93	6.77	19.35
5,880.0	7.30	359.80	5,872.0	-160.5	29.8	-160.4	5.93	5.81	10.97
5,911.0	9.20	0.00	5,902.7	-156.0	29.8	-155.9	6.13	6.13	0.65
5,942.0	11.00	359.00	5,933.2	-150.6	29.7	-150.5	5.83	5.81	-3.23
5,973.0	13.30	356.90	5,963.5	-144.1	29.5	-144.0	7.55	7.42	-6.77
6,004.0	16.20	354.70	5,993.5	-136.2	28.9	-136.1	9.53	9.35	-7.10
6,035.0	19.10	355.20	6,023.1	-126.9	28.1	-126.8	9.37	9.35	1.61
6,066.0	20.90	356.50	6,052.2	-116.3	27.3	-116.2	5.98	5.81	4.19

Company:	PETROLEUM DEVELOPMENT CORP Weld County CO	Local Co-ordinate Reference:	Well Wilson 34-34H
Project:	SEC.34-T7N-R63W	TVD Reference:	WELL @ 4729.0ft (RKB Ensign 32 - 15')
Site:	Wilson 34-34H Pad Sec.34-T7N-R63W	MD Reference:	WELL @ 4729.0ft (RKB Ensign 32 - 15')
Well:	Wilson 34-34H	North Reference:	True
Wellbore:	Wellbore #1	Survey Calculation Method:	Minimum Curvature
Design:	Wellbore #1	Database:	Landmark

Survey									
Measured Depth (ft)	Inclination (°)	Azimuth (°)	Vertical Depth (ft)	+N/-S (ft)	+E/-W (ft)	Vertical Section (ft)	Dogleg Rate (°/100ft)	Build Rate (°/100ft)	Turn Rate (°/100ft)
6,097.0	21.60	357.60	6,081.1	-105.1	26.7	-105.0	2.60	2.26	3.55
6,128.0	21.60	358.50	6,109.9	-93.7	26.4	-93.6	1.07	0.00	2.90
6,158.0	22.00	359.90	6,137.8	-82.5	26.2	-82.4	2.19	1.33	4.67
6,189.0	23.80	0.00	6,166.3	-70.5	26.2	-70.4	5.81	5.81	0.32
6,220.0	26.10	358.30	6,194.4	-57.4	26.0	-57.3	7.77	7.42	-5.48
6,251.0	28.40	357.50	6,222.0	-43.2	25.5	-43.1	7.51	7.42	-2.58
6,282.0	30.50	355.60	6,249.0	-28.0	24.5	-27.9	7.41	6.77	-6.13
6,313.0	33.00	353.50	6,275.3	-11.8	23.0	-11.7	8.82	8.06	-6.77
6,344.0	35.30	353.60	6,301.0	5.5	21.0	5.6	7.42	7.42	0.32
6,375.0	37.90	354.70	6,325.9	23.9	19.1	24.0	8.65	8.39	3.55
6,406.0	41.10	355.90	6,349.8	43.6	17.5	43.6	10.61	10.32	3.87
6,436.0	44.30	357.40	6,371.8	63.9	16.4	63.9	11.19	10.67	5.00
6,468.0	47.60	357.80	6,394.1	86.8	15.4	86.9	10.35	10.31	1.25
6,498.0	48.90	357.60	6,414.1	109.2	14.5	109.3	4.36	4.33	-0.67
6,530.0	50.80	355.90	6,434.7	133.6	13.1	133.7	7.19	5.94	-5.31
6,561.0	51.90	355.80	6,454.0	157.8	11.4	157.8	3.56	3.55	-0.32
6,592.0	54.80	355.80	6,472.6	182.6	9.5	182.6	9.35	9.35	0.00
6,623.0	57.80	356.40	6,489.7	208.3	7.8	208.3	9.81	9.68	1.94
6,654.0	62.00	358.00	6,505.3	235.1	6.5	235.1	14.26	13.55	5.16
6,685.0	66.40	359.70	6,518.8	263.0	5.9	263.0	15.03	14.19	5.48
6,716.0	68.70	1.40	6,530.6	291.6	6.2	291.6	8.98	7.42	5.48
6,747.0	70.00	1.70	6,541.6	320.6	7.0	320.6	4.29	4.19	0.97
6,778.0	71.20	1.40	6,551.8	349.9	7.8	349.9	3.98	3.87	-0.97
6,809.0	73.10	1.40	6,561.4	379.3	8.5	379.4	6.13	6.13	0.00
6,840.0	75.50	1.30	6,569.7	409.2	9.2	409.2	7.75	7.74	-0.32
6,871.0	77.40	1.50	6,577.0	439.3	9.9	439.3	6.16	6.13	0.65
6,902.0	78.90	1.50	6,583.4	469.6	10.7	469.7	4.84	4.84	0.00
6,933.0	80.30	1.80	6,589.0	500.1	11.6	500.2	4.62	4.52	0.97
6,964.0	82.40	1.80	6,593.6	530.7	12.6	530.8	6.77	6.77	0.00
6,994.0	85.10	2.20	6,596.9	560.5	13.6	560.6	9.10	9.00	1.33
7,026.0	87.90	1.40	6,598.8	592.5	14.6	592.5	9.10	8.75	-2.50
7,095.0	91.20	0.70	6,599.4	661.4	15.9	661.5	4.89	4.78	-1.01
7,128.0	91.70	1.00	6,598.6	694.4	16.4	694.5	1.77	1.52	0.91
7,159.0	91.60	0.80	6,597.7	725.4	16.9	725.5	0.72	-0.32	-0.65
7,191.0	91.30	0.00	6,596.8	757.4	17.1	757.5	2.67	-0.94	-2.50
7,223.0	91.40	1.20	6,596.1	789.4	17.4	789.4	3.76	0.31	3.75
7,255.0	91.20	0.20	6,595.4	821.4	17.8	821.4	3.19	-0.63	-3.13
7,287.0	90.30	1.10	6,595.0	853.4	18.2	853.4	3.98	-2.81	2.81
7,319.0	90.20	2.20	6,594.8	885.4	19.1	885.4	3.45	-0.31	3.44
7,352.0	89.30	2.10	6,595.0	918.3	20.3	918.4	2.74	-2.73	-0.30
7,384.0	89.40	2.00	6,595.3	950.3	21.5	950.4	0.44	0.31	-0.31
7,415.0	90.70	2.40	6,595.3	981.3	22.7	981.4	4.39	4.19	1.29
7,447.0	89.80	2.20	6,595.2	1,013.3	24.0	1,013.3	2.88	-2.81	-0.63
7,479.0	89.80	3.70	6,595.3	1,045.2	25.6	1,045.3	4.69	0.00	4.69
7,510.0	90.60	4.30	6,595.2	1,076.1	27.8	1,076.2	3.23	2.58	1.94
7,542.0	90.10	5.10	6,595.0	1,108.0	30.4	1,108.1	2.95	-1.56	2.50
7,574.0	90.20	6.00	6,594.9	1,139.9	33.5	1,140.0	2.83	0.31	2.81
7,606.0	89.80	6.50	6,594.9	1,171.7	37.0	1,171.8	2.00	-1.25	1.56
7,638.0	89.80	7.20	6,595.0	1,203.5	40.8	1,203.6	2.19	0.00	2.19
7,670.0	89.60	7.30	6,595.2	1,235.2	44.8	1,235.4	0.70	-0.63	0.31
7,702.0	89.20	7.60	6,595.5	1,266.9	49.0	1,267.1	1.56	-1.25	0.94
7,734.0	89.30	7.20	6,595.9	1,298.7	53.1	1,298.9	1.29	0.31	-1.25
7,766.0	89.50	6.90	6,596.2	1,330.4	57.0	1,330.6	1.13	0.63	-0.94

Company:	PETROLEUM DEVELOPMENT CORP Weld County CO	Local Co-ordinate Reference:	Well Wilson 34-34H
Project:	SEC.34-T7N-R63W	TVD Reference:	WELL @ 4729.0ft (RKB Ensign 32 - 15')
Site:	Wilson 34-34H Pad Sec.34-T7N-R63W	MD Reference:	WELL @ 4729.0ft (RKB Ensign 32 - 15')
Well:	Wilson 34-34H	North Reference:	True
Wellbore:	Wellbore #1	Survey Calculation Method:	Minimum Curvature
Design:	Wellbore #1	Database:	Landmark

Survey									
Measured Depth (ft)	Inclination (°)	Azimuth (°)	Vertical Depth (ft)	+N/-S (ft)	+E/-W (ft)	Vertical Section (ft)	Dogleg Rate (°/100ft)	Build Rate (°/100ft)	Turn Rate (°/100ft)
7,798.0	89.60	5.40	6,596.5	1,362.2	60.4	1,362.5	4.70	0.31	-4.69
7,830.0	91.00	4.30	6,596.3	1,394.1	63.1	1,394.4	5.56	4.38	-3.44
7,862.0	91.30	3.70	6,595.7	1,426.0	65.4	1,426.3	2.10	0.94	-1.88
7,893.0	91.60	3.30	6,594.9	1,457.0	67.3	1,457.2	1.61	0.97	-1.29
7,925.0	92.10	3.50	6,593.9	1,488.9	69.2	1,489.1	1.68	1.56	0.63
7,957.0	92.00	3.20	6,592.7	1,520.8	71.0	1,521.1	0.99	-0.31	-0.94
7,989.0	91.40	1.20	6,591.8	1,552.8	72.3	1,553.0	6.52	-1.88	-6.25
8,021.0	92.00	1.10	6,590.8	1,584.8	72.9	1,585.0	1.90	1.88	-0.31
8,052.0	92.70	0.90	6,589.6	1,615.7	73.4	1,616.0	2.35	2.26	-0.65
8,085.0	91.70	0.60	6,588.3	1,648.7	73.9	1,649.0	3.16	-3.03	-0.91
8,116.0	91.10	0.00	6,587.5	1,679.7	74.0	1,680.0	2.74	-1.94	-1.94
8,148.0	90.50	359.90	6,587.1	1,711.7	74.0	1,712.0	1.90	-1.88	-0.31
8,180.0	89.30	359.80	6,587.1	1,743.7	73.9	1,744.0	3.76	-3.75	-0.31
8,212.0	90.00	0.20	6,587.3	1,775.7	73.9	1,776.0	2.52	2.19	1.25
8,244.0	90.70	358.50	6,587.1	1,807.7	73.6	1,807.9	5.75	2.19	-5.31
8,276.0	91.50	358.60	6,586.5	1,839.7	72.8	1,839.9	2.52	2.50	0.31
8,308.0	90.60	358.50	6,585.9	1,871.6	71.9	1,871.9	2.83	-2.81	-0.31
8,340.0	89.00	358.40	6,586.0	1,903.6	71.1	1,903.9	5.01	-5.00	-0.31
8,372.0	89.20	357.40	6,586.6	1,935.6	69.9	1,935.9	3.19	0.63	-3.13
8,404.0	89.60	358.50	6,586.9	1,967.6	68.8	1,967.8	3.66	1.25	3.44
8,436.0	89.90	358.40	6,587.0	1,999.6	67.9	1,999.8	0.99	0.94	-0.31
8,467.0	89.40	358.30	6,587.2	2,030.6	67.0	2,030.8	1.64	-1.61	-0.32
8,499.0	90.60	359.50	6,587.2	2,062.6	66.4	2,062.8	5.30	3.75	3.75
8,531.0	91.10	359.90	6,586.7	2,094.6	66.2	2,094.8	2.00	1.56	1.25
8,563.0	89.90	0.60	6,586.5	2,126.5	66.4	2,126.8	4.34	-3.75	2.19
8,594.0	87.90	359.20	6,587.1	2,157.5	66.3	2,157.8	7.87	-6.45	-4.52
8,627.0	89.60	0.90	6,587.8	2,190.5	66.3	2,190.8	7.28	5.15	5.15
8,658.0	90.70	359.90	6,587.7	2,221.5	66.6	2,221.8	4.80	3.55	-3.23
8,691.0	89.00	357.90	6,587.8	2,254.5	65.9	2,254.8	7.95	-5.15	-6.06
8,723.0	90.10	359.70	6,588.0	2,286.5	65.3	2,286.7	6.59	3.44	5.63
8,755.0	89.00	357.90	6,588.3	2,318.5	64.6	2,318.7	6.59	-3.44	-5.63
8,787.0	90.30	359.80	6,588.5	2,350.5	63.9	2,350.7	7.19	4.06	5.94
8,818.0	89.50	0.00	6,588.5	2,381.5	63.9	2,381.7	2.66	-2.58	0.65
8,850.0	89.10	0.00	6,588.9	2,413.5	63.9	2,413.7	1.25	-1.25	0.00
8,882.0	89.50	1.20	6,589.3	2,445.5	64.2	2,445.7	3.95	1.25	3.75
8,913.0	89.60	3.20	6,589.6	2,476.5	65.4	2,476.7	6.46	0.32	6.45
8,946.0	89.90	3.60	6,589.7	2,509.4	67.4	2,509.6	1.52	0.91	1.21
8,978.0	89.70	4.30	6,589.8	2,541.3	69.6	2,541.6	2.28	-0.63	2.19
9,010.0	89.10	5.00	6,590.2	2,573.2	72.2	2,573.5	2.88	-1.88	2.19
9,042.0	89.90	5.90	6,590.4	2,605.1	75.2	2,605.3	3.76	2.50	2.81
9,074.0	89.70	6.00	6,590.5	2,636.9	78.5	2,637.2	0.70	-0.63	0.31
9,104.0	89.50	5.70	6,590.8	2,666.7	81.6	2,667.0	1.20	-0.67	-1.00
9,136.0	89.60	5.50	6,591.0	2,698.6	84.7	2,698.9	0.70	0.31	-0.63
9,168.0	89.80	3.60	6,591.2	2,730.5	87.2	2,730.8	5.97	0.63	-5.94
9,200.0	88.80	2.20	6,591.6	2,762.4	88.9	2,762.8	5.38	-3.13	-4.38
9,232.0	88.50	0.30	6,592.3	2,794.4	89.6	2,794.7	6.01	-0.94	-5.94
9,264.0	87.70	357.10	6,593.4	2,826.4	88.8	2,826.7	10.30	-2.50	-10.00
9,296.0	88.80	357.40	6,594.4	2,858.3	87.3	2,858.7	3.56	3.44	0.94
9,329.0	90.20	358.10	6,594.6	2,891.3	86.0	2,891.6	4.74	4.24	2.12
9,361.0	91.00	358.28	6,594.3	2,923.3	85.0	2,923.6	2.56	2.50	0.56
9,393.0	89.90	358.20	6,594.1	2,955.3	84.0	2,955.6	3.45	-3.44	-0.25
9,425.0	90.10	356.80	6,594.1	2,987.2	82.6	2,987.5	4.42	0.63	-4.38
9,456.0	90.80	356.60	6,593.8	3,018.2	80.8	3,018.5	2.35	2.26	-0.65

Company:	PETROLEUM DEVELOPMENT CORP Weld County CO	Local Co-ordinate Reference:	Well Wilson 34-34H
Project:	SEC.34-T7N-R63W	TVD Reference:	WELL @ 4729.0ft (RKB Ensign 32 - 15')
Site:	Wilson 34-34H Pad Sec.34-T7N-R63W	MD Reference:	WELL @ 4729.0ft (RKB Ensign 32 - 15')
Well:	Wilson 34-34H	North Reference:	True
Wellbore:	Wellbore #1	Survey Calculation Method:	Minimum Curvature
Design:	Wellbore #1	Database:	Landmark

Survey									
Measured Depth (ft)	Inclination (°)	Azimuth (°)	Vertical Depth (ft)	+N/-S (ft)	+E/-W (ft)	Vertical Section (ft)	Dogleg Rate (°/100ft)	Build Rate (°/100ft)	Turn Rate (°/100ft)
9,488.0	91.40	356.90	6,593.2	3,050.1	79.0	3,050.4	2.10	1.88	0.94
9,521.0	91.40	355.70	6,592.4	3,083.1	76.9	3,083.3	3.64	0.00	-3.64
9,552.0	91.60	355.60	6,591.6	3,114.0	74.5	3,114.2	0.72	0.65	-0.32
9,584.0	92.70	356.80	6,590.4	3,145.9	72.4	3,146.1	5.09	3.44	3.75
9,616.0	92.10	356.80	6,589.0	3,177.8	70.6	3,178.0	1.88	-1.88	0.00
9,648.0	92.10	355.50	6,587.9	3,209.7	68.5	3,209.9	4.06	0.00	-4.06
9,681.0	91.40	355.70	6,586.9	3,242.6	66.0	3,242.8	2.21	-2.12	0.61
9,713.0	91.10	355.40	6,586.2	3,274.5	63.5	3,274.7	1.33	-0.94	-0.94
9,745.0	91.00	354.90	6,585.6	3,306.4	60.8	3,306.6	1.59	-0.31	-1.56
9,777.0	89.80	353.70	6,585.4	3,338.2	57.6	3,338.4	5.30	-3.75	-3.75
9,809.0	89.60	353.80	6,585.5	3,370.0	54.1	3,370.2	0.70	-0.63	0.31
9,841.0	89.30	354.10	6,585.8	3,401.8	50.7	3,402.0	1.33	-0.94	0.94
9,873.0	89.60	354.10	6,586.1	3,433.7	47.4	3,433.8	0.94	0.94	0.00
9,904.0	89.40	354.60	6,586.4	3,464.5	44.4	3,464.6	1.74	-0.65	1.61
9,937.0	88.90	354.30	6,586.9	3,497.3	41.2	3,497.5	1.77	-1.52	-0.91
9,969.0	88.20	353.60	6,587.7	3,529.2	37.8	3,529.3	3.09	-2.19	-2.19
10,000.0	89.20	354.70	6,588.4	3,560.0	34.7	3,560.1	4.79	3.23	3.55
10,032.0	89.50	354.20	6,588.8	3,591.8	31.6	3,591.9	1.82	0.94	-1.56
10,064.0	88.60	354.60	6,589.3	3,623.7	28.5	3,623.8	3.08	-2.81	1.25
10,097.0	89.10	355.40	6,590.0	3,656.5	25.6	3,656.6	2.86	1.52	2.42
10,129.0	89.10	355.70	6,590.5	3,688.4	23.1	3,688.5	0.94	0.00	0.94
10,160.0	89.50	355.50	6,590.8	3,719.3	20.7	3,719.4	1.44	1.29	-0.65
10,192.0	89.00	355.20	6,591.3	3,751.2	18.1	3,751.3	1.82	-1.56	-0.94
10,224.0	89.00	355.80	6,591.8	3,783.1	15.6	3,783.2	1.87	0.00	1.88
10,256.0	88.60	357.40	6,592.5	3,815.1	13.7	3,815.1	5.15	-1.25	5.00
10,288.0	89.00	357.80	6,593.2	3,847.0	12.4	3,847.1	1.77	1.25	1.25
10,321.0	89.30	357.80	6,593.6	3,880.0	11.1	3,880.0	0.91	0.91	0.00
10,353.0	89.70	357.50	6,593.9	3,912.0	9.8	3,912.0	1.56	1.25	-0.94
10,385.0	89.80	359.50	6,594.1	3,944.0	9.0	3,944.0	6.26	0.31	6.25
10,416.0	89.90	2.20	6,594.2	3,975.0	9.4	3,975.0	8.72	0.32	8.71
10,448.0	90.00	2.90	6,594.2	4,006.9	10.8	4,006.9	2.21	0.31	2.19
10,480.0	89.80	1.10	6,594.2	4,038.9	12.0	4,038.9	5.66	-0.63	-5.63
10,511.0	89.40	0.70	6,594.5	4,069.9	12.4	4,069.9	1.82	-1.29	-1.29
10,543.0	89.10	1.10	6,594.9	4,101.9	12.9	4,101.9	1.56	-0.94	1.25
10,573.0	89.20	1.20	6,595.3	4,131.9	13.6	4,131.9	0.47	0.33	0.33
10,606.0	88.70	0.90	6,595.9	4,164.9	14.2	4,164.9	1.77	-1.52	-0.91
10,637.0	88.70	0.70	6,596.6	4,195.9	14.6	4,195.9	0.64	0.00	-0.65
10,669.0	89.30	1.10	6,597.2	4,227.9	15.1	4,227.9	2.25	1.88	1.25
10,701.0	89.60	1.10	6,597.5	4,259.8	15.7	4,259.9	0.94	0.94	0.00
10,733.0	89.40	0.40	6,597.8	4,291.8	16.1	4,291.9	2.27	-0.63	-2.19
10,764.0	89.60	0.00	6,598.0	4,322.8	16.2	4,322.9	1.44	0.65	-1.29
10,796.0	89.10	0.80	6,598.4	4,354.8	16.5	4,354.9	2.95	-1.56	2.50
10,828.0	89.40	0.60	6,598.8	4,386.8	16.8	4,386.9	1.13	0.94	-0.63
10,860.0	89.10	0.10	6,599.2	4,418.8	17.0	4,418.9	1.82	-0.94	-1.56
10,890.0	89.40	0.00	6,599.6	4,448.8	17.1	4,448.9	1.05	1.00	-0.33
10,913.0	89.10	0.20	6,599.9	4,471.8	17.1	4,471.9	1.57	-1.30	0.87
10,947.4	89.10	0.20	6,600.5	4,506.2	17.2	4,506.2	0.00	0.00	0.00
TARGET BHL 500'FNL, 1320'FEL									
10,958.0	89.10	0.20	6,600.6	4,516.8	17.3	4,516.9	0.00	0.00	0.00
Proj @ Bit									

Company:	PETROLEUM DEVELOPMENT CORP Weld County CO	Local Co-ordinate Reference:	Well Wilson 34-34H
Project:	SEC.34-T7N-R63W	TVD Reference:	WELL @ 4729.0ft (RKB Ensign 32 - 15')
Site:	Wilson 34-34H Pad Sec.34-T7N-R63W	MD Reference:	WELL @ 4729.0ft (RKB Ensign 32 - 15')
Well:	Wilson 34-34H	North Reference:	True
Wellbore:	Wellbore #1	Survey Calculation Method:	Minimum Curvature
Design:	Wellbore #1	Database:	Landmark

Survey Annotations				
Measured Depth (ft)	Vertical Depth (ft)	Local Coordinates		Comment
+N/-S (ft)	+E/-W (ft)			
10,958.0	6,600.6	4,516.8	17.3	Proj @ Bit

Checked By: _____	Approved By: _____	Date: _____
-------------------	--------------------	-------------