



Copyright © 2011 by Canrig Drilling Technology, Ltd.

Houston, TX
(281) 784-5500
Bakersfield, CA
(661) 328-1595
New Iberia, LA
(337) 364-2322
Anchorage, AK
(907) 561-2465

Mudlog TVD

COMPANY	EXXONMOBIL
WELL	PCU 296-6B8
FIELD	PICEANCE CREEK
REGION	ROCKIES
COORDINATES	LAT: 39.905338000 LONG: 108.205109000
ELEVATION	GL = 7361.2' KB = 7388.2'
COUNTY, STATE	RIO BLANCO, COLORADO
API INDEX	051031153400
SPUD DATE	AUGUST 10, 2011
CONTRACTOR	HELMERICH AND PAYNE
CO. REP.	JOHN WOOD
RIG/TYPE	HP215/FLEX 3
LOGGING UNIT	051
GEOLOGISTS	B. DELANEY B. JOHANNING
ADD. PERSONS	G. BAKER D. CLAAR
CO. GEOLOGIST	W. HOFFMAN

LOG INTERVAL

DEPTHS: 145' **TO** 4,526'
DATES: 08/10/2011 **TO** 08/20/2011
SCALE: 5" = 100'

CASING DATA

10.75" **AT** 4511'
AT
AT
AT

MUD TYPES

SPUD MUD **TO** 4526'
TO
TO
TO

HOLE SIZE

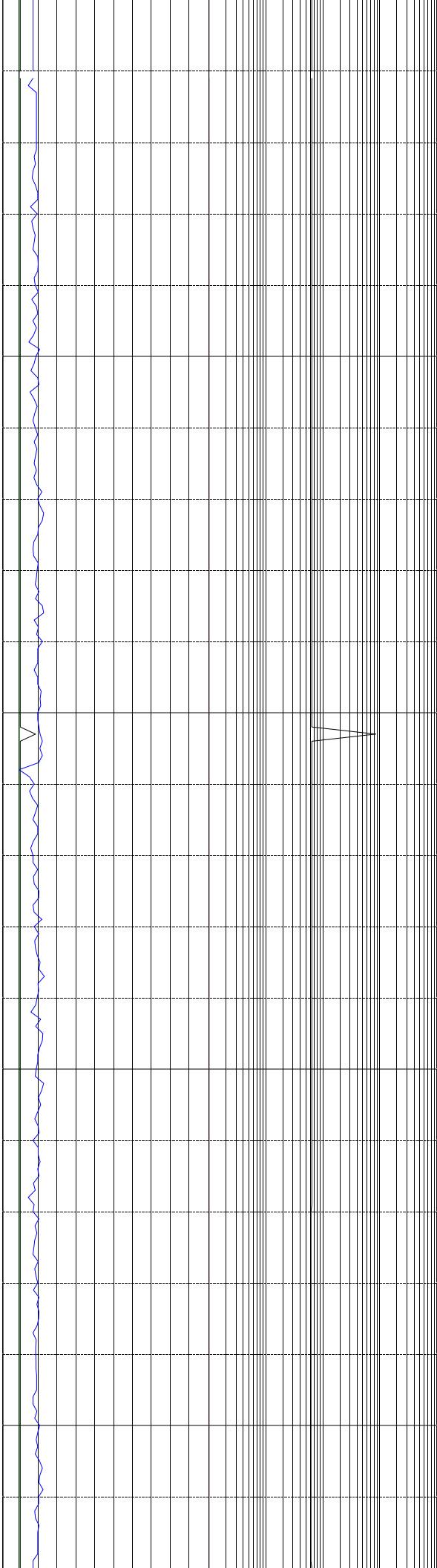
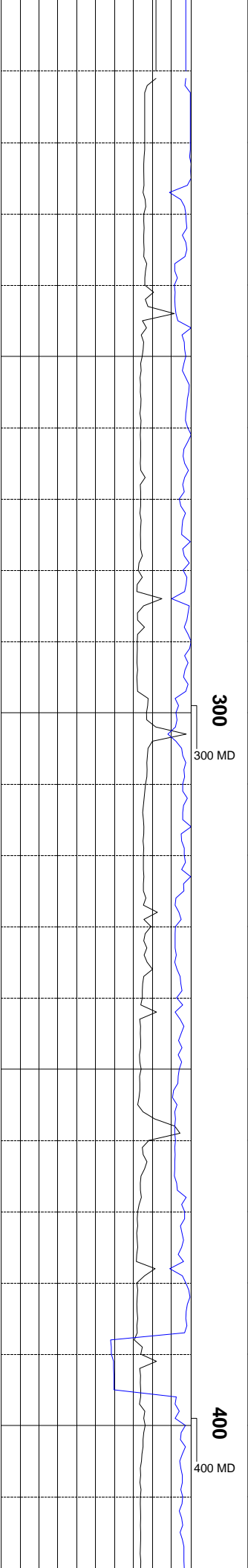
14.75" **TO** 4526'
TO
TO
TO

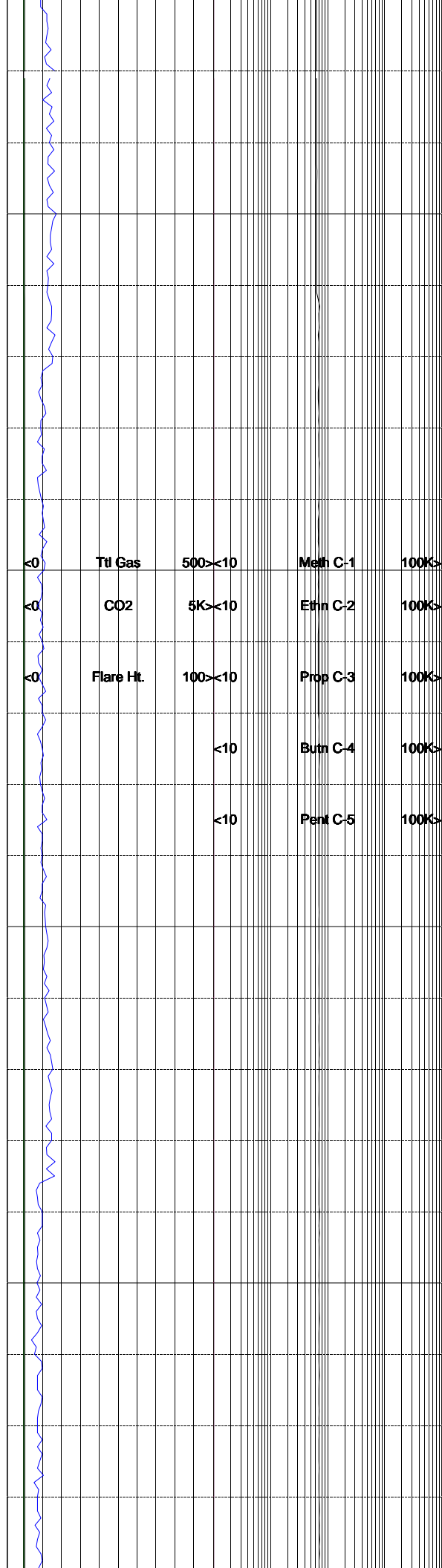
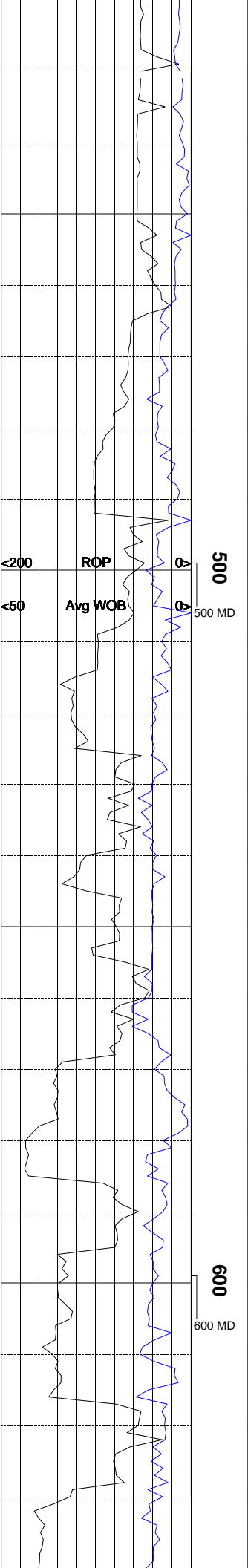
ABBREVIATIONS

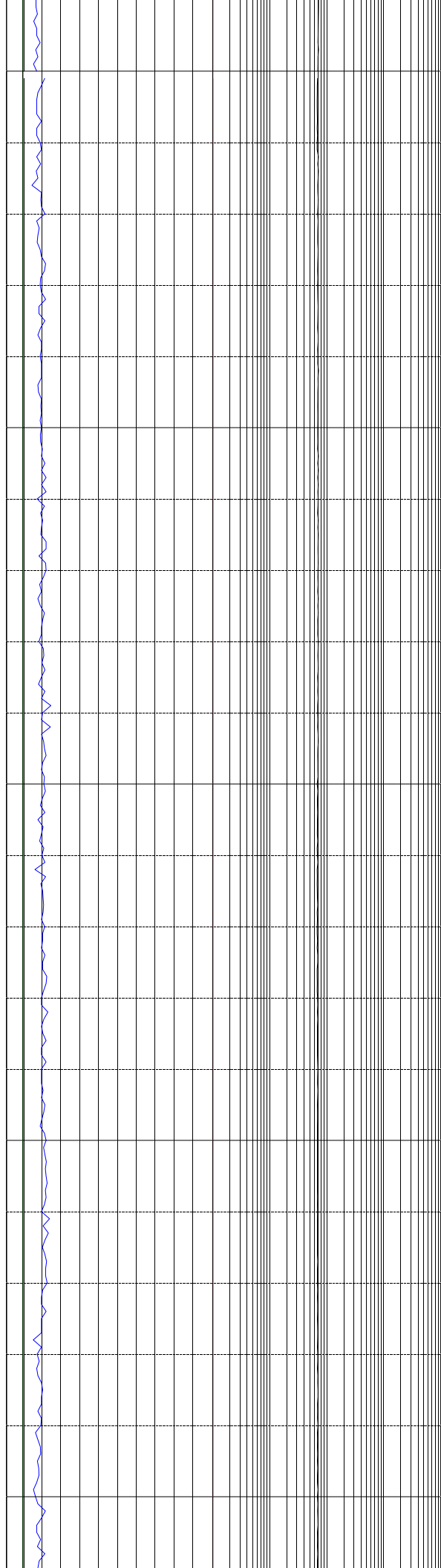
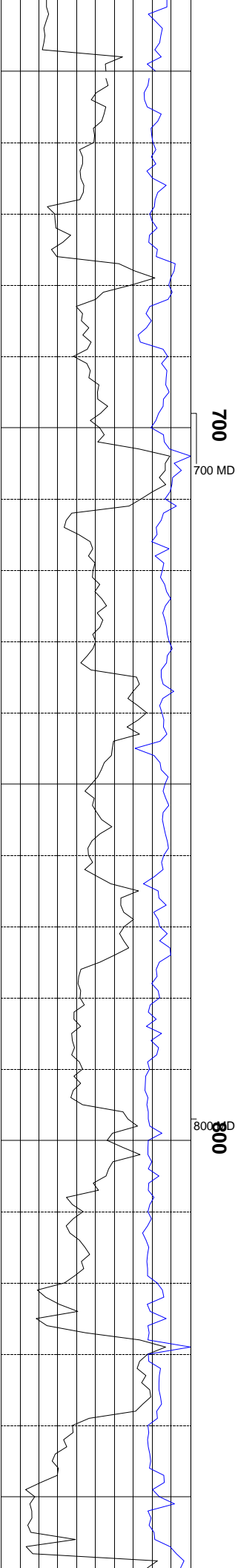
<i>NB</i> NEWBIT	<i>PV</i> PLASTIC VISCOSITY	<i>LC</i> LOST CIRCULATION
<i>RRB</i> RERUN BIT	<i>YP</i> YIELD POINT	<i>CO</i> CIRCULATE OUT
<i>CB</i> CORE BIT	<i>FL</i> FLUID LOSS	<i>NR</i> NO RETURNS
<i>WOB</i> WEIGHT ON BIT	<i>CL</i> PPM CLORIDE ION	<i>TG</i> TRIP GAS
<i>RPM</i> ROTARY REV/MIN	<i>Rm</i> MUD RESISTIVITY	<i>SG</i> SURVEY GAS
<i>PP</i> PUMP PRESSURE	<i>Rmf</i> FILTRATE RESISTIVITY	<i>WG</i> WIPER GAS
<i>SPM</i> STROKES/MIN	<i>PR</i> POOR RETURNS	<i>CG</i> CONNECTION GAS
<i>MW</i> MUD WEIGHT	<i>LAT</i> LOGGED AFTER TRIP	
<i>VIS</i> FUNNEL VISCOSITY	<i>LAS</i> LOGGED AFTER SURVEY	

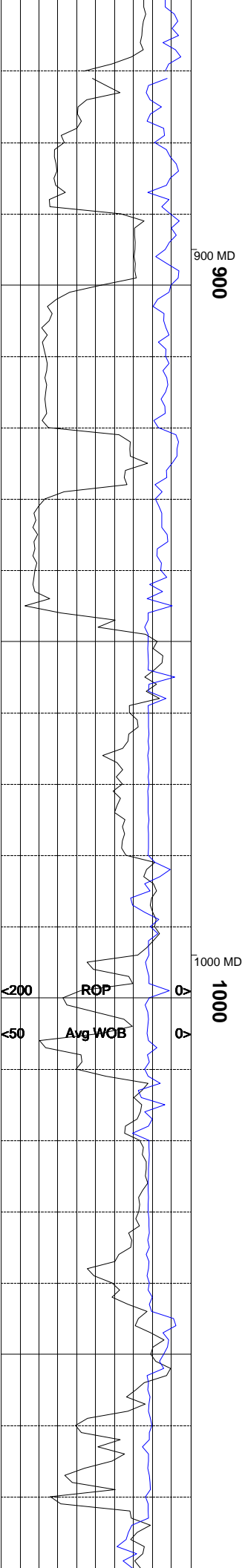
ALTERED ZONE	CHERT - GLASSY	FELSIC SILIC DIKE	MARL - CALC	SANDSTONE
ANDESITE	CHERT - PORCEL	FOSSIL	METAMORPHICS	SANDSTONE-TUFFACEOUS
ANHYDRITE	CHERT - TIGER STRIPE	GABBRO	MUDSTONE	SERICITIZATION
BASALT	CHERT - UNDIFF	GLASSY TUFF	OBSIDIAN	SERPENTINE
BENTONITE	CLAY	GRANITE	PALEOSOL	SHALE
BIOTITIZATION	CLAY-MUDSTONE	GRANITE WASH	PHOSPHATE	SHALE TUFFACEOUS
BRECCIA	CLYST-TUFFACEOUS	GRANODIORITE	PORCELANITE	SHELL FRAGMENTS
CALCARENITE	CHLORITIZATION	GYPSUM	PORCELANEOUS CLYST	SIDERITE
CALCAREOUS TUFF	COAL	HALITE	PYRITE	SILICIFICATION
CALCILUTITE	CONGLOMERATE	HORNBL-QTZ-DIO	PYROCLASTICS	SILTSTONE
CARBONATES	CONGL. SAND	IGNEOUS (ACIDIC)	QUARTZ DIORITE	SILTST-TUFFACEOUS
CARBONACEOUS MAT	CONGL. SANDSTONE	IGNEOUS (BASIC)	QUARTZ LATITE	TUFF
CARBONACEOUS SH	COQUINA	INTRUSIVES	QUARTZ MONZONITE	VOLCANICLASTICS SEDS
CEMENT CONTAM.	DACITE	KAOLINITIC	RECRYSTALLIZED CALCITE	VOLCANICS
CHALK	DIATOMITE	LIMESTONE	RHYOLITE	
CRYSTALLINE TUFF	DIORITE	LITHIC TUFF	SALT	
CHERT - ARGILL	DOLOSTONE	MARL - DOLO	SAND	

<200ROP0>			TVD Depth	Lithology	MGS	<0Ttl Gas100>			<10Meth C-1100K>			Interp. Lith	Remarks Survey Data, Mud Reports, Other Info.			
ft/hr						units			ppm					Ethn C-2100K>		
Avg WOB						CO2			Prop C-3100K>					Butn C-4100K>		
klbs						ppm			Pent C-5100K>							
						ft										
				</												

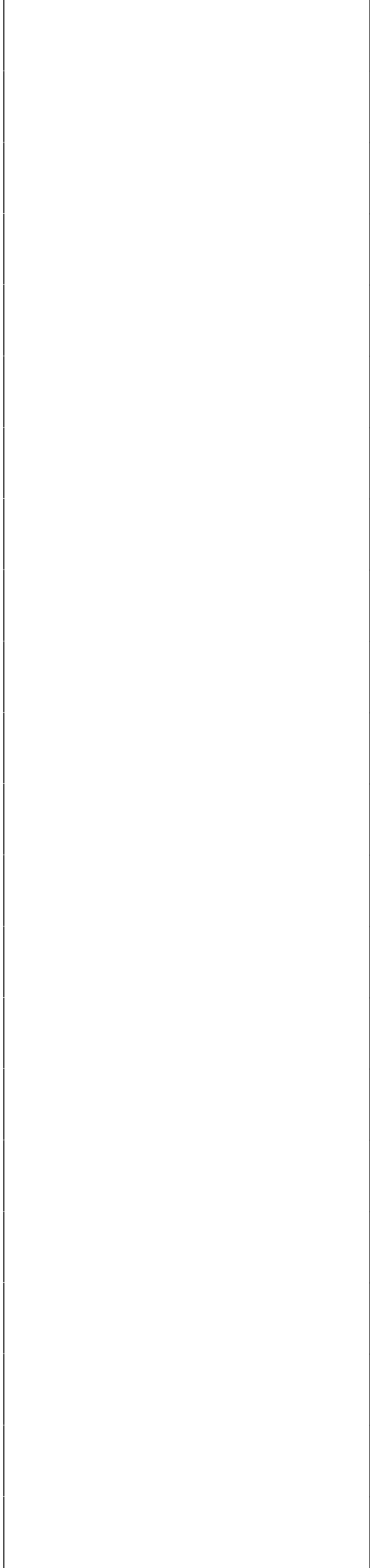
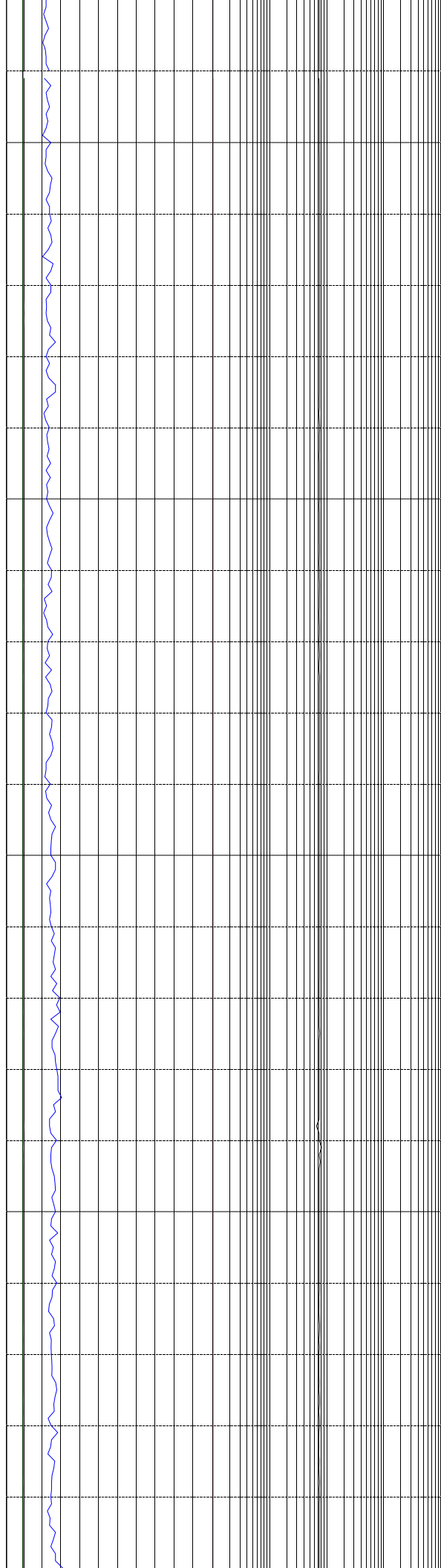
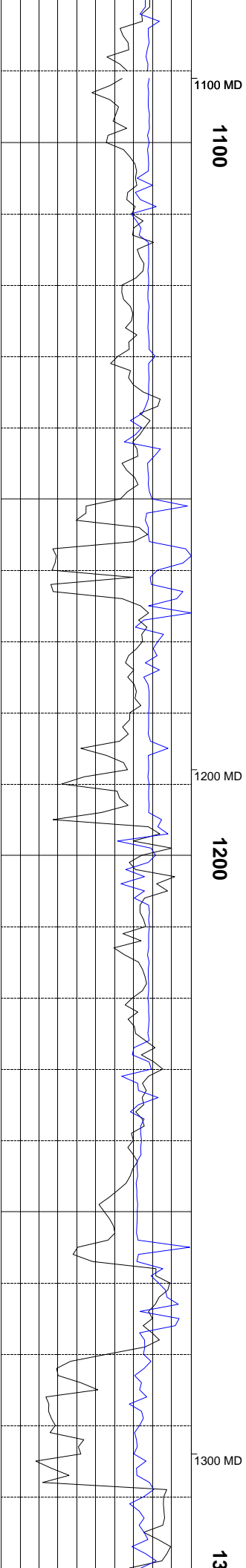


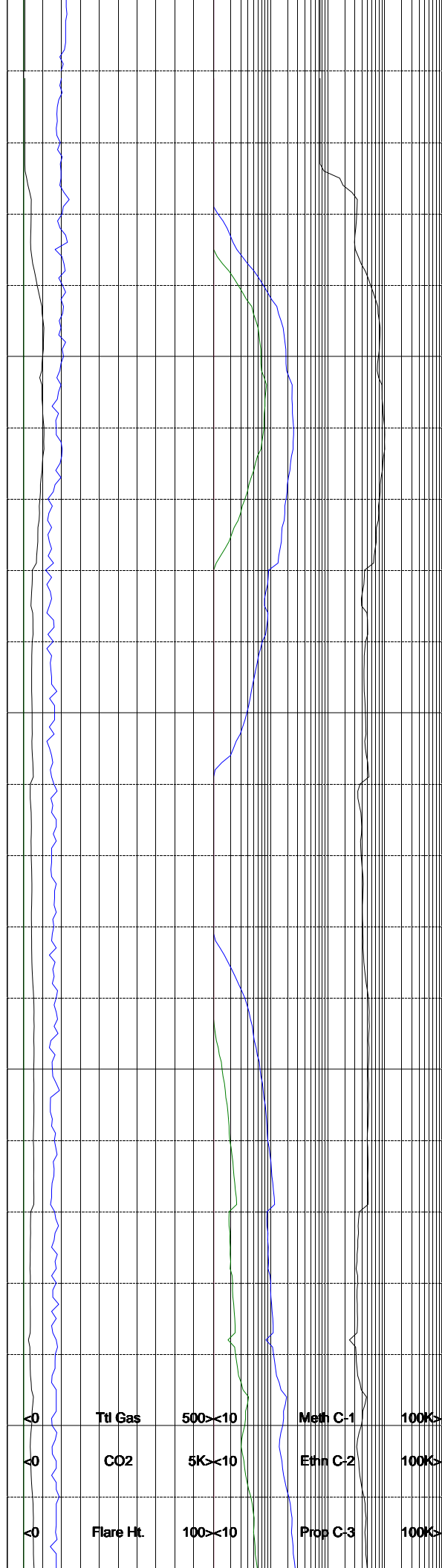
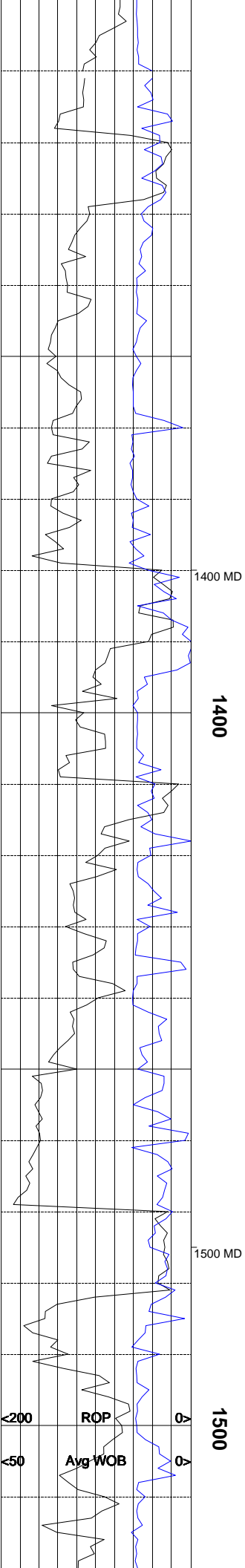


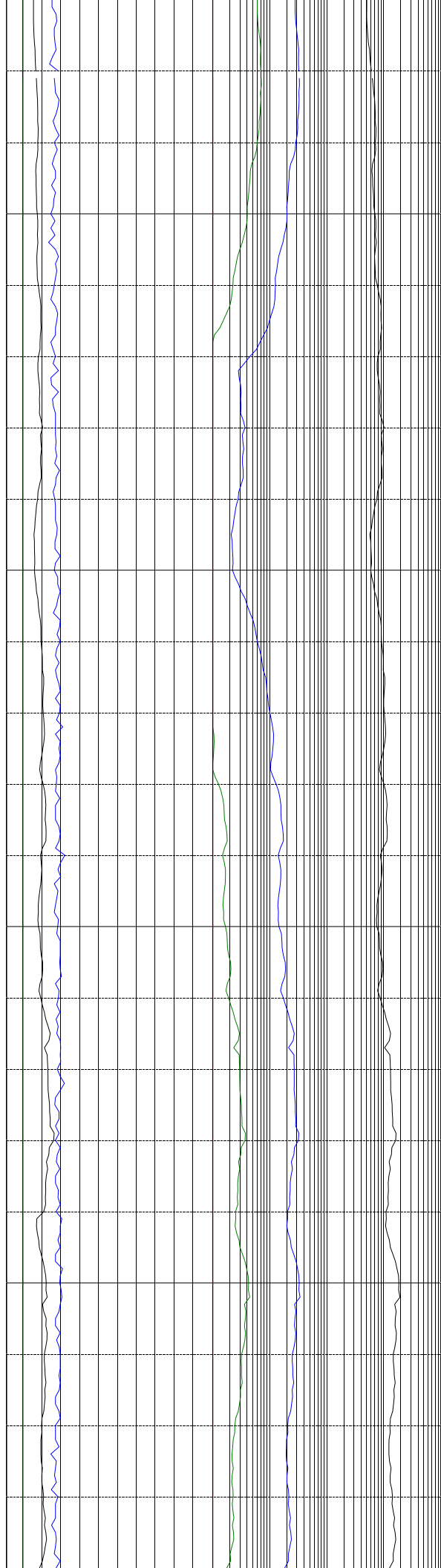
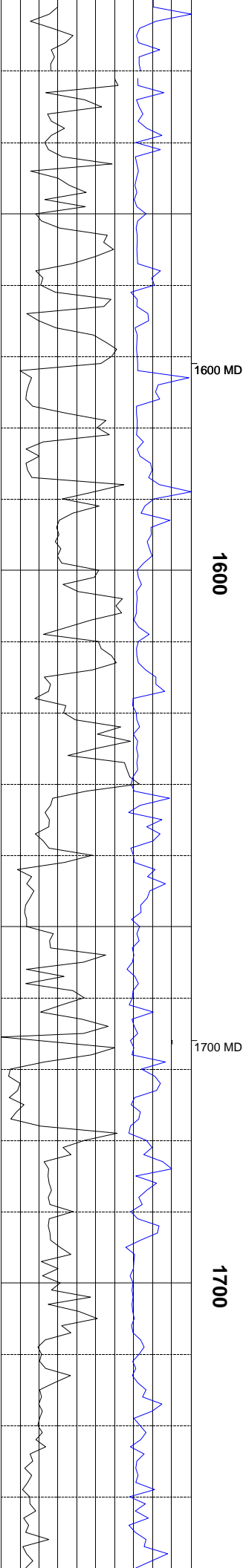


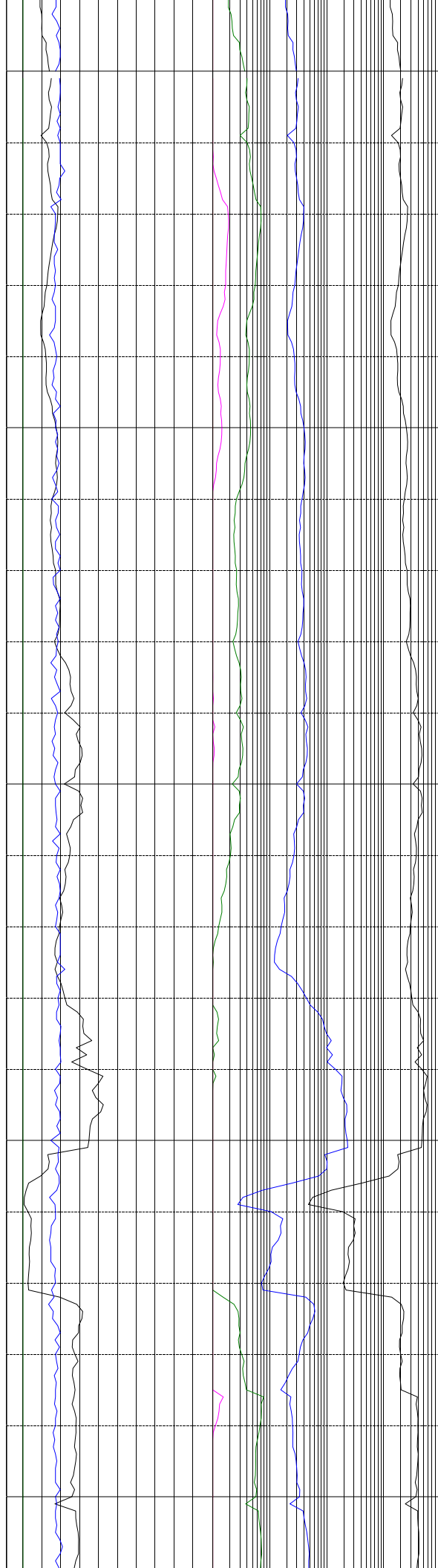
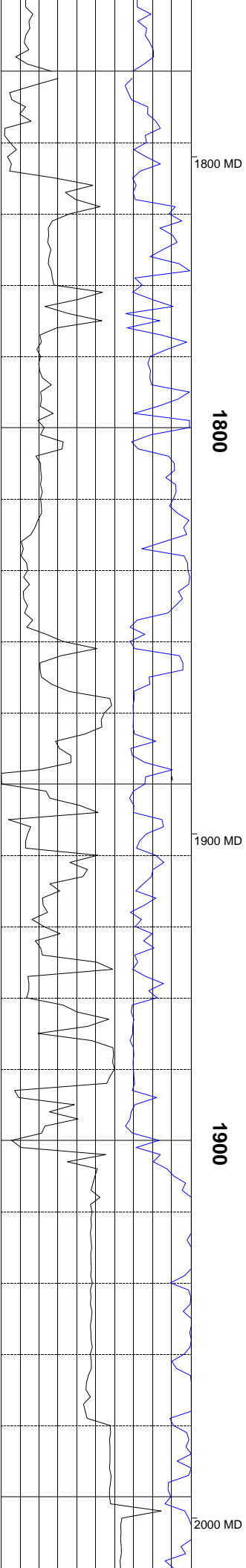


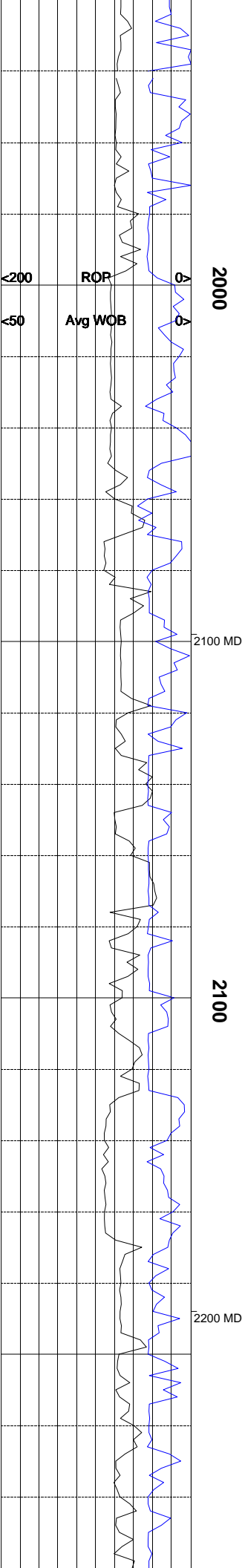
<0	Ttl Gas	500><10	Meth C-1	100K>
<0	CO2	5K><10	Ethin C-2	100K>
<0	Flare Ht.	100><10	Prop C-3	100K>
		<10	Butn C-4	100K>
		<10	Pent C-5	100K>

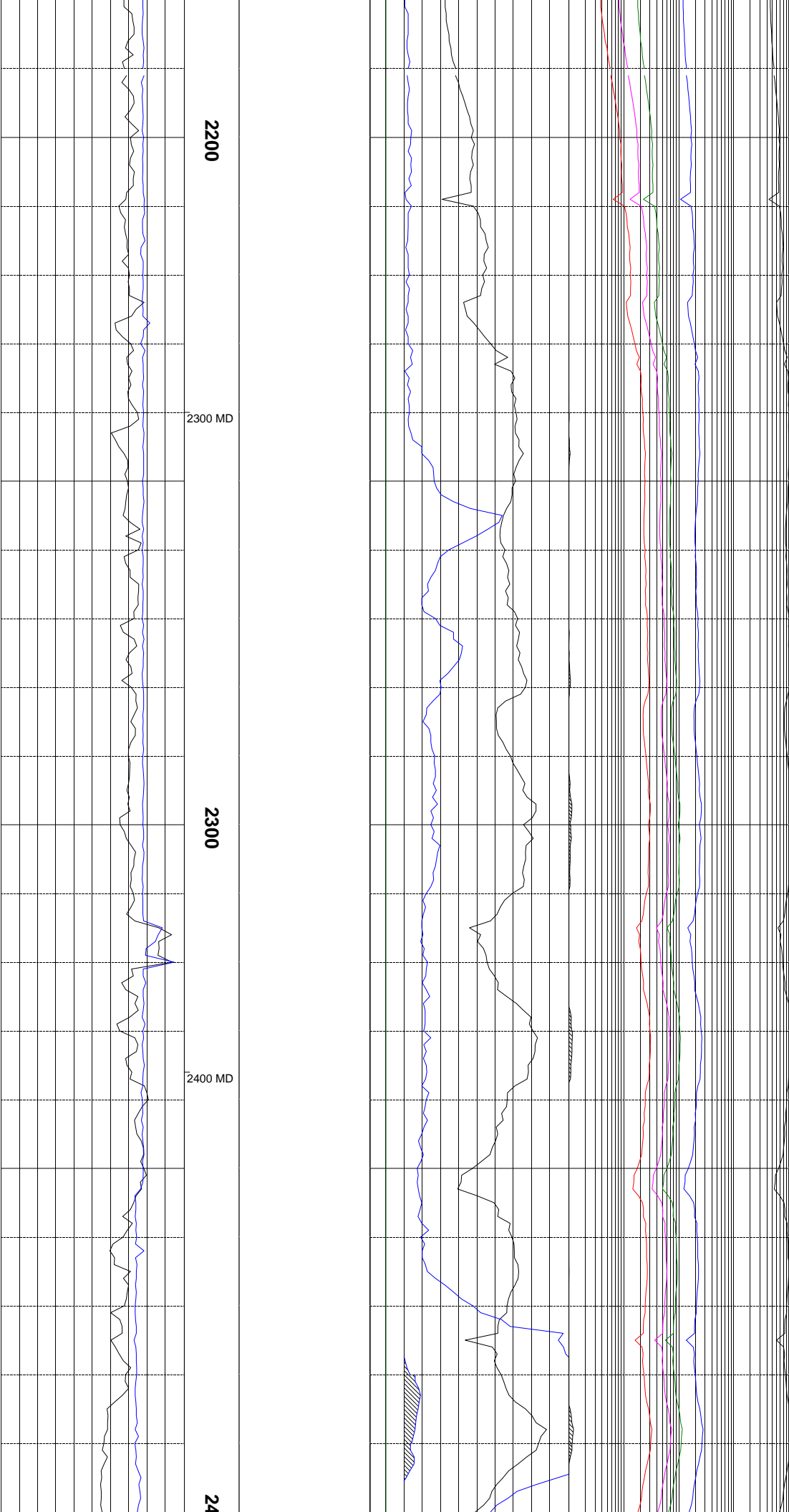












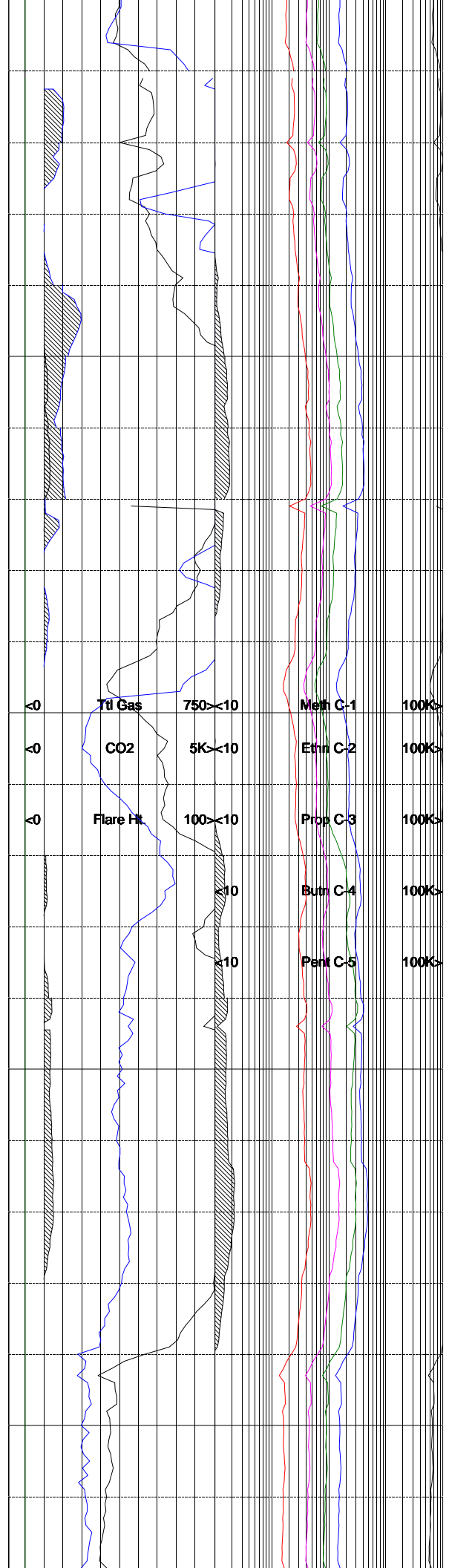
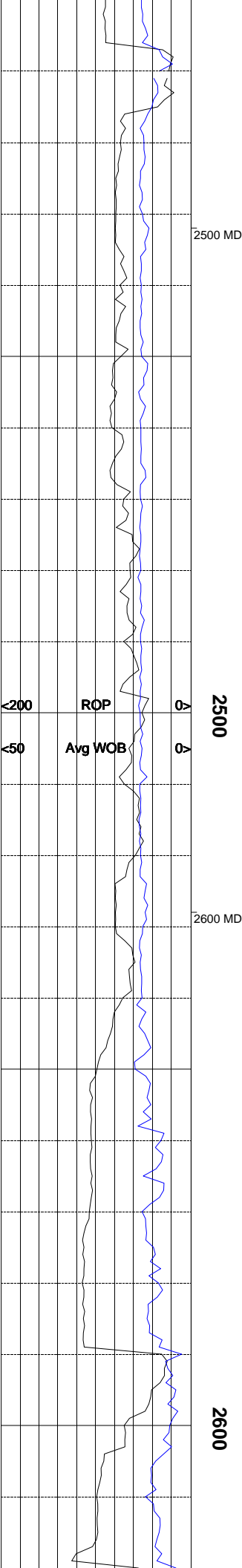
2200

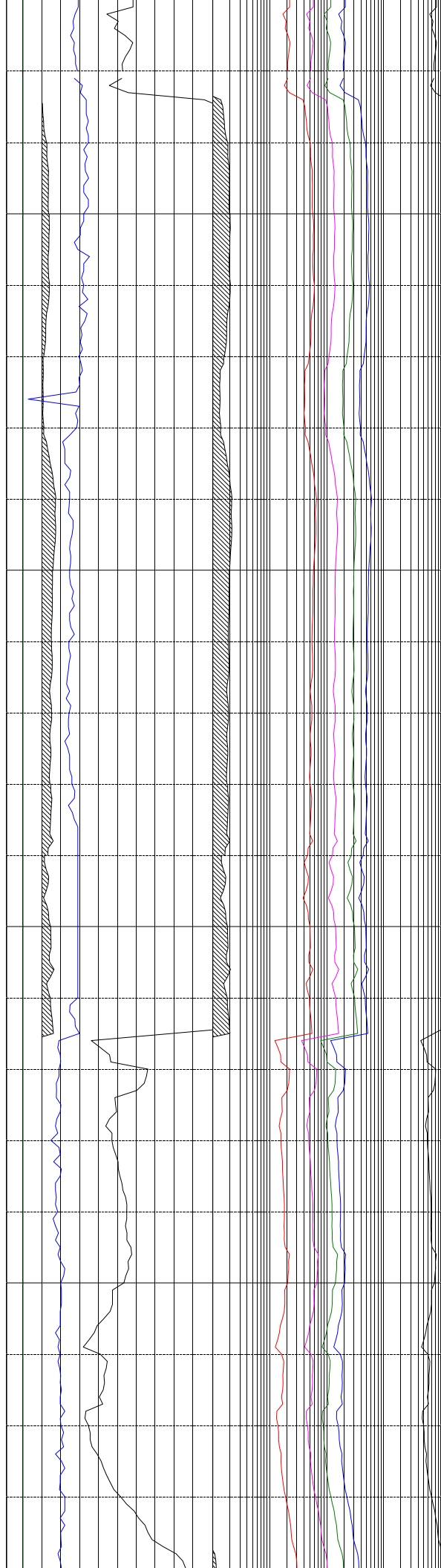
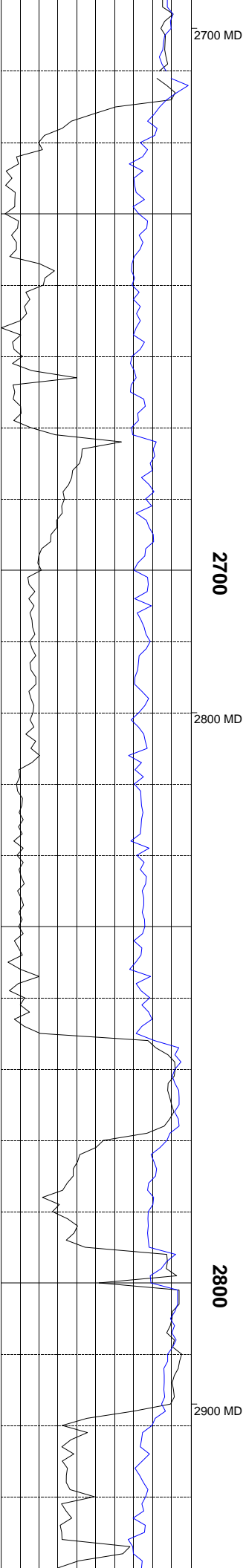
2300 MD

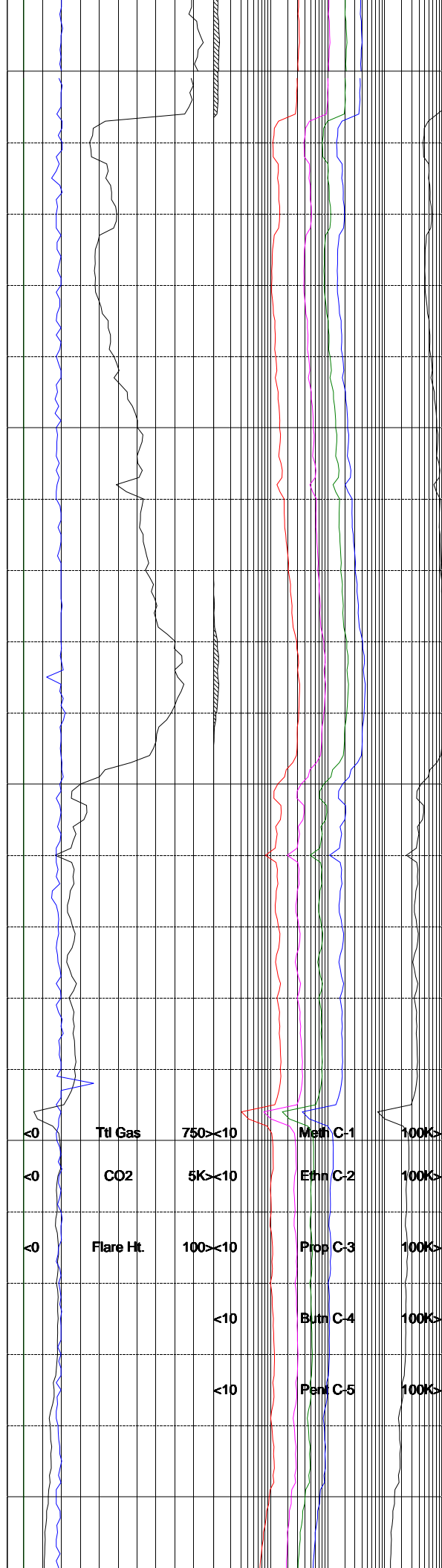
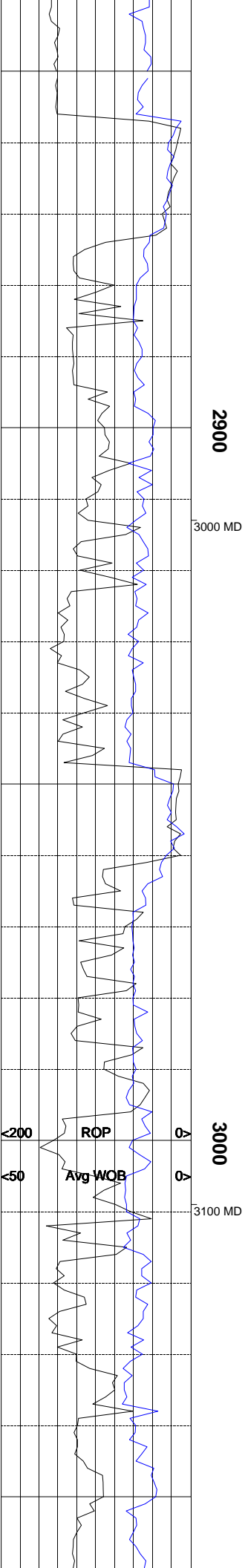
2300

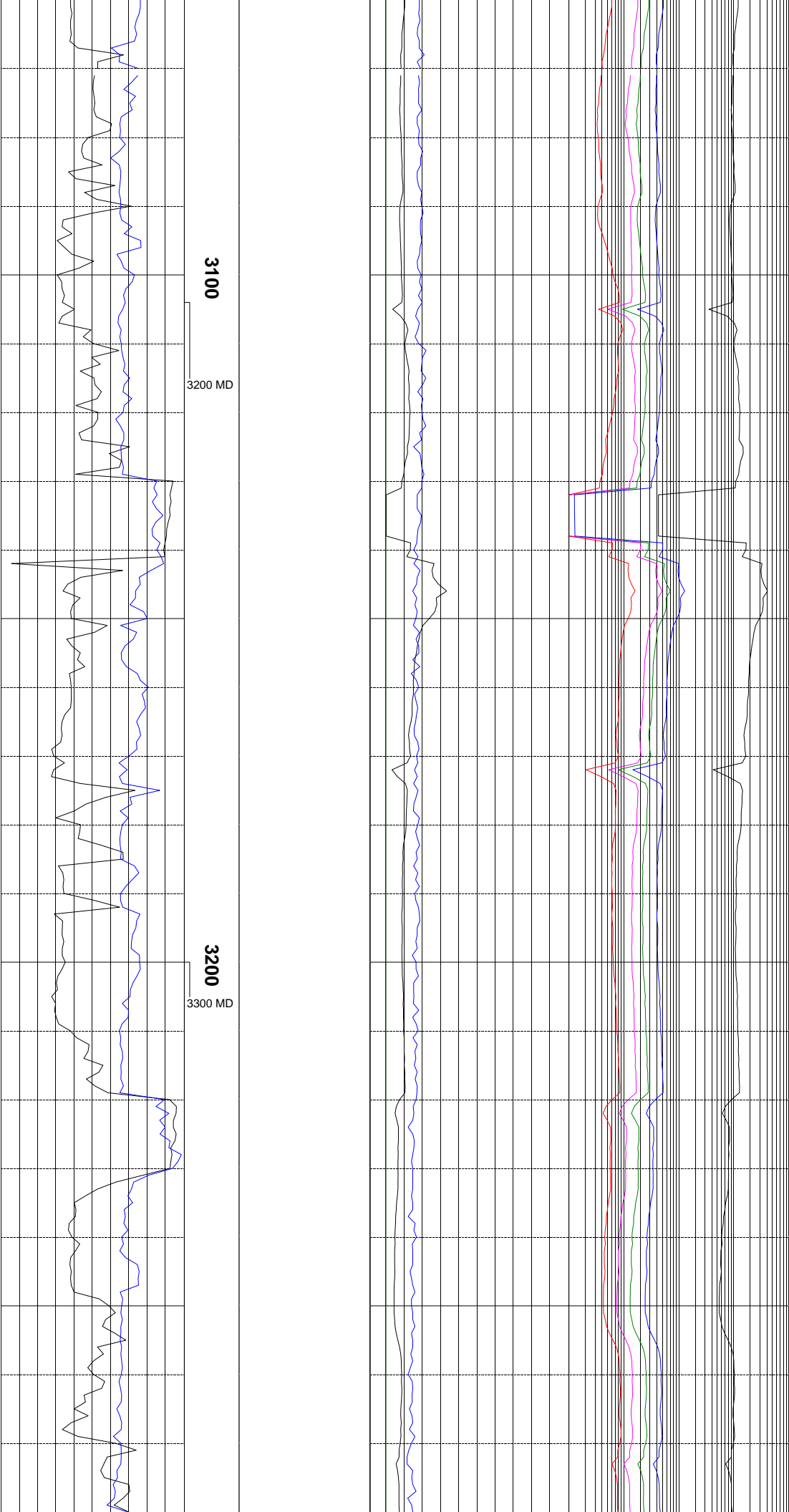
2400 MD

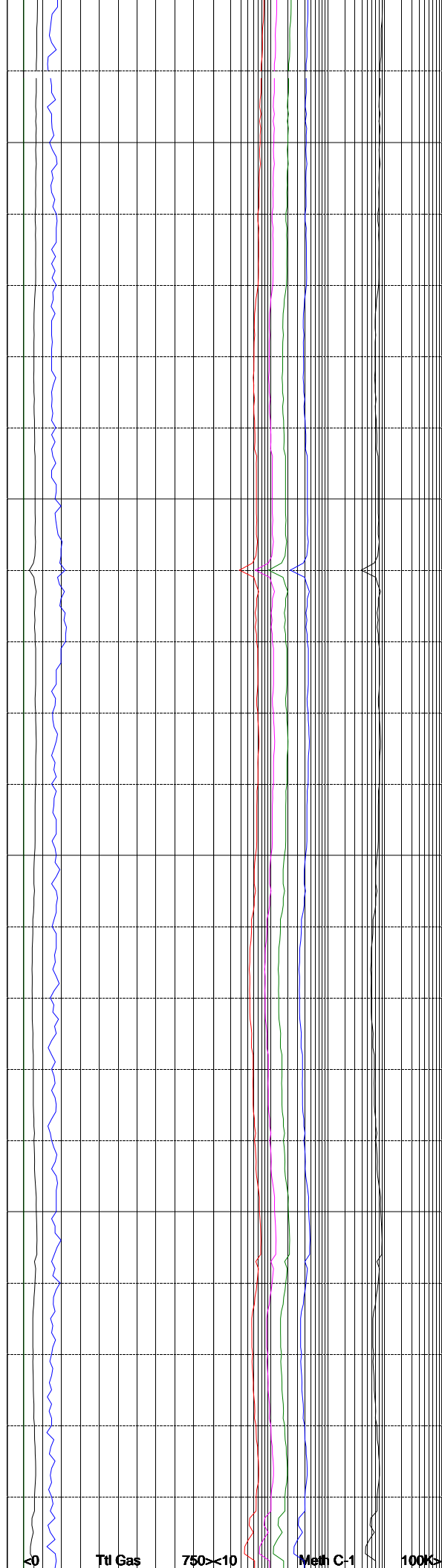
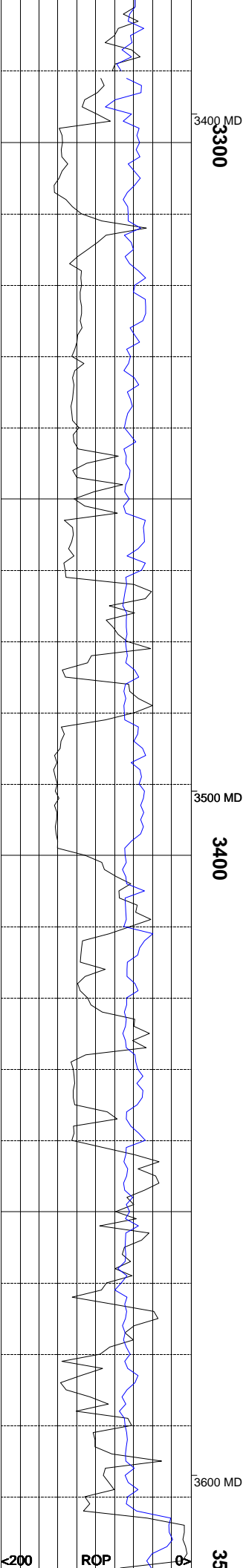
24

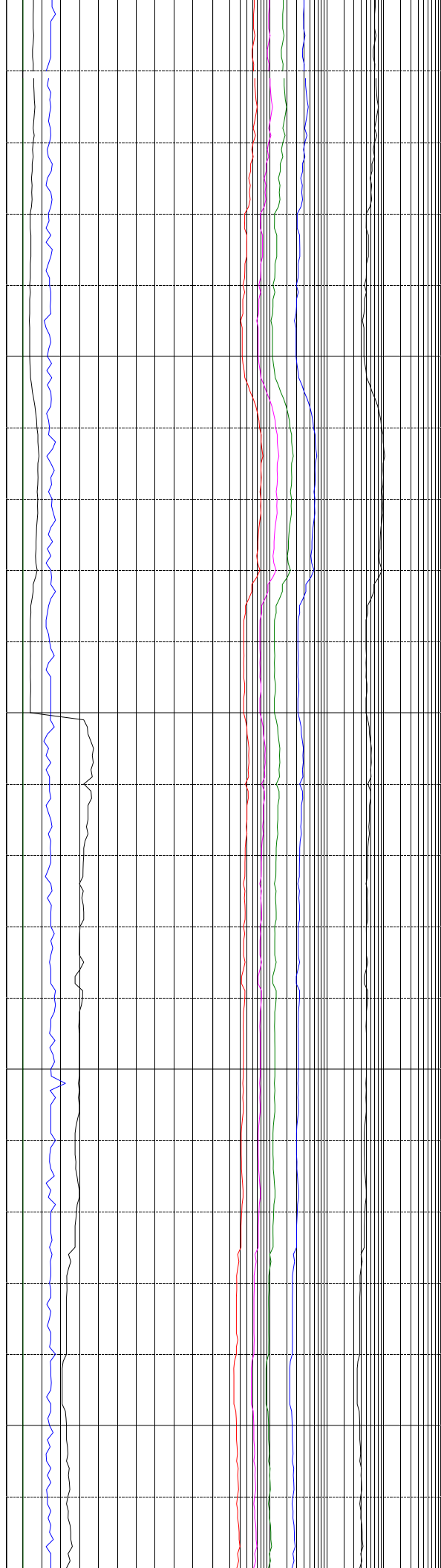
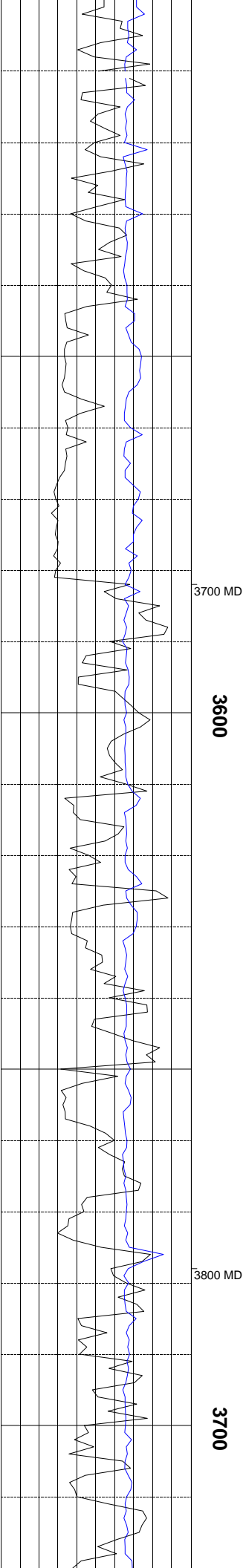


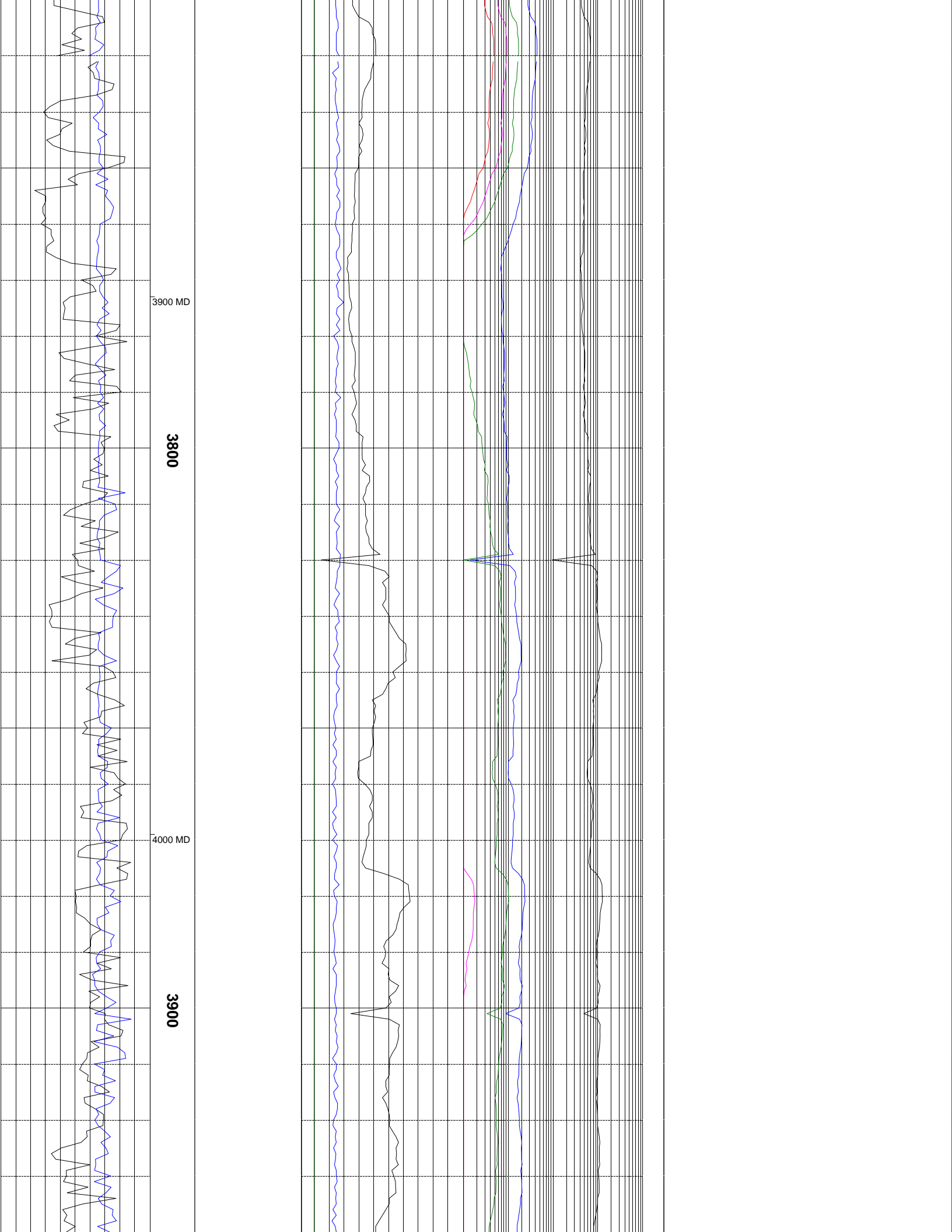


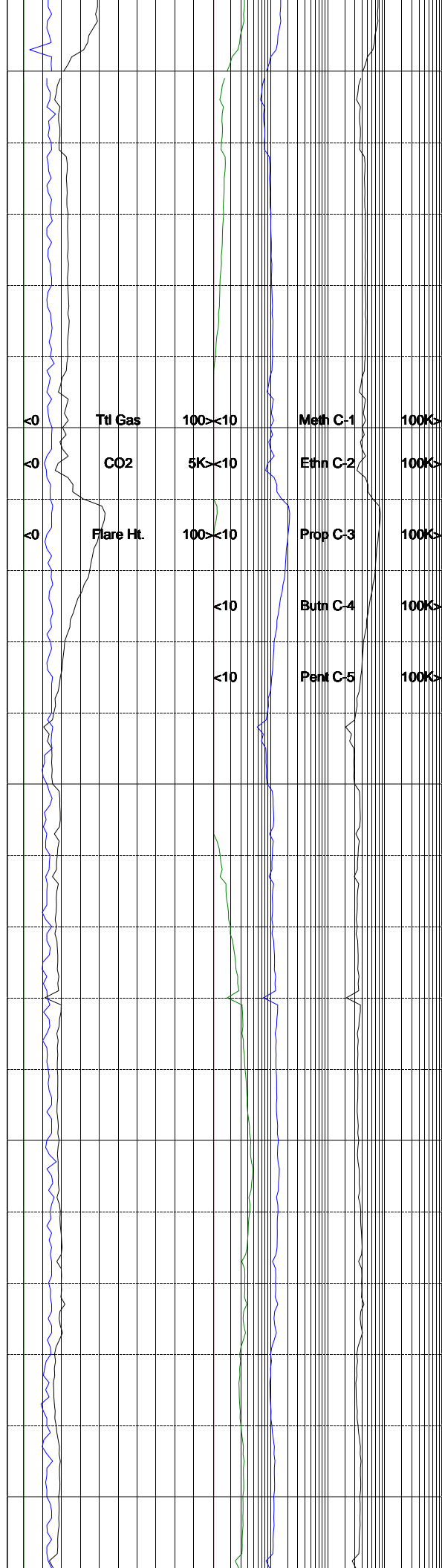
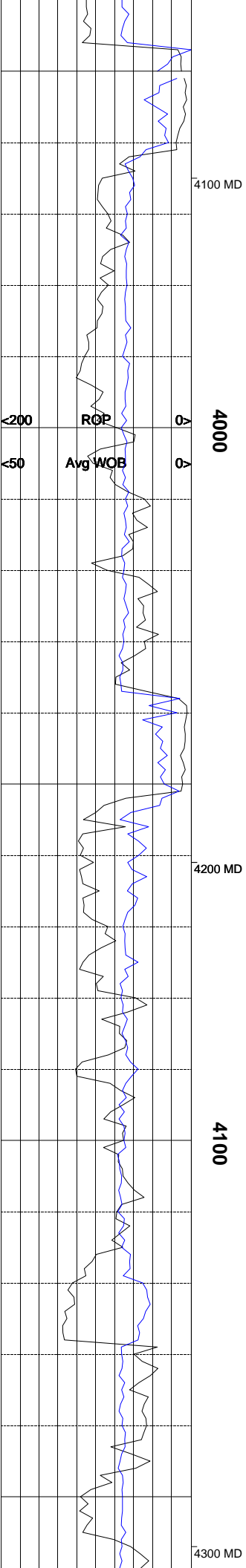


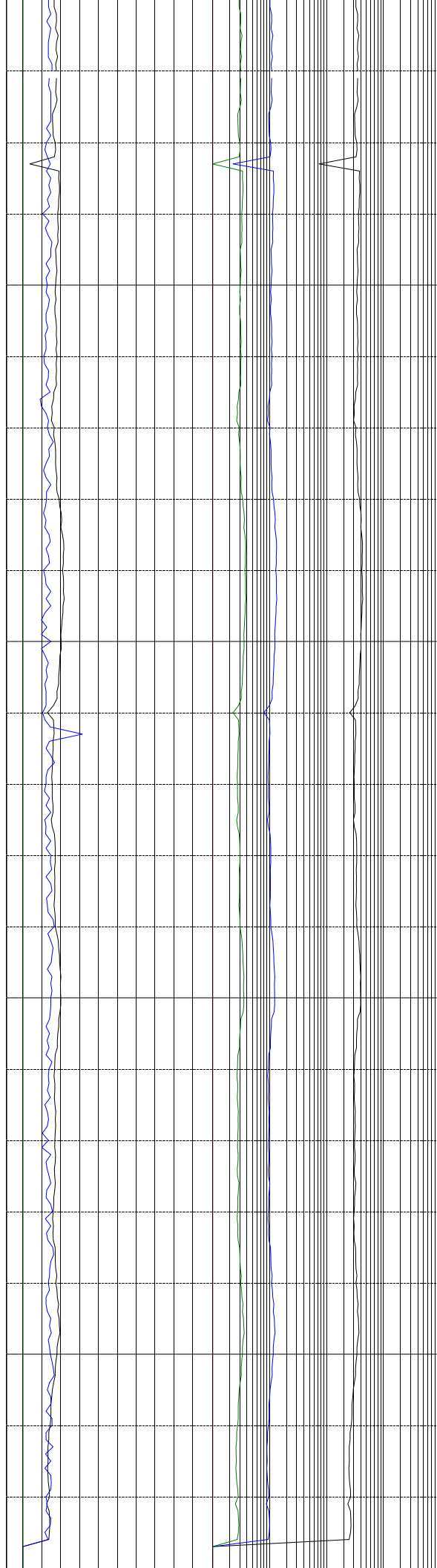
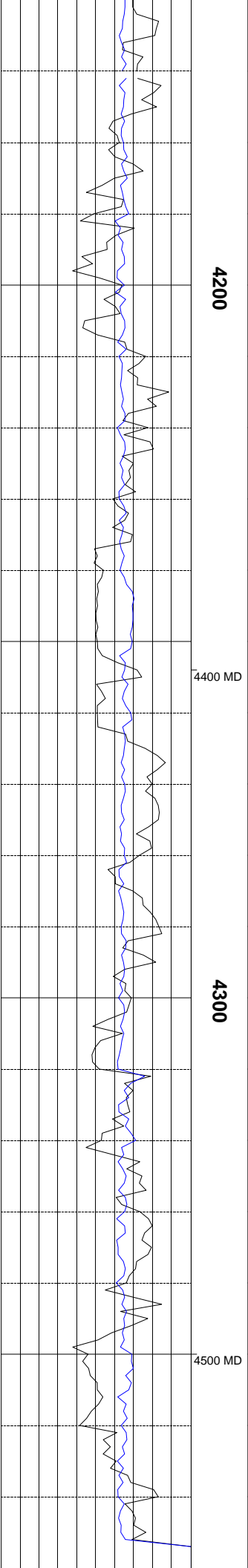












REACHED SURFACE CASING TD OF 4526' @

19:47 HRS ON 8/14/2011

AFTER 2 STAGE AND TOP JOB CEMENTING

OPS- THE PCU 296-6B8 WELL WAS ABANDONED.

