

Company		XTO Energy Inc.	
Well		Golden Eagle 30-08	
Field		Purgatorie River	
County		Las Animas	
State		Colorado	
Location:		API #: 05-071-09853-00 2132' FWL & 1060' FEL	
SEC 30 TWP 33S RGE 67W Permanent Datum GL Log Measured From G.L. Drilling Measured From G.L.		Elevation 7721' Other Services DEVI	
Date	7-23-11		
Run Number	one		
Depth Driller	2313'		
Depth Logger	1785'		
Bottom Logged Interval	1783'		
Top Log Interval	1500'		
Open Hole Size	7 7/8		
Type Fluid	water		
Density / Viscosity	///		
Max. Recorded Temp.	///		
Estimated Cement Top	///		
Time Well Ready	R.O.A		
Time Logger on Bottom	4:15 P.M.		
Equipment Number	T590		
Location	Trinidad		
Recorded By	C. Sisneros		
Witnessed By	Mr. Bill Blatnick		
Borehole Record		Tubing Record	
Run Number	Bit	From	To
Casing Record	Size	Wgt/Ft	Top
Surface String	8 5/8"		Bottom
Prot. String			1059'
Production String	5 1/5"		
Liner			TD

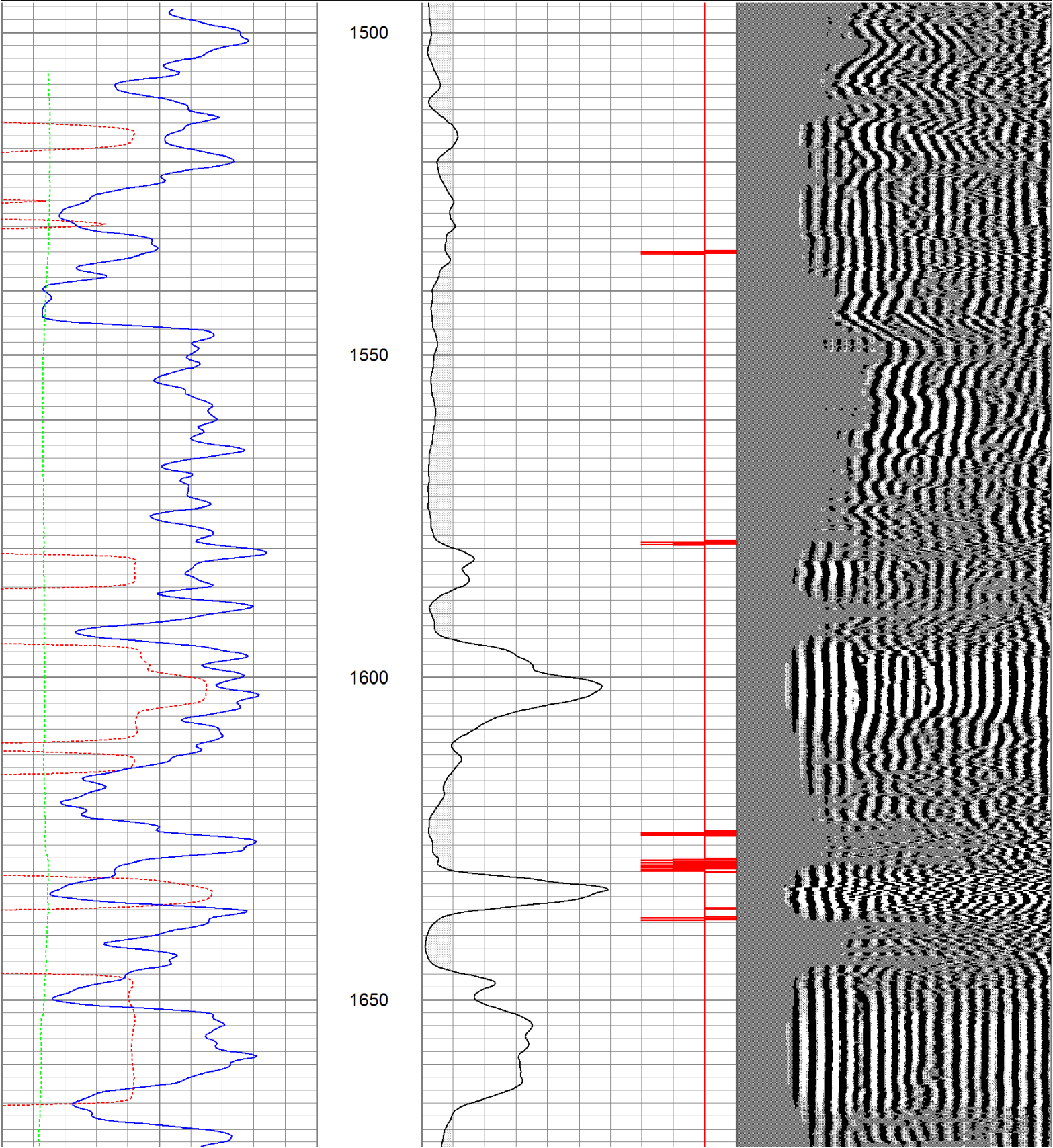
<<< Fold Here >>>

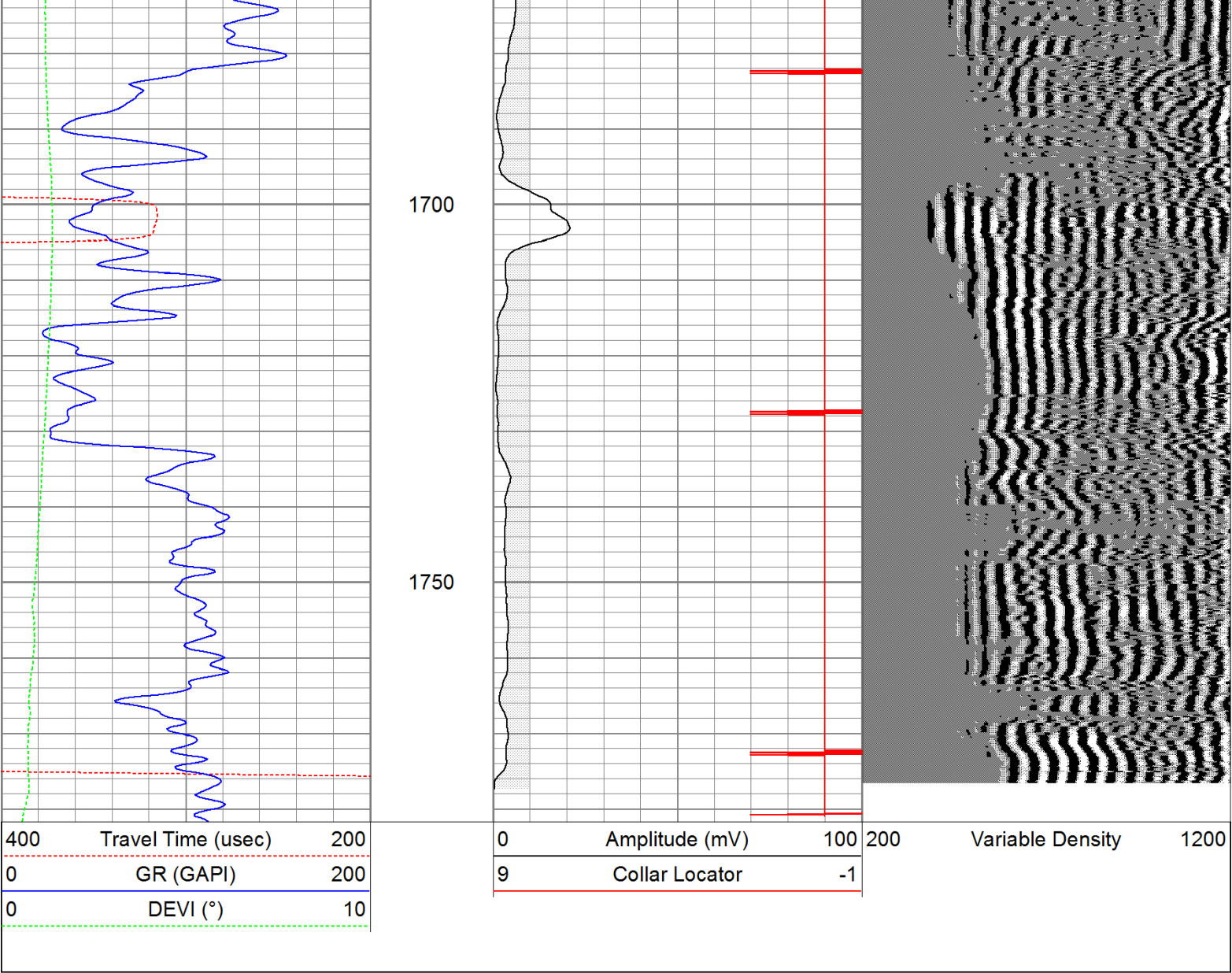
All interpretations are opinions based on inferences from electrical or other measurements and we cannot and do not guarantee the accuracy or correctness of any interpretation, and we shall not, except in the case of gross or willful negligence on our part, be liable or responsible for any loss, costs, damages, or expenses incurred or sustained by anyone resulting from any interpretation made by any of our officers, agents or employees. These interpretations are also subject to our general terms and conditions set out in our current Price Schedule.

Comments

Database File: ge30-08.db
Dataset Pathname: pass2
Presentation Format: cbldig
Dataset Creation: Sat Jul 23 16:15:00 2011 by Log Open-Cased 110302
Charted by: Depth in Feet scaled 1:240

400	Travel Time (usec)	200	0	Amplitude (mV)	100	200	Variable Density	1200
0	GR (GAPI)	200	9	Collar Locator	-1			
0	DEVI (°)	10						





Calibration Report					
Database File:	ge30-08.db				
Dataset Pathname:	pass2				
Dataset Creation:	Sat Jul 23 16:15:00 2011 by Log Open-Cased 110302				
Gamma Ray Calibration Report					
Serial Number:	080616				
Tool Model:	275D_INC				
Performed:	Wed May 04 17:31:09 2011				
Calibrator Value:	200.0	GAPI			
Background Reading:	50.0	cps			
Calibrator Reading:	250.0	cps			
Sensitivity:	1.0000	GAPI/cps			
Inclinometer Calibration Report					
Performed:	Wed May 04 17:39:54 2011				
	Low Read.	High Read.	Low Ref.	High Ref.	
X Accelerometer	-3585.20	3595.40	-1.00	1.00	gee

Y Accelerometer

-3619.40

3520.00

-1.00

1.00

gee

Z Accelerometer

Cement Bond Log Calibration Report

Serial Number: 081024
 Tool Model: PROBEDIGITALCBL
 Performed: Tue Jul 19 09:25:23 2011

Depth: 93.4615 ft
 Casing Diameter: 5.5 in

3' Spacing


5' Spacing

Signal Zero: 0 mV
 Calibrated Amplitude: 85 mV
 Reading at Signal Zero: -0.00874023 V
 Reading in Free Pipe: 1.72476 V

Gain: 49.0339
 Offset: 0.428567

50.83

0.467844

Sensor	Offset (ft)	Schematic	Description	Len (ft)	OD (in)	Wt (lb)	
			None	0.75	1.50	5.00	
			Star	0.29	1.50	0.50	
WVF3	9.04						
WVF5	8.04						
			CBL-PROBEDIGITALCBL (081024) PROBE DIGITAL CBL	8.75	2.75	106.50	
			Star	0.29	1.50	0.50	
CCL	3.50						
ACCX	1.83						
ACCY	1.83						
ACCZ	1.83						
GR	0.83						
			GR-275D_INC (080616) 2-3/4" GR-CCL with Inclination	4.50	2.75	50.00	
Dataset:			ge30-08.db: field/well/run1/pass2				
Total Length:			14.58 ft				
Total Weight:			162.50 lb				
O.D.			2.75 in				