



SUPERIOR
Hays,
Kansas

MICRO LOG

Company MULL DRILLING COMPANY, INC.
Well THOR UNIT #1-27
Field WILDCAT
County KIOWA
State COLORADO

Company MULL DRILLING COMPANY, INC.
Well THOR UNIT #1-27
Field WILDCAT
County KIOWA State COLORADO

Location: API # : 05-061-06841-0000
2636' FNL & 939' FEL
SEC 27 TWP 18S RGE 45W
Permanent Datum GROUND LEVEL Elevation 3913
Log Measured From KELLY BUSHING 13' A.G.L.
Drilling Measured From KELLY BUSHING
Other Services
CDL/CNL/PE
DIL/SON
Elevation
K.B. 3926
D.F. 3924
G.L. 3913

Date	4-30-10		
Run Number	TWO		
Depth Driller	4990		
Depth Logger	4990		
Bottom Logged Interval	4972		
Top Log Interval	3400		
Casing Driller	8 5/8" @ 315		
Casing Logger	314		
Bit Size	7 7/8		
Type Fluid in Hole	CHEMICAL MUD	CHLORIDES 3800 PPM	
Density / Viscosity	9.0/65		
pH / Fluid Loss	10.0/9.6		
Source of Sample	FLOWLINE		
Rm @ Meas. Temp	.65 @ 87F		
Rmf @ Meas. Temp	.48 @ 87F		
Rmc @ Meas. Temp	.76 @ 87F		
Source of Rmf / Rmc	MEASURED		
Rm @ BHT	.45 @ 125F		
Time Circulation Stopped	2 HOURS		
Time Logger on Bottom			
Maximum Recorded Temperature	125F		
Equipment Number	680		
Location	HAYS, KS.		
Recorded By	JASON CAPPELLUCCI		
Witnessed By	PHIL ASKEY		

<<< Fold Here >>>

All interpretations are opinions based on inferences from electrical or other measurements and we cannot and do not guarantee the accuracy or correctness of any interpretation, and we shall not, except in the case of gross or willful negligence on our part, be liable or responsible for any loss, costs, damages, or expenses incurred or sustained by anyone resulting from any interpretation made by any of our officers, agents or employees. These interpretations are also subject to our general terms and conditions set out in our current Price Schedule.

Comments

THANK YOU FOR USING SUPERIOR WELL SERVICE (785) 628-6395
DIRECTIONS
EAST EDGE OF BRANDON CO. - 1 1/2 N. - 1/2 W. INTO

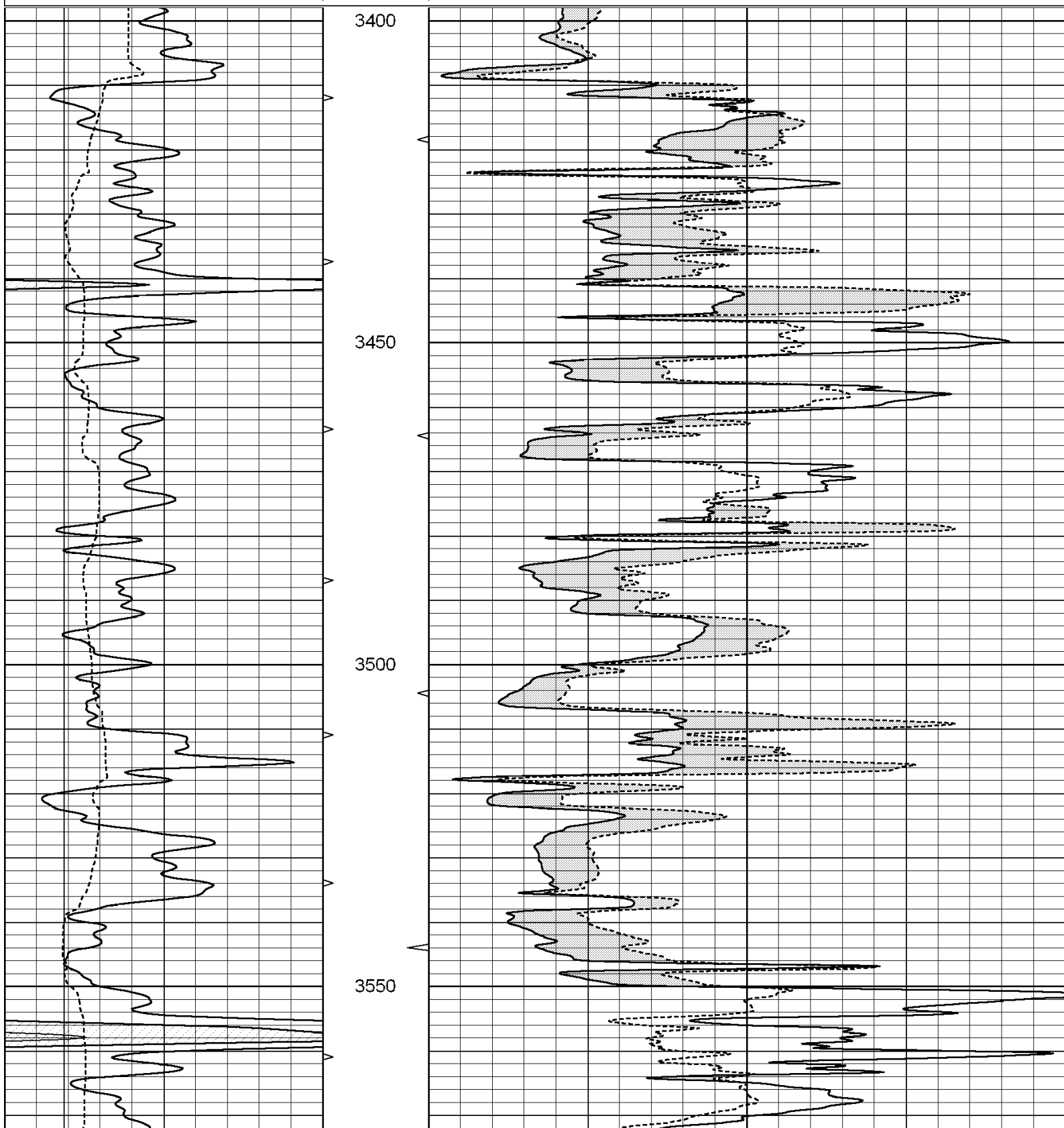


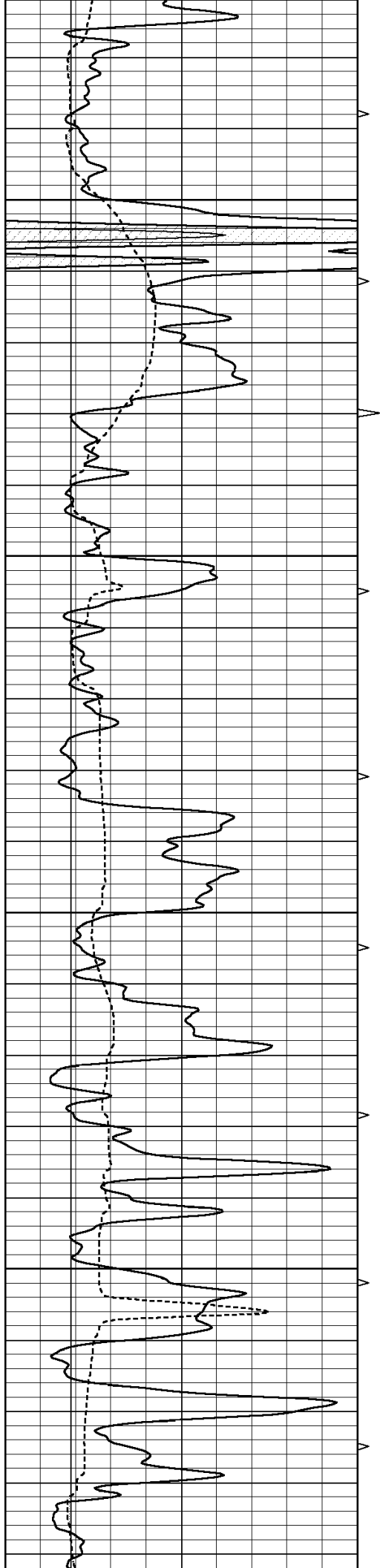
SUPERIOR
Hays,
Kansas

MAIN SECTION

Database File: 005122pe.db
Dataset Pathname: pass7.1
Presentation Format: _micro
Dataset Creation: Sat May 01 02:05:28 2010 by Calc Open-Cased 090629
Charted by: Depth in Feet scaled 1:240

0	GAMMA RAY (GAPI)	150	ABHV	0	MEL1.5 (Ohm-m)	40
6	CALIPER (in)	16	10 (ft3) 0 0	0	MEL2.0 (Ohm-m)	40
			TBHV			
			0 (ft3) 10			



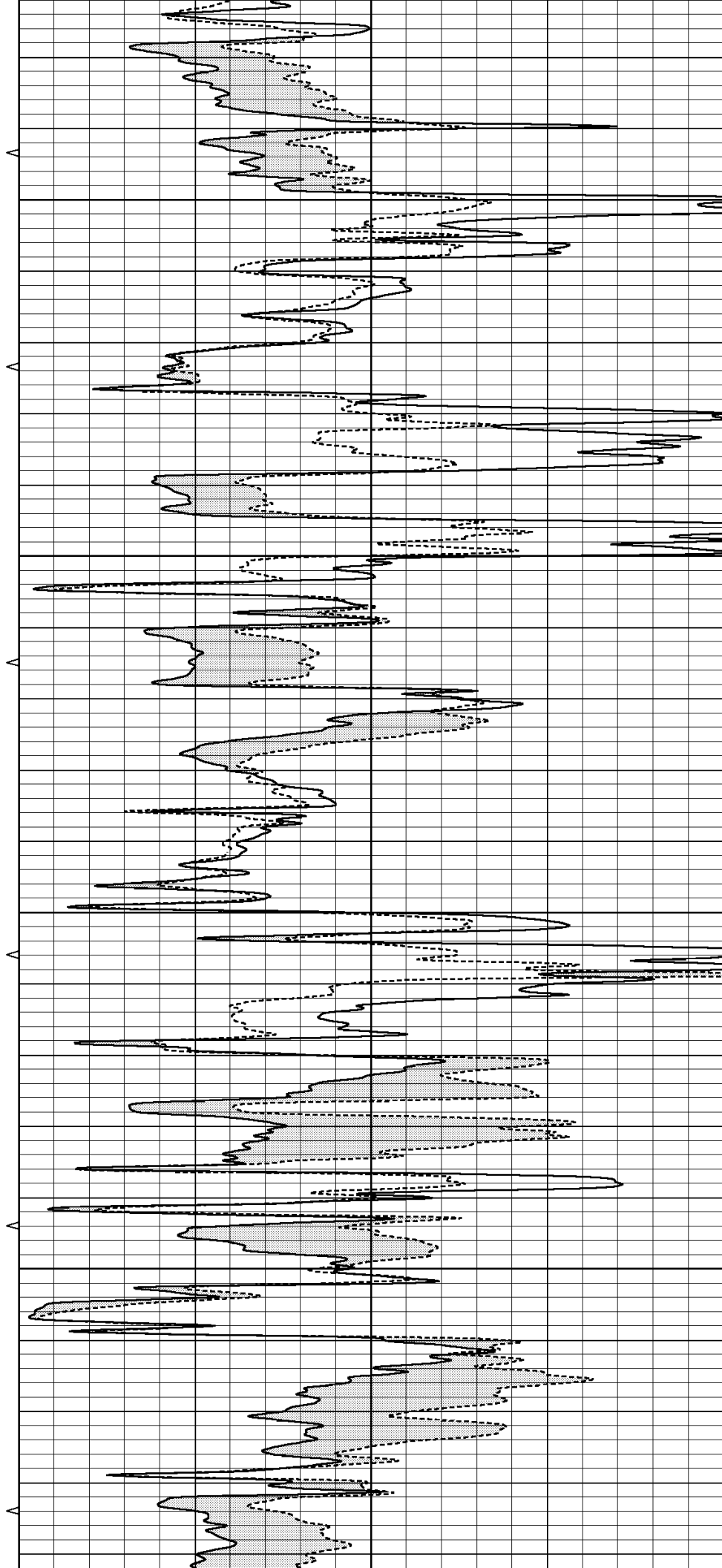


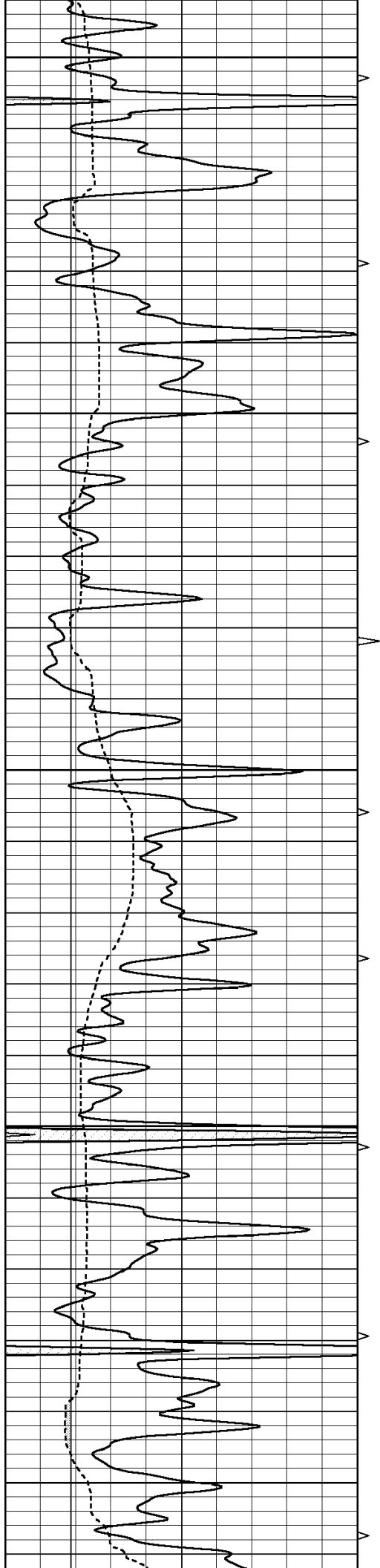
3600

3650

3700

3750





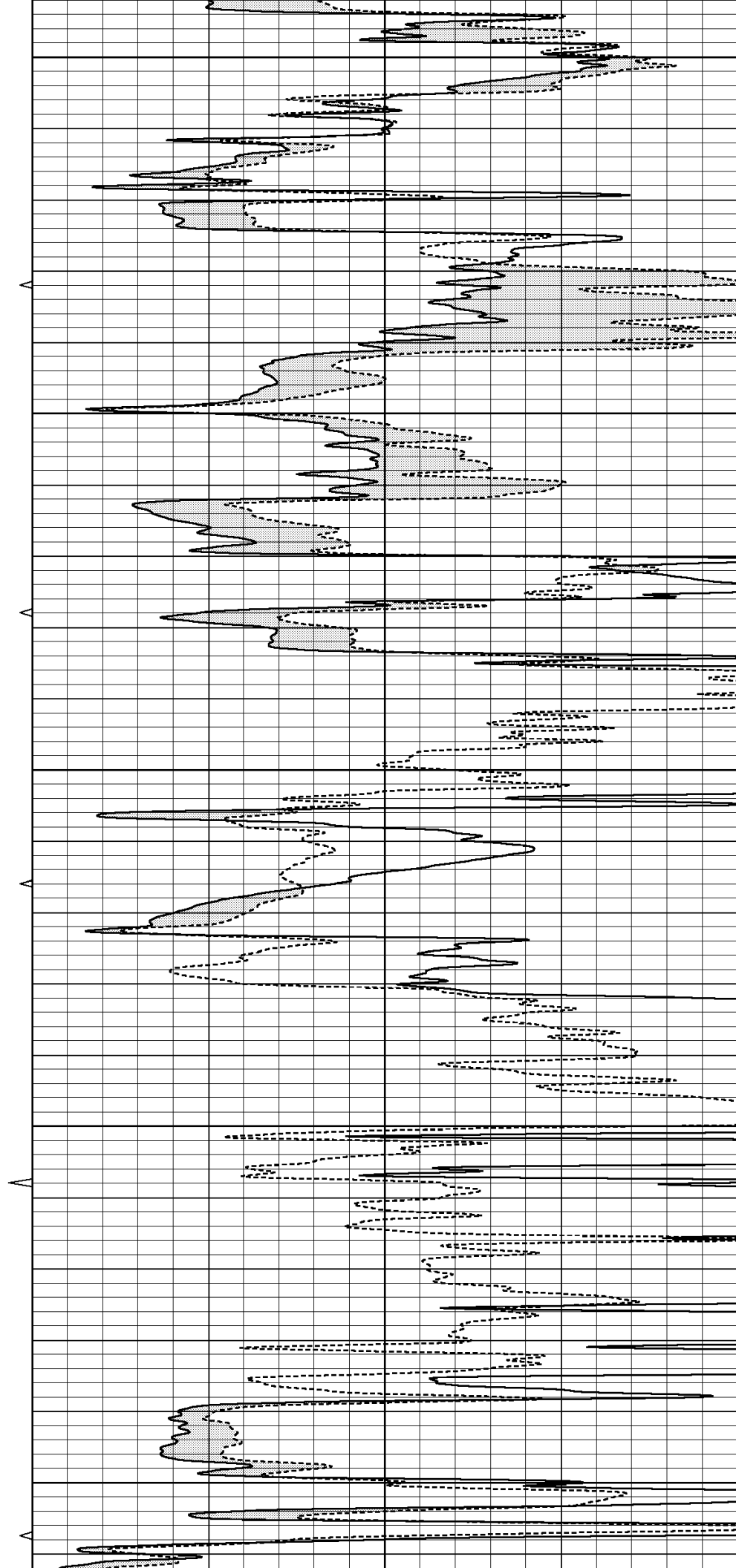
3800

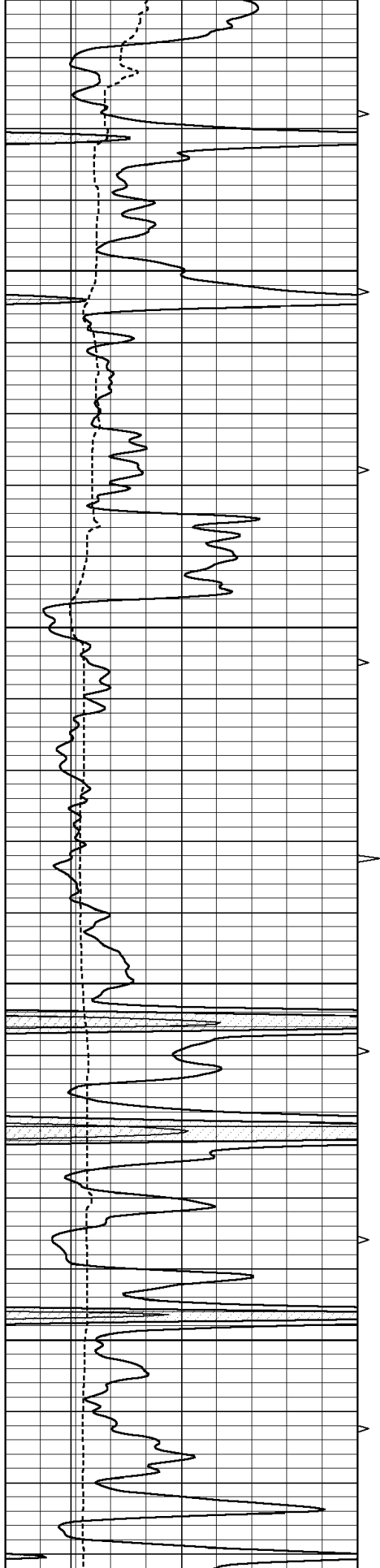
3850

3900

3950

4000



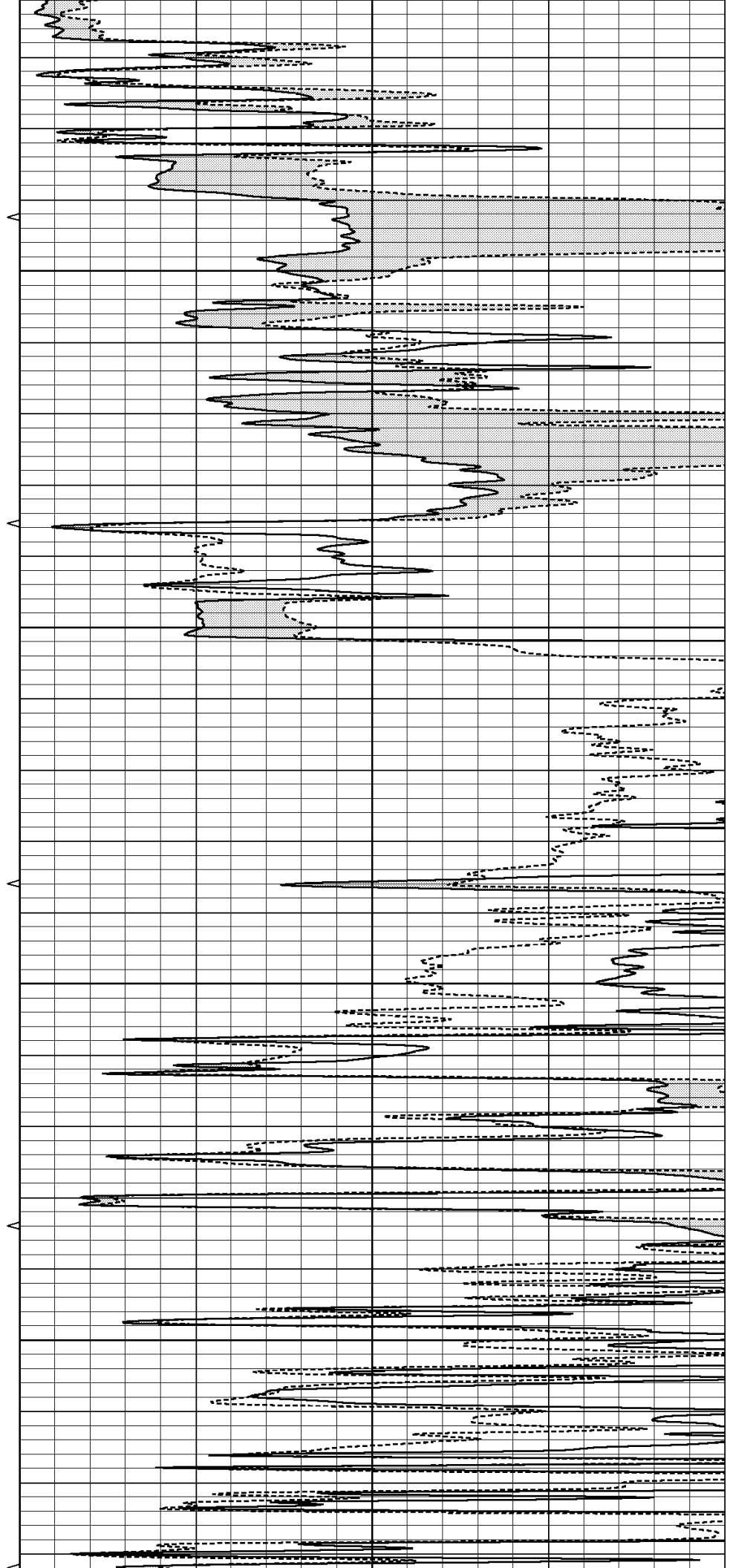


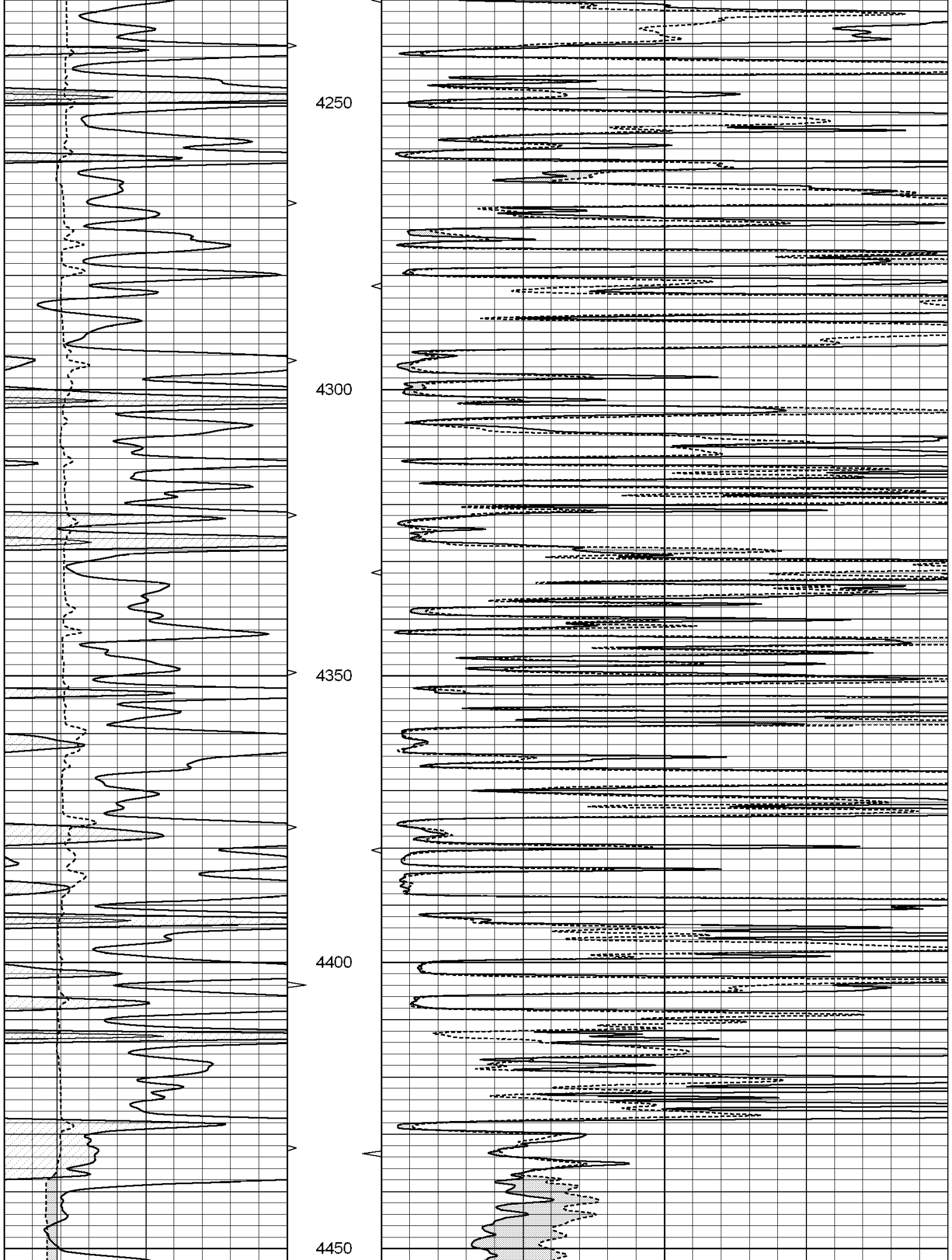
4050

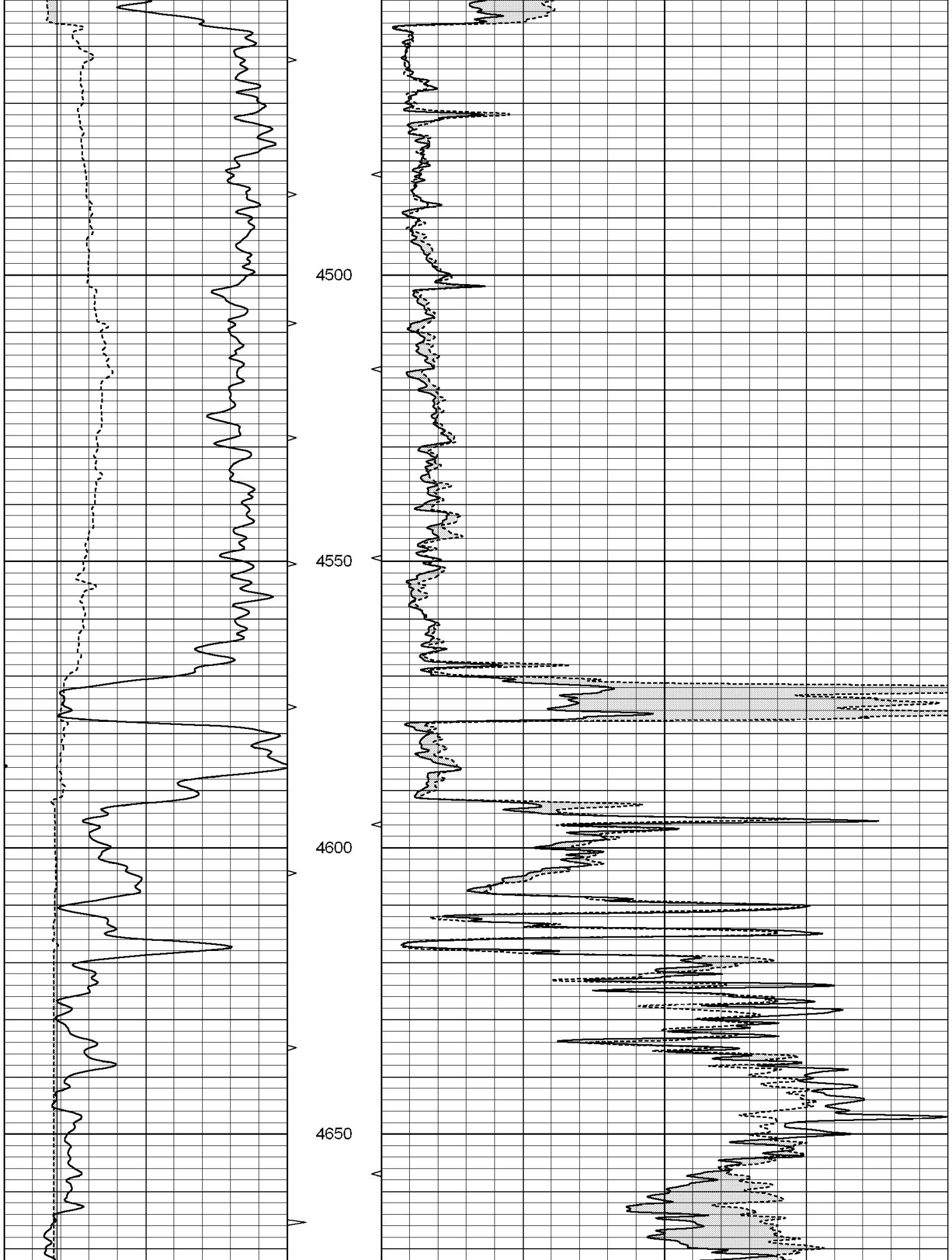
4100

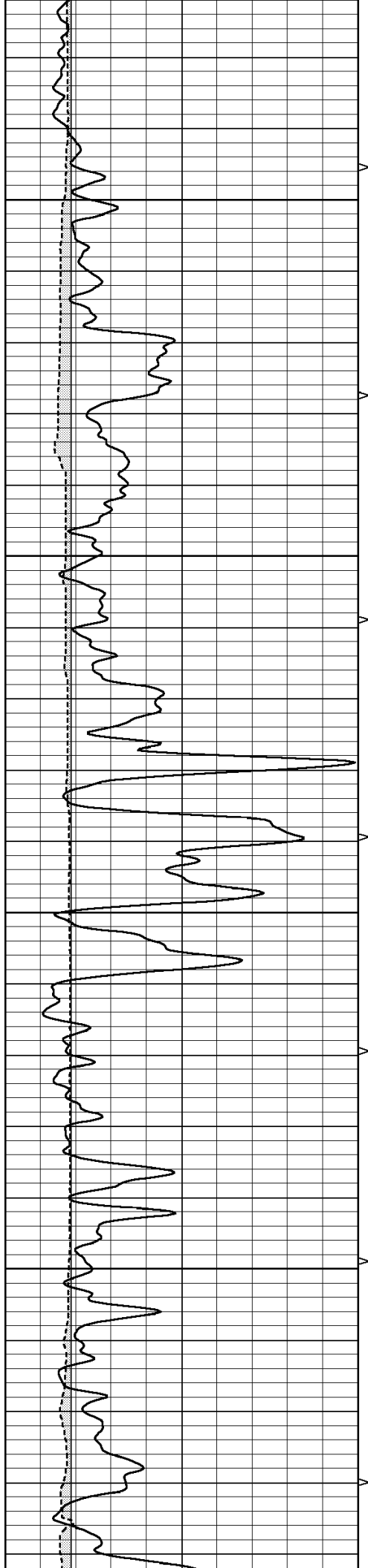
4150

4200







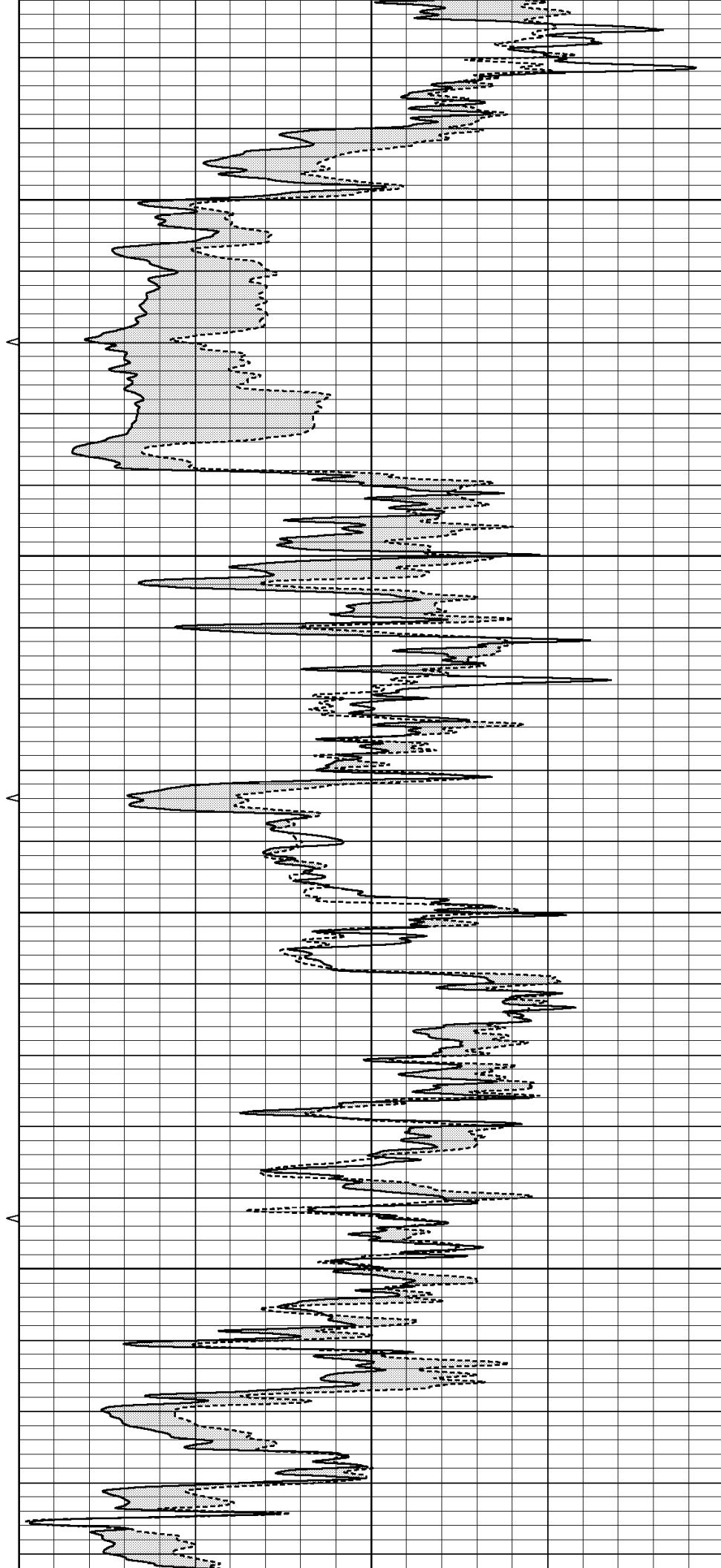


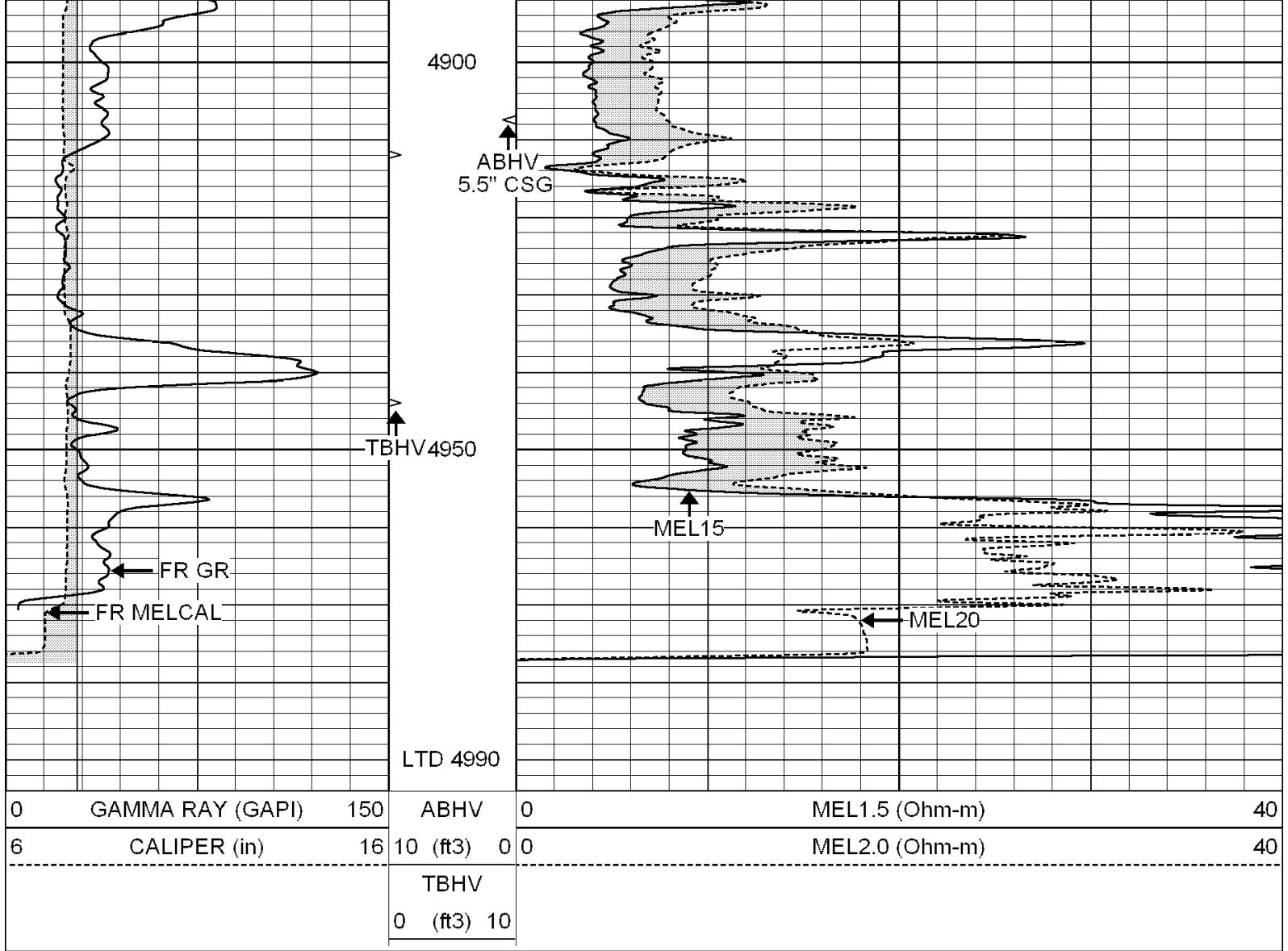
4700

4750

4800

4850



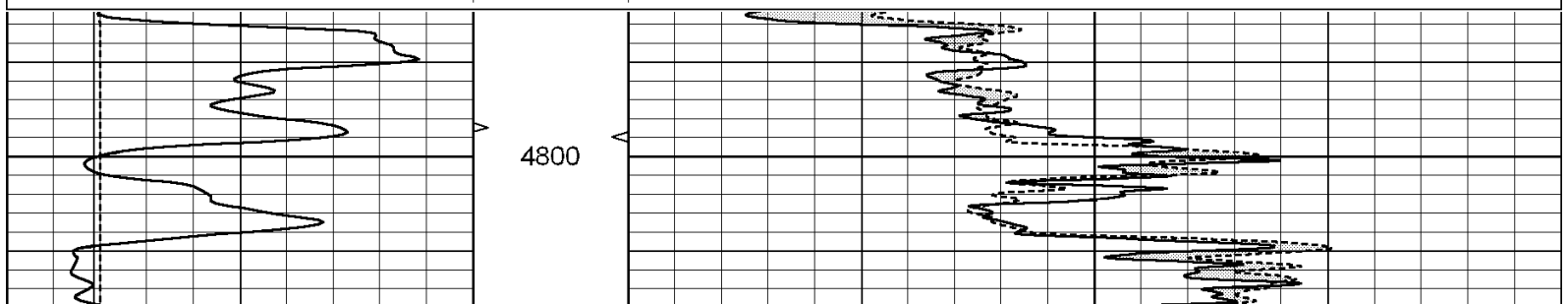


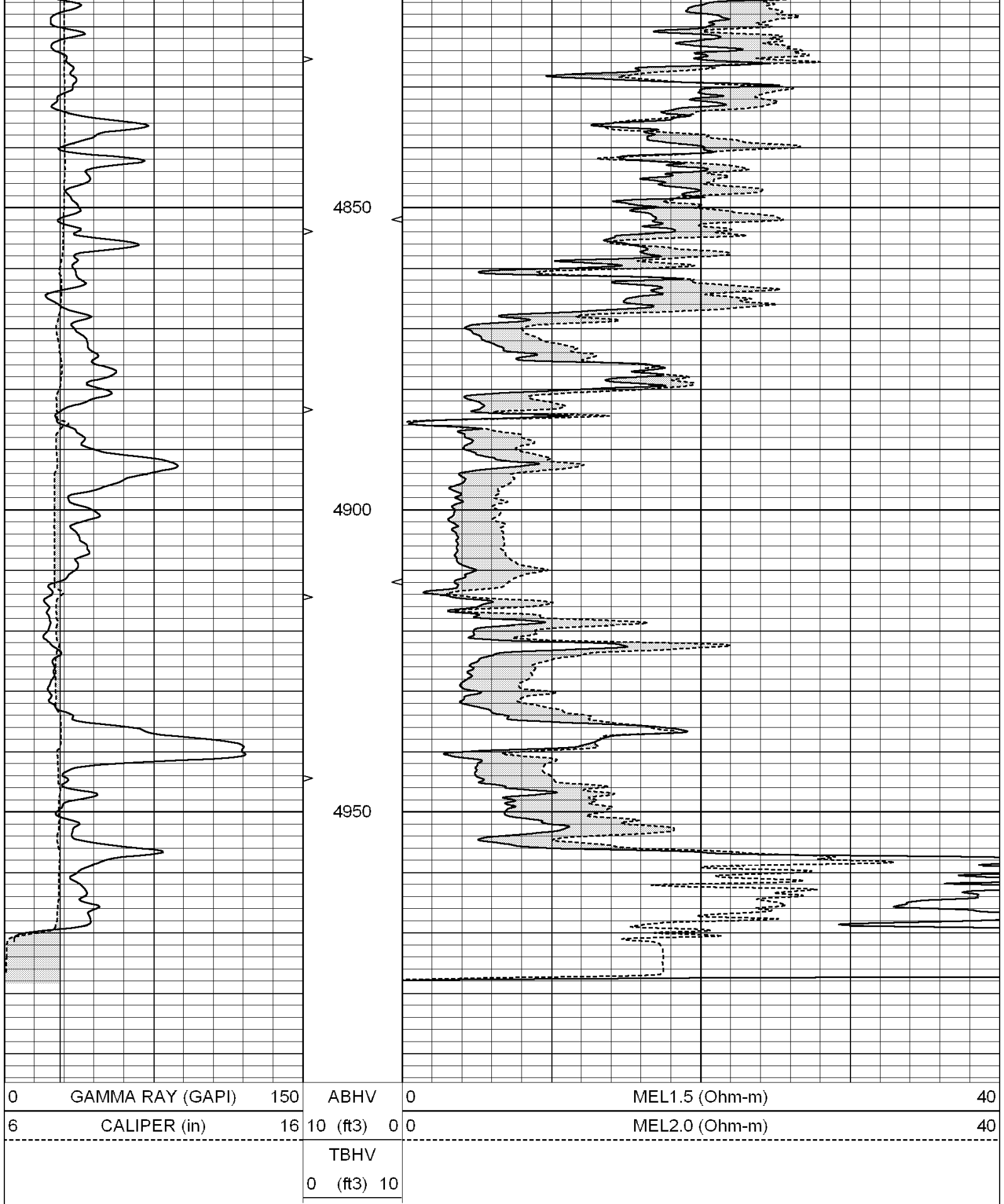
SUPERIOR
Hays,
Kansas

REPEAT SECTION

Database File: 005122pe.db
 Dataset Pathname: pass6.1
 Presentation Format: _micro
 Dataset Creation: Sat May 01 01:34:08 2010 by Calc Open-Cased 090629
 Charted by: Depth in Feet scaled 1:240

0	GAMMA RAY (GAPI)	150	ABHV	0	MEL1.5 (Ohm-m)	40
6	CALIPER (in)	16	10 (ft3)	0	MEL2.0 (Ohm-m)	40
			TBHV			
			0 (ft3)	10		





Calibration Report

Database File: 005122pe.db
Dataset Pathname: pass6.1
Dataset Creation: Sat May 01 01:34:08 2010 by Calc Open-Cased 090629

MICRO Calibration Report		
Serial Number: Tool Model: Performed:	MICRO6 PROBE Tue Apr 20 16:58:31 2010	
Caliper Calibration:	Gain=5.239	Offset=0.509
References	Low Cal	High Cal
Readings	8.000	14.000
	1.401	2.546
1.5" Calibration:	Gain=40.781	Offset=-0.851
References	Low Cal	High Cal
Readings	0.000	20.000
	0.008	1.200
2" Calibration:	Gain=75.739	Offset=-2.193
References	Low Cal	High Cal
Readings	0.000	20.000
	0.008	0.888
Gamma Ray Calibration Report		
Serial Number: Tool Model: Performed:	GR6 OPEN Tue Nov 10 08:32:36 2009	
Calibrator Value:	150.0	GAPI
Background Reading:	0.0	cps
Calibrator Reading:	276.0	cps
Sensitivity:	0.5535	GAPI/cps