

# CEMENT BOND LOG

Company Pioneer Natural Res.  
Well Jake 21-15 Tr  
Field Purgatoire River  
County Las Animas  
State Colorado

Company Pioneer Natural Resources  
Well Jake 21-15 Tr  
Field Purgatoire River  
County Las Animas  
State Colorado

Location: API #: 05 071 09630 00

SEC 15 TWP 32S RGE 66W

Permanent Datum Ground Level Elevation 7602'  
Log Measured From Kelly Bushing 4' Above G L  
Drilling Measured From Kelly Bushing

Elevation  
K.B. 7606'  
D.F.  
G.L. 7602'

Date 8-18-11

Run Number One  
Depth Driller 1950'  
Depth Logger 1917'  
Bottom Logged Interval 1913'  
Top Log Interval Surf.  
Open Hole Size 8 3/4  
Type Fluid Water  
Density / Viscosity  
Max. Recorded Temp.   
Estimated Cement Top   
Time Well Ready Portable Mast  
Time Logger on Bottom 12:00  
Equipment Number 440  
Location Trinidad  
Recorded By Larson  
Witnessed By Curtis Adams

Run Number Bit From To Size Weight From To

Casing Record Size Wgt/Ft Top Bottom  
Surface String 8 5/8  
Prot. String  
Production String 5 1/2 TD  
Liner

<<< Fold Here >>>

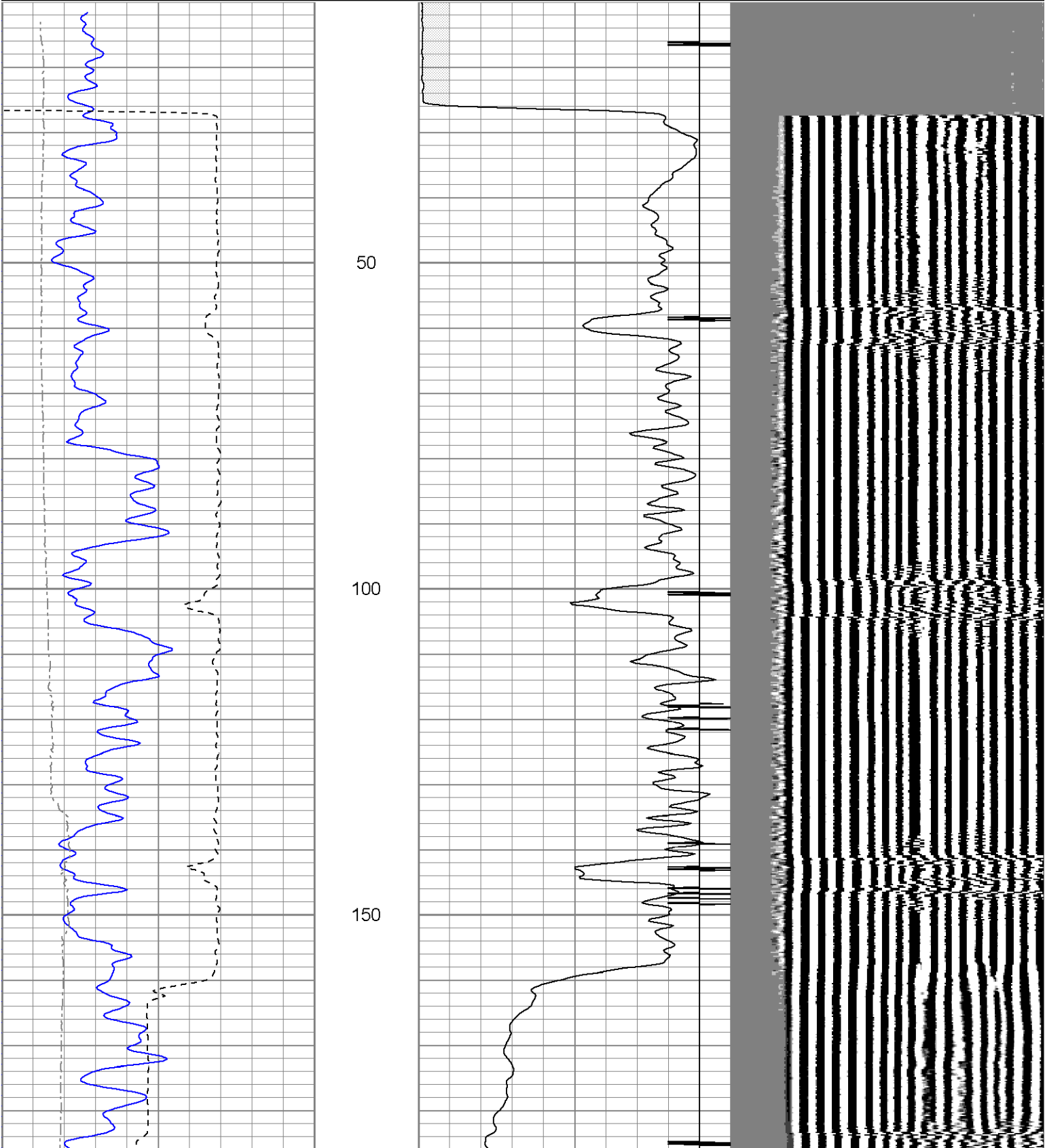
All interpretations are opinions based on inferences from electrical or other measurements and we cannot and do not guarantee the accuracy or correctness of any interpretation, and we shall not, except in the case of gross or willful negligence on our part, be liable or responsible for any loss, costs, damages, or expenses incurred or sustained by anyone resulting from any interpretation made by any of our officers, agents or employees. These interpretations are also subject to our general terms and conditions set out in our current Price Schedule.

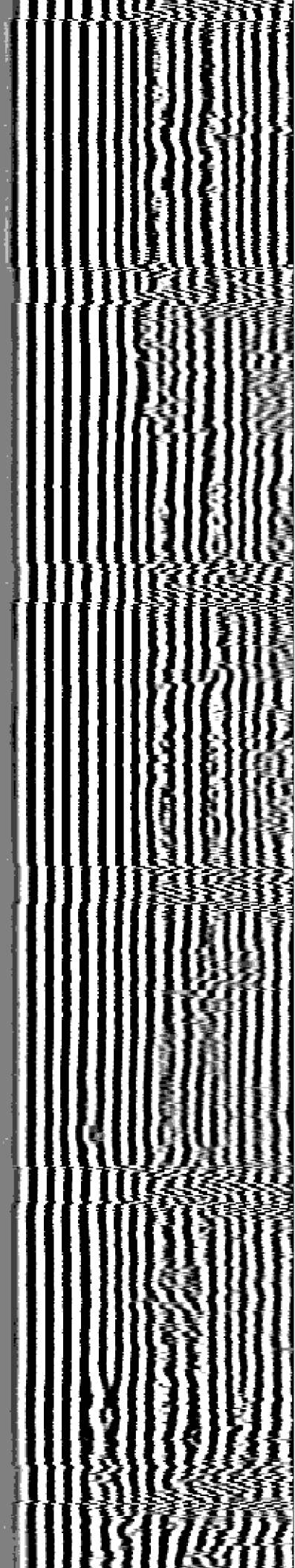
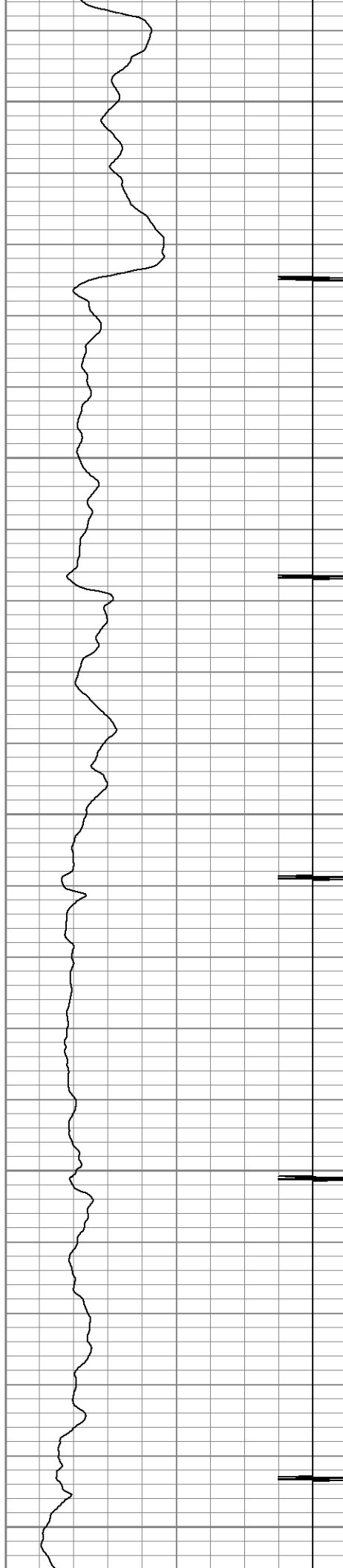
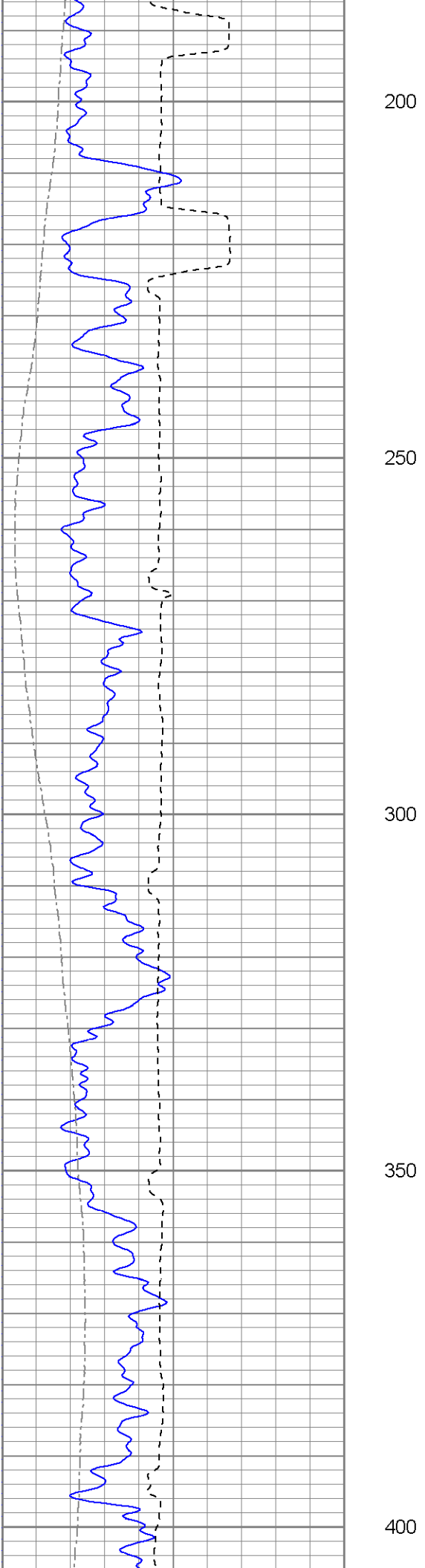
## Comments

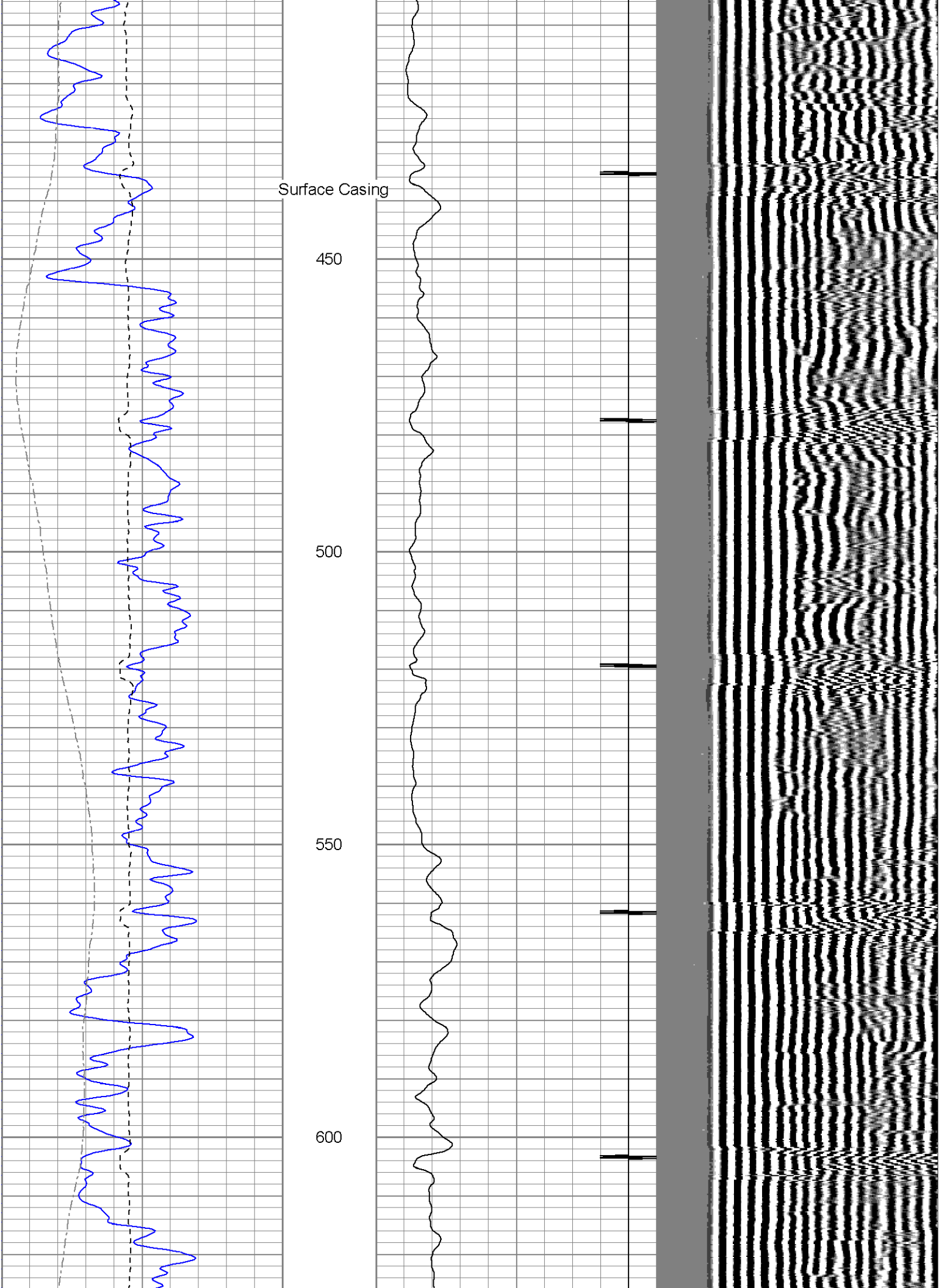
Bon Carbo left @ post office follow main rd to 30.1 stay straight go past gordins house thru geen gate  
Hayden Ranch drive past one location @Y stay left @ next Y stay right dead end on location

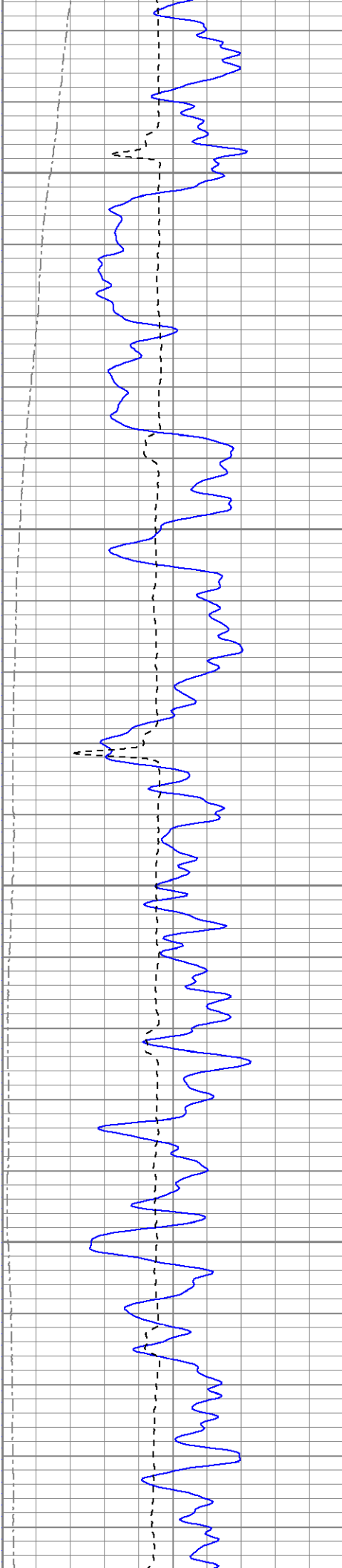
Database File: jake21-15trcbl81811.db  
Dataset Pathname: pass3  
Presentation Format: cbl  
Dataset Creation: Wed Jan 01 00:38:32 2003 by Log Open-Cased 071220  
Charted by: Depth in Feet scaled 1:240

|     |            |     |    |           |     |     |     |      |
|-----|------------|-----|----|-----------|-----|-----|-----|------|
| 0   | GR (GAPI)  | 200 | 18 | CCL       | -2  | 200 | VDL | 1200 |
| 200 | GR (GAPI)  | 400 | 0  | AMP3 (mV) | 100 |     |     |      |
| 400 | TT3 (usec) | 200 |    |           |     |     |     |      |
| 0   | DEVI (°)   | 10  |    |           |     |     |     |      |







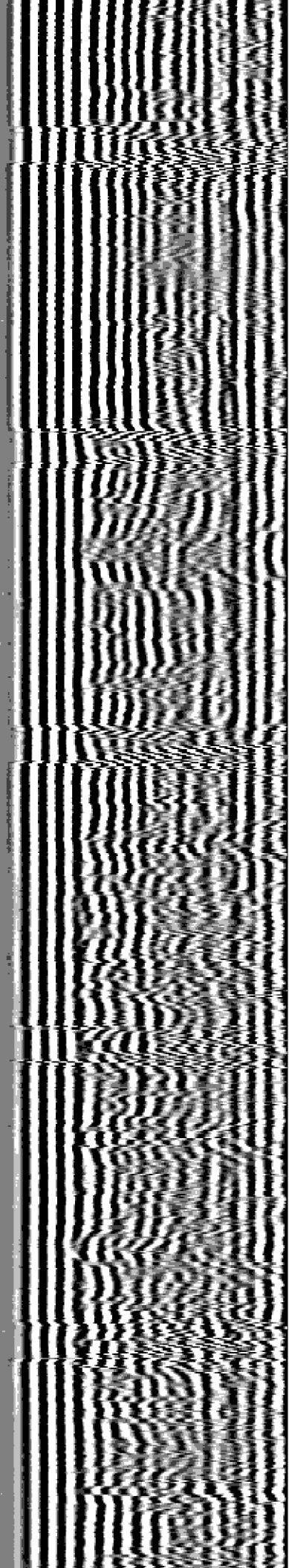
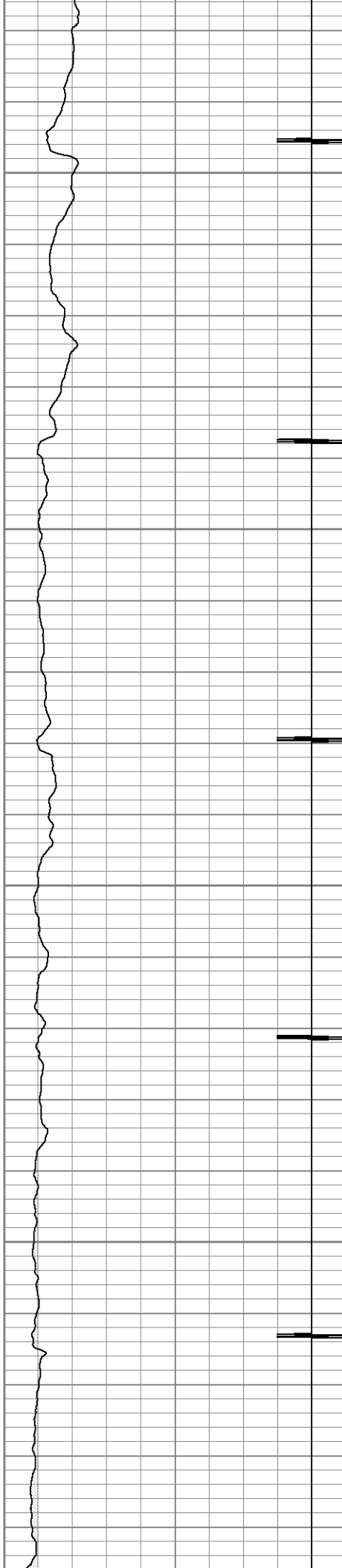


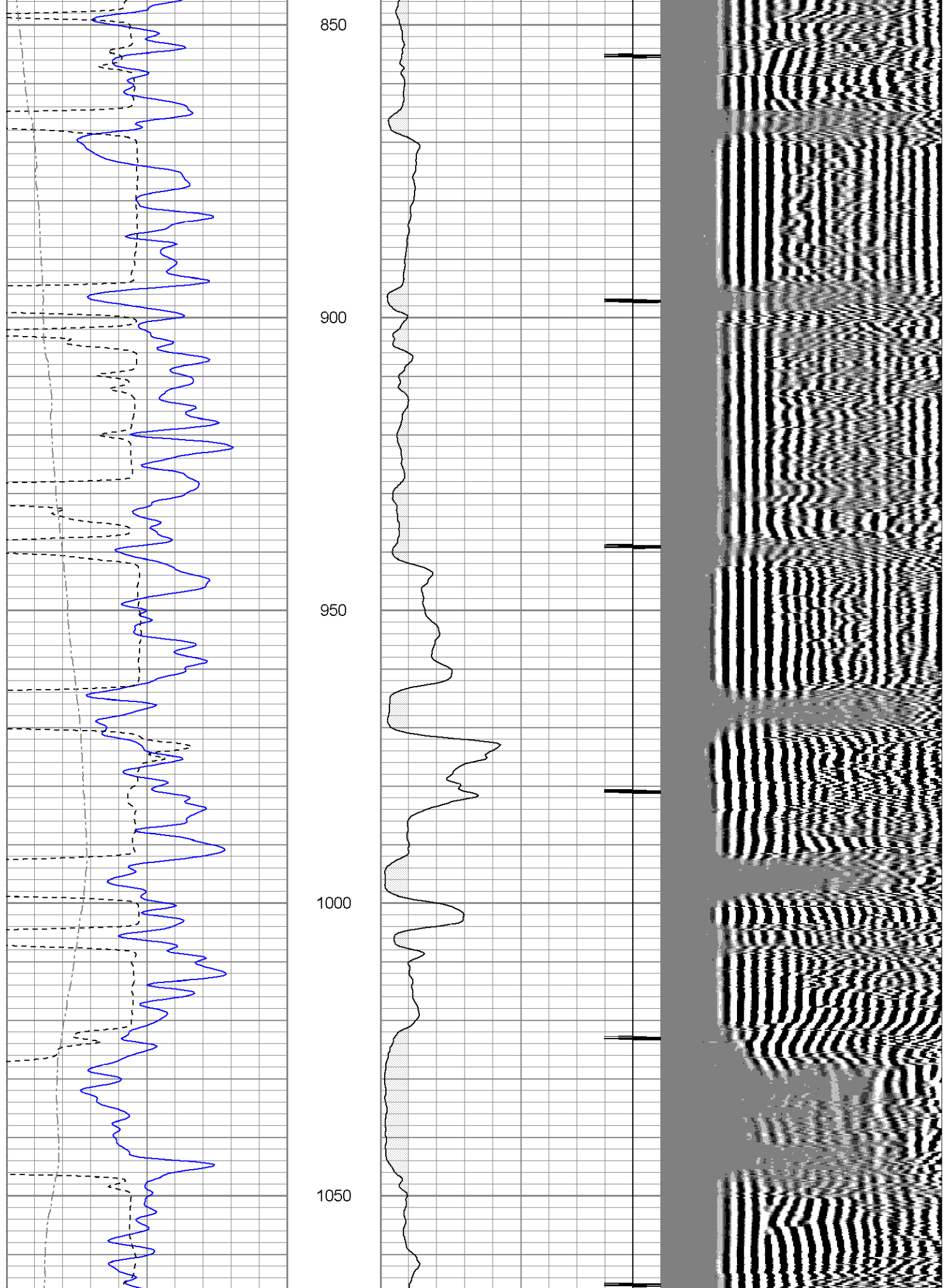
650

700

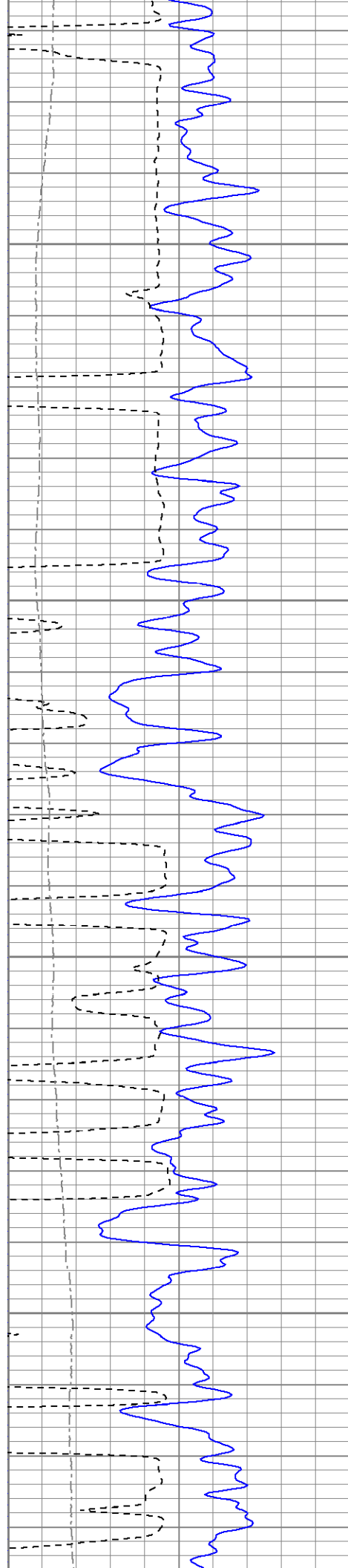
750

800







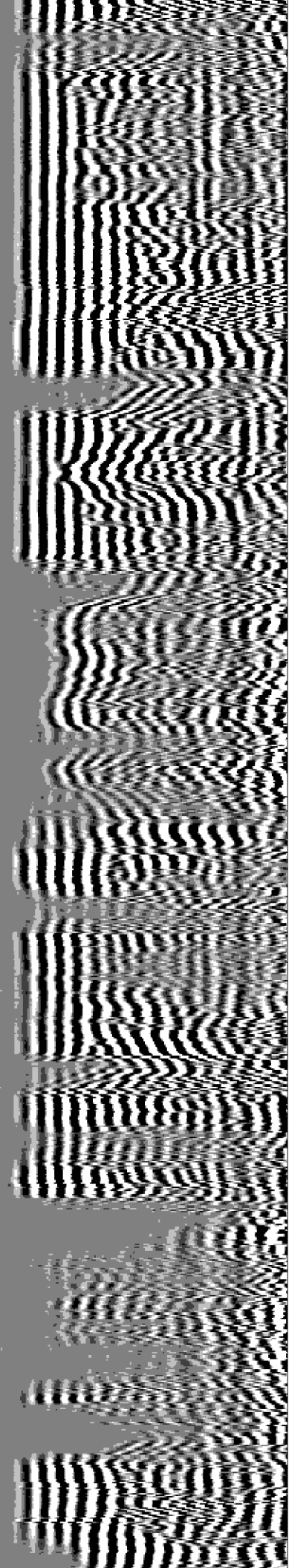


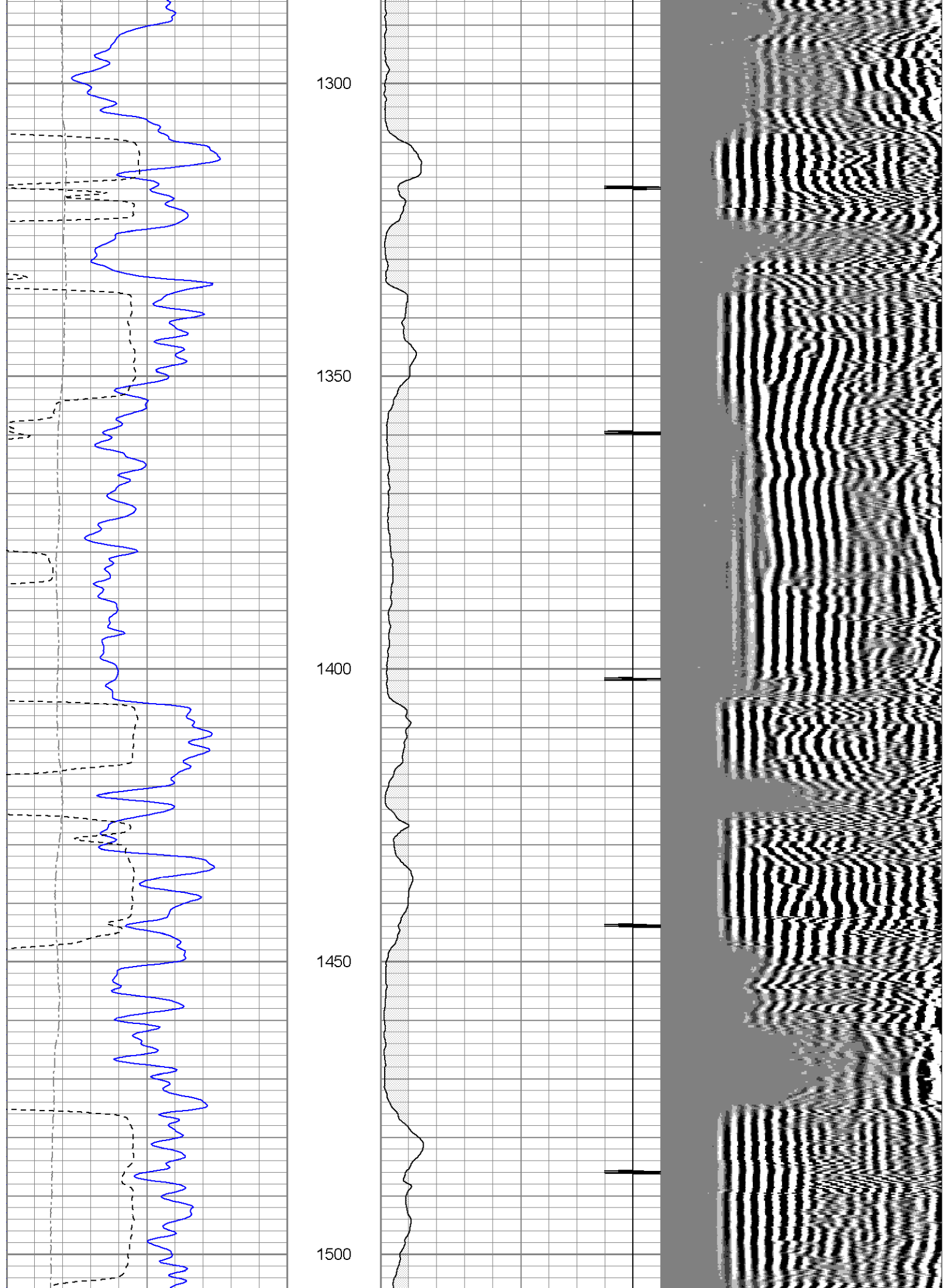
1100

1150

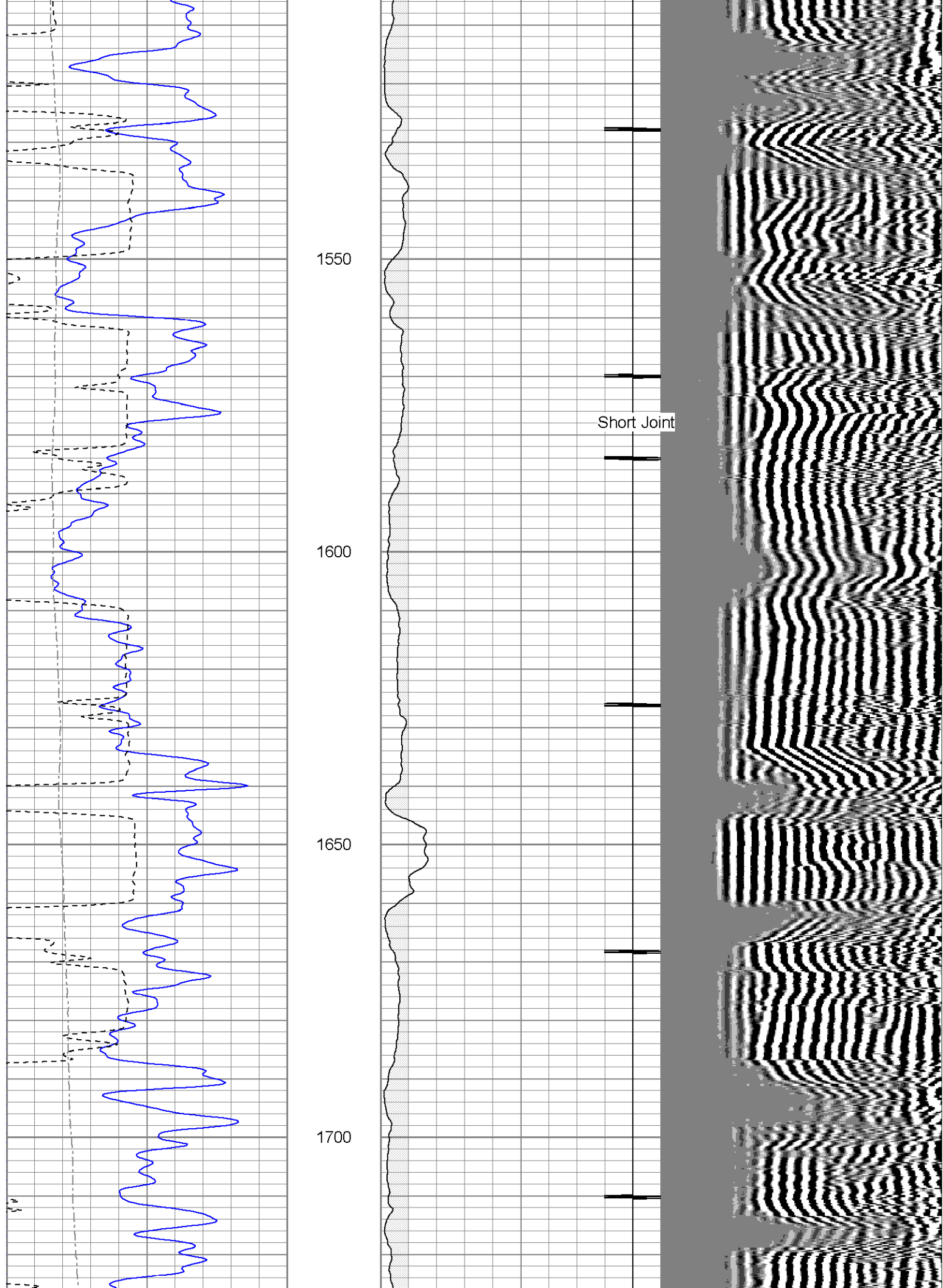
1200

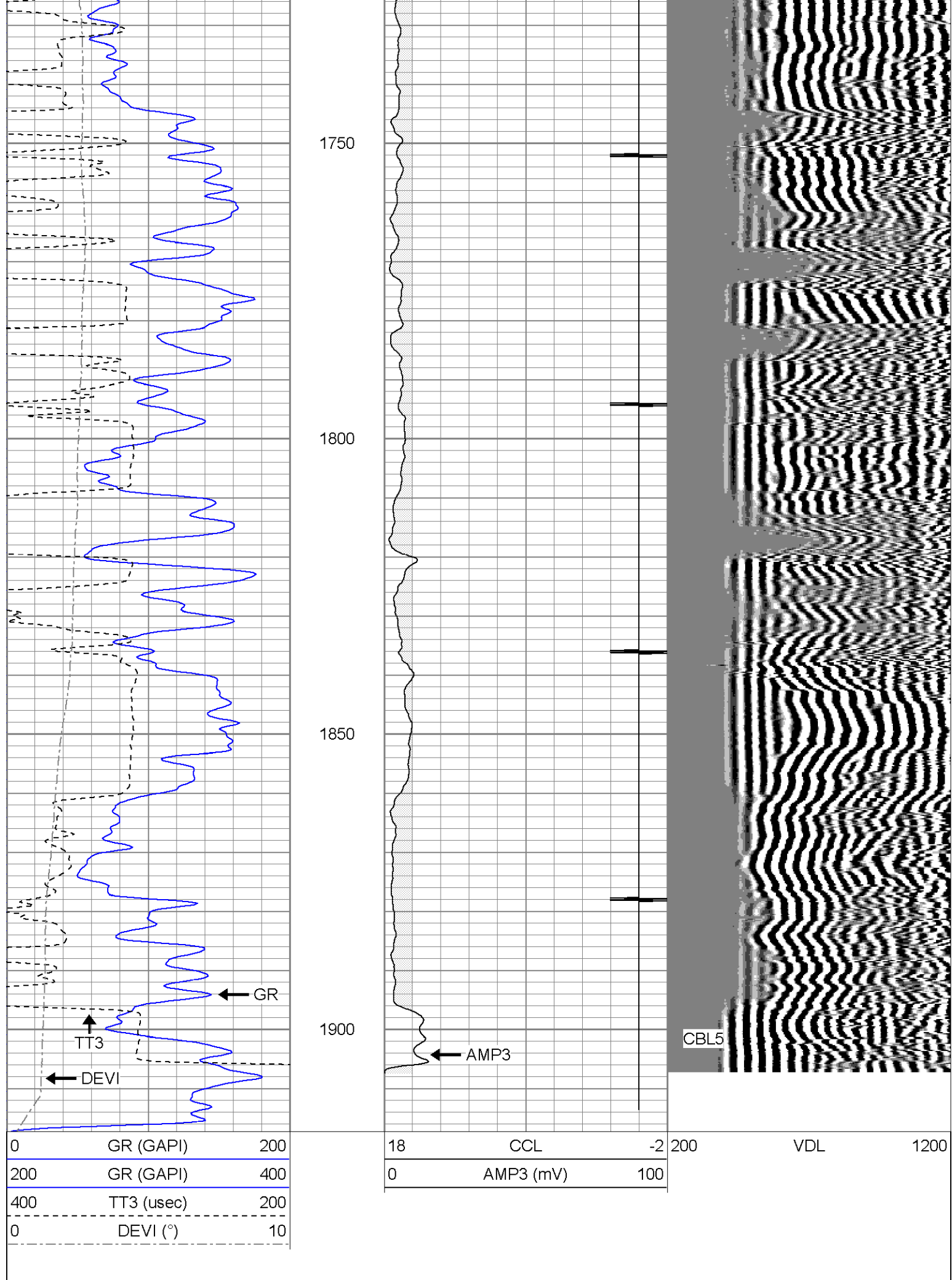
1250











# Repeat Pass No PSI

Database File: jake21-15trcbl81811.db  
 Dataset Pathname: pass1  
 Presentation Format: cbl  
 Dataset Creation: Wed Jan 01 00:23:03 2003 by Log Open-Cased 071220  
 Charted by: Depth in Feet scaled 1:240

|     |            |     |
|-----|------------|-----|
| 0   | GR (GAPI)  | 200 |
| 200 | GR (GAPI)  | 400 |
| 400 | TT3 (usec) | 200 |
| 0   | DEVI (°)   | 10  |

|    |           |     |     |     |      |
|----|-----------|-----|-----|-----|------|
| 18 | CCL       | -2  | 200 | VDL | 1200 |
| 0  | AMP3 (mV) | 100 |     |     |      |

