

Company		Pioneer Natural Resources	
Well	Talon 34-25 Tr		
Field	Purgatoire River		
County	Las Animas	State	Colorado
Location:		API #: 05 071 09847 00	
SEC 25 TWP 32S RGE 68W		CDNL	
Permanent Datum	Ground Level	Elevation	8133'
Log Measured From	Kelly Bushing 4' AGL		
Drilling Measured From	Kelly Bushing		
Other Services			
Date 7-31-11			
Run Number	One		
Depth Driller	2441'		
Depth Logger	2438'		
Bottom Logged Interval	2436'		
Top Log Interval	Surface Casing		
Casing Driller	8 5/8" @ 1106'		
Casing Logger	1104'		
Bit Size	7 7/8"		
Type Fluid in Hole	Water		
Density / Viscosity	///		
pH / Fluid Loss	///		
Source of Sample	///		
Rm @ Meas. Temp	///		
Rmf @ Meas. Temp	///		
Rmc @ Meas. Temp	///		
Source of Rmf / Rmc	///		
Rm @ BHT	///		
Time Circulation Stopped	6:30 P.M.		
Time Logger on Bottom	12:15 A.M.		
Maximum Recorded Temperature	90 DEG F		
Equipment Number	T590		
Location	Trinidad		
Recorded By	C. Sisneros		
Witnessed By	Mr. Ramon Gonzales		

<<< Fold Here >>>

All interpretations are opinions based on inferences from electrical or other measurements and we cannot and do not guarantee the accuracy or correctness of any interpretation, and we shall not, except in the case of gross or willful negligence on our part, be liable or responsible for any loss, costs, damages, or expenses incurred or sustained by anyone resulting from any interpretation made by any of our officers, agents or employees. These interpretations are also subject to our general terms and conditions set out in our current Price Schedule.

Comments

Directions:
Wet Canyon,

Database File: talontr.db
Dataset Pathname: pass2.1
Presentation Format: iel
Dataset Creation: Mon Aug 01 01:23:03 2011 by Calc Open-Cased 110302
Charted by: Depth in Feet scaled 1:240

0	GR (GAPI)	200
-200	SP (mV)	0

0.2	DIR (Ohm-m)	2000
0.2	SN (Ohm-m)	2000

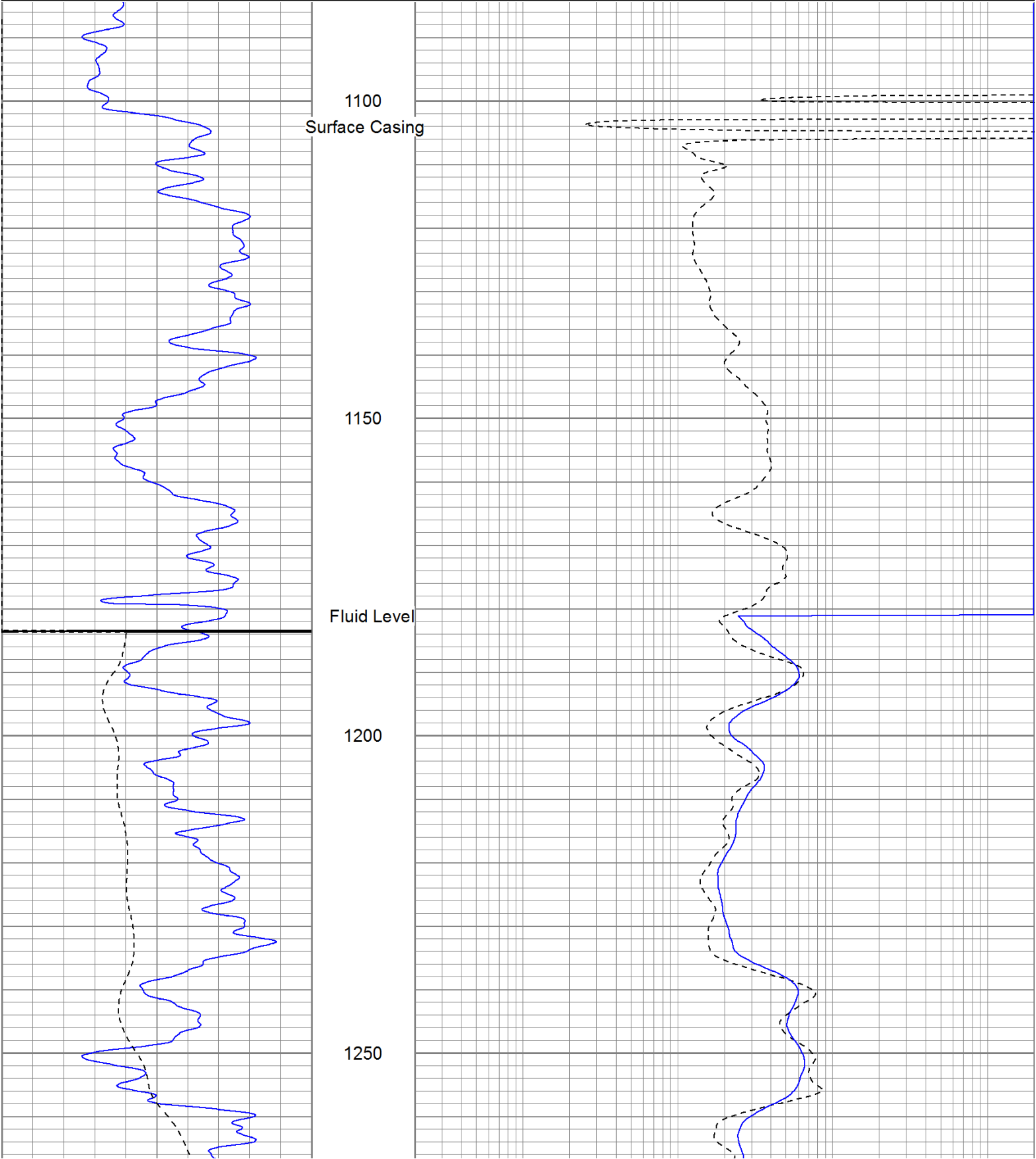
1100
Surface Casing

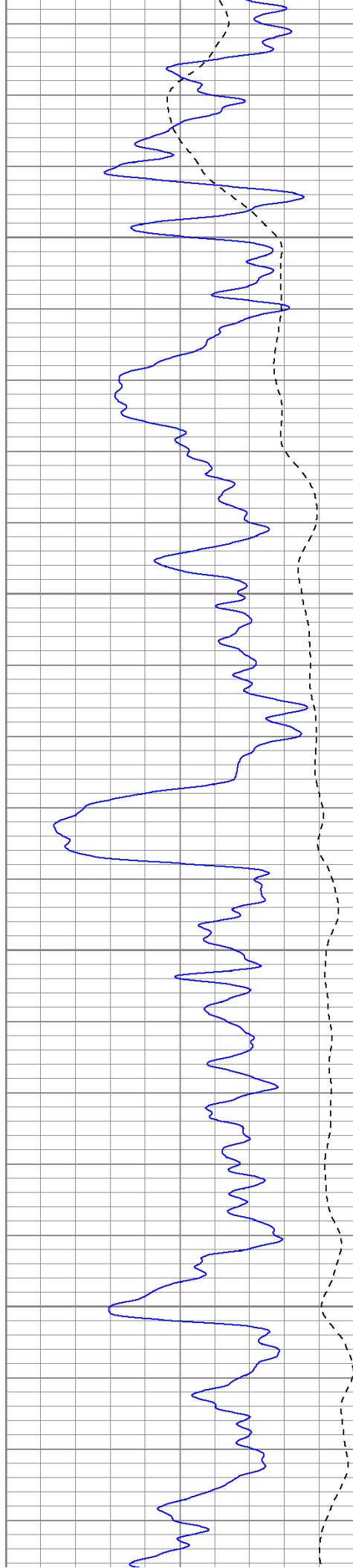
1150

Fluid Level

1200

1250



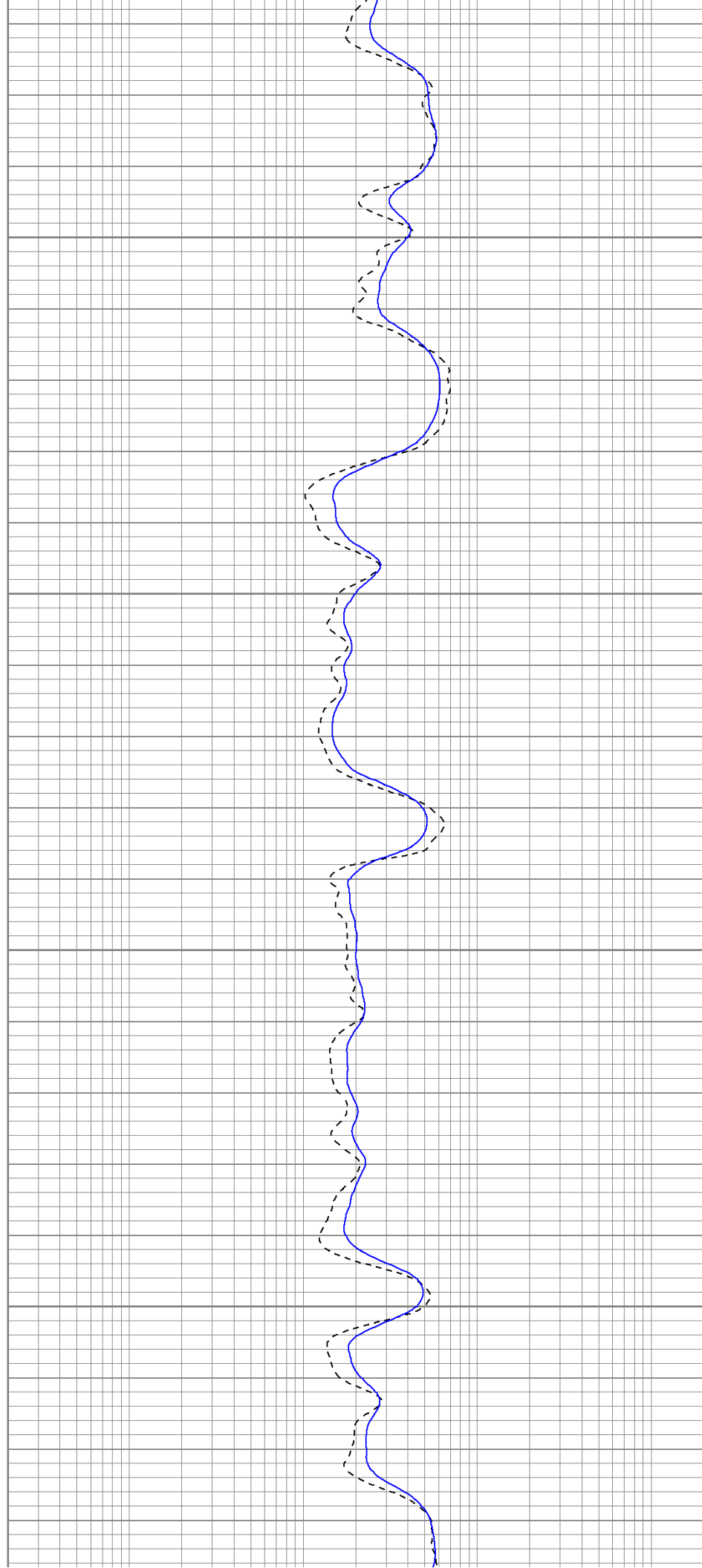


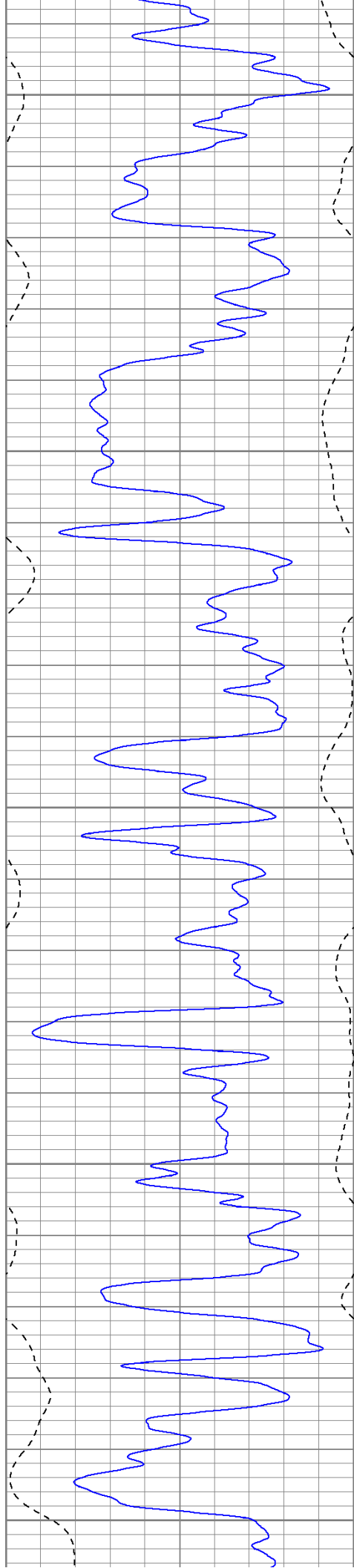
1300

1350

1400

1450





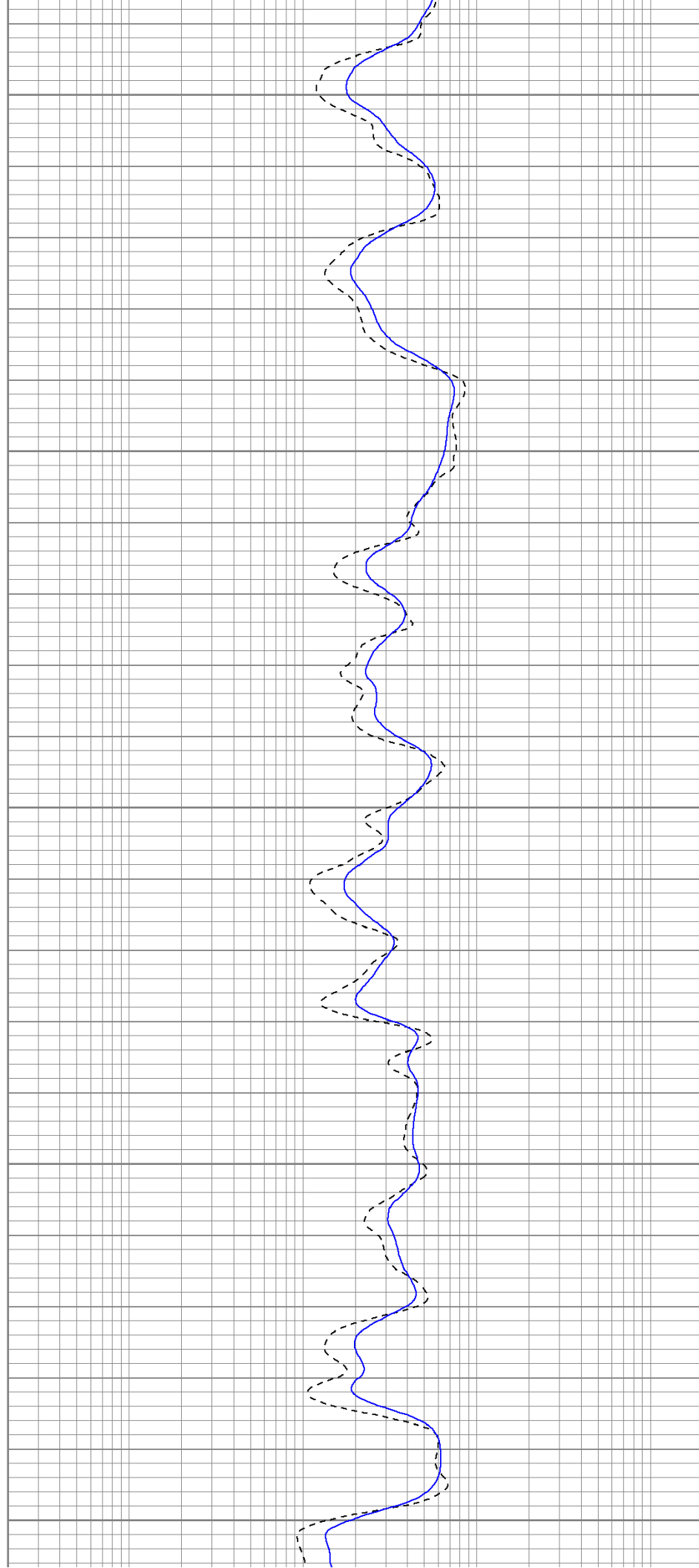
1500

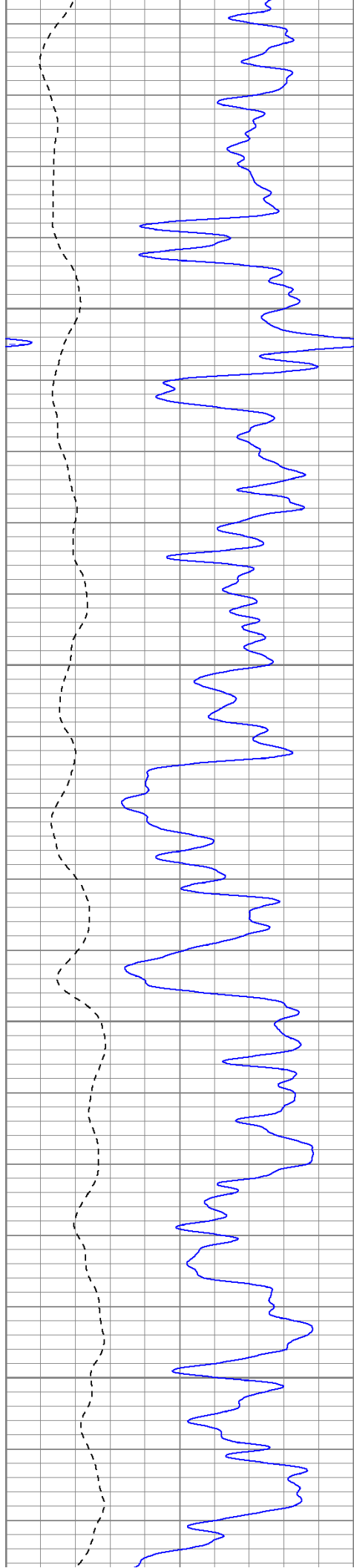
1550

1600

1650

1700



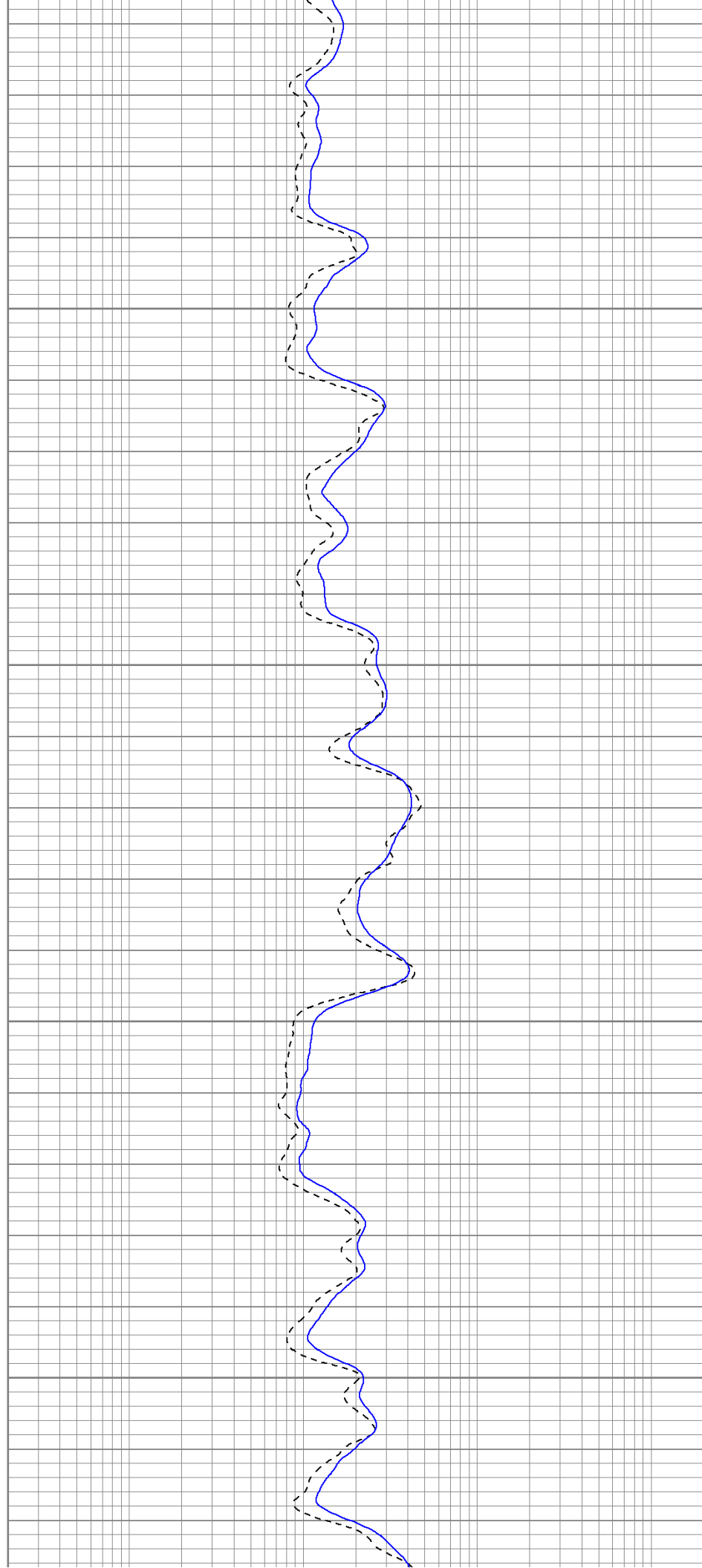


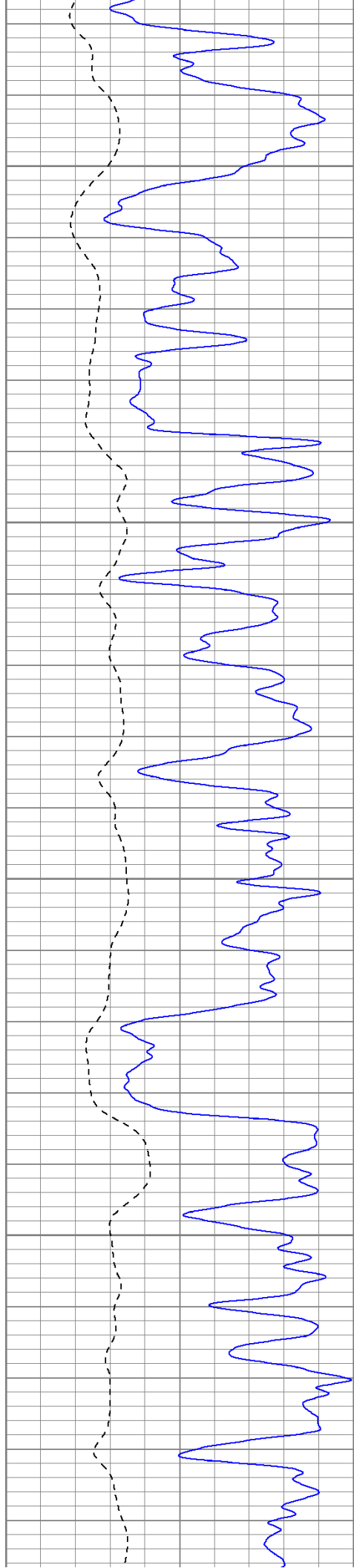
1750

1800

1850

1900



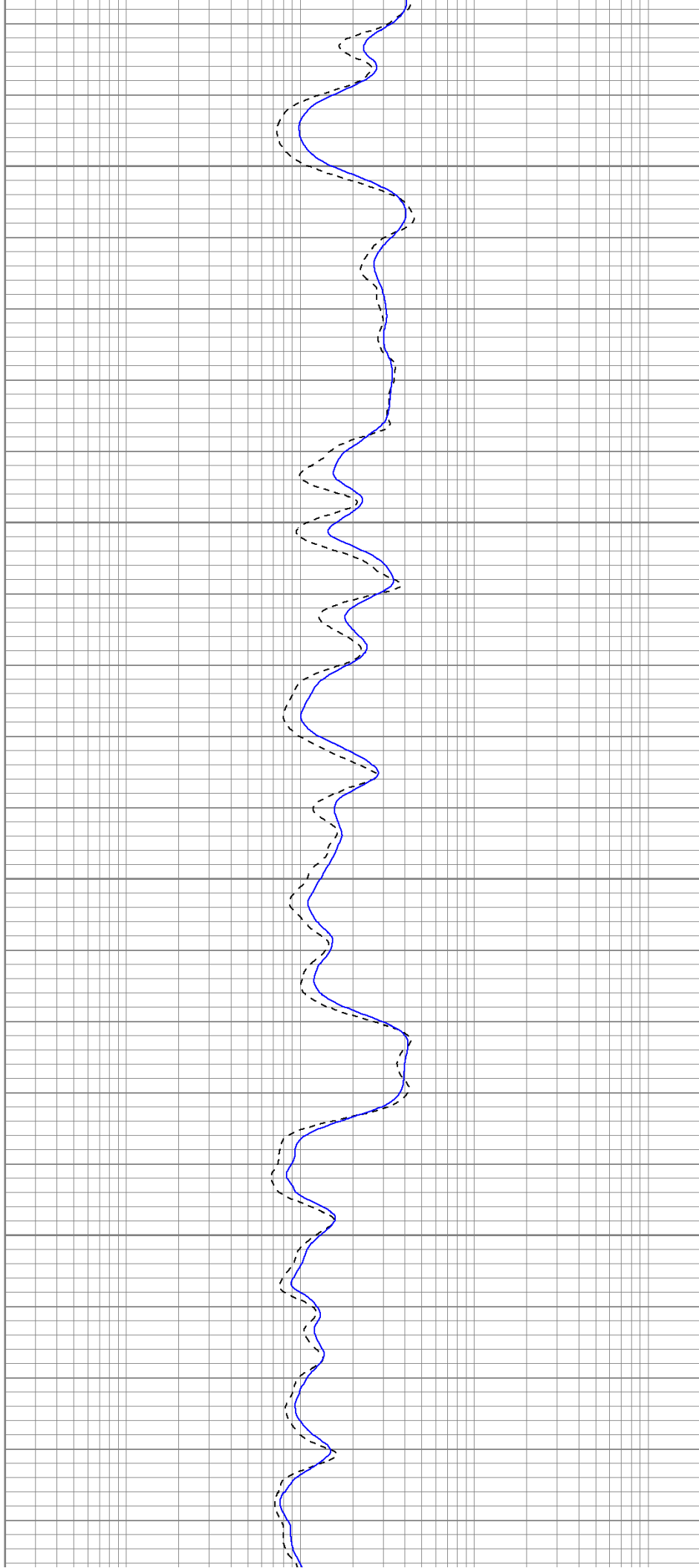


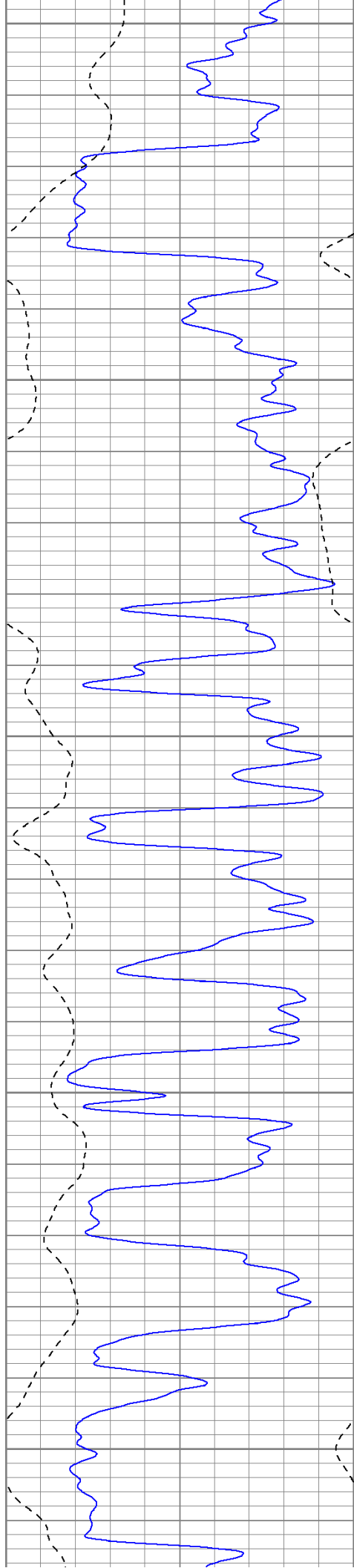
1950

2000

2050

2100





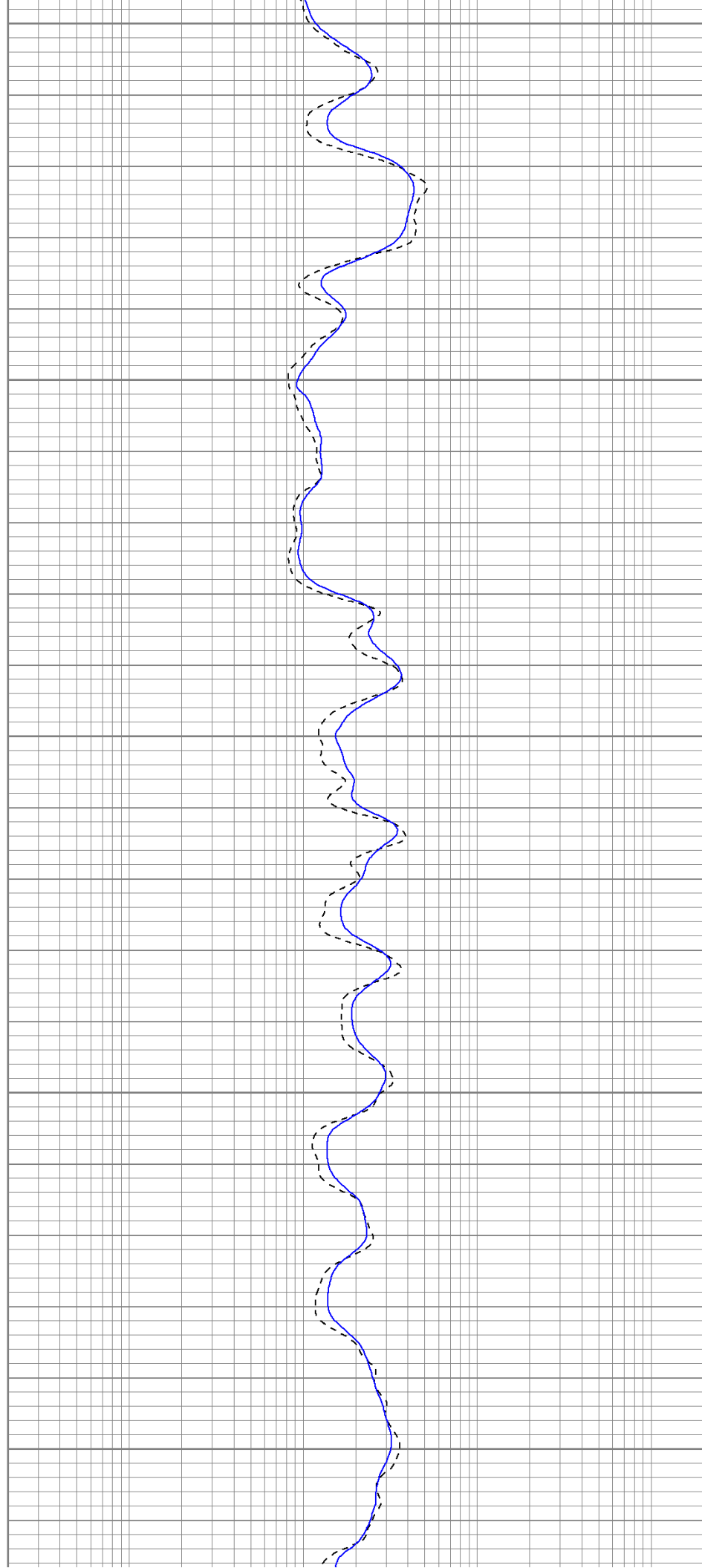
2150

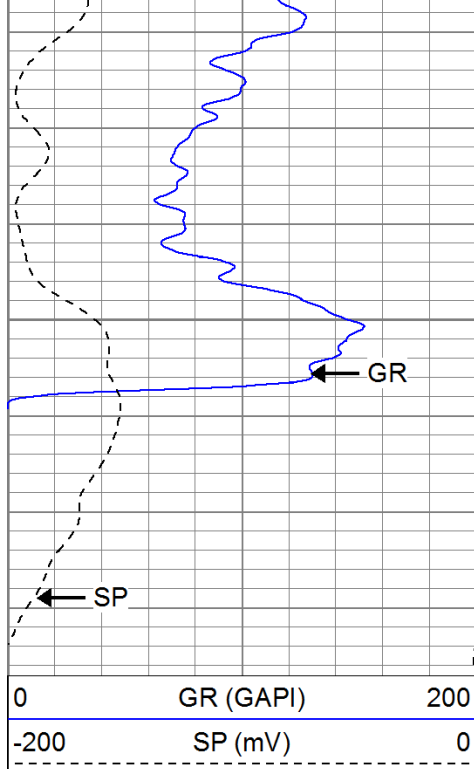
2200

2250

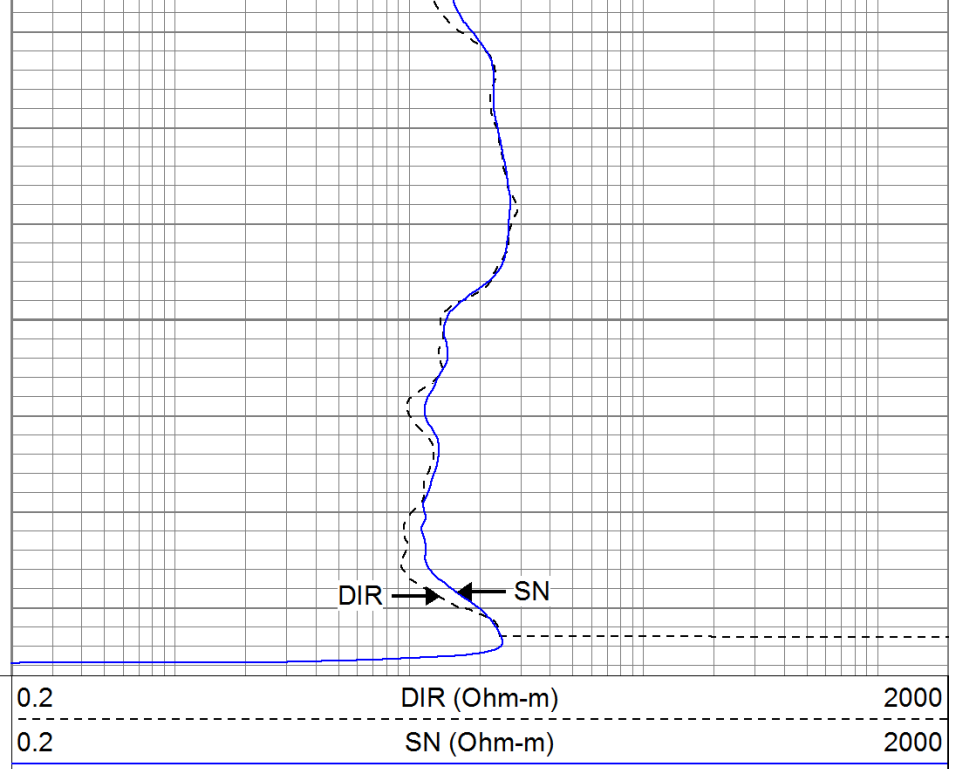
2300

2350



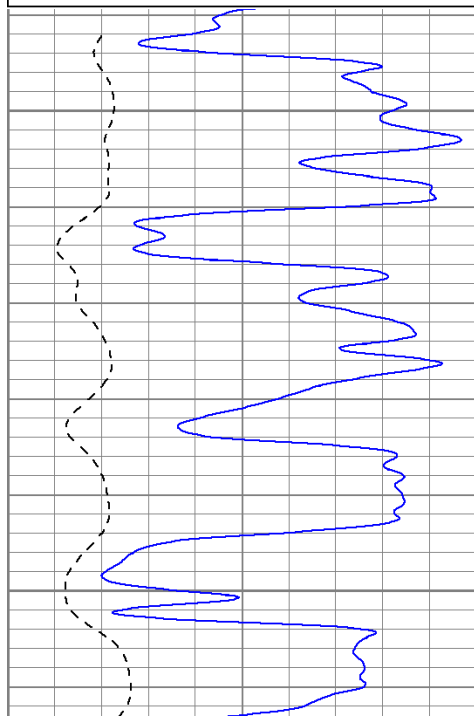
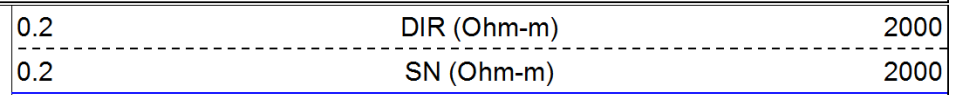
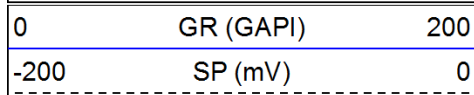


2400



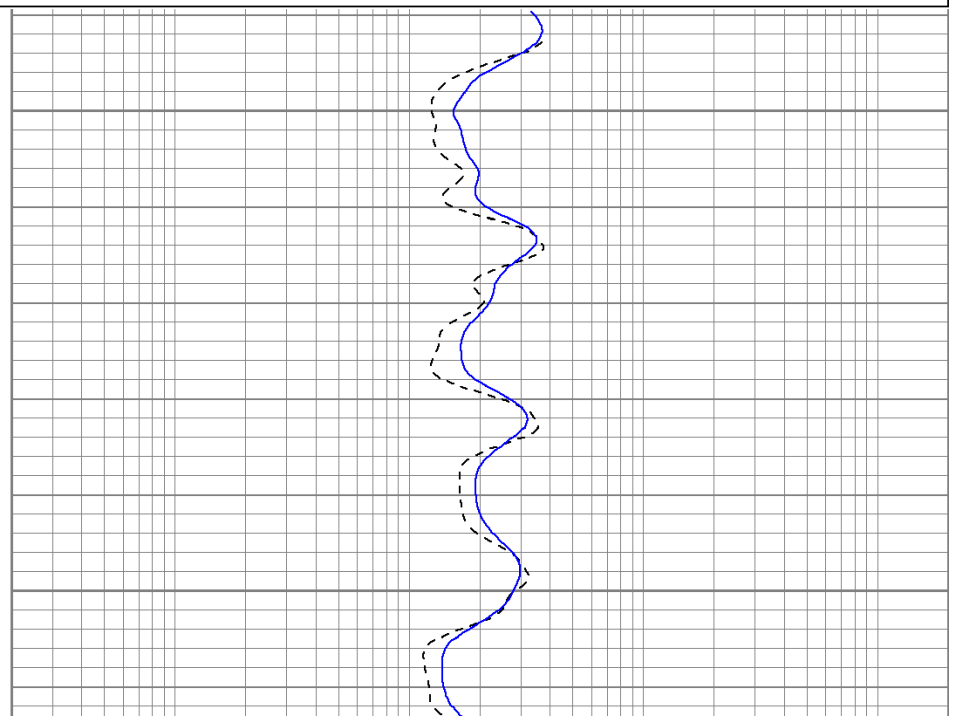
Repeat Pass

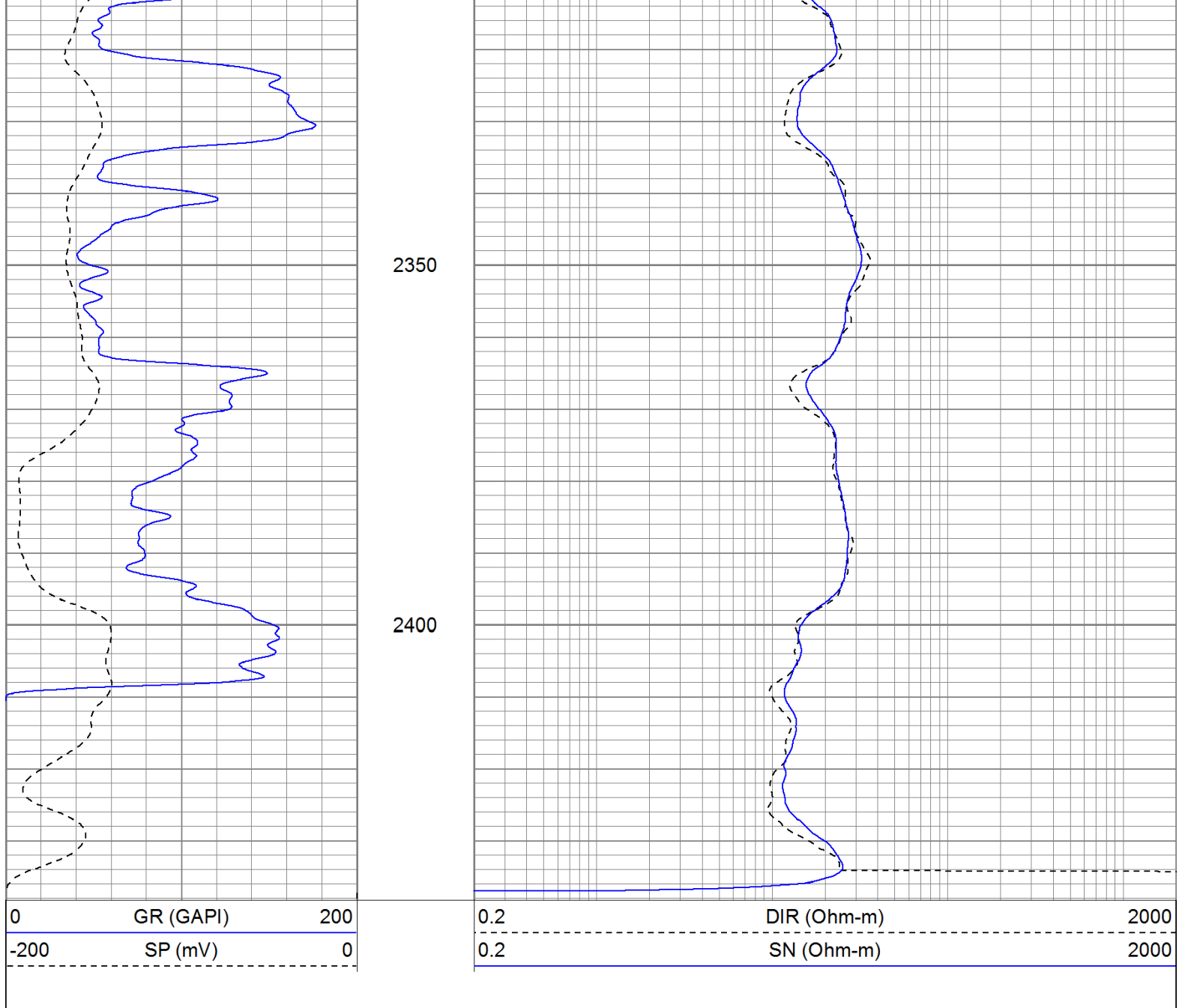
Database File: talontr.db
 Dataset Pathname: pass1.1
 Presentation Format: iel
 Dataset Creation: Mon Aug 01 01:27:53 2011 by Calc Open-Cased 110302
 Charted by: Depth in Feet scaled 1:240



2250






2300





Calibration Report				
Database File:	talontr.db			
Dataset Pathname:	pass1			
Dataset Creation:	Mon Aug 01 00:17:51 2011 by Log Open-Cased 110302			
Induction Tool Calibration Report				
Serial Number:	903			
Tool Model:	Probe			
Downhole Cal Performed:	Sat Jun 18 15:02:12 2011			
Surface Cal Performed:	Sat Jun 18 17:40:00 2011			
After Survey Verification Performed:				
Surface Calibration:	Air	Loop		
Conductivity Reference:	0.000	500.000	mmho	
Conductivity Reading:	-0.045	0.642	V	
Internal Reference:	Zero	Cal		
Conductivity Reference:	0.000	500.000	mmho	
Conductivity Reading:	0.006	0.641	V	
Downhole Calibration:	Internal Zero	Internal Cal		
Conductivity Reference:	-0.702	499.904	mmho	
Conductivity Reading:	-0.082	503.319	V	

Calibrator Value:	1.0	GAPI
Background Reading:	0.0	cps
Calibrator Reading:	1.0	cps
Sensitivity:	0.6500	GAPI/cps

Sensor	Offset (ft)	Schematic	Description	Len (ft)	OD (in)	Wt (lb)
GR	29.58		None	0.75	1.50	5.00
			GR-2.75POH (804) Probe 2.75" Probe Open Hole Gamma Ray	3.73	2.75	43.00
NEU	24.04		NEU-2.75POH (803) Probe Epithermal	4.75	2.75	58.00
LSD DCAL SSD	16.21		CDL-2.75POH (901) Probe	8.43	2.75	106.00
	15.94					
	15.69					
DIC	6.24		IEL-Probe (903)	13.46	2.75	93.00
SP SN	2.25					
	1.71					

Dataset:	talontr.db: field/well/run1/pass1
Total Length:	31.11 ft
Total Weight:	305.00 lb
O.D.	2.75 in

