

**CEMENT BOND
LOG**

Company Pioneer Natural Res.
Well Talon 34-25 Tr
Field Purgatoire River
County Las Animas
State Colorado

Company Pioneer Natural Resources
Well Talon 34-25 Tr
Field Purgatoire River
County Las Animas State Colorado

Location: API #: 05 071 09847 00

753' FSL & 1556' FEL

SEC 25 TWP 32S RGE 68W

Permanent Datum Ground Level Elevation 8133'
Log Measured From Kelly Bushing 4' Above G L
Drilling Measured From Kelly Bushing

Elevation
K.B. 8133'
D.F.
G.L. 8133'

Date 8-6-11

Run Number	One
Depth Driller	2441'
Depth Logger	2384'
Bottom Logged Interval	2382'
Top Log Interval	Surf.
Open Hole Size	8 3/4
Type Fluid	Water
Density / Viscosity	///
Max. Recorded Temp.	///
Estimated Cement Top	86'
Time Well Ready	Portable Mast
Time Logger on Bottom	11:00 A.M.
Equipment Number	440
Location	Trinidad
Recorded By	Sisneros
Witnessed By	Terry Beasley

Borehole Record		Tubing Record				
Bit	From	To	Size	Weight	From	To

Casing Record	Size	Wgt/Ft	Top	Bottom
Surface String	9 5/8			1106'
Prot. String				
Production String	5 1/2			TD
Liner				

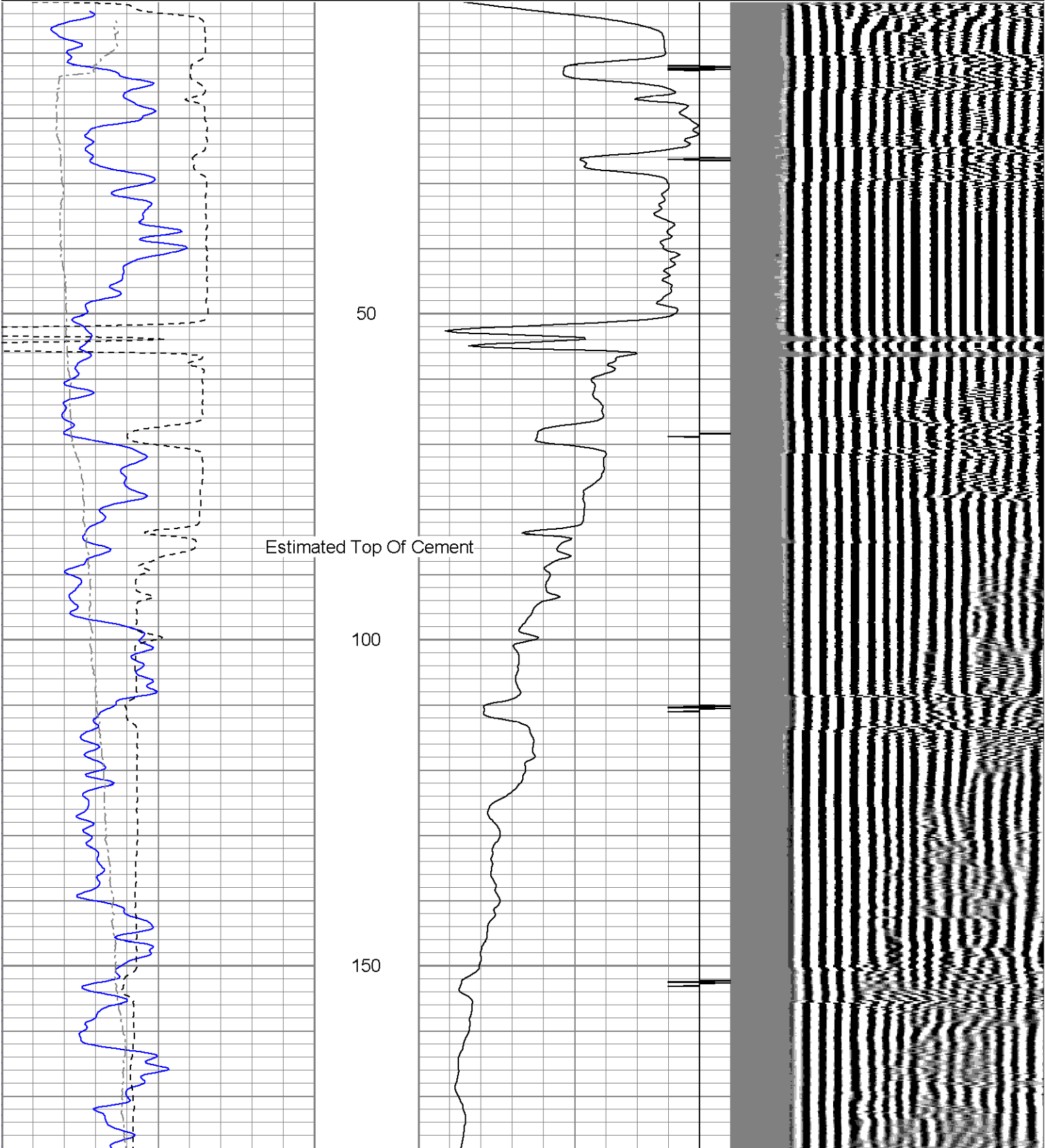
<<< Fold Here >>>

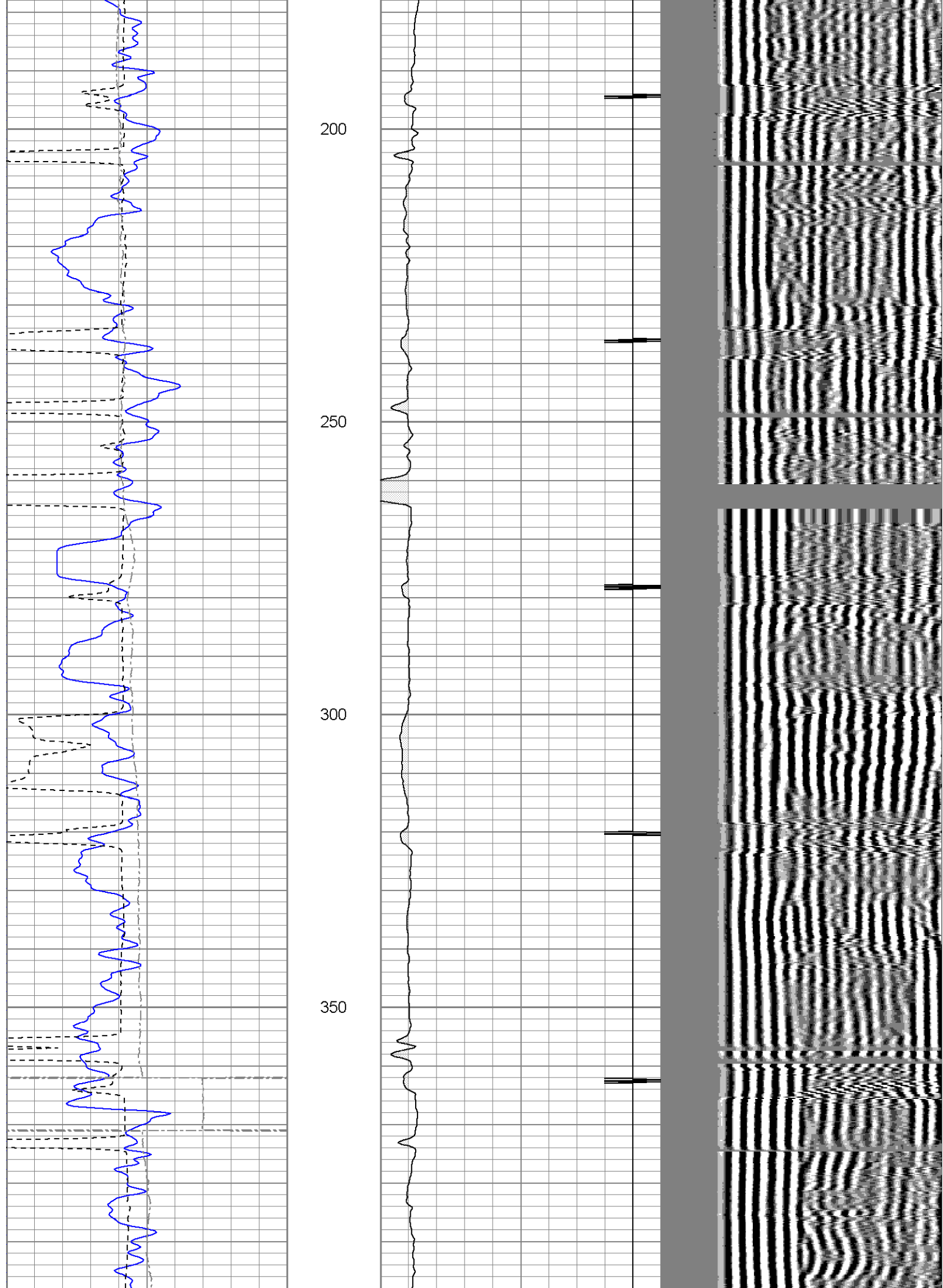
All interpretations are opinions based on inferences from electrical or other measurements and we cannot and do not guarantee the accuracy or correctness of any interpretation, and we shall not, except in the case of gross or willful negligence on our part, be liable or responsible for any loss, costs, damages, or expenses incurred or sustained by anyone resulting from any interpretation made by any of our officers, agents or employees. These interpretations are also subject to our general terms and conditions set out in our current Price Schedule.

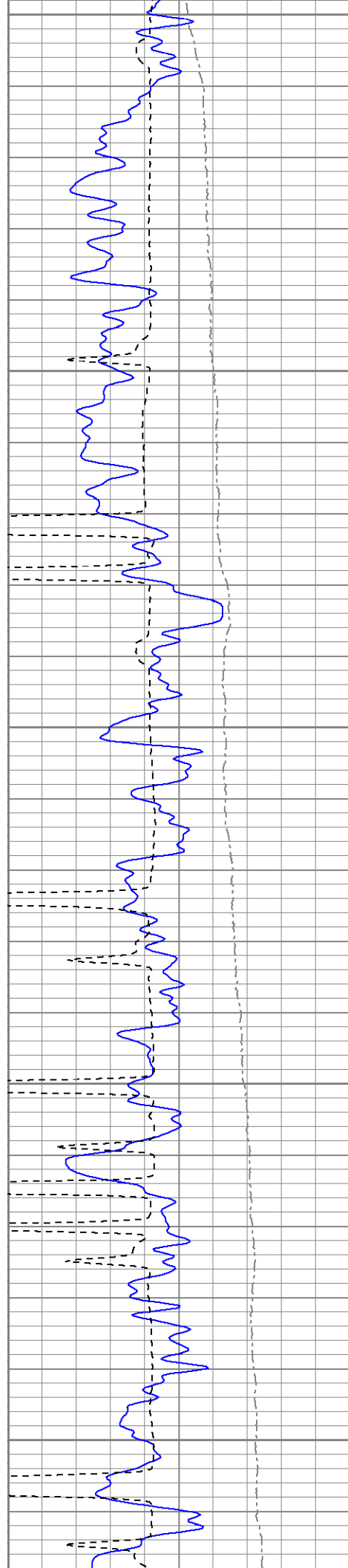
Comments

Log ran under 1000 PSI.
Directions:
Wet Canyon to San Pablo, turn left up Wilderness Ridge RD.
stay on main rd and past the Michelle location, at 4 way, go straight
down hill, at Y go left and dead end on location, first on the pad to the right.

0	GR (GAPI)	200	18	CCL	-2	200	VDL	1200
200	GR (GAPI)	400	0	AMP3 (mV)	100			
400	TT3 (usec)	200						
0	DEVI (°)	10						







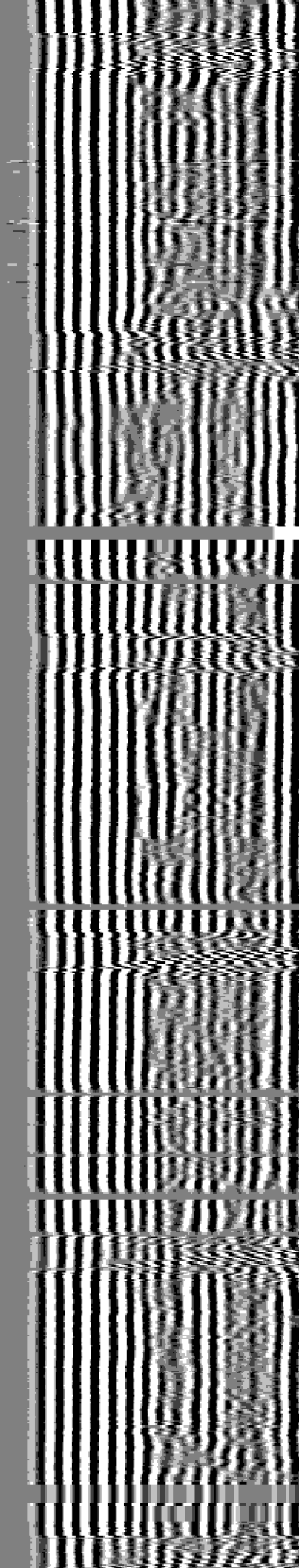
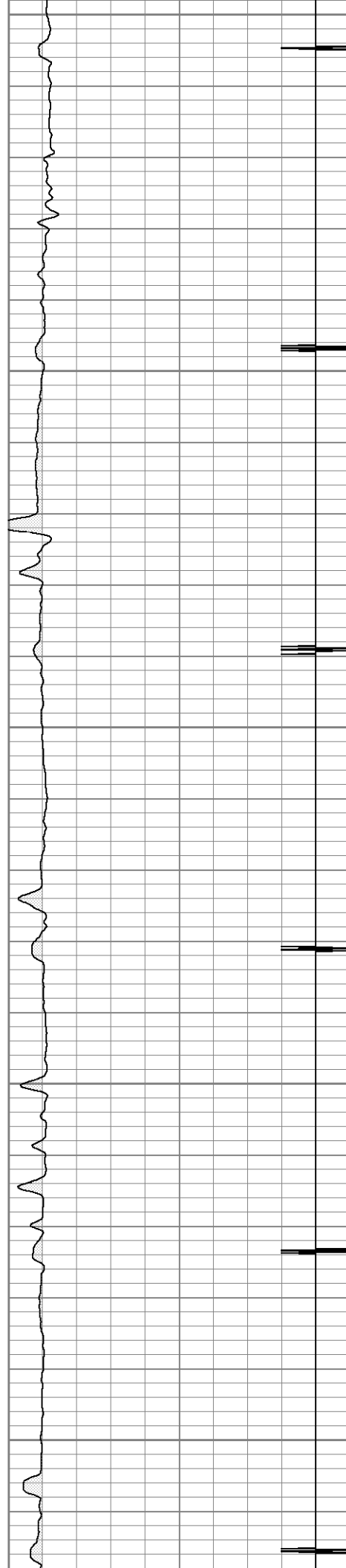
400

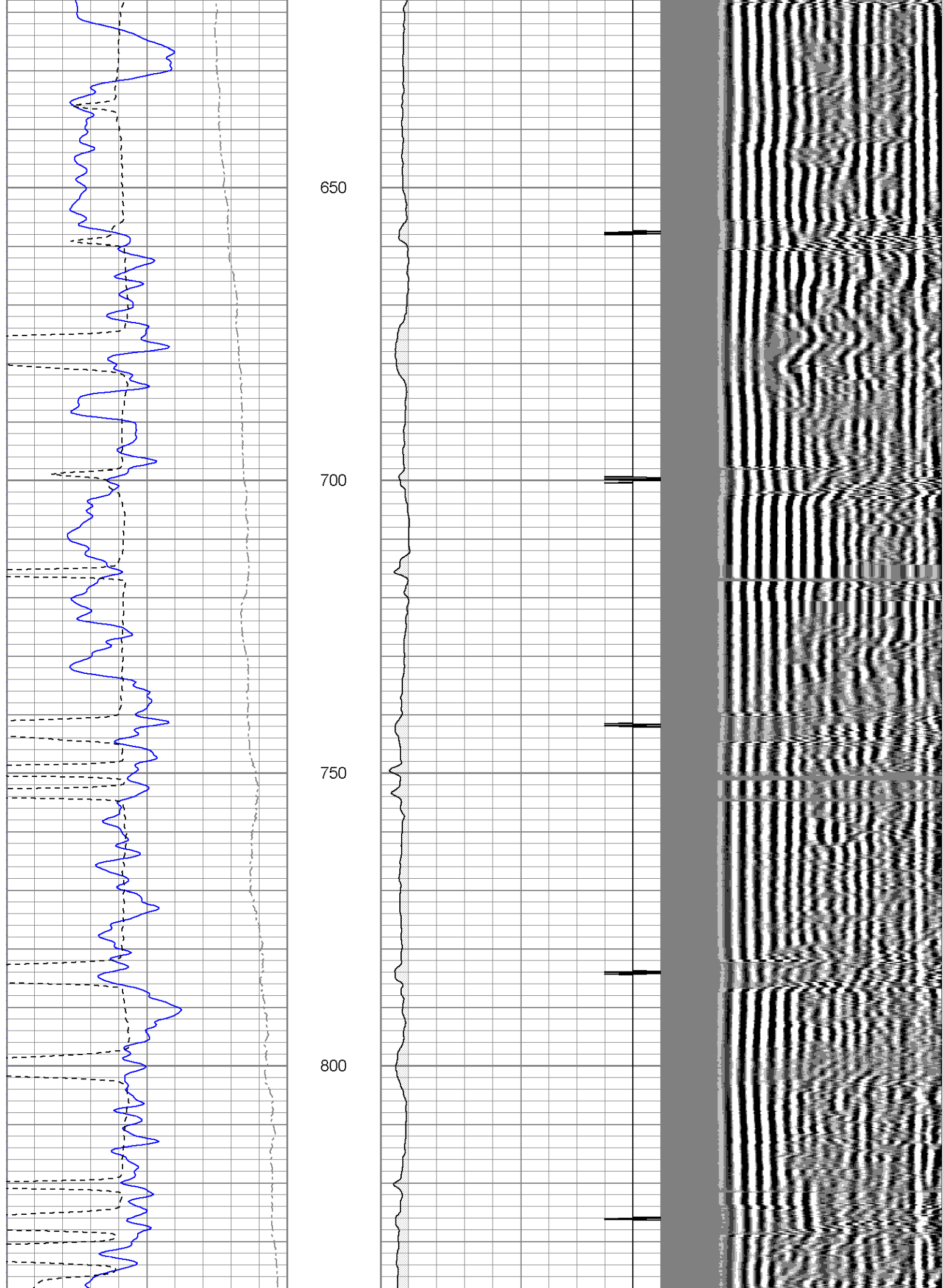
450

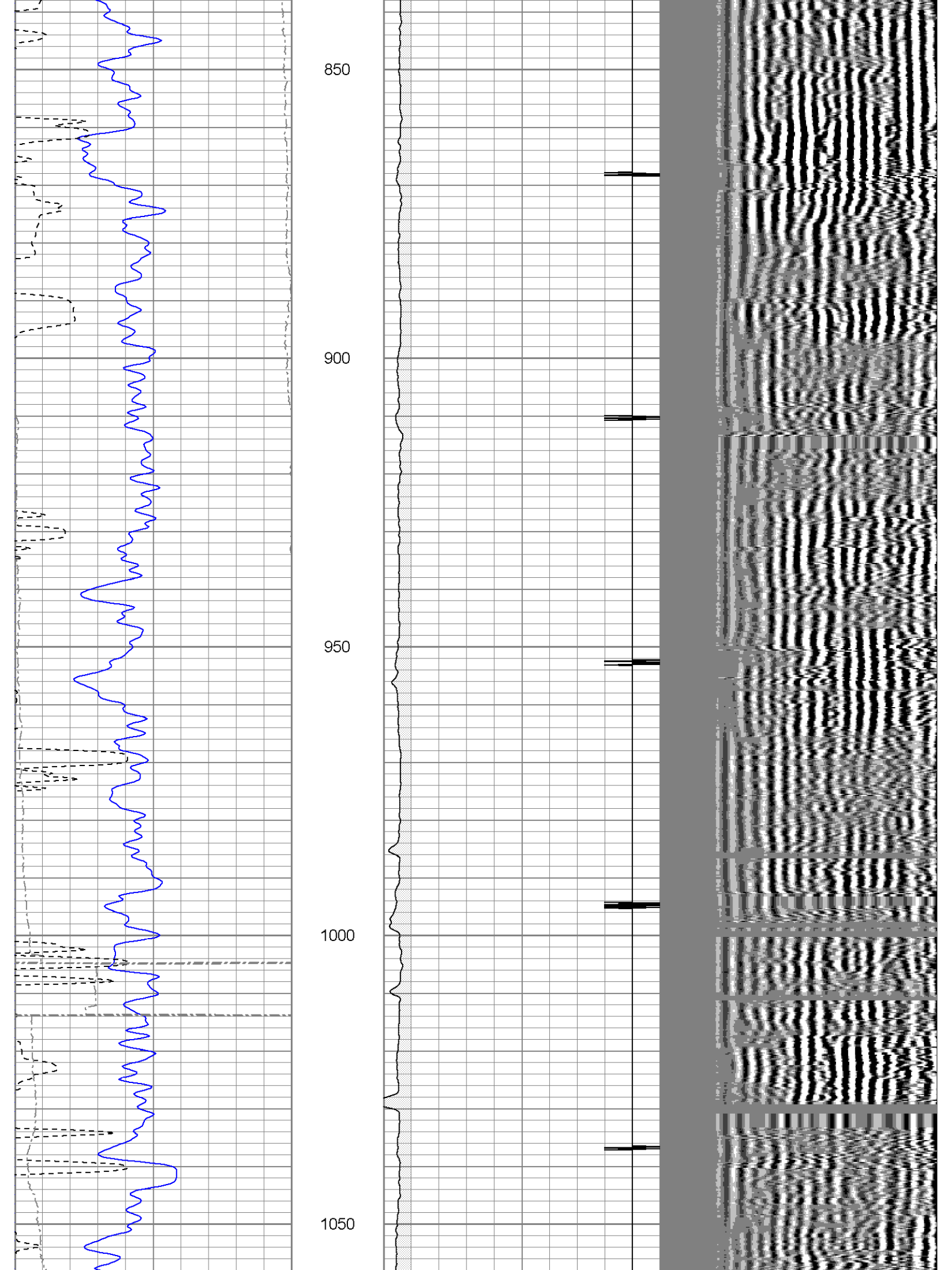
500

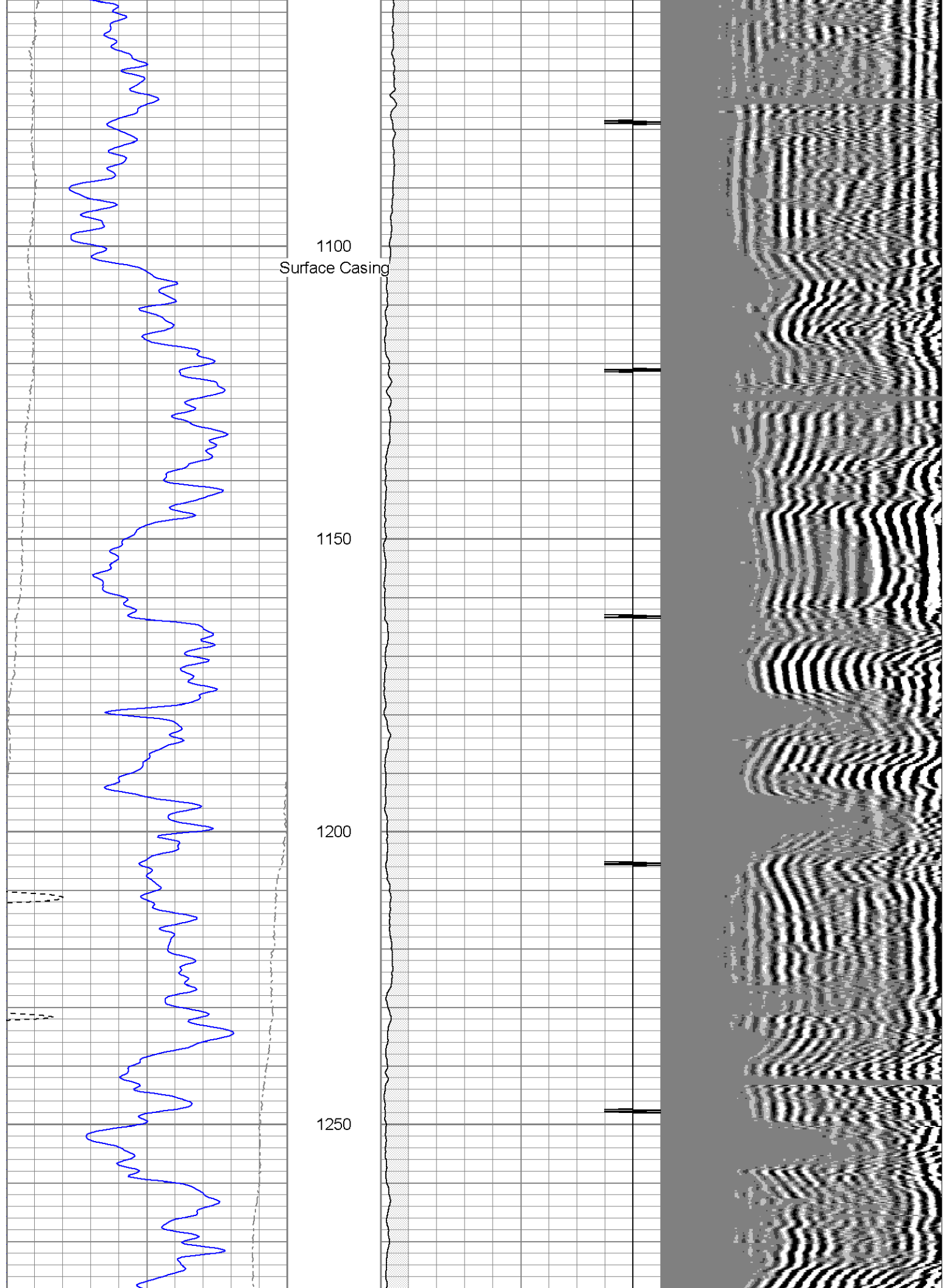
550

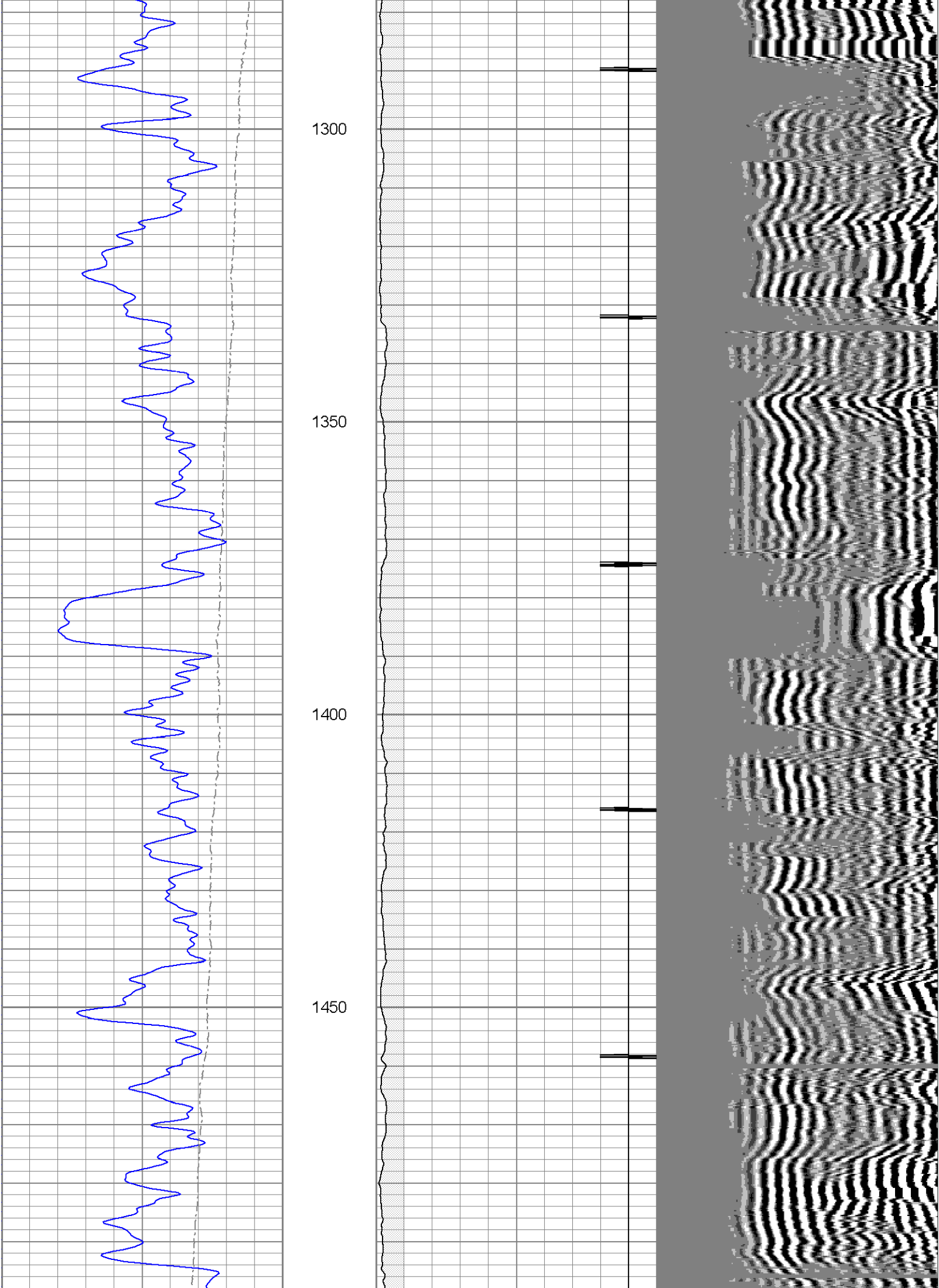
600

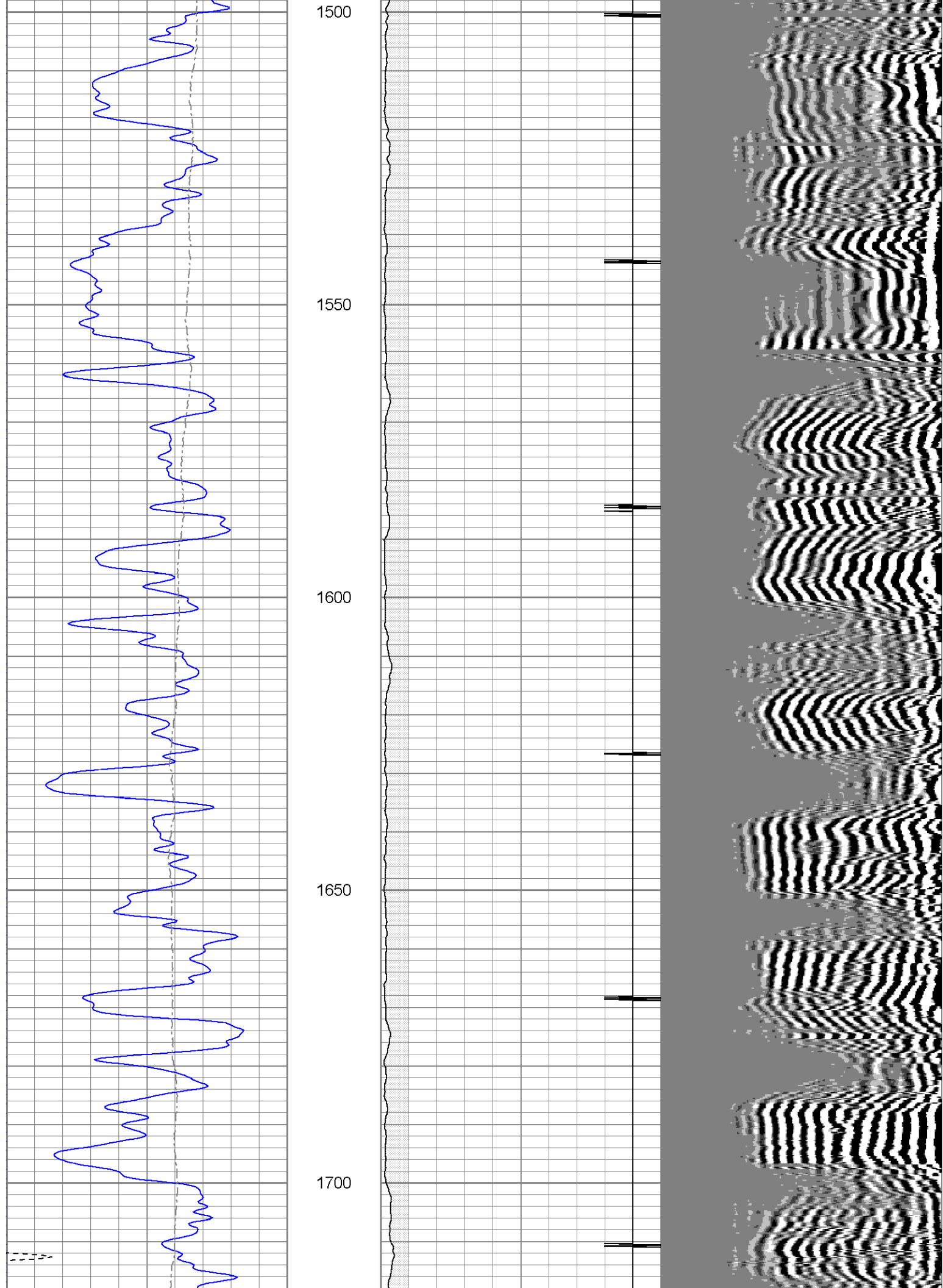


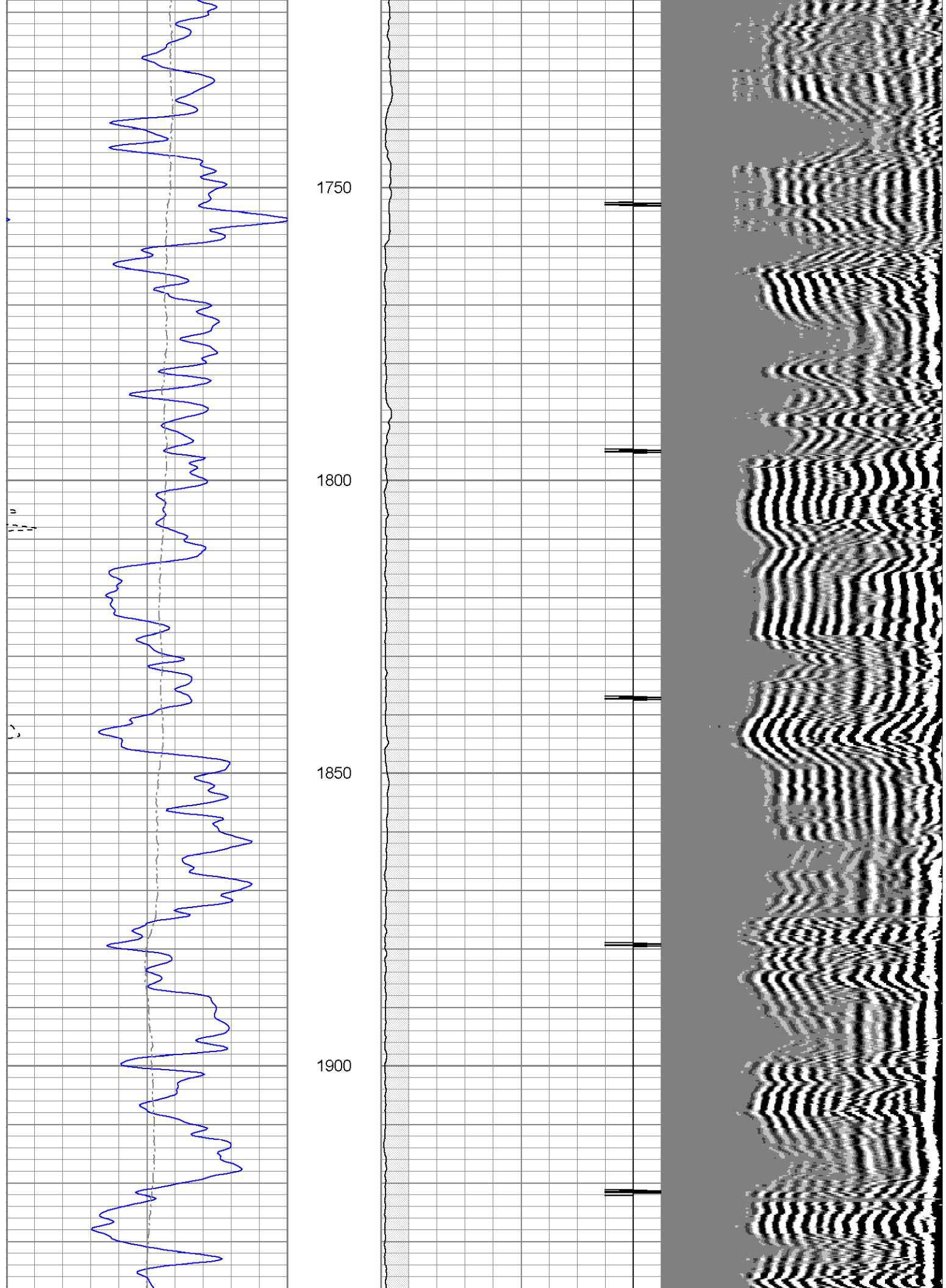


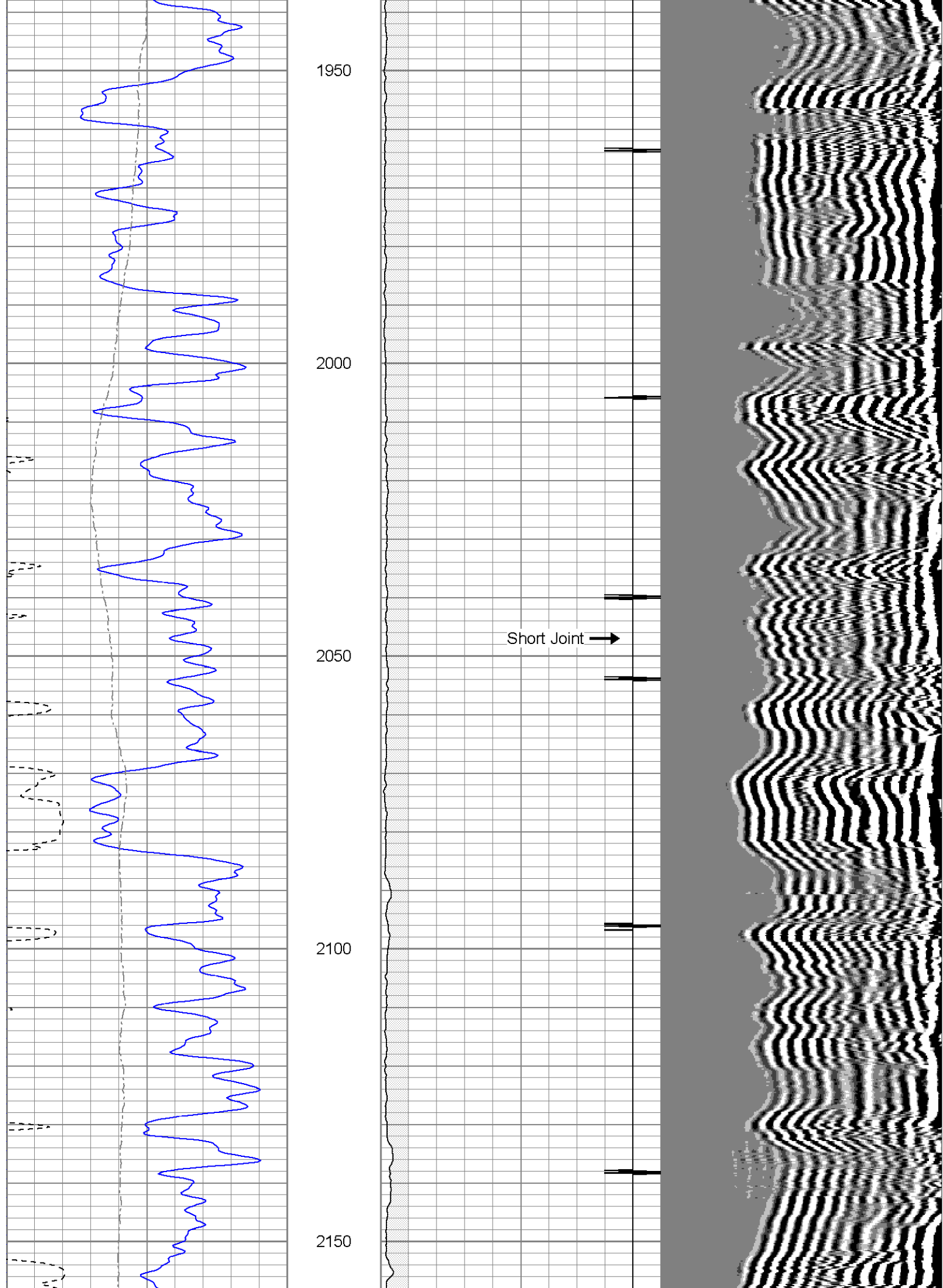


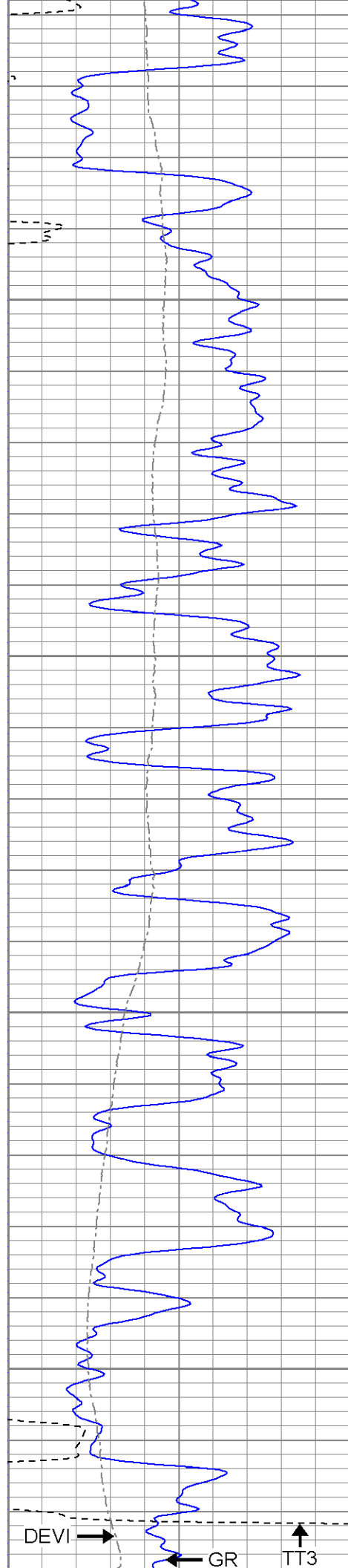










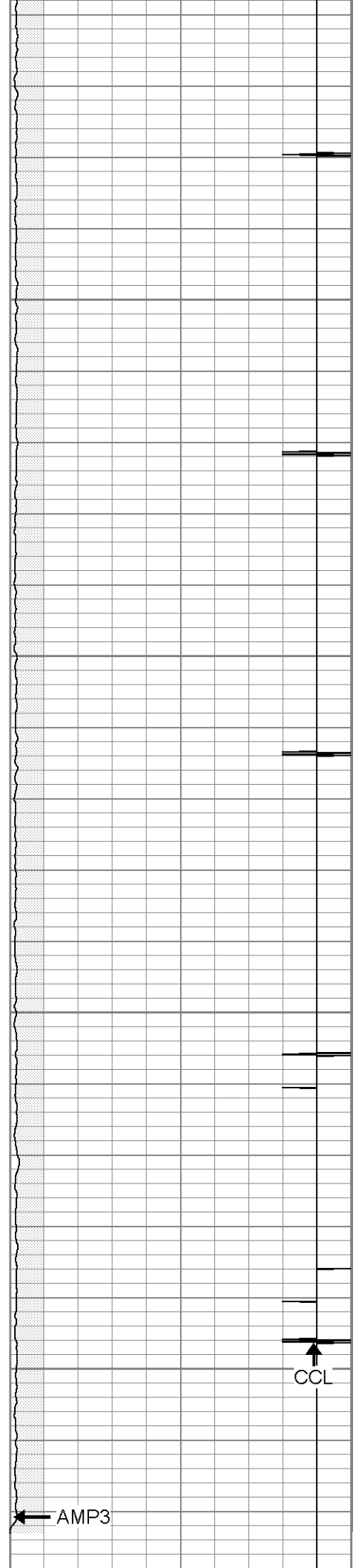


2200

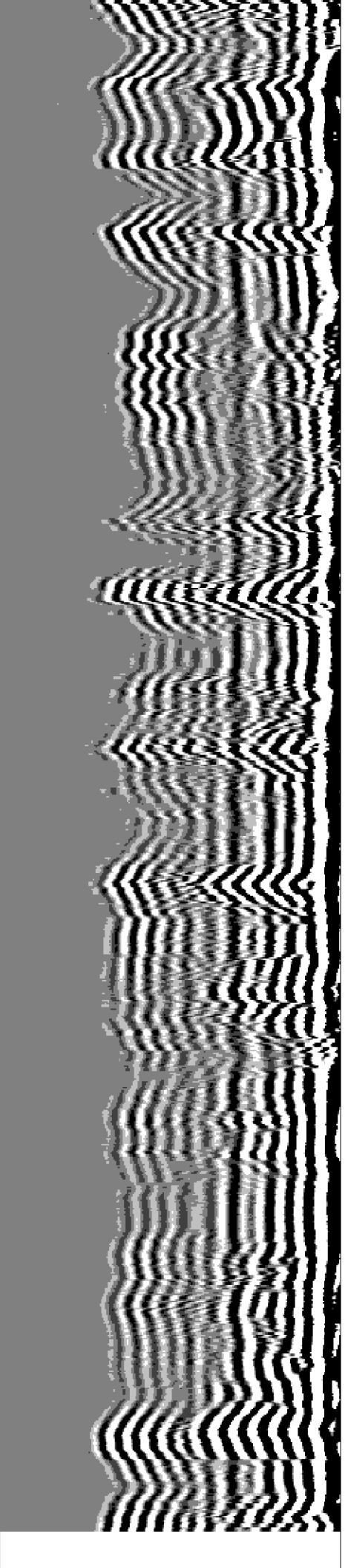
2250

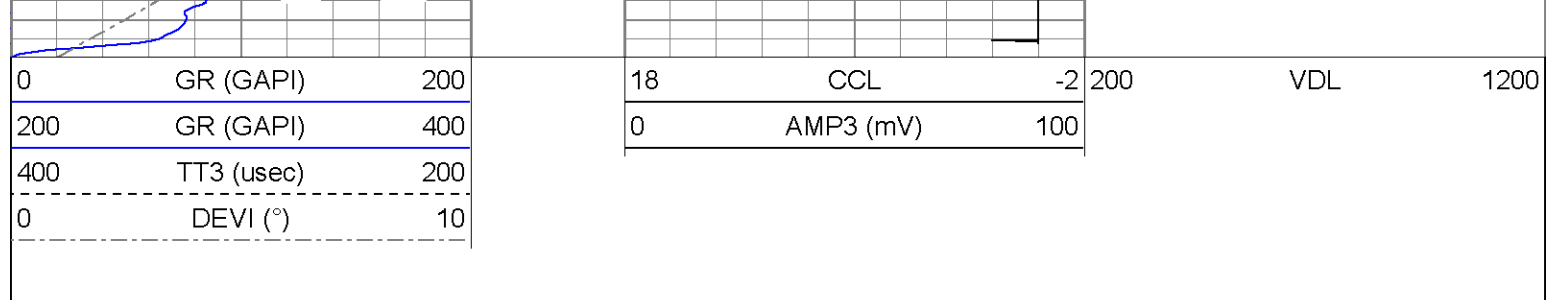
2300

2350



CCL

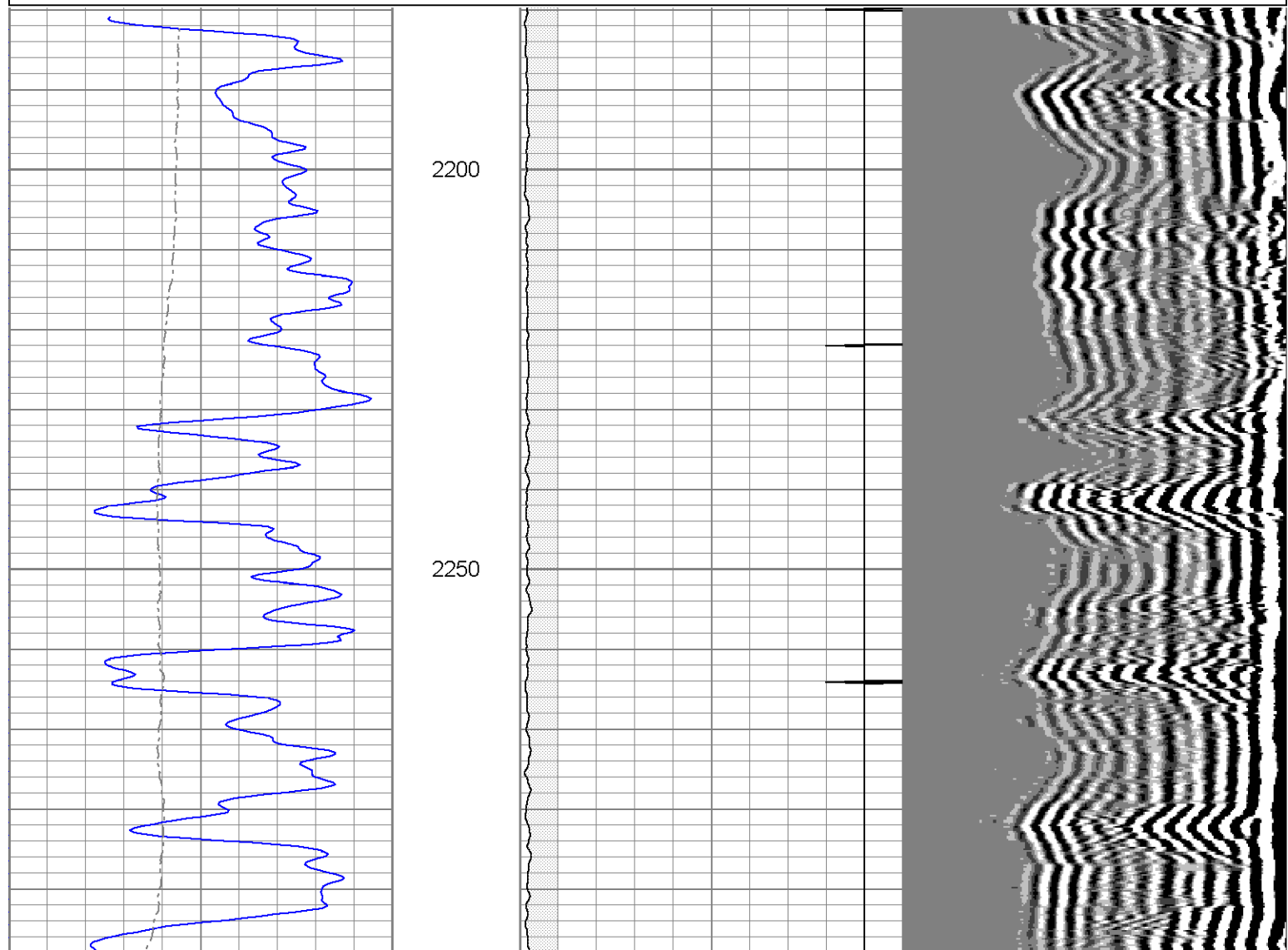
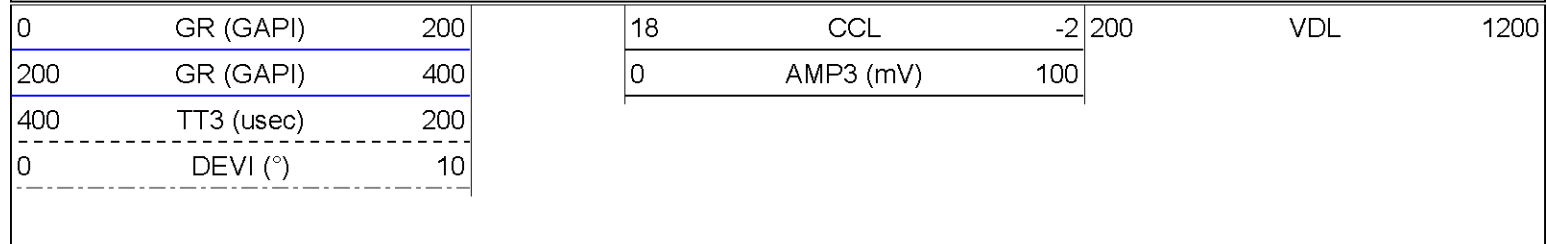


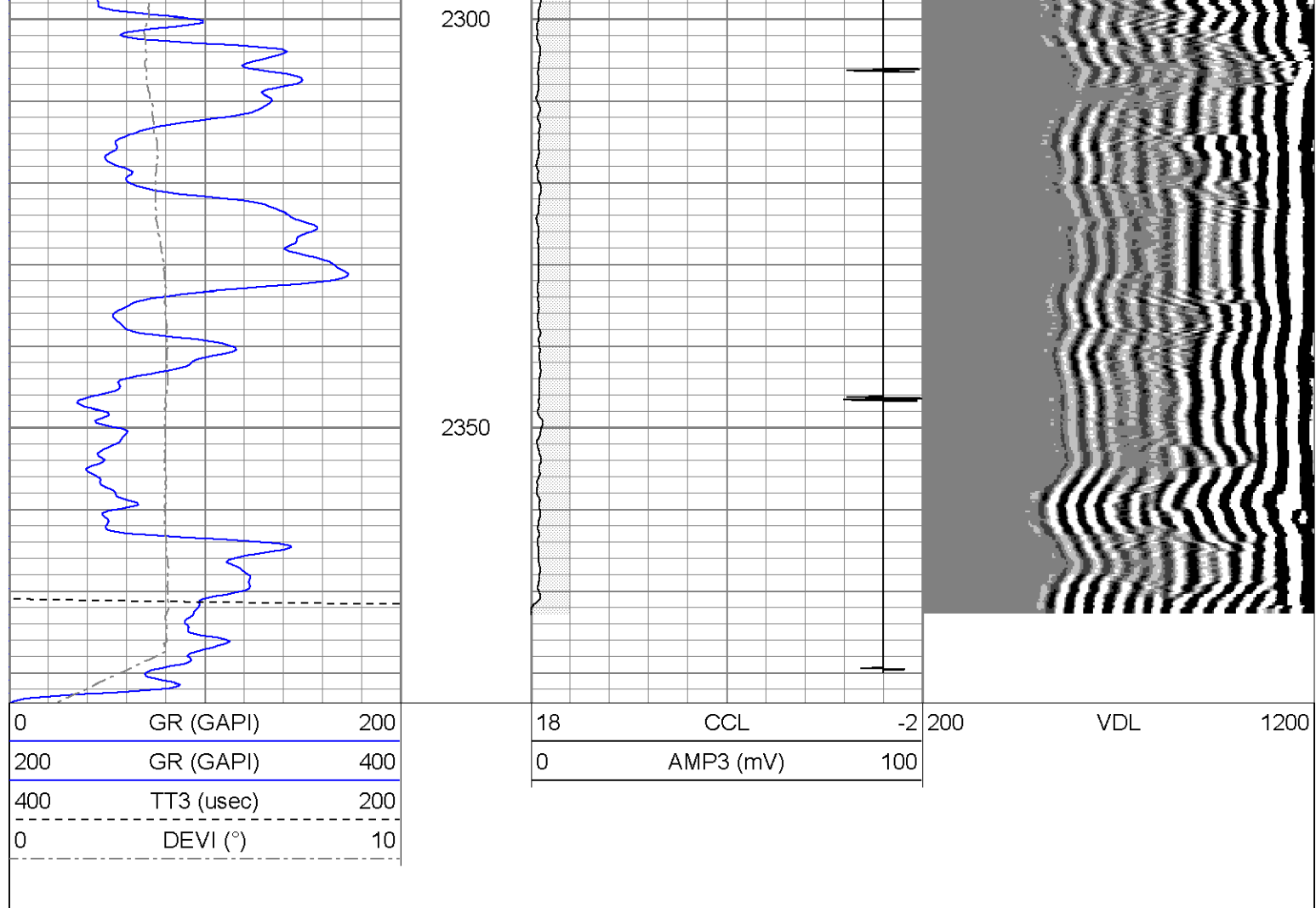


The Perforators
LLC

Repeat Pass

Database File: talontr8611b_backup1.db
Dataset Pathname: pass4
Presentation Format: cbl
Dataset Creation: Wed Jan 01 01:20:29 2003 by Log Open-Cased 071220
Charted by: Depth in Feet scaled 1:240





Calibration Report					
Database File:	talontr8611b_backup1.db				
Dataset Pathname:	pass1				
Dataset Creation:	Wed Jan 01 00:44:49 2003 by Log Open-Cased 071220				
Gamma Ray Calibration Report					
Serial Number:	080616				
Tool Model:	275D_INC				
Performed:	Sun Jun 13 14:33:21 1993				
Calibrator Value:	1.0	GAPI			
Background Reading:	0.0	cps			
Calibrator Reading:	1.0	cps			
Sensitivity:	1.0000	GAPI/cps			
Inclinometer Calibration Report					
Performed:	Tue Jul 08 09:40:49 2008				
	Low Read.	High Read.	Low Ref.	High Ref.	
X Accelerometer	-3583.40	3594.20	-1.00	1.00	gee
Y Accelerometer	-3588.80	3532.80	-1.00	1.00	gee
Z Accelerometer					

Cement Bond Log Calibration Report

Serial Number:	080201		
Tool Model:	PROBEDIGITALCBL		
Performed:	Wed Jan 01 00:42:21 2003		
Depth:	77.0518	ft	
Casing Diameter:	5.5	in	
	3' Spacing	5' Spacing	
Signal Zero:	1	0	mV
Calibrated Amplitude:	85	85	mV
Reading at Signal Zero:	0.00690918	0.00671387	V
Reading in Free Pipe:	0.550928	0.550854	V
Gain:	154.406	156.21	
Offset:	-0.0668222	-1.04877	

Sensor	Offset (ft)	Schematic	Description	Len (ft)	OD (in)	Wt (lb)
			CHD-None (0)	0.75	1.44	5.00
WVF3	12.04		CBL-PROBEDIGITALCBL (080201)	8.75	2.75	106.50
WVF5	11.04		PROBE DIGITAL CBL			
			CENT-Star (star1)	0.29	1.69	0.50
			CENT-2 3/4"Probe (Probe)	3.00	1.69	25.00
			Centralizer with large springs			
CCL	3.50		GR-275D_INC (080616)	4.50	2.75	50.00
ACCX	1.83		2-3/4" GR-CCL with Inclination			
ACCY	1.83					
ACCZ	1.83					
GR	0.83					

Dataset:	talontr8611b_backup1.db: field/well/run1/pass1
Total Length:	17.29 ft
Total Weight:	187.00 lb
O.D.	2.75 in