



Copyright © 2011 by Canrig Drilling Technology, Ltd.

**Houston, TX**  
(281) 784-5500  
**Bakersfield, CA**  
(661) 328-1595  
**New Iberia, LA**  
(337) 364-2322  
**Anchorage, AK**  
(907) 561-2465

## MUDLOG MD

<b>COMPANY</b>	EXXONMOBIL CORP.
<b>WELL</b>	PCU 296-6B10
<b>FIELD</b>	PICEANCE CREEK
<b>REGION</b>	ROCKY MOUNTAIN
<b>COORDINATES</b>	LAT. 39.905339000 N LONG. 108.205216000 W
<b>ELEVATION</b>	GL: 7360.8' KB: 7387.8'
<b>COUNTY, STATE</b>	RIO BLANCO. CO
<b>API INDEX</b>	051031153300
<b>SPUD DATE</b>	07-30-2011
<b>CONTRACTOR</b>	HELMRICH AND PAYNE
<b>CO. REP.</b>	RICHARD GOODMAN
<b>RIG/TYPE</b>	RIG 215 / FLEX 3
<b>LOGGING UNIT</b>	UNIT 051
<b>GEOLOGISTS</b>	G.BAKER, D.CLAAR B. JOHANNING
<b>ADD. PERSONS</b>	K. WALLANDER D. EVANS
<b>CO. GEOLOGIST</b>	W. HOFFMAN

### LOG INTERVAL

**DEPTHS:** 142' TO 4406'  
**DATES:** 07/31/2011 TO 08/09/2011  
**SCALE:** 1" = 100'

### CASING DATA

16" AT 142'  
AT  
AT  
AT

### HOLE SIZE

14.75" TO 4406'  
TO  
TO  
TO

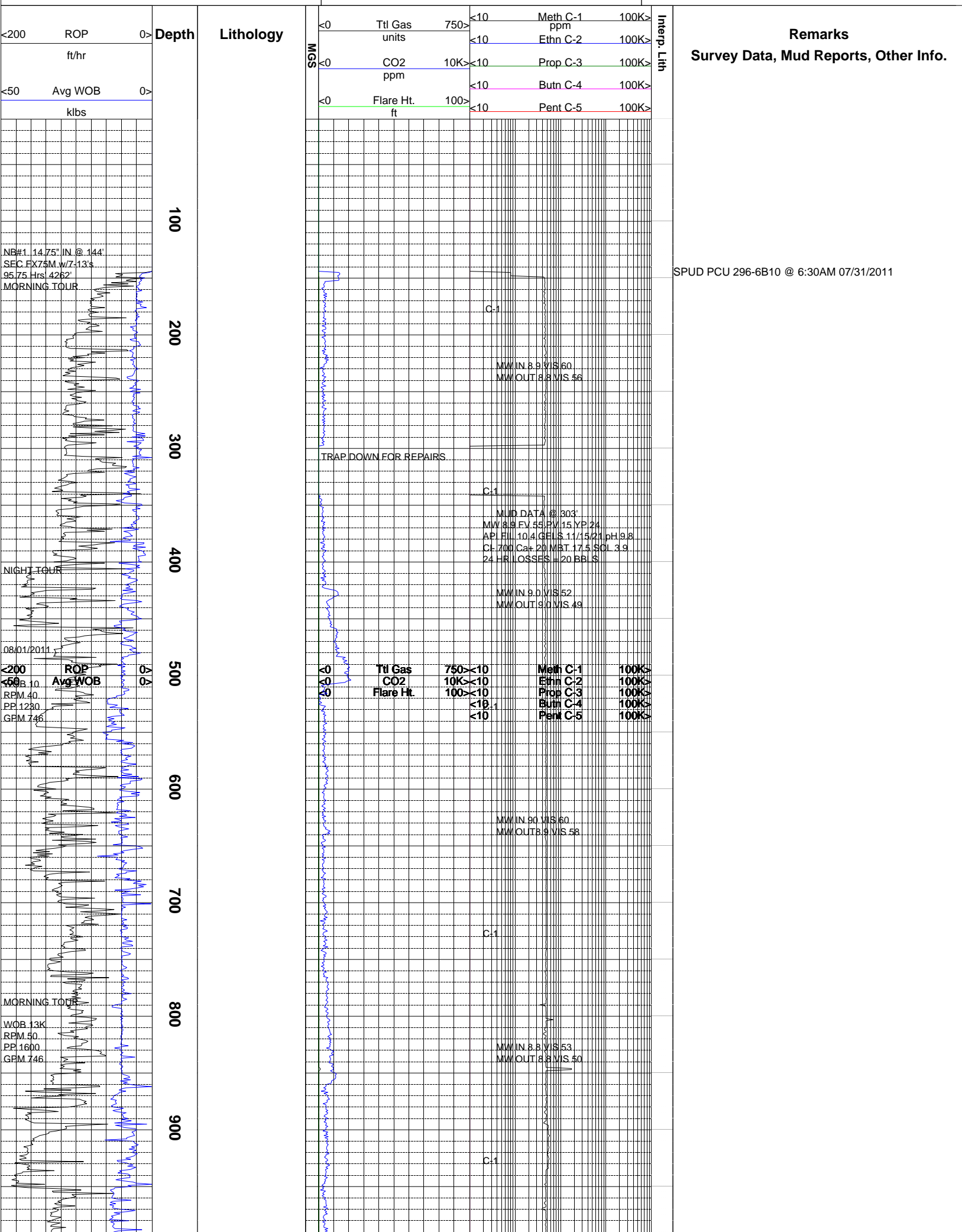
### MUD TYPES

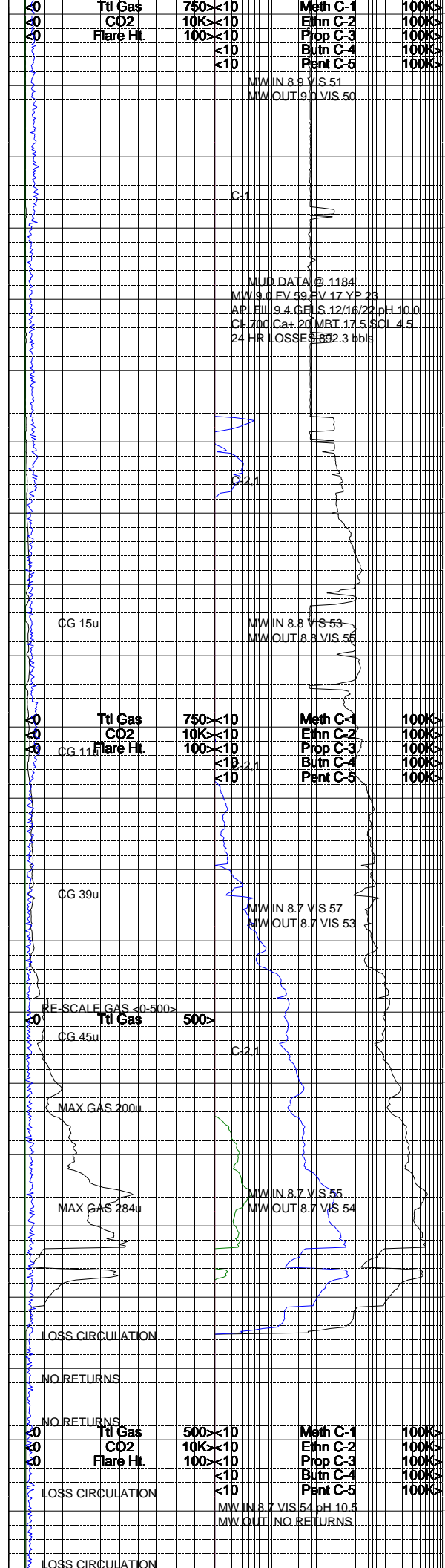
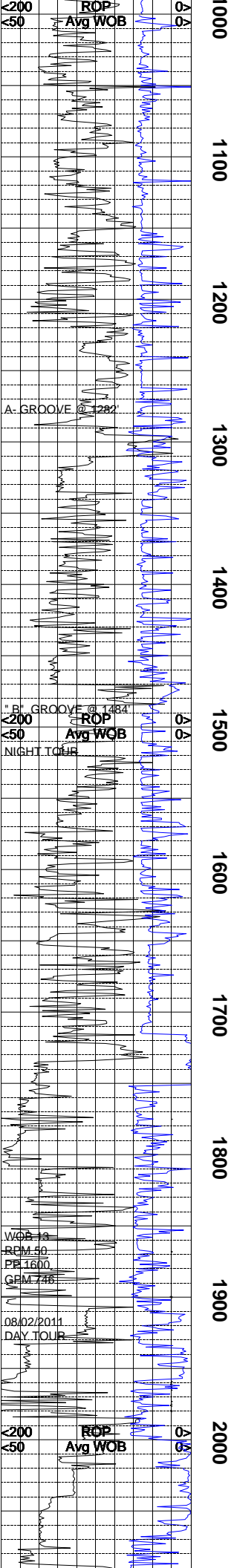
SPUD MUD TO 4406'  
LSND TO  
TO  
TO

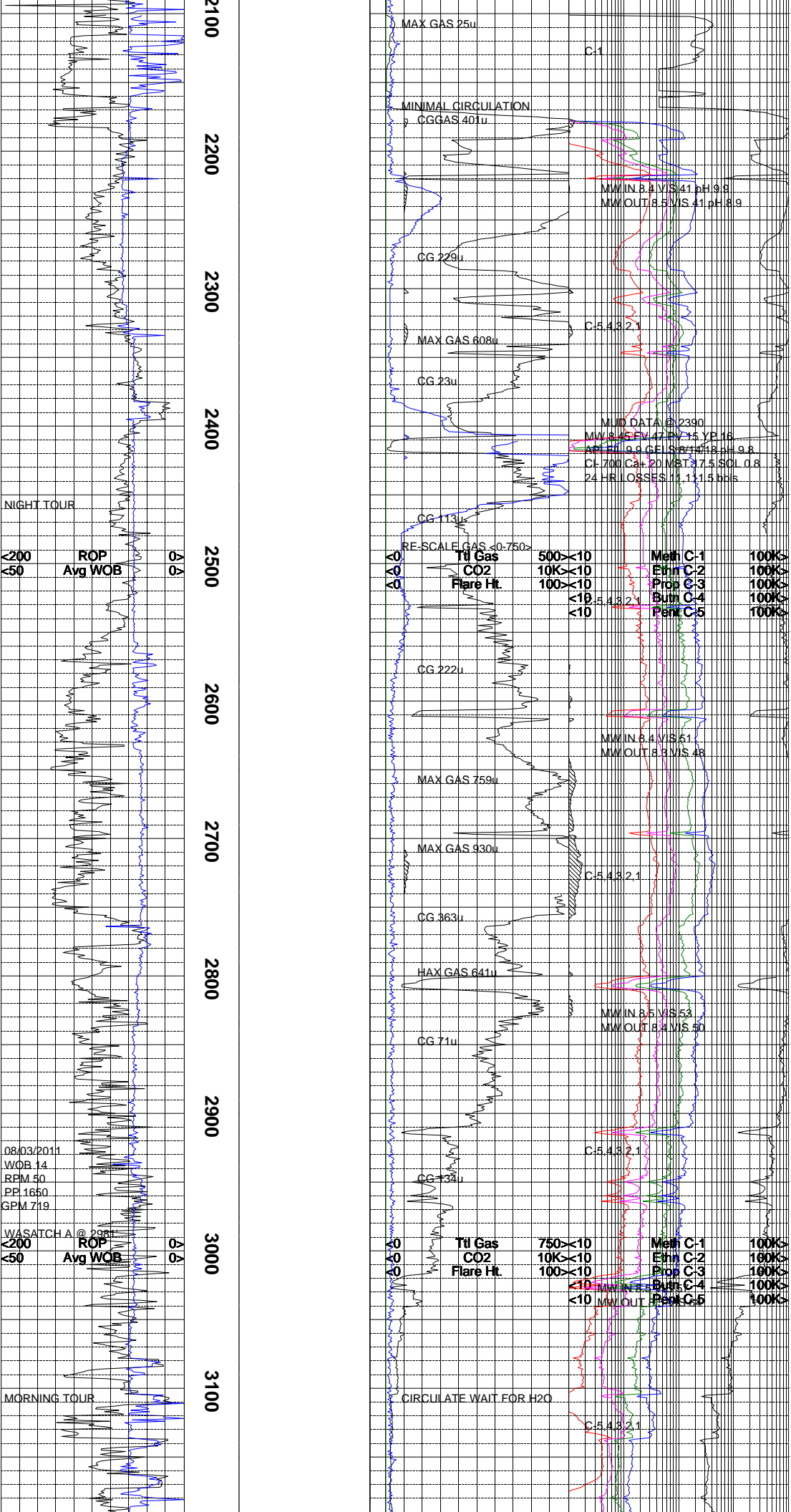
### ABBREVIATIONS

<i>NB</i> NEWBIT	<i>PV</i> PLASTIC VISCOSITY	<i>LC</i> LOST CIRCULATION
<i>RRB</i> RERUN BIT	<i>YP</i> YIELD POINT	<i>CO</i> CIRCULATE OUT
<i>CB</i> CORE BIT	<i>FL</i> FLUID LOSS	<i>NR</i> NO RETURNS
<i>WOB</i> WEIGHT ON BIT	<i>CL</i> PPM CLORIDE ION	<i>TG</i> TRIP GAS
<i>RPM</i> ROTARY REV/MIN	<i>Rm</i> MUD RESISTIVITY	<i>SG</i> SURVEY GAS
<i>PP</i> PUMP PRESSURE	<i>Rmf</i> FILTRATE RESISTIVITY	<i>WG</i> WIPER GAS
<i>SPM</i> STROKES/MIN	<i>PR</i> POOR RETURNS	<i>CG</i> CONNECTION GAS
<i>MW</i> MUD WEIGHT	<i>LAT</i> LOGGED AFTER TRIP	
<i>VIS</i> FUNNEL VISCOSITY	<i>LAS</i> LOGGED AFTER SURVEY	

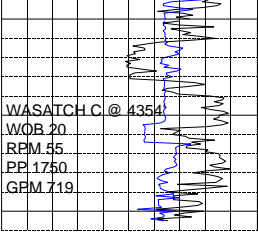




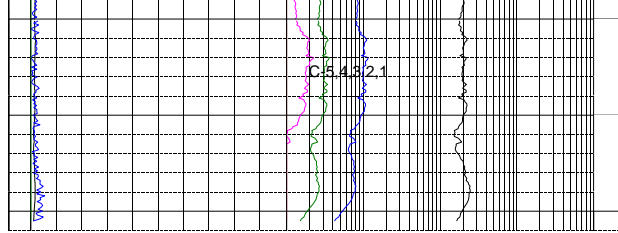








4300  
4400



REACH SURFACE CASING TD OF 4407' @  
20:58 HRS ON 8/04/2011

PLUG AND ABANDON ON 8/09/2011

The log data, interpretations and recommendation provided by Canrig are inferences and assumptions based on measurements of drilling fluids. Such inferences and assumptions are not infallible and reasonable professionals may differ. Canrig does not represent or warrant the accuracy, correctness or completeness of any log data, interpretations, recommendations or information provided by Canrig, its officers, agents or employees. Canrig does not and cannot guarantee the accuracy of any such interpretation of the log data, interpretations or recommendations and Company is fully responsible for all decisions and actions it takes based on such log data, interpretations and recommendations.