



Copyright © 2011 by Canrig Drilling Technology, Ltd.

Houston, TX
(281) 784-5500
Bakersfield, CA
(661) 328-1595
New Iberia, LA
(337) 364-2322
Anchorage, AK
(907) 561-2465

Drilling Dynamics Log

COMPANY	EXXONMOBIL CORP.
WELL	PCU 296-6B10
FIELD	PICEANCE CREEK
REGION	ROCKY MOUNTAIN
COORDINATES	LAT. 39.905339000 N LONG. 108.205216000 W
ELEVATION	GL: 7360.8' KB: 7387.8'
COUNTY, STATE	RIO BLANCO. CO
API INDEX	051031153300
SPUD DATE	07-30-2011
CONTRACTOR	HELMRICH AND PAYNE
CO. REP.	RICHARD GOODMAN
RIG/TYPE	RIG 215 / FLEX 3
LOGGING UNIT	UNIT 051
GEOLOGISTS	G.BAKER, D.CLAAR B. JOHANNING
ADD. PERSONS	K. WALLANDER D. EVANS
CO. GEOLOGIST	W. HOFFMAN

LOG INTERVAL

DEPTHS:	142'	TO	4406'
DATES:	07/31/2011	TO	08/09/2011
SCALE:	1" = 100'		

CASING DATA

16"	AT	142'
	AT	
	AT	
	AT	

MUD TYPES

SPUD MUD	TO	4406'
LSND	TO	
	TO	
	TO	

HOLE SIZE

14.75"	TO	4406'
	TO	
	TO	
	TO	

ABBREVIATIONS

<i>NB</i> NEWBIT	<i>PV</i> PLASTIC VISCOSITY	<i>LC</i> LOST CIRCULATION
<i>RRB</i> RERUN BIT	<i>YP</i> YIELD POINT	<i>CO</i> CIRCULATE OUT
<i>CB</i> CORE BIT	<i>FL</i> FLUID LOSS	<i>NR</i> NO RETURNS
<i>WOB</i> WEIGHT ON BIT	<i>CL</i> PPM CLORIDE ION	<i>TG</i> TRIP GAS
<i>RPM</i> ROTARY REV/MIN	<i>Rm</i> MUD RESISTIVITY	<i>SG</i> SURVEY GAS
<i>PP</i> PUMP PRESSURE	<i>Rmf</i> FILTRATE RESISTIVITY	<i>WG</i> WIPER GAS
<i>SPM</i> STROKES/MIN	<i>PR</i> POOR RETURNS	<i>CG</i> CONNECTION GAS
<i>MW</i> MUD WEIGHT	<i>LAT</i> LOGGED AFTER TRIP	
<i>VIS</i> FUNNEL VISCOSITY	<i>LAS</i> LOGGED AFTER SURVEY	

	ALTERED ZONE
	ANDESITE
	ANHYDRITE
	BASALT
	BENTONITE
	BIOTITIZATION
	BRECCIA
	CALCARENITE
	CALCAREOUS TUFF
	CALCULUTITE
	CARBONATES
	CARBONACEOUS MAT
	CARBONACEOUS SH
	CEMENT CONTAM.
	CHALK
	CRYSTALLINE TUFF
	CHERT - ARGILL

	CHERT - GLASSY
	CHERT - PORCEL
	CHERT - TIGER STRIPE
	CHERT - UNDIFF
	CLAY
	CLAY-MUDSTONE
	CLYST-TUFFACEOUS
	CHLORITIZATION
	COAL
	CONGLOMERATE
	CONGL. SAND
	CONGL. SANDSTONE
	COQUINA
	DACITE
	DIATOMITE
	DIORITE
	DOLOSTONE

	FELSIC SILIC DIKE
	FOSSIL
	GABBRO
	GLASSY TUFF
	GRANITE
	GRANITE WASH
	GRANODIORITE
	GYPSUM
	HALITE
	HORNBL-QTZ-DIO
	IGNEOUS (ACIDIC)
	IGNEOUS (BASIC)
	INTRUSIVES
	KAOLINITIC
	LIMESTONE
	LITHIC TUFF
	MARL - DOLO

	MARL - CALC
	METAMORPHICS
	MUDSTONE
	OBSIDIAN
	PALEOSOL
	PHOSPHATE
	PORCELANITE
	PORCELANEOUS CLYST
	PYRITE
	PYROCLASTICS
	QUARTZ DIORITE
	QUARTZ LATITE
	QUARTZ MONZONITE
	RECRYSTALLIZED CALCITE
	RHYOLITE
	SALT
	SAND

	SANDSTONE
	SANDSTONE-TUFFACEOUS
	SERICITIZATION
	SERPENTINE
	SHALE
	SHALE TUFFACEOUS
	SHELL FRAGMENTS
	SIDERITE
	SILICIFICATION
	SILTSTONE
	SILTST-TUFFACEOUS
	TUFF
	VOLCANICLASTICS SEDS
	VOLCANICS

Lithology

Ttl Gas 750
units
CO2 10K
ppm
Flare Ht. 100
ft

Depth

100

200

300

400

500

600

700

800

900

TRAP DOWN FOR REPAIRS

Ttl Gas 750
CO2 10K
Flare Ht. 100

<150 Avg RPM 0> <200 ROP 0> <400 MSE 0>
ft/hr
<30K Avg Torque 0> <50 Avg WOB 0>
FTLBS klbs

MGS

Remarks
Survey Data, Mud Reports, Other Info.

NB#1 14.75" IN @ 144'
SEC.FX75M.w/7-13's
95.75 Hrs 4262'
MORNING TOUR

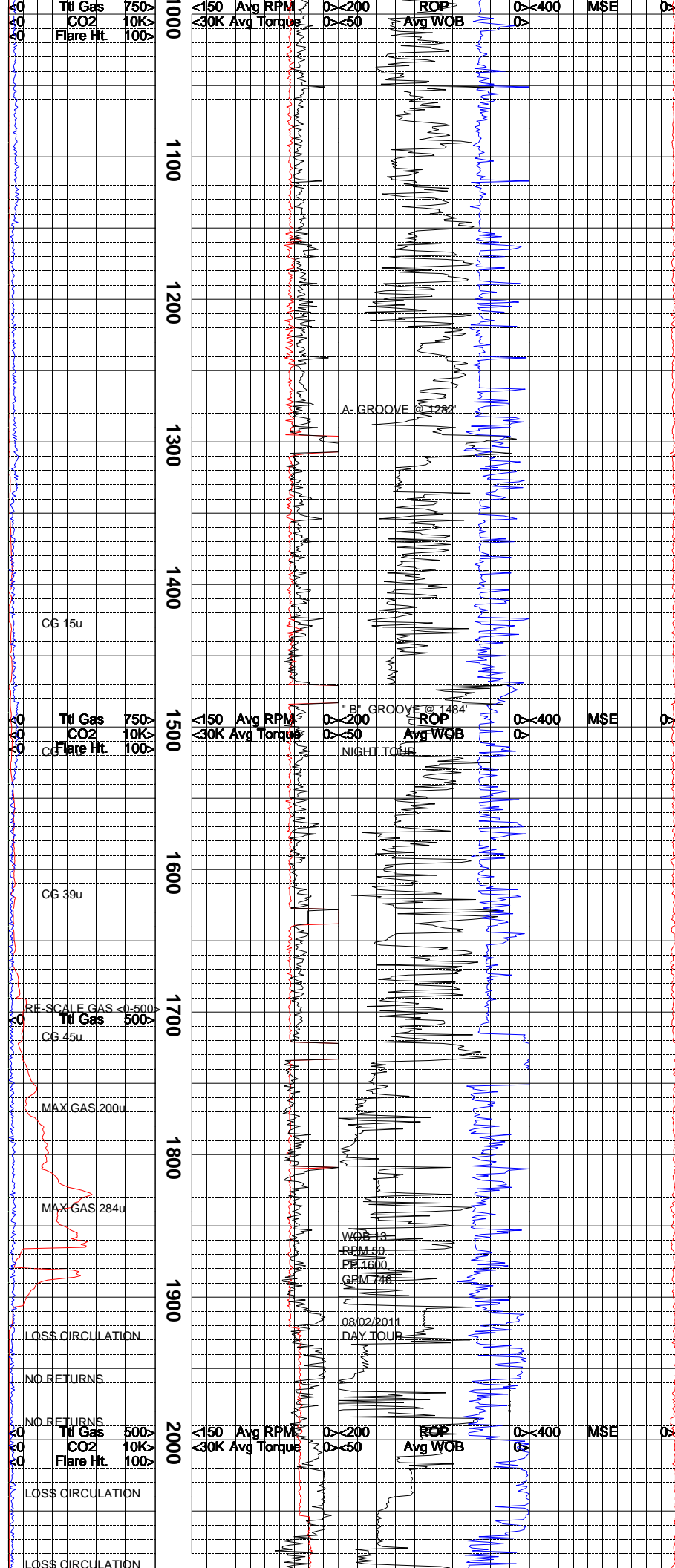
SPUD PCU 296-6B10 @ 6:30AM 07/31/2011

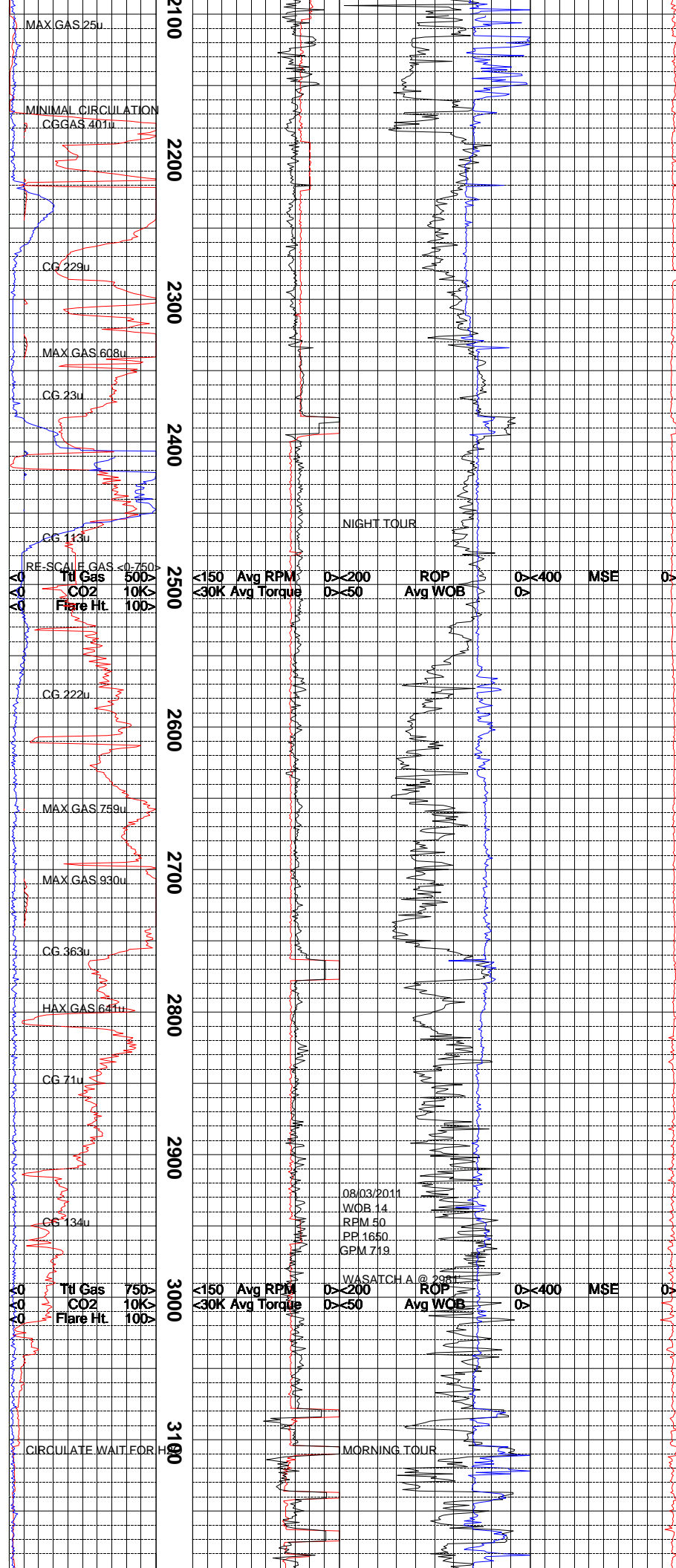
NIGHT TOUR

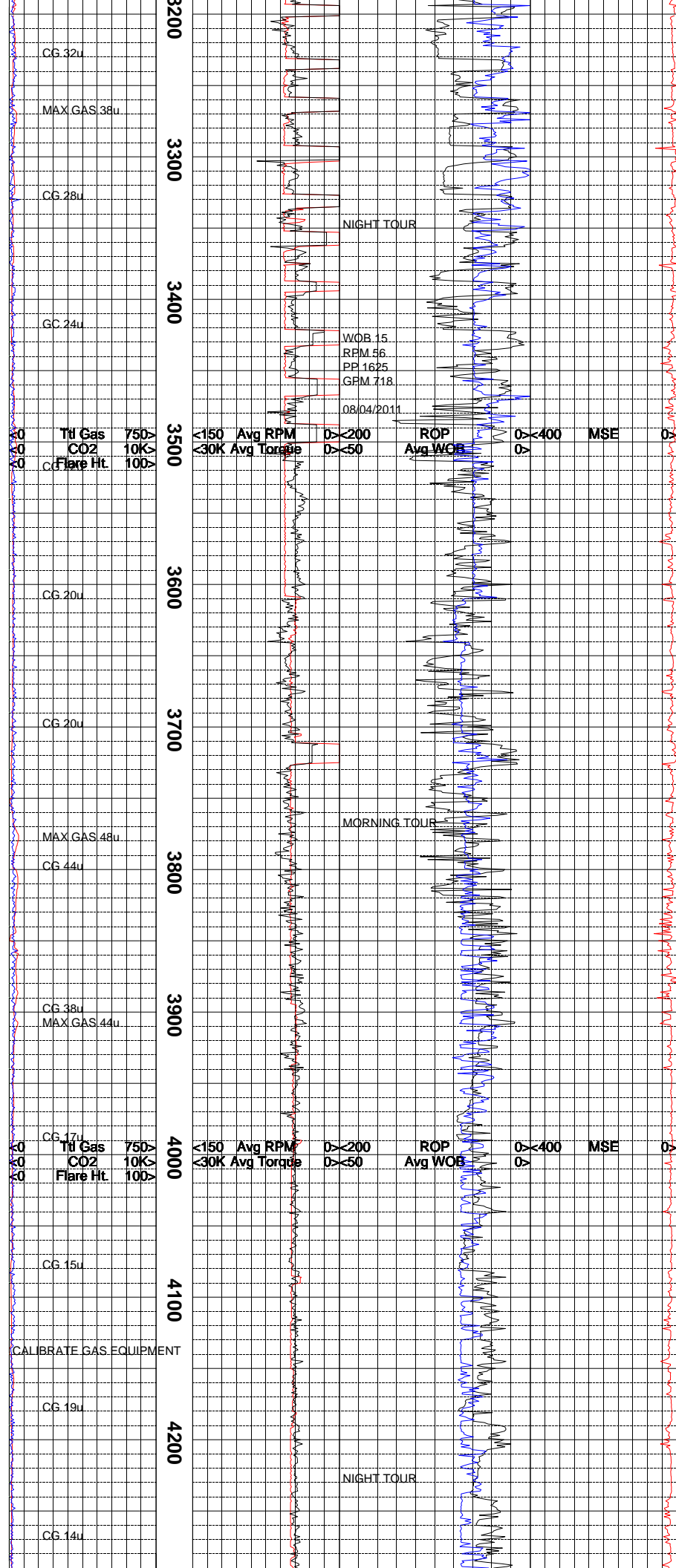
08/01/2011

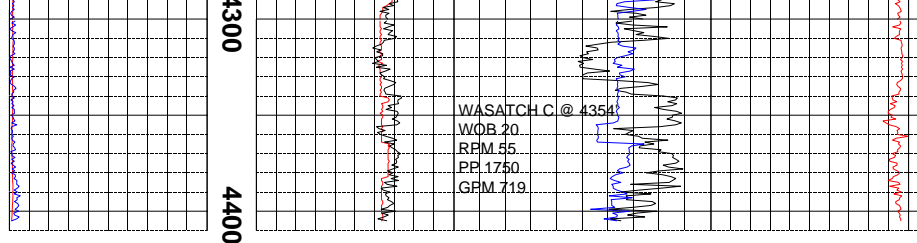
<150 Avg RPM 0> <200 ROP 0> <400 MSE 0>
<30K Avg Torque 0> <50 Avg WOB 0>
RPM 40
PP 1230
GPM 746

MORNING TOUR
WOB 13K
RPM 50
PP 1600
GPM 746









REACH SURFACE CASING TD OF 4407' @
20:58 HRS ON 8/04/2011

PLUG AND ABANDON ON 8/09/2011

The log data, interpretations and recommendation provided by Canrig are inferences and assumptions based on measurements of drilling fluids. Such inferences and assumptions are not infallible and reasonable professionals may differ. Canrig does not represent or warrant the accuracy, correctness or completeness of any log data, interpretations, recommendations or information provided by Canrig, its officers, agents or employees. Canrig does not and cannot guarantee the accuracy of any such interpretation of the log data, interpretations or recommendations and Company is fully responsible for all decisions and actions it takes based on such log data, interpretations and recommendations.