

# Cement Bond Log

Company		Pioneer Natural Resources	
Well		Beta 14-10 Tr	
Field		Purgatorie River	
County		Las Animas	
State		Colorado	
Location:		API #: 05 071 09846 00	
SEC 10 TWP 33S RGE 67W		DEVI	
Permanent Datum		GL	Elevation 7204'
Log Measured From		KB 4' AGL	K.B. 7208'
Drilling Measured From		KB	D.F. 7204'
Date		8-15-11	
Run Number	One		
Depth Driller	1615'		
Depth Logger	1585'		
Bottom Logged Interval	1583'		
Top Log Interval	Surface		
Open Hole Size	7 7/8		
Type Fluid	water		
Density / Viscosity	///		
Max. Recorded Temp.	///		
Estimated Cement Top	31'		
Time Well Ready	Portable Mast		
Time Logger on Bottom	2:30 P.M.		
Equipment Number	T590		
Location	Trinidad		
Recorded By	C. Sisneros		
Witnessed By	Mr. Curtis Adam		
Borehole Record		Tubing Record	
Run Number	Bit	From	To
Casing Record	Size	Wgt/Ft	Top
Surface String	8 5/8"		Bottom
Prot. String			470'
Production String	5 1/5"		
Liner			TD

<<< Fold Here >>>

All interpretations are opinions based on inferences from electrical or other measurements and we cannot and do not guarantee the accuracy or correctness of any interpretation, and we shall not, except in the case of gross or willful negligence on our part, be liable or responsible for any loss, costs, damages, or expenses incurred or sustained by anyone resulting from any interpretation made by any of our officers, agents or employees. These interpretations are also subject to our general terms and conditions set out in our current Price Schedule.

## Comments

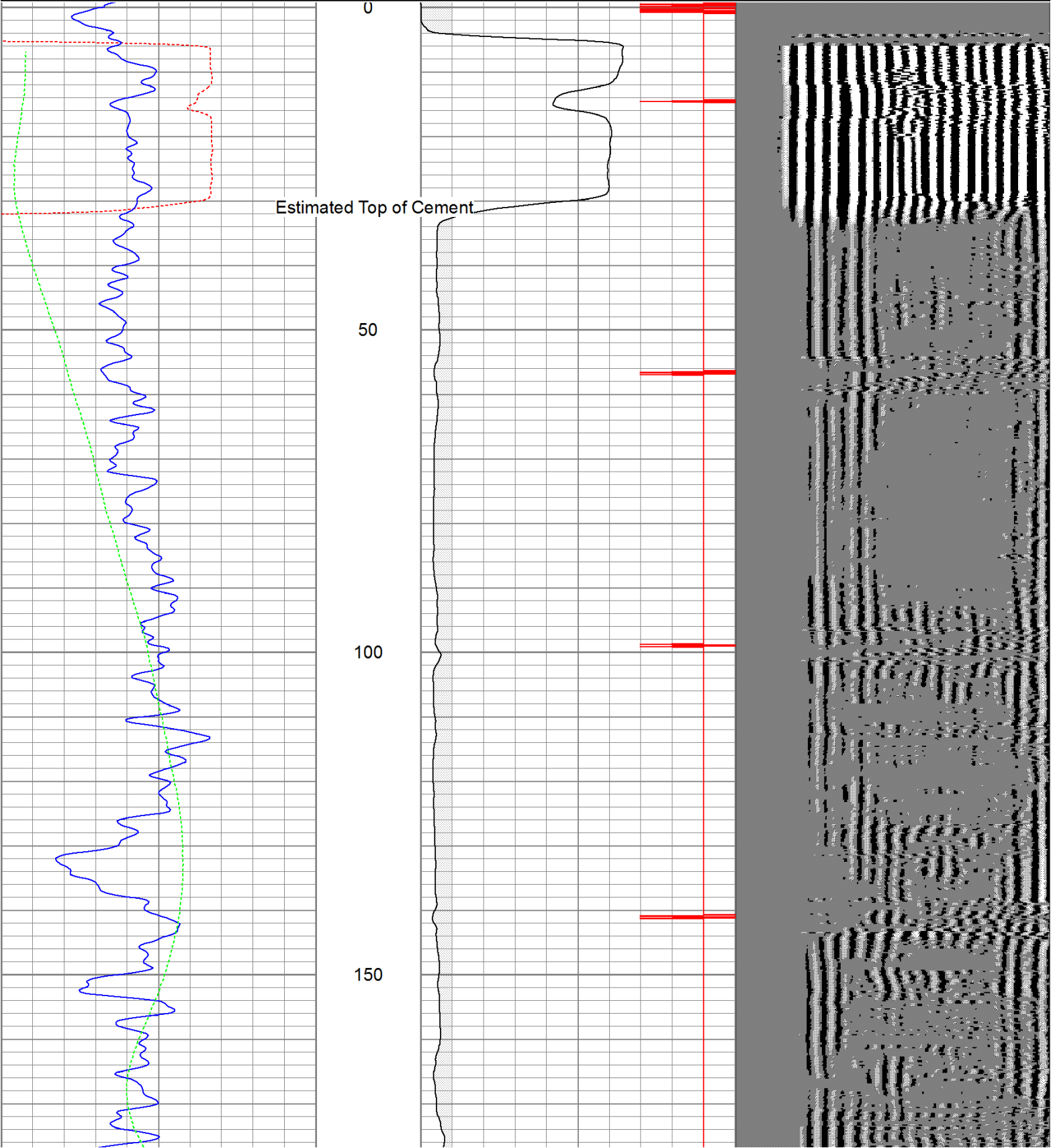
Main Pass logged under 1000 PSI.  
 Directions:  
 Wet Canyon, first left after Robinson Sawmill.

Database File: betatr81511b.db  
Dataset Pathname: pass2.1  
Presentation Format: cbldig  
Dataset Creation: Mon Aug 15 15:40:32 2011 by Calc Open-Cased 110302  
Charted by: Depth in Feet scaled 1:240

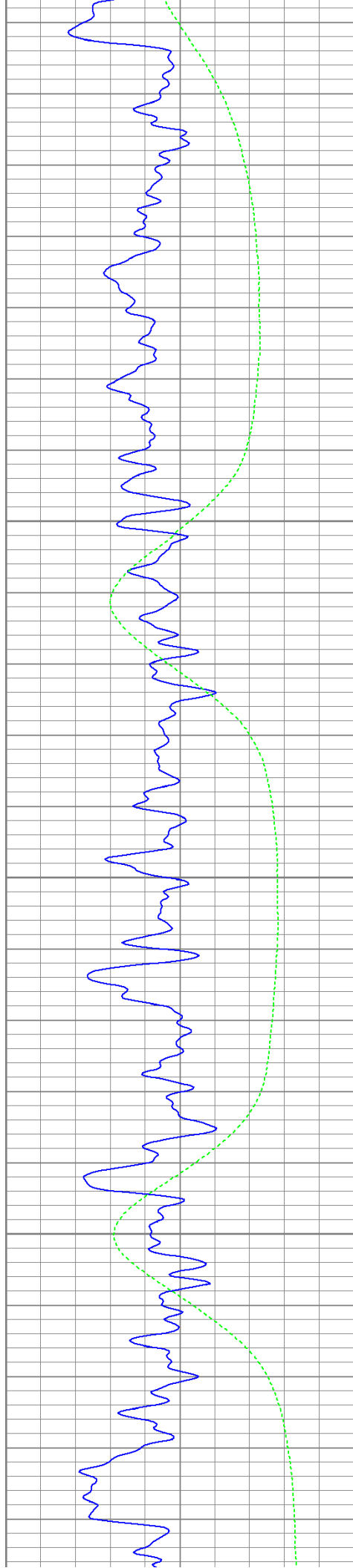
400	Travel Time (usec)	200
0	GR (GAPI)	200
0	DEVI (°)	10

0	Amplitude (mV)	100
9	Collar Locator	-1

200 Variable Density 1200





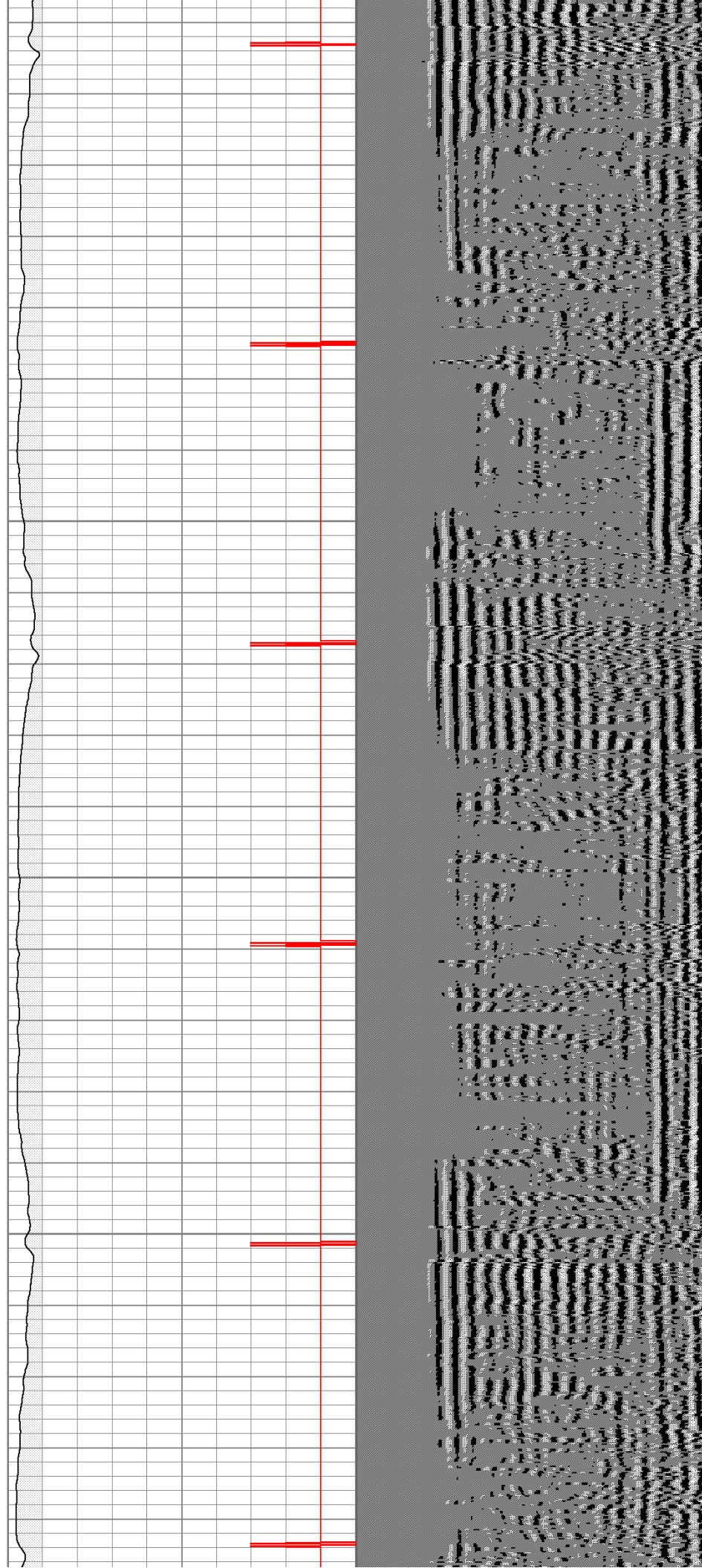


200

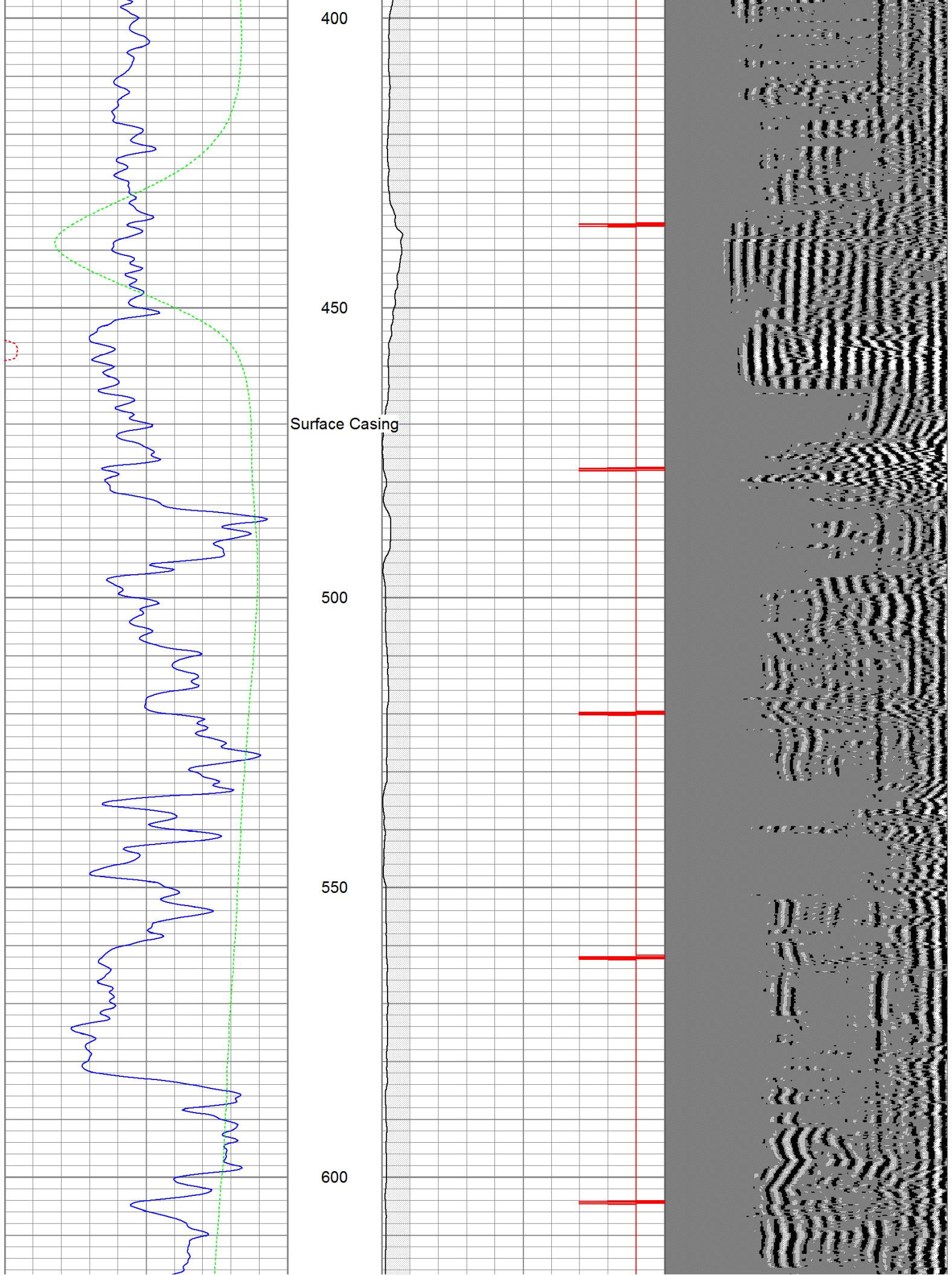
250

300

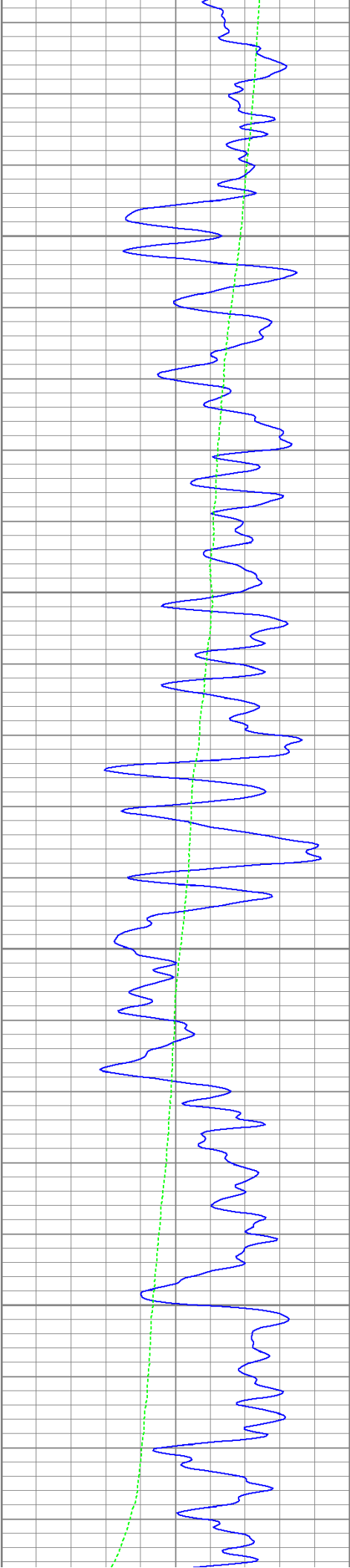
350









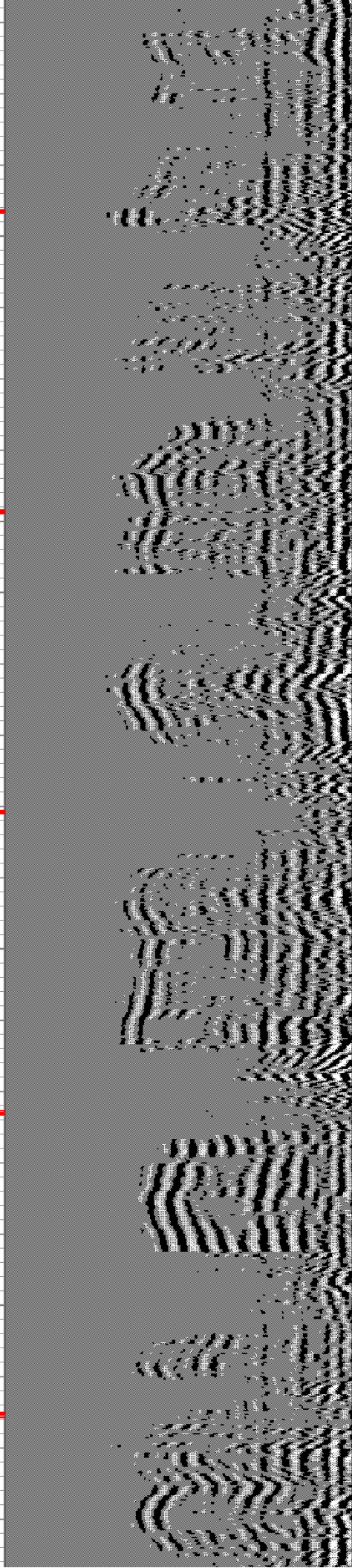
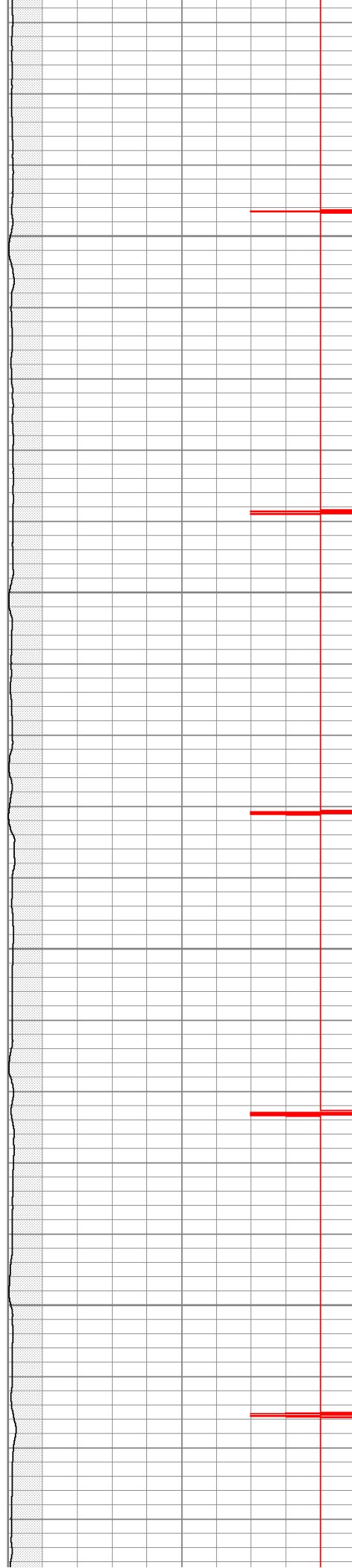


650

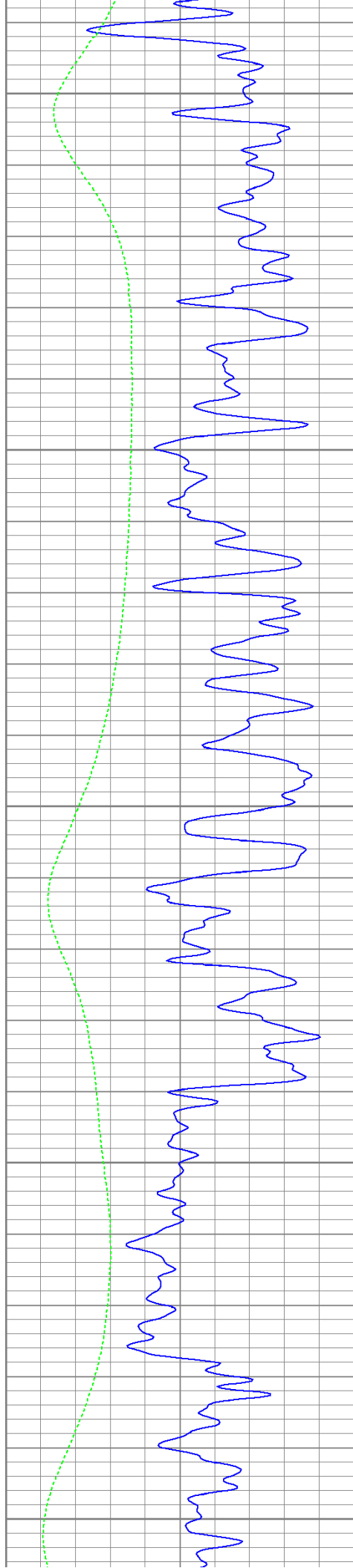
700

750

800







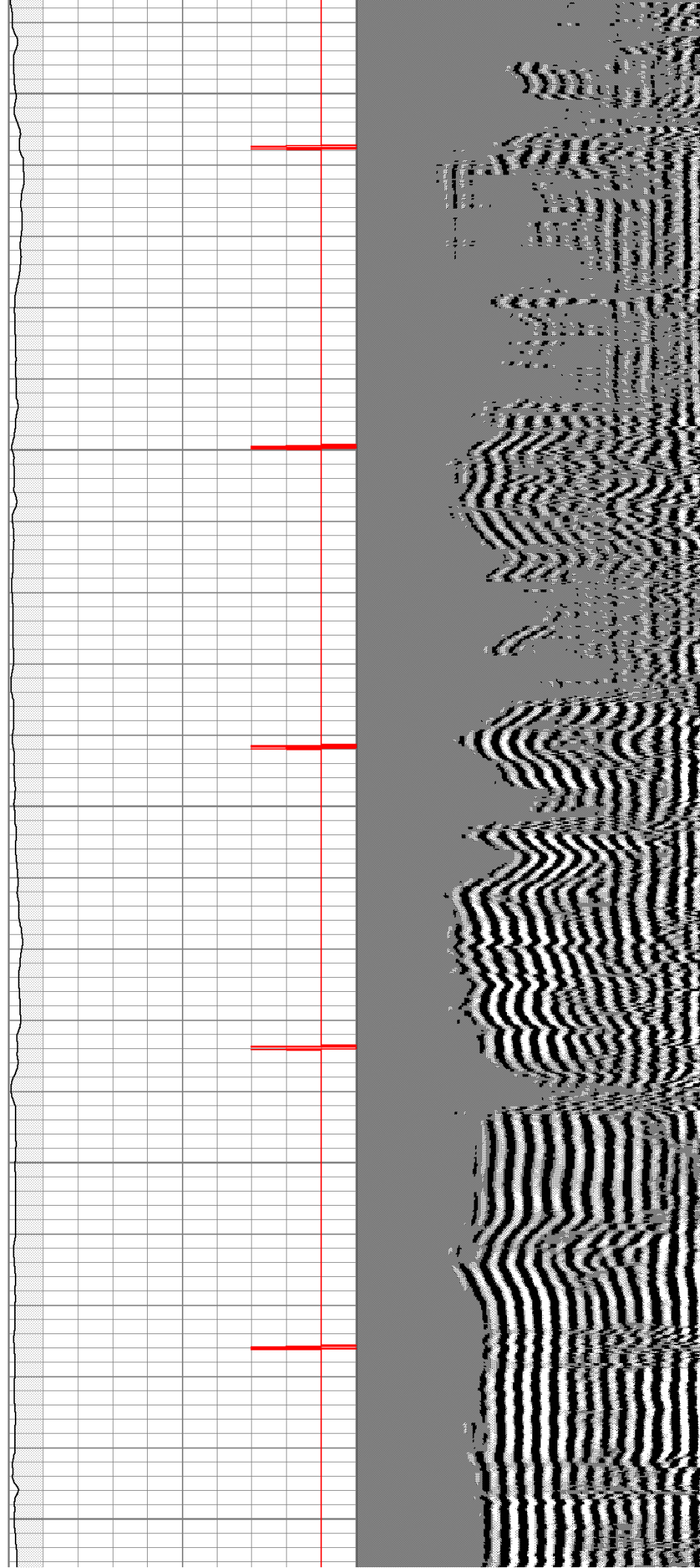
850

900

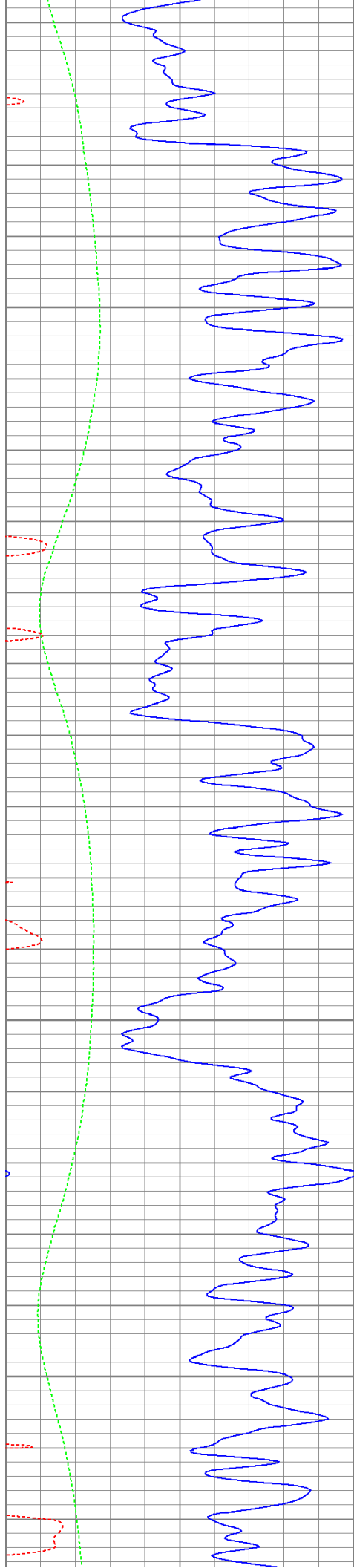
950

1000

1050







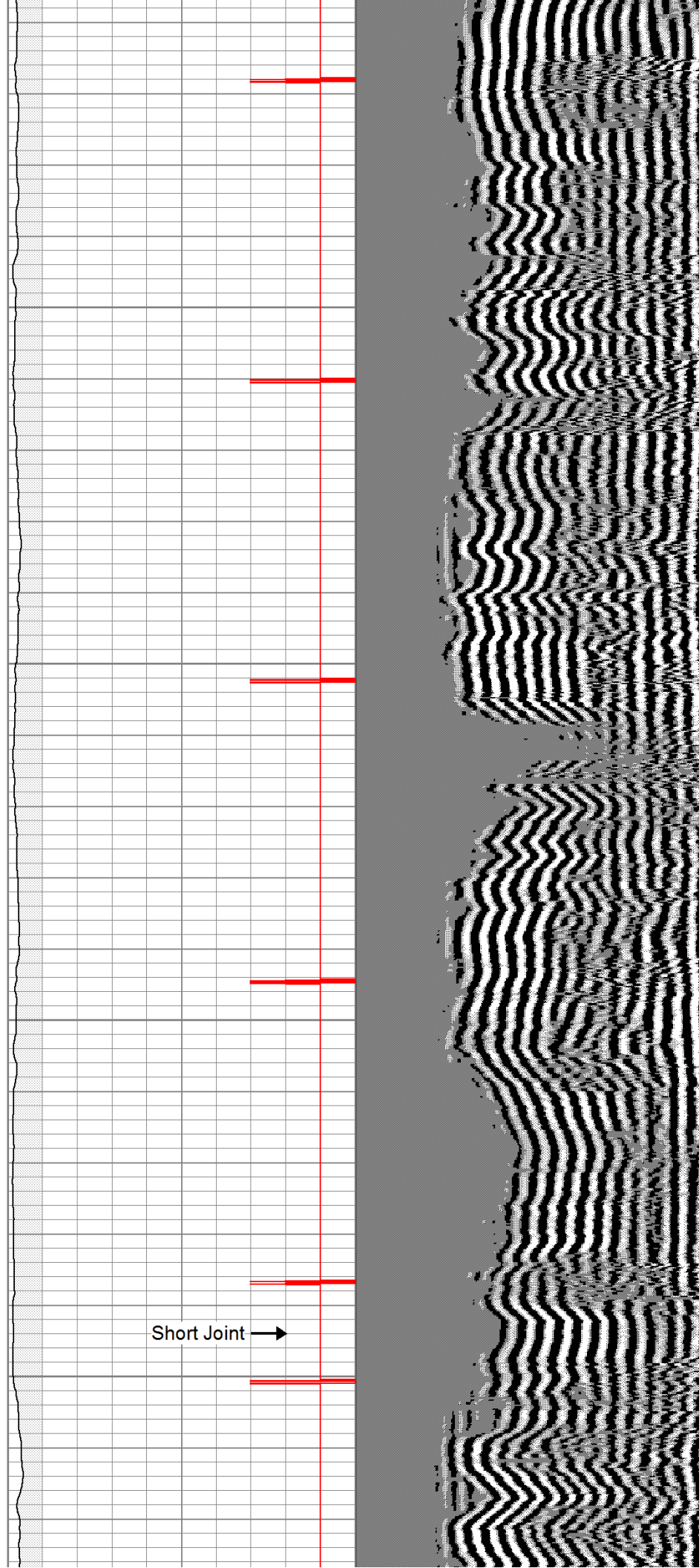
1100

1150

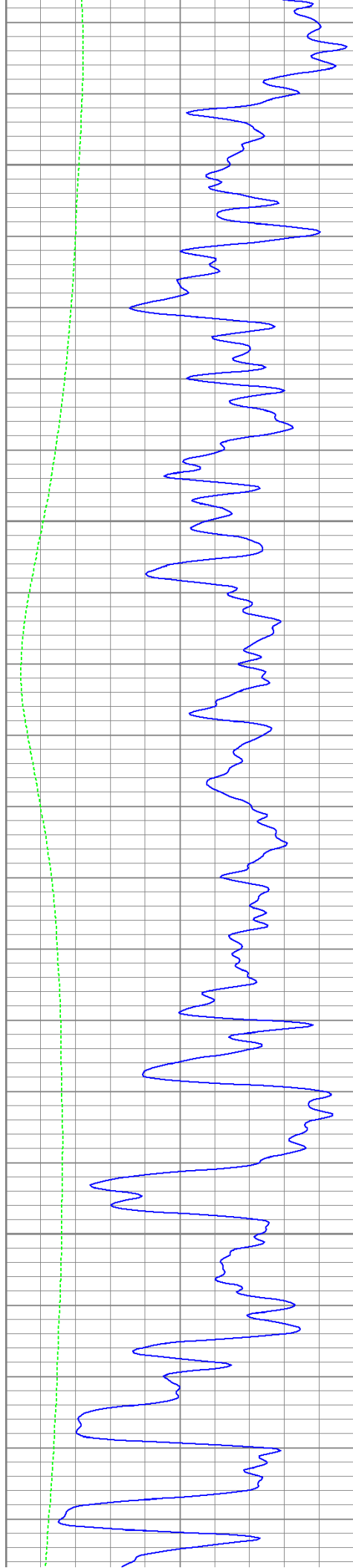
1200

1250

Short Joint →





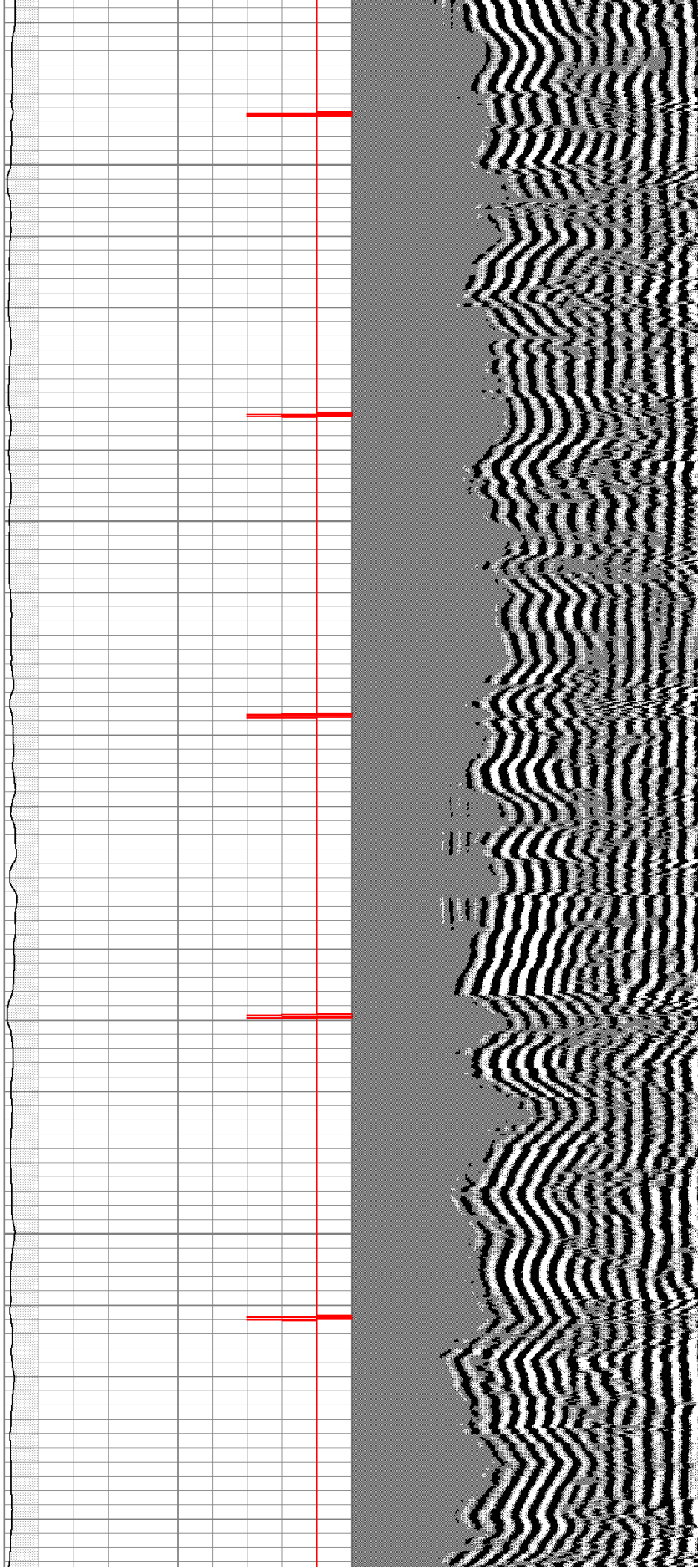


1300

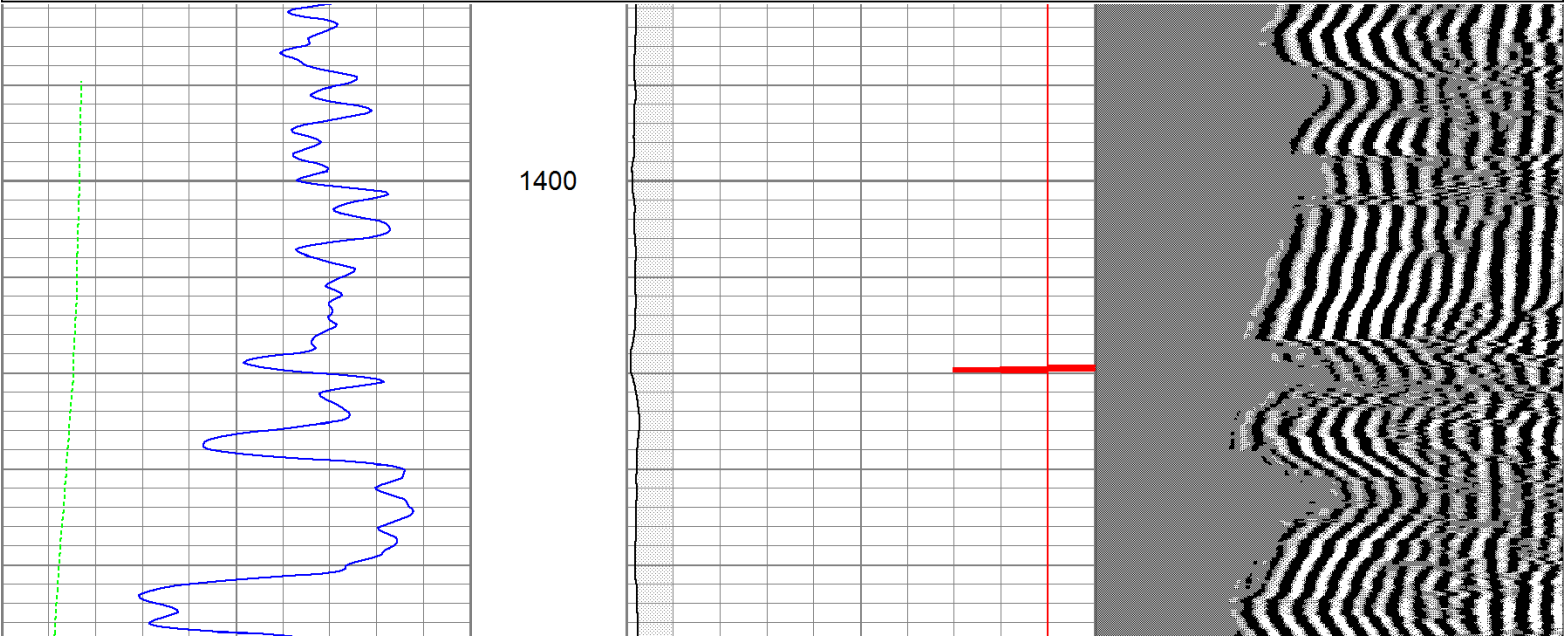
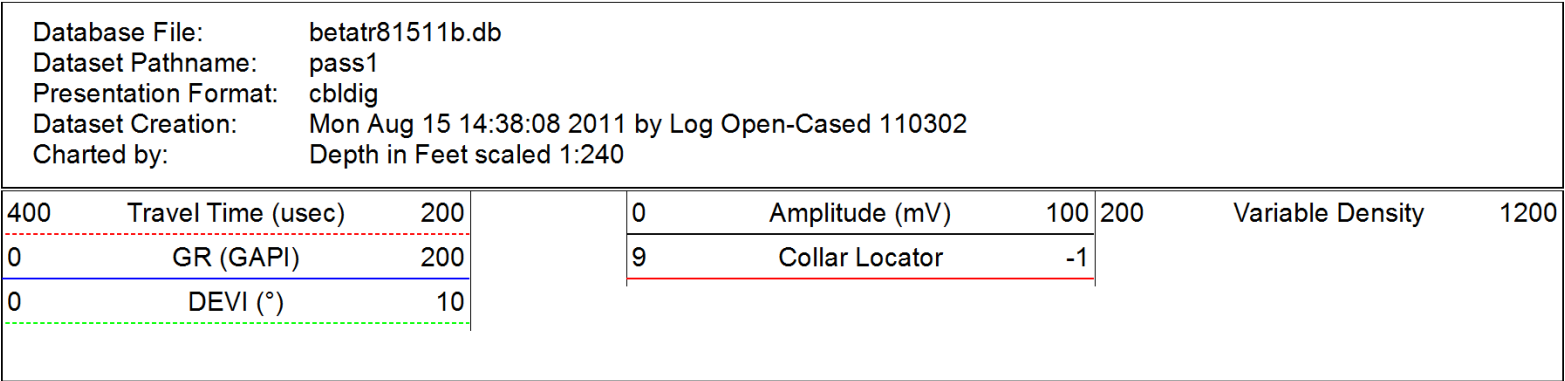
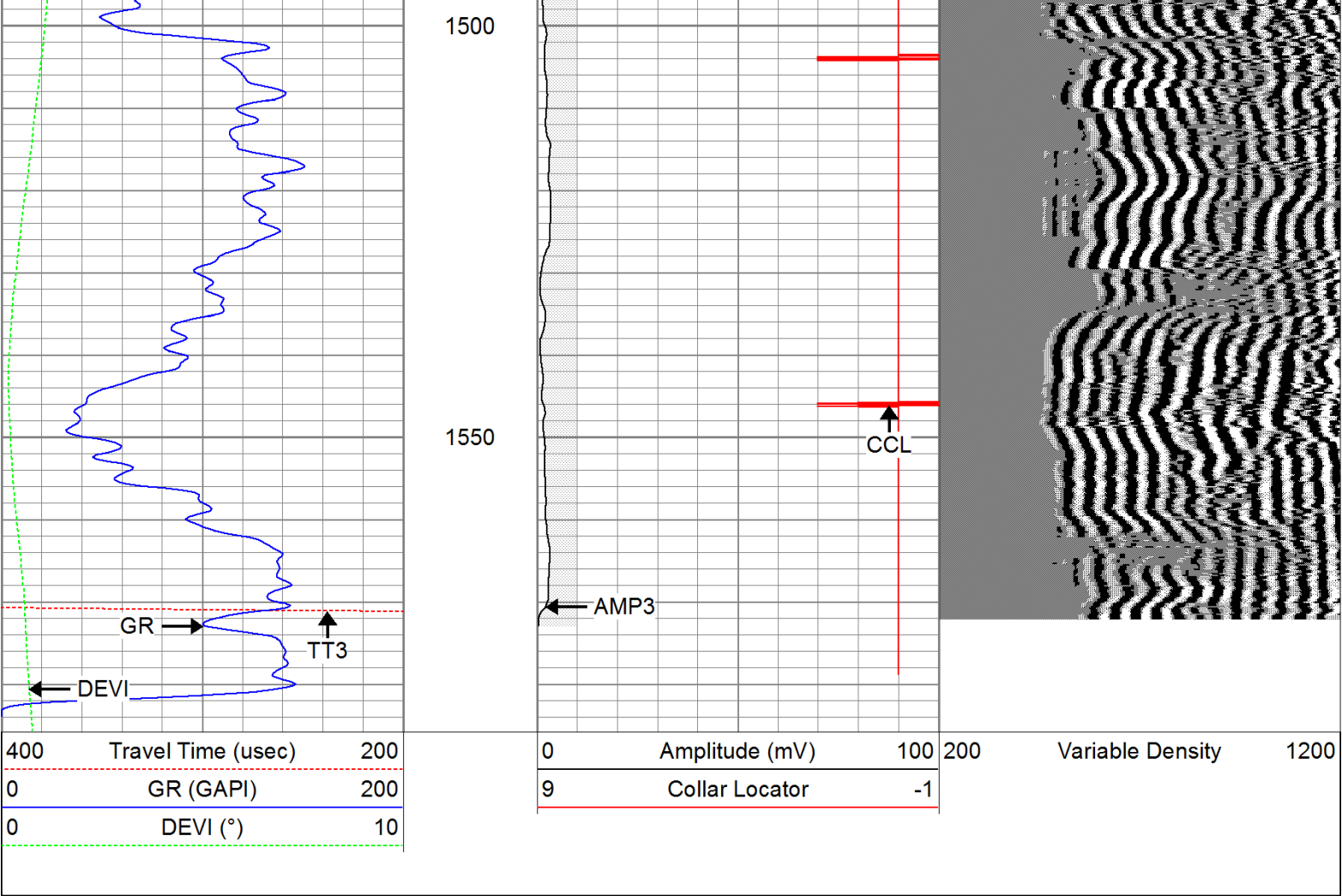
1350

1400

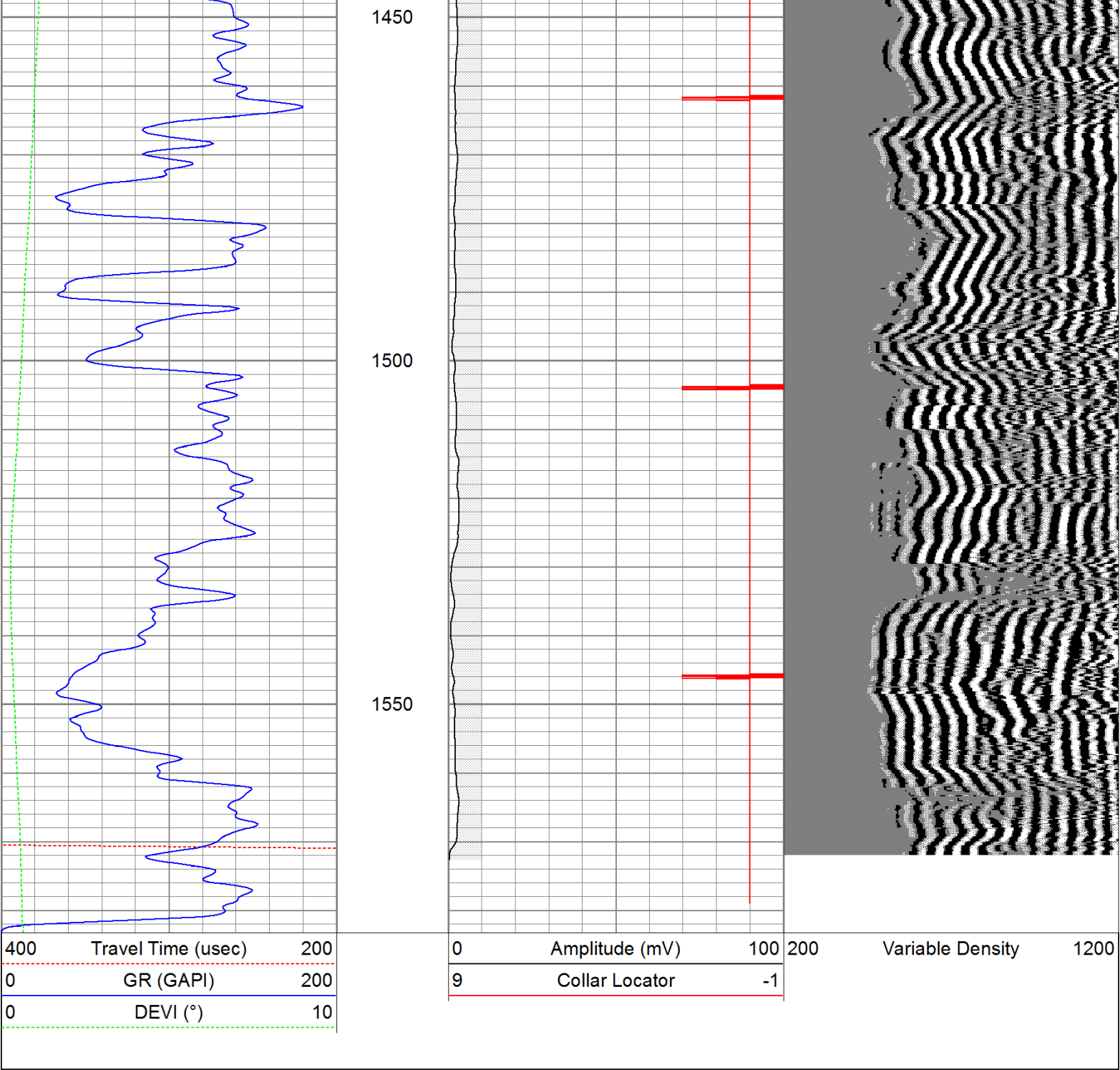
1450











Calibration Report

Database File: betatr81511b.db  
Dataset Pathname: pass1  
Dataset Creation: Mon Aug 15 14:38:08 2011 by Log Open-Cased 110302

Gamma Ray Calibration Report

Serial Number: 080616  
Tool Model: 275D\_INC  
Performed: Wed Aug 10 09:13:03 2011

Calibrator Value: 200.0 GAPI

Background Reading: 50.0 cps  
Calibrator Reading: 250.0 cps

Sensitivity: 1.0000 GAPI/cps




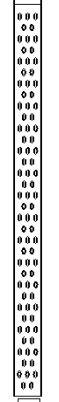

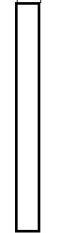

# Inclinometer Calibration Report

Performed: Wed Aug 10 09:13:09 2011

	Low Read.	High Read.	Low Ref.	High Ref.	
X Accelerometer	-3585.20	3595.40	-1.00	1.00	gee
Y Accelerometer	-3619.40	3520.00	-1.00	1.00	gee
Z Accelerometer					

## Cement Bond Log Calibration Report

Serial Number:	081024				
Tool Model:	PROBEDIGITALCBL				
Performed:	Wed Aug 10 09:18:37 2011				
Depth:	93.4615	ft			
Casing Diameter:	5.5	in			
	3' Spacing		5' Spacing		
Signal Zero:	0		0		mV
Calibrated Amplitude:	85		85		mV
Reading at Signal Zero:	-0.00874023		-0.0092041		V
Reading in Free Pipe:	1.72476		1.66304		V
Gain:	49.0339		50.83		
Offset:	0.428567		0.467844		

Sensor	Offset (ft)	Schematic	Description	Len (ft)	OD (in)	Wt (lb)
			None	0.75	1.50	5.00
WVF3	14.75		CBL-PROBEDIGITALCBL (081024) PROBE DIGITAL CBL	8.75	2.75	106.50
WVF5	13.75					
			X	3.00	1.69	25.00
CCL	6.50		GR-275D_INC (080616) 2-3/4" GR-CCL with Inclination	4.50	2.75	50.00
ACCX	4.83					
ACCY	4.83					
ACCZ	4.83					
GR	3.83		X	3.00	1.69	25.00



<div><div>Dataset:</div><div>betatr81511b.db: field/well/run1/pass1</div><div>Total Length:</div><div>20.00 ft</div><div>Total Weight:</div><div>211.50 lb</div><div>O.D.</div><div>2.75 in</div></div>					