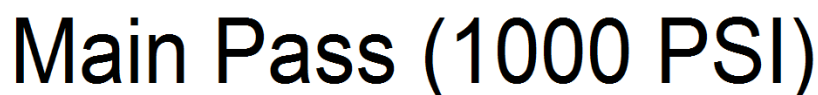




<<< Fold Here >>>
All interpretations are opinions based on inferences from electrical or other measurements and we cannot and do not guarantee the accuracy or correctness of any interpretation, and we shall not, except in the case of gross or willful negligence on our part, be liable or responsible for any loss, costs, damages, or expenses incurred or sustained by anyone resulting from any interpretation made by any of our officers, agents or employees. These interpretations are also subject to our general terms and conditions set out in our current Price Schedule.
Comments
Logged under 1000 PSI. Directions: Rancho Escondido, turn left at trash dumpsters, go thru gate on cattle gaurd, straight to top of hill and go right, 2nd right to location.

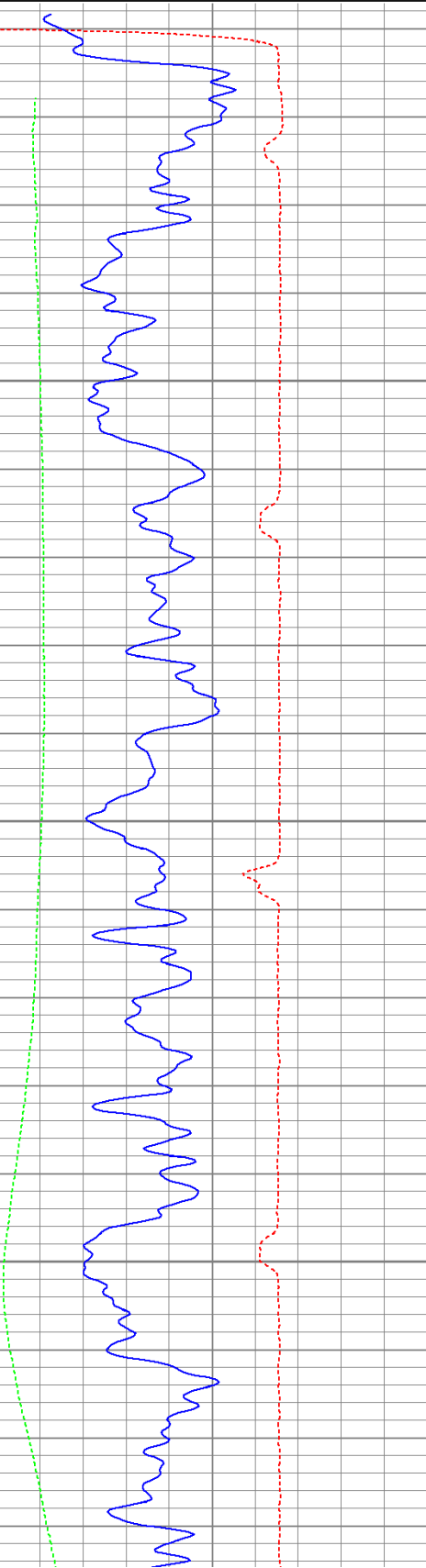


Database File: timbale71911b.db
Dataset Pathname: pass2.1
Presentation Format: cbldig
Dataset Creation: Tue Jul 19 16:16:33 2011 by Calc Open-Cased 110302
Charted by: Depth in Feet scaled 1:240

400	Travel Time (usec)	200
0	GR (GAPI)	200
0	DEVI (°)	10

0	Amplitude (mV)	100
9	Collar Locator	-1

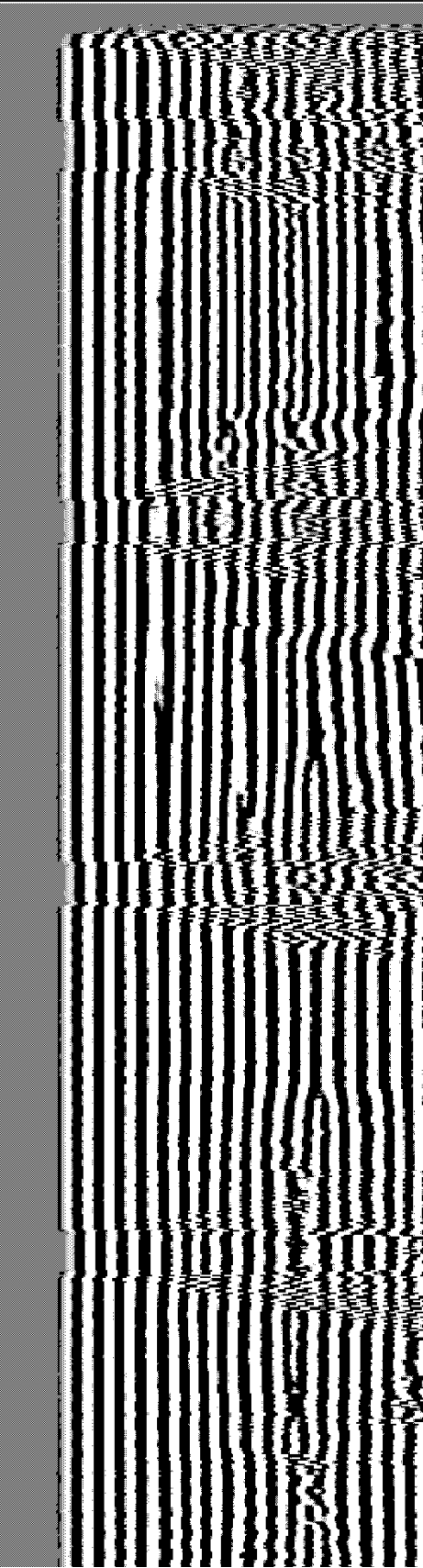
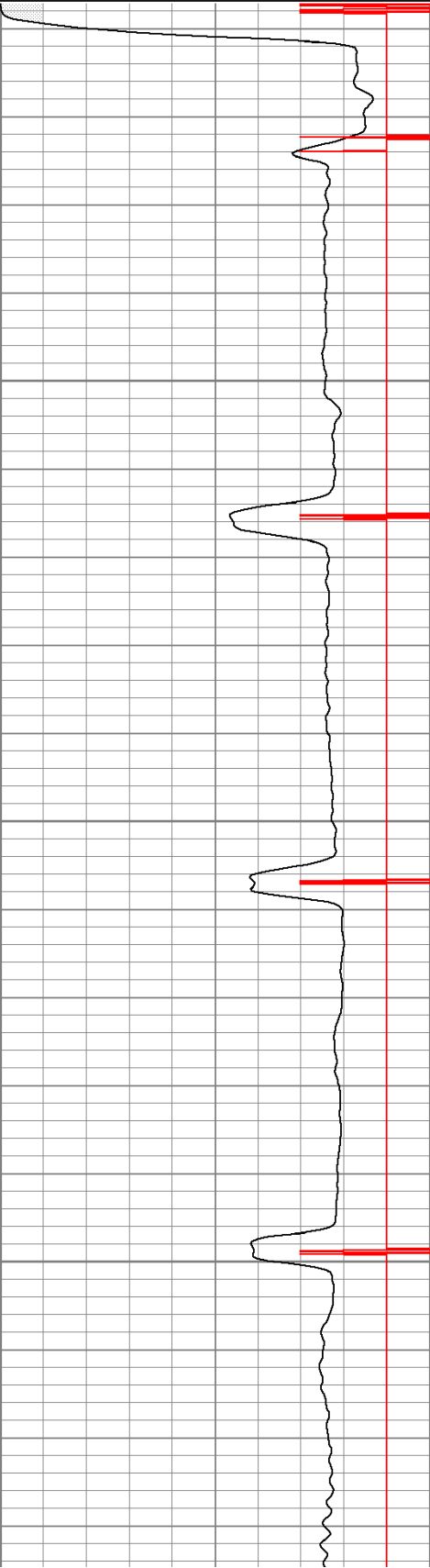
200 Variable Density 1200

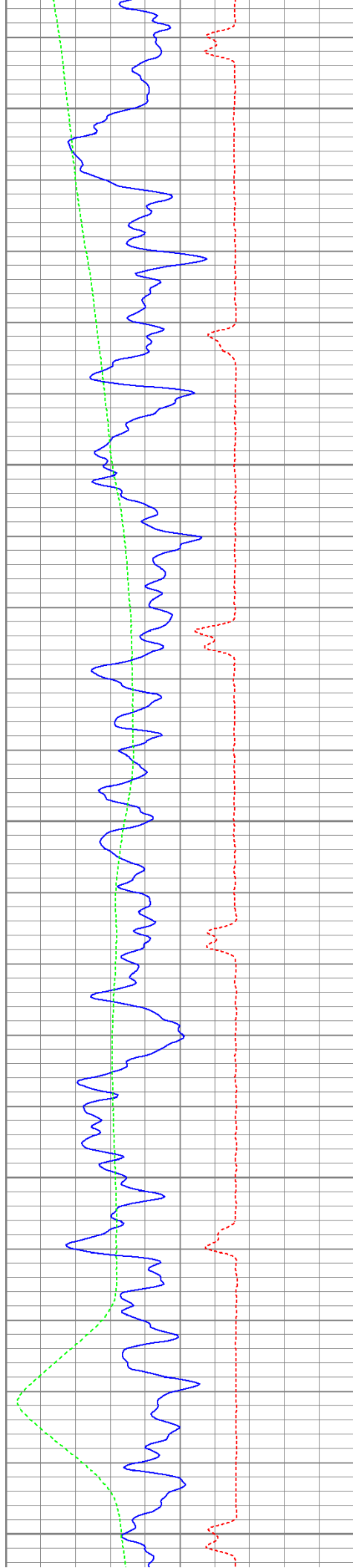


50

100

150





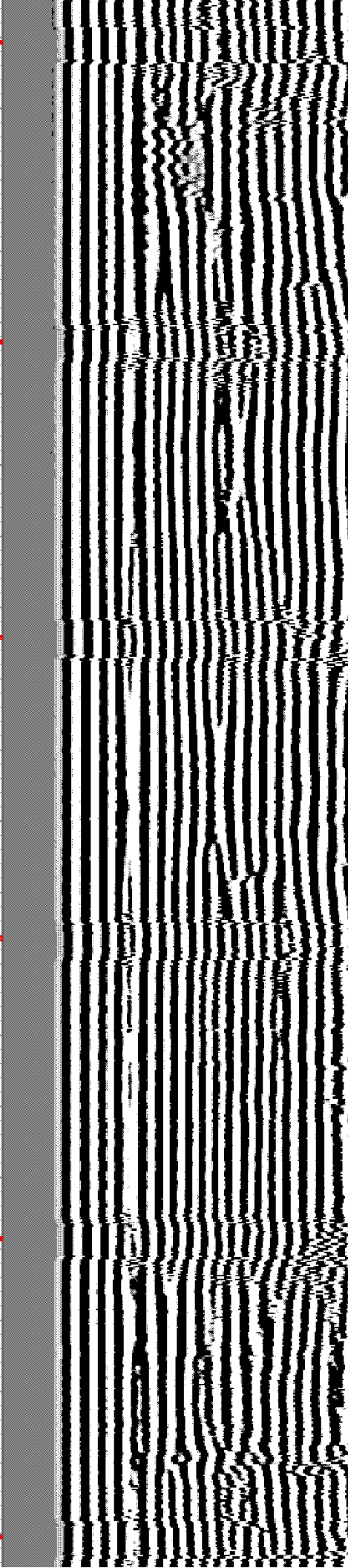
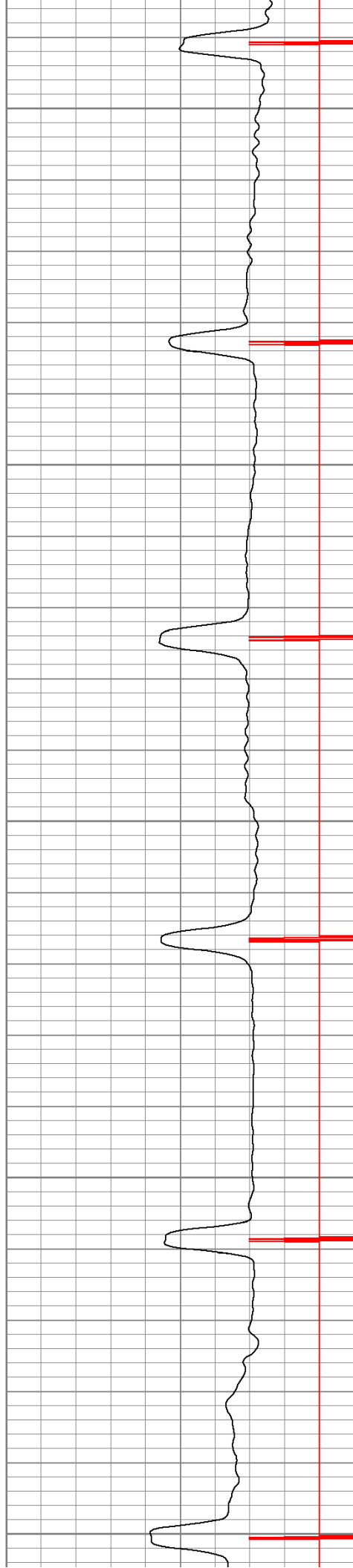
200

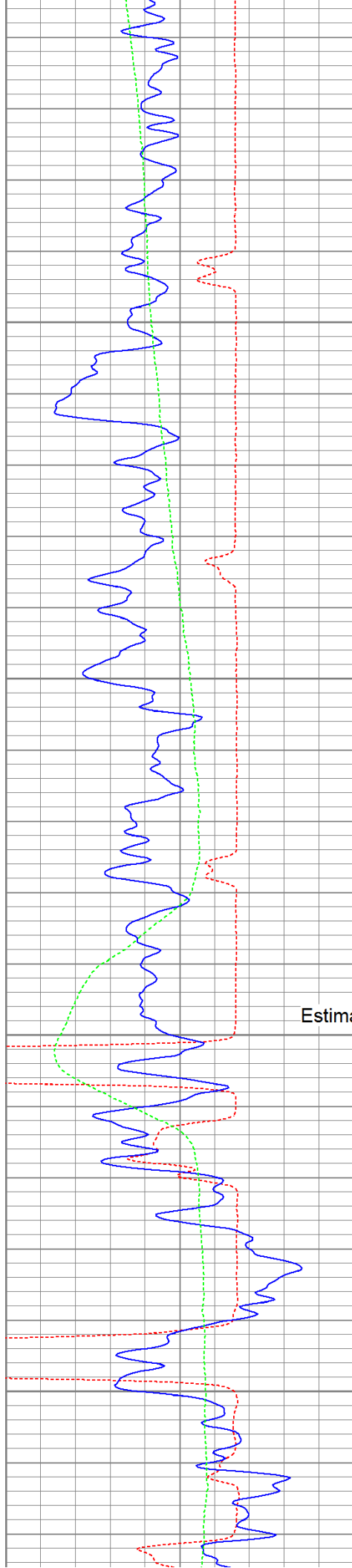
250

300

350

400



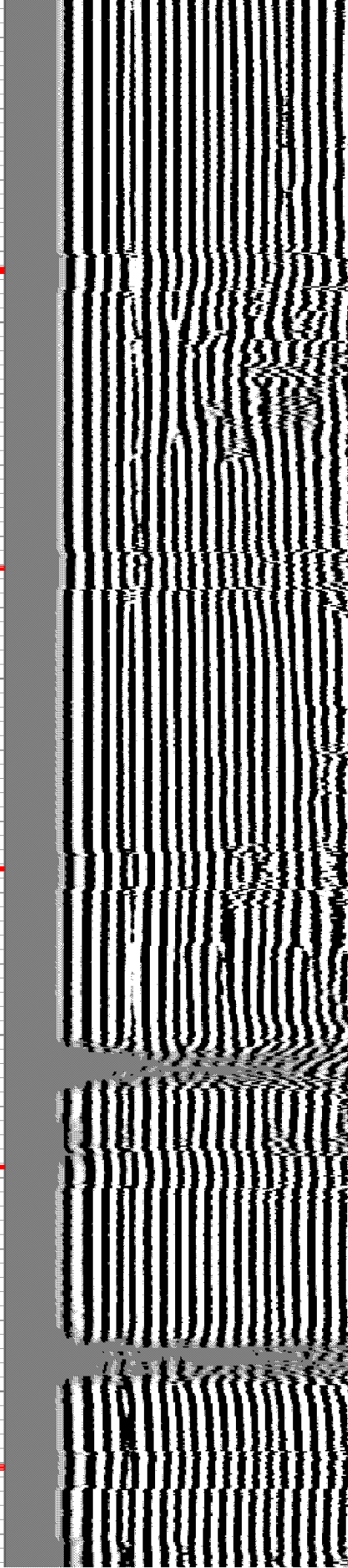
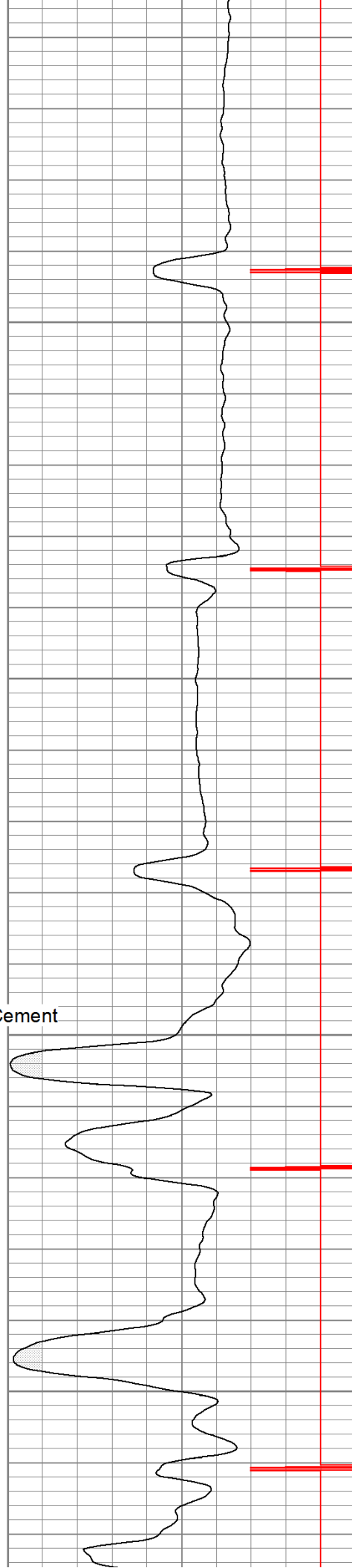


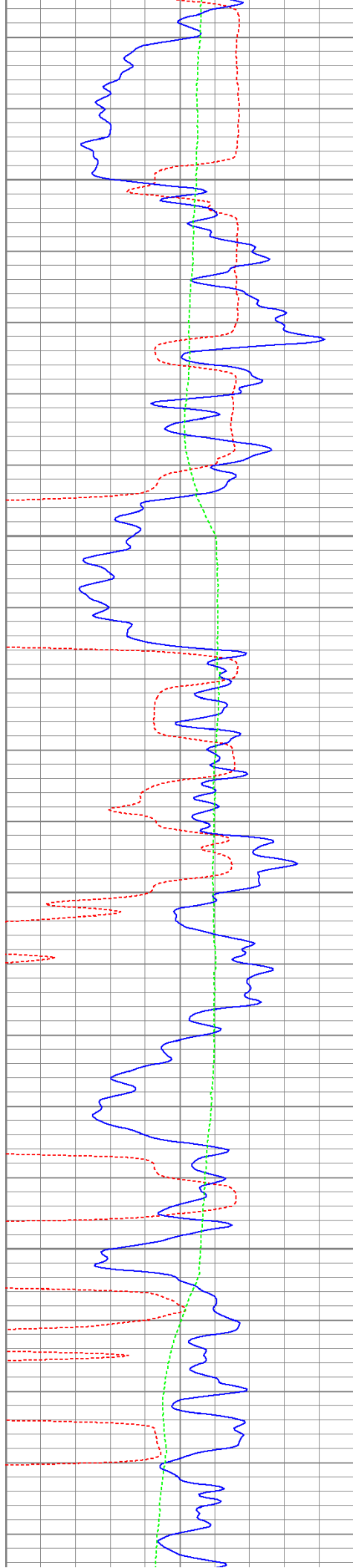
450

500

Estimated Top of Cement
550

600



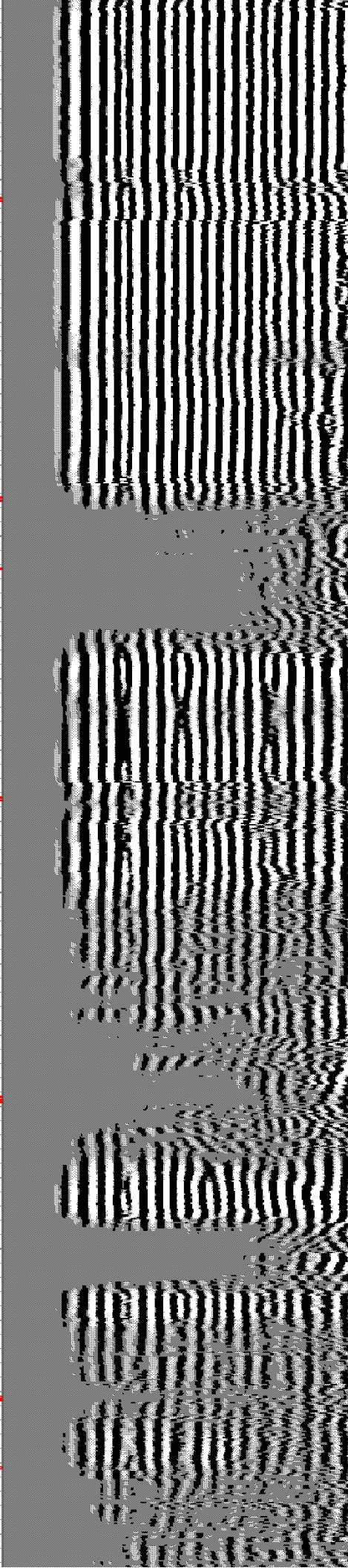
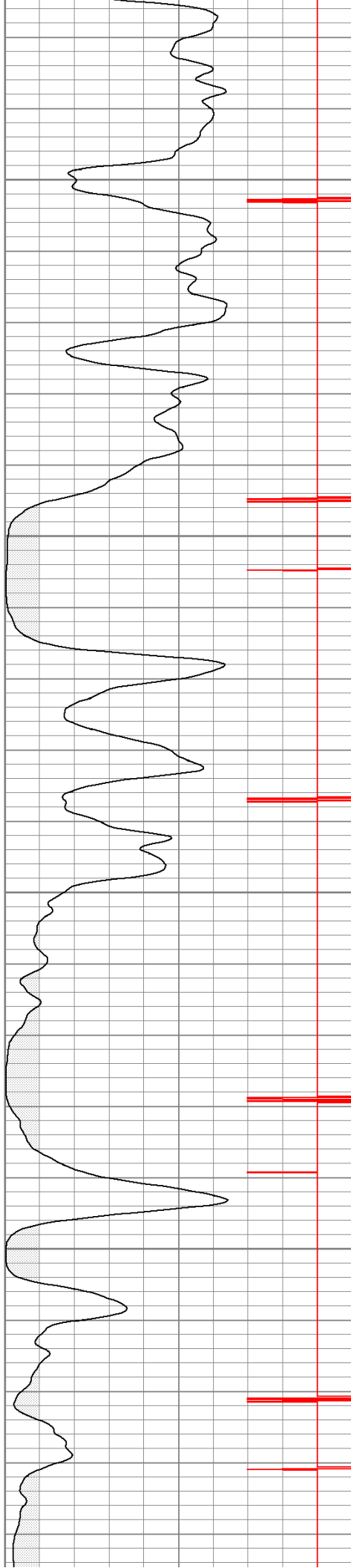


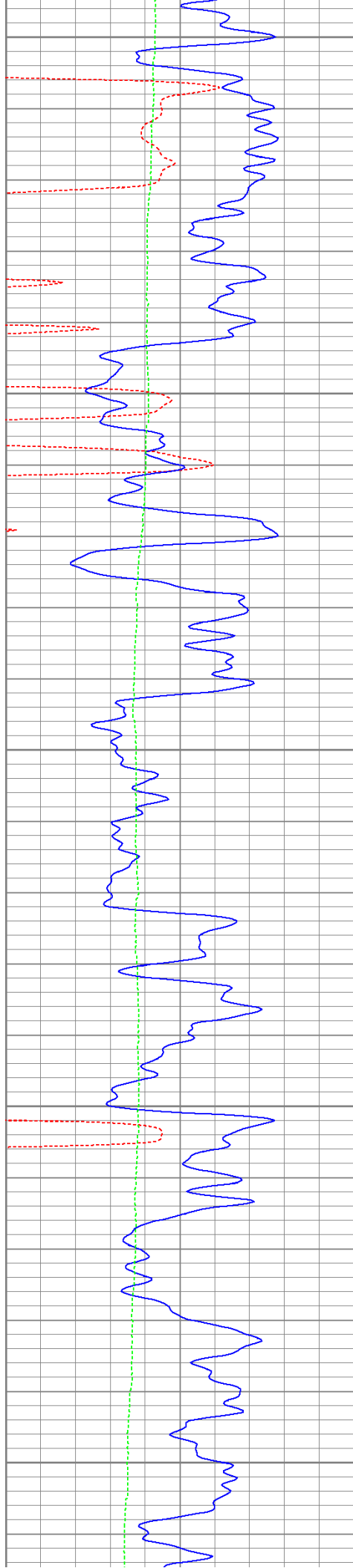
650

700

750

800





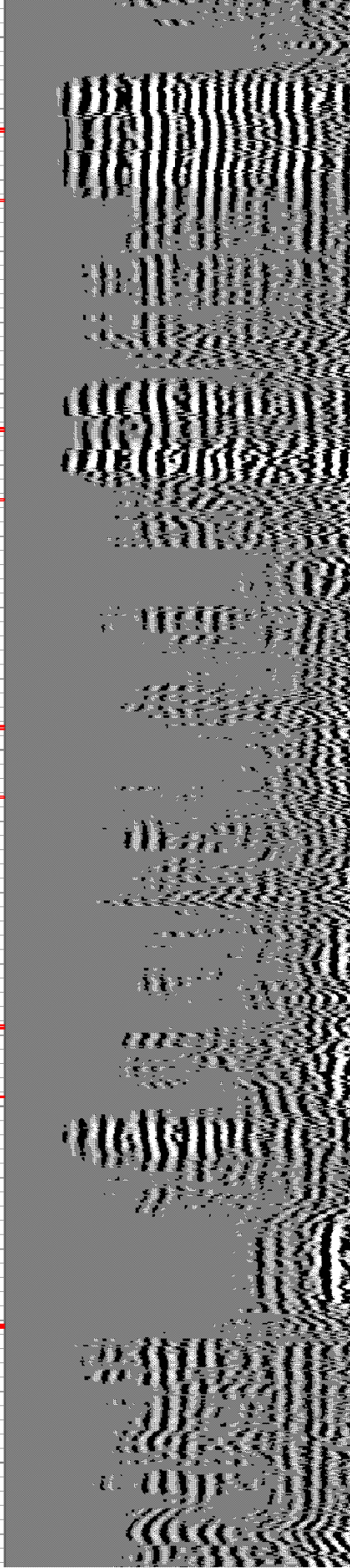
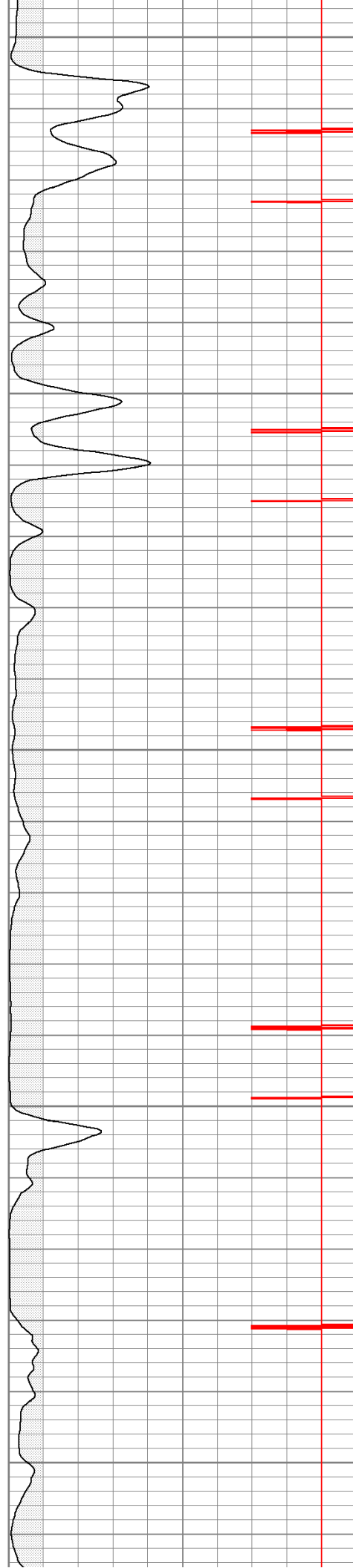
850

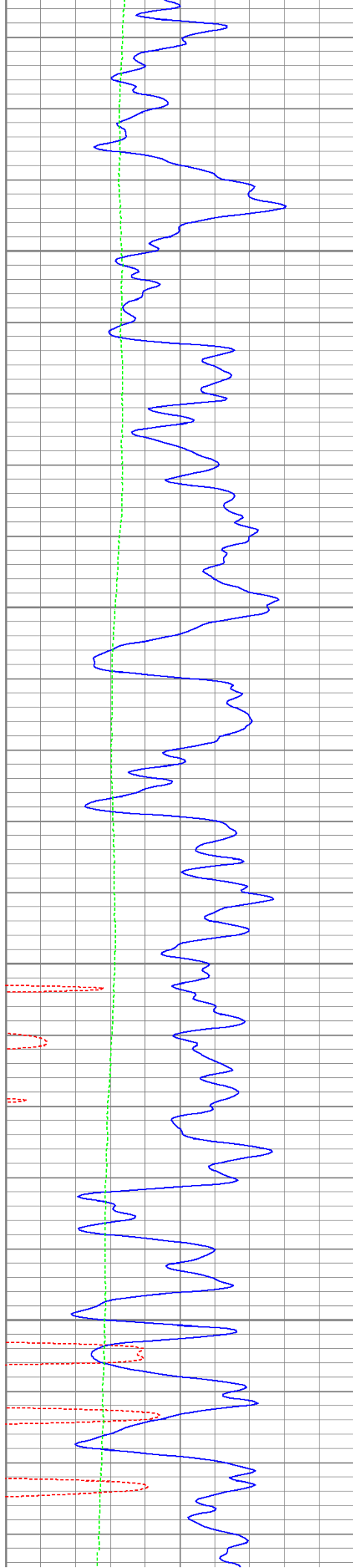
900

950

1000

1050



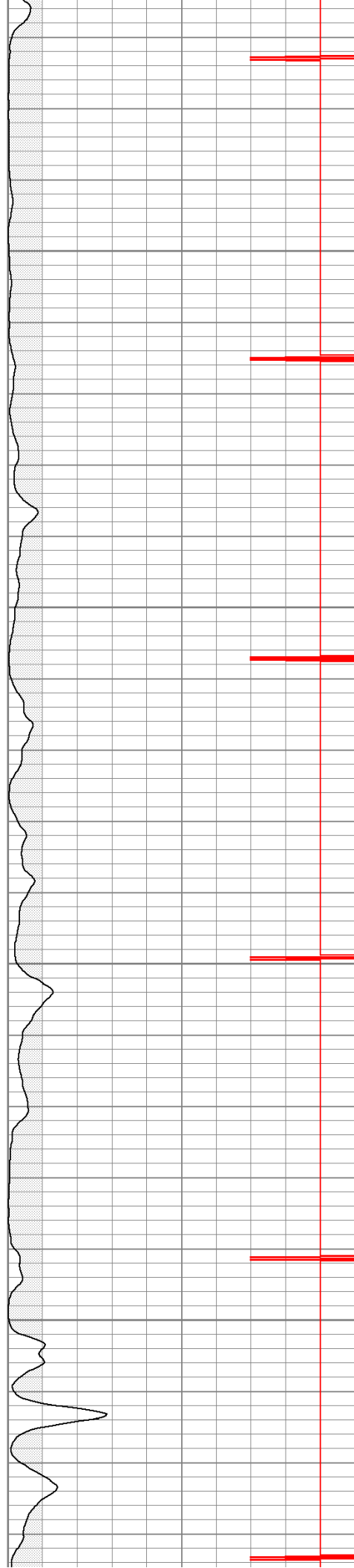


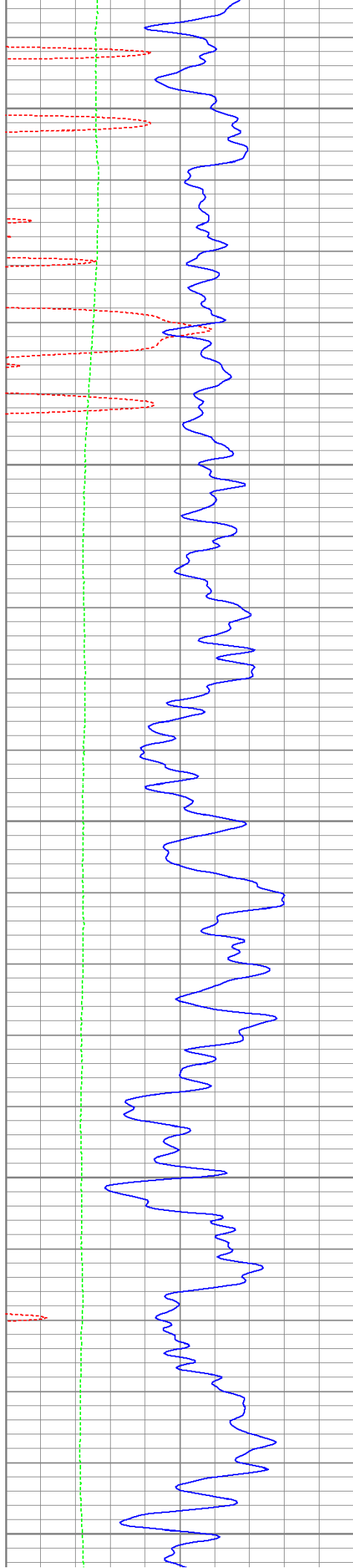
1100

1150

1200

1250





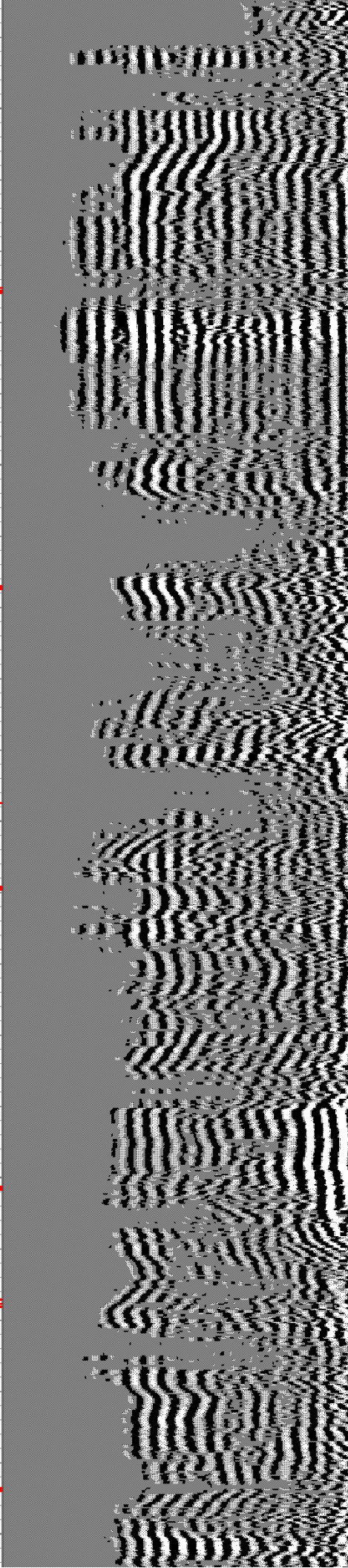
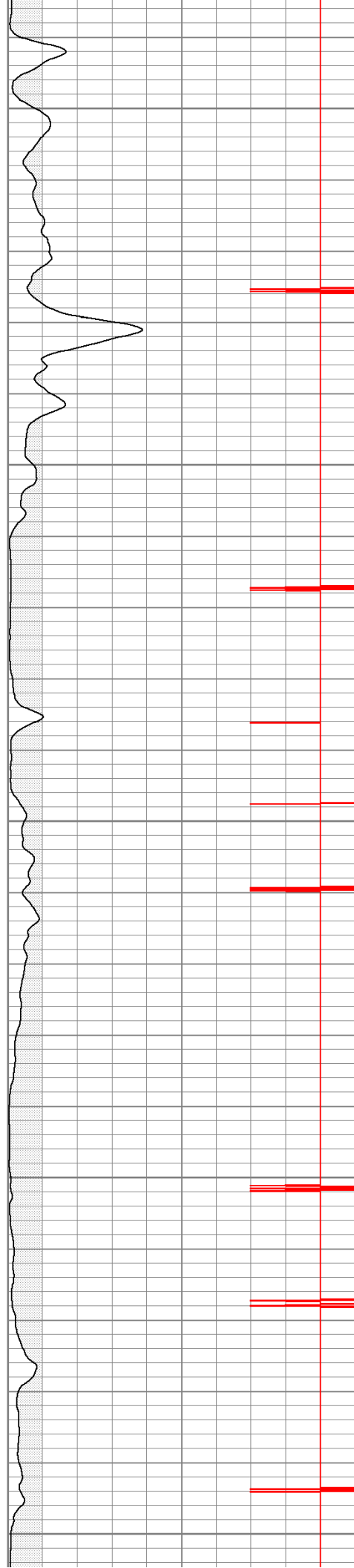
1300

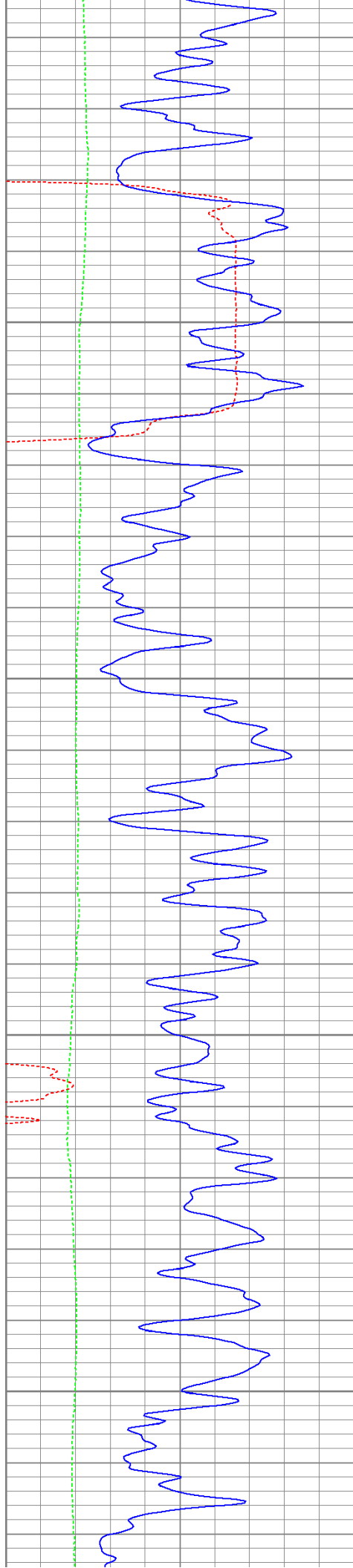
1350

1400

1450

1500



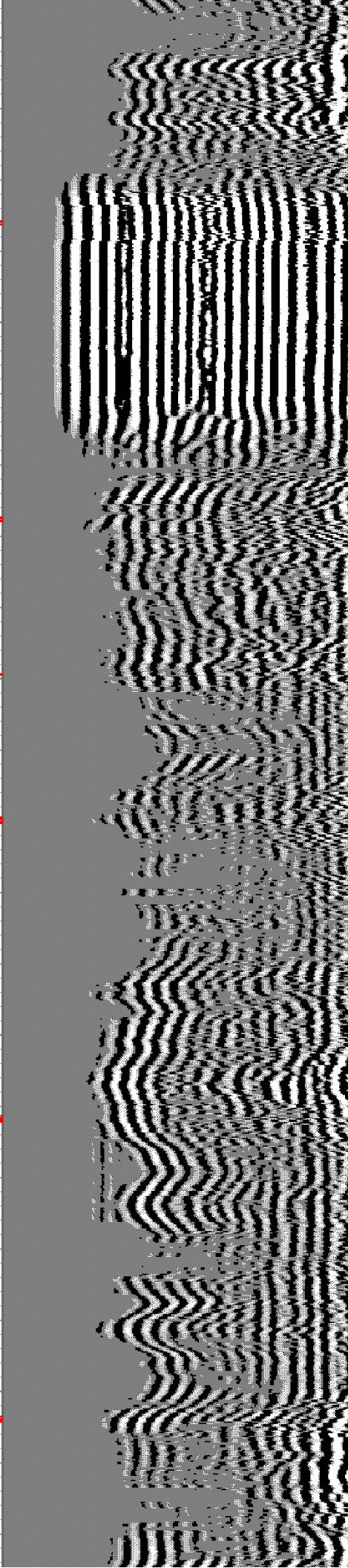
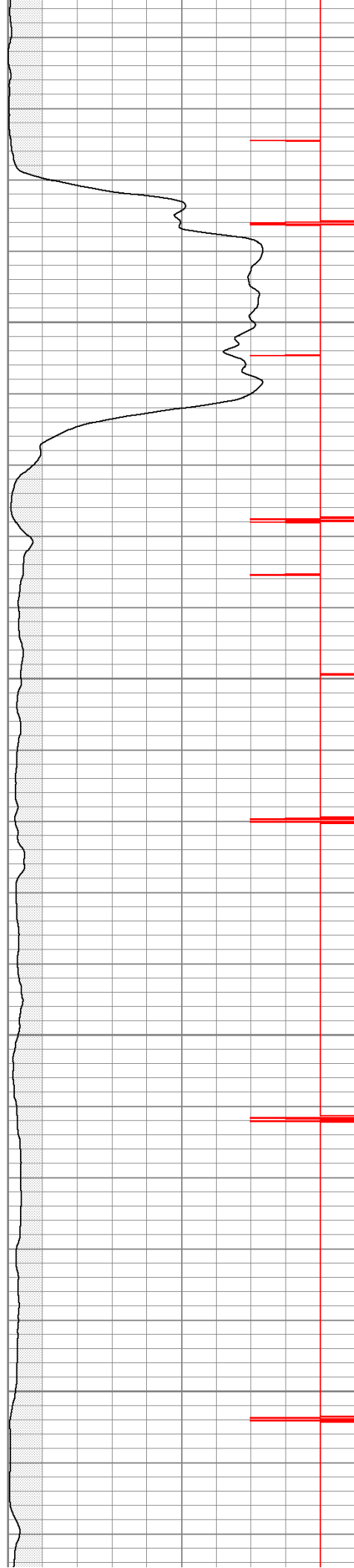


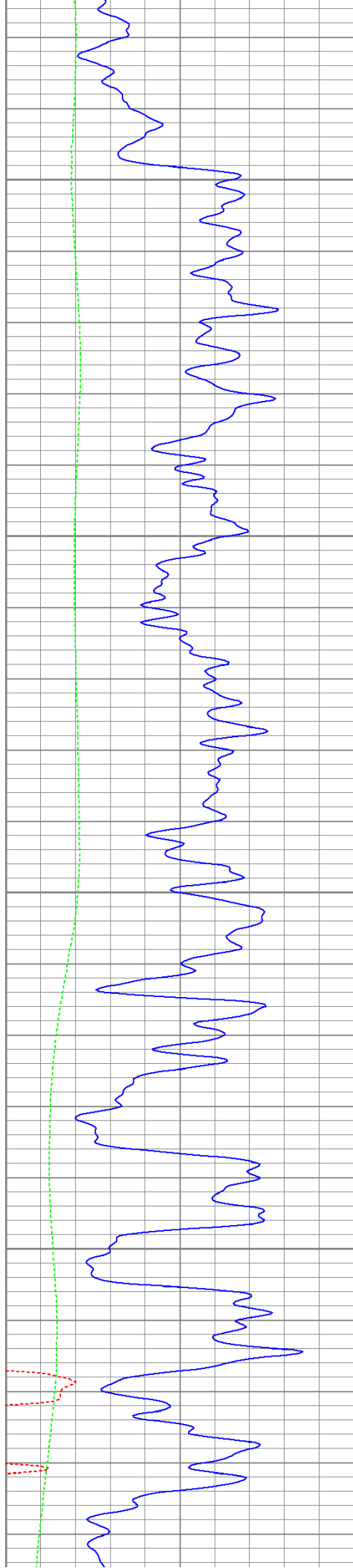
1550

1600

1650

1700



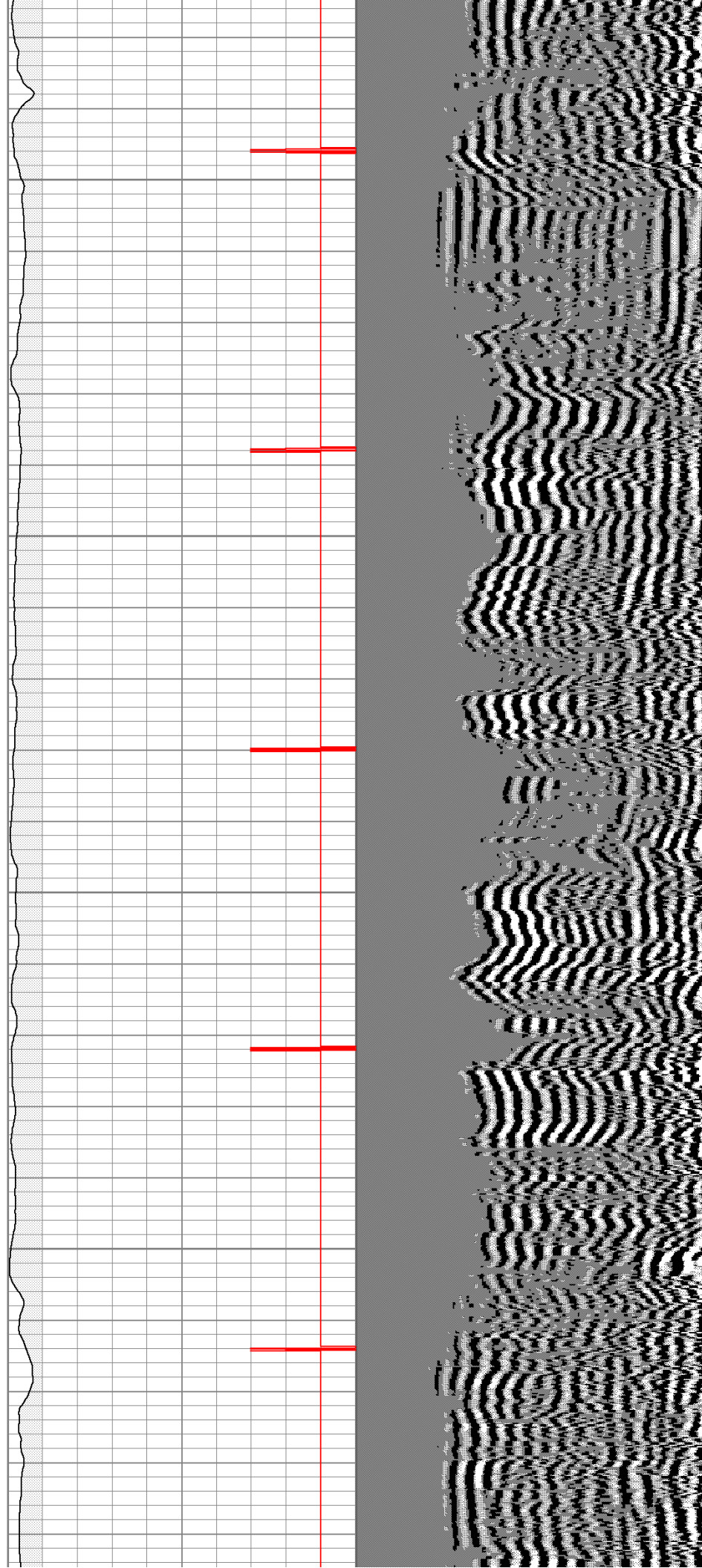


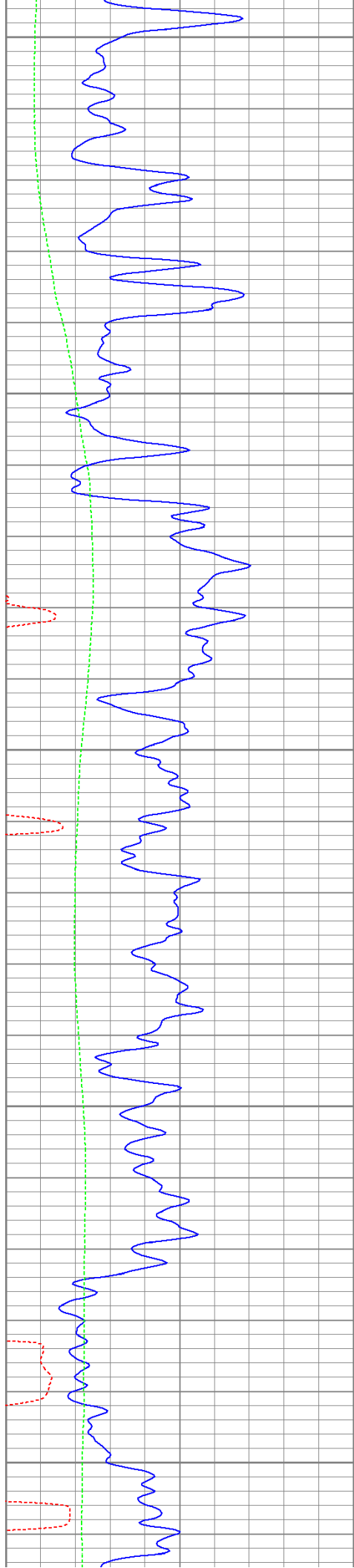
1750

1800

1850

1900





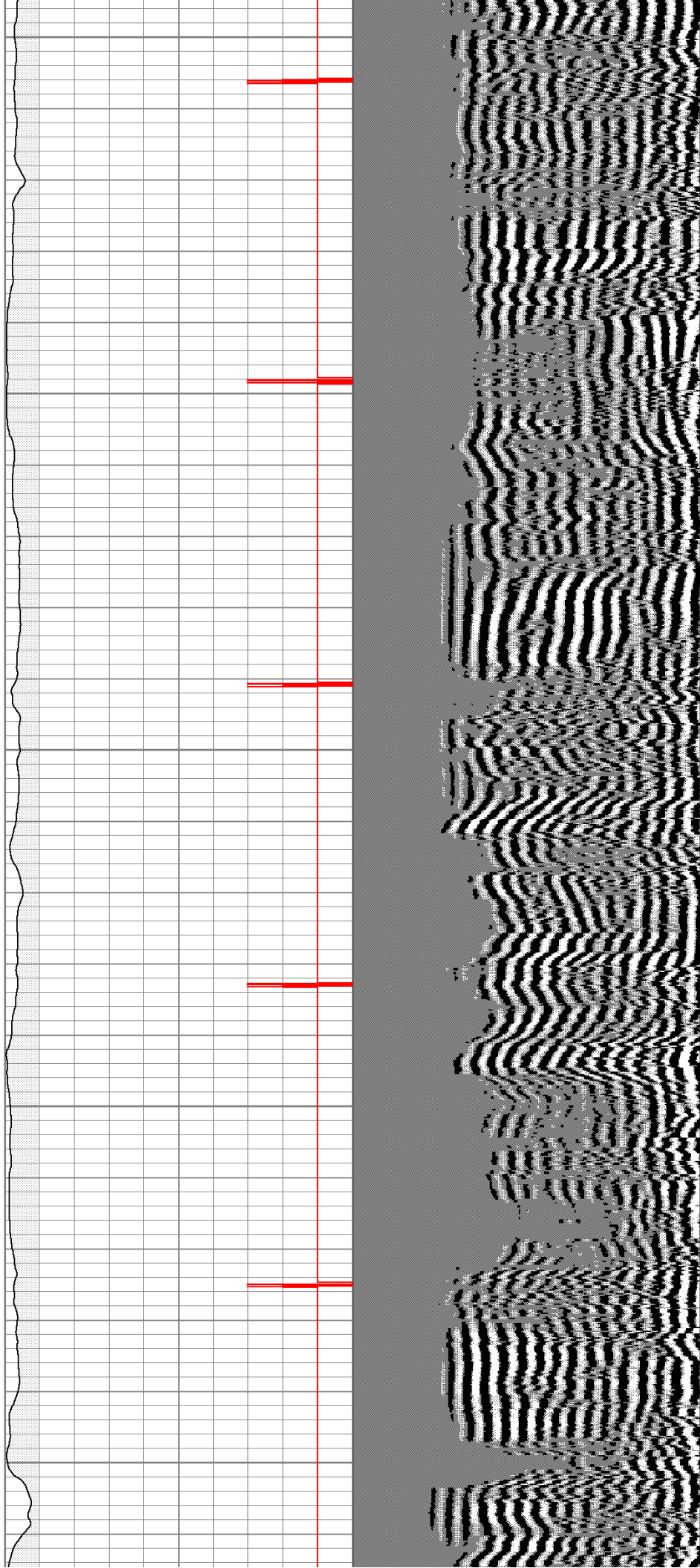
1950

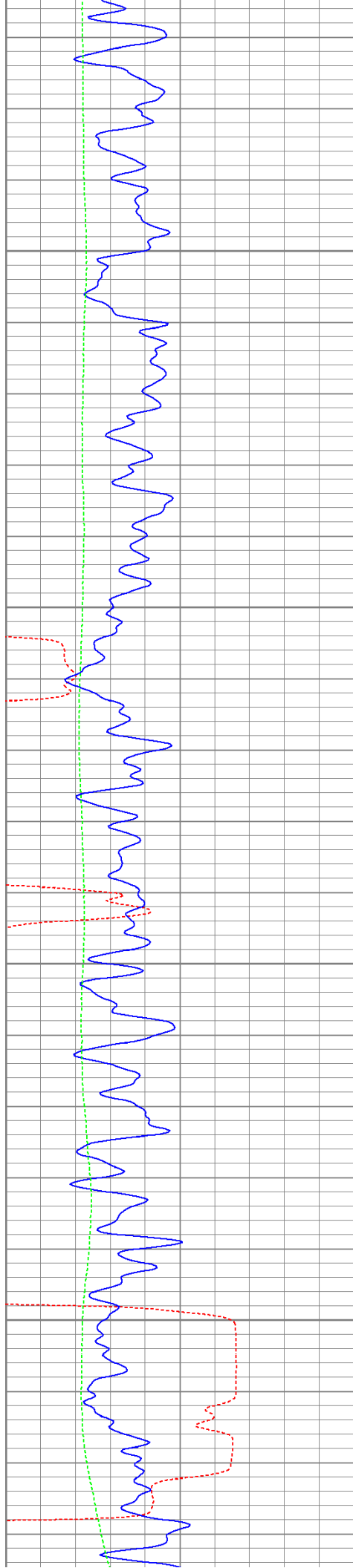
2000

2050

2100

2150





2200

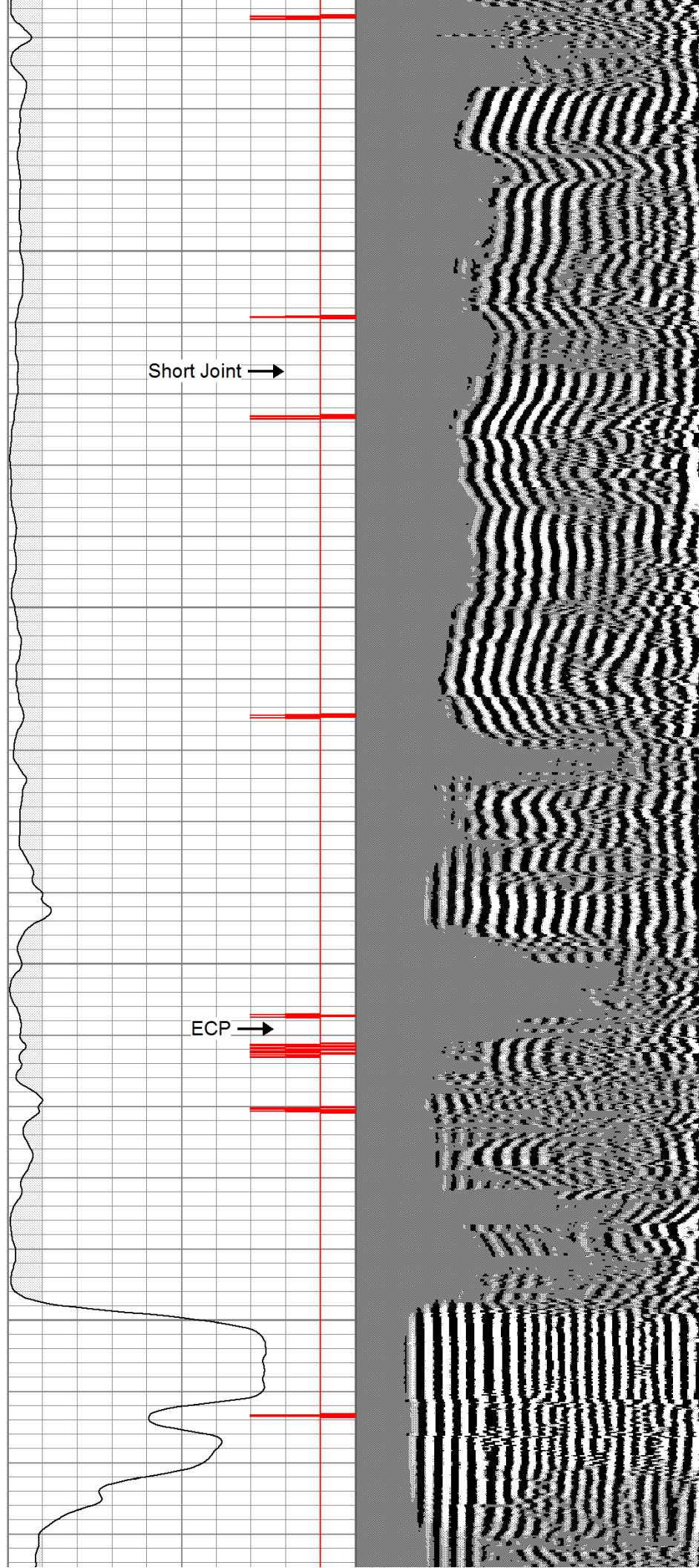
2250

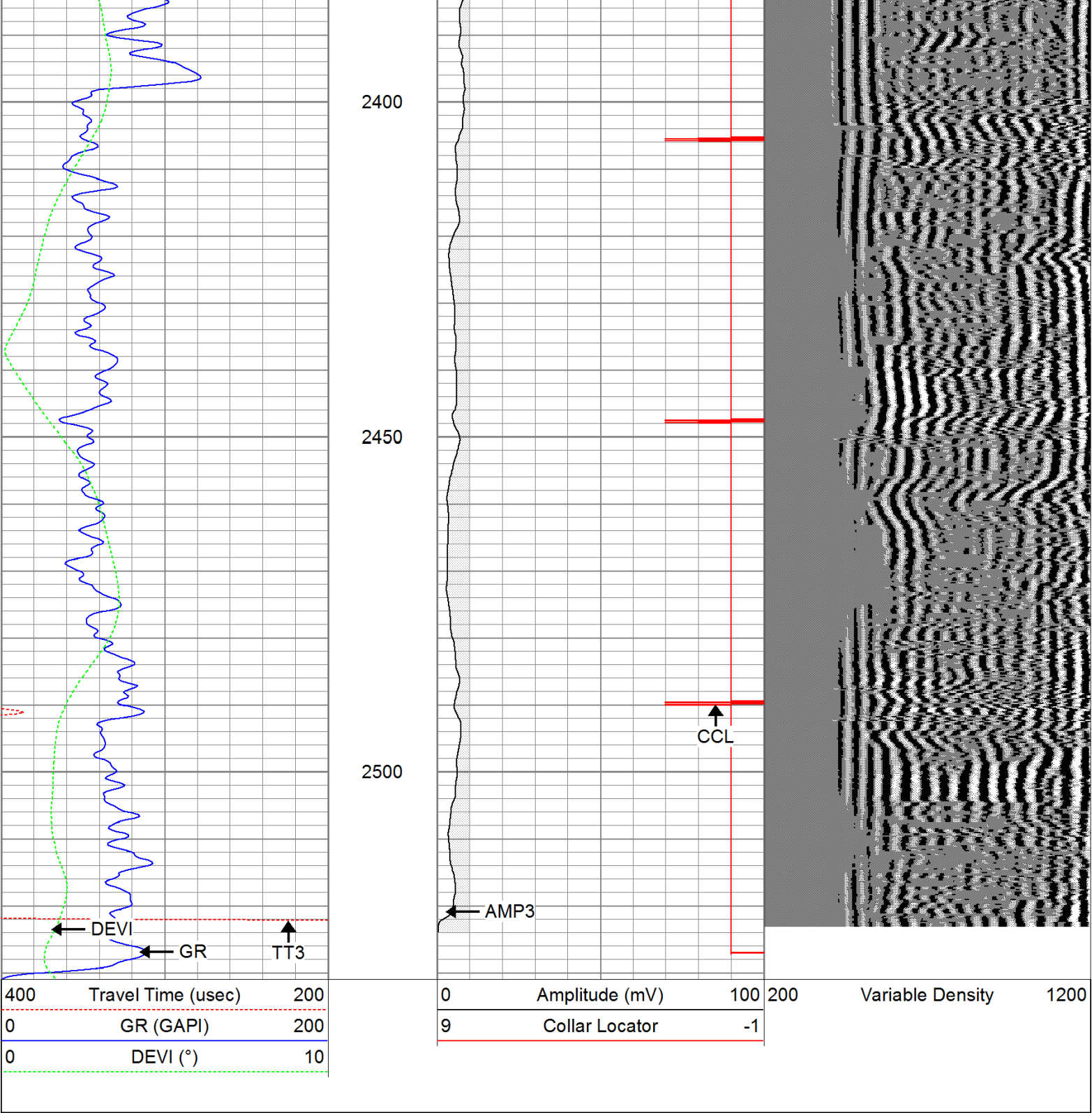
2300

2350

Short Joint →

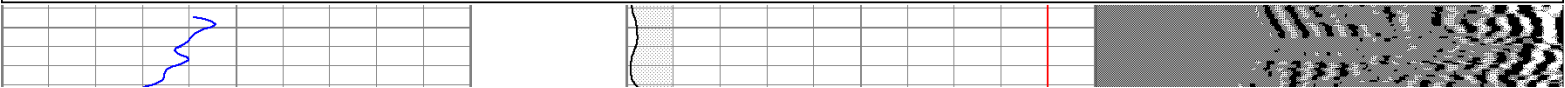
ECP →

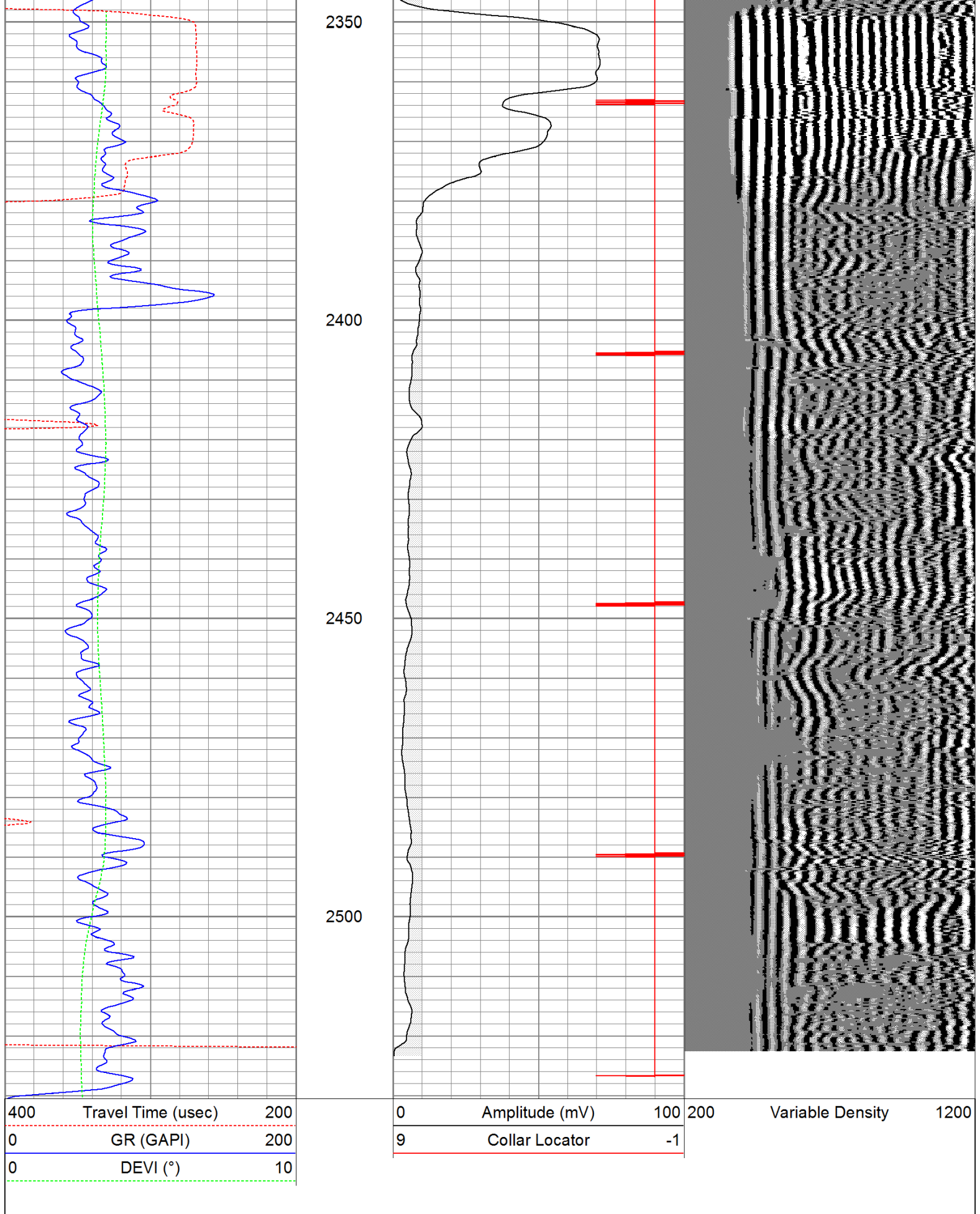




Database File:		timbale71911b.db			
Dataset Pathname:		pass1.1			
Presentation Format:		cbldig			
Dataset Creation:		Tue Jul 19 15:20:40 2011 by Calc Open-Cased 110302			
Charted by:		Depth in Feet scaled 1:240			

400	Travel Time (usec)	200	0	Amplitude (mV)	100	200	Variable Density	1200
0	GR (GAPI)	200	9	Collar Locator	-1			
0	DEVI (°)	10						





Calibration Report

Database File: timbale71911b.db
Dataset Pathname: pass1

Gamma Ray Calibration Report

Serial Number: 080616
 Tool Model: 275D_INC
 Performed: Wed May 04 17:31:09 2011

 Calibrator Value: 200.0 GAPI

 Background Reading: 50.0 cps
 Calibrator Reading: 250.0 cps

 Sensitivity: 1.0000 GAPI/cps

Inclinometer Calibration Report

Performed: Wed May 04 17:39:54 2011


	Low Read.	High Read.	Low Ref.	High Ref.	
X Accelerometer	-3585.20	3595.40	-1.00	1.00	gee
Y Accelerometer	-3619.40	3520.00	-1.00	1.00	gee
Z Accelerometer					


Cement Bond Log Calibration Report

Serial Number: 081024
 Tool Model: PROBEDIITALCBL
 Performed: Tue Jul 19 09:25:23 2011

 Depth: 93.4615 ft
 Casing Diameter: 5.5 in

	3' Spacing	5' Spacing	
Signal Zero:	0	0	mV
Calibrated Amplitude:	85	85	mV
Reading at Signal Zero:	-0.00874023	-0.0092041	V
Reading in Free Pipe:	1.72476	1.66304	V
Gain:	49.0339	50.83	
Offset:	0.428567	0.467844	

Sensor	Offset (ft)	Schematic	Description	Len (ft)	OD (in)	Wt (lb)	
WVF3 WVF5	9.04		None	0.75	1.50	5.00	
			Star	0.29	1.50	0.50	
	8.04		CBL-PROBEDIITALCBL (081024) PROBE DIGITAL CBL	8.75	2.75	106.50	
			Star	0.29	1.50	0.50	

CCL	3.50		GR-275D_INC (080616) 2-3/4" GR-CCL with Inclination	4.50	2.75	50.00
ACCX	1.83					
ACCY	1.83					
ACCZ	1.83					
GR	0.83					
<p>Dataset: timbale71911b.db: field/well/run1/pass1</p> <p>Total Length: 14.58 ft</p> <p>Total Weight: 162.50 lb</p> <p>O.D. 2.75 in</p>						