

Cement Bond Log

Company	Pioneer Natural Resources		
Well	Timbale 32-12		
Field	Purgatorie River		
County	Las Animas	State	Colorado
Location:	API #: 05 071 09817 00		Other Services
SEC 12 TWP 33S RGE 68W		DEVI	
Permanent Datum	GL	Elevation	7894'
Log Measured From	KB 9' AGL	K.B. 7903'	D.F. 7894'
Drilling Measured From	KB	G.L. 7894'	

Date	6-27-11
Run Number	one
Depth Driller	2548'
Depth Logger	2531'
Bottom Logged Interval	2529'
Top Log Interval	Surface
Open Hole Size	7 7/8
Type Fluid	water
Density / Viscosity	///
Max. Recorded Temp.	///
Estimated Cement Top	1563'
Time Well Ready	4:30 P.M.
Time Logger on Bottom	4:45 P.M.
Equipment Number	T590
Location	Trinidad
Recorded By	C. Sineros
Witnessed By	Martinez

Borehole Record		Tubing Record					
Run Number	Bit	From	To	Size	Weight	From	To
Casing Record	Size	Wgt/Ft	Top	Bottom			
Surface String	8 5/8"			552'			
Prot. String							
Production String	5 1/5"						
Liner							

<<< Fold Here >>>

All interpretations are opinions based on inferences from electrical or other measurements and we cannot and do not guarantee the accuracy or correctness of any interpretation, and we shall not, except in the case of gross or willful negligence on our part, be liable or responsible for any loss, costs, damages, or expenses incurred or sustained by anyone resulting from any interpretation made by any of our officers, agents or employees. These interpretations are also subject to our general terms and conditions set out in our current Price Schedule.

Comments

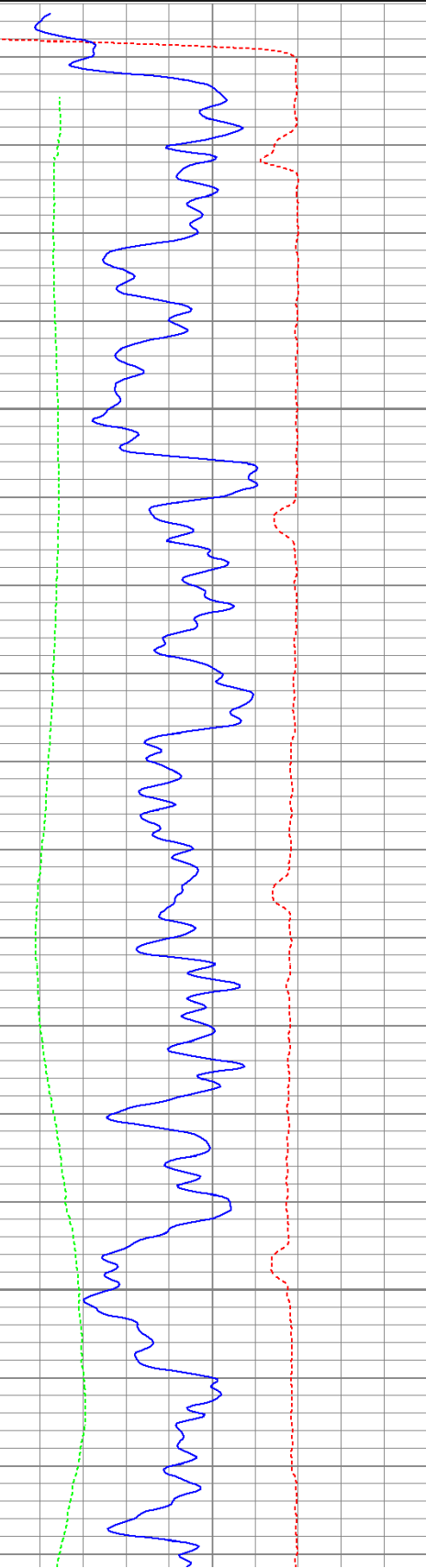
Directions:
Rancho Escondido, turn left at trash dumpsters, go thru gate on cattle gaurd, straight to top of hill and go right, 2nd right to location.

Database File: timbale62711b.db
Dataset Pathname: pass3.1
Presentation Format: cbldig
Dataset Creation: Mon Jun 27 17:46:15 2011 by Calc Open-Cased 110302
Charted by: Depth in Feet scaled 1:240

400	Travel Time (usec)	200
0	GR (GAPI)	200
0	DEVI (°)	10

0	Amplitude (mV)	100
9	Collar Locator	-1

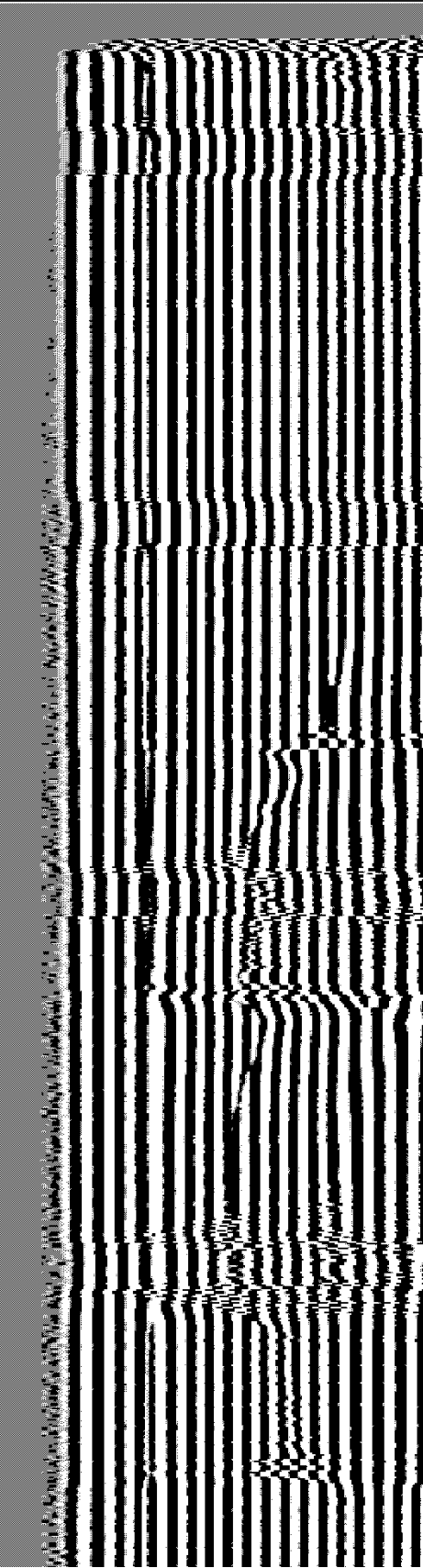
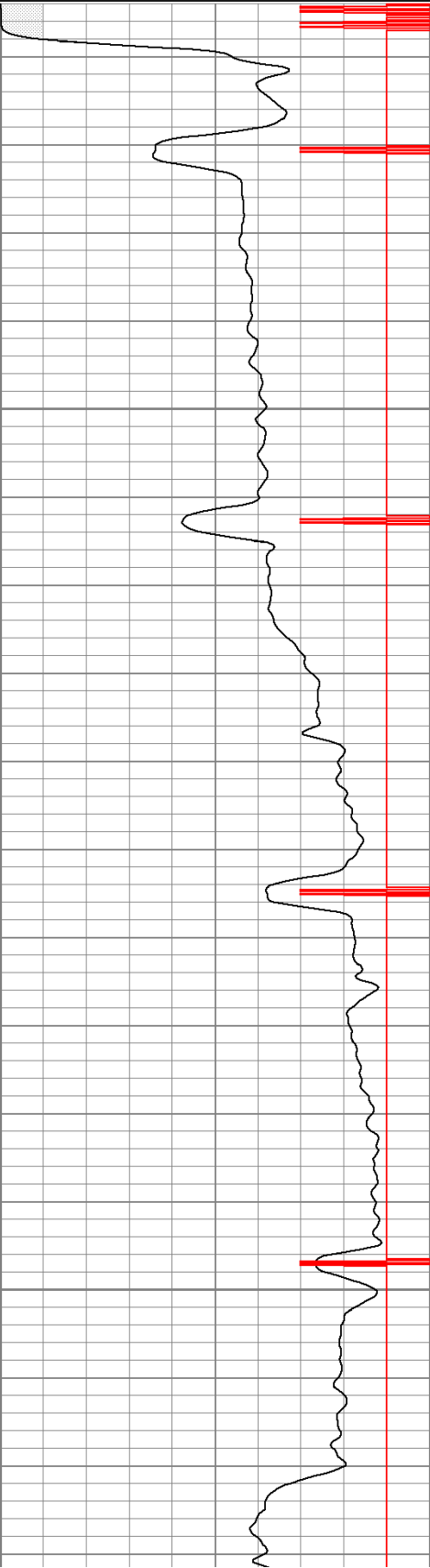
200 Variable Density 1200

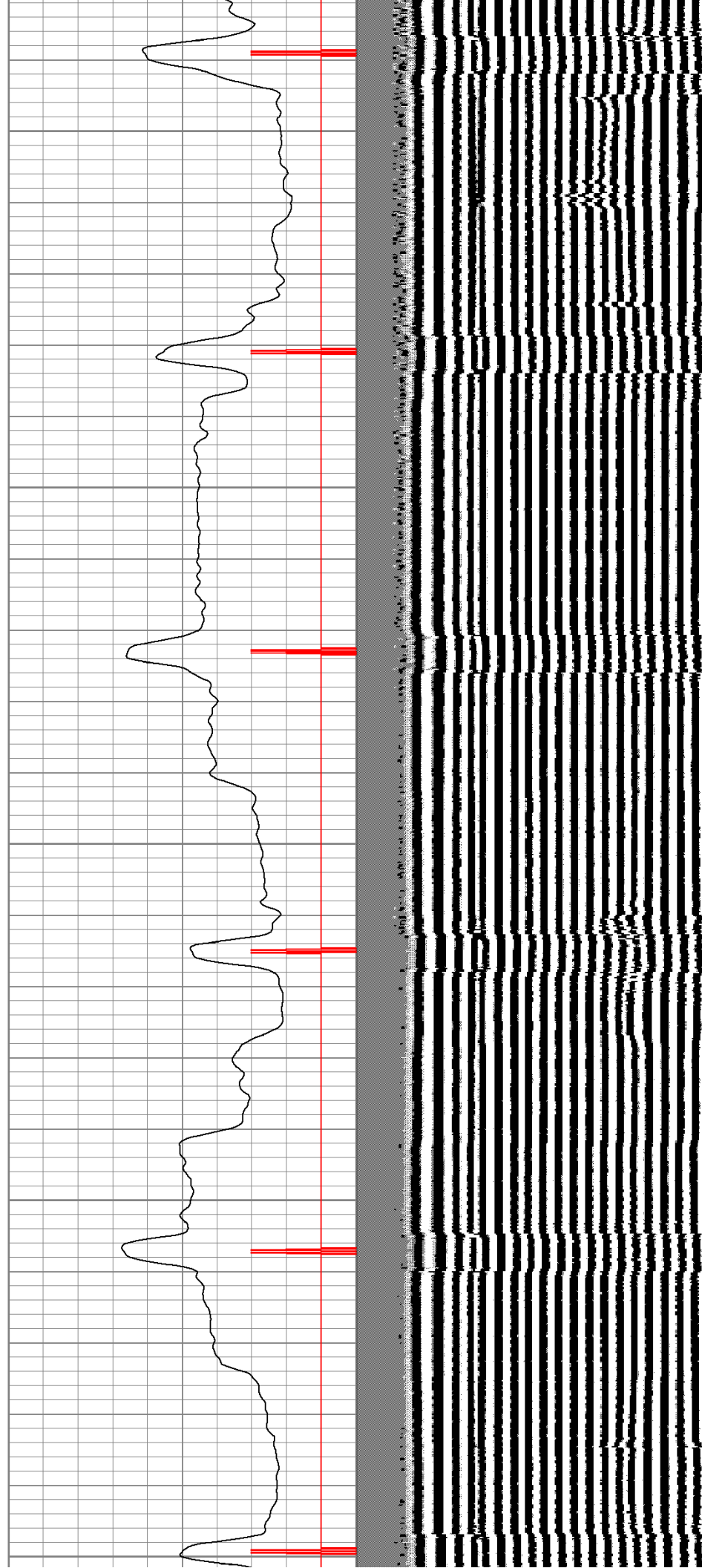
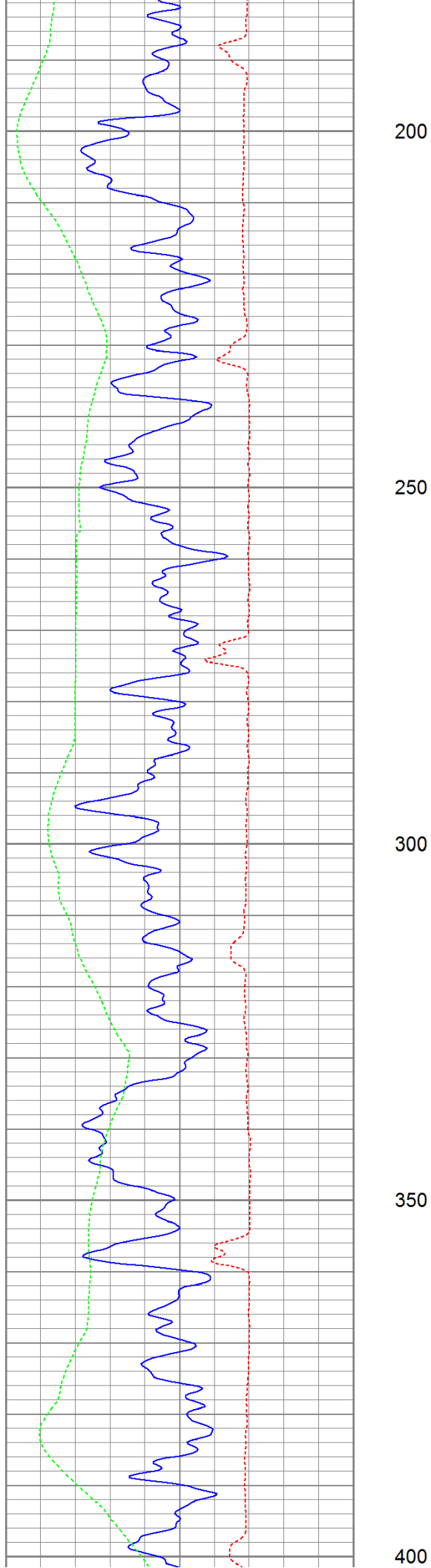


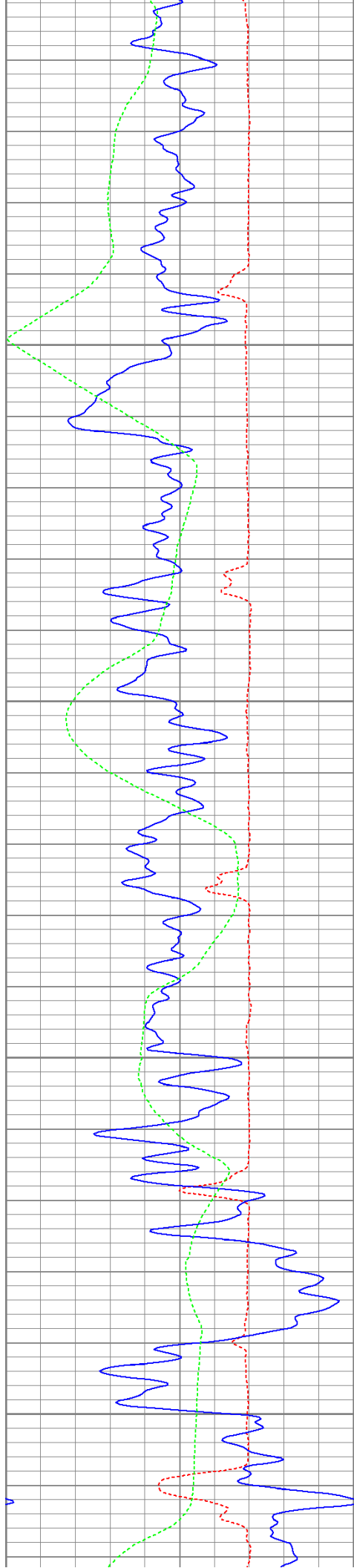
50

100

150





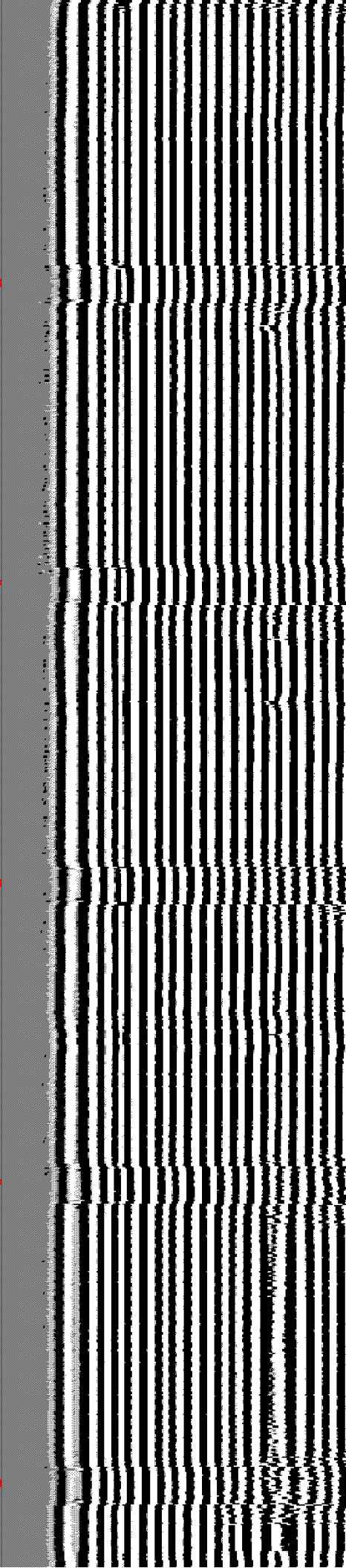
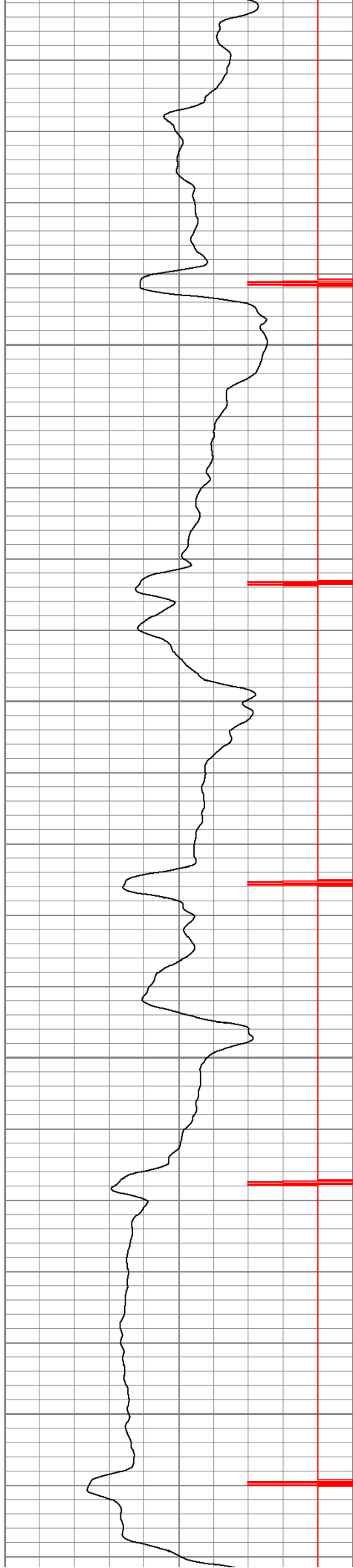


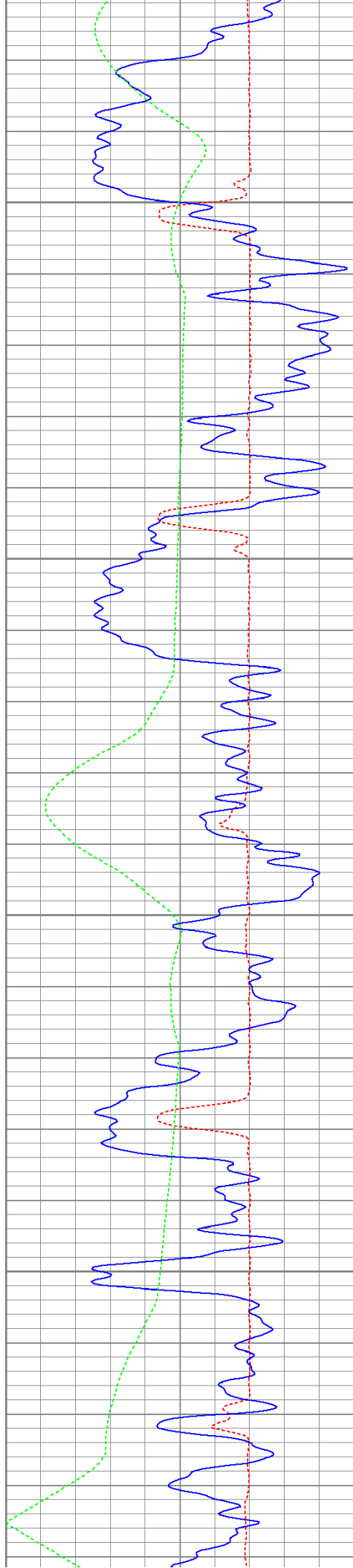
450

500

550

600



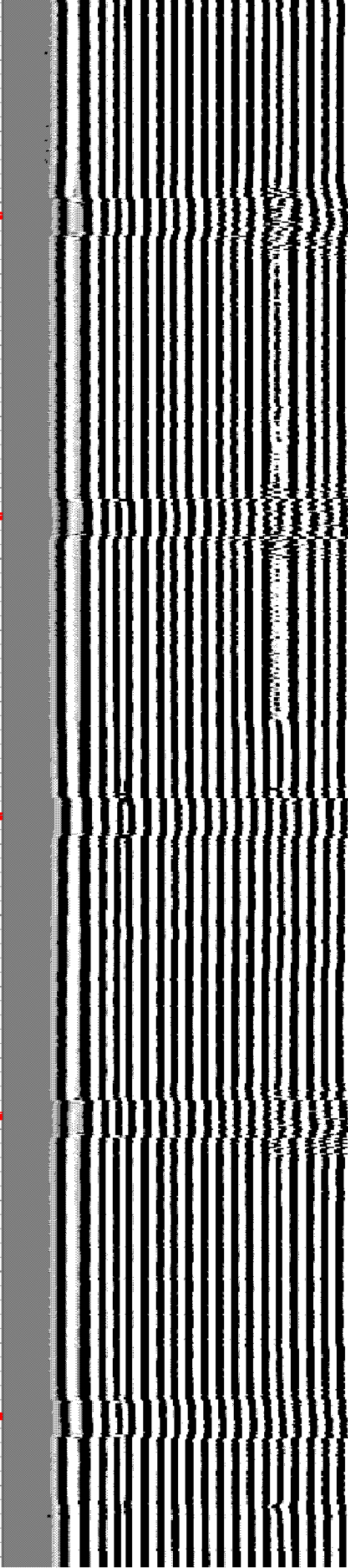
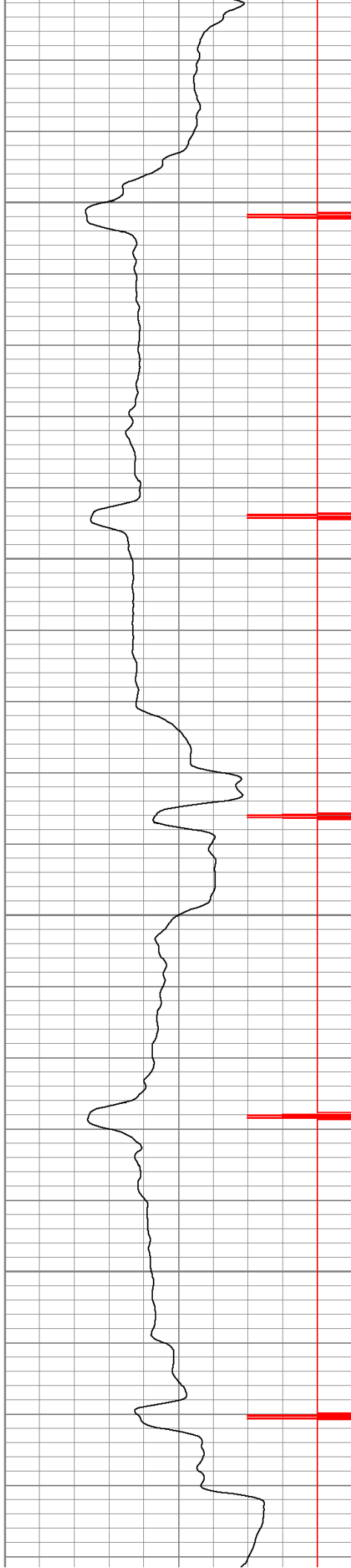


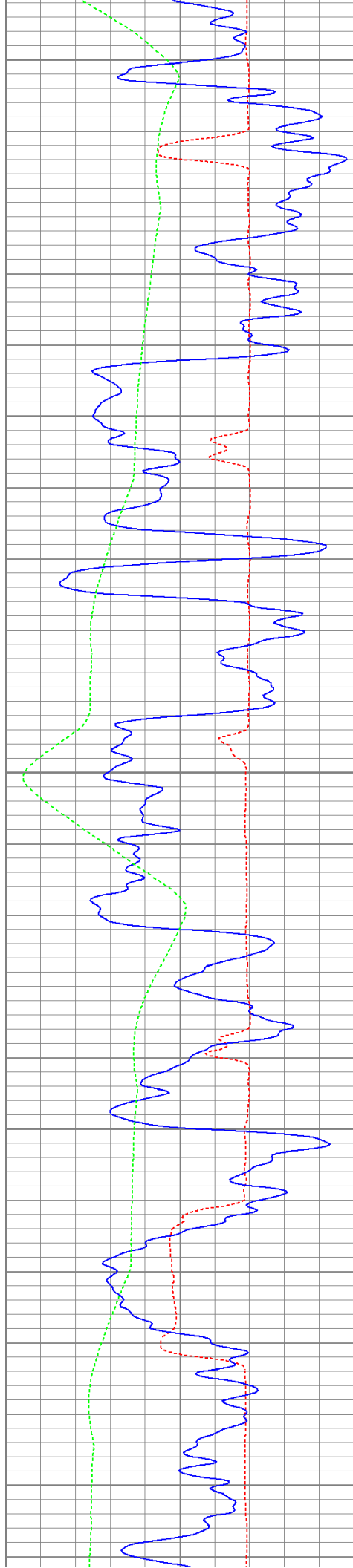
650

700

750

800





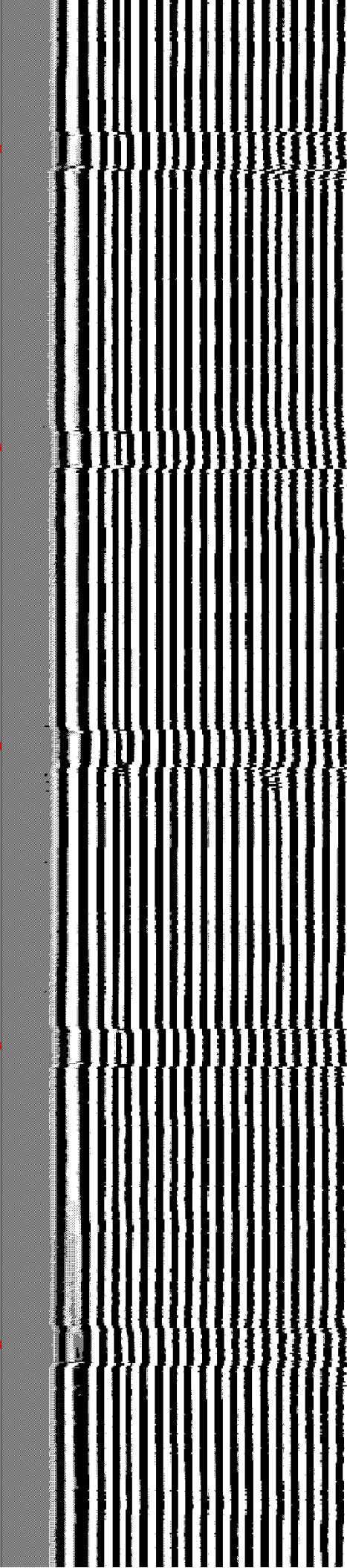
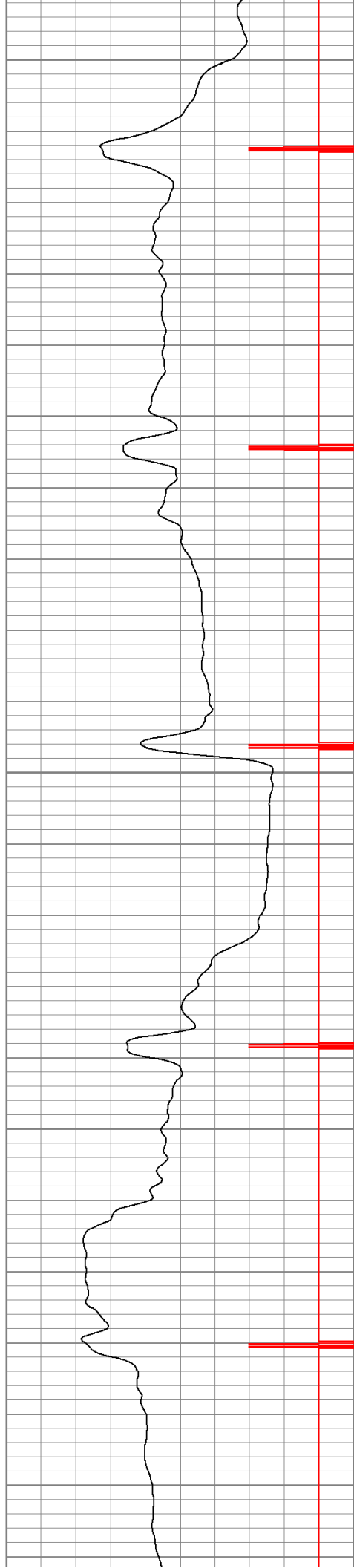
850

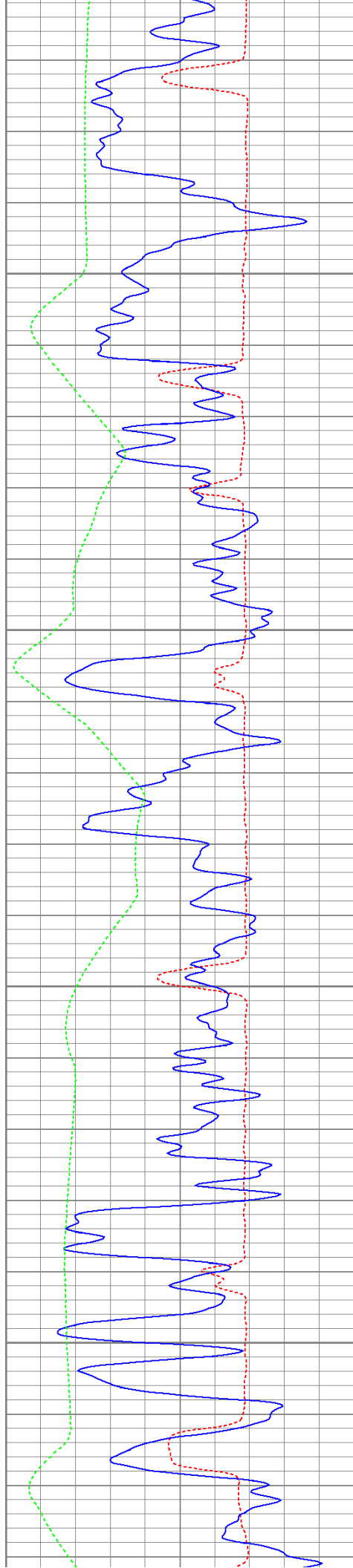
900

950

1000

1050



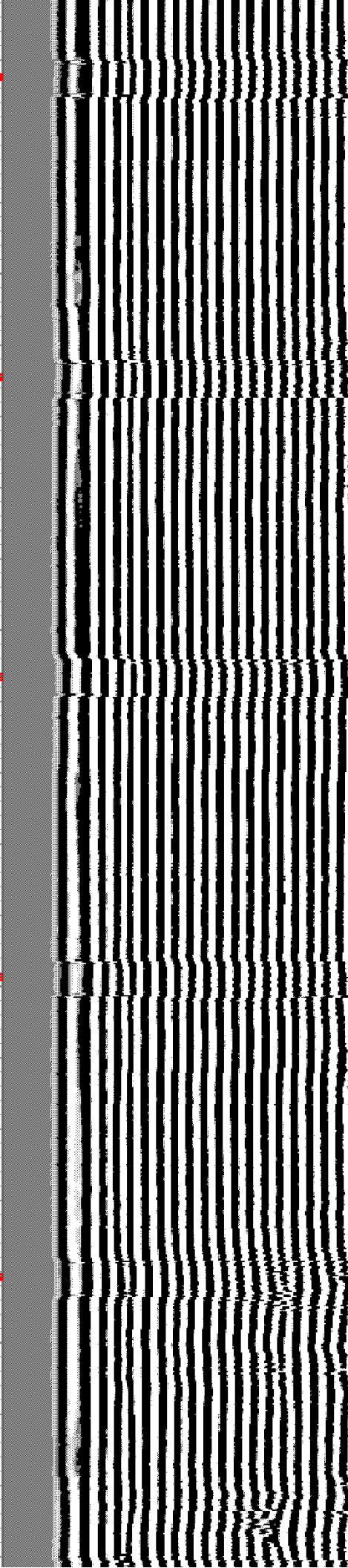
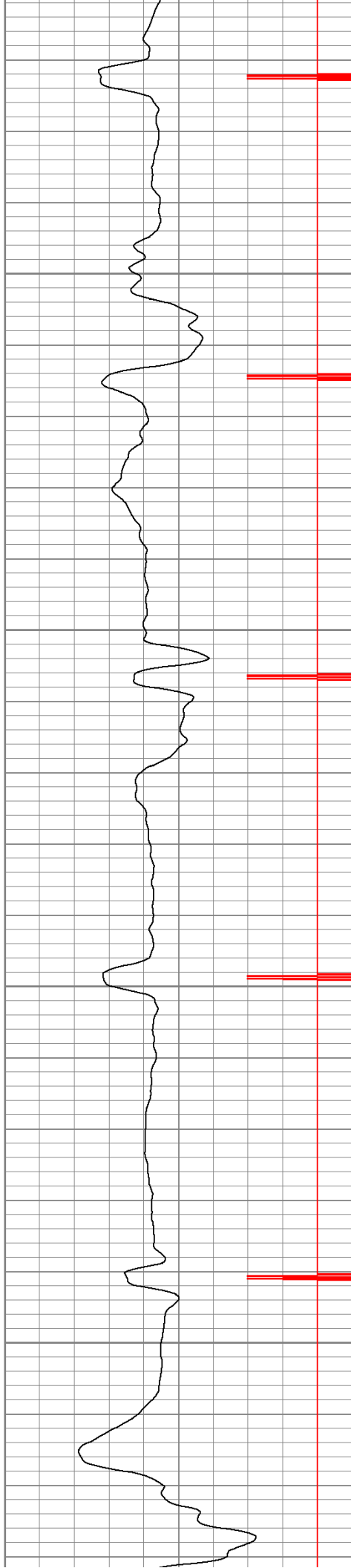


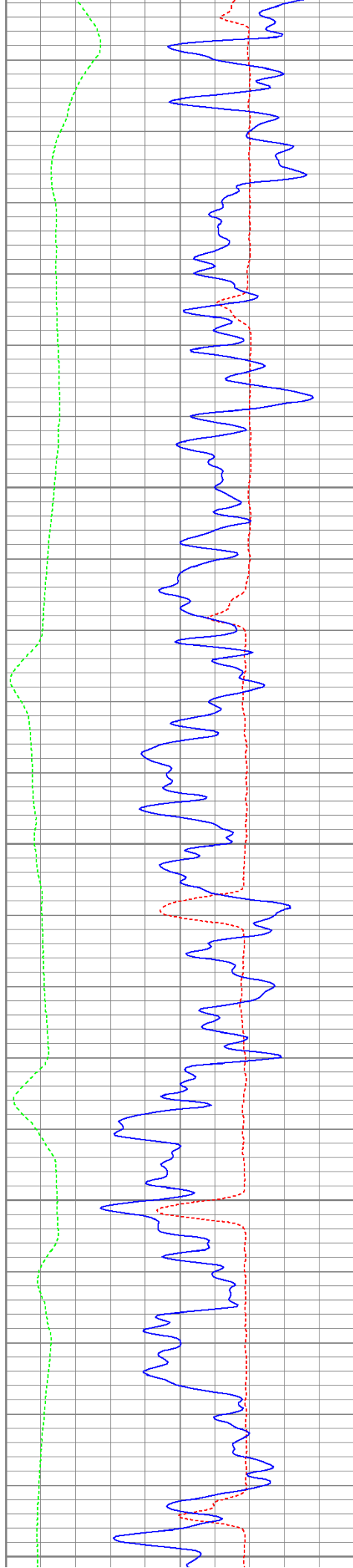
1100

1150

1200

1250





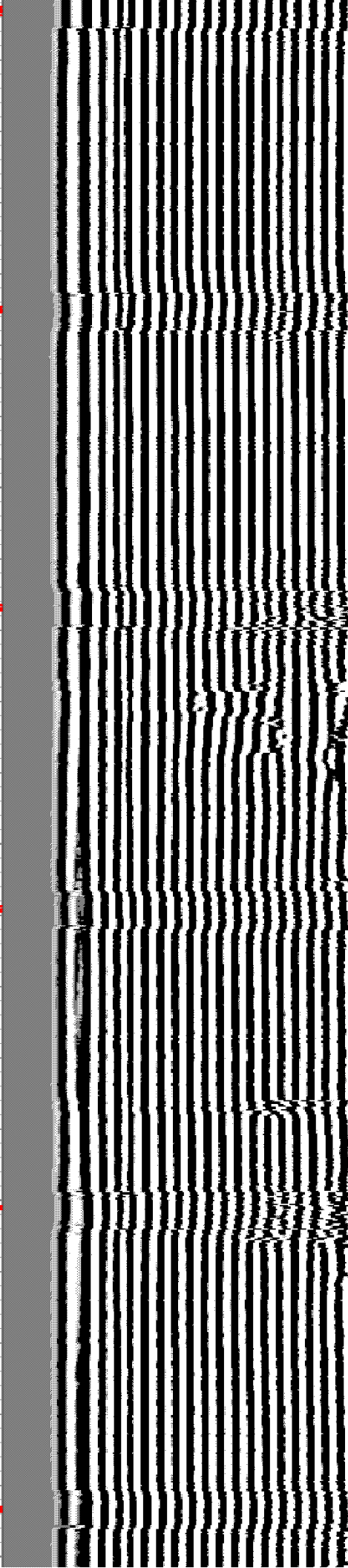
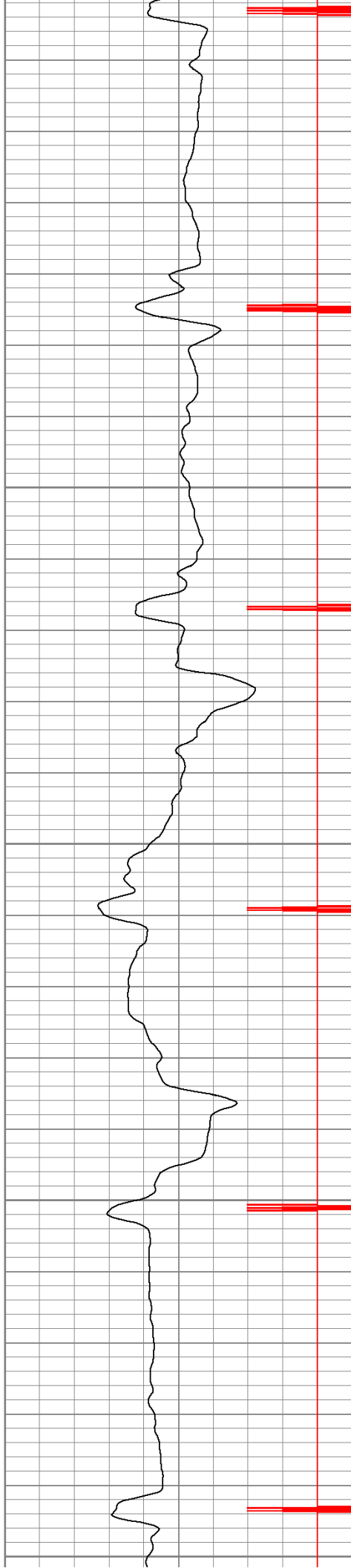
1300

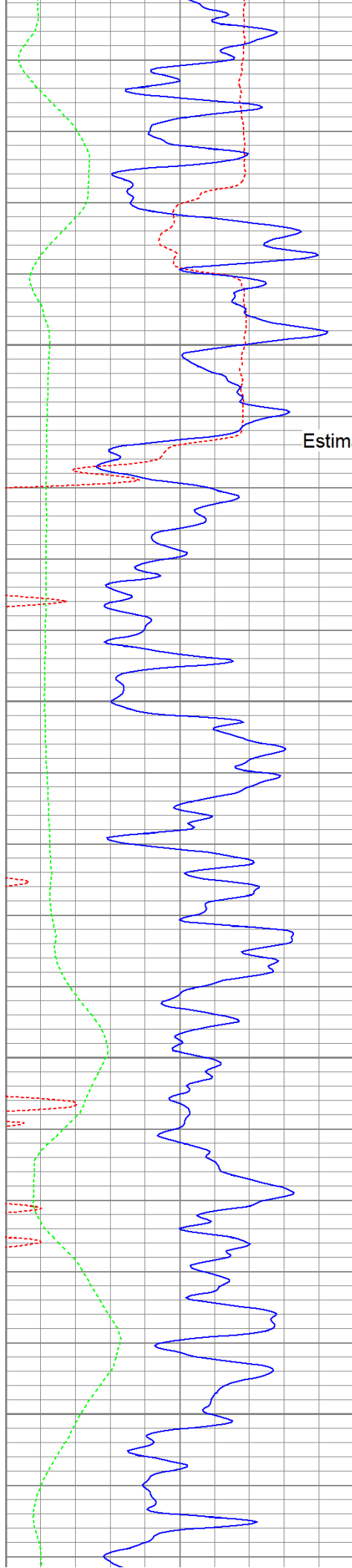
1350

1400

1450

1500





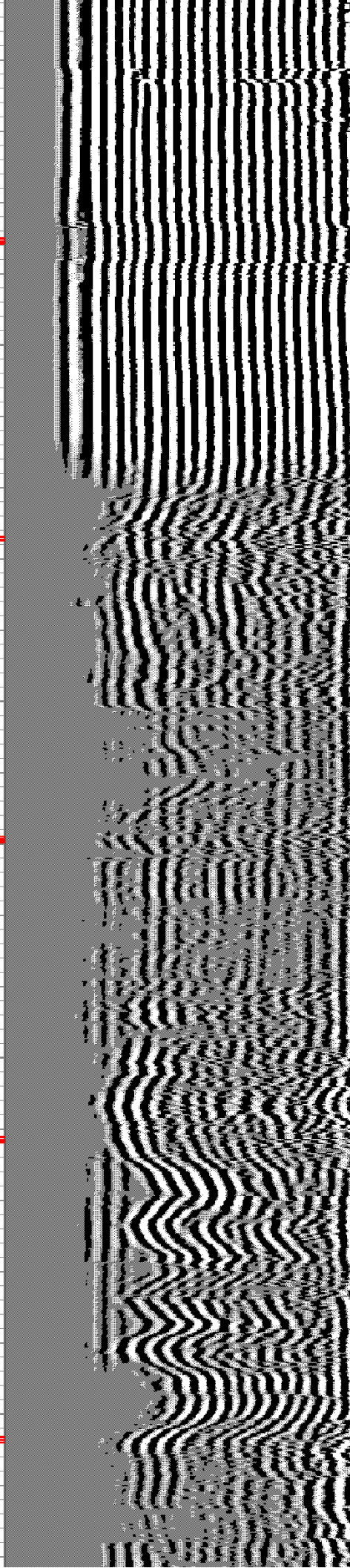
1550

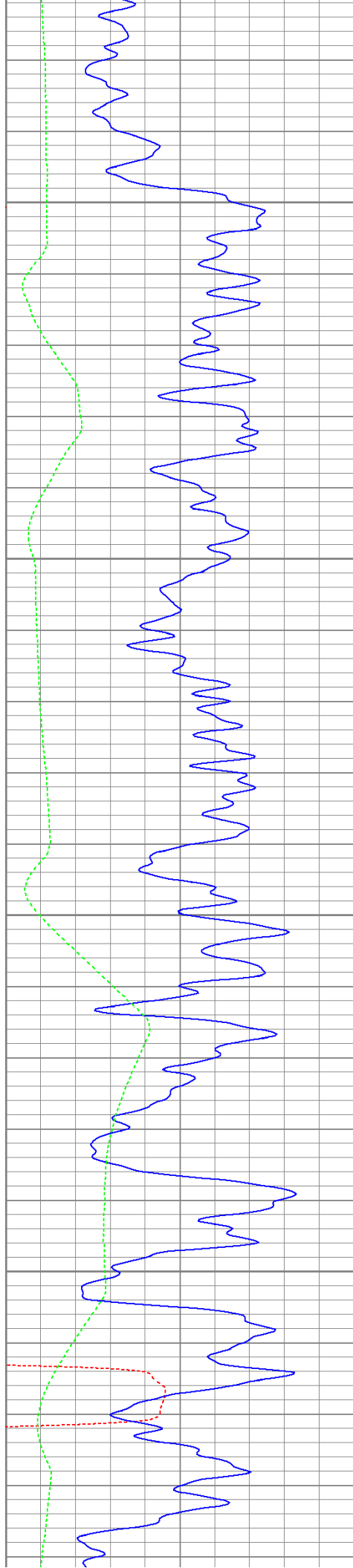
Estimated Top of Cement

1600

1650

1700



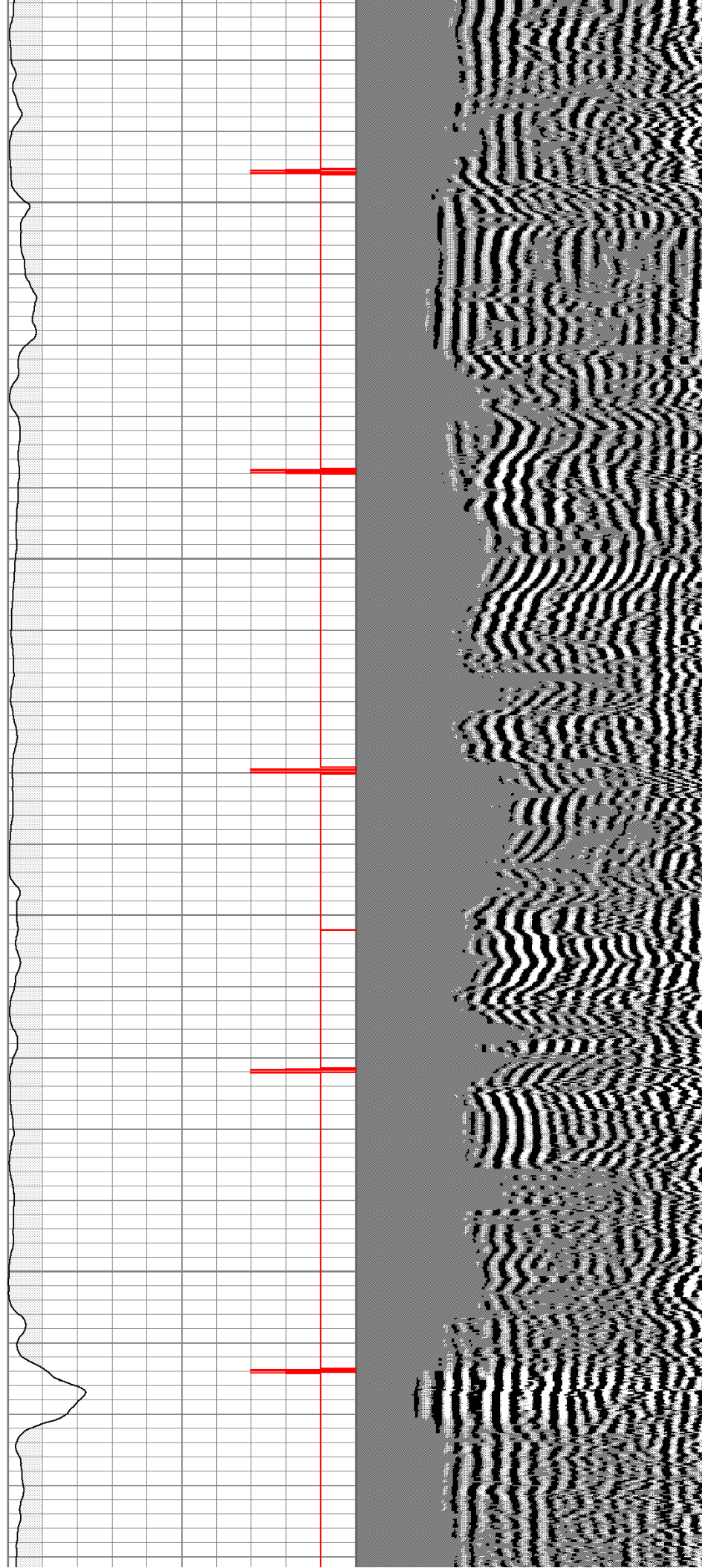


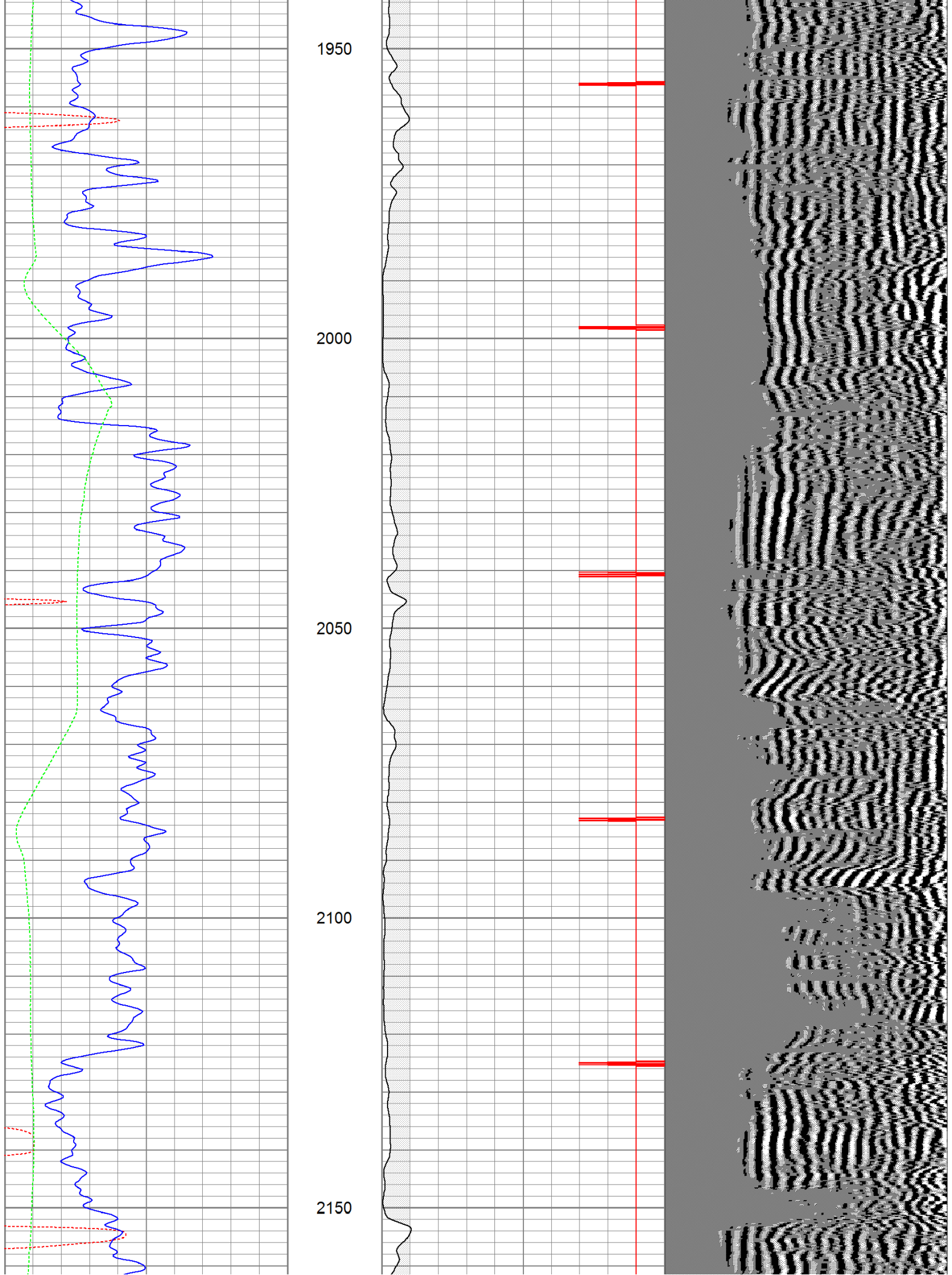
1750

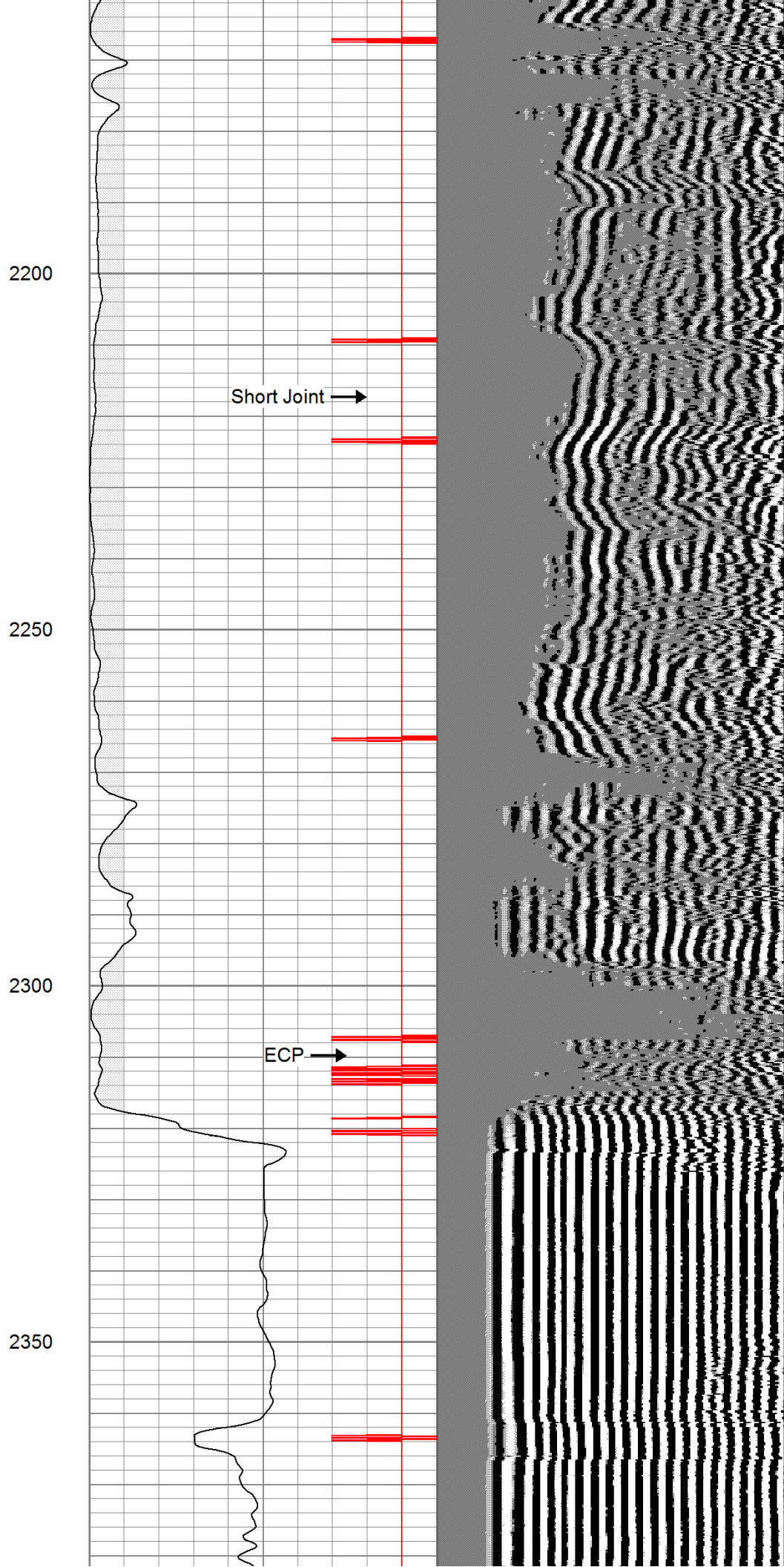
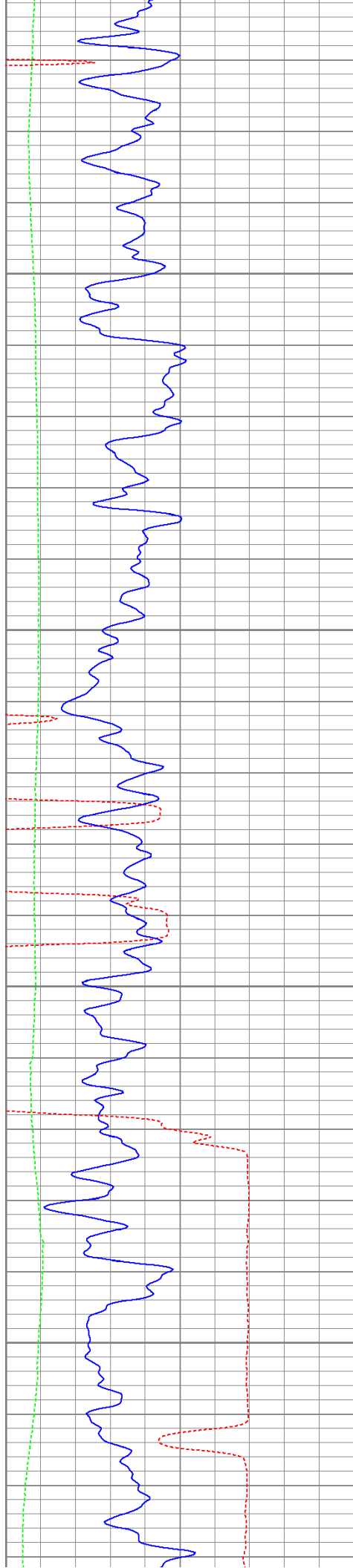
1800

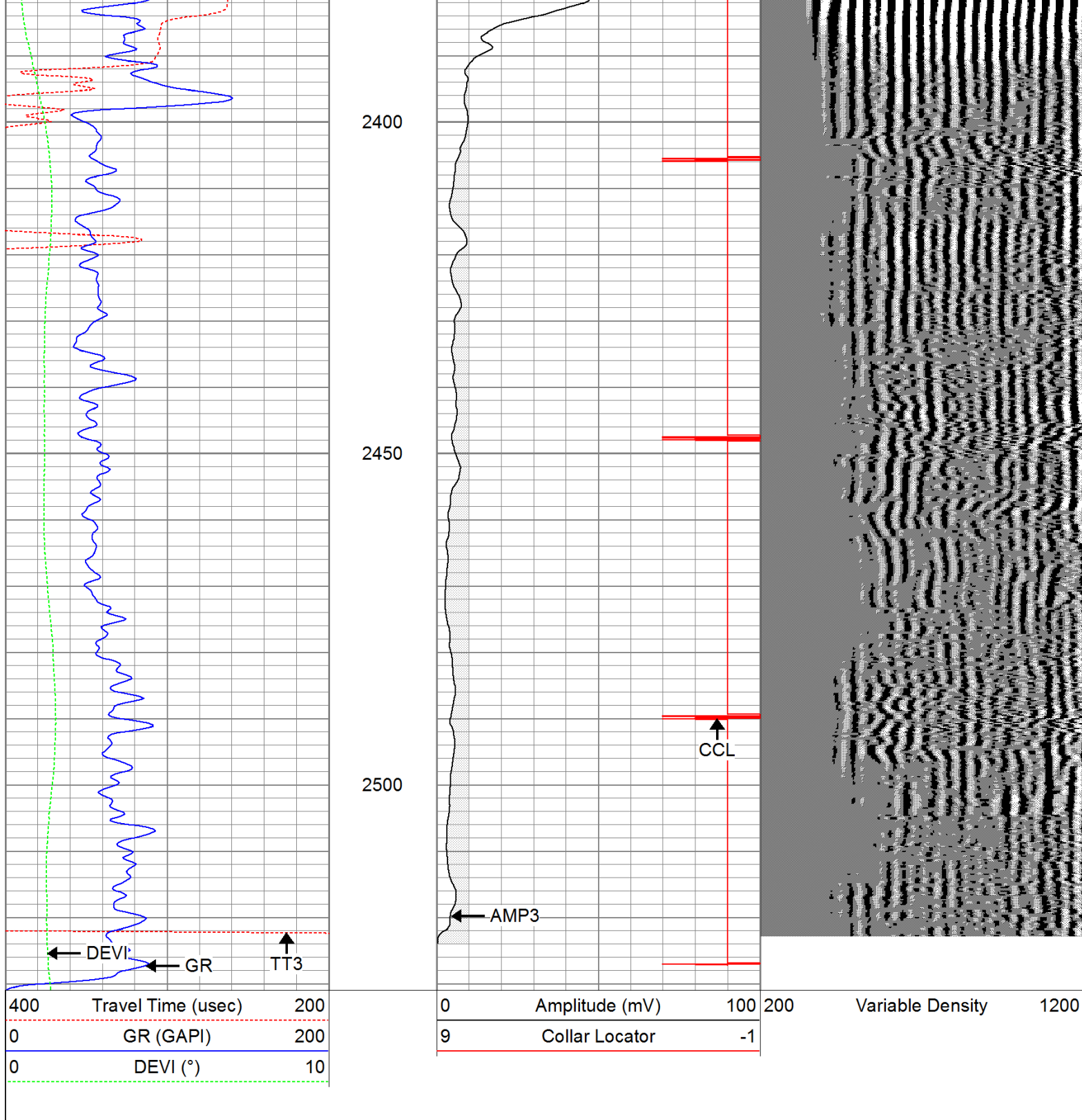
1850

1900





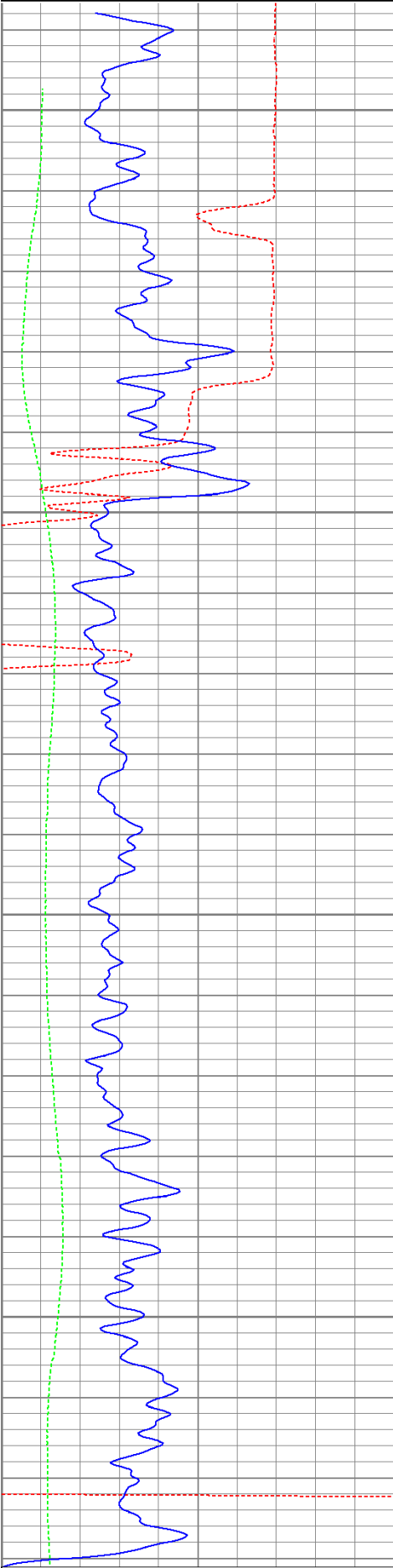
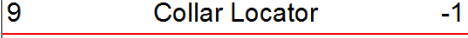
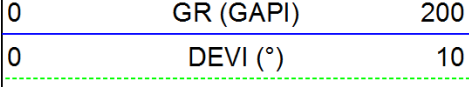




Repeat Pass

Database File: timbale62711b.db
 Dataset Pathname: pass2.1
 Presentation Format: cbl dig
 Dataset Creation: Mon Jun 27 17:35:43 2011 by Calc Open-Cased 110302
 Charted by: Depth in Feet scaled 1:240



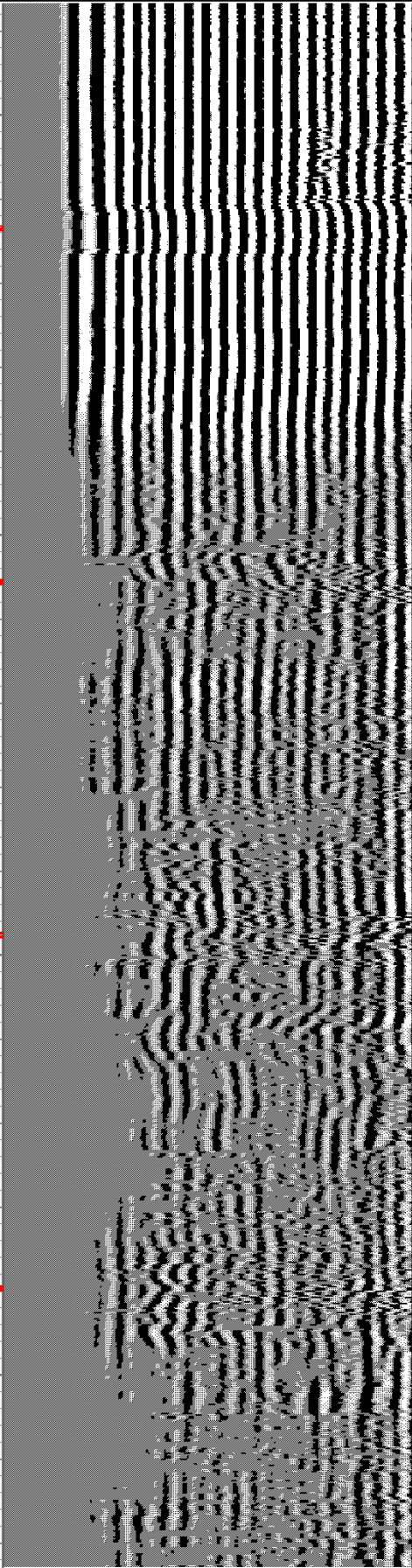
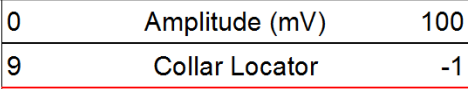
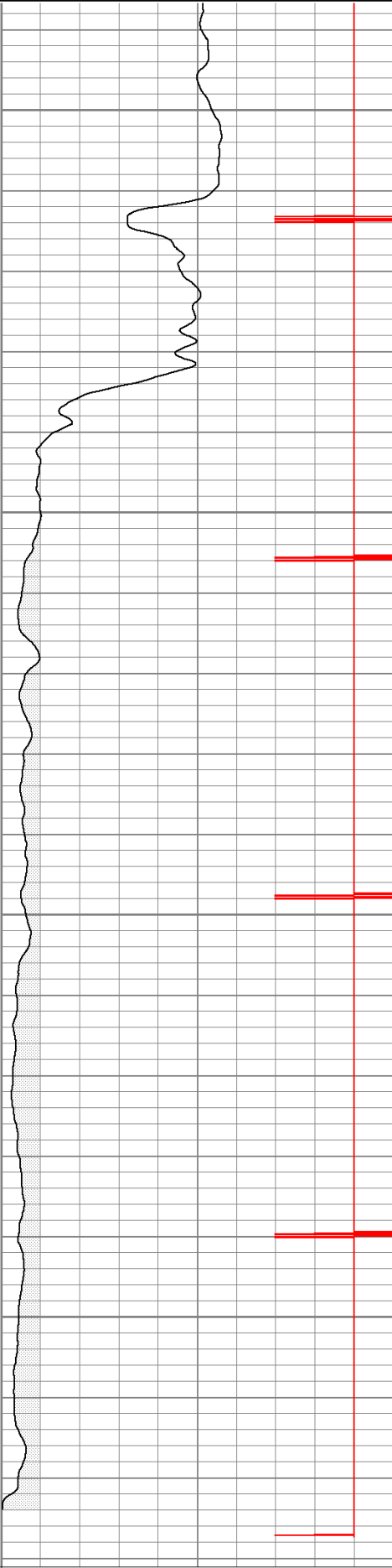


2350

2400

2450

2500



Calibration Report

Database File: timbale62711b.db

Dataset Pathname: pass2

Dataset Creation: Mon Jun 27 16:52:02 2011 by Log Open-Cased 110302

Gamma Ray Calibration Report

Serial Number: 080616
 Tool Model: 275D_INC
 Performed: Wed May 04 17:31:09 2011

Calibrator Value: 200.0 GAPI

Background Reading: 50.0 cps
 Calibrator Reading: 250.0 cps

Sensitivity: 1.0000 GAPI/cps

Inclinometer Calibration Report

Performed: Wed May 04 17:39:54 2011

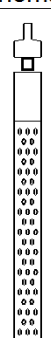
	Low Read.	High Read.	Low Ref.	High Ref.	
X Accelerometer	-3585.20	3595.40	-1.00	1.00	gee
Y Accelerometer	-3619.40	3520.00	-1.00	1.00	gee
Z Accelerometer					

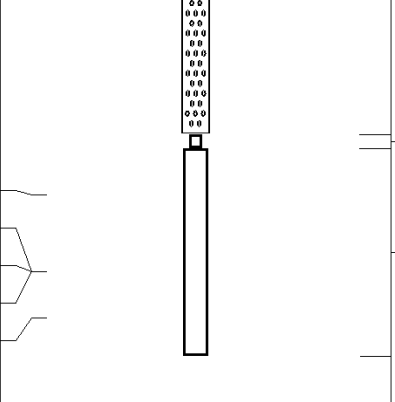
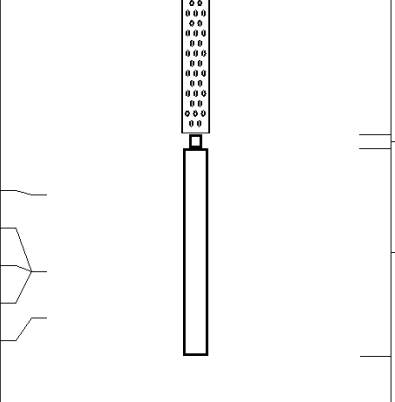
Cement Bond Log Calibration Report

Serial Number: 081024
 Tool Model: PROBEDIITALCBL
 Performed: Mon Jun 27 16:39:48 2011

Depth: 140.471 ft
 Casing Diameter: 5.5 in

	3' Spacing	5' Spacing	
Signal Zero:	0	0	mV
Calibrated Amplitude:	85	85	mV
Reading at Signal Zero:	-0.0095459	-0.00961914	V
Reading in Free Pipe:	1.91331	1.71543	V
Gain:	44.2052	49.274	
Offset:	0.421978	0.473973	

Sensor	Offset (ft)	Schematic	Description	Len (ft)	OD (in)	Wt (lb)
			None	0.75	1.50	5.00
			Star	0.29	1.50	0.50
WVF3	9.04		CBL-PROBEDIITALCBL (081024)	8.75	2.75	106.50
WVF5	8.04		PROBE DIGITAL CBL			

CCL	3.50		Star	0.29	1.50	0.50	
ACCX	1.83			GR-275D_INC (080616)	4.50	2.75	50.00
ACCY	1.83			2-3/4" GR-CCL with Inclination			
ACCZ	1.83						
GR	0.83						

Dataset:

timbale62711b.db: field/well/run1/pass2

Total Length:

14.58 ft

Total Weight:

162.50 lb

O.D.

2.75 in