

Company		Pioneer Natural Resources	
Well		Turlington 22-28	
Field		Purgatorie River	
County		Las Animas	
State		Colorado	
Location:		API #: 05 071 09820 00 2337' FNL & 1705' FWL SEC 28 TWP 31S RGE 65W Permanent Datum GL Log Measured From KB 4' AGL Drilling Measured From KB Elevation 7132' Other Services DEVI Elevation K.B. 7136' D.F. 7132' G.L. 7132'	
Date	7-22-11		
Run Number	one		
Depth Driller	1585'		
Depth Logger	1545'		
Bottom Logged Interval	1543'		
Top Log Interval	Surface		
Open Hole Size	7 7/8		
Type Fluid	water		
Density / Viscosity	///		
Max. Recorded Temp.	73 DEG F @ 770'		
Estimated Cement Top	150'		
Time Well Ready	Portable Mast		
Time Logger on Bottom	4:45 P.M.		
Equipment Number	T590		
Location	Trinidad		
Recorded By	C. Sisneros		
Witnessed By	Mr. John Menard		
Borehole Record		Tubing Record	
Run Number	Bit	From	To
Casing Record	Size	Wgt/Ft	Top
Surface String	8 5/8"		770'
Prot. String			
Production String	5 1/5"		TD
Liner			

<<< Fold Here >>>

All interpretations are opinions based on inferences from electrical or other measurements and we cannot and do not guarantee the accuracy or correctness of any interpretation, and we shall not, except in the case of gross or willful negligence on our part, be liable or responsible for any loss, costs, damages, or expenses incurred or sustained by anyone resulting from any interpretation made by any of our officers, agents or employees. These interpretations are also subject to our general terms and conditions set out in our current Price Schedule.

## Comments

Logged under 1000 PSI.

## Directions:

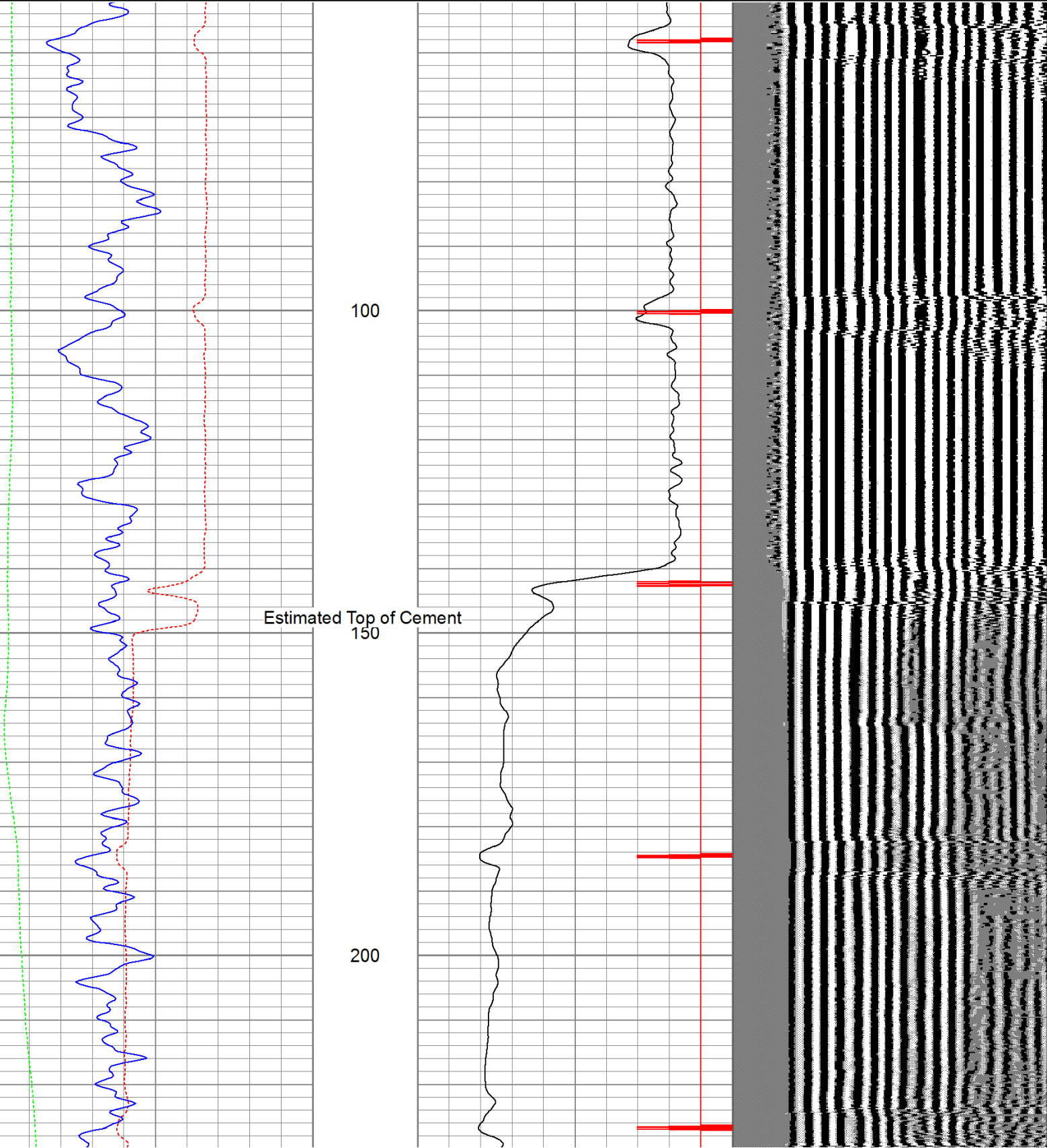
Ludlow to four corners, go left, fourth left, go thru gate, stay straight, go thru second gate, 2nd left to location.

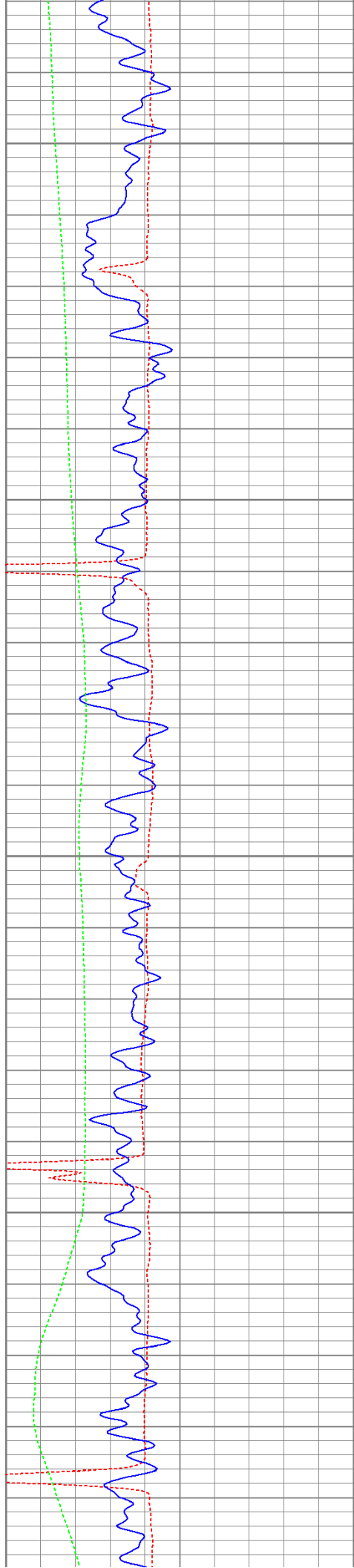
Database File: turlington72211b.db  
Dataset Pathname: pass2  
Presentation Format: cbldig  
Dataset Creation: Fri Jul 22 16:44:07 2011 by Log Open-Cased 110302  
Charted by: Depth in Feet scaled 1:240

400	Travel Time (usec)	200
0	GR (GAPI)	200
0	DEVI (°)	10

0	Amplitude (mV)	100
9	Collar Locator	-1

200 Variable Density 1200





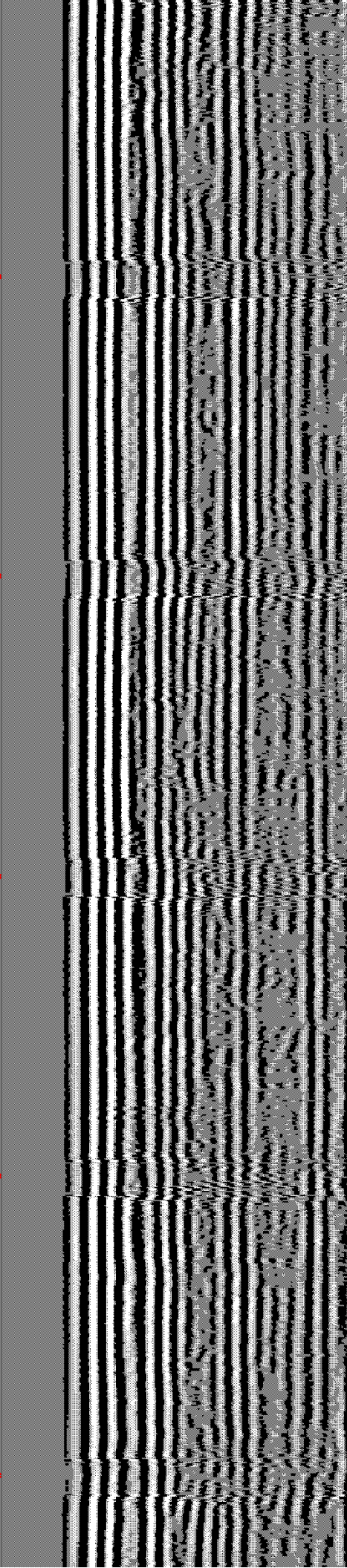
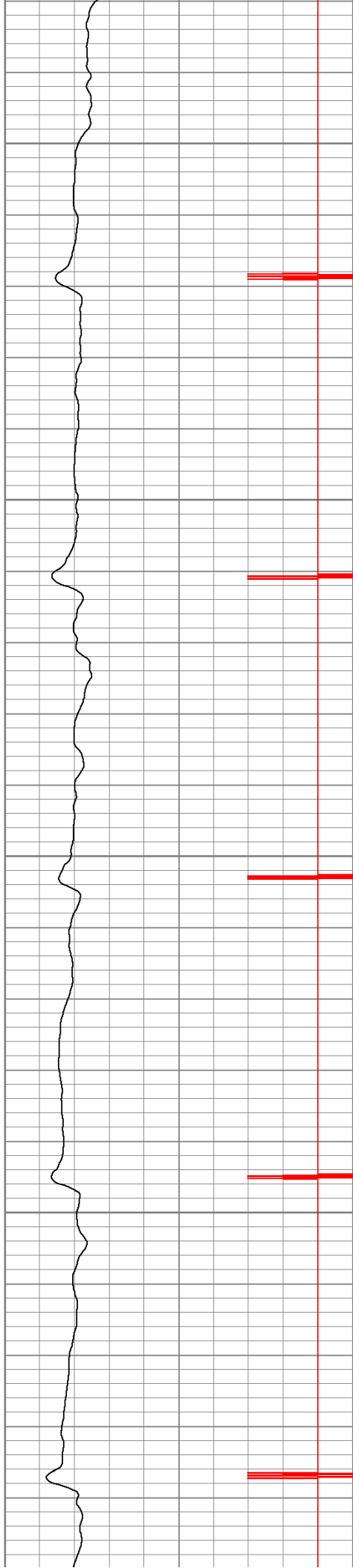
250

300

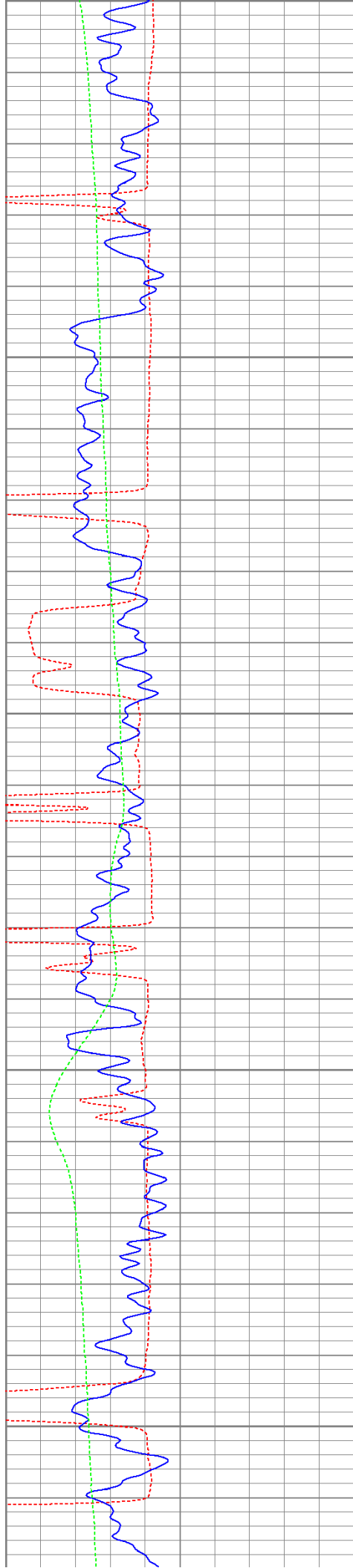
350

400

450







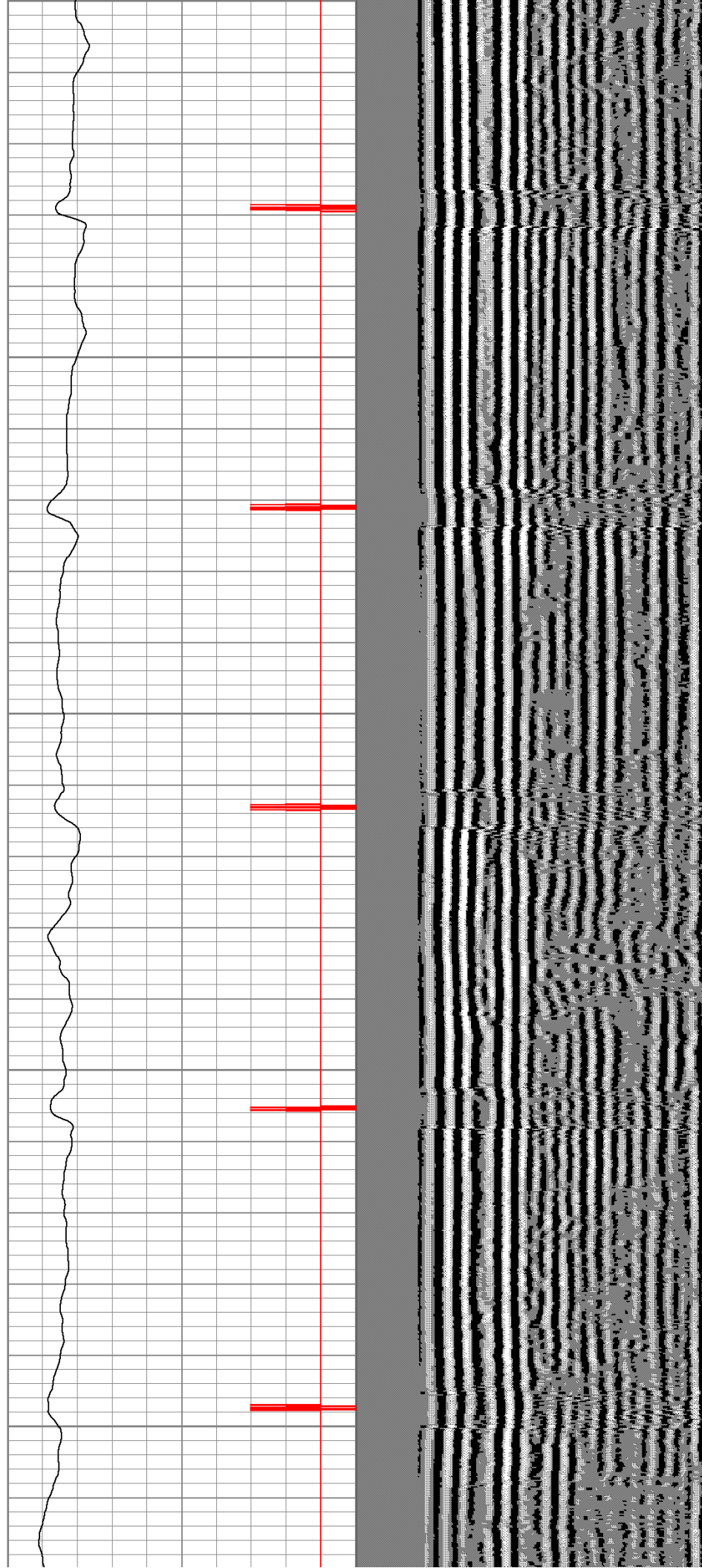
450

500

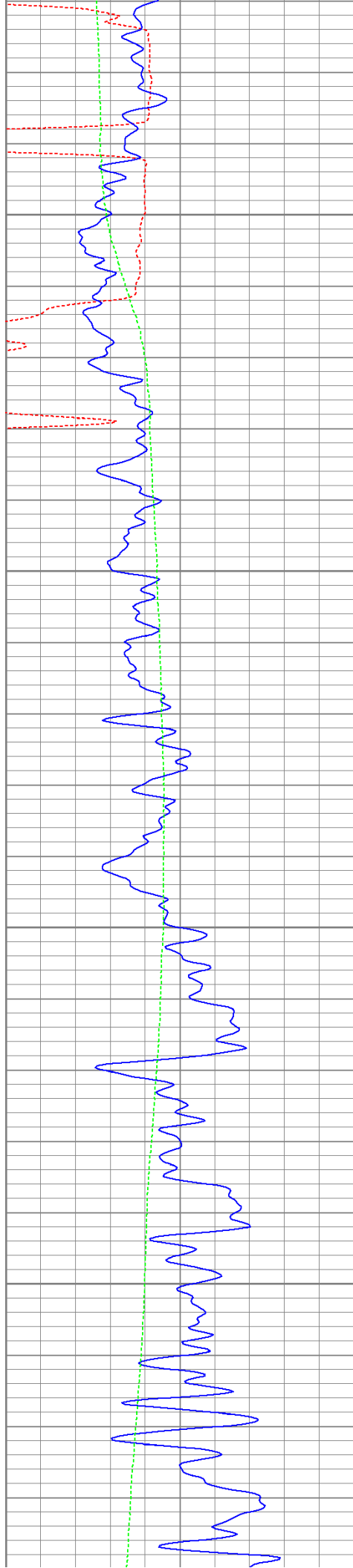
550

600

650





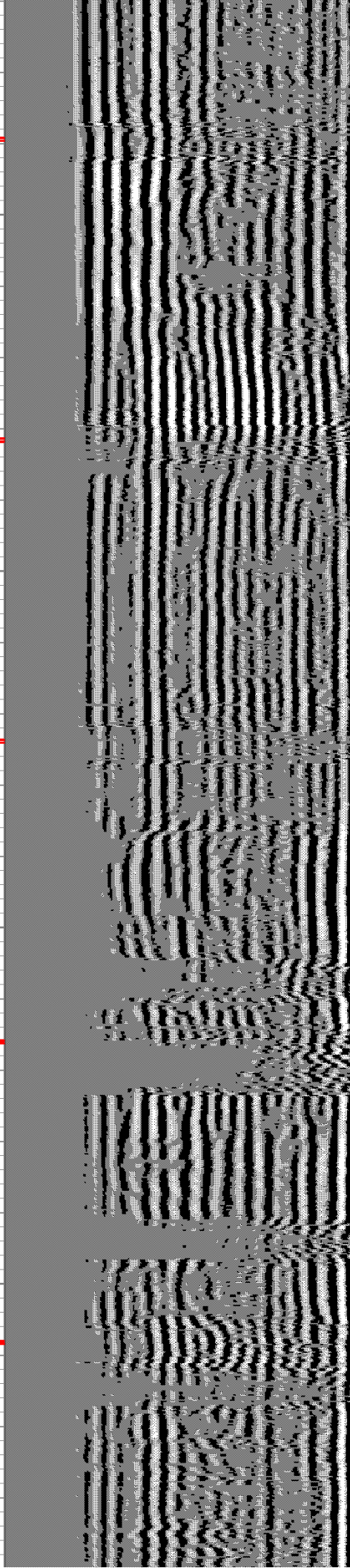
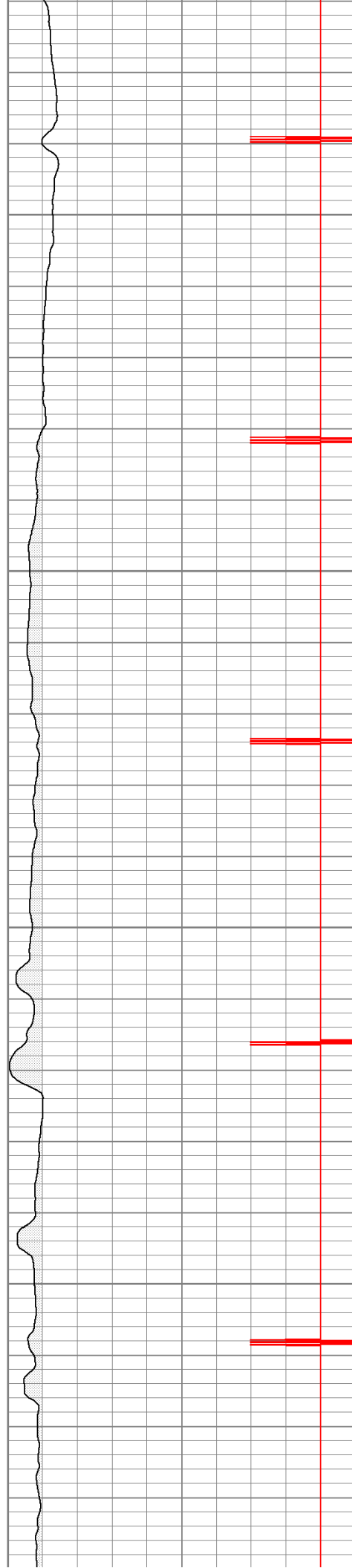


700

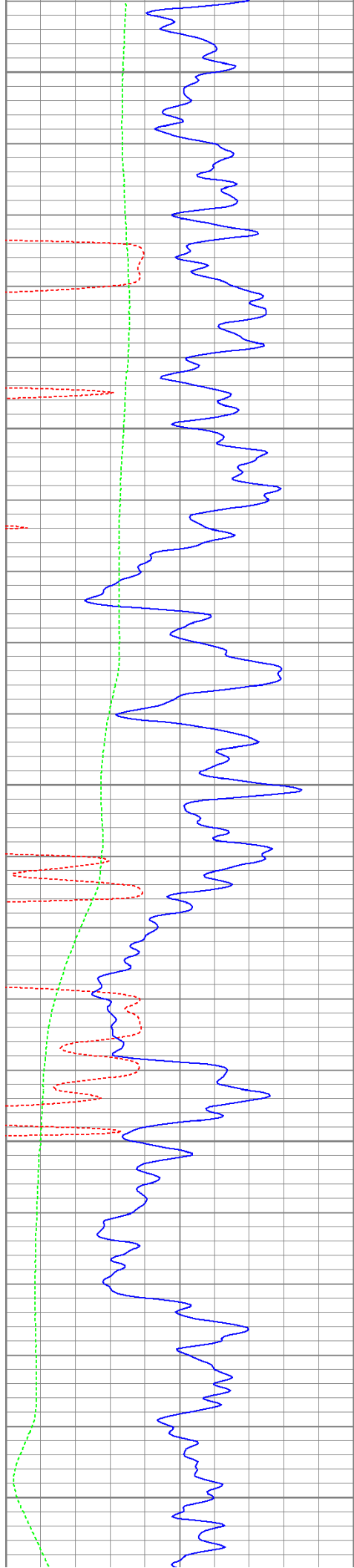
750

800

850







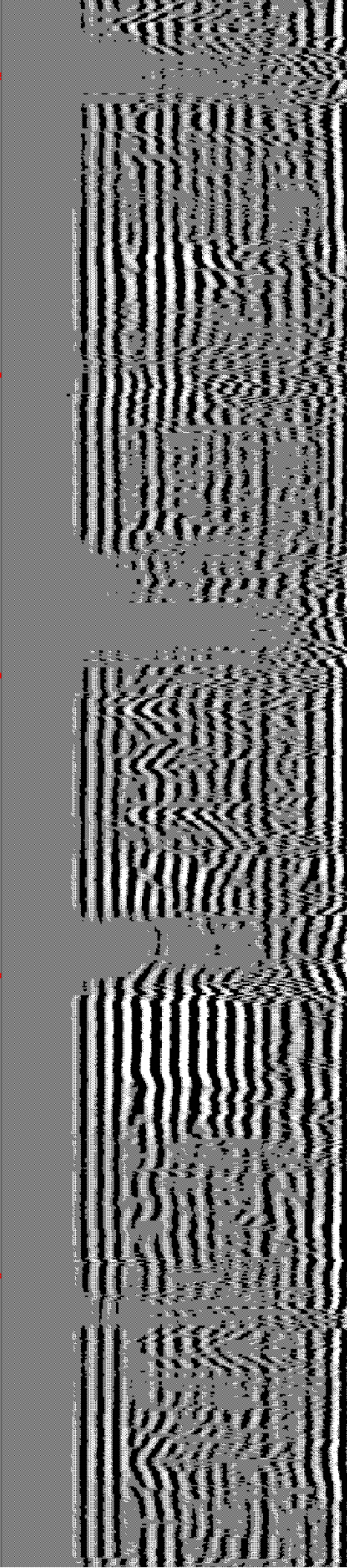
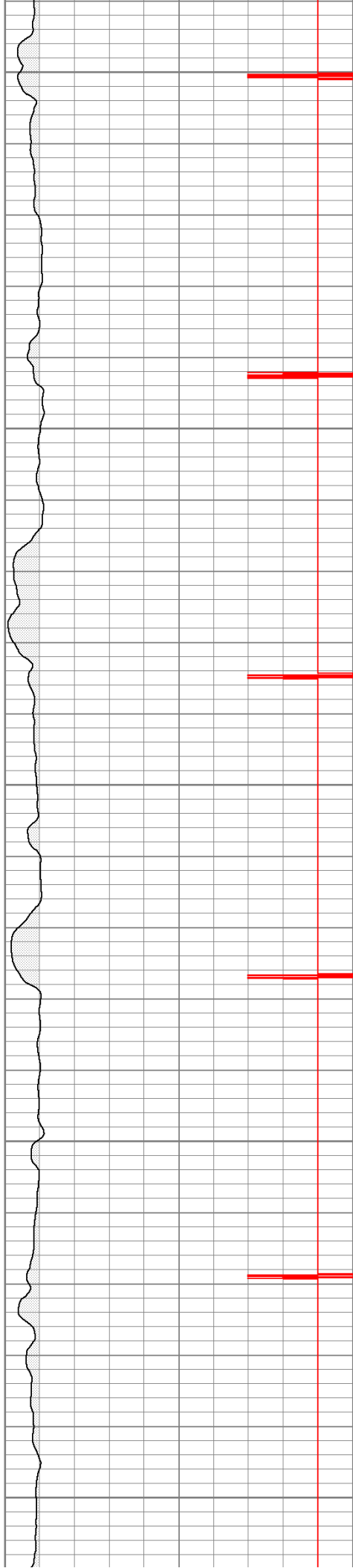
900

950

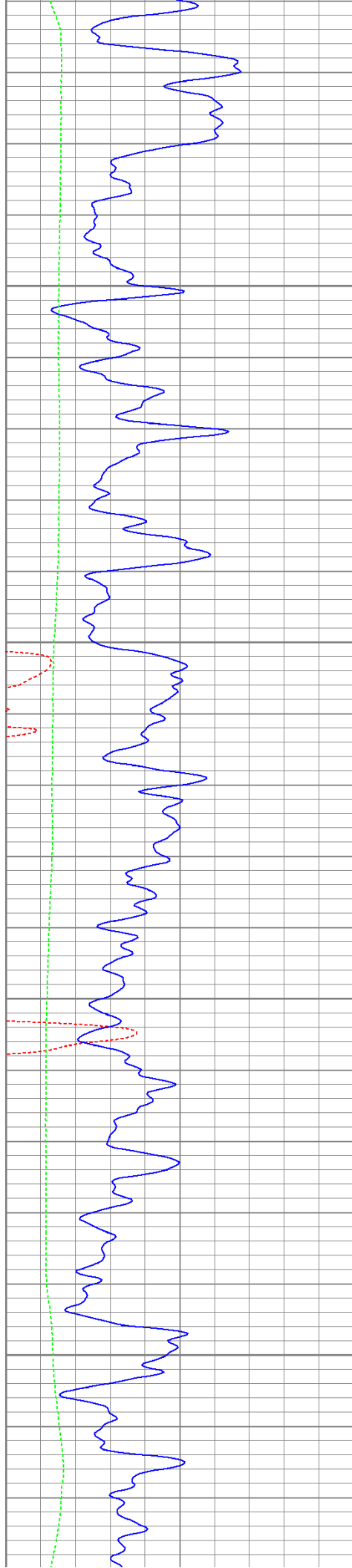
1000

1050

1100







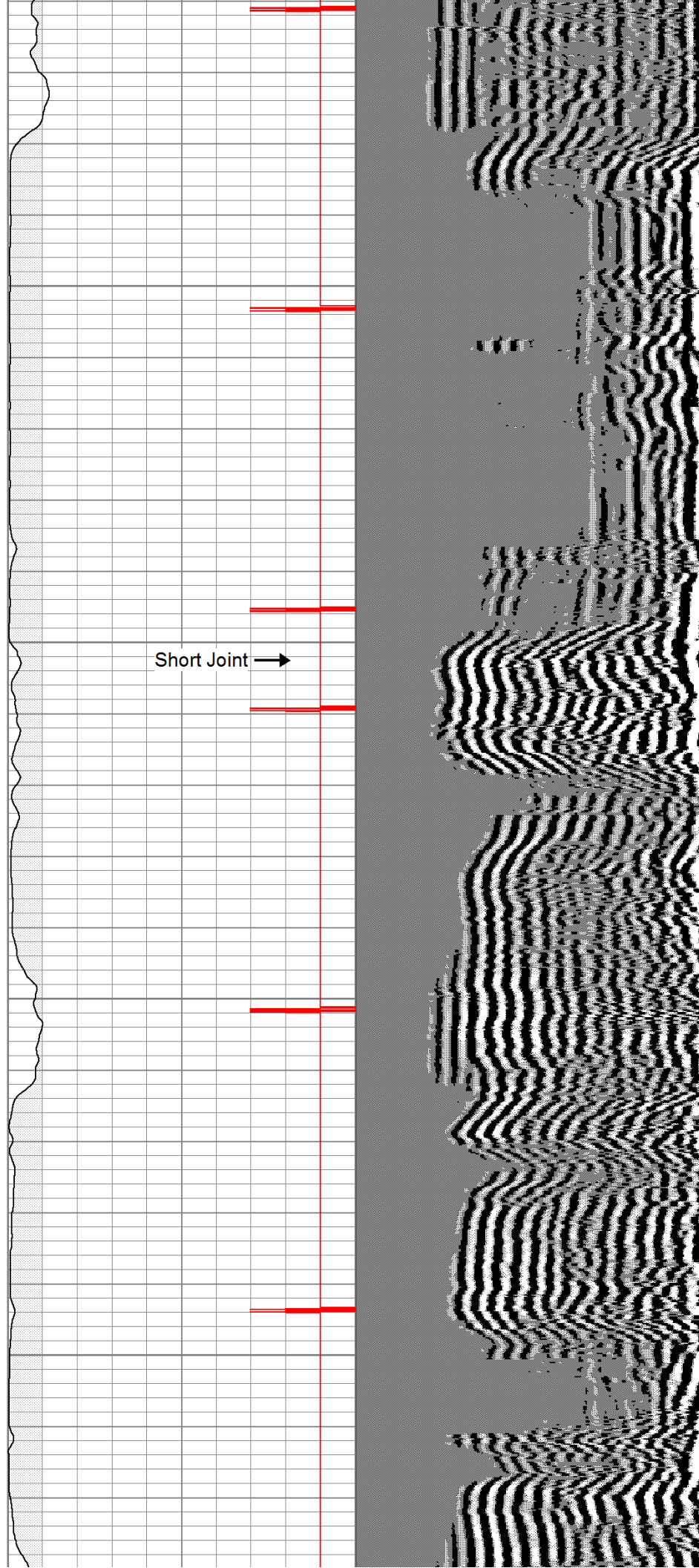
1150

1200

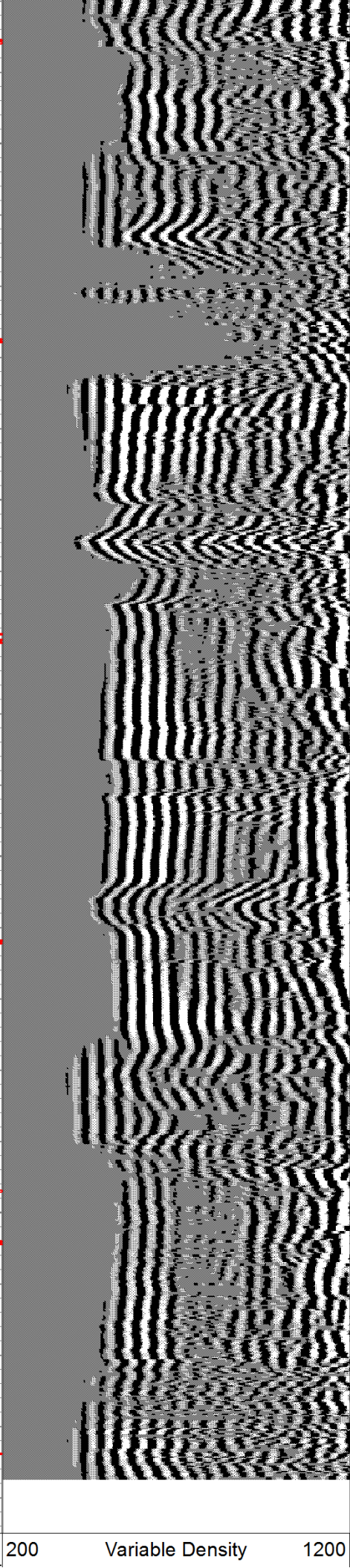
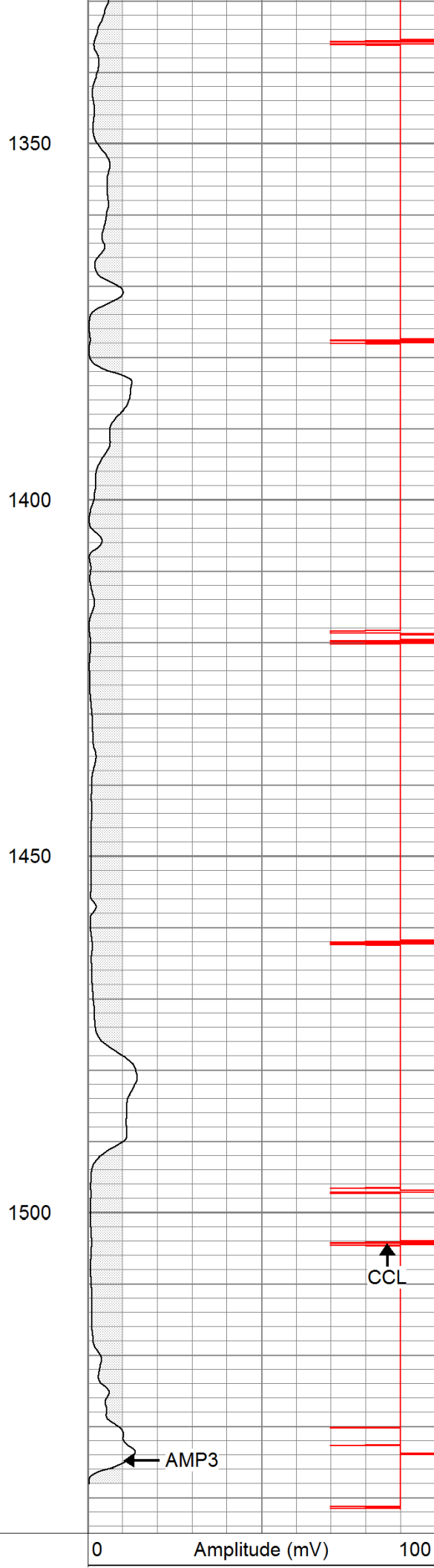
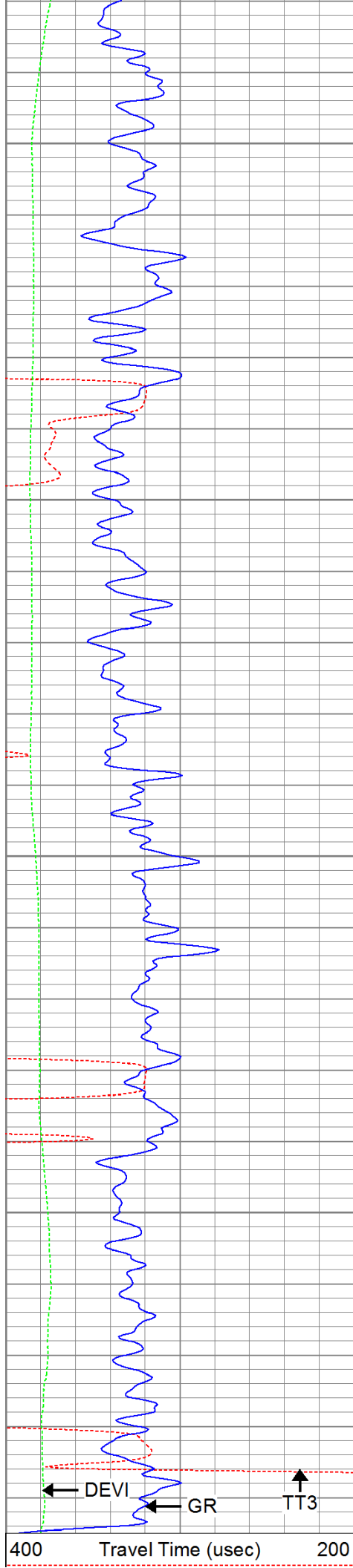
1250

1300

Short Joint →









0	GR (GAPI)	200
0	DEVI (°)	10

9	Collar Locator	-1
---	----------------	----

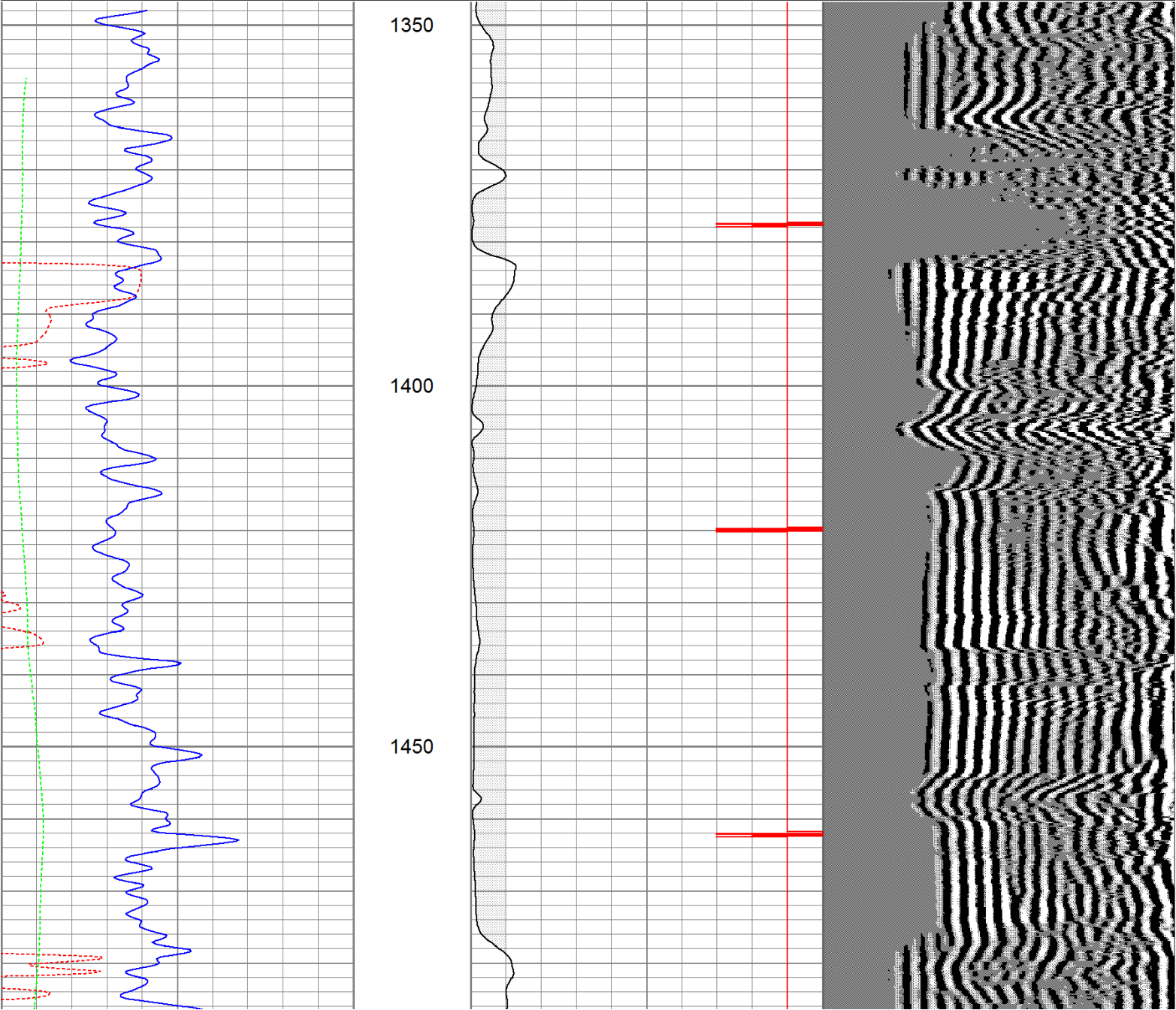


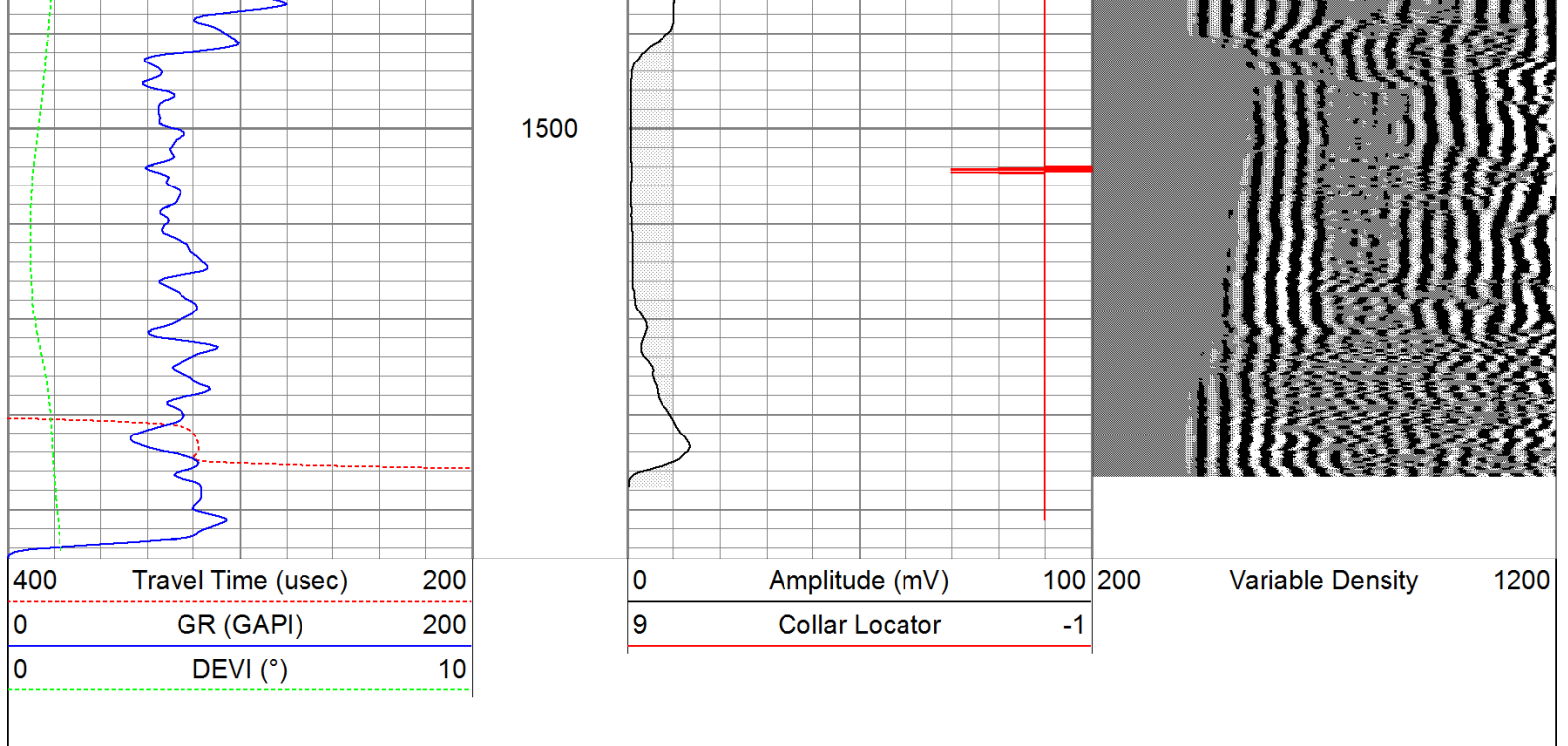
# Repeat Pass

Database File: turlington72211b.db  
 Dataset Pathname: pass1  
 Presentation Format: cbldig  
 Dataset Creation: Fri Jul 22 16:36:01 2011 by Log Open-Cased 110302  
 Charted by: Depth in Feet scaled 1:240

400	Travel Time (usec)	200
0	GR (GAPI)	200
0	DEVI (°)	10

0	Amplitude (mV)	100	200	Variable Density	1200
9	Collar Locator	-1			





Calibration Report					
Database File:	turlington72211b.db				
Dataset Pathname:	pass1				
Dataset Creation:	Fri Jul 22 16:36:01 2011 by Log Open-Cased 110302				
Gamma Ray Calibration Report					
Serial Number:	080616				
Tool Model:	275D_INC				
Performed:	Wed May 04 17:31:09 2011				
Calibrator Value:	200.0	GAPI			
Background Reading:	50.0	cps			
Calibrator Reading:	250.0	cps			
Sensitivity:	1.0000	GAPI/cps			
Inclinometer Calibration Report					
Performed:	Wed May 04 17:39:54 2011				
	Low Read.	High Read.	Low Ref.	High Ref.	
X Accelerometer	-3585.20	3595.40	-1.00	1.00	gee
Y Accelerometer	-3619.40	3520.00	-1.00	1.00	gee
Z Accelerometer					
Cement Bond Log Calibration Report					
Serial Number:	081024				
Tool Model:	PROBEDIGITALCBL				
Performed:	Tue Jul 19 09:25:23 2011				
Depth:	93.4615	ft			
Casing Diameter:	5.5	in			
	3' Spacing	5' Spacing			



Signal Zero:	0	0	mV
Calibrated Amplitude:	85	85	mV
Reading at Signal Zero:	-0.00874023	-0.0092041	V
Reading in Free Pipe:	1.72476	1.66304	V
Gain:	49.0339	50.83	
Offset:	0.428567	0.467844	

[illegible]