

Company		Pioneer Natural Resources	
Well		Turlington 22-28	
Field		Purgatoire River	
County		Las Animas	
State		Colorado	
Location:		APL #: 05 071 09820 00	
SEC 28 TWP 31S RGE 65W		CDNL	
Permanent Datum		Ground Level	
Log Measured From		Kelly Bushing 4' AGL	
Drilling Measured From		Kelly Bushing	
Elevation		7132'	
K.B. 7136'		D.F. -----	
G.L. 7132'			
Date	7-19-11		
Run Number	One		
Depth Driller	1585'		
Depth Logger	1582'		
Bottom Logged Interval	1580'		
Top Log Interval	Surface Casing		
Casing Driller	8 5/8" @ 770'		
Casing Logger	770'		
Bit Size	7 7/8"		
Type Fluid in Hole	Water		
Density / Viscosity	///		
pH / Fluid Loss	///		
Source of Sample	///		
Rm @ Meas. Temp	///		
Rmf @ Meas. Temp	///		
Rmc @ Meas. Temp	///		
Source of Rmf / Rmc	///		
Rm @ BHT	///		
Time Circulation Stopped	2:30 A.M.		
Time Logger on Bottom	5:30 A.M.		
Maximum Recorded Temperature	90 DEG F		
Equipment Number	T590		
Location	Trinidad		
Recorded By	C. Sisneros		
Witnessed By	Mr. Derrick Berry		

<<< Fold Here >>>

All interpretations are opinions based on inferences from electrical or other measurements and we cannot and do not guarantee the accuracy or correctness of any interpretation, and we shall not, except in the case of gross or willful negligence on our part, be liable or responsible for any loss, costs, damages, or expenses incurred or sustained by anyone resulting from any interpretation made by any of our officers, agents or employees. These interpretations are also subject to our general terms and conditions set out in our current Price Schedule.

## Comments

Directions:  
Ludlow to four corners, go left, fourth left, go thru gate, stay straight,  
go thru second gate, 2nd left to location.

Database File: turlington.db  
Dataset Pathname: pass2.1  
Presentation Format: iel  
Dataset Creation: Tue Jul 19 06:07:13 2011 by Calc Open-Cased 110302  
Charted by: Depth in Feet scaled 1:240

0	GR (GAPI)	200
-200	SP (mV)	0

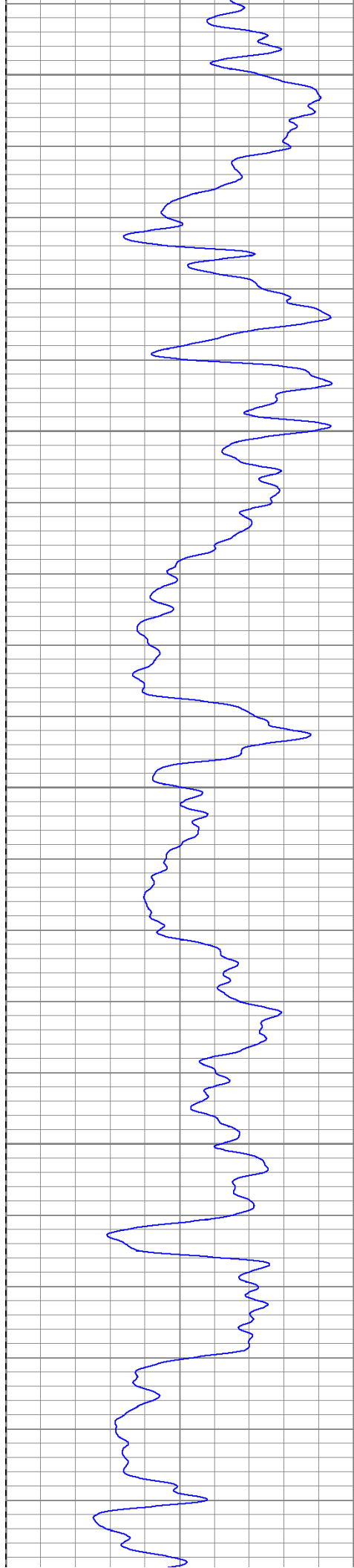
0.2	DIR (Ohm-m)	2000
0.2	SN (Ohm-m)	2000

Surface Casing

800

850

900



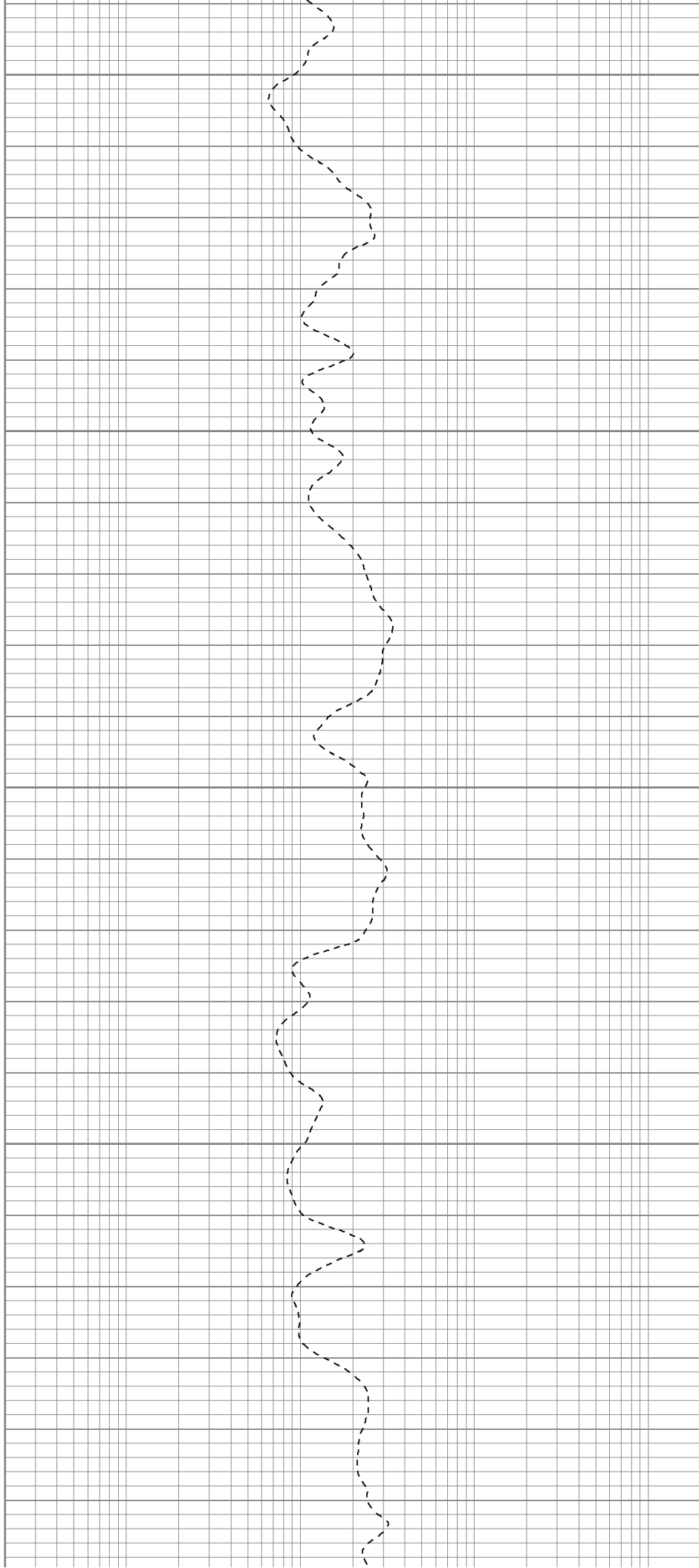
950

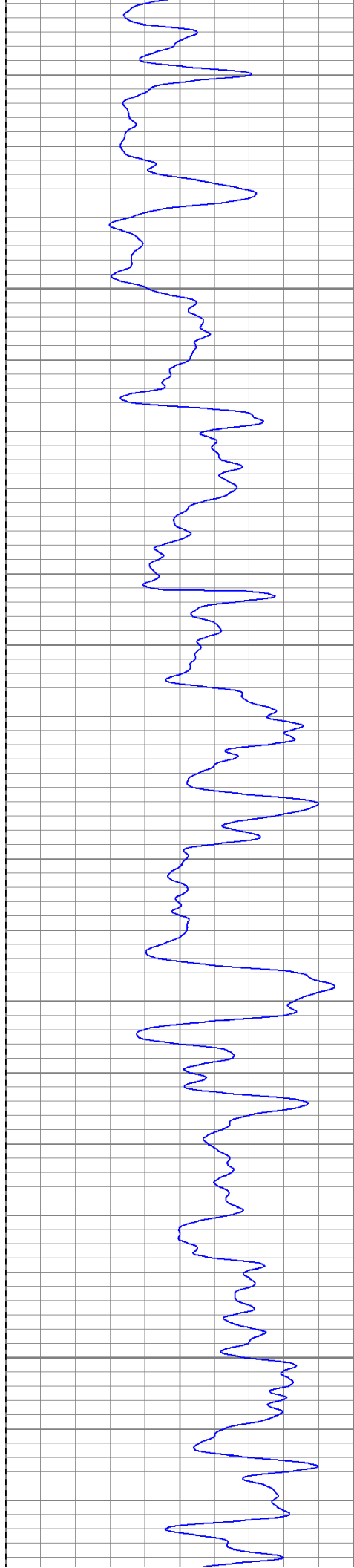
1000

1050

1100

1150



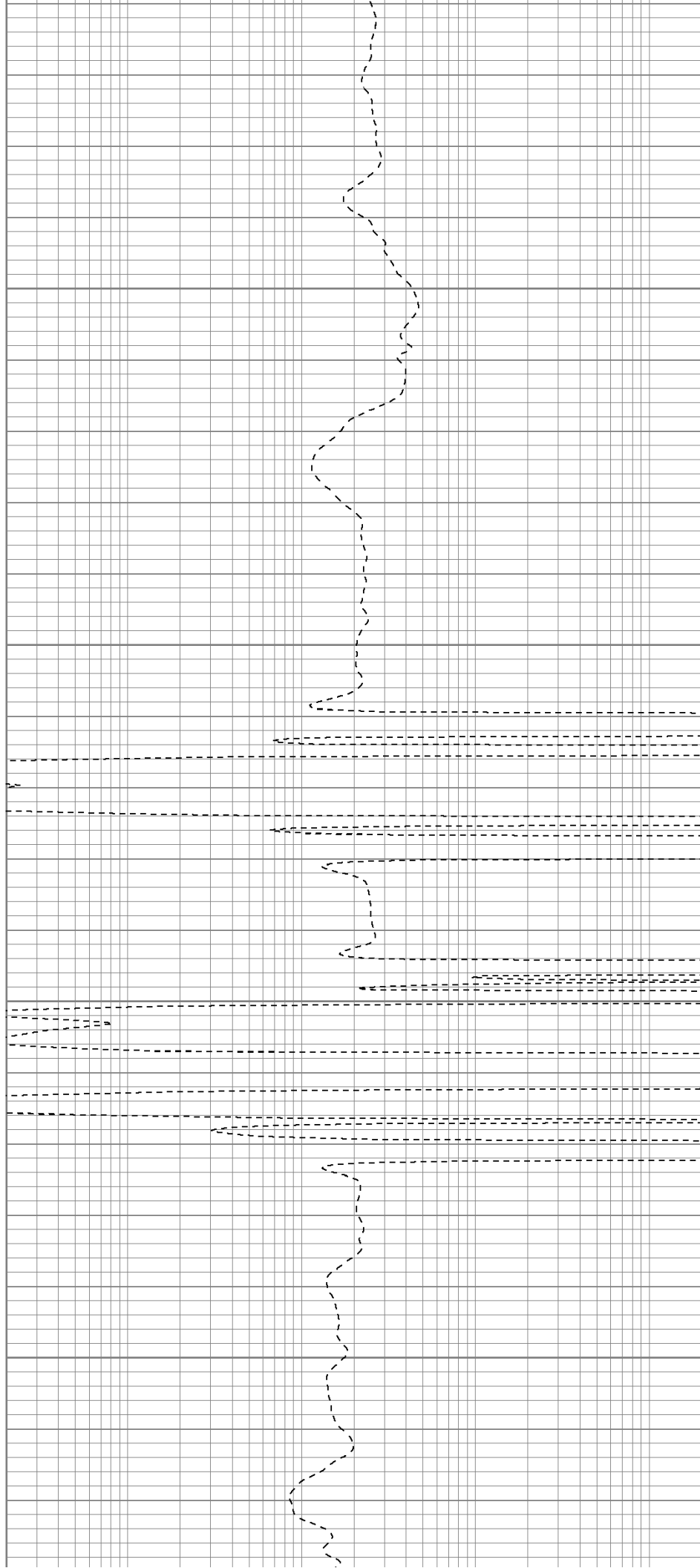


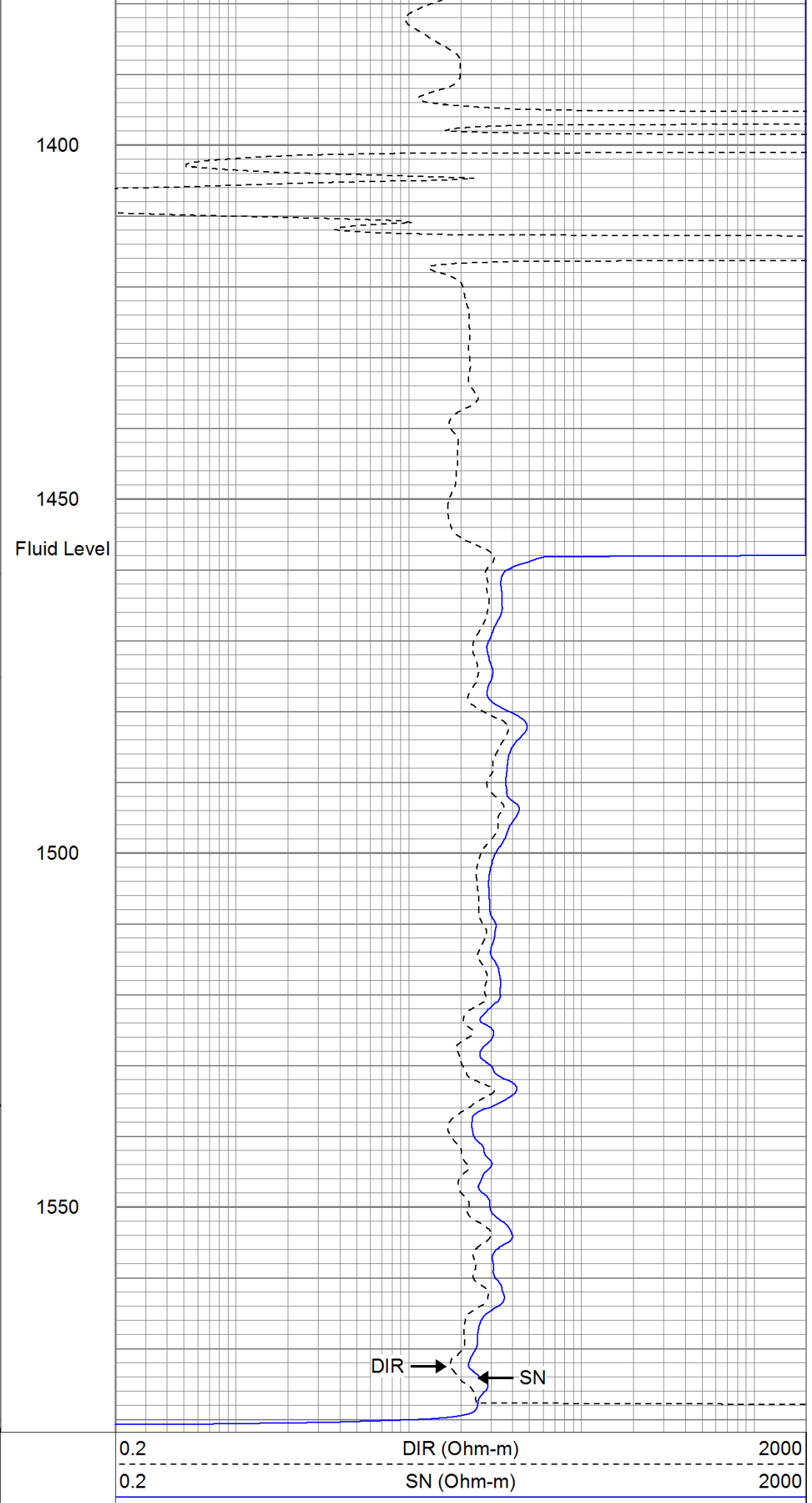
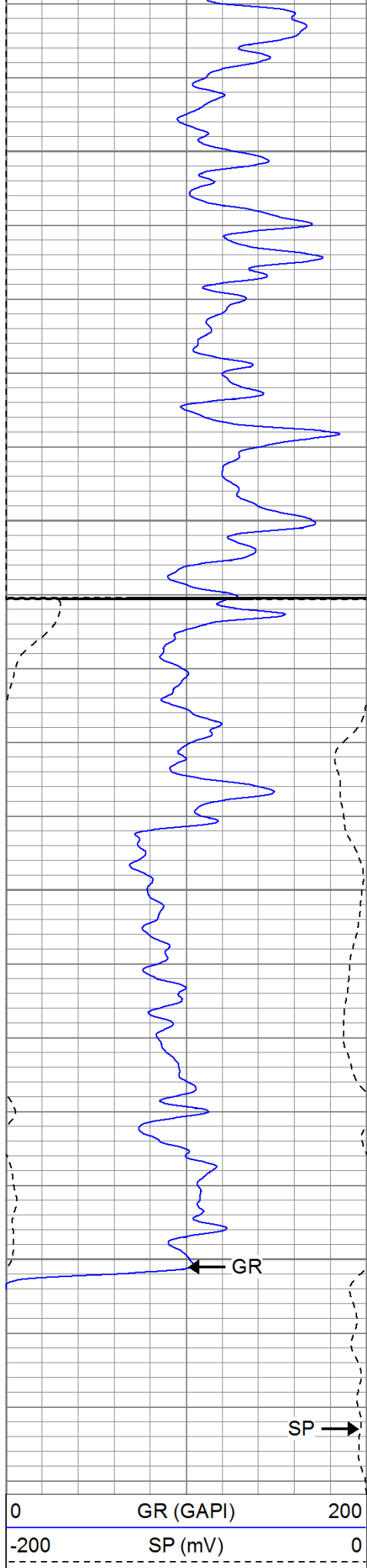
1200

1250

1300

1350



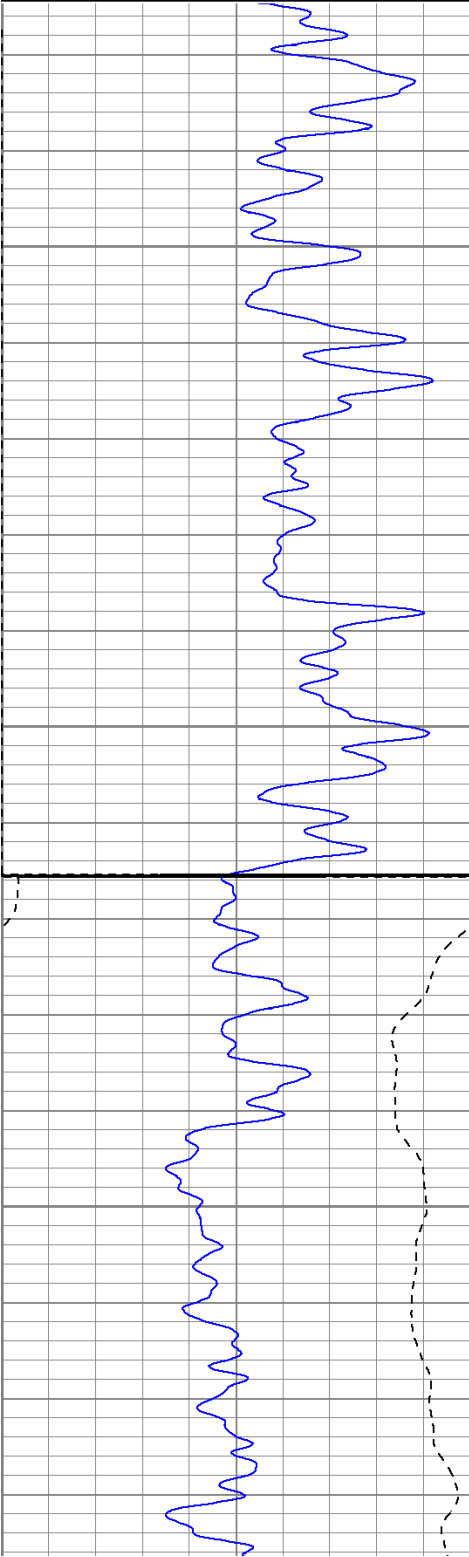


# Repeat Pass

Database File: turlington.db  
Dataset Pathname: pass1.1  
Presentation Format: iel  
Dataset Creation: Tue Jul 19 06:04:18 2011 by Calc Open-Cased 110302  
Charted by: Depth in Feet scaled 1:240

0	GR (GAPI)	200
-200	SP (mV)	0

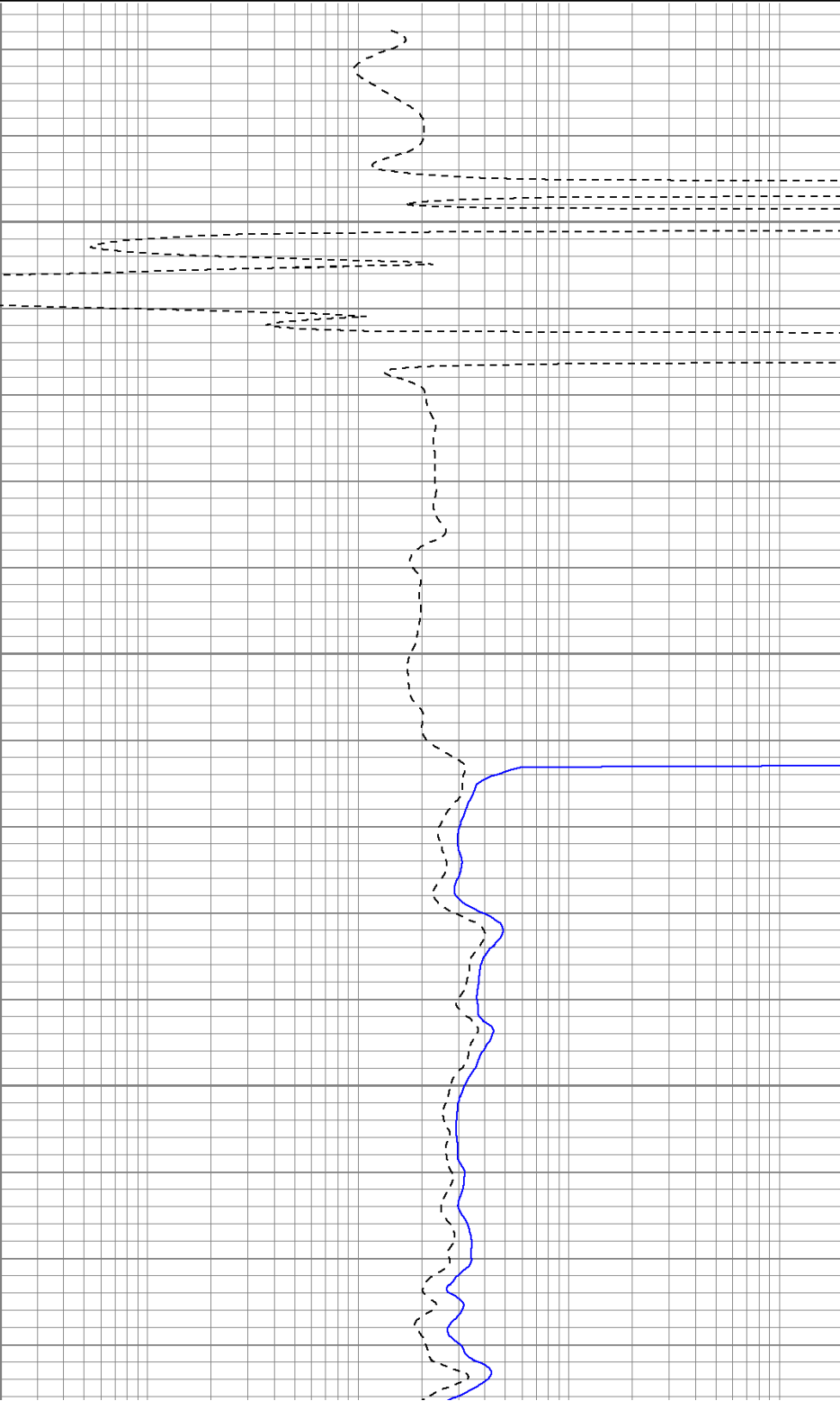
0.2	DIR (Ohm-m)	2000
0.2	SN (Ohm-m)	2000

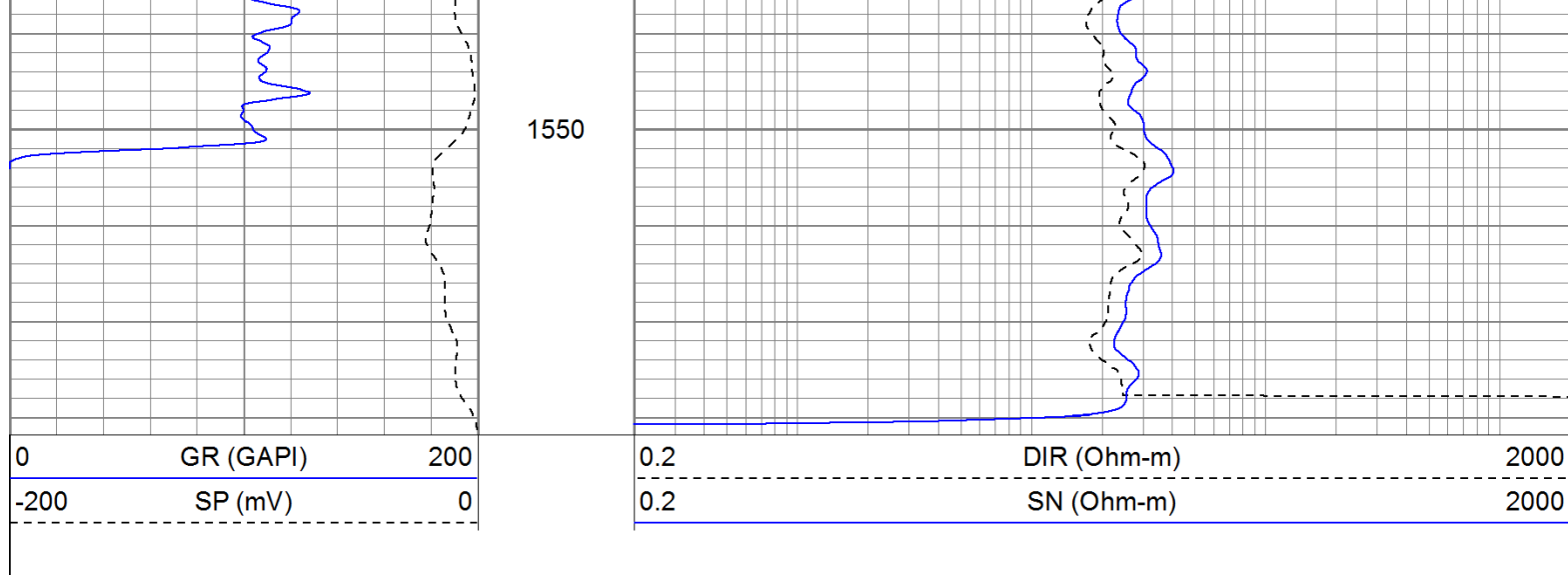


1400

1450

1500





### Calibration Report

Database File: turlington.db  
 Dataset Pathname: pass1  
 Dataset Creation: Tue Jul 19 05:26:19 2011 by Log Open-Cased 110302

### Induction Tool Calibration Report

Serial Number: 903  
 Tool Model: Probe  
 Downhole Cal Performed: Sat Jun 18 15:02:12 2011  
 Surface Cal Performed: Sat Jun 18 17:40:00 2011  
 After Survey Verification Performed:

Surface Calibration:	Air	Loop	
Conductivity Reference:	0.000	500.000	mmho
Conductivity Reading:	-0.045	0.642	V
Internal Reference:	Zero	Cal	
Conductivity Reference:	0.000	500.000	mmho
Conductivity Reading:	0.006	0.641	V

Downhole Calibration:	Internal Zero	Internal Cal	
Conductivity Reference:	-0.702	499.904	mmho
Conductivity Reading:	-0.082	503.319	V
Short Normal Reference:	0.000	20.000	Ohm-m
Short Normal Reading:	0.006	0.233	V

Results:	Gain	Offset
Loop Conductivity:	728.211	32.770
Downhole Correction:	0.994	-0.621
Short Normal Resistivity:	88.245	-2.000

After Survey Verification	Internal Zero	Internal Cal	
Conductivity Reading:	0.000	0.000	V
Conductivity Result:	0.000	0.000	mmho
Short Normal Reading:	0.000	0.000	V
Short Normal Result:	0.000	0.000	Ohm-m

### Compensated Density Calibration Report

Serial-Model: 901-2.75POH  
 Source / Verifier: /  
 Master Calibration Performed: Wed Jun 08 09:11:26 2011  
 Before Survey Verification Performed:  
 After Survey Verification Performed:


### Master Calibration

Density

Far Detector

Near Detector

Magnesium	1.710	g/cc	1001.79	578.48	cps
Aluminum	2.590	g/cc	180.36	300.39	cps
Spine Angle = 69.08			Density/Spine Ratio = 0.479		
	Size		Reading		
Small Ring	8.05	in	2.50	V	
Large Ring	16.00	in	4.57	V	
Before Survey Verification					
	Target		Measured		
		g/cc			g/cc
		g/cc			g/cc
		g/cc			g/cc
After Survey Verification					
	Target		Measured		
		g/cc			g/cc
		g/cc			g/cc
		g/cc			g/cc
Neutron Calibration Report					
Serial Number:	803				
Tool Model:	2.75POH				
Performed:	Wed Jun 08 13:12:55 2011				
Calibrator Value:	1		NAPI		
Calibrator Reading:	1		cps		
Sensitivity:	1		NAPI/cps		
Gamma Ray Calibration Report					
Serial Number:	804				
Tool Model:	2.75POH				
Performed:	Tue Jun 14 18:09:29 2011				
Calibrator Value:	1.0		GAPI		
Background Reading:	0.0		cps		
Calibrator Reading:	1.0		cps		
Sensitivity:	0.6500		GAPI/cps		

Sensor	Offset (ft)	Schematic	Description	Len (ft)	OD (in)	Wt (lb)
GR	29.58		None	0.75	1.50	5.00
			GR-2.75POH (804) Probe 2.75" Probe Open Hole Gamma Ray	3.73	2.75	43.00
NEU	24.04		NEU-2.75POH (803) Probe Epithermal	4.75	2.75	58.00
			CDL-2.75POH (901)	8.43	2.75	106.00



LSD	16.21		31.11	305.00	2.75	93.00
DCAL	15.94					
SSD	15.69					
DIC	6.24					
SP	2.25					
SN	1.71					
Dataset:		turlington.db: field/well/run1/pass1				
Total Length:		31.11 ft				
Total Weight:		305.00 lb				
O.D.		2.75 in				