

Company		Pioneer Natural Resources	
Well		Icehouse 23-34	
Field		Purgatoire River	
County		Las Animas	
State		Colorado	
Location:		API #: 05 071 09822 00 2217' FSL & 1500' FWL SEC 34 TWP 31S RGE 66W Permanent Datum Ground Level Elevation 7168' Log Measured From Kelly Bushing 9' AGL Drilling Measured From Kelly Bushing Other Services CDNL Elevation K.B. 7177' D.F. ----- G.L. 7168'	
Date	7-16-11		
Run Number	One		
Depth Driller	2070'		
Depth Logger	2068'		
Bottom Logged Interval	2066'		
Top Log Interval	Surface Casing		
Casing Driller	8 5/8" @ 756'		
Casing Logger	755'		
Bit Size	7 7/8"		
Type Fluid in Hole	Water		
Density / Viscosity	///		
pH / Fluid Loss	///		
Source of Sample	///		
Rm @ Meas. Temp	///		
Rmf @ Meas. Temp	///		
Rmc @ Meas. Temp	///		
Source of Rmf / Rmc	///		
Rm @ BHT	///		
Time Circulation Stopped	7:00 P.M.		
Time Logger on Bottom	12:45 A.M.		
Maximum Recorded Temperature	98 DEG F		
Equipment Number	T590		
Location	Trinidad		
Recorded By	C. Sisneros		
Witnessed By	Mr. Derrick Berry		

<<< Fold Here >>>

All interpretations are opinions based on inferences from electrical or other measurements and we cannot and do not guarantee the accuracy or correctness of any interpretation, and we shall not, except in the case of gross or willful negligence on our part, be liable or responsible for any loss, costs, damages, or expenses incurred or sustained by anyone resulting from any interpretation made by any of our officers, agents or employees. These interpretations are also subject to our general terms and conditions set out in our current Price Schedule.

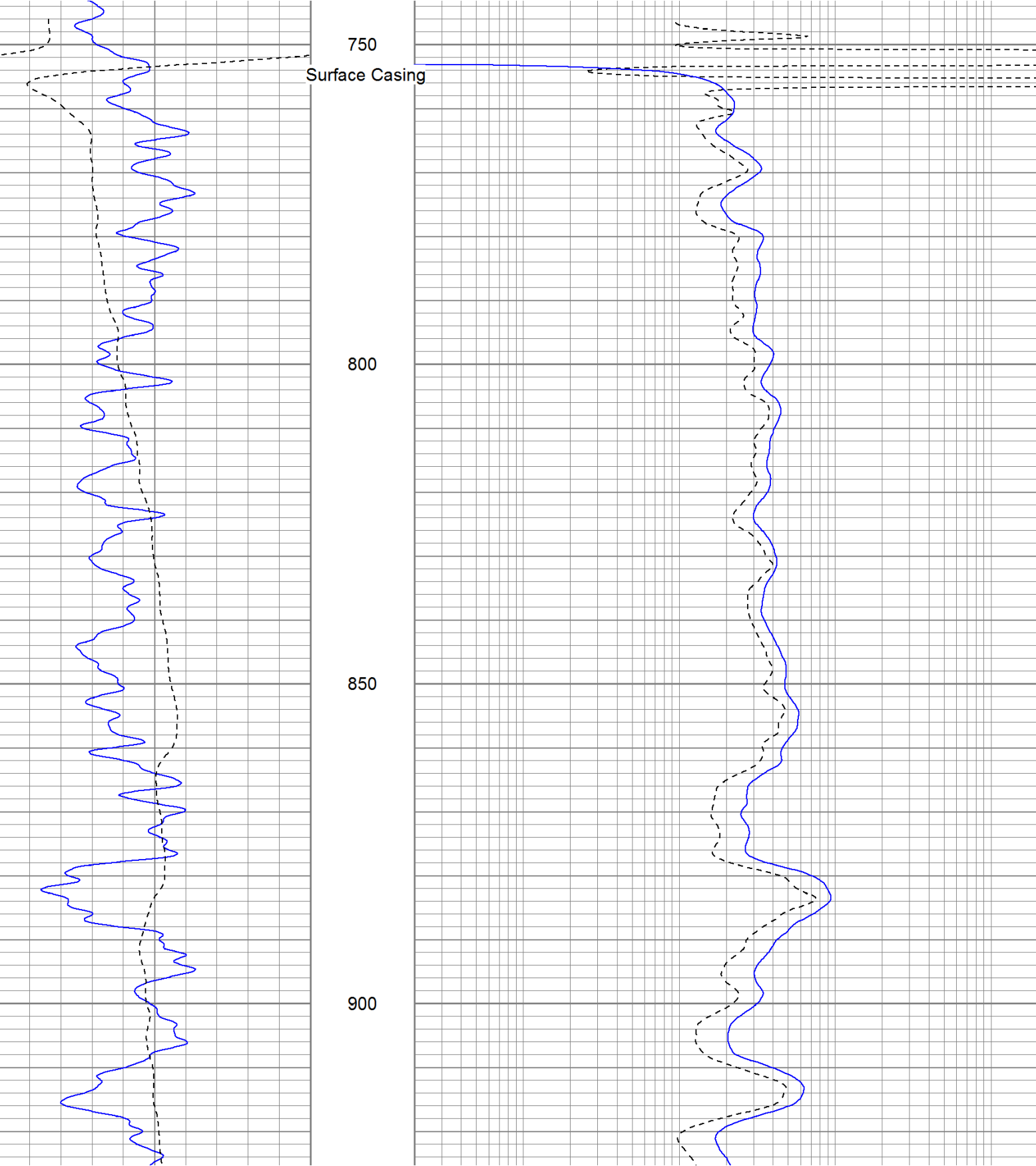
## Comments

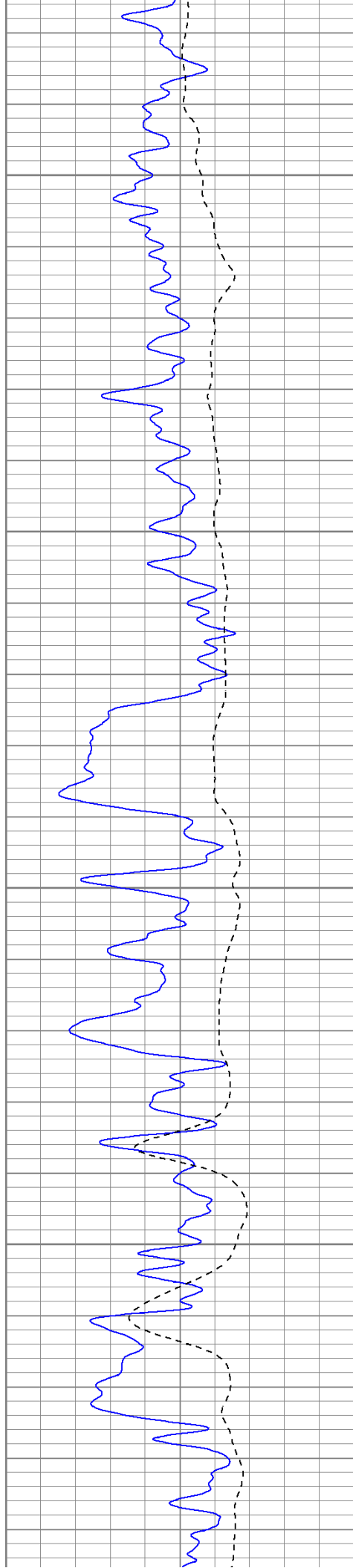
Directions:  
Gulnare to Gravel Pit, at Y go left, drive thru Rampart location, follow main rd, drive thru Lifeboat location, dead end on location.

Database File: icehouse.db  
Dataset Pathname: pass2.1  
Presentation Format: iel  
Dataset Creation: Sat Jul 16 01:46:56 2011 by Calc Open-Cased 110302  
Charted by: Depth in Feet scaled 1:240

0	GR (GAPI)	200
-200	SP (mV)	0

0.2	DIR (Ohm-m)	2000
0.2	SN (Ohm-m)	2000



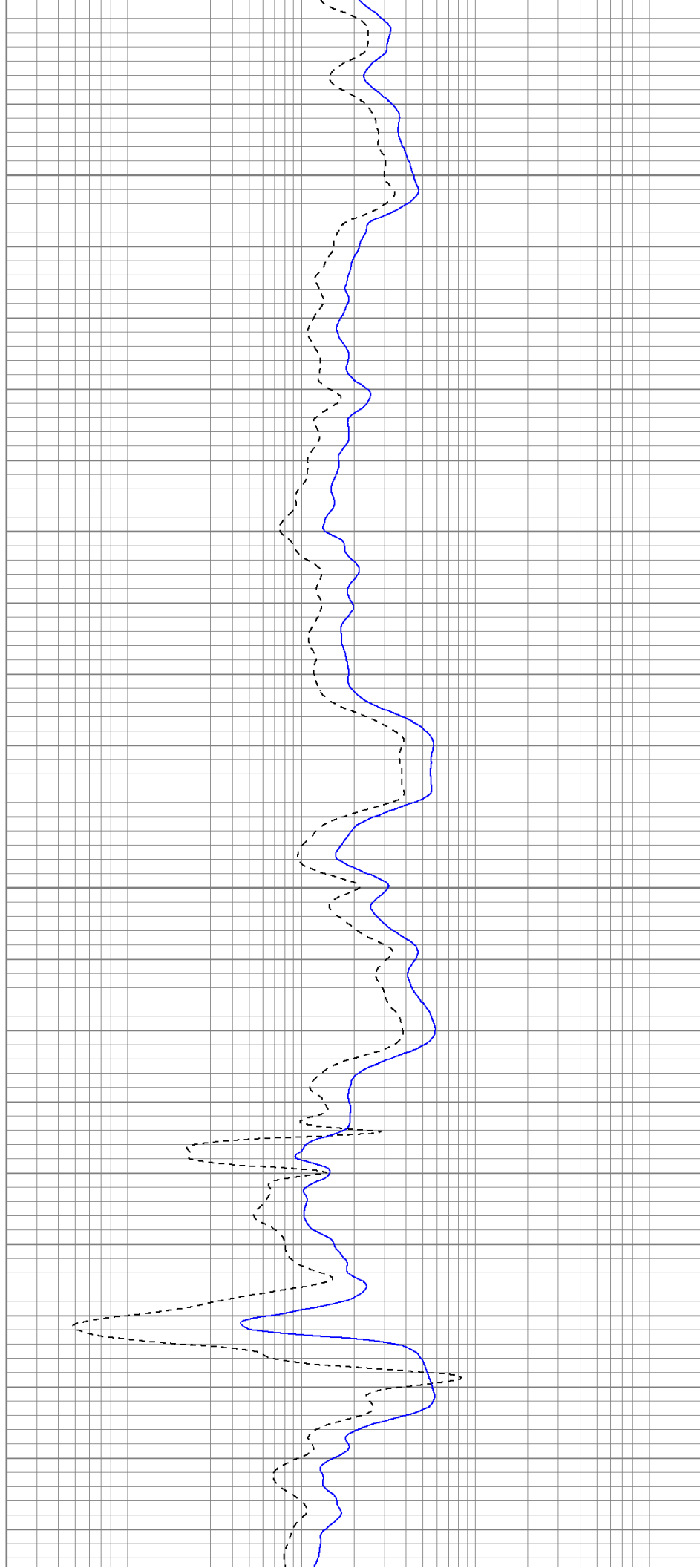


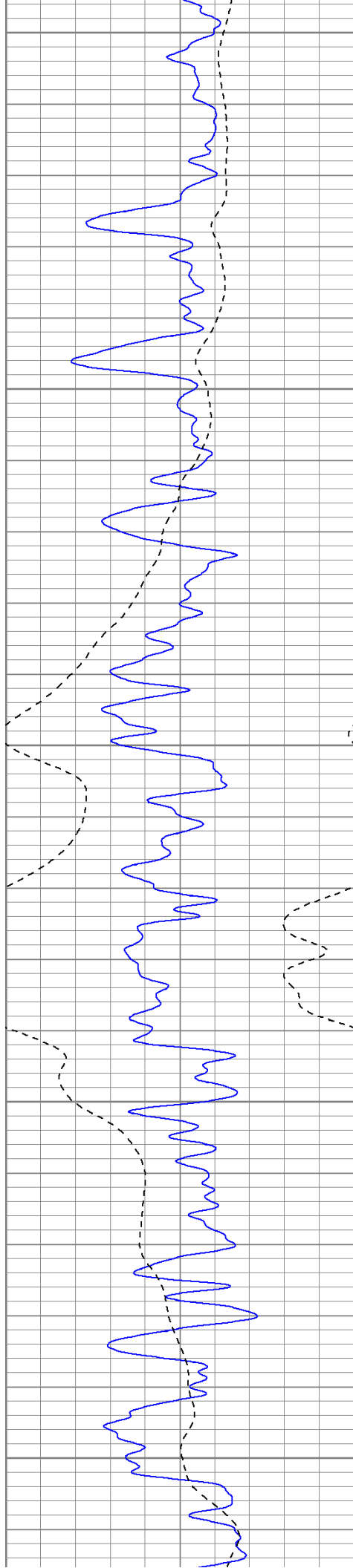
950

1000

1050

1100





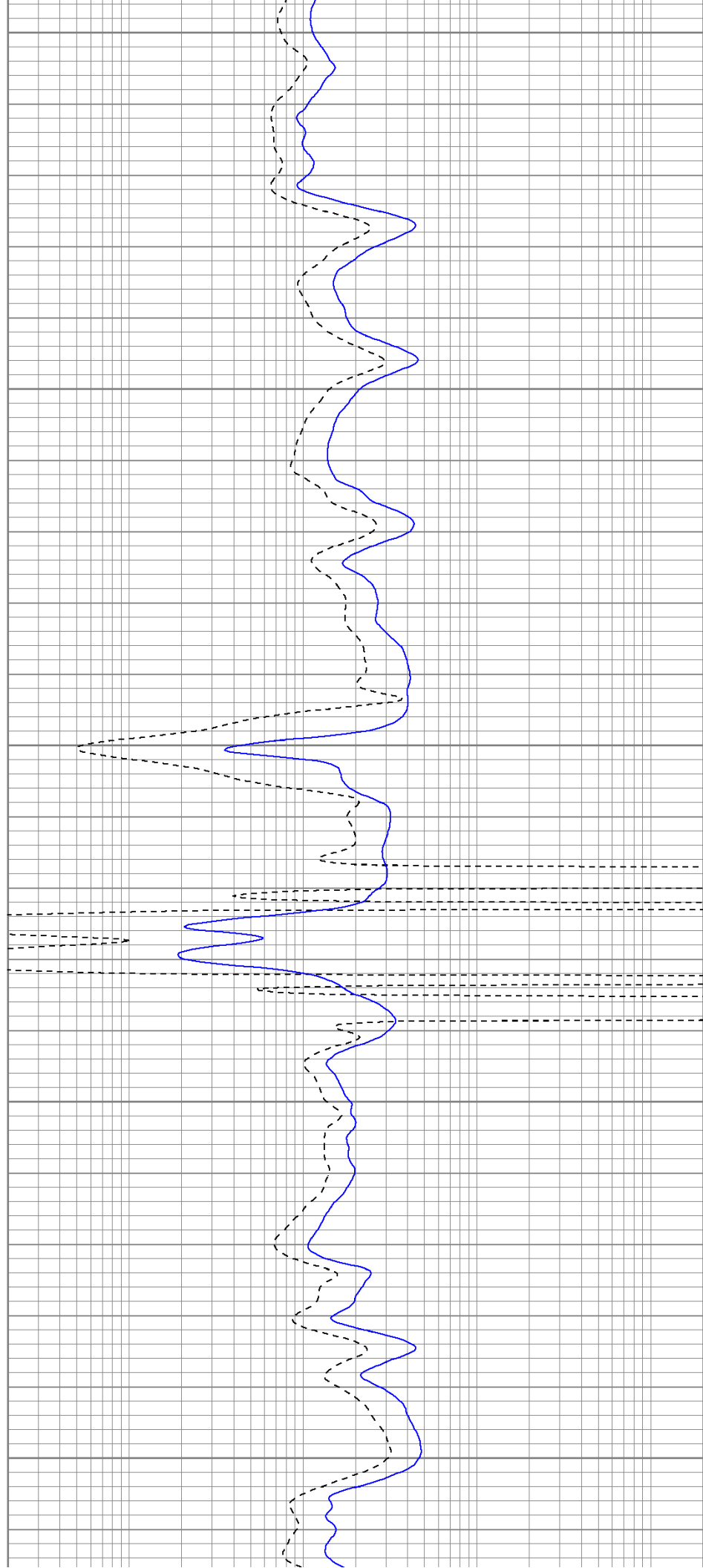
1150

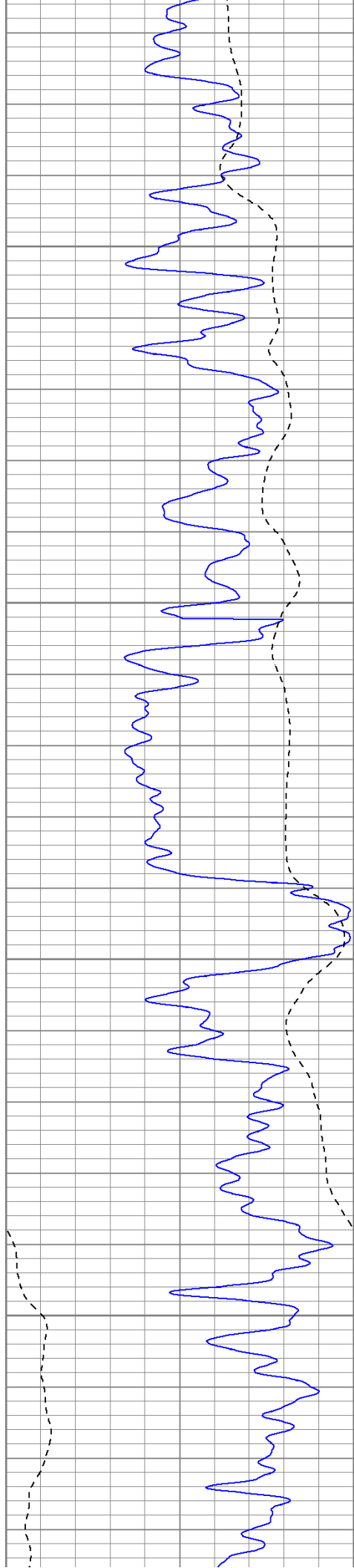
1200

1250

1300

1350



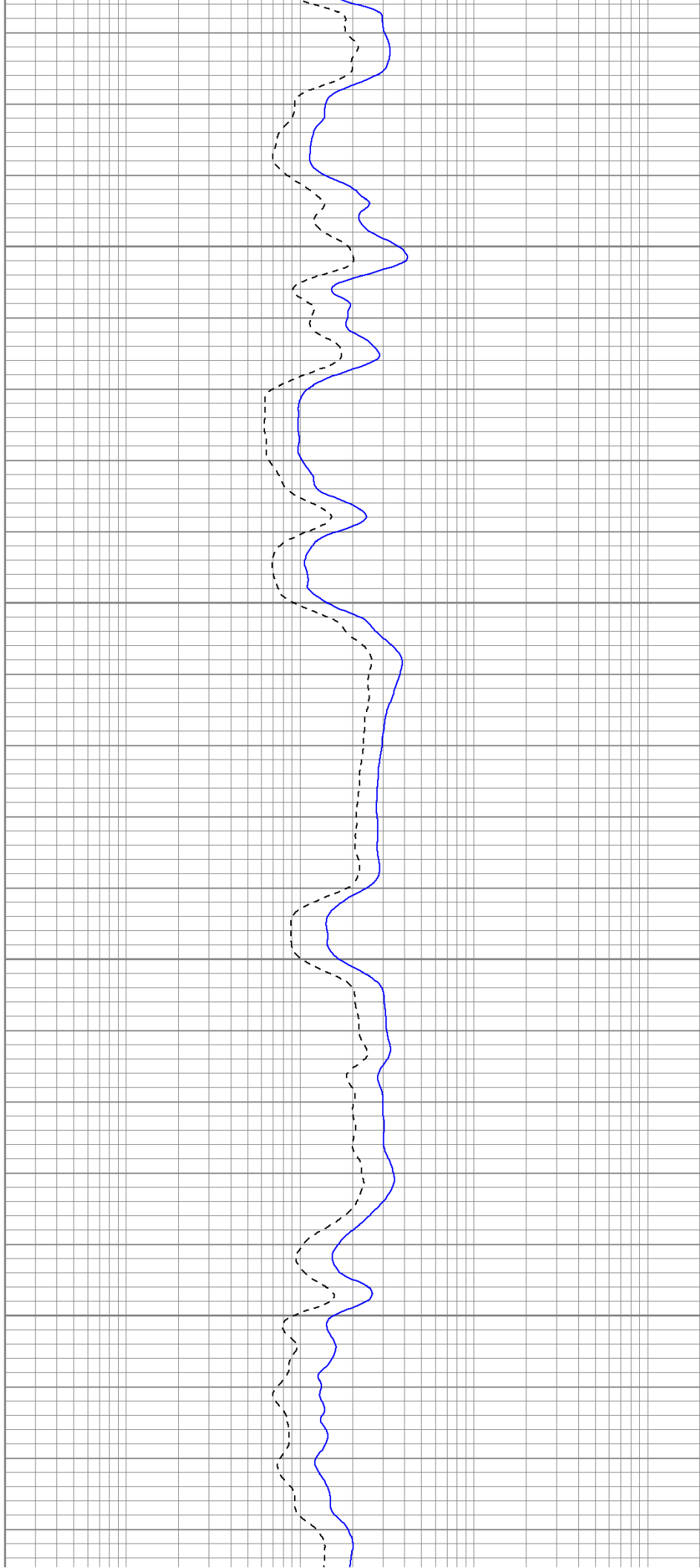


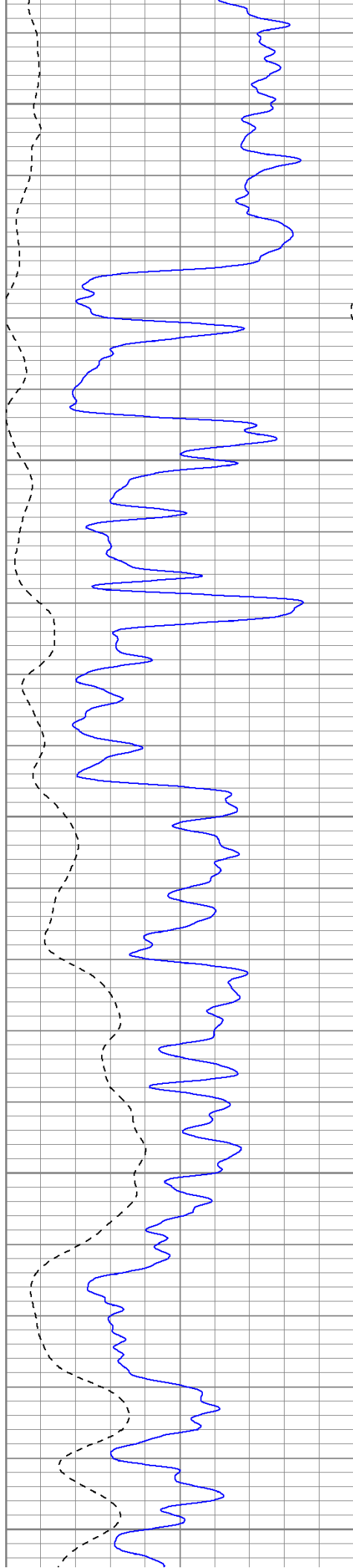
1400

1450

1500

1550





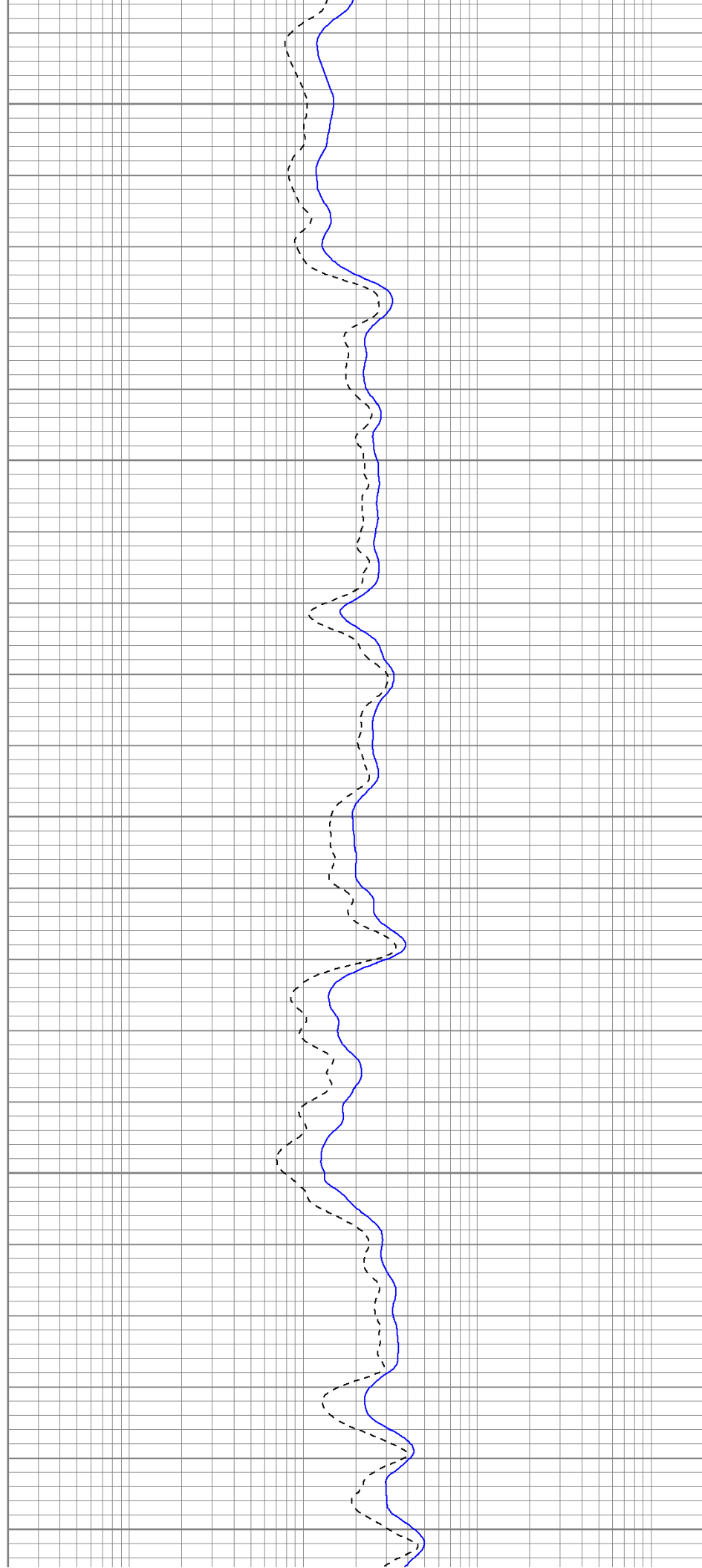
1600

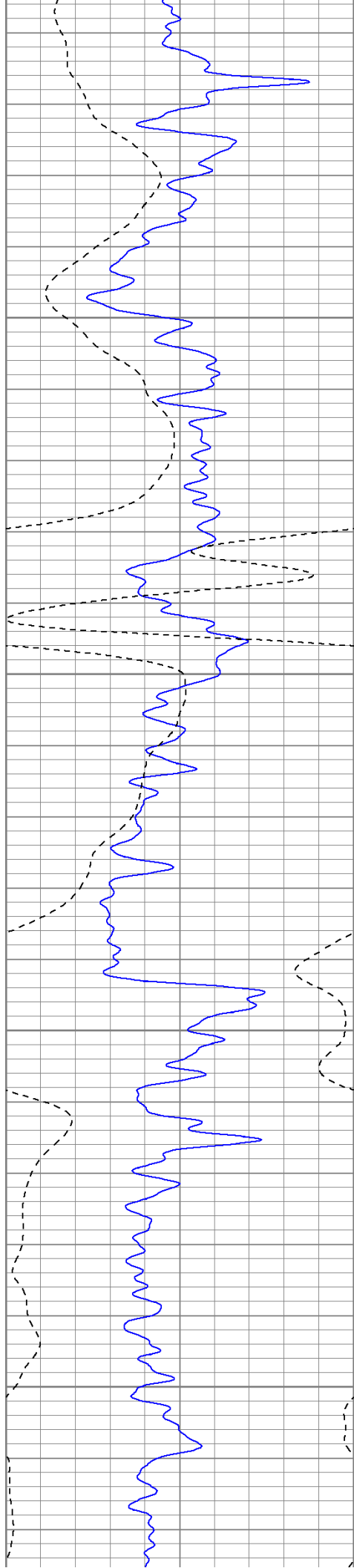
1650

1700

1750

1800



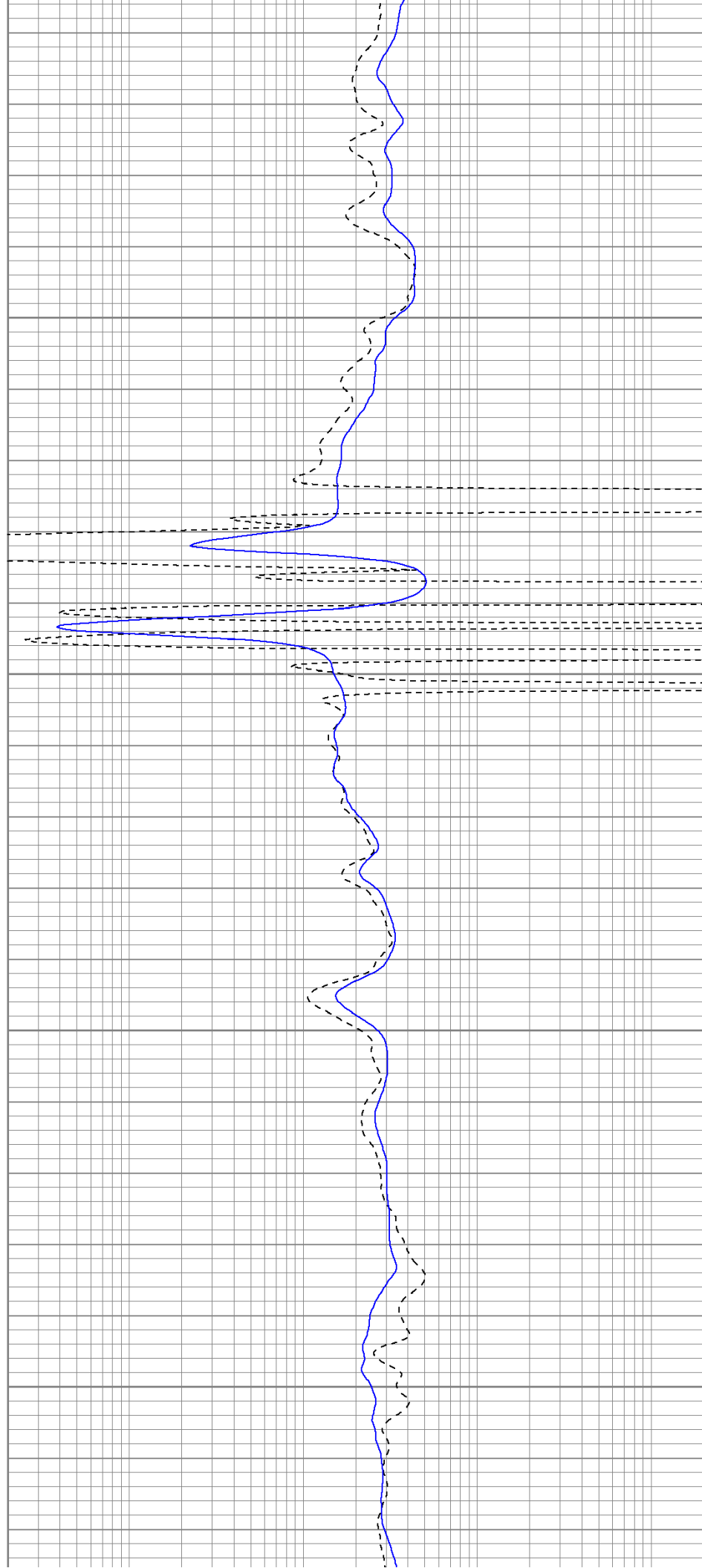


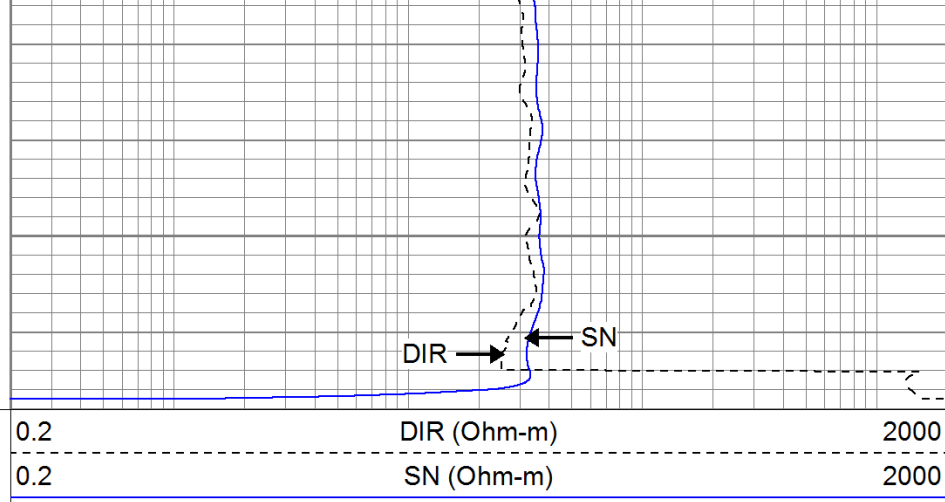
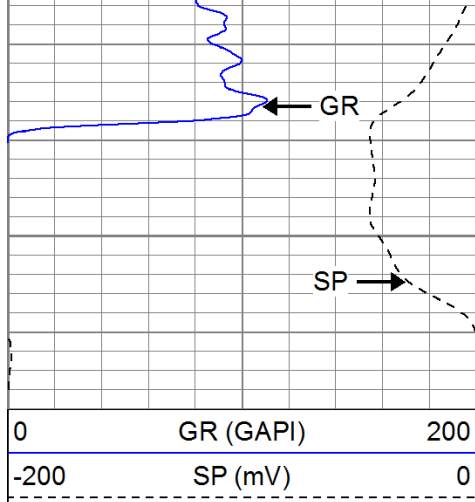
1850

1900

1950

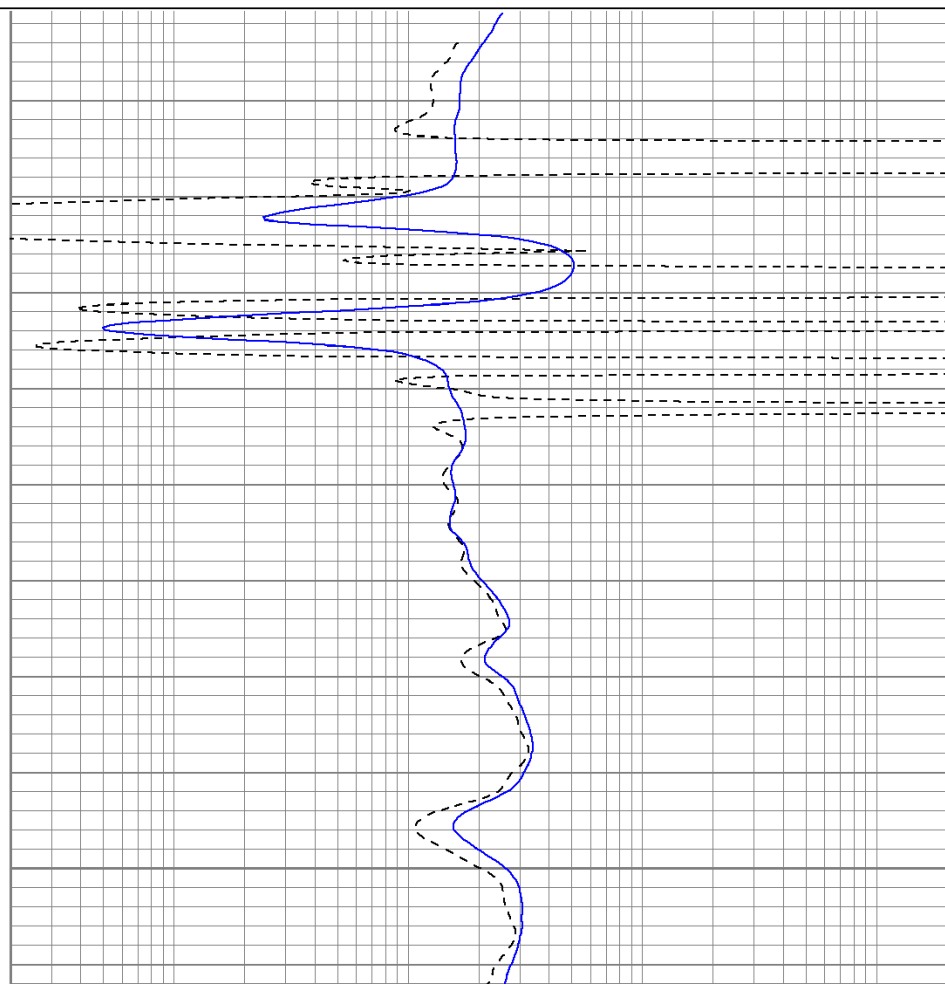
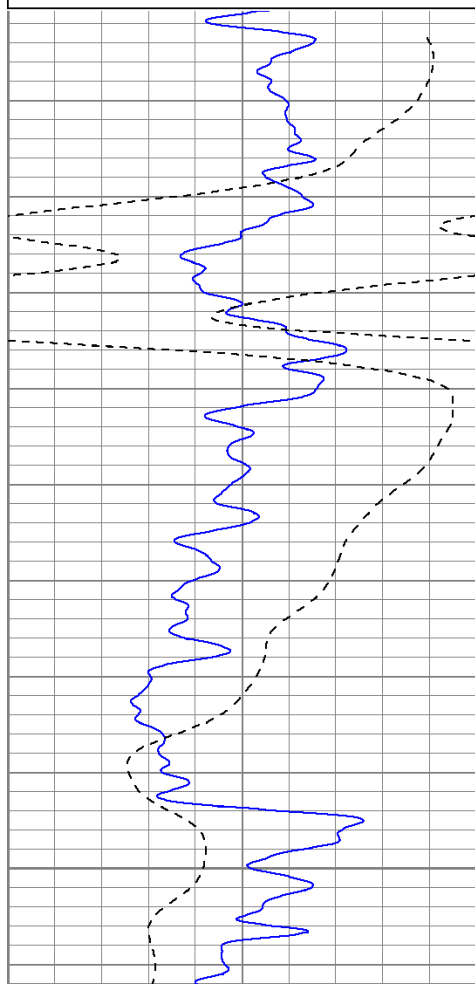
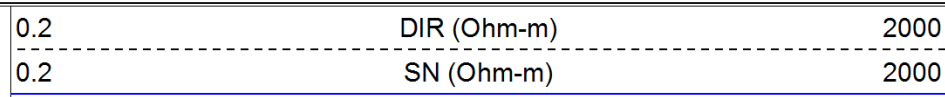
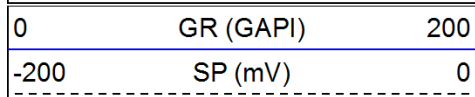
2000

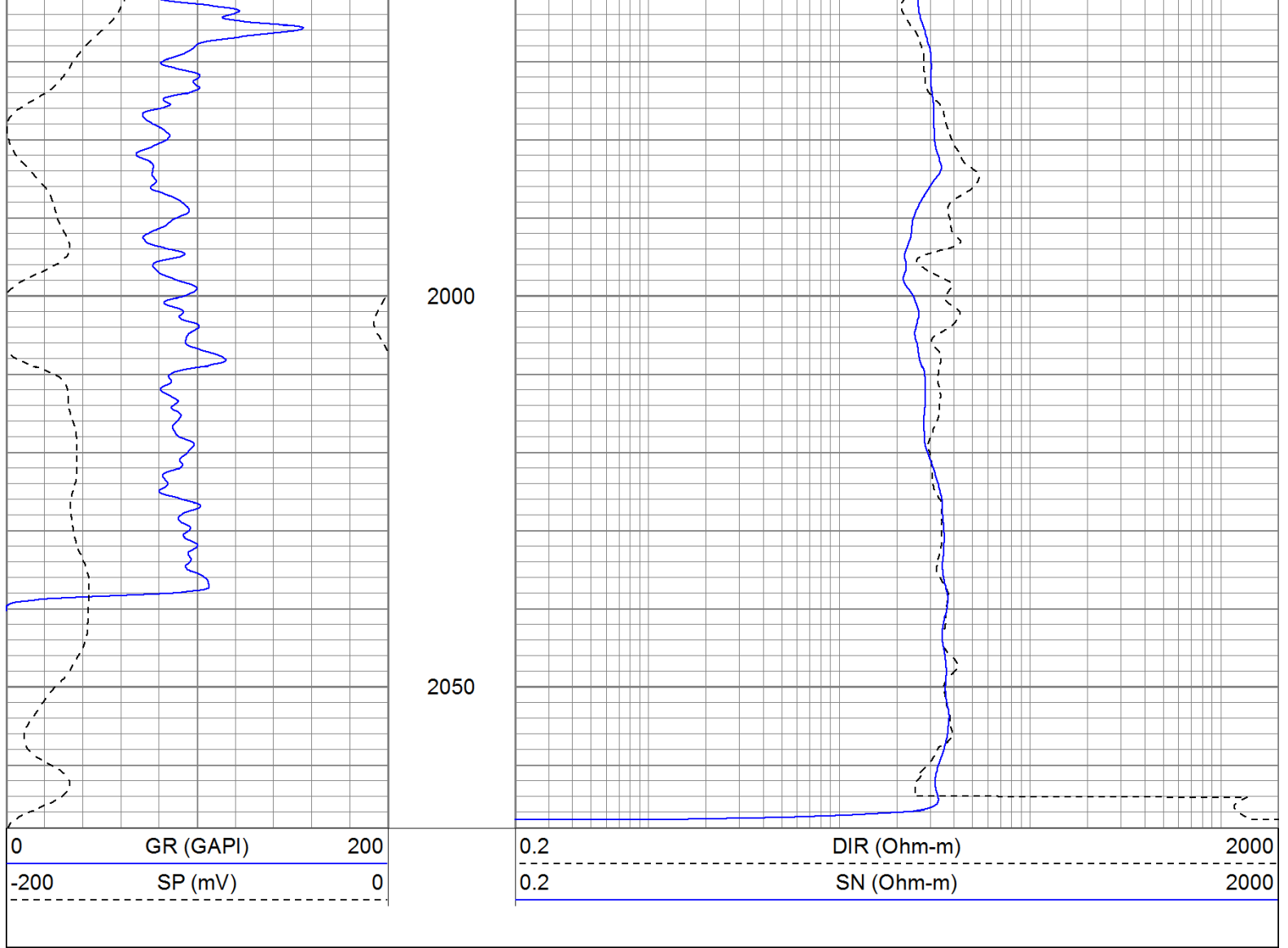




# Repeat Pass

Database File: icehouse.db  
 Dataset Pathname: pass1.1  
 Presentation Format: iel  
 Dataset Creation: Sat Jul 16 01:50:06 2011 by Calc Open-Cased 110302  
 Charted by: Depth in Feet scaled 1:240





### Calibration Report

Database File: icehouse.db  
 Dataset Pathname: pass1  
 Dataset Creation: Sat Jul 16 00:52:02 2011 by Log Open-Cased 110302

### Induction Tool Calibration Report

Serial Number: 903  
 Tool Model: Probe  
 Downhole Cal Performed: Sat Jun 18 15:02:12 2011  
 Surface Cal Performed: Sat Jun 18 17:40:00 2011  
 After Survey Verification Performed:

Surface Calibration:	Air	Loop	
Conductivity Reference:	0.000	500.000	mmho
Conductivity Reading:	-0.045	0.642	V
Internal Reference:	Zero	Cal	
Conductivity Reference:	0.000	500.000	mmho
Conductivity Reading:	0.006	0.641	V

Downhole Calibration:	Internal Zero	Internal Cal	
Conductivity Reference:	-0.702	499.904	mmho
Conductivity Reading:	-0.082	503.319	V
Short Normal Reference:	0.000	20.000	Ohm-m
Short Normal Reading:	0.006	0.233	V

Results:	Gain	Offset
Loop Conductivity:	728.211	32.770
Downhole Correction:	0.994	-0.621

Short Normal Resistivity:		88.245	-2.000	
After Survey Verification		Internal Zero	Internal Cal	
Conductivity Reading:		0.000	0.000	V
Conductivity Result:		0.000	0.000	mmho
Short Normal Reading:		0.000	0.000	V
Short Normal Result:		0.000	0.000	Ohm-m
Compensated Density Calibration Report				
Serial-Model:		901-2.75POH		
Source / Verifier:		/		
Master Calibration Performed:		Wed Jun 08 09:11:26 2011		
Before Survey Verification Performed:				
After Survey Verification Performed:				
Master Calibration				
	Density		Far Detector	Near Detector
Magnesium	1.710 g/cc		1001.79	578.48 cps
Aluminum	2.590 g/cc		180.36	300.39 cps
Spine Angle = 69.08		Density/Spine Ratio = 0.479		
	Size		Reading	
Small Ring	8.15 in		2.50 V	
Large Ring	16.00 in		4.57 V	
Before Survey Verification				
	Target		Measured	
After Survey Verification				
	Target		Measured	
Neutron Calibration Report				
Serial Number:		803		
Tool Model:		2.75POH		
Performed:		Wed Jun 08 13:12:55 2011		
Calibrator Value:		1	NAPI	
Calibrator Reading:		1	cps	
Sensitivity:		1	NAPI/cps	
Gamma Ray Calibration Report				
Serial Number:		804		
Tool Model:		2.75POH		
Performed:		Tue Jun 14 18:09:29 2011		
Calibrator Value:		1.0	GAPI	
Background Reading:		0.0	cps	
Calibrator Reading:		1.0	cps	

GAPI/cps

Sensor	Offset (ft)	Schematic	Description	Len (ft)	OD (in)	Wt (lb)
GR	29.58		None	0.75	1.50	5.00
			GR-2.75POH (804) Probe 2.75" Probe Open Hole Gamma Ray	3.73	2.75	43.00
NEU	24.04		NEU-2.75POH (803) Probe Epithermal	4.75	2.75	58.00
LSD DCAL SSD	16.21		CDL-2.75POH (901) Probe	8.43	2.75	106.00
	15.94					
	15.69					
DIC	6.24		IEL-Probe (903)	13.46	2.75	93.00
SP	2.25					
SN	1.71					
		Dataset:	icehouse.db: field/well/run1/pass1			
		Total Length:	31.11 ft			
		Total Weight:	305.00 lb			
		O.D.	2.75 in			