

**CHEVRON - MID-CONTINENT EBIZ
11111 S WILCREST DR - DO NOT MAIL
HOUSTON, Texas**

SKR
SKR 698-09-AV-11

H&P 318/H&P/318

Post Job Summary

Cement Surface Casing

Prepared for: DAN MEIER
Date Prepared: 3/10/09
Version: 1

Service Supervisor: JAMISON, PRICE

Submitted by: PRICE JAMISON

HALLIBURTON

The Road to Excellence Starts with Safety

Sold To #: 338668	Ship To #: 2713354	Quote #:	Sales Order #: 6551062
Customer: CHEVRON - MID-CONTINENT EBIZ	Customer Rep: MEIER, DAN		
Well Name: SKR	Well #: 698-09-AV-11	API/UMI #:	
Field: PICEANCE	City (SAP): PARACHUTE	County/Parish: Garfield	State: Colorado
Contractor: H&P 318	Rig/Platform Name/Num: H&P 318		
Job Purpose: Cement Surface Casing			
Well Type: Development Well	Job Type: Cement Surface Casing		
Sales Person: DUNNING, DUSTIN	Srv Supervisor: JAMISON, PRICE	MBU ID Emp #: 229155	

Job Personnel

HES Emp Name	Exp Hrs	Emp #	HES Emp Name	Exp Hrs	Emp #	HES Emp Name	Exp Hrs	Emp #
ANGLESTEIN, TROY Edward WM	5.0	436099	JAMISON, PRICE W	5.0	229155	smith, chris	5.0	452619
TALAROVICH, JEREMY	5.0	425449	VANALSTYNE, TROY L	5.0	420256			

Equipment

HES Unit #	Distance-1 way	HES Unit #	Distance-1 way	HES Unit #	Distance-1 way	HES Unit #	Distance-1 way
10616651C	120 mile	10719786	120 mile	10784064	120 mile	10973565	120 mile
11006314	120 mile						

Job Hours

Date	On Location Hours	Operating Hours	Date	On Location Hours	Operating Hours	Date	On Location Hours	Operating Hours
3/10/09	5	1						

TOTAL Total is the sum of each column separately

Job

Formation Name	Formation Depth (MD)	Top	Bottom	Form Type	Job depth MD	Job Depth TVD	Water Depth	Perforation Depth (MD)	From	To
				BHST	1044. ft	1044. ft				

Job Times

Called Out	Date	Time	Time Zone
On Location	10 - Mar - 2009	12:00	MST
Job Started	10 - Mar - 2009	16:30	MST
Job Completed	10 - Mar - 2009	20:12	MST
Departed Loc	10 - Mar - 2009	21:13	MST
	10 - Mar - 2009	22:15	MST

Well Data

Description	New / Used	Max pressure psig	Size in	ID in	Weight lbm/ft	Thread	Grade	Top MD ft	Bottom MD ft	Top TVD ft	Bottom TVD ft
OPEN HOLE				12.25							
CASING	Unknown		8.625	8.097	24.	8 RD	K-55		1055. 1044.		10555. 1044.

Sales/Rental/3rd Party (HES)

Description	Qty	Qty uom	Depth	Supplier
PLUG,CMTG,TOP,8 5/8,HWE,7.20 MIN/8.09 MA	1	EA		
PORT. DAS W/CEMWIN;ACQUIRE W/HES, ZI	1	JOB		
ADC (AUTO DENSITY CTRL) SYS, /JOB,ZI	1	JOB		

Tools and Accessories

Type	Size	Qty	Make	Depth	Type	Size	Qty	Make	Depth	Type	Size	Qty	Make
Guide Shoe					Packer					Top Plug			
Float Shoe					Bridge Plug					Bottom Plug			
Float Collar					Retainer					SSR plug set			
Insert Float										Plug Container			
Stage Tool										Centralizers			

Miscellaneous Materials

Gelling Agt	Conc	Surfactant	Conc	Acid Type	Qty	Conc	%
Treatment Fld	Conc	Inhibitor	Conc	Sand Type	Size	Qty	

Fluid Data									
Stage/Plug #: 1									
Fluid #	Stage Type	Fluid Name	Qty	Qty uom	Mixing Density lbm/gal	Yield ft ³ /sk	Mix Fluid Gal/sk	Rate bbl/min	Total Mix Fluid Gal/sk
1	FRESH WATER			bbl	8.33	.0	.0	4.0	
2	PolyFlake Dyed Spacer			bbl	8.33	.0	.0	4.0	
3	LEAD CEMENT	VERSACEM (TM) SYSTEM (452010)		sacks	12.3	2.38	13.75	8.0	
4	TAIL CEMENT	VERSACEM (TM) SYSTEM (452010)		sacks	12.8	2.11	11.75	7.0	
5	Fresh Water Displacement			bbl	8.33	.0	.0	8.0	
Calculated Values		Pressures		Volumes					
Displacement	63.6	Shut In: Instant		Lost Returns	NO	Cement Slurry	117.3	Pad	
Top Of Cement	SURFACE	5 Min		Cement Returns	16	Actual Displacement	63.6	Treatment	
Frac Gradient		15 Min		Spacers	50	Load and Breakdown		Total Job	231
Rates									
Circulating	RIG	Mixing	8	Displacement	8	Avg. Job	6		
Cement Left In Pipe	Amount	44.2 ft	Reason	Shoe Joint					
Frac Ring # 1 @	ID	Frac ring # 2 @	ID	Frac Ring # 3 @	ID	Frac Ring # 4 @	ID		
The Information Stated Herein Is Correct				Customer Representative Signature					

The Road to Excellence Starts with Safety

Sold To #: 338668	Ship To #: 2713354	Quote #:	Sales Order #: 6551062
Customer: CHEVRON - MID-CONTINENT EBIZ		Customer Rep: MEIER, DAN	
Well Name: SKR	Well #: 698-09-AV-11	API/UWI #:	
Field: PICEANCE	City (SAP): PARACHUTE	County/Parish: Garfield	State: Colorado
Legal Description:			
Lat: N 0 deg. OR N 0 deg. 0 min. 0 secs.		Long: E 0 deg. OR E 0 deg. 0 min. 0 secs.	
Contractor: H&P 318	Rig/Platform Name/Num: H&P 318		
Job Purpose: Cement Surface Casing			Ticket Amount:
Well Type: Development Well	Job Type: Cement Surface Casing		
Sales Person: DUNNING, DUSTIN	Srvc Supervisor: JAMISON, PRICE	MBU ID Emp #: 229155	

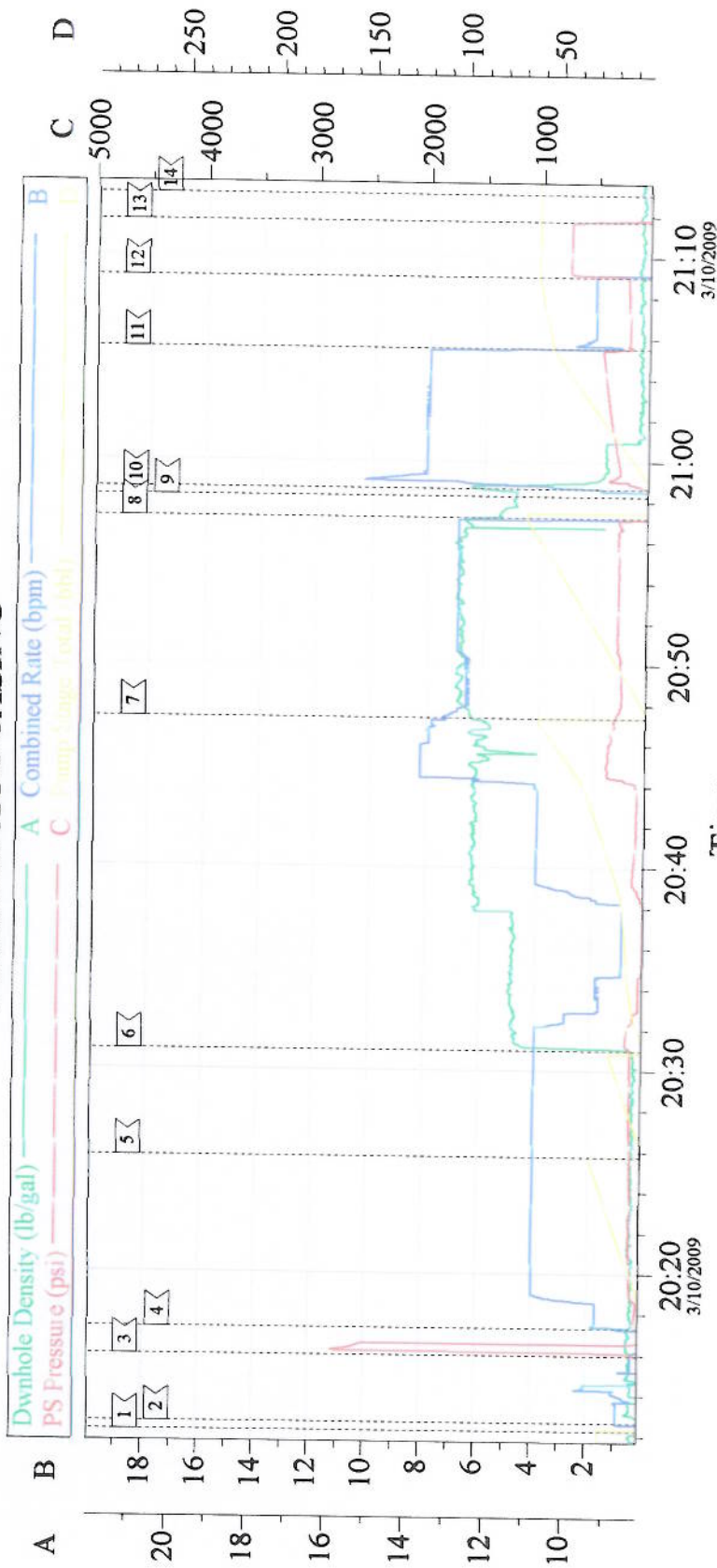
Activity Description	Date/Time	Cht #	Rate bbl/min	Volume bbl		Pressure psig		Comments
				Stage	Total	Tubing	Casing	
Call Out	03/10/2009 12:00							TD 1055 TP 1044 SHOE 44.20 8 5/8 CASING K- 55 24 # 9 MW 12.25 OPEN HOLE
Depart Yard Safety Meeting	03/10/2009 13:30							
Crew Leave Yard	03/10/2009 14:00							
Arrive At Loc	03/10/2009 16:30							
Assessment Of Location Safety Meeting	03/10/2009 16:45							
Pre-Rig Up Safety Meeting	03/10/2009 16:55							
Wait on Customer or Customer Sub-Contractor Equip	03/10/2009 18:00							RUNNING CASING
Wait on Customer or Customer Sub-Contractor Equipm	03/10/2009 19:30							ON BOTTOM
Pre-Job Safety Meeting	03/10/2009 19:40							
Start Job	03/10/2009 20:12							
Prime Pumps	03/10/2009 20:12		1	2				
Test Lines	03/10/2009 20:15						2000. 0	
Pump Spacer 1	03/10/2009 20:17		4	30			130.0	FRESH WATER
Pump Spacer 2	03/10/2009 20:25		4	20			130.0	PLOYFLAKE WITH DYE
Pump Lead Cement	03/10/2009 20:30		8	59.3			370.0	12.3 PPG YIELD 2.38 WAT/REQ 13.75 140 SKS

Cementing Job Log

Activity Description	Date/Time	Cht #	Rate bbl/min	Volume bbl		Pressure psig		Comments
				Stage	Total	Tubing	Casing	
Pump Tail Cement	03/10/2009 20:47		7	58.2			290.0	12.8 PPG YIELD 2.11 WAT/REQ 11.75 155 SKS
Shutdown	03/10/2009 20:57							
Drop Plug	03/10/2009 20:58							
Pump Displacement	03/10/2009 20:58		8					
Slow Rate	03/10/2009 21:05		2	53			430.0	
Bump Plug	03/10/2009 21:09		2	63.6			230.0	PRESSURED UP TO 753 PSI
Check Floats	03/10/2009 21:11							FLOATS HELD
End Job	03/10/2009 21:13							CEMENT BACK TO SURFACE 16 BBLS
Post-Job Safety Meeting (Pre Rig-Down)	03/10/2009 21:18							CASING WAS NOT MOVED THROUGHOUT JOB
Depart Location Safety Meeting	03/10/2009 22:10							GOOD CIRCULATION THROUGHOUT JOB
Crew Leave Location	03/10/2009 22:15							

CHEVRON

8 5/8 SURFACE CASING



Event Log			
1 start job	20:12:15	2 prime lines	20:12:39
4 start fresh water spacer	20:17:19	5 start fresh water with poly & dye	20:25:43
7 start tail cement	20:47:22	8 shut down	20:57:13
10 start displacement	20:58:40	11 slow rate	21:05:31
13 check floats	21:11:44	14 end job	21:13:02
		3 test lines	20:15:57
		6 start lead cement	20:30:58
		9 drop plug	20:58:16
		12 bump plug	21:09:00

Customer: CHEVRON	Job Date: 3/10/08	Ticket #: 6551062
Well Description: SURFACE	CEMENTER BILL JAMISON	ADC USED YES
LEASE SKR	WELL # 698-09-AV-11	CO REP DAN MEIER

HALIBURTON
 CemWin v1.5.0
 10-Mar-09 21:33