

---

# **CHEVRON - MID-CONTINENT EBIZ**

---

**SKR 698-09-AV-11  
SKINNER RIDGE  
Garfield County , Colorado**

**Cement Production Casing**  
**02-Apr-2009**

**Job Site Documents**

## Cementing Job Summary

The Road to Excellence Starts with Safety

Sold To #: 338668	Ship To #: 2713354	Quote #:	Sales Order #: 6585521
Customer: CHEVRON - MID-CONTINENT EBIZ		Customer Rep:	
Well Name: SKR		Well #: 698-09-AV-11	API/UWI #:
Field: SKINNER RIDGE	City (SAP): PARACHUTE	County/Parish: Garfield	State: Colorado
Contractor: H&P 318	Rig/Platform Name/Num: H&P 318		
Job Purpose: Cement Production Casing			
Well Type: Development Well		Job Type: Cement Production Casing	
Sales Person: DUNNING, DUSTIN		Srvc Supervisor: BROST, ROBERT	MBU ID Emp #: 394382

## Job Personnel

HES Emp Name	Exp Hrs	Emp #	HES Emp Name	Exp Hrs	Emp #	HES Emp Name	Exp Hrs	Emp #
BROST, ROBERT W	8	394382	BROWN, TRAVIS A	8	396848	chastain, derrick	8	455848
CREECH, STEVEN Michael	8	420183	HENSLEY, JASON Paul	8	447332	ross, chuck	8	453128
WILKE, ANDREW J	8	398822						

## Equipment

HES Unit #	Distance-1 way	HES Unit #	Distance-1 way	HES Unit #	Distance-1 way	HES Unit #	Distance-1 way
10240238C	120 mile	10551730C	120 mile	10565341	120 mile	10829469	120 mile
10995025	120 mile						

## Job Hours

Date	On Location Hours	Operating Hours	Date	On Location Hours	Operating Hours	Date	On Location Hours	Operating Hours
4-2-09	6	2						
TOTAL								

Total is the sum of each column separately

Job				Job Times			
Formation Name	Formation Depth (MD)	Top	Bottom	Called Out	Date	Time	Time Zone
Form Type			BHST	On Location	02 - Apr - 2009	09:00	MST
Job depth MD	6180. ft		Job Depth TVD	Job Started	02 - Apr - 2009	11:20	MST
Water Depth			Wk Ht Above Floor	Job Completed	02 - Apr - 2009	12:51	MST
Perforation Depth (MD)	From		To	Departed Loc	02 - Apr - 2009	15:00	MST

## Well Data

Description	New / Used	Max pressure psig	Size in	ID in	Weight lbm/ft	Thread	Grade	Top MD ft	Bottom MD ft	Top TVD ft	Bottom TVD ft
-------------	------------	-------------------	---------	-------	---------------	--------	-------	-----------	--------------	------------	---------------

Sales/Rental/3<sup>rd</sup> Party (HES)

Description	Qty	Qty uom	Depth	Supplier
PLUG, CMTG, TOP, 4 1/2, HWE, 3.65 MIN/4.14 MA	1	EA		
ADC (AUTO DENSITY CTRL) SYS, /JOB, ZI	1	JOB		
PORT. DAS W/CEMWIN; ACQUIRE W/HES, ZI	1	JOB		

## Tools and Accessories

Type	Size	Qty	Make	Depth	Type	Size	Qty	Make	Depth	Type	Size	Qty	Make
Guide Shoe					Packer					Top Plug	4.5	1	
Float Shoe					Bridge Plug					Bottom Plug			
Float Collar					Retainer					SSR plug set			
Insert Float										Plug Container	4.5	1	
Stage Tool										Centralizers			

## Miscellaneous Materials

Gelling Agt	Conc	Surfactant	Conc	Acid Type	Qty	Conc	%
Treatment Fld	Conc	Inhibitor	Conc	Sand Type	Size	Qty	



## Cementing Job Summary

Fluid Data									
Stage/Plug #: 1									
Fluid #	Stage Type	Fluid Name	Qty	Qty uom	Mixing Density lbm/gal	Yield ft <sup>3</sup> /sk	Mix Fluid Gal/sk	Rate bbl/min	Total Mix Fluid Gal/sk
1	Dyed Polyflake Spacer		40.00	bbl	8.33	.0	.0	4	
2	Lead Cement	VARICEM (TM) CEMENT (452009)	310.0	sacks	12.8	1.6	7.31	6	
3	Tail Cement	VARICEM (TM) CEMENT (452009)	660.0	sacks	13.2	1.47	6.32	6	
4	KCL DISPLACEMENT		95.00	bbl	8.4	.0	.0	10	
Calculated Values		Pressures		Volumes					
Displacement	95	Shut In: Instant		Lost Returns	no	Cement Slurry	286	Pad	
Top Of Cement	surface	5 Min		Cement Returns	no	Actual Displacement	94.6	Treatment	
Frac Gradient		15 Min		Spacers	40	Load and Breakdown		Total Job	
Rates									
Circulating rig		Mixing	6.5	Displacement	10	Avg. Job	6.5		
Cement Left In Pipe	Amount 48 ft	Reason	Shoe Joint						
Frac Ring # 1 @	ID	Frac ring # 2 @	ID	Frac Ring # 3 @	ID	Frac Ring # 4 @	ID		
The Information Stated Herein Is Correct				Customer Representative Signature					

## Cementing Job Log

*The Road to Excellence Starts with Safety*

Sold To #: 338668	Ship To #: 2713354	Quote #:	Sales Order #: 6585521
Customer: CHEVRON - MID-CONTINENT EBIZ		Customer Rep:	
Well Name: SKR	Well #: 698-09-AV-11	API/UWI #:	
Field: SKINNER RIDGE	City (SAP): PARACHUTE	County/Parish: Garfield	State: Colorado
Legal Description:			
Lat:		Long:	
Contractor: H&P 318		Rig/Platform Name/Num: H&P 318	
Job Purpose: Cement Production Casing		Ticket Amount:	
Well Type: Development Well	Job Type: Cement Production Casing		
Sales Person: DUNNING, DUSTIN	Srv Supervisor: BROST, ROBERT	MBU ID Emp #: 394382	

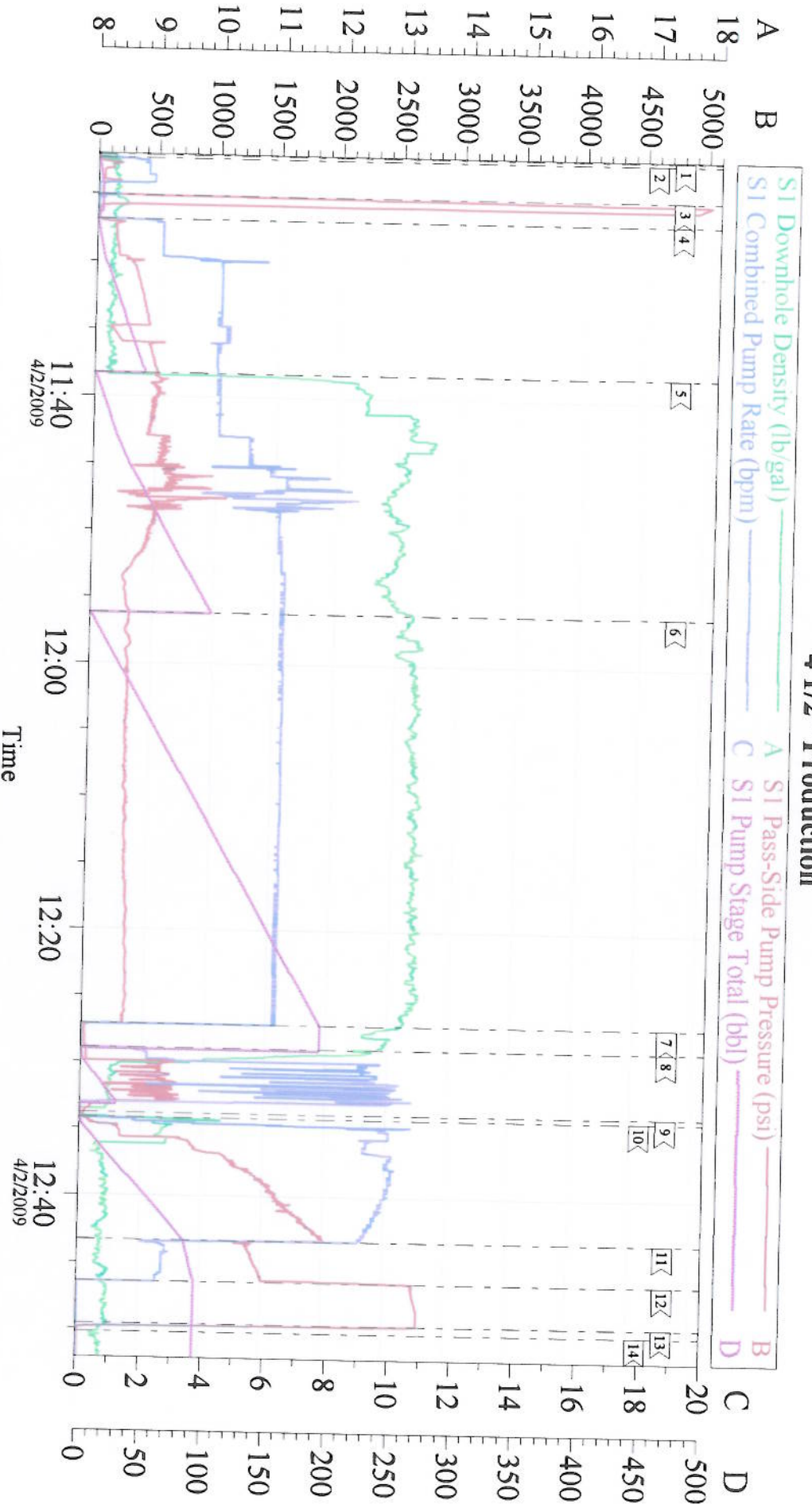
Activity Description	Date/Time	Cht #	Rate bbl/min	Volume bbl		Pressure psig		Comments
				Stage	Total	Tubing	Casing	
Call Out	04/02/2009 05:30							elite#2 4 1/2" production 6180td 6156tp 48'shoe 10.4ppg mud 7 7/8"hole
Safety Huddle	04/02/2009 06:30							no cell phones use seatbelts watch following distance
Arrive At Loc	04/02/2009 09:00							
Assessment Of Location Safety Meeting	04/02/2009 09:20							walk threw rig up looking for haz
Rig-Up Equipment	04/02/2009 09:30							
Rig-Up Completed	04/02/2009 10:30							floor rig up split bails on floor rig up manifold less over head and quicker cleanup mid job.
Safety Meeting - Pre Job	04/02/2009 10:45							attn by rig crew pump crew comp rep
Start Job	04/02/2009 11:20			3			160.0	fill lines fresh water BP=h2o= 9 BP=cmt=9
Pressure Test	04/02/2009 11:25						5015.0	good test no leaks
Pump Spacer 1	04/02/2009 11:27			40			350.0	poly spcr last 20 bls spcer
Pump Lead Cement	04/02/2009 11:38			88			560.0	310sks 12.8ppg 1.6yield 7.31h2o
Pump Tail Cement	04/02/2009 11:56			173			349.0	630sks 13.2ppg 1.47yield 6.32h2o
Shutdown	04/02/2009 12:27							
Clean Lines	04/02/2009 12:29							to pit
Drop Top Plug	04/02/2009 12:34							plug left container



## Cementing Job Log

Activity Description	Date/Time	Cht #	Rate bbl/ min	Volume bbl		Pressure psig		Comments
				Stage	Total	Tubing	Casing	
Pump Displacement	04/02/2009 12:35			95			1850. 0	1.5bags kcl per 10 bls of disp. slowed to 3 bls min at 85bls gone.
Bump Plug	04/02/2009 12:47						1513. 0	took 1000 over
Check Floats	04/02/2009 12:50						2776. 0	floats held
End Job	04/02/2009 12:51							good circulation during job
Safety Meeting - Pre Rig- Down	04/02/2009 13:15							no cmt to surface had small amount of poly to shakers
Safety Meeting - Departing Location	04/02/2009 15:00							Thank you Robert Brost and crew

# Chevron 4 1/2" Production



Customer: CHEVRON - MID-CONTINENT  
Well Description: Skinner Ridge 698-09-AV-11  
Company Rep: Dan Meier

Job Date: 02-Apr-2009  
Job Type: Production  
Cement Supervisor: Robert Brost

Sales Order #: 6585521  
ADC Used: No  
Elite #/Operator: #2/Sтивен Creech