
CHEVRON - MID-CONTINENT EBIZ

**SKR 698-09-AV-10
SKINNER RIDGE
Garfield County , Colorado**

Cement Production Casing 04-May-2009

Job Site Documents

The Road to Excellence Starts with Safety

Sold To #: 338668	Ship To #: 2713348	Quote #:	Sales Order #: 6652774
Customer: CHEVRON - MID-CONTINENT EBIZ		Customer Rep: Meir, Dan	
Well Name: SKR		Well #: 698-09-AV-10	API/UWI #: 05-045-17293
Field: SKINNER RIDGE	City (SAP): PARACHUTE	County/Parish: Garfield	State: Colorado
Lat: N 39.551 deg. OR N 39 deg. 33 min. 3.668 secs.		Long: W 108.33 deg. OR W -109 deg. 40 min. 12.619 secs.	
Contractor: H&P 318	Rig/Platform Name/Num: H&P 318		
Job Purpose: Cement Production Casing			
Well Type: Development Well		Job Type: Cement Production Casing	
Sales Person: DUNNING, DUSTIN		Srv Supervisor: LEIST, JAMES	MBU ID Emp #: 362787

Job Personnel

HES Emp Name	Exp Hrs	Emp #	HES Emp Name	Exp Hrs	Emp #	HES Emp Name	Exp Hrs	Emp #
BLAKE, TIMOTHY Kenn	6	459313	BROWN, TRAVIS A	6	396848	JENSEN, SHANE Lynn	6	441759
LEIST, JAMES R	6	362787	NELSON, RYAN Cody	6	386514	WILKE, ANDREW J	6	398822

Equipment

HES Unit #	Distance-1 way	HES Unit #	Distance-1 way	HES Unit #	Distance-1 way	HES Unit #	Distance-1 way
10011429	120 mile	10567589C	120 mile	10886087	120 mile	10951249	120 mile
10995027	120 mile	6334	120 mile				

Job Hours

Date	On Location Hours	Operating Hours	Date	On Location Hours	Operating Hours	Date	On Location Hours	Operating Hours
5-4-09	6	3						
TOTAL			Total is the sum of each column separately					

Job

Formation Name	Formation Depth (MD)	Top	Bottom	Form Type	Job depth MD	Water Depth	Perforation Depth (MD)	From	To
				BHST	6310. ft				
					Job Depth TVD	Wk Ht Above Floor			
					6310. ft	4. ft			

Job Times

	Date	Time	Time Zone
Called Out	04 - May - 2009	05:00	MST
On Location	04 - May - 2009	08:30	MST
Job Started	04 - May - 2009	11:25	MST
Job Completed	04 - May - 2009	13:00	MST
Departed Loc	04 - May - 2009	14:30	MST

Well Data

Description	New / Used	Max pressure psig	Size in	ID in	Weight lbm/ft	Thread	Grade	Top MD ft	Bottom MD ft	Top TVD ft	Bottom TVD ft
7 7/8 open hole				7.875				1019.	6310.		
4 1/2 casing	Unknown		4.5	4.	11.6			0	6287.		
8 5/8 surface casing	Unknown		8.625	8.097	24.			0	1019.		

Sales/Rental/3rd Party (HES)

Description	Qty	Qty uom	Depth	Supplier
PLUG, CMTG, TOP, 4 1/2, HWE, 3.65 MIN/4.14 MA	1	EA		
PORT. DAS W/CEMWIN, ACQUIRE W/HES, ZI	1	JOB		
ADC (AUTO DENSITY CTRL) SYS, /JOB, ZI	1	JOB		

Tools and Accessories

Type	Size	Qty	Make	Depth	Type	Size	Qty	Make	Depth	Type	Size	Qty	Make
Guide Shoe					Packer					Top Plug	4 1/2	1	HES
Float Shoe					Bridge Plug					Bottom Plug			
Float Collar					Retainer					SSR plug set			
Insert Float										Plug Container	4 1/2	1	HES
Stage Tool										Centralizers			

Miscellaneous Materials											
Gelling Agt	Conc	Surfactant	Conc	Acid Type	Qty	Conc	%	Treatment Fld	Conc	Inhibitor	Conc
				Sand Type	Size	Qty					
Fluid Data											
Stage/Plug #: 1											
Fluid #	Stage Type	Fluid Name	Qty	Qty uom	Mixing Density lbm/gal	Yield ft ³ /sk	Mix Fluid Gal/sk	Rate bbl/min	Total Mix Fluid Gal/sk		
1	Polyflake Spacer		40	bbl	8.33	.0	.0	.0			
2	Lead Cement	VARICEM (TM) CEMENT (452009)	330	sacks	12.8	1.61	7.31		7.67		
3	Tail Cement	VARICEM (TM) CEMENT (452009)	660	sacks	13.2	1.47	6.32		7.0		
4	KCL DISPLACEMENT		96.7	bbl	8.43	.0	.0	.0			
Calculated Values			Pressures			Volumes					
Displacement	96.7	Shut In: Instant			Lost Returns	No	Cement Slurry	267.4	Pad		
Top Of Cement		5 Min			Cement Returns	0	Actual Displacement	96.7	Treatment		
Frac Gradient		15 Min			Spacers		Load and Breakdown		Total Job		
Rates											
Circulating		Mixing	6	Displacement	8	Avg. Job	6.5				
Cement Left In Pipe	Amount	48.6 ft	Reason	Shoe Joint							
Frac Ring # 1 @	ID	Frac ring # 2 @	ID	Frac Ring # 3 @	ID	Frac Ring # 4 @	ID				
The Information Stated Herein Is Correct					Customer Representative Signature						

The Road to Excellence Starts with Safety

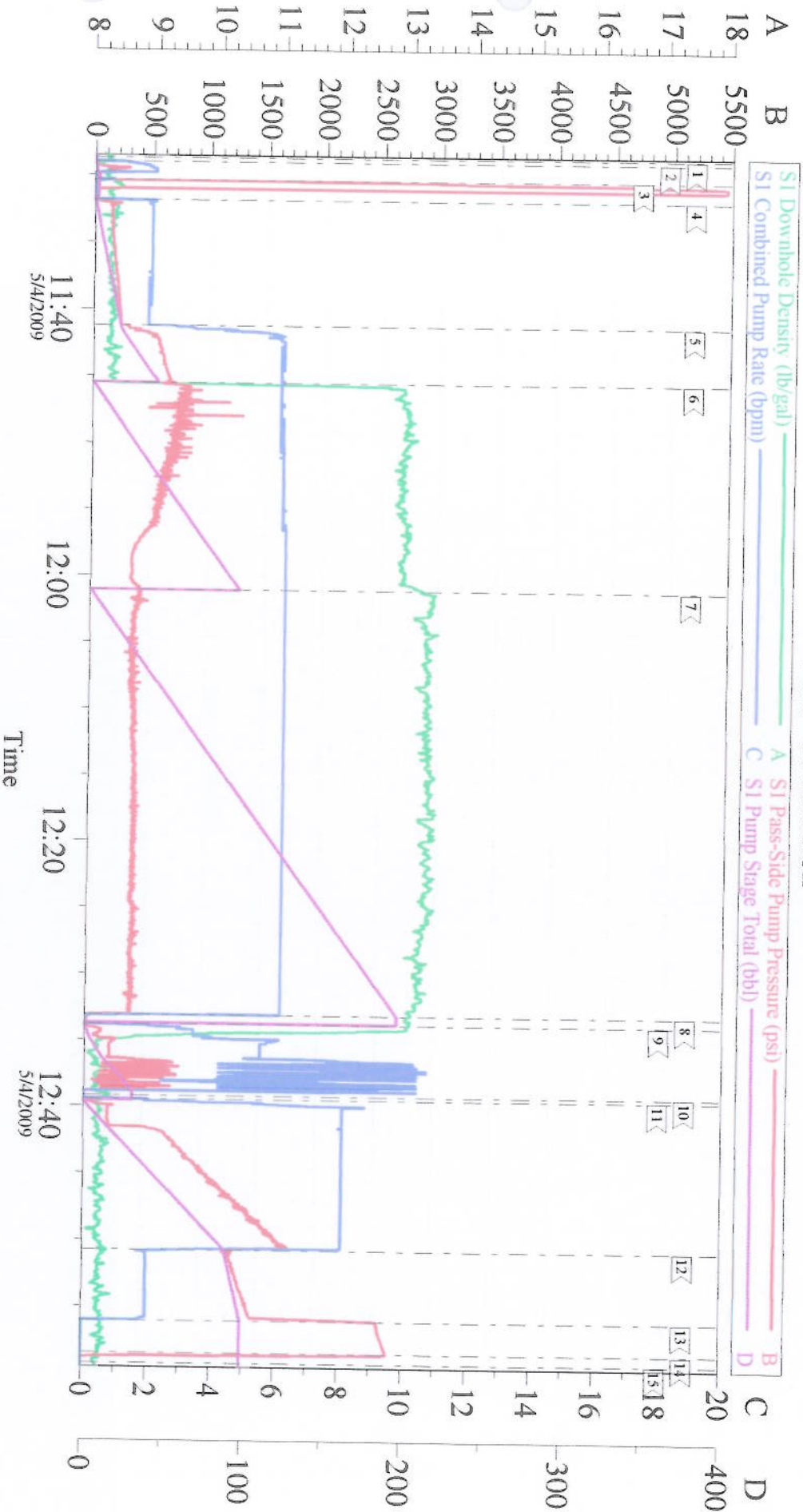
Sold To #: 338668	Ship To #: 2713348	Quote #:	Sales Order #: 6652774
Customer: CHEVRON - MID-CONTINENT EBIZ	Customer Rep: Meir, Dan		
Well Name: SKR	Well #: 698-09-AV-10	API/UWI #: 05-045-17293	
Field: SKINNER RIDGE	City (SAP): PARACHUTE	County/Parish: Garfield	State: Colorado
Legal Description:			
Lat: N 39.551 deg. OR N 39 deg. 33 min. 3.668 secs.		Long: W 108.33 deg. OR W -109 deg. 40 min. 12.619 secs.	
Contractor: H&P 318	Rig/Platform Name/Num: H&P 318		
Job Purpose: Cement Production Casing			Ticket Amount:
Well Type: Development Well	Job Type: Cement Production Casing		
Sales Person: DUNNING, DUSTIN	Srv Supervisor: LEIST, JAMES	MBU ID Emp #: 362787	

Activity Description	Date/Time	Cht #	Rate bbl/min	Volume bbl		Pressure psig		Comments
				Stage	Total	Tubing	Casing	
Call Out	05/04/2009 05:00							TP-6287, S.J.-48.6, MUD#- 10.2 HOLE 7 7/8" SURFACE SET AT 1019'
Pre-Convoy Safety Meeting	05/04/2009 06:30							WITH ALL HES PERSONNEL
Crew Leave Yard	05/04/2009 07:00							GOOD CIRULATION THROUGHOUT JOB, NO PIPE MOVEMENT DURING CEMENT JOB
Arrive At Loc	05/04/2009 08:30							STILL RUNNING CASING, RIG CIRULATED 1 HOUR PRIOR TO CEMENT JOB, RIGS CIRULATING PSI WAS 574 @ 80 STROKES/MIN
Assessment Of Location Safety Meeting	05/04/2009 08:45							WITH ALL HES PERSONNEL
Pre-Rig Up Safety Meeting	05/04/2009 09:00							WITH ALL HES PERSONNEL
Rig-Up Completed	05/04/2009 10:30							
Pre-Job Safety Meeting	05/04/2009 11:15							WITH ALL ON LOCATION PERSONNEL
Start Job	05/04/2009 11:28							
Pressure Test	05/04/2009 11:29							5000 PSI
Pump Spacer 1	05/04/2009 11:31		6	40			200.0	FRESH WATER/ POLYFLAKE
Pump Lead Cement	05/04/2009 11:45		6	94.6			640.0	330 SKS, 12.8 PPG, 1.61 FT3/SK, 7.31 GAL/SK

Cementing Job Log

Activity Description	Date/Time	Cht #	Rate bbl/ min	Volume bbl		Pressure psig		Comments
				Stage	Total	Tubing	Casing	
Pump Tail Cement	05/04/2009 12:00		6	172.8			450.0	660 SKS, 13.2 PPG, 1.47 FT3/SK, 6.32 GAL/SK
Shutdown	05/04/2009 12:33							CLEAN LINES TO PIT
Drop Top Plug	05/04/2009 12:38							AWAY
Pump Displacement	05/04/2009 12:39		8	96.7			1675. 0	
Slow Rate	05/04/2009 12:50		2	86.7			1440. 0	TO BUMP PLUG
Bump Plug	05/04/2009 12:56		2	96.7			2550. 0	
Check Floats	05/04/2009 12:58							FLOATS ARE HOLDING
End Job	05/04/2009 13:00							
Pre-Rig Down Safety Meeting	05/04/2009 13:05							WITH ALL HES PERSONNEL
Rig-Down Completed	05/04/2009 14:30							
Pre-Convoy Safety Meeting	05/04/2009 14:35							WITH ALL HES PERSONNEL
Crew Leave Location	05/04/2009 14:40							
Comment	05/04/2009 14:41							THANKYOU FOR USING HALLIBURTON CEMENT, JAMES LEIST, RYAN NELSON AND CREW

Chevron 4 1/2" Production



Local Event Log

1	START JOB	11:28:41	2	PRIME LINES	11:28:58	3	TEST LINES	11:30:20
4	PUMP SPACER	11:31:50	5	INCREASE RATE	11:41:12	6	PUMP LEAD CEMENT	11:45:31
7	PUMP TAIL CEMENT	12:01:03	8	SHUT DOWN	12:33:07	9	WASH PUMPS & LINES	12:33:49
10	DROP TOP PLUG	12:39:11	11	START DISPLACEMENT	12:39:28	12	SLOW RATE	12:50:47
13	LAND PLUG	12:56:06	14	CHECK FLOATS/FLOATS HELD	12:58:32	15	END JOB	12:59:18

Customer: CHEVRON - MID-CONTINENT
Well Description: Skinner Ridge 698-09-AV-10
Company Rep: Dan Meir

Job Date: 04-May-2009
Job Type: Production
Cement Supervisor: James Leist

Sales Order #: 6652774
ADC Used: Yes
Elite #/Operator: #3/Travis Brown