
CHEVRON - MID-CONTINENT EBIZ

**SKR 698-09-AV-09
SKINNER RIDGE
Garfield County , Colorado**

**Cement Production Casing
31-Mar-2009**

Job Site Documents

The Road to Excellence Starts with Safety

Sold To #: 338668	Ship To #: 2713347	Quote #:	Sales Order #: 6585506
Customer: CHEVRON - MID-CONTINENT EBIZ	Customer Rep: Meier, Dan		
Well Name: SKR	Well #: 698-09-AV-09	API/UWI #: 05-045-17294	
Field: SKINNER RIDGE	City (SAP): PARACHUTE	County/Parish: Garfield	State: Colorado
Contractor: H&P 318	Rig/Platform Name/Num: H&P 318		
Job Purpose: Cement Production Casing			
Well Type: Development Well	Job Type: Cement Production Casing		
Sales Person: DUNNING, DUSTIN	Srv Supervisor: DEROSA, JAY	MBU ID Emp #: 338788	

Job Personnel

HES Emp Name	Exp Hrs	Emp #	HES Emp Name	Exp Hrs	Emp #	HES Emp Name	Exp Hrs	Emp #
ANGLESTEIN, TROY Edward WM		436099	Brun, Justin		459269	DEROSA, JAY M		338788
Dickey, Matthew		457739	PONDER, THOMAS Lynn		427112	REEVES, BRANDON W		287883
Smith, Chris		452619	Sullivan, Mark		425453			

Equipment

HES Unit #	Distance-1 way	HES Unit #	Distance-1 way	HES Unit #	Distance-1 way	HES Unit #	Distance-1 way
10025029	120 mile	10616651C	120 mile	10829463	120 mile	10829466	120 mile

Job Hours

Date	On Location Hours	Operating Hours	Date	On Location Hours	Operating Hours	Date	On Location Hours	Operating Hours
3-31-09	5	2						

TOTAL

Total is the sum of each column separately

Job

Job Times

Formation Name	Formation Depth (MD)	Top	Bottom	Called Out	Date	Time	Time Zone
Form Type			BHST	On Location	31 - Mar - 2009	00:45	MST
Job depth MD	6100. ft		Job Depth TVD	Job Started	31 - Mar - 2009	05:14	MST
Water Depth			Wk Ht Above Floor	Job Completed	31 - Mar - 2009	07:06	MST
Perforation Depth (MD)	From		To	Departed Loc	31 - Mar - 2009	09:30	MST

Well Data

Description	New / Used	Max pressure psig	Size in	ID in	Weight lbm/ft	Thread	Grade	Top MD ft	Bottom MD ft	Top TVD ft	Bottom TVD ft
7 7/8 Open Hole Section				7.875				1050.	6100.		
4 1/2 Production Casing	Unknow n		4.5	4.	11.6				6073.57.		
8 5/8 Surface Casing	Unknow n		8.625	8.097	24.				1050.		

Sales/Rental/3rd Party (HES)

Description	Qty	Qty uom	Depth	Supplier
PLUG,CMTG,TOP,4 1/2,HVE,3.65 MIN/4.14 MA	1	EA		
PORT. DAS W/CEMWIN;ACQUIRE W/HES, ZI	1	JOB		
ADC (AUTO DENSITY CTRL) SYS, /JOB,ZI	1	JOB		

Tools and Accessories

Type	Size	Qty	Make	Depth	Type	Size	Qty	Make	Depth	Type	Size	Qty	Make
Guide Shoe					Packer					Top Plug	4.5	1	
Float Shoe					Bridge Plug					Bottom Plug			
Float Collar					Retainer					SSR plug set			
Insert Float										Plug Container	4.5	1	
Stage Tool										Centralizers			

HALLIBURTON

Cementing Job Summary

Miscellaneous Materials												
Gelling Agt		Conc		Surfactant		Conc		Acid Type		Qty		Conc %
Treatment Fld		Conc		Inhibitor		Conc		Sand Type		Size		Qty
Fluid Data												
Stage/Plug #: 1												
Fluid #	Stage Type	Fluid Name	Qty	Qty uom	Mixing Density lbm/gal	Yield ft ³ /sk	Mix Fluid Gal/sk	Rate bbl/min	Total Mix Fluid Gal/sk			
1	Dyed Polyflake Spacer		40	bbl	8.33	.0	.0	.0				
2	Lead Cement	VARICEM (TM) CEMENT (452009)	305	sacks	12.8	1.61	7.31		7.7			
	7.704 Gal	FRESH WATER										
3	Tail Cement	VARICEM (TM) CEMENT (452009)	640	sacks	13.2	1.47	6.32		6.72			
	6.719 Gal	FRESH WATER										
4	KCL DISPLACEMENT		93.5	bbl	8.4	.0	.0	.0				
Calculated Values			Pressures			Volumes						
Displacement	93.5	Shut In: Instant		Lost Returns	no	Cement Slurry	255.1	Pad				
Top Of Cement	Surface	5 Min		Cement Returns		Actual Displacement	93.4	Treatment				
Frac Gradient		15 Min		Spacers	40bbls	Load and Breakdown		Total Job				
Rates												
Circulating	Rig	Mixing	5	Displacement	9	Avg. Job						
Cement Left In Pipe	Amount	47.11 ft	Reason	Shoe Joint								
Frac Ring # 1 @	ID	Frac ring # 2 @	ID	Frac Ring # 3 @	ID	Frac Ring # 4 @	ID					
The Information Stated Herein Is Correct				Customer Representative Signature								

The Road to Excellence Starts with Safety

Sold To #: 338668	Ship To #: 2713347	Quote #:	Sales Order #: 6585506
Customer: CHEVRON - MID-CONTINENT EBIZ	Customer Rep: Meier, Dan		
Well Name: SKR	Well #: 698-09-AV-09	API/UWI #: 05-045-17294	
Field: SKINNER RIDGE	City (SAP): PARACHUTE	County/Parish: Garfield	State: Colorado
Legal Description:			
Lat: N 0 deg. OR N 0 deg. 0 min. 0 secs.		Long: E 0 deg. OR E 0 deg. 0 min. 0 secs.	
Contractor: H&P 318	Rig/Platform Name/Num: H&P 318		
Job Purpose: Cement Production Casing	Ticket Amount:		
Well Type: Development Well	Job Type: Cement Production Casing		
Sales Person: DUNNING, DUSTIN	Srv Supervisor: DEROSA, JAY	MBU ID Emp #: 338788	

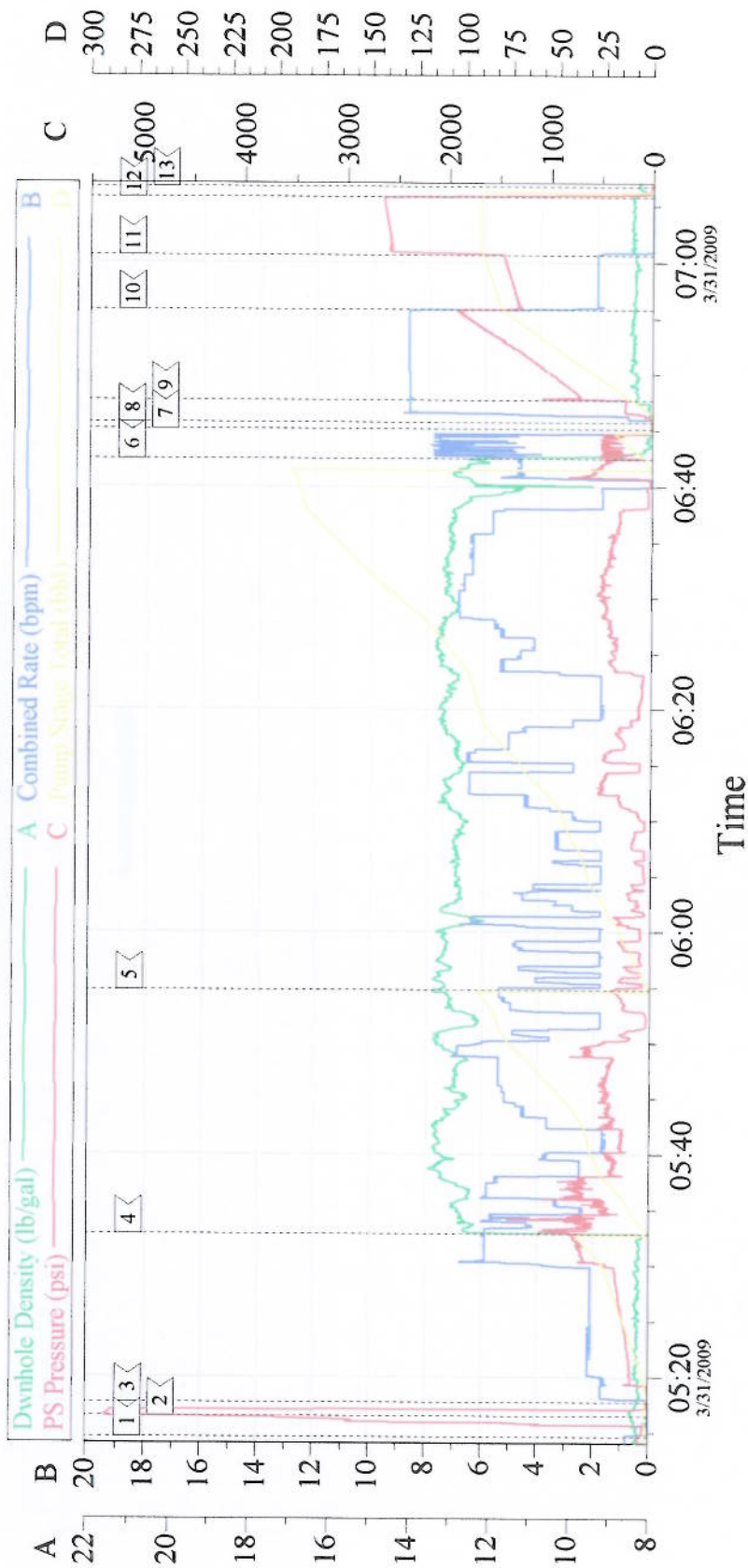
Activity Description	Date/Time	Cht #	Rate bbl/ min	Volume bbl		Pressure psig		Comments
				Stage	Total	Tubing	Casing	
Call Out	03/30/2009 21:15							
Pre-Convoy Safety Meeting	03/30/2009 23:00							
Arrive At Loc	03/31/2009 01:00							
Pre-Rig Up Safety Meeting	03/31/2009 01:30							
Rig-Up Equipment	03/31/2009 01:30							
Wait on Customer or Customer Sub-Contractor Equip	03/31/2009 02:30							HES rigged up then waited on rig to run the remainder of the casing.
Wait on Customer or Customer Sub-Contractor Equip	03/31/2009 04:30							
Pre-Job Safety Meeting	03/31/2009 05:00							
Start Job	03/31/2009 05:14	1						
Test Lines	03/31/2009 05:16	2					5000. 0	
Pump Spacer	03/31/2009 05:17	3	2	40			230.0	H2O spacer 20 bbls fresh water. 20 bbls fresh water with red dye and Poly-E-Flake
Pump Lead Cement	03/31/2009 05:32	4	5	87.5			760.0	305 sks @ 12.8 ppg 1.61 ft3/sk 7.31 gal/sk
Pump Tail Cement	03/31/2009 05:54	5	5	167.6			500.0	640 sks @ 13.2 sks 1.47 ft3/sk 6.32 gal/sk
Clean Lines	03/31/2009 06:42	6						
Drop Top Plug	03/31/2009 06:45	7						
Pump Displacement	03/31/2009 06:45	8	9				285.0	KCL water

Cementing Job Log

Activity Description	Date/Time	Cht #	Rate bbl/ min	Volume bbl		Pressure psig		Comments
				Stage	Total	Tubing	Casing	
Other	03/31/2009 06:47	9	9	12			1050. 0	Catch Cement
Slow Rate	03/31/2009 06:55	10	2	83			1350. 0	
Bump Plug	03/31/2009 07:00	11	2	93.4			2569. 0	Plug Down.
Check Floats	03/31/2009 07:05	12						Floats held. Good returns throughout entire job. Pipe was not reciprocated during job. We had a hard time mixing lead and tail cement. Water samples were fine. Cement was kept as close to design. Rate was decreased to keep density correct.
End Job	03/31/2009 07:06	13						Thanks for using Halliburton, Jay DeRosa and crew.
Post-Job Safety Meeting (Pre Rig-Down)	03/31/2009 07:15							
Rig-Down Equipment	03/31/2009 07:30							
Pre-Convoy Safety Meeting	03/31/2009 09:30							
Depart Location for Service Center or Other Site	03/31/2009 09:30							

Signature_____

4 1/2 LONGSTRING



Event Log			
1 Start Job	05:14:40	2 Test Lines	05:16:30
4 Pump Lead Cement	05:32:49	3 Pump H2O Spacer	05:17:45
7 Drop Top Plug	06:45:07	6 Clean Pumps and Lines	06:42:28
10 Slow Rate	06:55:48	9 Catch Cement	06:47:39
13 End Job	07:06:44	12 Check Floats	07:05:49

Customer: Chevron	Job Date: 3-31-09	Ticket #: 6585506
Well Description: 4.5 Longstring	CEMENTER: Jay DeRosa	ADC USED: YES
LEASE: SKR Well # 698-09-AV-09	Truck: Elite 4 Oper: Troy Angelstien	CO REP: Dan Meier

CemWin v1.7.2
31-Mar-09 07:40