

TO:	HUGHES, STEVEN
FROM:	TROUT, JONATHAN
REQUESTED ON LOCATION:	09-Jun-2009 04:30 MST
CUSTOMER:	CHEVRON - MID-CONTINENT EBIZ
WELL NAME/NBR/LEASE:	SKR , 697-09-AV-7 / SKR

**TABLE OF CONTENTS:**

Chart  
Job Summary  
Job Log  
Ticket

**MBU LEADER:** BE SURE THAT YOU HAVE RECEIVED EACH OF THE DOCUMENTS LISTED ABOVE. IF NOT, CONTACT CENTRAL DISPATCH IMMEDIATELY.

## The Road to Excellence Starts with Safety

Sold To #: 338668	Ship To #: 2713345	Quote #:	Sales Order #: 6711198
Customer: CHEVRON - MID-CONTINENT EBIZ		Customer Rep: Doherty, Ed	
Well Name: SKR		Well #: 697-09-AV-7	API/UWI #:
Field: SKINNER RIDGE	City (SAP): PARACHUTE	County/Parish: Garfield	State: Colorado
Contractor: H&P 318		Rig/Platform Name/Num: H&P 318	
Job Purpose: Cement Production Casing			
Well Type: Development Well		Job Type: Cement Production Casing	
Sales Person: HARTLEY, RICHARD		Srvc Supervisor: HUGHES, STEVEN	MBU ID Emp #: 300140

## Job Personnel

HES Emp Name	Exp Hrs	Emp #	HES Emp Name	Exp Hrs	Emp #	HES Emp Name	Exp Hrs	Emp #
BANKS, BRENT A	5	371353	BROST, ROBERT W	5	394382	HUGHES, STEVEN Shane	5	300140
STILLSON, ERIC W	5	393789	Mark Sullivan	5				

## Equipment

HES Unit #	Distance-1 way	HES Unit #	Distance-1 way	HES Unit #	Distance-1 way	HES Unit #	Distance-1 way
10624134	60 mile	10784064	60 mile	10872429	60 mile	10893932	60 mile
10897909	60 mile	10951251	60 mile				

## Job Hours

Date	On Location Hours	Operating Hours	Date	On Location Hours	Operating Hours	Date	On Location Hours	Operating Hours
6-9-09	9	2						

TOTAL

Total is the sum of each column separately

## Job

## Job Times

Formation Name	Formation Depth (MD)	Top	Bottom	Called Out	Date	Time	Time Zone
Form Type			BHST	On Location	09 - Jun - 2009	00:30	MST
Job depth MD	6661. ft		Job Depth TVD	6661. ft	Job Started	09 - Jun - 2009	07:30
Water Depth			Wk Ht Above Floor	3. ft	Job Completed	09 - Jun - 2009	09:02
Perforation Depth (MD)	From		To	Departed Loc			

## Well Data

Description	New / Used	Max pressure psig	Size in	ID in	Weight lbm/ft	Thread	Grade	Top MD ft	Bottom MD ft	Top TVD ft	Bottom TVD ft
7 7/8 Open Hole Section				7.875				995.	6650.		
4 1/2 Production	Unknown		4.5	4.	11.6				6650.		
8 5/8 Surface Casing	Unknown		8.625	8.097	24.				995.		

Sales/Rental/3<sup>rd</sup> Party (HES)

Description	Qty	Qty uom	Depth	Supplier
PLUG,CMTG,TOP,4 1/2,HWE,3.65 MIN/4.14 MA	1	EA		
PORT. DAS W/CEMWIN;ACQUIRE W/HES, ZI	1	JOB		
ADC (AUTO DENSITY CTRL) SYS, /JOB,ZI	1	JOB		

## Tools and Accessories

Type	Size	Qty	Make	Depth	Type	Size	Qty	Make	Depth	Type	Size	Qty	Make
Guide Shoe					Packer					Top Plug			
Float Shoe					Bridge Plug					Bottom Plug			
Float Collar					Retainer					SSR plug set			
Insert Float										Plug Container			
Stage Tool										Centralizers			



**HALLIBURTON****Cementing Job Summary**

Miscellaneous Materials													
Gelling Agt		Conc		Surfactant		Conc		Acid Type		Qty		Conc	%
Treatment Fld		Conc		Inhibitor		Conc		Sand Type		Size		Qty	
Fluid Data													
Stage/Plug #: 1													
Fluid #	Stage Type	Fluid Name			Qty	Qty uom	Mixing Density lbm/gal	Yield ft <sup>3</sup> /sk	Mix Fluid Gal/sk	Rate bbl/min	Total Mix Fluid Gal/sk		
1	Dyed Spacer					bbl	8.33	.0	.0	.0			
2	Lead Cement	VARICEM (TM) CEMENT (452009)				sacks	12.8	1.61	7.31		7.7		
		7.704 Gal											
		FRESH WATER											
3	Tail Cement	VARICEM (TM) CEMENT (452009)				sacks	13.2	1.47	6.32		6.72		
		6.719 Gal											
		FRESH WATER											
4	KCL Displacement					bbl	.	.0	.0	.0			
Calculated Values		Pressures			Volumes								
Displacement	102.8	Shut In: Instant				Lost Returns	no	Cement Slurry			Pad		
Top Of Cement	Surface	5 Min				Cement Returns	no	Actual Displacement		101	Treatment		
Frac Gradient		15 Min				Spacers		Load and Breakdown			Total Job		
Rates													
Circulating		Mixing	6	Displacement	6	Avg. Job		6					
Cement Left In Pipe	Amount	47.3 ft	Reason	Shoe Joint									
Frac Ring # 1 @	ID	Frac ring # 2 @	ID	Frac Ring # 3 @	ID	Frac Ring # 4 @	ID						
The Information Stated Herein Is Correct				Customer Representative Signature									

## The Road to Excellence Starts with Safety

The Road to Excellence Starts With Safety			
Sold To #: 338668	Ship To #: 2713345	Quote #:	Sales Order #: 6711198
Customer: CHEVRON - MID-CONTINENT EBIZ		Customer Rep: Doherty, Ed	
Well Name: SKR	Well #: 697-09-AV-7	API/UWI #:	
Field: SKINNER RIDGE	City (SAP): PARACHUTE	County/Parish: Garfield	State: Colorado
Legal Description:			
Lat: N 0 deg. OR N 0 deg. 0 min. 0 secs.		Long: E 0 deg. OR E 0 deg. 0 min. 0 secs.	
Contractor: H&P 318		Rig/Platform Name/Num: H&P 318	
Job Purpose: Cement Production Casing			Ticket Amount:
Well Type: Development Well		Job Type: Cement Production Casing	
Sales Person: HARTLEY, RICHARD		Srvc Supervisor: HUGHES, STEVEN	MBU ID Emp #: 300140

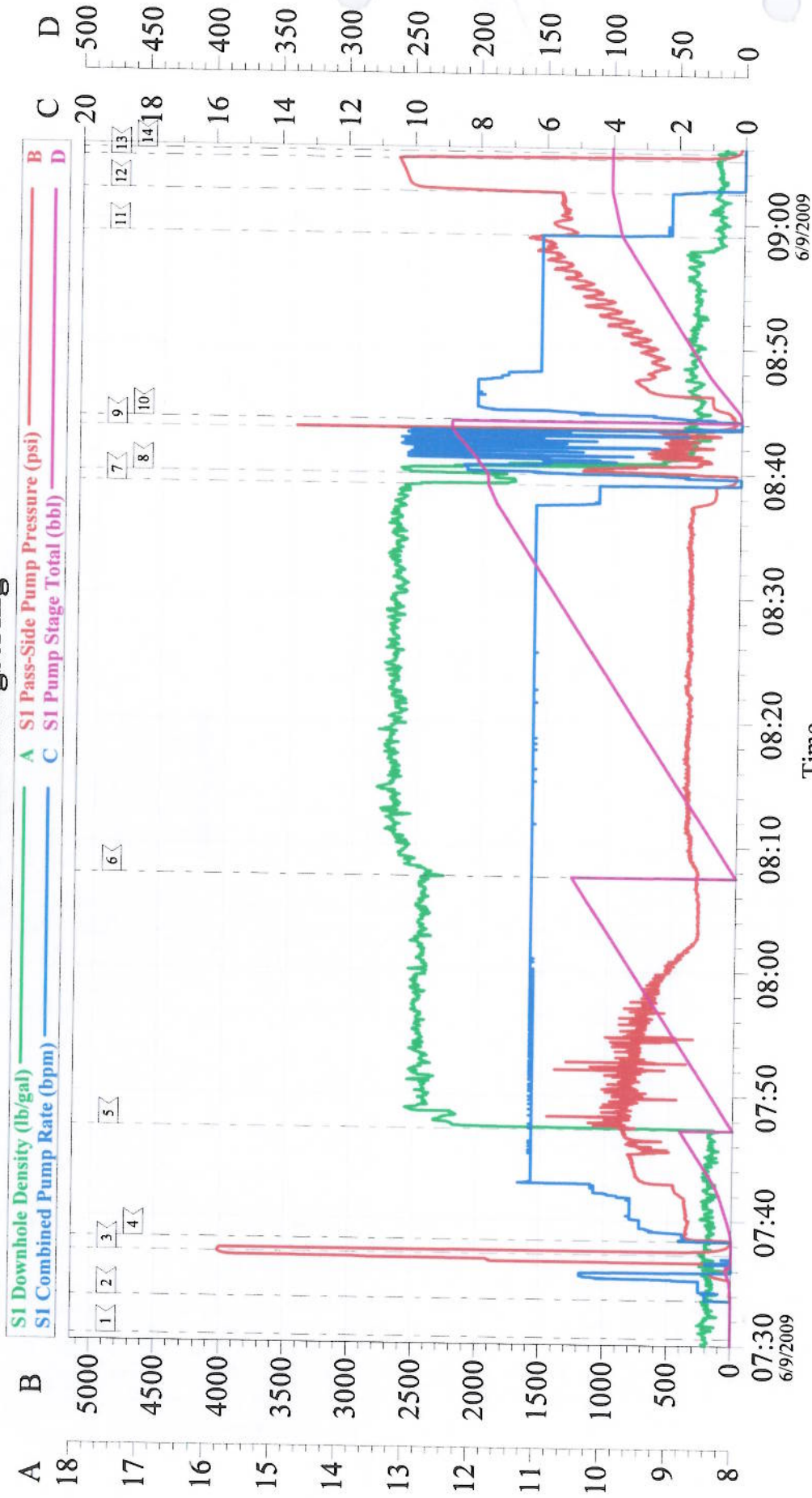
Activity Description	Date/Time	Cht #	Rate bbl/ min	Volume bbl		Pressure psig		Comments
				Stage	Total	Tubing	Casing	
Call Out	06/08/2009 22:30							
Pre-Convoy Safety Meeting	06/08/2009 23:30							
Arrive At Loc	06/09/2009 00:30							
Assessment Of Location Safety Meeting	06/09/2009 00:40							
Pre-Rig Up Safety Meeting	06/09/2009 00:50							
Rig-Up Equipment	06/09/2009 01:00							
Pre-Job Safety Meeting	06/09/2009 07:10							
Start Job	06/09/2009 07:30							
Pump Water	06/09/2009 07:33		2	2				Flood lines
Test Lines	06/09/2009 07:37						4000.0	Kick outs & pop offs working, Pressure holding
Pump Spacer	06/09/2009 07:38		6	20			680.0	Dye & Polyflake
Pump Spacer	06/09/2009 07:41		6	20			720.0	Water
Pump Lead Cement	06/09/2009 07:47		6	174.1			800.0	400 sks @ 12.8#, 1.61 yield, 7.31 water
Pump Tail Cement	06/09/2009 08:07		6	114.7			314.0	665 sks @ 13.2#, 1.47 yield, 6.32 water
Shutdown	06/09/2009 08:39							
Clean Lines	06/09/2009 08:39							
Drop Top Plug	06/09/2009 08:43							Plug away



*Cementing Job Log*

Activity Description	Date/Time	Cht #	Rate bbl/ min	Volume bbl		Pressure psig		Comments
				Stage	Total	Tubing	Casing	
Pump Displacement	06/09/2009 08:44		8				1660. 0	KCL water
Slow Rate	06/09/2009 08:59		2	<del>82</del>	92		1460. 0	Slowed @ 80 away per co man
Bump Plug	06/09/2009 09:02			<del>92.8</del>	101.2		2550. 0	Plug down
Check Floats	06/09/2009 09:05							Floats holding, 1 bbl back
End Job	06/09/2009 09:05							
Post-Job Safety Meeting (Pre Rig-Down)	06/09/2009 09:10							
Rig-Down Equipment	06/09/2009 09:20							
Pre-Convoy Safety Meeting	06/09/2009 11:00							
Crew Leave Location	06/09/2009 11:15							

# 4.5 Inch Longstring



Customer: CHEVRON - MID-CONTINENT EBIZ  
 Well Description: Skinner Ridge 698-09-AV-07  
 Company Rep: Ed Doherty

Job Date: 09-Jun-2009  
 Job Type: Production  
 Cement Supervisor: Shane Hughes

Sales Order #: 6711198  
 ADC Used: Yes  
 Elite #/Operator: 11, Chris Smith