
CHEVRON - MID-CONTINENT EBIZ

**SKR 698-04-AV-13
SKINNER RIDGE
Garfield County , Colorado**

Cement Production Casing

15-Dec-2008

Job Site Documents

The Road to Excellence Starts with Safety

Sold To #: 338668	Ship To #: 2695768	Quote #:	Sales Order #: 6377951
Customer: CHEVRON - MID-CONTINENT EBIZ	Customer Rep:		
Well Name: SKR	Well #: 698-04-AV-13	API/UWI #: 05-045-17216	
Field: SKINNER RIDGE	City (SAP): PARACHUTE	County/Parish: Garfield	State: Colorado
Lat: N 39.559 deg. OR N 39 deg. 33 min. 33.178 secs.	Long: W 108.338 deg. OR W -109 deg. 39 min. 41.782 secs.		
Contractor: H&P 318	Rig/Platform Name/Num: H&P 318		
Job Purpose: Cement Production Casing			
Well Type: Development Well	Job Type: Cement Production Casing		
Sales Person: HARTLEY, RICHARD	Srv Supervisor: DEROSA, JAY	MBU ID Emp #: 338788	

Job Personnel

HES Emp Name	Exp Hrs	Emp #	HES Emp Name	Exp Hrs	Emp #	HES Emp Name	Exp Hrs	Emp #
BETZ, KEITH A		442854	BIRCH, ZEB		416898	Breeze, Michael		459034
Collins, Josh		0	DEROSA, JAY M		338788	KING, KERRY Sherman		342363
Smith, Chris		452619	YOUNG, JEREMY R		418013			

Equipment

HES Unit #	Distance-1 way	HES Unit #	Distance-1 way	HES Unit #	Distance-1 way	HES Unit #	Distance-1 way

Job Hours

Date	On Location Hours	Operating Hours	Date	On Location Hours	Operating Hours	Date	On Location Hours	Operating Hours
12-15-08	10	1.5						
TOTAL	Total is the sum of each column separately							

Job

Job Times

Formation Name	Formation Depth (MD)	Top	Bottom	Form Type	Job depth MD	Water Depth	Perforation Depth (MD)	Date	Time	Time Zone
				BHST	7085. ft			14 - Dec - 2008	20:30	MST
								15 - Dec - 2008	02:00	MST
								15 - Dec - 2008	11:56	MST
								15 - Dec - 2008	13:20	MST
								15 - Dec - 2008	15:00	MST

Well Data

Description	New / Used	Max pressure psig	Size in	ID in	Weight lbm/ft	Thread	Grade	Top MD ft	Bottom MD ft	Top TVD ft	Bottom TVD ft

Sales/Rental/3rd Party (HES)

Description	Qty	Qty uom	Depth	Supplier
PLUG,CMTG,TOP,4 1/2,HWE,3.65 MIN/4.14 MA	1	EA		

Tools and Accessories

Type	Size	Qty	Make	Depth	Type	Size	Qty	Make	Depth	Type	Size	Qty	Make
Guide Shoe					Packer					Top Plug	4.5	1	
Float Shoe					Bridge Plug					Bottom Plug			
Float Collar					Retainer					SSR plug set			
Insert Float										Plug Container	4.5	1	
Stage Tool										Centralizers			

Miscellaneous Materials

Gelling Agt	Conc	Surfactant	Conc	Acid Type	Qty	Conc	%
Treatment Fld	Conc	Inhibitor	Conc	Sand Type	Size	Qty	

HALLIBURTON***Cementing Job Summary***

Fluid Data									
Stage/Plug #: 1									
Fluid #	Stage Type	Fluid Name	Qty	Qty uom	Mixing Density lbm/gal	Yield ft ³ /sk	Mix Fluid Gal/sk	Rate bbl/min	Total Mix Fluid Gal/sk
1	Spacer		40	bbl	8.33	.0	.0	.0	
2	Lead Cement	EXTENDACEM (TM) SYSTEM (452981)	335	sacks	12.8	1.55	7.15		7.67
		7.674 Gal FRESH WATER							
3	Tail Cement	EXTENDACEM (TM) SYSTEM (452981)	760	sacks	13.2	1.43	6.19		7.0
4	KCL Displacement		108.92	bbl	.	.0	.0	.0	
Calculated Values		Pressures		Volumes					
Displacement	108.92	Shut In: Instant		Lost Returns	no	Cement Slurry	291.2	Pad	
Top Of Cement	Surface	5 Min		Cement Returns	no	Actual Displacement	108.92	Treatment	
Frac Gradient		15 Min		Spacers	40bbls	Load and Breakdown		Total Job	
Rates									
Circulating	Rig	Mixing	8	Displacement	9	Avg. Job			
Cement Left In Pipe	Amount	47.5 ft	Reason	Shoe Joint					
Frac Ring # 1 @	ID	Frac ring # 2 @	ID	Frac Ring # 3 @	ID	Frac Ring # 4 @	ID		
The Information Stated Herein Is Correct				Customer Representative Signature					

The Road to Excellence Starts with Safety

Sold To #: 338668	Ship To #: 2695768	Quote #:	Sales Order #: 6377951
Customer: CHEVRON - MID-CONTINENT EBIZ		Customer Rep:	
Well Name: SKR	Well #: 698-04-AV-13	API/UWI #: 05-045-17216	
Field: SKINNER RIDGE	City (SAP): PARACHUTE	County/Parish: Garfield	State: Colorado
Legal Description:			
Lat: N 39.559 deg. OR N 39 deg. 33 min. 33.178 secs.		Long: W 108.338 deg. OR W -109 deg. 39 min. 41.782 secs.	
Contractor: H&P 318		Rig/Platform Name/Num: H&P 318	
Job Purpose: Cement Production Casing			Ticket Amount:
Well Type: Development Well		Job Type: Cement Production Casing	
Sales Person: HARTLEY, RICHARD		Srv Supervisor: DEROSA, JAY	MBU ID Emp #: 338788

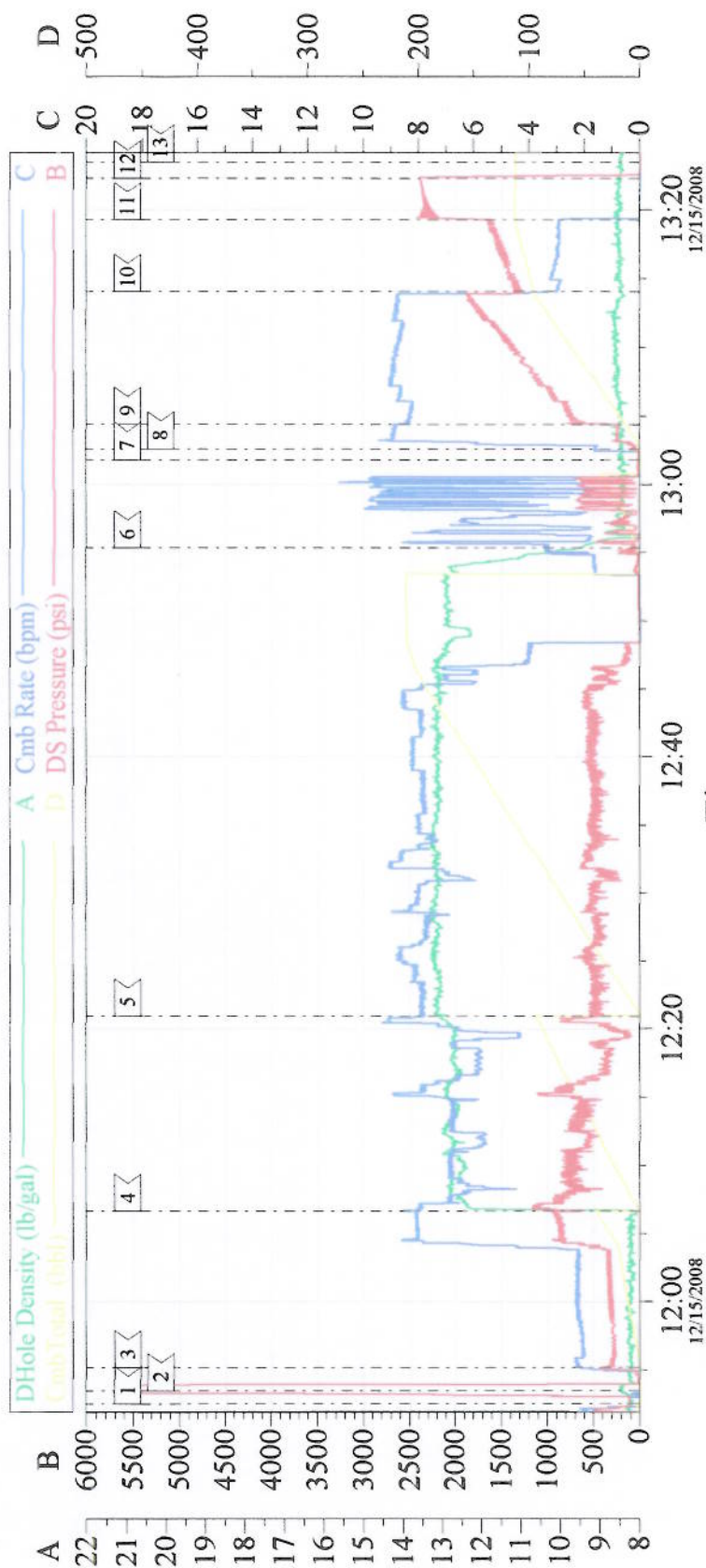
Activity Description	Date/Time	Cht #	Rate bbl/min	Volume bbl		Pressure psig		Comments
				Stage	Total	Tubing	Casing	
Call Out	12/14/2008 20:30							
Pre-Convoy Safety Meeting	12/15/2008 00:30							
Arrive At Loc	12/15/2008 02:00							Rig running remainder of casing.
Wait on Customer or Customer Sub-Contractor Equip	12/15/2008 02:00							
Wait on Customer or Customer Sub-Contractor Equipm	12/15/2008 10:00							
Pre-Rig Up Safety Meeting	12/15/2008 10:00							
Rig-Up Equipment	12/15/2008 10:00							
Pre-Job Safety Meeting	12/15/2008 11:30							
Start Job	12/15/2008 11:52	1						
Test Lines	12/15/2008 11:53	2					5500.0	
Pump Spacer	12/15/2008 11:55	3	2	40			400.0	H2O Spacer No Red Dye or Poly-E-Flake was used per Co Rep.
Pump Lead Cement	12/15/2008 12:06	4	8	92.5			800.0	335 sks @ 12.8 ppg 1.55 ft3/sk 7.15 gal/sk
Pump Tail Cement	12/15/2008 12:20	5	8	198.7			459.0	780 sks @ 13.2 pg 1.43 ft3/sk 6.19 gal/sk
Clean Lines	12/15/2008 12:55	6						
Drop Top Plug	12/15/2008 13:01	7						
Pump Displacement	12/15/2008 13:02	8	9				220.0	KCL Displacement

Cementing Job Log

Activity Description	Date/Time	Cht #	Rate bbl/ min	Volume bbl		Pressure psig		Comments
				Stage	Total	Tubing	Casing	
Other	12/15/2008 13:04	9	9	20			1100. 0	Catch Cement
Slow Rate	12/15/2008 13:14	10	3	95			1350. 0	
Bump Plug	12/15/2008 13:19	11	3	108.9 2			2235. 0	Plug Down
Check Floats	12/15/2008 13:22	12						Floats Held. Good returns throughout entire job. Pipe was not reciprocated during job. 20 bbls of spacer to surface.
End Job	12/15/2008 13:23	13						Pump Truck Hydraulic lines broke during the job. Pump Truck was able to finish the job successfully.
Post-Job Safety Meeting (Pre Rig-Down)	12/15/2008 13:48							
Rig-Down Equipment	12/15/2008 13:48							
Pre-Convoy Safety Meeting	12/15/2008 13:48							
Depart Location for Service Center or Other Site	12/15/2008 13:48							

Signature _____

4 1/2" PRODUCTION



Event Log

1	START JOB	11:52:31	2	TEST LINES	11:53:30	3	PUMP H2O SPACER	11:55:10
4	PUMP LEAD CEMENT	12:06:38	5	PUMP TAIL CEMENT	12:20:57	6	CLEAN LINES	12:55:20
7	DROP TOP PLUG	13:01:48	8	PUMP DISPLACEMENT	13:02:35	9	CATCH CEMENT	13:04:21
10	SLOW RATE	13:14:03	11	BUMP PLUG	13:19:15	12	CHECK FLOATS	13:22:17
13	END JOB	13:23:28						

Customer:	CHEVRON	Job Date:	12-15-08	Ticket #:	6377951
	OPERATOR JEREMY YOUNG		CEMENTER JAY DEROSA		ADC YES/NO NO
	PUMP TRUCK TC-4 #2		WELL/ LEASE SKR 698-04-AV-13		CO REP: DAN MEIER

TG Version G3.4.1
15-Dec-08 14:19