

---

# **CHEVRON - MID-CONTINENT EBIZ**

---

**SKR 698-04-AV-13  
SKINNER RIDGE  
Garfield County , Colorado**

**Cement Surface Casing**  
**04-Dec-2008**

**Job Site Documents**

## The Road to Excellence Starts with Safety

Sold To #: 338668	Ship To #: 2695768	Quote #:	Sales Order #: 6361583
Customer: CHEVRON - MID-CONTINENT EBIZ	Customer Rep: MEIER, DAN		
Well Name: SKR	Well #: 698-04-AV-13	API/UWI #:	
Field: SKINNER RIDGE	City (SAP): PARACHUTE	County/Parish: Garfield	State: Colorado
Contractor: H&P 318	Rig/Platform Name/Num: H&P 318		
Job Purpose: Cement Surface Casing			
Well Type: Development Well	Job Type: Cement Surface Casing		
Sales Person: HARTLEY, RICHARD	Srvc Supervisor: WYLEY, KEVIN	MBU ID Emp #: 339437	

## Job Personnel

HES Emp Name	Exp Hrs	Emp #	HES Emp Name	Exp Hrs	Emp #	HES Emp Name	Exp Hrs	Emp #
ARNOLD, EDWARD John	4	439784	HANSEN, TED Lance	4	396847	HOEFER, FREEMAN Dennis	4	369666
WYLEY, KEVIN Todd	4	339437						

## Equipment

HES Unit #	Distance-1 way	HES Unit #	Distance-1 way	HES Unit #	Distance-1 way	HES Unit #	Distance-1 way
10038849C	120 mile	10804487	120 mile	10829461	120 mile	10867304	120 mile
10998054	120 mile	6334	120 mile				

## Job Hours

Date	On Location Hours	Operating Hours	Date	On Location Hours	Operating Hours	Date	On Location Hours	Operating Hours
12/4/08	2	1						
TOTAL								

Total is the sum of each column separately

## Job

Formation Name	Formation Depth (MD)	Top	Bottom	Form Type	Job depth MD	Water Depth	Perforation Depth (MD)	From	To
				BHST	1339.5 ft				
					Job Depth TVD	Wk Ht Above Floor			
					1339.5 ft	4. ft			

## Job Times

Date	Time	Time Zone
04 - Dec - 2008	05:45	MST
04 - Dec - 2008	11:00	MST
04 - Dec - 2008	11:55	MST
04 - Dec - 2008	12:59	MST
04 - Dec - 2008	15:00	MST

## Well Data

Description	New / Used	Max pressure psig	Size in	ID in	Weight lbm/ft	Thread	Grade	Top MD ft	Bottom MD ft	Top TVD ft	Bottom TVD ft
12 1/4 Open Hole Section				12.25					1350.		
8 5/8 Surface Casing	Unknown		8.625	7.921	32.				1340.		

Sales/Rental/3<sup>rd</sup> Party (HES)

Description	Qty	Qty uom	Depth	Supplier
ADC (AUTO DENSITY CTRL) SYS, /JOB,ZI	1	JOB		
PORT. DAS W/CEMWIN;ACQUIRE W/HES, ZI	1	JOB		
PLUG,CMTG,TOP,8 5/8,HWE,7.20 MIN/8.09 MA	1	EA		

## Tools and Accessories

Type	Size	Qty	Make	Depth	Type	Size	Qty	Make	Depth	Type	Size	Qty	Make
Guide Shoe					Packer					Top Plug	8 5/8	1	
Float Shoe					Bridge Plug					Bottom Plug			
Float Collar					Retainer					SSR plug set			
Insert Float										Plug Container	8 5/8	1	
Stage Tool										Centralizers			

## Miscellaneous Materials

Gelling Agt	Conc	Surfactant	Conc	Acid Type	Qty	Conc	%
Treatment Fld	Conc	Inhibitor	Conc	Sand Type	Size	Qty	



Fluid Data										
Stage/Plug #: 1										
Fluid #	Stage Type	Fluid Name	Qty	Qty uom	Mixing Density lbm/gal	Yield ft <sup>3</sup> /sk	Mix Fluid Gal/sk	Rate bbl/min	Total Mix Fluid Gal/sk	
1	DYE SPACER AND POLYFLAKE		50	bbl	.	.0	.0	6		
2	Lead Cement	VERSACEM (TM) SYSTEM (452010)	245	sacks	12.3	2.38	13.75	6		
	2 %	CAL-SEAL 60, 50 LB BAG (101217146)								
	2 %	ECONOLITE (100001580)								
	0.3 %	VERSASET, 55 LB SK (101376573)								
	5.64 lbm	SALT, 100 LB BAG (100003652)								
	0.125 lbm	POLY-E-FLAKE (101216940)								
	0.25 %	D-AIR 3000 (101007446)								
	13.75 Gal	FRESH WATER								
3	Tail Cement	VERSACEM (TM) SYSTEM (452010)	160	sacks	12.8	2.11	11.75	6		
	2 %	CAL-SEAL 60, 50 LB BAG (101217146)								
	2 %	ECONOLITE (100001580)								
	0.3 %	VERSASET, 55 LB SK (101376573)								
	5.64 lbm	SALT, 100 LB BAG (100003652)								
	11.75 Gal	FRESH WATER								
4	DISPLACEMENT		82.4	bbl	.	.0	.0	7		
Calculated Values		Pressures		Volumes						
Displacement	82.4	Shut In: Instant		Lost Returns	NO	Cement Slurry	164	Pad		
Top Of Cement		5 Min		Cement Returns	50	Actual Displacement	82.4	Treatment		
Frac Gradient		15 Min		Spacers	50	Load and Breakdown		Total Job		
Rates										
Circulating	RIG	Mixing	6	Displacement	7	Avg. Job	6.5			
Cement Left In Pipe	Amount	44.5 ft	Reason	Shoe Joint						
Frac Ring # 1 @	ID	Frac ring # 2 @	ID	Frac Ring # 3 @	ID	Frac Ring # 4 @	ID			
The Information Stated Herein Is Correct				Customer Representative Signature						

*The Road to Excellence Starts with Safety*

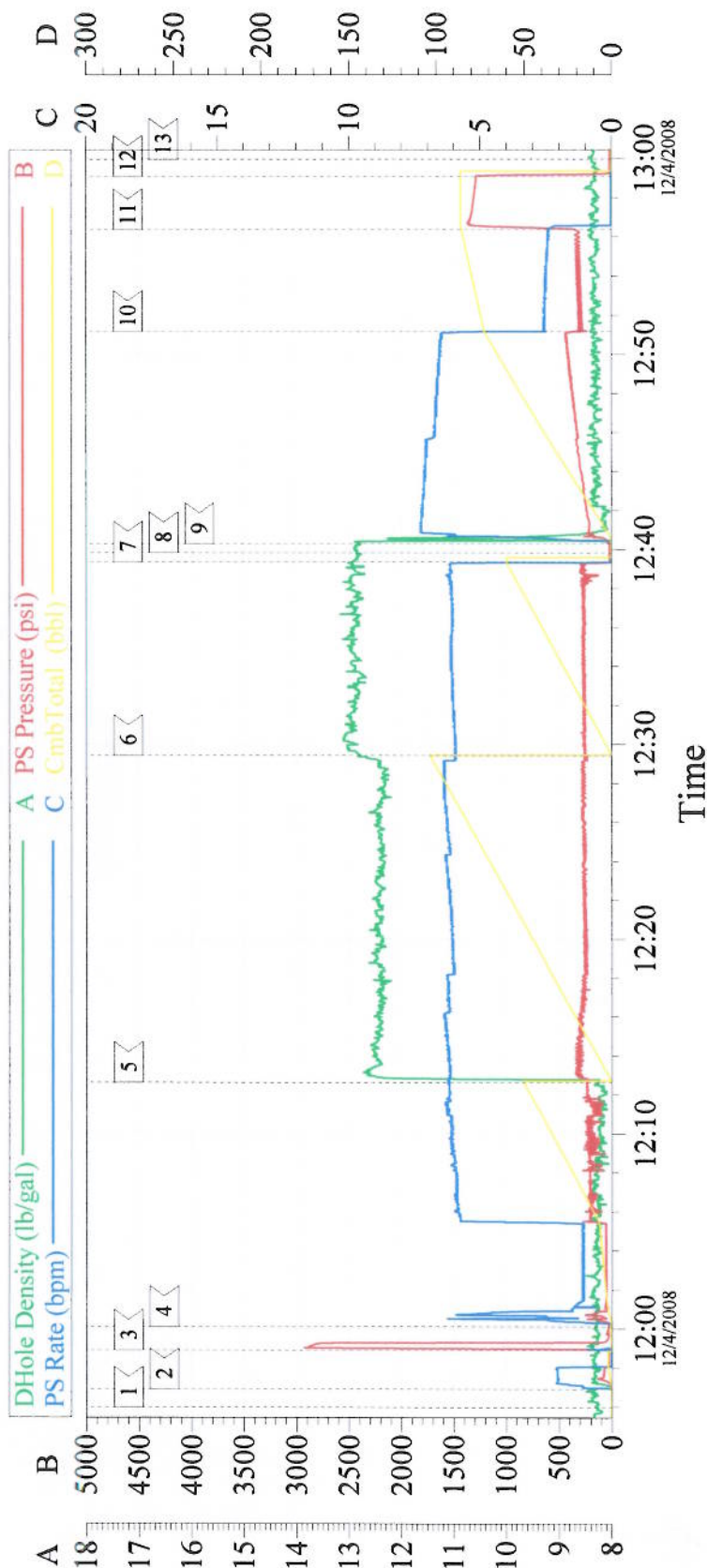
Sold To #: 338668	Ship To #: 2695768	Quote #:	Sales Order #: 6361583
Customer: CHEVRON - MID-CONTINENT EBIZ	Customer Rep: MEIER, DAN		
Well Name: SKR	Well #: 698-04-AV-13	API/UWI #:	
Field: SKINNER RIDGE	City (SAP): PARACHUTE	County/Parish: Garfield	State: Colorado
Legal Description:			
Lat:		Long:	
Contractor: H&P 318	Rig/Platform Name/Num: H&P 318		
Job Purpose: Cement Surface Casing	Ticket Amount:		
Well Type: Development Well	Job Type: Cement Surface Casing		
Sales Person: HARTLEY, RICHARD	Srv Supervisor: WYLEY, KEVIN	MBU ID Emp #: 339437	

Activity Description	Date/Time	Cht #	Rate bbl/min	Volume bbl		Pressure psig		Comments
				Stage	Total	Tubing	Casing	
Call Out	12/04/2008 05:45							
Depart Yard Safety Meeting	12/04/2008 08:00							SAFETY MEETING INVOLVING THE ENTIRE CMT CREW
Arrive At Loc	12/04/2008 11:00							STILL RUNNING CASING
Assessment Of Location Safety Meeting	12/04/2008 11:15							ASSESSMENT OF THE LOCATION INVOLVING THE ENTIRE CMT CREW
Rig-Up Equipment	12/04/2008 11:25							
Circulate Well	12/04/2008 11:30							RIG CIRCULATED FOR ABOUT 30 MIN BEFORE CEMENT JOB
Pre-Job Safety Meeting	12/04/2008 11:35							SAFETY MEETING INVOLVING EVERYONE ON LOCATION
Start Job	12/04/2008 11:55							TD 1350', TP 1339.48', SJ 44.5', 12 1/4" OH, 8 5/8" 24# J-55 CSG, 9 MW
Other	12/04/2008 11:56		2	2			125.0	PRIME LINES WITH FRESH WATER
Test Lines	12/04/2008 11:58						2880.0	PSI TEST GOOD
Pump Spacer	12/04/2008 12:00		6	50			210.0	FRESH WATER SPACER W/ THE LAST 20 BBLS HAD POL-E-FLAKE, NO DYE PER CO. REP.
Pump Lead Cement	12/04/2008 12:12		6	103.9			280.0	245 SKS, 12.3 PPG, 2.38 FT3/SK, 13.75 GAL/SK



Activity Description	Date/Time	Cht #	Rate bbl/min	Volume bbl		Pressure psig		Comments
				Stage	Total	Tubing	Casing	
Pump Tail Cement	12/04/2008 12:29		6	60.1			260.0	160 SKS, 12.8 PPG, 2.11 FT3/SK, 11.75 GAL/SK
Shutdown	12/04/2008 12:39							DROP TOP PLUG
Drop Top Plug	12/04/2008 12:39							PLUG LEFT THE CONTAINER
Pump Displacement	12/04/2008 12:40		7	82.4			424.0	FRESH WATER DISPLACEMENT
Slow Rate	12/04/2008 12:51		2	70			330.0	SLOW RATE THE LAST 10 BBL OF DISPLACEMENT TO LAND THE PLUG
Bump Plug	12/04/2008 12:56		2	82.4			1340.0	PLUG LANDED
Check Floats	12/04/2008 12:59							FLOATS HELD
End Job	12/04/2008 12:59							GOOD CIRCULATION THROUGHOUT THE ENTIRE JOB, 50 BBL OF CEMENT TO THE PIT, NO PIPE MOVEMENT DURING THE JOB, USED 100 LBS OF SUGAR
Pre-Rig Down Safety Meeting	12/04/2008 13:15							SAFETY MEETING INVOLVING THE ENTIRE CMT CREW
Rig-Down Equipment	12/04/2008 13:30							
Safety Meeting - Departing Location	12/04/2008 15:00							SAFETY MEETING INVOLVING THE ENTIRE CMT CREW
Comment	12/04/2008 15:01							THANK YOU FOR USING HALLIBURTON

# 8 5/8 SURFACE



Customer: CHEVRON  
 Well Desc: SKR 698-04-AV-13  
 ADC USED YES

Job Date: 12/4/08  
 CO. REP. DAN MEIER  
 TRUCK # CMT 400 #1

Ticket #: 6361583  
 SUPERVISOR KEVIN WYLEY  
 OPERATOR EDWARD ARNOLD



The Road to Excellence Starts with Safety						
Sold To #: 338668		Ship To #: 2695768		Primary Sales Order #: 6361583		
Customer: CHEVRON - MID-CONTINENT EBIZ			Job Purpose: Cement Surface Casing			
Well Name: SKR			Well #: 698-04-AV-13		API/UWI #:	
Field: SKINNER RIDGE		City: PARACHUTE		County/Parish: Garfield		State/Prov: Colorado
Customer Rep: Doherty, Ed Office:283-1106						
Ordered By: Doherty, Ed Office:283-1106						
Contractor: H&P 318;						
Rig/Platform Name/Num: H&P 318					Location: Land	
Sales Person: HARTLEY, RICHARD				Status: Pending/Will-Call		
PPE, Safety Huddles, JSA's, HOC & Near Miss Reporting, BBP Observations						
Distance/Mileage(1 way) Srvc's:		120.0 miles		Distance/Mileage(1 way) Mtls:		120.0 miles
Call Taken By:		JONATHAN TROUT		Call Taken Date/Time:		
HSE Information						
H2S Present:		Unknown		CO2 Present:		Unknown
Drive Safely. Lights On for Safety. Wear Seat Belts. Observe all HES / Customer Safety Policies.						
Directions: I-70 to Debeque, Turn North on Roan Creek rd and proceed 12.8 miles to Clear Creek Road. Look for Chevron sign and Cowboy Chapel. Turn North on Clear Creek road and travel 4.6 miles to Hiner Gate. Stop and Sign in. and ask Guard for Directions, Should be able to see rig from Guard Shack.						
Remarks						
General:						
Materials: TAKE DYE AND 10 LBS POLYFLAKE,Take Spill containment kit						
HSE Information:						
Job Procedures						
PUMP 20 BBLs DYED AND POLYFLAKE SPACER, PUMP LEAD CEMENT, PUMP TAIL CEMENT, SHUT DOWN DROP TOP PLUG, PUMP DISPLACEMENT, SLOW RATE LAST TEN BBLs TO BUMP PLUG						
Pumping Equipment (Generic)						
Description	Qty	Comments	Description	Qty	Comments	
RCM PUMP TRUCK	1		BULK TRUCKS	1		
PICK UP TRUCK	1		STEADY FLO TANK	1		
Surface Equipment (Generic)						
Description	Qty	Comments	Description	Qty	Comments	
PLUG CONTAINER	1		QUICK-LATCH ATTACHMENT	1		
SWAGE	1		IRON BASKET	1		
SPILL CONTAINMENT KIT	1					
Job Info / Well Data						
Job Depth (MD) ft	Job Depth (TVD) ft	Max Pressure psig	Well Fluid Type	Well Fluid Weight lbm/gal	Displacement Fluid	Displ Fluid Weight lbm/gal
1325.0	1325.0		Water Based Mud			



Job Tubulars/Tools											
Description	Size in	Weight lbm/ft	ID in	Thread	Grade	Top MD ft	Btm MD ft	Top TVD ft	Btm TVD ft	Shoe Jnt ft	% Excess
12 1/4 Open Hole Section			12.25			0.0	1,325.0				
8 5/8 Surface Casing	8.625	32.	7.921			0.0	1,325.0				
Tie on Connection											
Size: 8 5/8 in		Thread: 8 RD			Type: Casing			Cross Over Required: No			
Materials											
Stage/Plug #: 1											
Fluid #	Fluid Name	Package/SBM/Material Name	Rqstd Del Qty	UOM	Density lbm/gal	Yield ft3/sk	Mix Fluid Gal/sk	Rate bbl/min	Fluid+Liq AddGal/sk		
1	DYE SPACER AND POLYFLAKE		20.00	bbl							
2	Lead Cement	VERSACEM (TM) SYSTEM (452010)	245	sacks	12.3	2.38	13.75				
	2 %	CAL-SEAL 60, 50 LB BAG (101217146) Pre-Mix Dry									
	2 %	ECONOLITE (100001580) Pre-Mix Dry									
	0.3 %	VERSASET, 55 LB SK (101376573) Pre-Mix Dry									
	5.64 lbm	SALT, 100 LB BAG (100003652) Pre-Mix Dry									
	0.125 lbm	POLY-E-FLAKE (101216940) Pre-Mix Dry									
	0.25 %	D-AIR 3000 (101007446) Pre-Mix Dry									
	13.75 Gal	FRESH WATER Mix-On-Fly to Slurry									
Fluid #	Fluid Name	Package/SBM/Material Name	Rqstd Del Qty	UOM	Density lbm/gal	Yield ft3/sk	Mix Fluid Gal/sk	Rate bbl/min	Fluid+Liq AddGal/sk		
3	Tail Cement	VERSACEM (TM) SYSTEM (452010)	160	sacks	12.8	2.11	11.75				
	2 %	CAL-SEAL 60, 50 LB BAG (101217146) Pre-Mix Dry									
	2 %	ECONOLITE (100001580) Pre-Mix Dry									
	0.3 %	VERSASET, 55 LB SK (101376573) Pre-Mix Dry									
	5.64 lbm	SALT, 100 LB BAG (100003652) Pre-Mix Dry									
	???	FRESH WATER Mix-On-Fly to Slurry									
Fluid #	Fluid Name	Package/SBM/Material Name	Rqstd Del Qty	UOM	Density lbm/gal	Yield ft3/sk	Mix Fluid Gal/sk	Rate bbl/min	Fluid+Liq AddGal/sk		
4	DISPLACEMENT		0.00	bbl							
Caution: Displacement quantities and densities are estimates ONLY! Do not use them for the actual job.											
Packaged Materials											
SAP #	Material	Qty	UOM	Comments							
	Fresh Water	3368.75	Gal								
Sales/Rental/3 <sup>rd</sup> Party											
SAP #	Description	Qty	Qty uom	Supplier	Comments/ Tech ID #						
101227839	PLUG,CMTG,TOP,8 5/8,HWE,7.20 MIN/8.09 MA	1	EA								
139	ADC (AUTO DENSITY CTRL) SYS, /JOB,ZI	1	JOB								
132	PORT. DAS W/CEMWIN;ACQUIRE W/HES, ZI	1	JOB								