

---

# **CHEVRON - MID-CONTINENT EBIZ**

---

**SKR 698-04-AV-11  
SKINNER RIDGE  
Garfield County , Colorado**

## **Cement Production Casing** **24-Feb-2009**

### **Job Site Documents**

## The Road to Excellence Starts with Safety

Sold To #: 338668	Ship To #: 2695766	Quote #:	Sales Order #: 6514492
Customer: CHEVRON - MID-CONTINENT EBIZ	Customer Rep: Morgan, Randy		
Well Name: SKR	Well #: 698-04-AV-11	API/UWI #:	
Field: SKINNER RIDGE	City (SAP): PARACHUTE	County/Parish: Garfield	State: Colorado
Contractor: H&P 318	Rig/Platform Name/Num: H&P318		
Job Purpose: Cement Production Casing			
Well Type: Development Well	Job Type: Cement Production Casing		
Sales Person: DUNNING, DUSTIN	Srv Supervisor: ANDREWS, ANTHONY	MBU ID Emp #: 321604	

## Job Personnel

HES Emp Name	Exp Hrs	Emp #	HES Emp Name	Exp Hrs	Emp #	HES Emp Name	Exp Hrs	Emp #
ANDREWS, ANTHONY Michael		321604	ANGLESTEIN, TROY Edward WM		436099	MAYO, MARK Eaton		314204
ROCKERT, CHRISTOPHER Michael		332914	SMITH, DUSTIN Michael		418015	WHITE, GENE L		445480
WYMS, JUAN P		456693						

## Equipment

HES Unit #	Distance-1 way	HES Unit #	Distance-1 way	HES Unit #	Distance-1 way	HES Unit #	Distance-1 way

## Job Hours

Date	On Location Hours	Operating Hours	Date	On Location Hours	Operating Hours	Date	On Location Hours	Operating Hours
2/24/09	7	5						
TOTAL			Total is the sum of each column separately					

## Job

Formation Name	Formation Depth (MD)	Top	Bottom	Form Type	Job depth MD	Job Depth TVD	Water Depth	Perforation Depth (MD)	From	To
				BHST	6960. ft	6960. ft				
						4. ft				

## Job Times

Date	Time	Time Zone
24 - Feb - 2009	00:30	MST
24 - Feb - 2009	04:30	MST
24 - Feb - 2009	09:04	MST
24 - Feb - 2009	10:37	MST
24 - Feb - 2009	13:00	MST

## Well Data

Description	New / Used	Max pressure Psig	Size in	ID in	Weight lbm/ft	Thread	Grade	Top MD ft	Bottom MD ft	Top TVD ft	Bottom TVD ft
8 3/4 Open Hole Section				8.75				1320.	6960.		
4 1/2 Production Casing	Unknown		4.5	4.	11.6				6960.		
8 5/8 Surface Casing	Unknown		8.625	8.097	24.				1320.		

Sales/Rental/3<sup>rd</sup> Party (HES)

Description	Qty	Qty uom	Depth	Supplier
PLUG, CMTG, TOP, 4 1/2, H&P, 3.65 MIN/4.14 MA	1	EA		
PORT. DAS W/CEMWIN, ACQUIRE W/HES, ZI	1	JOB		
ADC (AUTO DENSITY CTRL) SYS, /JOB, ZI	1	JOB		

Tools and Accessories													
Type	Size	Qty	Make	Depth	Type	Size	Qty	Make	Depth	Type	Size	Qty	Make
Guide Shoe					Packer					Top Plug			
Float Shoe					Bridge Plug					Bottom Plug			
Float Collar					Retainer					SSR plug set			
Insert Float										Plug Container			
Stage Tool										Centralizers			
Miscellaneous Materials													
Gelling Agt			Conc		Surfactant			Conc		Acid Type		Qty	Conc %
Treatment Fld			Conc		Inhibitor			Conc		Sand Type		Size	Qty
Fluid Data													
Stage/Plug #: 1													
Fluid #	Stage Type	Fluid Name			Qty	Qty uom	Mixing Density lbm/gal	Yield ft <sup>3</sup> /sk	Mix Fluid Gal/sk	Rate bbl/min	Total Mix Fluid Gal/sk		
1	Dyed Polyflake Spacer				50	bbl	8.33	.0	.0	.0			
2	Lead Cement	VARICEM (TM) CEMENT (452009)			90	sacks	12.8	1.6	7.31		7.31		
	7.704 Gal	FRESH WATER											
3	Tail Cement	VARICEM (TM) CEMENT (452009)			188.5	sacks	13.2	1.47	6.32		6.32		
	6.719 Gal	FRESH WATER											
4	KCL DISPLACEMENT				107.3	bbl	8.4	.0	.0	.0			
Calculated Values		Pressures		Volumes									
Displacement	107.3	Shut In: Instant		Lost Returns		N	Cement Slurry		278.5	Pad			
Top Of Cement	320	5 Min		Cement Returns		N	Actual Displacement		107.3	Treatment			
Frac Gradient		15 Min		Spacers		50	Load and Breakdown			Total Job		435.8	
Rates													
Circulating	RIG	Mixing		7		Displacement		8-2		Avg. Job		8	
Cement Left In Pipe		Amount 45 ft		Reason		Shoe Joint							
Frac Ring # 1 @	ID	Frac ring # 2 @		ID	Frac Ring # 3 @		ID	Frac Ring # 4 @		ID			
The Information Stated Herein Is Correct						Customer Representative Signature							



*The Road to Excellence Starts with Safety*

Sold To #: 338668		Ship To #: 2695766		Quote #:		Sales Order #: 6514492	
Customer: CHEVRON - MID-CONTINENT EBIZ				Customer Rep: Morgan, Randy			
Well Name: SKR			Well #: 698-04-AV-11		API/UWI #:		
Field: SKINNER RIDGE		City (SAP): PARACHUTE		County/Parish: Garfield		State: Colorado	
Legal Description:							
Lat: N 0 deg. OR N 0 deg. 0 min. 0 secs.				Long: E 0 deg. OR E 0 deg. 0 min. 0 secs.			
Contractor: H&P 318			Rig/Platform Name/Num: H&P318				
Job Purpose: Cement Production Casing						Ticket Amount:	
Well Type: Development Well			Job Type: Cement Production Casing				
Sales Person: DUNNING, DUSTIN			Srvc Supervisor: ANDREWS, ANTHONY			MBU ID Emp #: 321604	

Activity Description	Date/Time	Cht #	Rate bbl/min	Volume bbl		Pressure psig		Comments
				Stage	Total	Tubing	Casing	
Call Out	02/24/2009 00:30							
Pre-Convoy Safety Meeting	02/24/2009 01:55							
Crew Leave Yard	02/24/2009 02:00							
Arrive At Loc	02/24/2009 04:30							
Assessment Of Location Safety Meeting	02/24/2009 04:35							
Other	02/24/2009 04:40							SPOT EQUIPMENT
Pre-Rig Up Safety Meeting	02/24/2009 04:55							
Rig-Up Equipment	02/24/2009 05:00							
Pre-Job Safety Meeting	02/24/2009 08:30							
Start Job	02/24/2009 09:04							TD: 6990 TP: 6963 SJ: 45 MW: 10.6PPG
Test Lines	02/24/2009 09:04							4000 PSI TEST.
Pump Spacer	02/24/2009 09:07		4	50			475.0	30 FRESH 20 W/ DYE AND POLY
Pump Lead Cement	02/24/2009 09:21		7	90			913.0	315 SKS @ 12.8 PPG 1.6YLD
Pump Tail Cement	02/24/2009 09:35		7	188.5			651.0	720 SKS @ 13.2 PPG 1.47 YLD
Shutdown	02/24/2009 10:05							
Clean Lines	02/24/2009 10:07							
Drop Plug	02/24/2009 10:15							

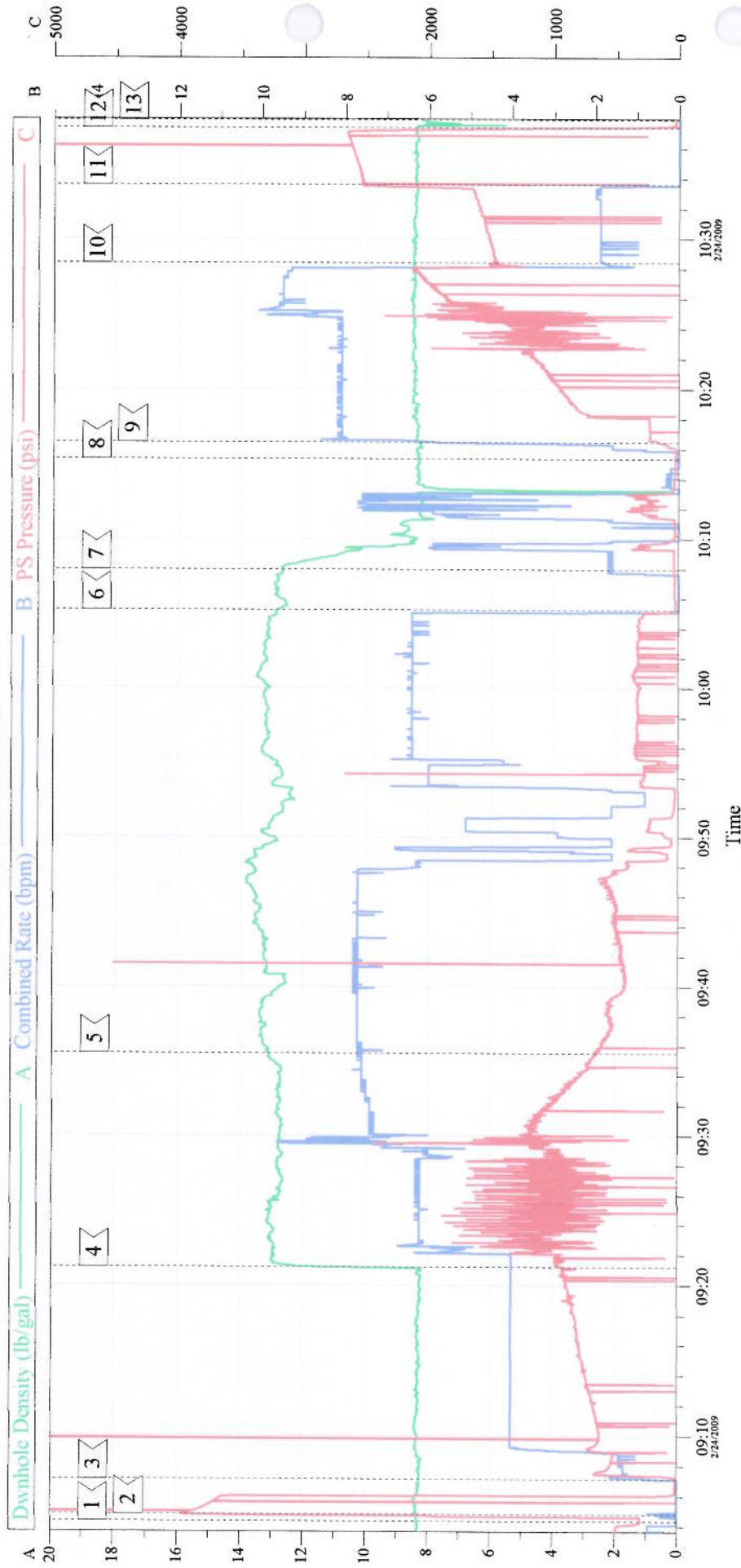
## Cementing Job Log

Activity Description	Date/Time	Cht #	Rate bbl/ min	Volume bbl		Pressure psig		Comments
				Stage	Total	Tubing	Casing	
Pump Displacement	02/24/2009 10:16		8		107.3		157.0	
Slow Rate	02/24/2009 10:28		2	95			1450. 0	
Bump Plug	02/24/2009 10:33		2	107.3			2522. 0	
Check Floats	02/24/2009 10:37							
End Job	02/24/2009 10:37							GOOD CIRCULATION THROUGHOUT JOB. PIPE WAS LEFT STATIC THROUGHOUT JOB. PLUG BUMPED AT CALCULATED DISPLACEMENT. 1 ADD HOUR CHARGED.
Post-Job Safety Meeting (Pre Rig-Down)	02/24/2009 10:45							VOLUME LINE ON CHART WAS MESSING UP SO THERE IS NO VOLUME LINE TO SHOW.
Rig-Down Equipment	02/24/2009 11:00							
Pre-Convoy Safety Meeting	02/24/2009 12:55							
Crew Leave Location	02/24/2009 13:00							THANK YOU FOR CHOOSING HALLIBURTON CEMENTING OF GRAND JUNCTION, COLORADO ANTHONY ANDREWS AND CREW



# Chevron

## 4.5" Production



Intersection		Event Log		Intersection		PP	
1	START JOB	09:04:22	293.0	2	TEST LINES	09:04:47	3960
4	LEAD CEMENT	09:21:12	913.8	5	TAIL CEMENT	09:35:31	651.1
7	CLEAN LINES	10:07:57	41.00	8	DROP PLUG	10:15:21	29.00
10	SLOW RATE	10:28:24	1450	11	BUMP PLUG	10:33:37	2522
13	END JOB	10:37:55	33.00	12	CHECK FLOATS	10:37:25	645.7
				3	WATER SPACER	09:07:07	11.00
				6	SHUTDOWN	10:05:15	26.16
				9	PUMP DISPLACEMENT	10:16:27	157.4

Customer: Chevron	Job Date: 2/24/09	Ticket #: 6514492
Lease: Skinner Ridge	Supervisor: Anthony Andrews	ADC Used: Yes
Well #: 698-04-AV-11	Pump Truck: Elite # 8	Company Rep: Randy Morgan