

---

# **CHEVRON - MID-CONTINENT EBIZ**

---

**SKR 698-04-AV-9  
SKINNER RIDGE  
Garfield County , Colorado**

**Cement Surface Casing**  
**03-Dec-2008**

**Job Site Documents**

## Cementing Job Summary

<b>Sold To #:</b> 338668		<b>Ship To #:</b> 2695763		<b>Quote #:</b>		<b>Sales Order #:</b> 6359551	
<b>Customer:</b> CHEVRON - MID-CONTINENT EBIZ				<b>Customer Rep:</b> MEIER, DAN			
<b>Well Name:</b> SKR			<b>Well #:</b> 698-04-AV-9			<b>API/UWI #:</b> 05045-17211	
<b>Field:</b> SKINNER RIDGE		<b>City (SAP):</b> PARACHUTE		<b>County/Parish:</b> Garfield		<b>State:</b> Colorado	
<b>Lat:</b> N 39.559 deg. OR N 39 deg. 33 min. 33.26 secs.				<b>Long:</b> W 108.338 deg. OR W -109 deg. 39 min. 41.623 secs.			
<b>Contractor:</b> H&P 318			<b>Rig/Platform Name/Num:</b> H&P 318				
<b>Job Purpose:</b> Cement Surface Casing							
<b>Well Type:</b> Development Well			<b>Job Type:</b> Cement Surface Casing				
<b>Sales Person:</b> DUNNING, DUSTIN			<b>Srvc Supervisor:</b> WYLEY, KEVIN			<b>MBU ID Emp #:</b> 339437	

HES Emp Name	Exp Hrs	Emp #	HES Emp Name	Exp Hrs	Emp #	HES Emp Name	Exp Hrs	Emp #
ARNOLD, EDWARD John	4	439784	HANSEN, TED Lance	4	396847	HOEFER, FREEMAN Dennis	4	369666
WYLEY, KEVIN Todd	4	339437						

HES Unit #		Distance-1 way		Equipment		Distance-1 way	
10038849C	120 mile	10783493	120 mile	10784080	120 mile	10804487	120 mile
10804579	120 mile	10822007	120 mile	10829461	120 mile	6345	120 mile

500 HOURS								
Date	On Location Hours	Operating Hours	Date	On Location Hours	Operating Hours	Date	On Location Hours	Operating Hours
12/3/08	3	1						
TOTAL			Total in the course of 500 hours					

Job					Job Times			
Formation Name					Called Out	03 - Dec - 2008	02:30	MST
Formation Depth (MD)	Top		Bottom		On Location	03 - Dec - 2008	06:45	MST
Form Type	BHST				Job Started	03 - Dec - 2008	08:26	MST
Job depth MD	1335. ft		Job Depth TVD	1335. ft	Job Completed	03 - Dec - 2008	09:29	MST
Water Depth			Wk Ht Above Floor	4. ft	Departed Loc	03 - Dec - 2008	12:00	MST
Perforation Depth (MD)	From		To					

Description	New / Used	Max pressure psig	Size in	ID in	Weight lbm/ft	Well Data					
						Thread	Grade	Top MD ft	Bottom MD ft	Top TVD ft	Bottom TVD ft
Open Hole				12.25				.	1335.	.	1335.
Surface Casing	Unknown		8.625	8.097	24.			.	1335.	.	1335.

Description	Qty	Qty uom	Depth	Supplier
PLUG,CMTG, TOP, 8 5/8, HW, 7.20 MIN/8.09 MA	1	EA		

Tools and Accessories													
Type	Size	Qty	Make	Depth	Type	Size	Qty	Make	Depth	Type	Size	Qty	Make
Guide Shoe					Packer					Top Plug	8 5/8	1	
Float Shoe					Bridge Plug					Bottom Plug			
Float Collar					Retainer					SSR plug set			
Insert Float										Plug Container	8 5/8	1	
Stage Tool										Centralizers			

Miscellaneous Materials													
Gelling Agt		Conc		Surfactant		Conc		Acid Type		Qty		Conc	%
Treatment Fld		Conc		Inhibitor		Conc		Sand Type		Size		Qty	



Fluid Data									
Stage/Plug #: 1									
Fluid #	Stage Type	Fluid Name	Qty	Qty uom	Mixing Density lbm/gal	Yield ft <sup>3</sup> /sk	Mix Fluid Gal/sk	Rate bbl/min	Total Mix Fluid Gal/sk
1	DYED AND POLYFLAKE SPACER		50	bbl	8.33	.0	.0	6	
2	Lead Cement	VERSACEM (TM) SYSTEM (452010)	235	sacks	12.3	2.38	13.75	6	.42
	0.423 Gal	FRESH WATER							
3	Tail Cement	VERSACEM (TM) SYSTEM (452010)	160	sacks	12.8	2.11	11.75	6	.32
	0.323 Gal	FRESH WATER							
4	H2O DISPLACEMENT		82.2	bbl	8.33	.0	.0	7	
Calculated Values		Pressures		Volumes					
Displacement		Shut In: Instant		Lost Returns		Cement Slurry		Pad	
Top Of Cement		5 Min		Cement Returns		Actual Displacement		Treatment	
Frac Gradient		15 Min		Spacers		Load and Breakdown		Total Job	
Rates									
Circulating	RIG	Mixing	6	Displacement	7	Avg. Job	6		
Cement Left In Pipe	Amount	43 ft	Reason	Shoe Joint					
Frac Ring # 1 @	ID	Frac ring # 2 @	ID	Frac Ring # 3 @	ID	Frac Ring # 4 @	ID		
The Information Stated Herein Is Correct				Customer Representative Signature					

*The Road to Excellence Starts with Safety*

Sold To #: 338668	Ship To #: 2695763	Quote #:	Sales Order #: 6359551
Customer: CHEVRON - MID-CONTINENT EBIZ	Customer Rep: MEIER, DAN		
Well Name: SKR	Well #: 698-04-AV-9	API/UWI #: 05045-17211	
Field: SKINNER RIDGE	City (SAP): PARACHUTE	County/Parish: Garfield	State: Colorado
Legal Description:			
Lat: N 39.559 deg. OR N 39 deg. 33 min. 33.26 secs.	Long: W 108.338 deg. OR W -109 deg. 39 min. 41.623 secs.		
Contractor: H&P 318	Rig/Platform Name/Num: H&P 318		
Job Purpose: Cement Surface Casing	Ticket Amount:		
Well Type: Development Well	Job Type: Cement Surface Casing		
Sales Person: DUNNING, DUSTIN	Srv Supervisor: WYLEY, KEVIN	MBU ID Emp #: 339437	

Activity Description	Date/Time	Cht #	Rate bbl/ min	Volume bbl		Pressure psig		Comments
				Stage	Total	Tubing	Casing	
Call Out	12/03/2008 02:30							
Depart Yard Safety Meeting	12/03/2008 04:00							SAFETY MEETING INVOLVING THE ENTIRE CMT CREW
Arrive At Loc	12/03/2008 06:45							STILL RUNNING CASING
Assessment Of Location Safety Meeting	12/03/2008 06:50							ASSESSMENT OF LOCATION INVOLVING THE ENTIRE CMT CREW
Rig-Up Equipment	12/03/2008 07:00							
Circulate Well	12/03/2008 07:45							RIG CIRCULATED FOR ABOUT 30 MIN PRIOR TO CEMENT JOB
Pre-Job Safety Meeting	12/03/2008 08:00							SAFETY MEETING INVOLVING EVERYONE ON LOCATION
Start Job	12/03/2008 08:26							TD 1335', TP 1335', SJ 43', 12 1/4" OH, 8 5/8" 24# J-55 CSG, 9 MW
Other	12/03/2008 08:27		2	2			106.0	PRIME LINES WITH FRESH WATER
Test Lines	12/03/2008 08:30						2800.0	PSI TEST GOOD
Pump Spacer	12/03/2008 08:32		6	50			180.0	FRESH WATER SPACER, THE LAST 20 BBLS W/POL-E-FLAKE, NO DYE USED PER CO REP.
Pump Lead Cement	12/03/2008 08:41		6	99.6			261.0	235 SKS, 12.3 PPG, 2.38 FT3/SK, 13.75 GAL/SK



*The Road to Excellence Starts with Safety*

Sold To #: 338668	Ship To #: 2695763	Quote #:	Sales Order #: 6359551
Customer: CHEVRON - MID-CONTINENT EBIZ	Customer Rep: MEIER, DAN		
Well Name: SKR	Well #: 698-04-AV-9	API/UWI #: 05045-17211	
Field: SKINNER RIDGE	City (SAP): PARACHUTE	County/Parish: Garfield	State: Colorado
Legal Description:			
Lat: N 39.559 deg. OR N 39 deg. 33 min. 33.26 secs.	Long: W 108.338 deg. OR W -109 deg. 39 min. 41.623 secs.		
Contractor: H&P 318	Rig/Platform Name/Num: H&P 318		
Job Purpose: Cement Surface Casing	Ticket Amount:		
Well Type: Development Well	Job Type: Cement Surface Casing		
Sales Person: DUNNING, DUSTIN	Srv Supervisor: WYLEY, KEVIN	MBU ID Emp #: 339437	

Activity Description	Date/Time	Cht #	Rate bbl/min	Volume bbl		Pressure psig		Comments
				Stage	Total	Tubing	Casing	
Call Out	12/03/2008 02:30							
Depart Yard Safety Meeting	12/03/2008 04:00							SAFETY MEETING INVOLVING THE ENTIRE CMT CREW
Arrive At Loc	12/03/2008 06:45							STILL RUNNING CASING
Assessment Of Location Safety Meeting	12/03/2008 06:50							ASSESSMENT OF LOCATION INVOLVING THE ENTIRE CMT CREW
Rig-Up Equipment	12/03/2008 07:00							
Circulate Well	12/03/2008 07:45							RIG CIRCULATED FOR ABOUT 30 MIN PRIOR TO CEMENT JOB
Pre-Job Safety Meeting	12/03/2008 08:00							SAFETY MEETING INVOLVING EVERYONE ON LOCATION
Start Job	12/03/2008 08:26							TD 1335', TP 1335', SJ 43', 12 1/4" OH, 8 5/8" 24# J-55 CSG, 9 MW
Other	12/03/2008 08:27		2	2			106.0	PRIME LINES WITH FRESH WATER
Test Lines	12/03/2008 08:30						2800.0	PSI TEST GOOD
Pump Spacer	12/03/2008 08:32		6	50			180.0	FRESH WATER SPACER, THE LAST 20 BBLS W/POL-E-FLAKE, NO DYE USED PER CO REP.
Pump Lead Cement	12/03/2008 08:41		6	99.6			261.0	235 SKS, 12.3 PPG, 2.38 FT3/SK, 13.75 GAL/SK

**HALLIBURTON**

***Cementing Job Log***

Pump Tail Cement	12/03/2008 08:58		6	60.1			240.0	160 SKS, 12.8 PPG, 2.11 FT3/SK, 11.75 GAL/SK
------------------	---------------------	--	---	------	--	--	-------	--

Sold To # : 338668

Ship To # :2695763

Quote # :

Sales Order # :

6359551

SUMMIT Version: 7.20.130

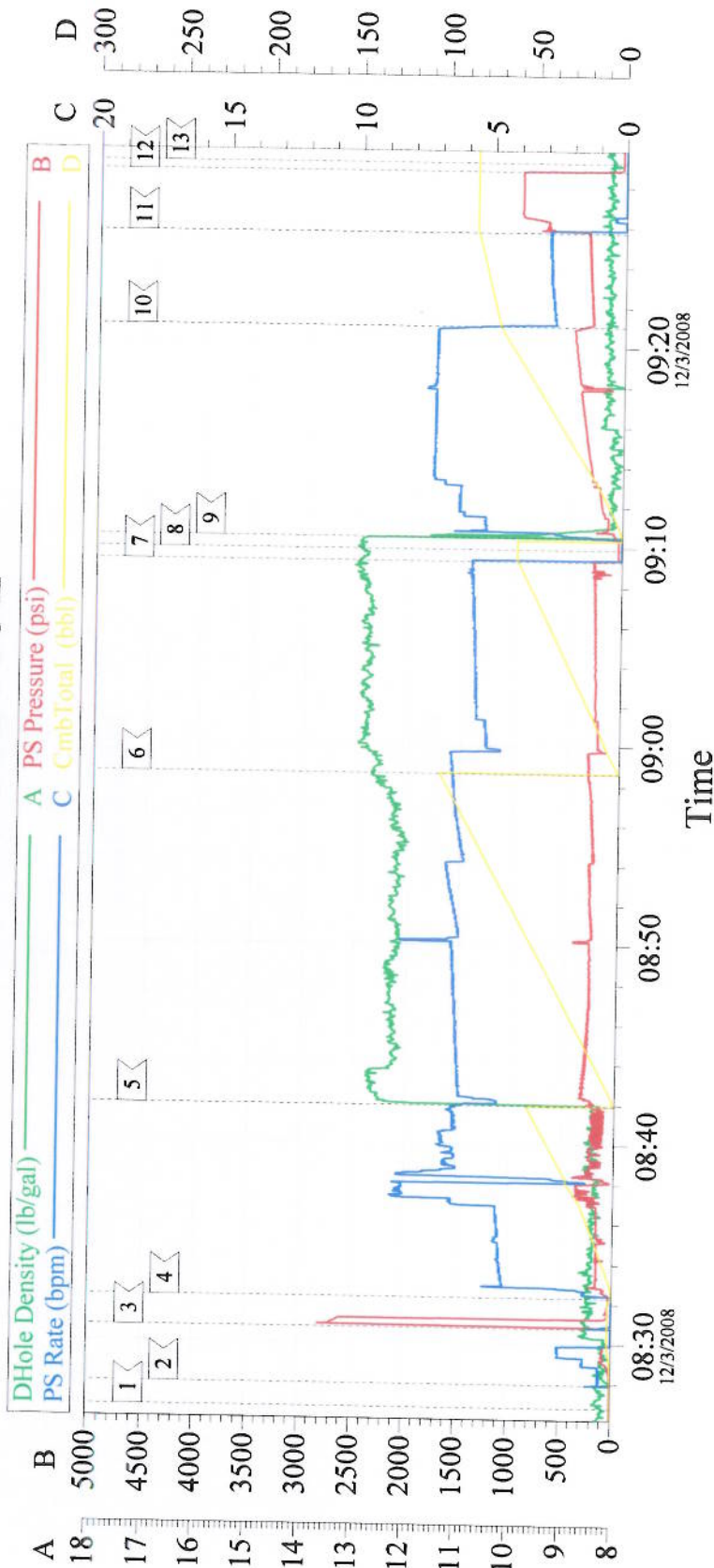
Wednesday, December 03, 2008 10:17:00

## Cementing Job Log

Activity Description	Date/Time	Cht #	Rate bbl/ min	Volume bbl		Pressure psig		Comments
				Stage	Total	Tubing	Casing	
Shutdown	12/03/2008 09:09							DROP TOP PLUG
Drop Top Plug	12/03/2008 09:09							PLUG LEFT THE CONTAINER
Pump Displacement	12/03/2008 09:10		7	82.2			465.0	FRESH WATER DISPLACEMENT
Slow Rate	12/03/2008 09:21		3	70			350.0	SLOW RATE THE LAST 10 BBLS OF DISPLACEMENT TO LAND THE PLUG
Bump Plug	12/03/2008 09:25		3	82.2			990.0	PLUG LANDED
Check Floats	12/03/2008 09:28							FLOATS HELD
End Job	12/03/2008 09:29							GOOD CIRCULATION THROUGHOUT THE ENTIRE JOB, 45 BBLS OF CEMENT TO SURFACE, NO PIPE MOVEMENT DURING THE JOB
Pre-Rig Down Safety Meeting	12/03/2008 09:45							SAFETY MEETING INVOLVING THE ENTIRE CEMENT CREW
Rig-Down Equipment	12/03/2008 10:00							
Safety Meeting - Departing Location	12/03/2008 12:00							SAFETY MEETING INVOLVING THE ENTIRE CMT CREW
Comment	12/03/2008 12:01							THANK YOU FOR USING HALLIBURTON



# 8 5/8 SURFACE



## Event Log

1	START JOB	08:26:48	2	PRIME LINES	08:27:58	3	TEST LINES	08:30:47
4	WATER SPACER	08:32:18	5	LEAD CEMENT	08:41:56	6	TAIL CEMENT	08:58:36
7	SHUTDOWN	09:09:17	8	DROP TOP PLUG	09:09:53	9	DISPLACEMENT	09:10:29
10	SLOW RATE	09:21:03	11	LAND PLUG	09:25:44	12	CHECK FLOATS	09:28:47
13	END JOB	09:29:13						

Customer: CHEVRON  
 Well Desc: SKR 698-04-AV-9  
 ADC USED YES

Job Date: 12/3/08  
 CO. REP. DAN MEIER  
 TRUCK # CMT 400#1

Ticket #: 6359551  
 SUPERVISOR KEVIN WYLEY  
 OPERATOR EDWARD ARNOLD

OptiCem RT v2.5.2  
 03-Dec-08 09:50