

**CHEVRON - MID-CONTINENT EBIZ
11111 S WILCREST DR - DO NOT MAIL
HOUSTON, Texas**

SKR
SKR 698-04-AV-05

H&P 318/H&P/318

Post Job Summary

Cement Production Casing

Prepared for: CHAD
Date Prepared: 12/24/08
Version: 1

Service Supervisor: ERIC CARTER

Submitted by:

HALLIBURTON

The Road to Excellence Starts with Safety

Sold To #: 338668	Ship To #: 338668	Quote #:	Sales Order #: 6397695
Customer: CHEVRON - MID-CONTINENT EBIZ		Customer Rep:	
Well Name: SKR	Well #: 698-04-AV-05	API/UWI #:	
Field: SKINNER RIDGE	City (SAP):	County/Parish: Garfield	State: Colorado
Contractor: H&P 318	Rig/Platform Name/Num: H&P 318		
Job Purpose: Cement Production Casing			
Well Type: Development Well		Job Type: Cement Production Casing	
Sales Person:		Srv Supervisor:	MBU ID Emp #:

Job Personnel

HES Emp Name	Exp Hrs	Emp #	HES Emp Name	Exp Hrs	Emp #	HES Emp Name	Exp Hrs	Emp #
CARTER, ERIC Earl	14	345598	CHRISTOFFERSON, JUSTIN Wayne	14	435308	JAMISON, PRICE W	14	229155
KUKUS, CHRISTOPHER A	14	413952	LOCKLEAR, BRANDON Nakya	14	445806			

Equipment

HES Unit #	Distance-1 way	HES Unit #	Distance-1 way	HES Unit #	Distance-1 way	HES Unit #	Distance-1 way
10547376	60 mile	10719786	60 mile	10867423	60 mile	10872429	60 mile
10897887	60 mile	10897909	60 mile				

Job Hours

Date	On Location Hours	Operating Hours	Date	On Location Hours	Operating Hours	Date	On Location Hours	Operating Hours
12/23/08	1	0	12/24/08	13	2.75			

TOTAL

Total is the sum of each column separately

Job

Job Times

Formation Name	Formation Depth (MD)	Top	Bottom	Job depth MD	Water Depth	Perforation Depth (MD)	Date	Time	Time Zone
		0	6222 FT	6195. ft			23 - Dec - 2008	17:30	MST
		BHST					23 - Dec - 2008	23:00	MST
							24 - Dec - 2008	09:10	MST
							24 - Dec - 2008	11:00	MST
							24 - Dec - 2008	13:00	MST

Well Data

Description	New / Used	Max pressure psig	Size in	ID in	Weight lbm/ft	Thread	Grade	Top MD ft	Bottom MD ft	Top TVD ft	Bottom TVD ft
-------------	------------	-------------------	---------	-------	---------------	--------	-------	-----------	--------------	------------	---------------

Sales/Rental/3rd Party (HES)

Description	Qty	Qty uom	Depth	Supplier
PLUG, CMTG, TOP, 4 1/2, HW, 3.65 MIN/4.14 MA	1	EA		
PORT. DAS W/CEMWIN; ACQUIRE W/HES, ZI	1	JOB		
ADC (AUTO DENSITY CTRL) SYS, /JOB, ZI	1	JOB		

Tools and Accessories

Type	Size	Qty	Make	Depth	Type	Size	Qty	Make	Depth	Type	Size	Qty	Make
Guide Shoe					Packer					Top Plug	1	4.5	
Float Shoe					Bridge Plug					Bottom Plug			
Float Collar					Retainer					SSR plug set			
Insert Float										Plug Container	1	4.5	
Stage Tool										Centralizers			

Miscellaneous Materials

Gelling Agt	Conc	Surfactant	Conc	Acid Type	Qty	Conc	%
Treatment Fld	Conc	Inhibitor	Conc	Sand Type	Size	Qty	

Fluid Data									
Stage/Plug #: 1									
Fluid #	Stage Type	Fluid Name	Qty	Qty uom	Mixing Density lbm/gal	Yield ft ³ /sk	Mix Fluid Gal/sk	Rate bbl/min	Total Mix Fluid Gal/sk
1	Dyed Polyflake Spacer		20	bbl	8.33	.0	.0	8.0	
2	FRESH WATER SPACER		30		8.33			8	
2	Lead Cement	VARICEM (TM) CEMENT (452009)	96.6	sacks	12.8	1.55	7.15	8.0	7.67
	7.674 Gal	FRESH WATER							
3	Tail Cement	VARICEM (TM) CEMENT (452009)	168.1	sacks	13.2	1.43	6.19	8.0	7.0
4	KCL DISPLACEMENT		95.3	bbl	8.4	.0	.0	8.0	
Calculated Values		Pressures		Volumes					
Displacement	95.3	Shut In: Instant		Lost Returns	NONE	Cement Slurry		Pad	
Top Of Cement	SURFACE	5 Min		Cement Returns	18	Actual Displacement	95.3	Treatment	
Frac Gradient		15 Min		Spacers		Load and Breakdown		Total Job	410
Rates									
Circulating		Mixing	8	Displacement	8	Avg. Job			8
Cement Left In Pipe	Amount	48 ft	Reason	Shoe Joint					
Frac Ring # 1 @	ID	Frac ring # 2 @	ID	Frac Ring # 3 @	ID	Frac Ring # 4 @	ID		
The Information Stated Herein Is Correct				Customer Representative Signature					

The Road to Excellence Starts with Safety

Sold To #: 338668	Ship To #: 338668	Quote #:	Sales Order #: 6397695
Customer: CHEVRON - MID-CONTINENT EBIZ		Customer Rep:	
Well Name: SKR	Well #: 698-04-AV-05	API/UWI #:	
Field: SKINNER RIDGE	City (SAP):	County/Parish: Garfield	State: Colorado
Legal Description:			
Lat:		Long:	
Contractor: H&P 318	Rig/Platform Name/Num: H&P 318		
Job Purpose: Cement Production Casing			Ticket Amount:
Well Type: Development Well	Job Type: Cement Production Casing		
Sales Person:	Srv Supervisor:	MBU ID Emp #:	

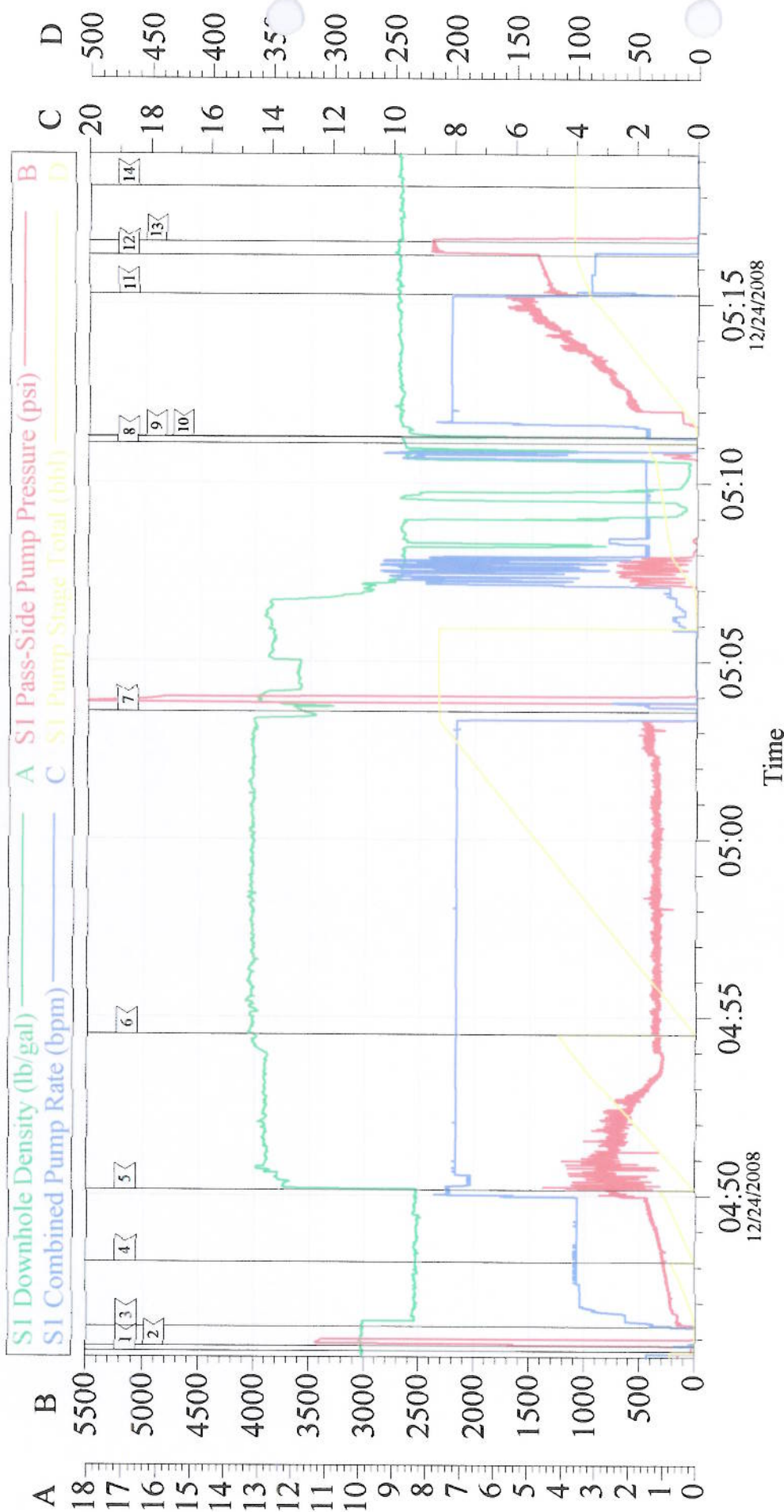
Activity Description	Date/Time	Cht #	Rate bbl/min	Volume bbl		Pressure psig		Comments
				Stage	Total	Tubing	Casing	
Depart Yard Safety Meeting	12/23/2008 01:55							ATTENDED BY ALL HES CREW
Call Out	12/23/2008 17:30							
Crew Leave Yard	12/23/2008 21:00							
Arrive At Loc	12/23/2008 23:00							
Assessment Of Location Safety Meeting	12/23/2008 23:10							ATTENDED BY ALL HES CREW
Other	12/24/2008 07:30							SPOT EQUIPMENT
Pre-Rig Up Safety Meeting	12/24/2008 07:50							ATTENDED BY ALL HES CREW
Rig-Up Equipment	12/24/2008 08:00							
Pre-Job Safety Meeting	12/24/2008 08:30							ATTENDED BY ALL HES CREW AND RIG CREW
Start Job	12/24/2008 09:10							TP 6195', TD 6222', SJ 48', MW 10.2 PPG, CASING 4.5" 11.6 # N-80, HOLE 7 7/8", SURFACE CASING SET AT 1035', 8 5/8", 36#
Test Lines	12/24/2008 09:15		2	2				PRESSURED UP TO 3440 PSI, PRESSURE HELD
Pump Spacer 1	12/24/2008 09:21		4	20			260.0	POLY FLAKE SPACER
Pump Spacer 2	12/24/2008 09:30		8	30			700.0	FRESH WATER

Cementing Job Log

Activity Description	Date/Time	Cht #	Rate bbl/min	Volume bbl		Pressure psig		Comments
				Stage	Total	Tubing	Casing	
Pump Lead Cement	12/24/2008 09:38		8	96.6			850.0	350 SKS, MIXED AT 12.8 PPG, 1.55 YEILD, 7.15 GL/SK
Pump Tail Cement	12/24/2008 09:50		8	168.1			380.0	660 SKS MIXED AT 13.2 PPG, 1.43 YEILD, 6.19 GL/SK
Shutdown	12/24/2008 10:18							
Clean Lines	12/24/2008 10:20							
Drop Plug	12/24/2008 10:39							PLUG LAUNCHED
Pump Displacement	12/24/2008 10:40		8	85.3			1600.0	KCL WATER
Slow Rate	12/24/2008 10:54		3	10			1400.0	
Bump Plug	12/24/2008 10:56		3	95.3			2400.0	PLUG BUMPED AT 1431
Check Floats	12/24/2008 10:59							FLOATS HELD
End Job	12/24/2008 11:00							GOOD CIRCULATION THROUGH OUT JOB, 18 BBLS TO SURFACE
Post-Job Safety Meeting (Pre Rig-Down)	12/24/2008 11:05							ATTENDED BY ALL HES CREW
Rig-Down Equipment	12/24/2008 11:15							
Depart Location Safety Meeting	12/24/2008 12:50							ATTENDED BY ALL HES CREW
Crew Leave Location	12/24/2008 13:00							

CHEVRON

4 1/2" PRODUCTION



Customer: CHEVRON	Job Date: 24-Dec-2008	Sales Order #: 6397695	OptiCem v6.4.0
Well Name: SKR	Well #: 698-04-AV-05	ADC Used: YES	24-Dec-08 12:23
Company Rep: CILAD	Cement Supervisor: ERIC CARTER	Elite #/Operator: 11/ CHRIS KUKUS	