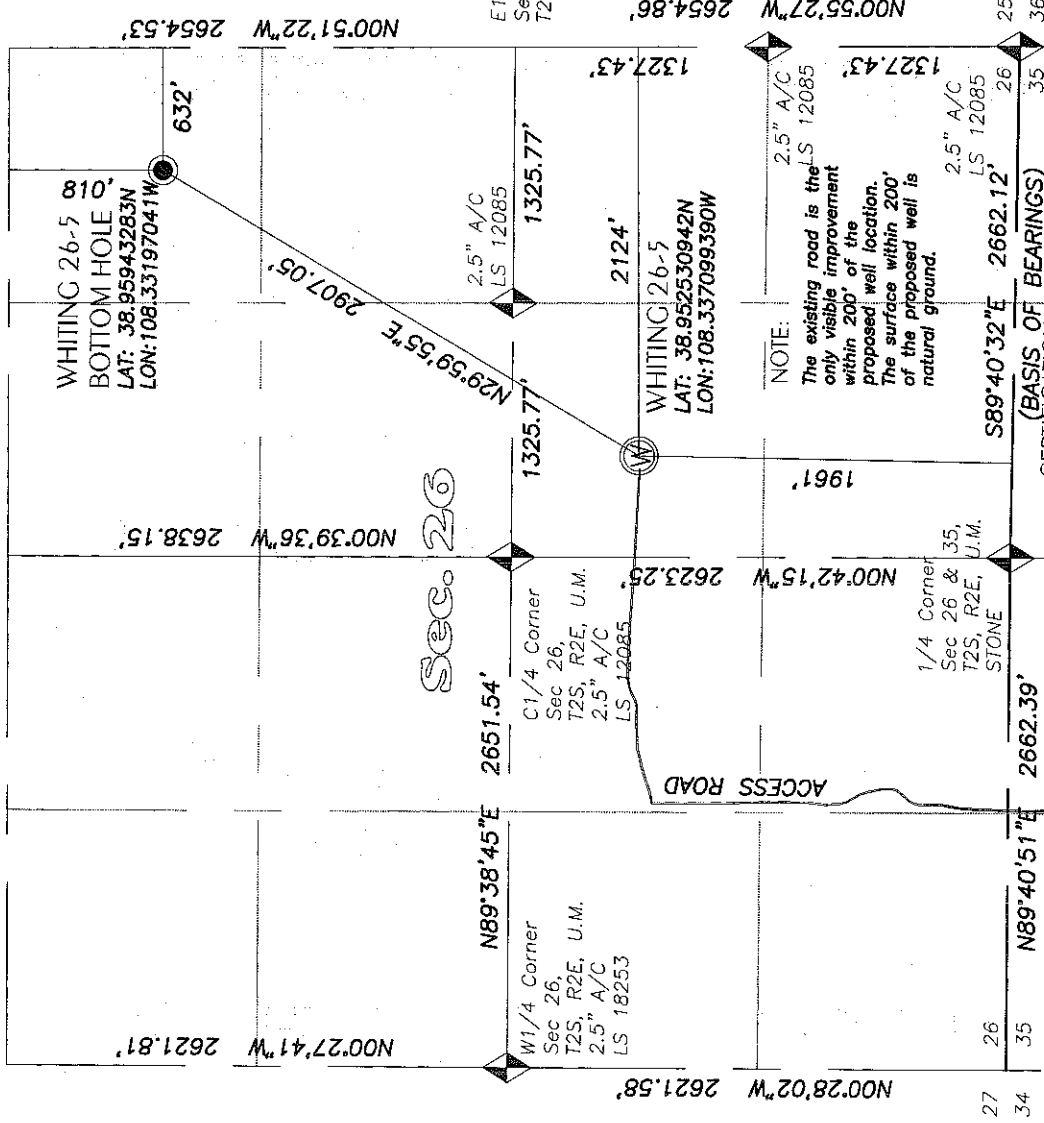


# SECTION 26, T2S, R2E, UTE MERIDIAN

N89°17'32"E 2642.42'

S89°17'32"W 2642.42'



## LEGEND

◆ FOUND ALIQUOT CORNERS



All Lineal Units used are U.S. Survey feet.

## WELL LOCATION

COLLAR: 1961' FSL - 2124' FEL  
SECTION 26, T2S, R2E,  
UTE MERIDIAN, MESA COUNTY, CO.

BOTTOM HOLE: 810' FNL - 632' FEL  
SECTION 26, T2S, R2E,  
UTE MERIDIAN, MESA COUNTY, CO.

GPS OPERATOR: RICHARD MULLIKEN  
PDOP = <6

OPERATOR: FRAM AMERICAS

WELL ID: WHITING 26-5

DRILL HOLE ELEVATION: 5412'  
ELEVATIONS BASED ON NAVD 88

## Basis of Bearings Statement:

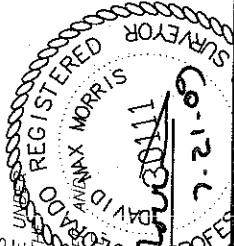
Bearings are based on the Meso County Local Coordinate System. GPS observations on the Survey Monuments located at the SE Corner and at the S1/4 Corner Section 26, Township 2 South, Range 2 East of the Ute Meridian results in the bearing of S89°40'32"E.

## NOTE:

Section Breakdown based on plat of drilling location performed by High Desert Surveying. A field verification of various corners was performed and shown hereon.

I, DAVID MAX MORRIS, CERTIFY THAT THIS PLAT IS PREPARED FROM FIELD NOTES OF A SURVEY MADE UNDER MY DIRECT SUPERVISION IN JULY OF 2009, AND THE INFORMATION SHOWN HEREON IS BASED ON THIS SURVEYOR'S KNOWLEDGE, INFORMATION AND BELIEF. IT DOES NOT CONSTITUTE A WARRANTY OR GUARANTEE, EITHER EXPRESSED OR IMPLIED.

CERTIFICATION (BASIS OF BEARINGS)



COLORADO REGISTERED

PROFESSIONAL LAND SURVEYOR L.S. 30110

WELL LOCATION MAP

SITUATED IN SECTION 26, T2S, R2E, OF THE

FOR: FRAM AMERICAS

ACAD ID: WHITING 26-5

SCALE: 1" = 1000'

SHEET NO. 1 OF 1

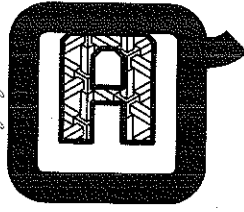
SURVEYED DATE: 7/20/09

DRAWN DATE: 7/21/09

DRAWN BY: DMM

REVISED DATE: 7/21/09

FILE: 2009-194.00



QED.  
SURVEYING  
SYSTEMS, INC.

1018 Colorado Ave  
Grand Junction, CO  
81501-3521

(970) 241-2370

Fax: 241-7025

Surveying Western Colorado Since 1979