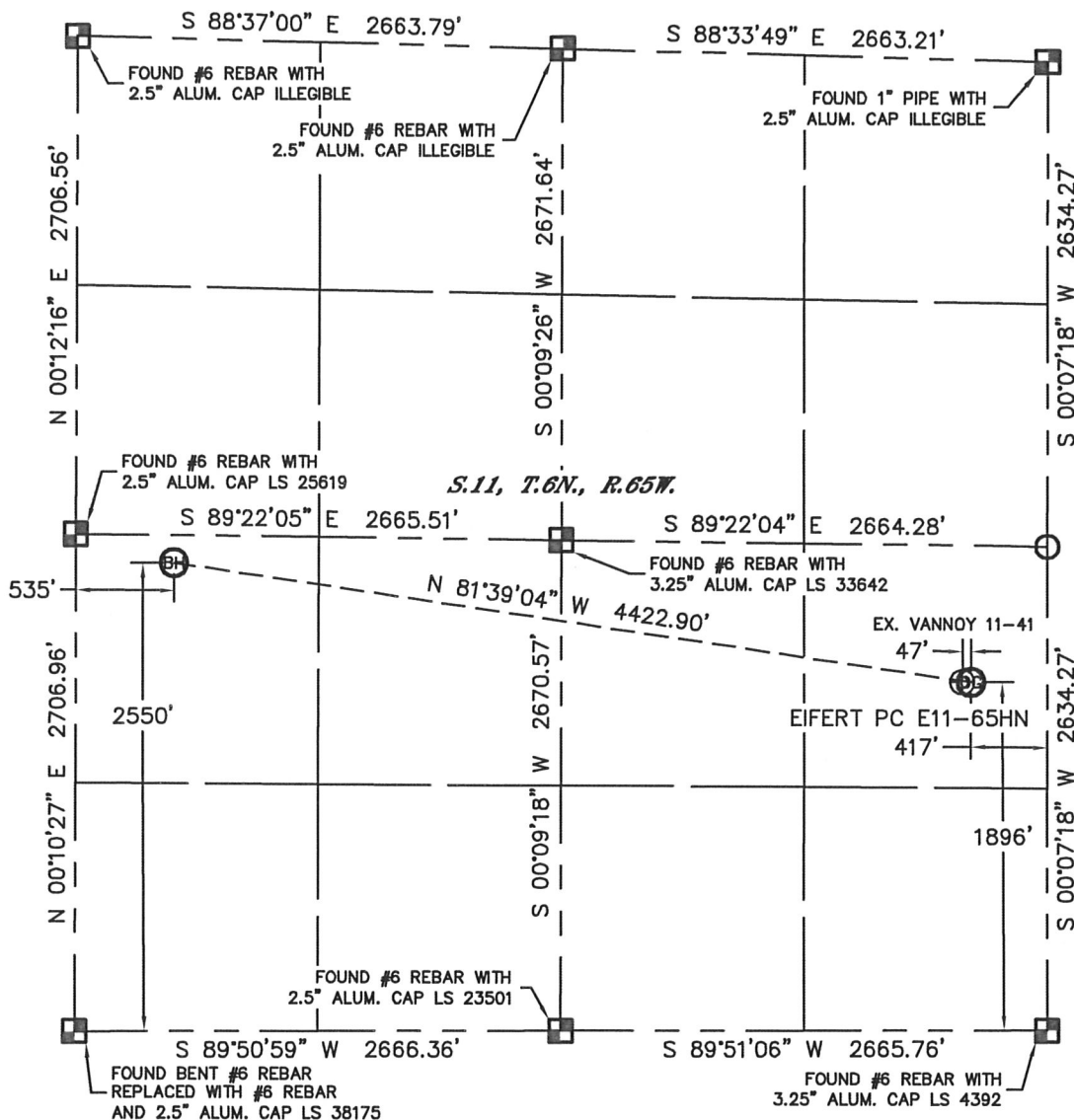


WELL LOCATION CERTIFICATE

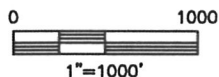
THIS MAP DOES NOT REPRESENT A BOUNDARY SURVEY

SECTION: 11
TOWNSHIP: 6N
RANGE: 65W



In accordance with a request from Nate McCorkell with Noble Energy Inc. Lat40°, Inc. has determined the surface location of the EIFERT PC E11-65HN to be 1896' from the SOUTH line and 417' from the EAST line and the bottom hole to be 2550' from the SOUTH line and 535' from the WEST line as measured at right angles from the section lines of Section 11, Township 6 North, Range 65 West of the Sixth Principal Meridian, County of Weld, State of Colorado.

I hereby state that this Well Location Certificate was prepared by me, or under my direct supervision, that the fieldwork was completed on 4/18/11, for and on behalf of Noble Energy Inc. That this is not a Land Survey Plat or an Improvement Survey Plat, and that it is not to be relied upon for establishment of fence, building, or other future improvement lines.



NOTE:

- 1) Bearings shown are Grid Bearings of the Colorado State Plane Coordinate System, North Zone, North American Datum 1983/2007. The lineal dimensions as contained herein are based upon the "U.S. Survey Foot."
- 2) Ground elevations are based on an observed GPS elevation (NAVD 1988 DATUM).
- 3) NEAREST EXISTING WELL: VANNOY 11-41, 47'
- 4) IMPROVEMENTS: See LOCATION DRAWING for all visible improvements within 400' of disturbed area.
- 5) SURFACE USE: CROP FIELD
- 6) INSTRUMENT OPERATOR: ADAM KELLY



SURFACE LOCATION
LATITUDE: 40.49874°N
LONGITUDE: 104.62233°W
PDOP: 1.6
ELEV: 4749'
1/4, 1/4: NE1/4SE1/4
NEAREST PROPERTY LINE: 204' NORTH

BOTTOM HOLE
LATITUDE: 40.50062°N
LONGITUDE: 104.63804°W

NOTE

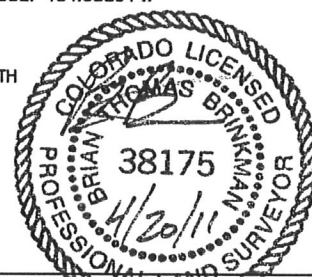
According to Colorado law, you must commence any legal action based upon any defect in this W.L.C. within three years after you discover such defect. In no event, may any action based upon any defect in this survey be commenced more than ten years after the date of the certificate shown hereon. (13-80-105 C.R.S.)

LEGEND

-  = ALIQUOT MONUMENT AS DESCRIBED
-  = CALCULATED POSITION

Brian T. Brinkman—On behalf of Lat40°, Inc.
Colorado Licensed Professional
Land Surveyor No. 38175

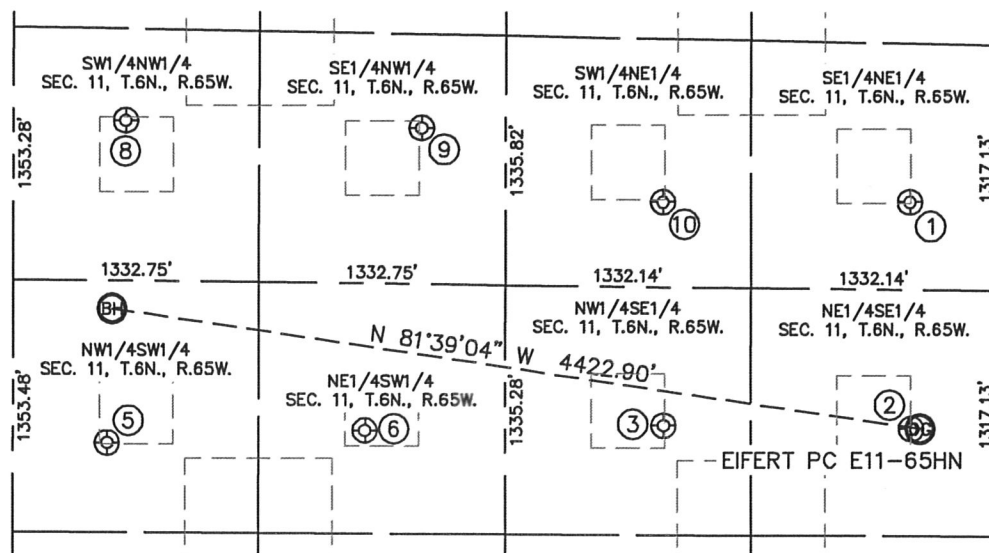
PROJECT#: 2011098



SITE SKETCH

EIFERT PC E11-65HN

SECTION: 11
TOWNSHIP: 6N
RANGE: 65W



①

WEBSTER 42-11
SE1/4NE1/4
2169' FNL
471' FWL
LAT-40.50208°N
LONG-104.62247°W
PDOP: 1.8
ELEV: 4751'

②

VANNOY 11-41
NE1/4SE1/4
1897' FSL
464' FEL
LAT-40.49874°N
LONG-104.62250°W
PDOP: 1.9
ELEV: 4750'

③

EIFERT 11-42
NW1/4SE1/4
1918' FSL
1805' FEL
LAT-40.49883°N
LONG-104.62731°W
PDOP: 2.0
ELEV: 4779'

⑤

ALM USX E13-11
NW1/4SW1/4
1831' FSL
509' FWL
LAT-40.49865°N
LONG-104.63816°W
PDOP: 2.0
ELEV: 4774'

⑥

ALM USX E11-11
NE1/4SW1/4
1893' FSL
1908' FWL
LAT-40.49879°N
LONG-104.63313°W
PDOP: 1.8
ELEV: 4791'

⑧

B. JOHNSON 12-11
SW1/4NW1/4
1840' FNL
607' FWL
LAT-40.50338°N
LONG-104.63773°W
PDOP: 1.3
ELEV: 4792'

⑨

WEBSTER 22-11
SE1/4NW1/4
1841' FNL
2212' FWL
LAT-40.50323°N
LONG-104.63196°W
PDOP: 1.1
ELEV: 4797'

⑩

WEBSTER 32-11
SW1/4NE1/4
2203' FNL
1808' FEL
LAT-40.50212°N
LONG-104.62727°W
PDOP: 1.6
ELEV: 4772'

