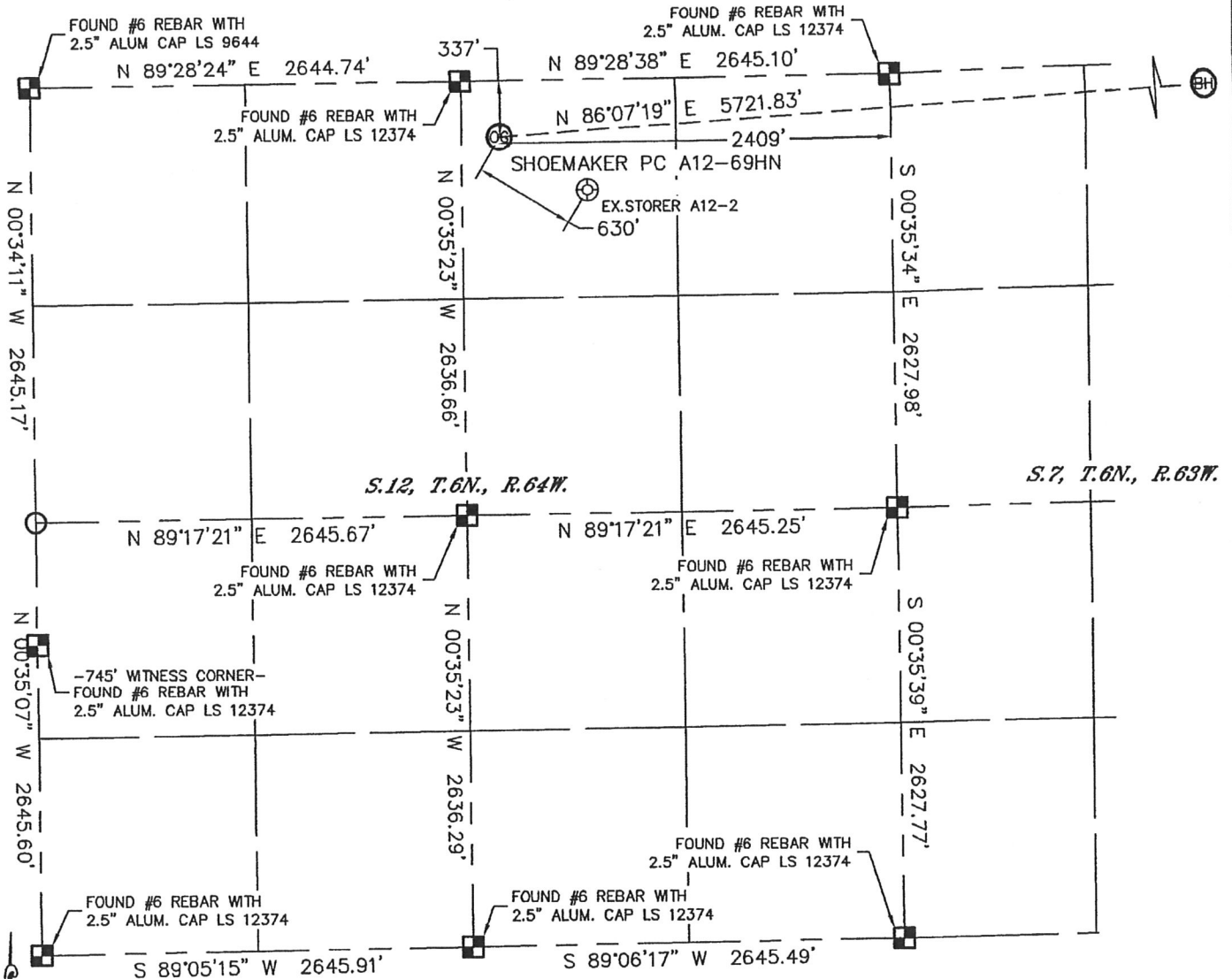


WELL LOCATION CERTIFICATE

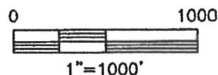
THIS MAP DOES NOT REPRESENT A BOUNDARY SURVEY

SECTION: 12
TOWNSHIP: 6N
RANGE: 64W



In accordance with a request from Nate McCorkell with Noble Energy Inc. Lat40°, Inc. has determined the surface location of the SHOEMAKER PC A12-69HN to be 337' from the NORTH line and 2409' from the EAST line as measured at right angles from the section lines of Section 12, Township 6 North, Range 64 West and the bottom hole to be 75' from the NORTH line and 1855' from the EAST line as measured at right angles from the section lines of Section 7, Township 6 North, Range 63 West of the Sixth Principal Meridian, County of Weld, State of Colorado.

I hereby state that this Well Location Certificate was prepared by me, or under my direct supervision, that the fieldwork was completed on 2/24/11, for and on behalf of Noble Energy Inc. That this is not a Land Survey Plat or an Improvement Survey Plat, and that it is not to be relied upon for establishment of fence, building, or other future improvement lines.



NOTE:

- 1) Bearings shown are Grid Bearings of the Colorado State Plane Coordinate System, North Zone, North American Datum 1983/2007. The lineal dimensions as contained herein are based upon the "U.S. Survey Foot."
- 2) Ground elevations are based on an observed GPS elevation (NAVD 1988 DATUM).
- 3) NEAREST EXISTING WELL: STORER A12-2, 630'
- 4) IMPROVEMENTS: See LOCATION DRAWING for all visible improvements within 400' of disturbed area.
- 5) SURFACE USE: PIVOT CORNER, PASTURE
- 6) INSTRUMENT OPERATOR: BRIAN BRINKMAN

SURFACE LOCATION
LATITUDE: 40.50711°N
LONGITUDE: 104.49746°W
PDOP: 1.6
ELEV: 4720'
1/4, 1/4: NW1/4NE1/4
NEAREST PROPERTY LINE: 236' WEST

BOTTOM HOLE
LATITUDE: 40.50800°N
LONGITUDE: 104.47692°W

NOTE

According to Colorado law, you must commence any legal action based upon any defect in this W.L.C. within three years after you discover such defect. In no event, may any action based upon any defect in this survey be commenced more than ten years after the date of the certificate shown hereon. (13-80-105 C.R.S.)

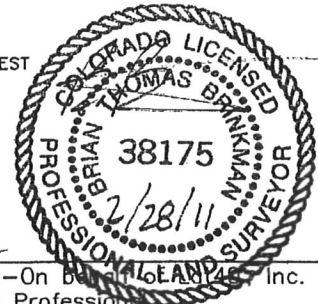
LEGEND

- = ALIQUOT MONUMENT AS DESCRIBED
- = CALCULATED POSITION

SHEET 1 OF 2

Brian T. Brinkman-On behalf of Lat40°, Inc.
Colorado Licensed Professional
Land Surveyor No. 38175

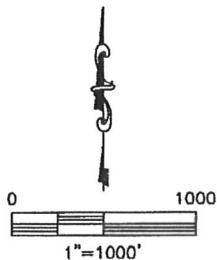
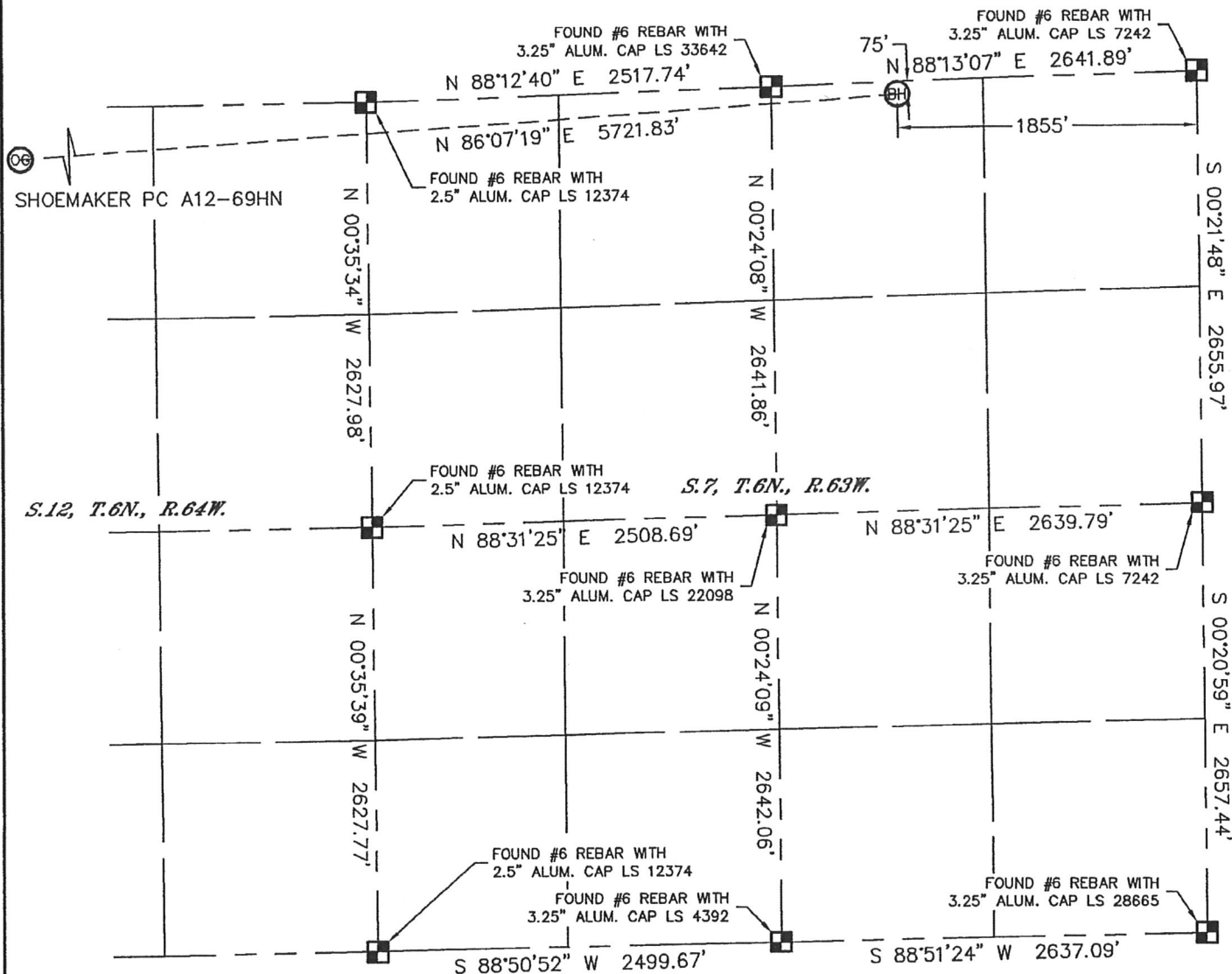
PROJECT#: 2011038



WELL LOCATION CERTIFICATE

THIS MAP DOES NOT REPRESENT A BOUNDARY SURVEY

SECTION: 12
TOWNSHIP: 6N
RANGE: 64W



NOTE
According to Colorado law, you must commence any legal action based upon any defect in this W.L.C. within three years after you discover such defect. In no event, may any action based upon any defect in this survey be commenced more than ten years after the date of the certificate shown hereon. (13-80-105 C.R.S.)

LEGEND

- = ALIQUOT MONUMENT AS DESCRIBED
- = CALCULATED POSITION

SHEET 2 of 2

Brian T. Brinkman—On behalf of Lat40°, Inc.
Colorado Licensed Professional
Land Surveyor No. 38175

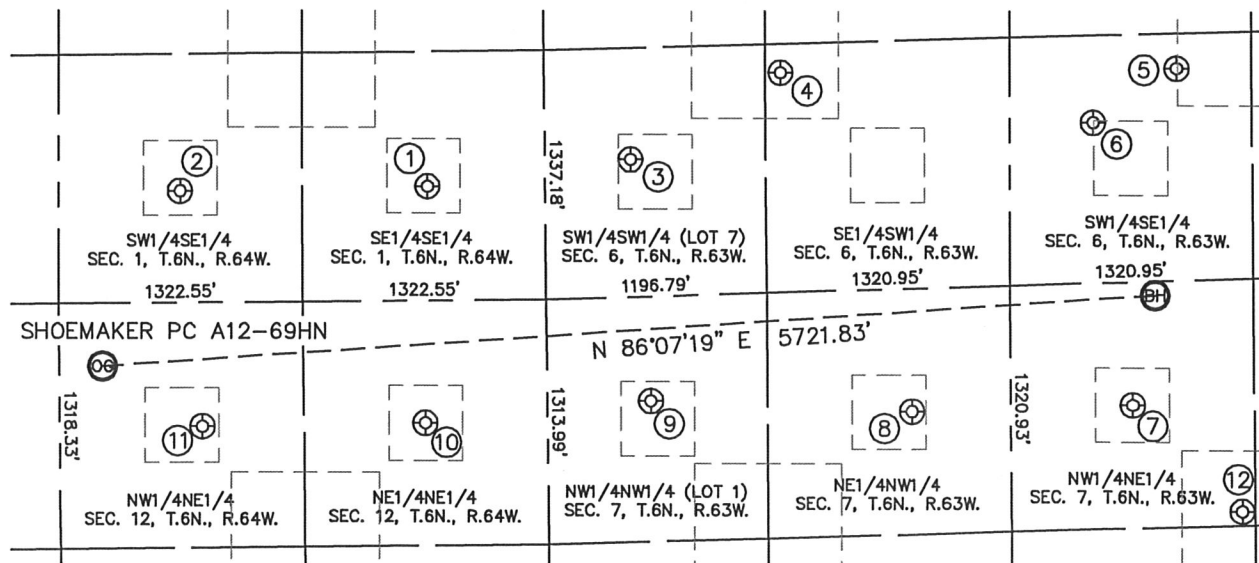
PROJECT#: 2011038



SITE SKETCH

SHOEMAKER PC A12-69HN

SECTION: 12
TOWNSHIP: 6N
RANGE: 64W



- | | | | | | |
|--|--|---|--|--|---|
| <p>①</p> <p>CECIL USX A1-16 SE1/4SE1/4 613' FSL 640' FEL LAT-40.50971N LONG-104.49109W PDOP: 1.8 ELEV: 4716'</p> | <p>②</p> <p>CECIL USX A01-15 SW1/4SE1/4 599' FSL 1981' FEL LAT-40.50968N LONG-104.49592W PDOP: 1.2 ELEV: 4728'</p> | <p>③</p> <p>FOSS 6-33 SW1/4SW1/4 (LOT 7) 738' FSL 466' FWL LAT-40.51007N LONG-104.48712W PDOP: 1.5 ELEV: 4708'</p> | <p>④</p> <p>FOSS 6-35 SE1/4SW1/4 1179' FSL 1285' FWL LAT-40.51133N LONG-104.48417W PDOP: 1.3 ELEV: 4705'</p> | <p>⑤</p> <p>FOSS 6-45 SW1/4SE1/4 1137' FSL 1717' FEL LAT-40.51133N LONG-104.47644W PDOP: 1.2 ELEV: 4695'</p> | <p>⑥</p> <p>FOSS 6-43 SW1/4SE1/4 859' FSL 2174' FEL LAT-40.51054N LONG-104.47808W PDOP: 1.6 ELEV: 4694'</p> |
| <p>⑦</p> <p>HAGERMEISTER USX AA7-2 NW1/4NE1/4 661' FNL 1980' FEL LAT-40.50638N LONG-104.47738W PDOP: 2.0 ELEV: 4694'</p> | <p>⑧</p> <p>HAGERMEISTER USX AA7-3 NE1/4NW1/4 659' FNL 1981' FWL LAT-40.50632N LONG-104.48168W PDOP: 1.7 ELEV: 4692'</p> | <p>⑨</p> <p>HAGERMEISTER USX AA7-4 NW1/4NW1/4 (LOT 1) 560' FNL 563' FWL LAT-40.50652N LONG-104.48677W PDOP: 1.4 ELEV: 4697'</p> | <p>⑩</p> <p>SHOEMAKER A12-1 NE1/4NE1/4 656' FNL 663' FEL LAT-40.50623N LONG-104.49118W PDOP: 1.6 ELEV: 4708'</p> | <p>⑪</p> <p>STORER A12-2 NW1/4NE1/4 665' FNL 1872' FEL LAT-40.50621N LONG-104.49553W PDOP: 1.2 ELEV: 4713'</p> | <p>⑫</p> <p>TRINITY USX AA7-17 NW1/4NE1/4 1249' FNL 1390' FEL LAT-40.50480N LONG-104.47527W PDOP: 1.7 ELEV: 4689'</p> |

