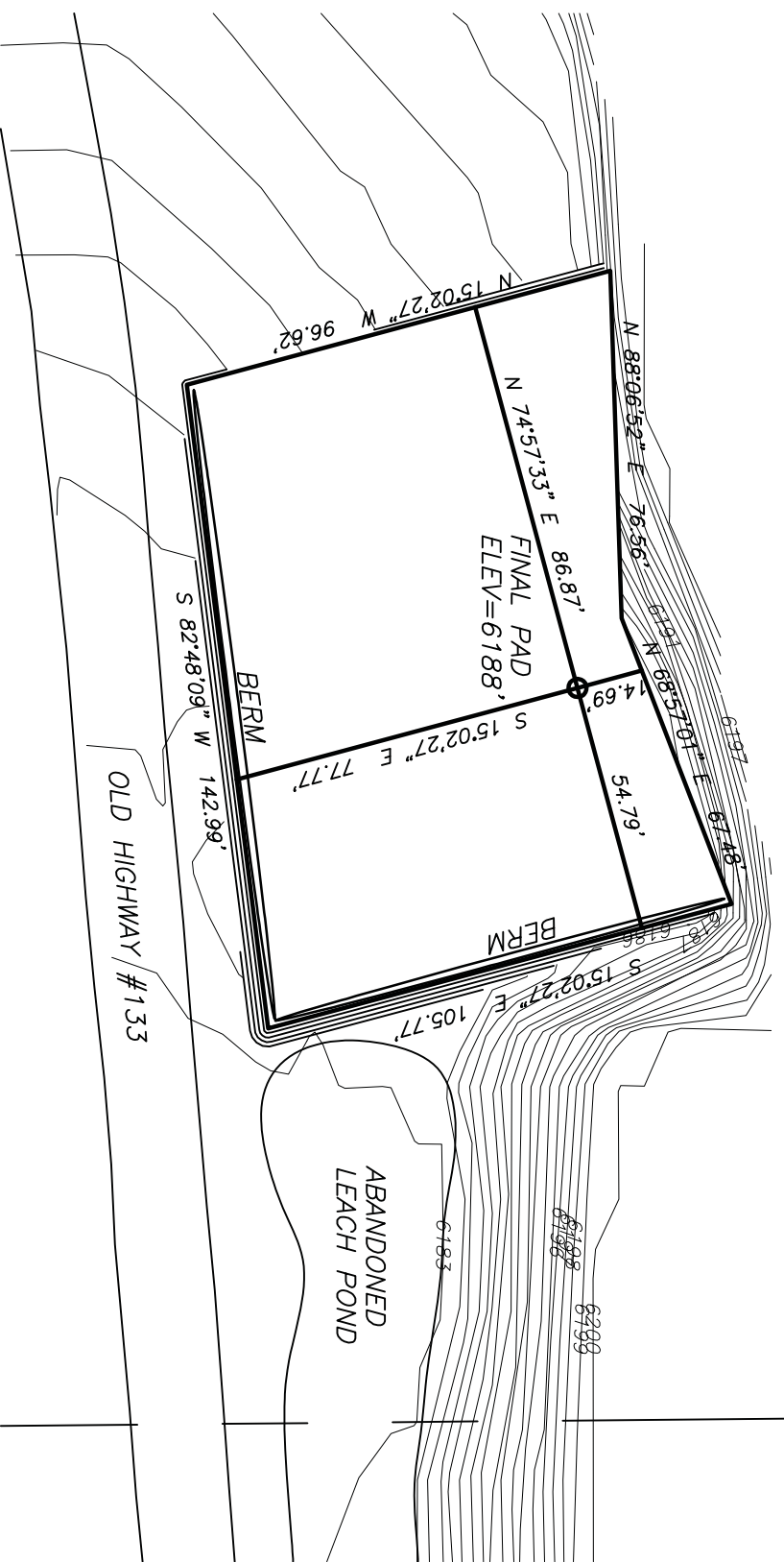
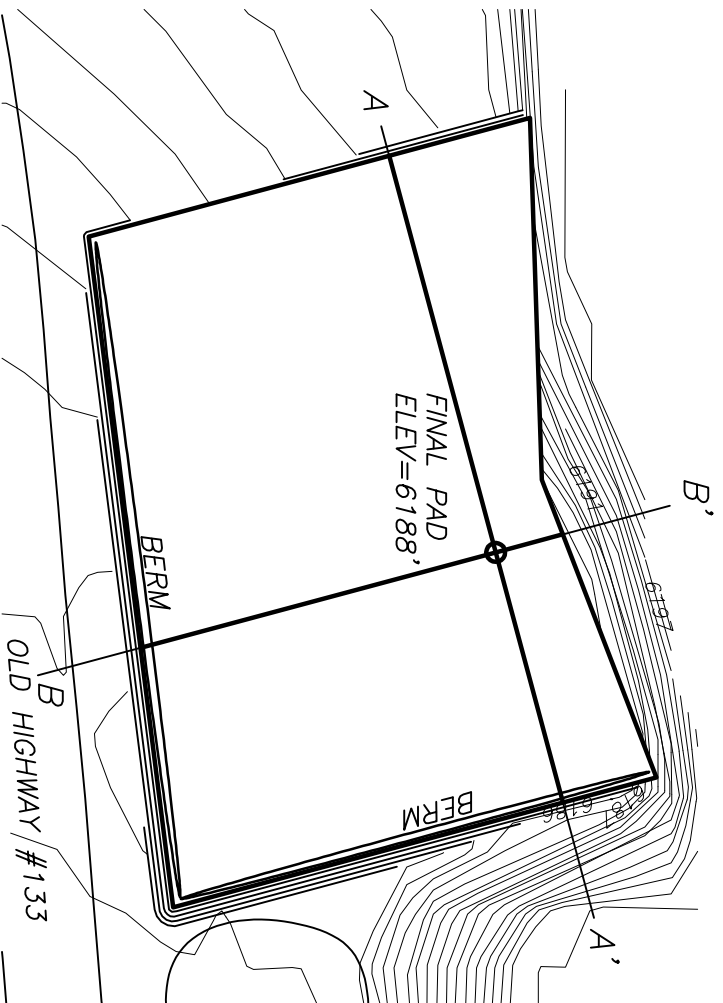


VESSELS COAL GAS, INC.-OXBOW MINING LLC #1 NE1/4 SW1/4, SEC. 11, T. 13 S., R. 90 W., 6TH P.M., GUNNISON COUNTY, COLORADO



VESSELS COAL GAS, INC.-OXBOW MINING LLC #1

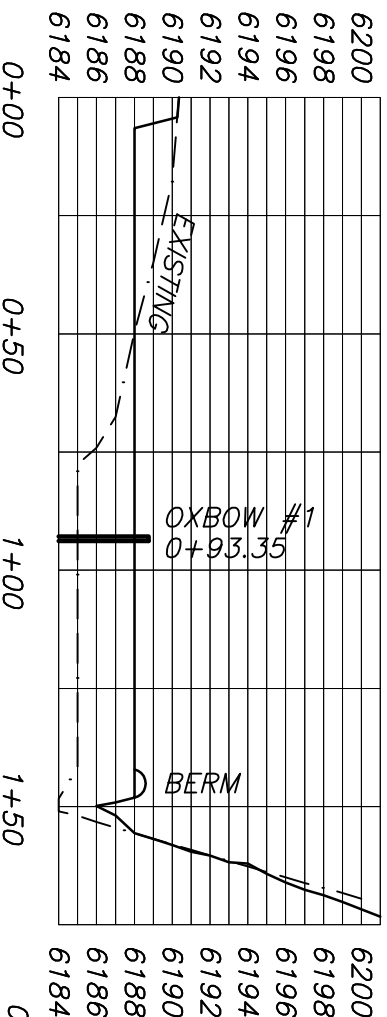
NE1/4 SW1/4, SEC. 11, T. 13 S., R. 90 W., 6TH P.M., GUNNISON COUNTY, COLORADO



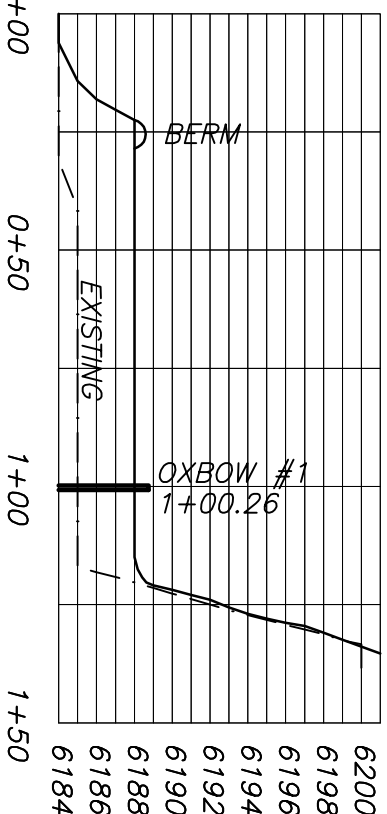
SURVEYOR'S CERTIFICATION
I, Randy A. Wilmore, do hereby certify that the above described parcel has been surveyed by me and under my direct supervision and that such survey is accurately represented hereon.

Date: _____ Signed: _____
COLORADO PROFESSIONAL LAND SURVEYOR #25972

A TO A'



B TO B'



NOTE: According to Colorado law any legal action based upon a defect in this survey must be commenced within two years from the date shown on the certification hereon. In no event may any action based upon a defect in this survey be commenced more than ten years from the date shown on the certification hereon.

Wilmore and Company
Professional Land Surveying, Inc.
4053 German Creek Drive, Poncha, Colorado 81448
Phone: (970) 527-4200 Fax: (970) 527-4202

FIELD CREW:
K.C.
DEPARTER:
K.C.
CHECKED BY:
RAW
SURVEYED:
AUG. 4, 2010

VESSELS COAL GAS, INC.
OXBOW MINING LLC #1
NE1/4 SW1/4 SEC. 11, T.13S., R.90W., 6TH P.M.
GUNNISON COUNTY, COLORADO

J10101

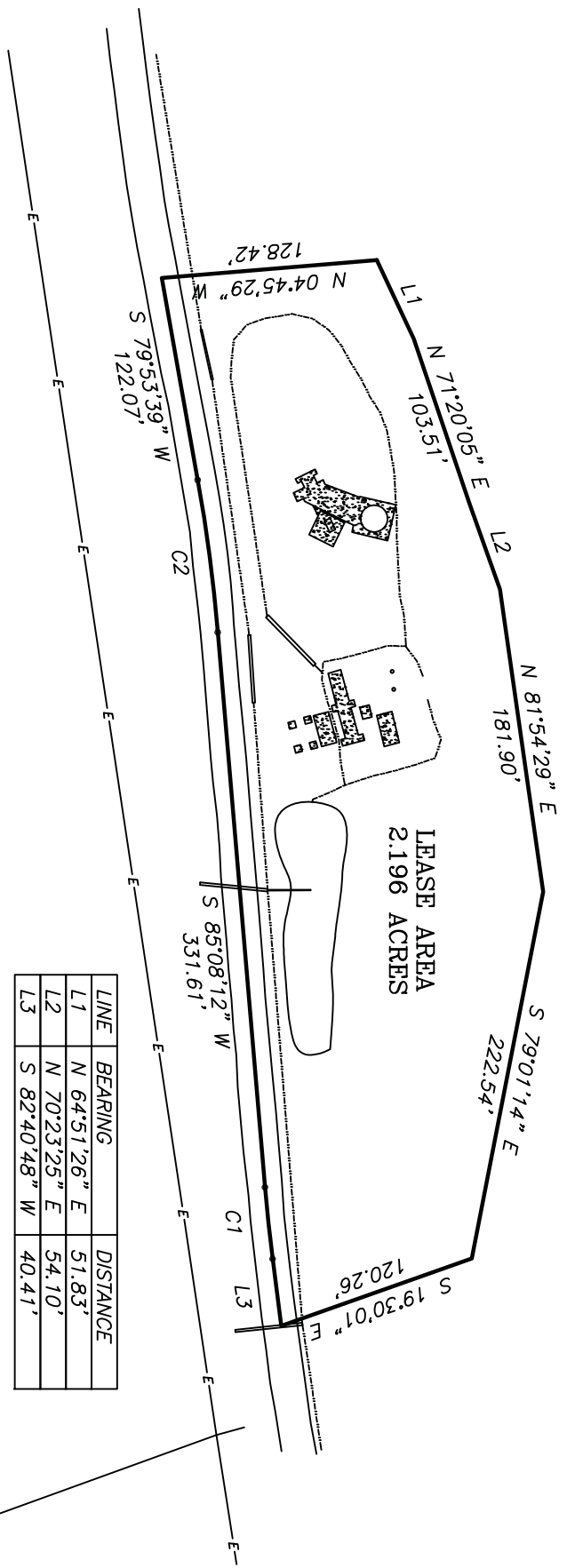
MAY 10, 2017

CROSS-SECTIONS

SCALE 1"=40'



VESSELS COAL GAS, INC.-OXBOW MINING LLC #1 NE1/4 SW1/4, SEC. 11, T. 13 S., R. 90 W., 6TH P.M., GUNNISON COUNTY, COLORADO



LINE	BEARING	DISTANCE
L1	N 64°51'26" E	51.83'
L2	N 70°23'25" E	54.10'
L3	S 82°40'48" W	40.41'

CURVE	RADIUS	ARC LENGTH	CHORD BEARING	CHORD LENGTH
C1	1000.00'	42.88'	S 83°54'30" W	42.87'
C2	1000.00'	91.50'	S 82°30'55" W	91.47'

SURVEYOR'S CERTIFICATION
 I, Randy A. Wilmore, do hereby certify that the above described parcel has been surveyed by me and under my direct supervision, and that such survey is accurately represented hereon.

Date: _____ Signed: _____
 COLORADO PROFESSIONAL LAND SURVEYOR #25972

WILMORE
 Professional Land Surveying, Inc.
 4053 German Creek Drive, Poncha, Colorado 81448
 Phone: (970) 527-4200 Fax: (970) 527-4202

FIELD CREW:
 KC
 DEPARTER:
 KC
 CHECKED BY:
 RAW
 SURVEYED:
 AUG. 4, 2010

VESELS COAL GAS, INC.
OXBOW MINING LLC #1
NE1/4 SW1/4 SEC. 11, T.13S., R.90W., 6TH P.M.
GUNNISON COUNTY, COLORADO

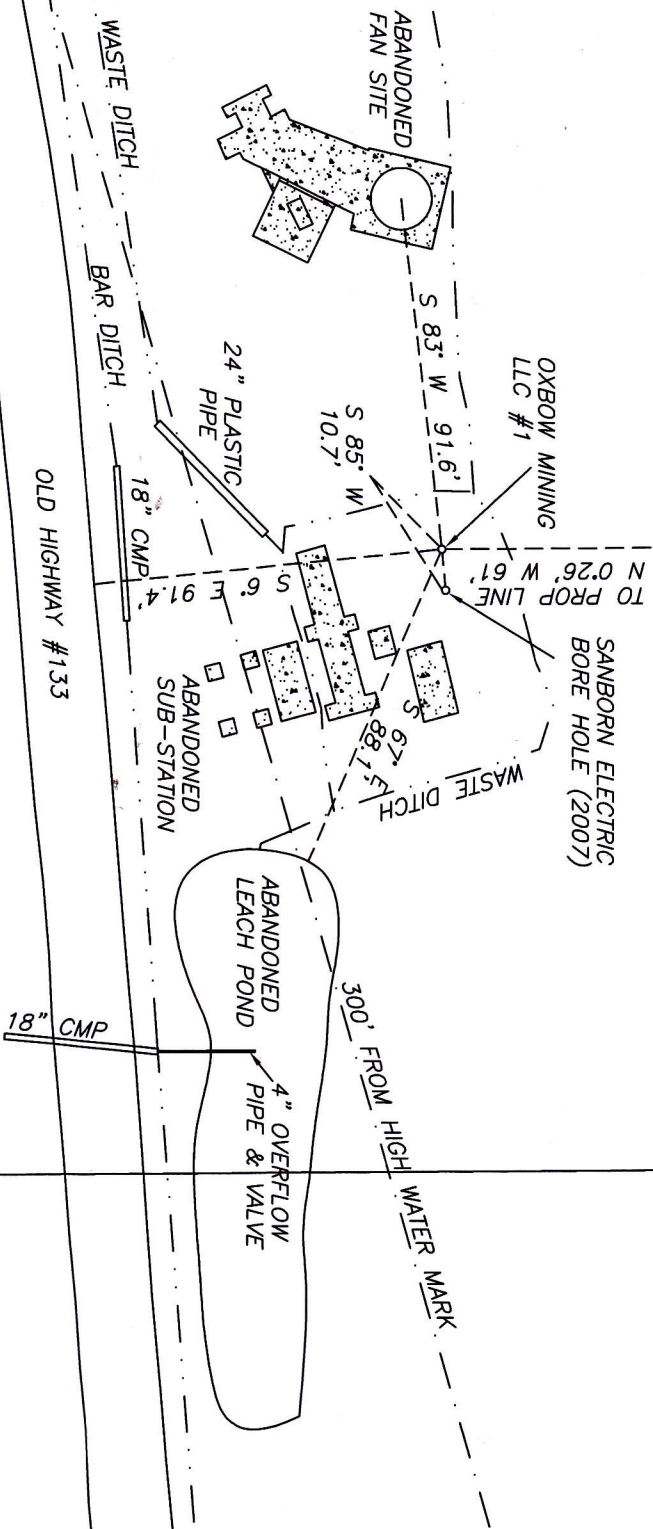
J10101
APRIL 26, 2011
LEASE AREA

SCALE 1"=100'

0 50 100

VESSELS COAL GAS, INC.-OXBOW MINING LLC #1

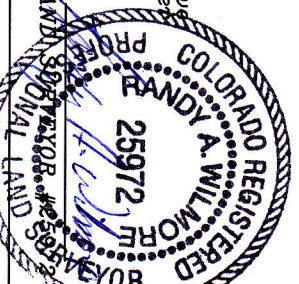
NE1/4 SW1/4, SEC. 11, T. 13 S., R. 90 W., 6TH P.M., GUNNISON COUNTY, COLORADO



- LEGEND**
- o PP Power Pole
 - E— Electric (overhead)
 - Edge river
 - Ditch
 - [Pattern] Concrete

SURVEYOR'S CERTIFICATION
 I, Randy A. Wilmore, do hereby certify that the above described parcel has been surveyed by me and under my direct supervision and that such survey is accurately represented hereon.

Date: 24 March 2011 Signed: Randy A. Wilmore
 COLORADO PROFESSIONAL LAND SURVEYOR #25972



**VESSELS COAL GAS, INC.
 OXBOW MINING LLC #1**
 NE1/4 SW1/4 SEC. 11, T. 13 S., R. 90 W., 6TH P.M.,
 GUNNISON COUNTY, COLORADO

W&C Wilmore and Company
Professional Land Surveying Inc.
 4053 German Creek Drive, Pueblo, Colorado 81428
 Phone: (970) 527-4200 Fax: (970) 527-4202

FIELD CREW:	KC
DRAWN:	KC
CHECKED BY:	RAW
SURVEYED:	AUG. 4, 2010

SCALE 1"=50'
 0 25 50