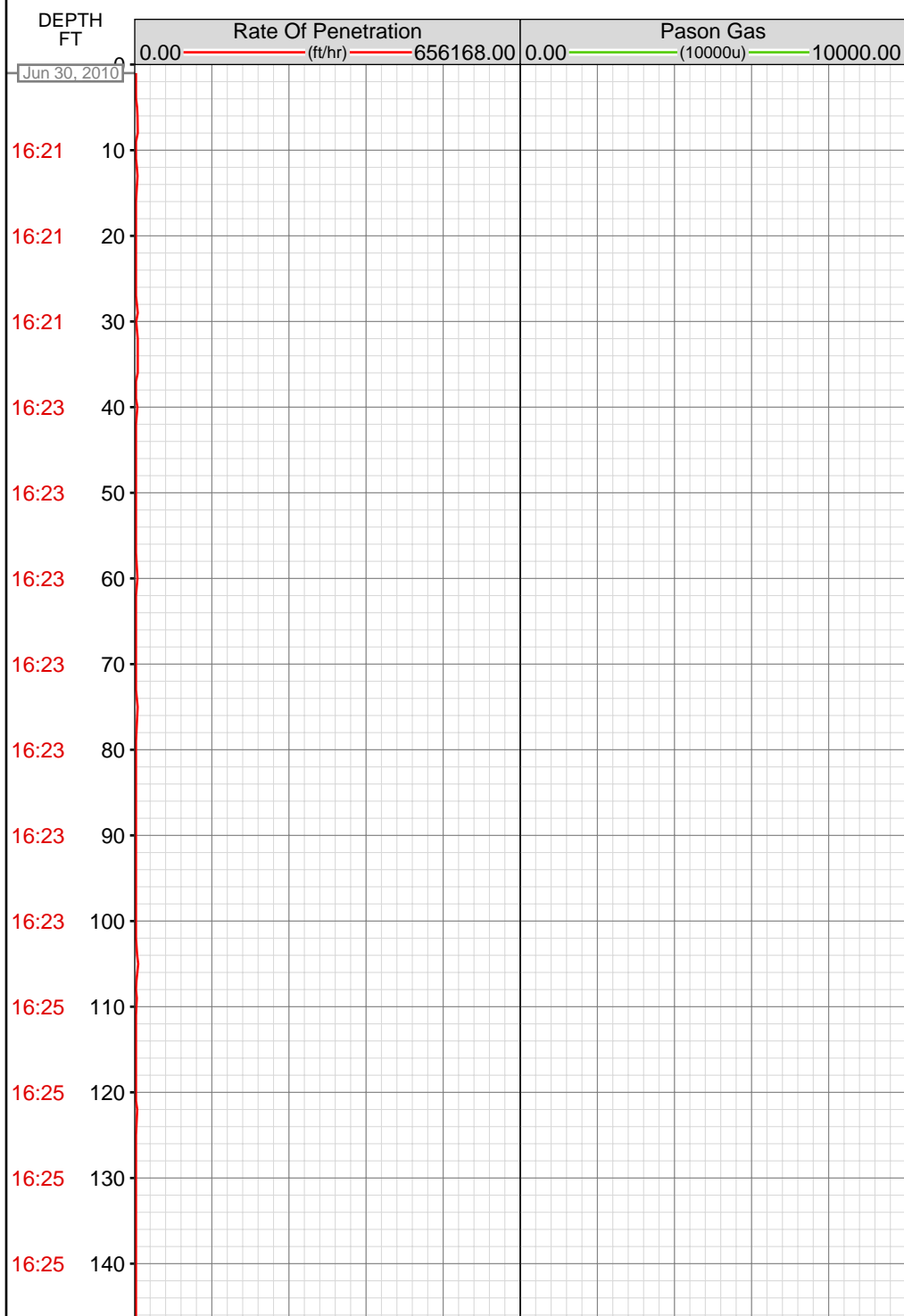


# DataHub EDR Log

Thu Jul 08, 2010 10:18:30  
Well Dossier 1277901507  
Marilyn Tucker

**OPERATOR:** EnCana Oil & Gas (USA), Inc.  
**WELL:** NP WF10A-21 K22 596  
**FIELD:**  
**LOCATION:** NESW SEC22 TWP5S R96W M6TH  
**COUNTRY:** USA  
**RIG:** Pat-UTI 303

**CONTRACTOR:** Patterson-UTI Drilling Company  
**UNIQUE WELL ID:** 05-045-18872-00  
**SPUD DATE:** Jun 30, 2010 18:00  
**RELEASE DATE:** Jul 06, 2010 19:00



## MEMOS

0.00imperial: HOLE DEPTH CHANGED TO 0.0  
FEET

16:25 150

16:25 160

16:25 170

16:25 180

16:25 190

16:27 200

16:27 210

16:27 220

16:27 230

16:27 240

16:27 250

16:27 260

16:27 270

16:27 280

16:29 290

16:29 300

16:29 310

16:29 320

16:29 330

16:29 340

16:29 350

16:29 360

16:29 370

16:30 380

16:30 390

16:30 400

16:30 410

16:30 420

16:31 430

16:31 440

16:31 450

16:31 460

16:32 470

16:32 480

16:32 490

16:32 500

16:32 510

16:32 520

16:32 530

16:32 540

16:32 550

16:32 560

16:34 570

16:34 580

16:34 590

16:34 600

16:34 610

16:34 620

16:34 630

16:34 640

16:34 650

16:36 660

16:36 670

16:36 680

16:36 690

16:36 700

16:36 710

16:36 720

16:36 730

16:36 740

16:37 750

16:37 760

16:38 770

16:38 780

16:38 790

16:38 800

16:38 810

16:38 820

16:38 830

16:45 840

16:45 850

16:48 860

16:48 870

16:48 880

16:48 890

16:48 900

16:48 910

16:48 920

16:49 930

16:49 940

16:49 950

16:49 960

16:49 970

16:49 980

16:49 990

16:49 1000

16:49 1010

16:49 1020

16:51 1030

16:51 1040

16:51 1050

16:51 1060

16:51 1070

16:51 1080

16:51 1090

16:51 1100

16:51 1110

16:52 1120

16:52 1130

16:53 1140

16:53 1150

16:53 1160

16:53 1170

16:53 1180

16:53 1190

16:53 1200

17:06 1830

17:07 1840

17:07 1850

17:08 1860

1207.00imperial: BIT DEPTH CHANGED TO  
1834.0 FEET

1834.00imperial: HOLE DEPTH CHANGED TO  
1834.0 FEET

17:08 1870

17:08 1880

17:09 1890

17:10 1900

17:12 1910

17:13 1920

17:26 1930

17:28 1940

17:37 1950

18:02 1960

18:05 1970

18:09 1980

18:12 1990

18:28 2000

18:32 2010

23:23 2020

23:23 2030

23:23 2040

23:23 2050

23:23 2060

23:23 2070

23:23 2080

1871.00imperial: ZWOB from SideKick  
sk-06-03-3103  
1875.00imperial: ZDiffPressure from SideKick  
sk-06-03-3103

2082.00imperial: MUD VIS 45.00  
2082.00imperial: MUD WEIGHT 8.75

23:23 2090  
23:23 2100  
23:23 2110  
23:23 2120  
23:24 2130  
23:25 2140  
23:25 2150  
Jul 01, 2010  
00:28 2160  
00:30 2170  
00:34 2180  
00:38 2190  
00:41 2200  
00:44 2210  
00:52 2220  
00:55 2230  
00:57 2240  
00:59 2250  
01:01 2260  
01:04 2270  
01:07 2280  
01:10 2290  
01:13 2300

2108.00imperial: HOLE DEPTH CHANGED TO  
2108.0 FEET  
2108.00imperial: BIT DEPTH CHANGED TO  
2108.0 FEET  
2108.00imperial: ZWOB from SideKick  
sk-06-03-3103

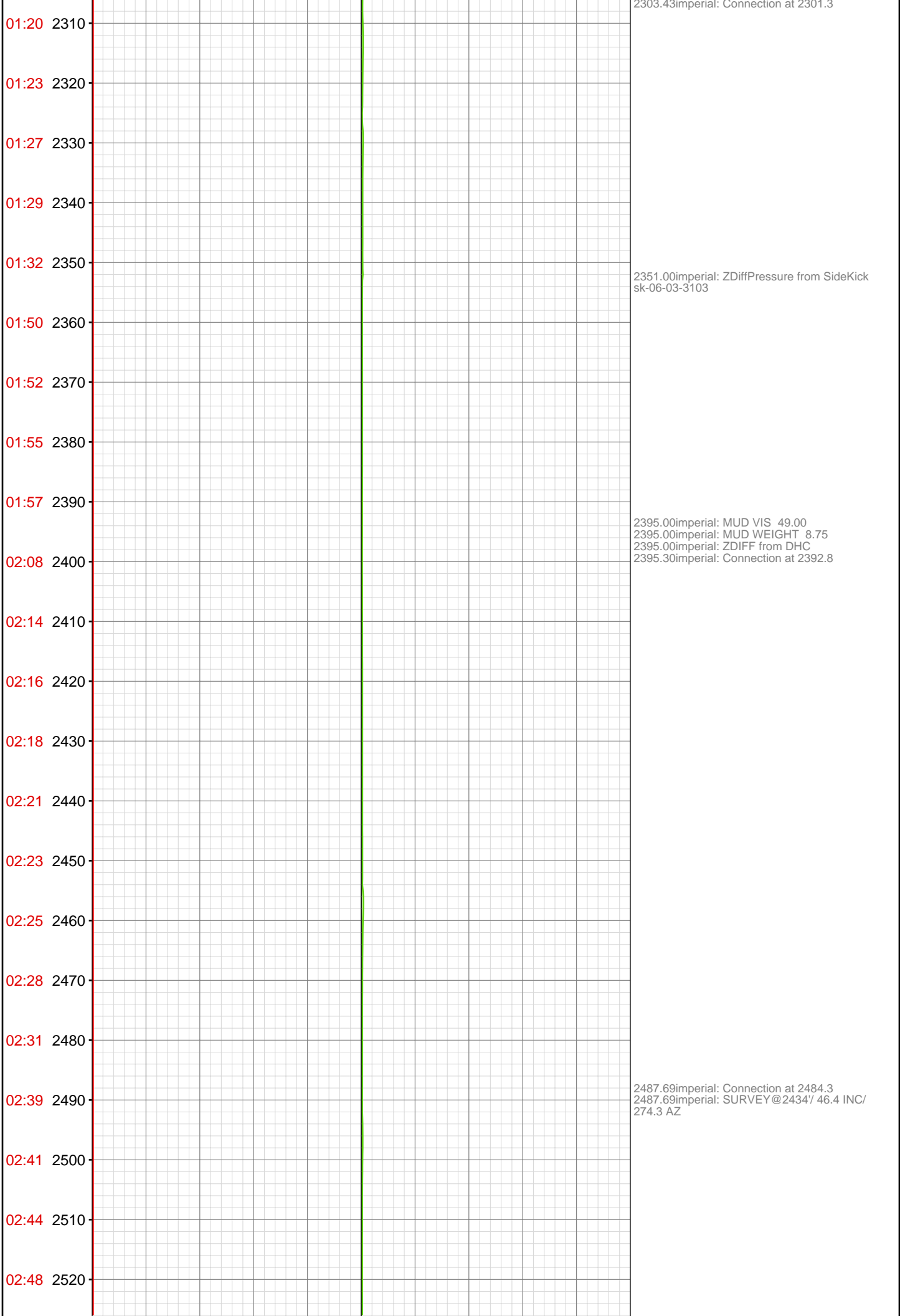
2119.41imperial: Connection at 2118.3  
2119.41imperial: SURVEY@2068'/ 46 INC/ 273.9  
AZ

2154.00imperial: HOLE DEPTH CHANGED TO  
2104.0 FEET  
2154.28imperial: PICKUP BHA #1

2211.00imperial: Connection at 2209.9  
2211.00imperial: SURVEY@2159'/ 46.5 INC/  
273.9 AZ

2303.43imperial: SURVEY@ 2251'/ 46.9 INC/  
273.4 AZ





02:50 2530  
02:54 2540  
02:56 2550  
02:59 2560  
03:02 2570  
03:04 2580  
03:18 2590  
03:22 2600  
03:25 2610  
03:28 2620  
03:30 2630  
03:33 2640  
03:36 2650  
03:38 2660  
03:41 2670  
03:54 2680  
03:57 2690  
03:59 2700  
04:02 2710  
04:04 2720  
04:07 2730  
04:09 2740

2580.00imperial: ZERO ALL PUMPS from  
SideKick sk-06-03-3103  
2580.00imperial: MUD VIS 50.00  
2580.01imperial: Connection at 2575.9  
2580.01imperial: SURVEY@2525/46.8 INC/ 273.2  
AZ  
2580.01imperial: MUD WEIGHT 8.75  
2589.00imperial: IN TALLY: HOLE DEPTH SET  
TO 2026.8  
2589.00imperial: ZWOB from SideKick  
sk-06-03-3103  
2589.00imperial: ZDiffPressure from SideKick  
sk-06-03-3103

2672.57imperial: Connection at 2667.3  
2672.57imperial: SURVEY@2617/ 45.6 INC/  
275.1 AZ/ 2242.1 TVD

04:12 2750

04:15 2760

04:25 2770

04:28 2780

04:30 2790

04:33 2800

04:35 2810

04:38 2820

04:41 2830

04:44 2840

04:47 2850

05:01 2860

05:09 2870

05:12 2880

05:15 2890

05:17 2900

05:20 2910

05:22 2920

05:25 2930

05:28 2940

05:37 2950

05:39 2960

2758.81imperial: Connection at 2758.8  
2758.81imperial: SURVEY@2708'/ 45.5 INC/  
274.5 AZ  
2761.00imperial: MUD VIS 52.00  
2761.00imperial: MUD WEIGHT 8.85  
2765.00imperial: IN TALLY: HOLE DEPTH SET  
TO 2758.8

2851.05imperial: SURVEY@2800'/ 45.0 INC/  
274.8 AZ

2866.17imperial: BOP DRILL

2879.00imperial: MUD VIS 49.00  
2879.00imperial: MUD WEIGHT 8.90

2940.20imperial: Connection at 2941.7  
2943.32imperial: SURVEY@2891'/ 46.1 INC/  
275.5 AZ/2434.35 TVD

05:42 2970

05:45 2980

05:47 2990

05:50 3000

05:53 3010

05:56 3020

05:59 3030

06:08 3040

3035.66imperial: Connection at 3032.9  
3037.45imperial: SURVEY @ 2982 INC 46 AZI  
275.1 TVD 2497.51

3043.63imperial: ROTATING

06:12 3050

06:17 3060

3062.00imperial: ZWOB from DHC  
3062.50imperial: SIMOPS DRILL

06:36 3070

06:38 3080

06:40 3090

06:43 3100

06:45 3110

06:48 3120

3121.33imperial: Connection at 3124.3  
3121.33imperial: SURVEY @ 3074 INC 45.9 AZI  
274.5 TVD 2561.47  
3121.56imperial: ROTATING  
3127.00imperial: MUD VIS 53.00  
3128.00imperial: MUD WEIGHT 8.90

06:56 3130

06:58 3140

07:00 3150

07:03 3160

07:05 3170

07:10 3180

07:12 3190  
07:14 3200  
07:17 3210  
07:25 3220  
07:29 3230  
07:34 3240  
07:37 3250  
07:39 3260  
07:42 3270  
07:44 3280  
07:46 3290  
07:48 3300  
07:56 3310  
07:58 3320  
08:00 3330  
08:03 3340  
08:05 3350  
08:07 3360  
08:10 3370  
08:13 3380  
08:16 3390  
08:24 3400

3213.99imperial: Connection at 3215.7  
3213.99imperial: SURVEY @ 3165 INC 45.2 AZI  
273.4  
3213.99imperial: SLIDING

3260.60imperial: ROTATING

3302.00imperial: ZWOB from SideKick  
sk-06-03-3103  
3302.66imperial: Connection at 3307.3  
3304.76imperial: SURVEY @ 3257 INC 46.9 AZI  
273.4 ROTATING

3395.01imperial: MUD WEIGHT 8.95  
3395.05imperial: SURVEY @ 3348 INC 46.1 AZI  
273 TVD 2751.69 Connection at 3398.7  
3395.05imperial: MUD VIS 54.00  
3395.05imperial: ROTATING

08:26 3410

08:29 3420

08:32 3430

08:34 3440

08:36 3450

08:39 3460

08:41 3470

08:44 3480

08:51 3490

08:55 3500

09:00 3510

09:04 3520

09:06 3530

09:09 3540

09:11 3550

09:13 3560

09:16 3570

09:24 3580

09:28 3590

09:32 3600

09:35 3610

09:37 3620

3487.99imperial: Connection at 3490.0  
3487.99imperial: SURVEY @ 3440 INC 45.7 AZI  
273.0  
3487.99imperial: SLIDING

3516.44imperial: ROTATING

3576.54imperial: Connection at 3581.6  
3576.54imperial: SURVEY @ 3531 INC 49.5 AZI  
272.9 SLIDING

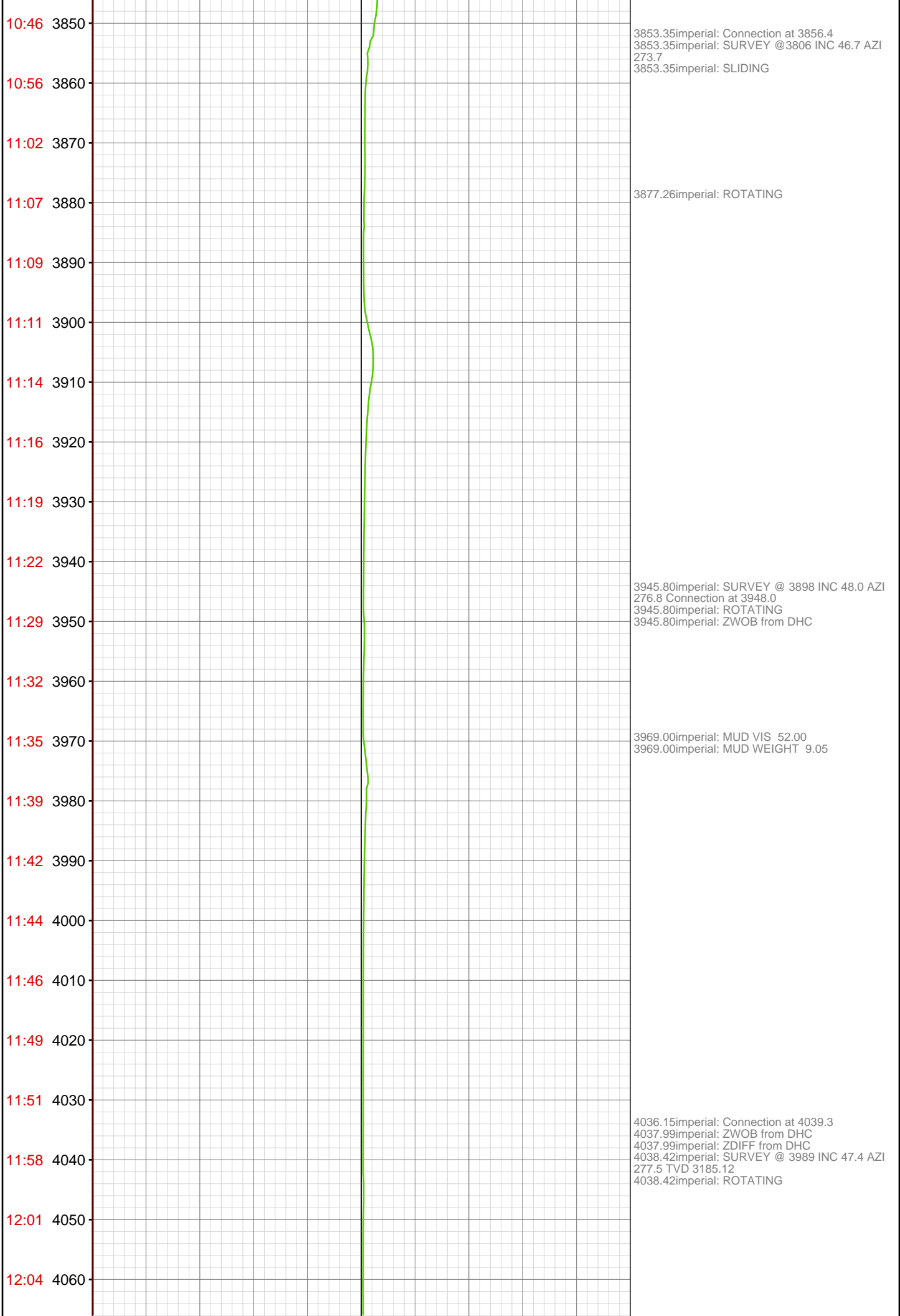
3603.41imperial: ROTATING

09:39 3630  
09:42 3640  
09:44 3650  
09:46 3660  
09:54 3670  
09:57 3680  
09:59 3690  
10:02 3700  
10:05 3710  
10:07 3720  
10:10 3730  
10:12 3740  
10:14 3750  
10:17 3760  
10:23 3770  
10:26 3780  
10:29 3790  
10:31 3800  
10:34 3810  
10:37 3820  
10:40 3830  
10:43 3840

3668.01imperial: ZWOB from DHC  
3668.57imperial: Connection at 3673.2  
3668.57imperial: SURVEY @ 3623 INC 48.2 AZI  
274.6 ROTATING  
3668.57imperial: ZDIFF from DHC

3725.00imperial: MUD VIS 58.00  
3725.98imperial: MUD WEIGHT 9.15

3760.86imperial: Connection at 3764.9  
3760.86imperial: SURVEY @ 3714 INC 47.3 AZI  
273 TVD 2998.79  
3760.86imperial: ROTATING



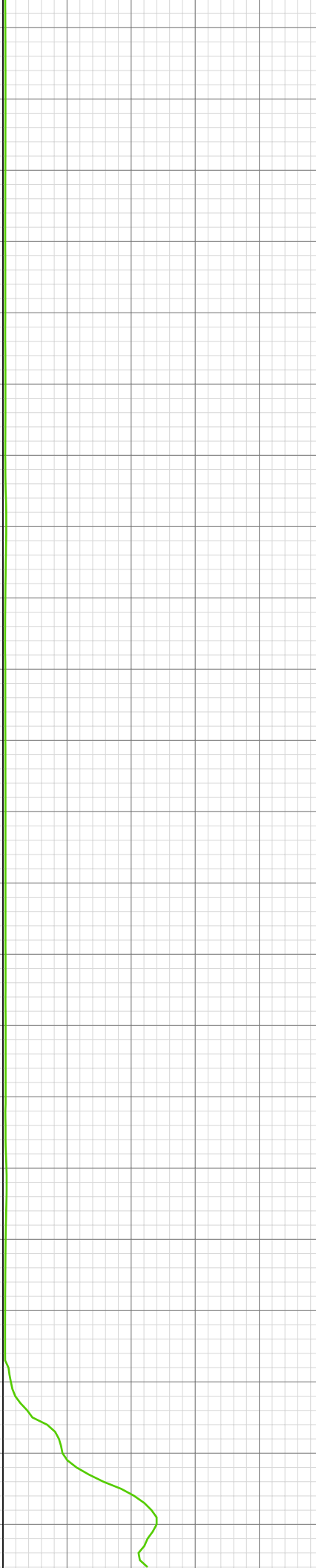


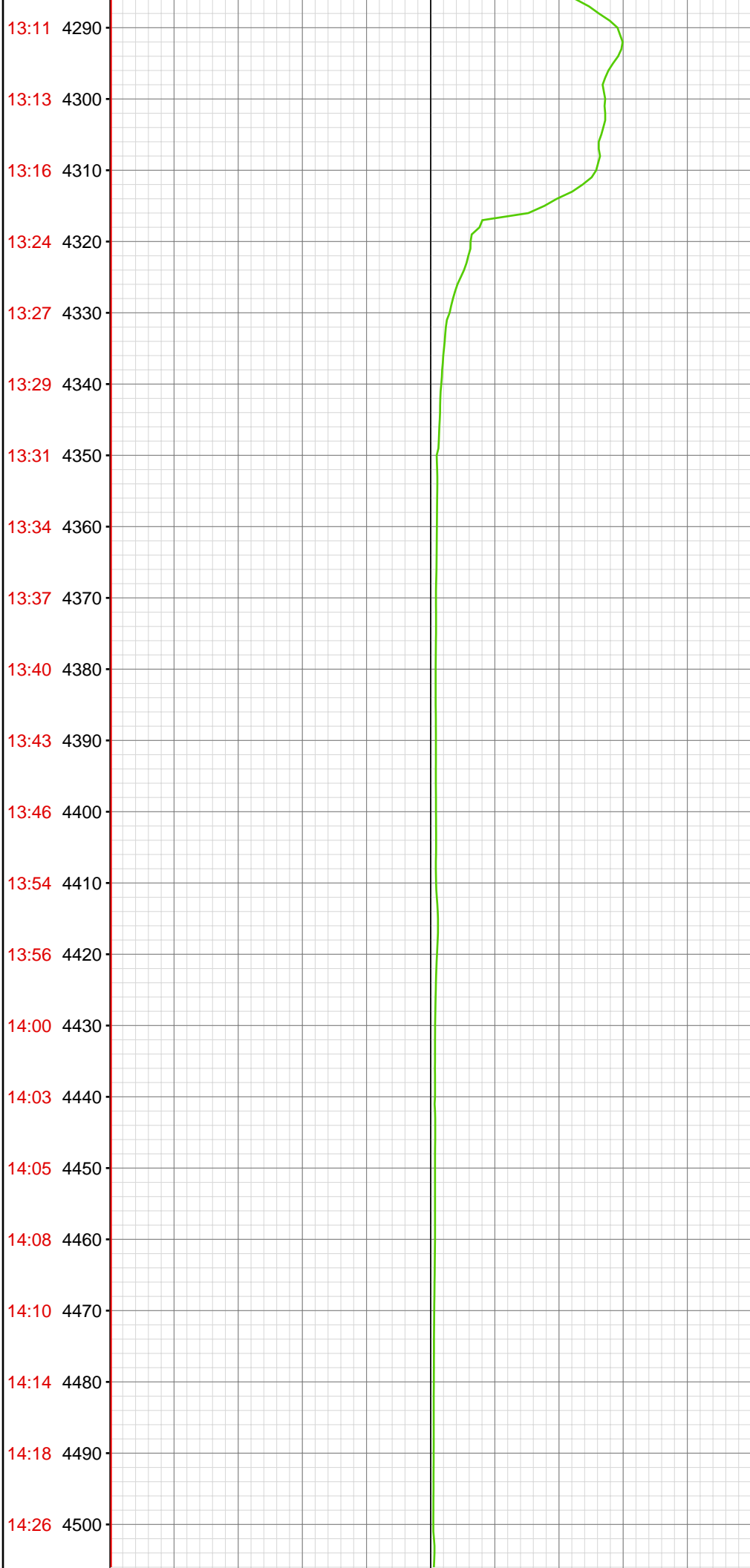
12:06 4070  
12:08 4080  
12:10 4090  
12:12 4100  
12:15 4110  
12:17 4120  
12:24 4130  
12:26 4140  
12:28 4150  
12:32 4160  
12:35 4170  
12:38 4180  
12:40 4190  
12:42 4200  
12:44 4210  
12:46 4220  
12:53 4230  
12:56 4240  
12:58 4250  
13:01 4260  
13:04 4270  
13:08 4280

4130.74imperial: Connection at 4130.9  
4130.74imperial: ROTATING SURVEY @ 4080  
INC 47.2 AZI 276.1 TVD 3246.83

4223.00imperial: ZDIFF from DHC  
4223.03imperial: SURVEY @ 4172 INC 45.8 AZI  
276.5 TVD 3310.16 Connection at 4222.5  
4223.03imperial: ROTATING  
4223.03imperial: ZWOB from DHC

4248.00imperial: MUD WEIGHT 8.90  
4248.59imperial: MUD VIS 49.00

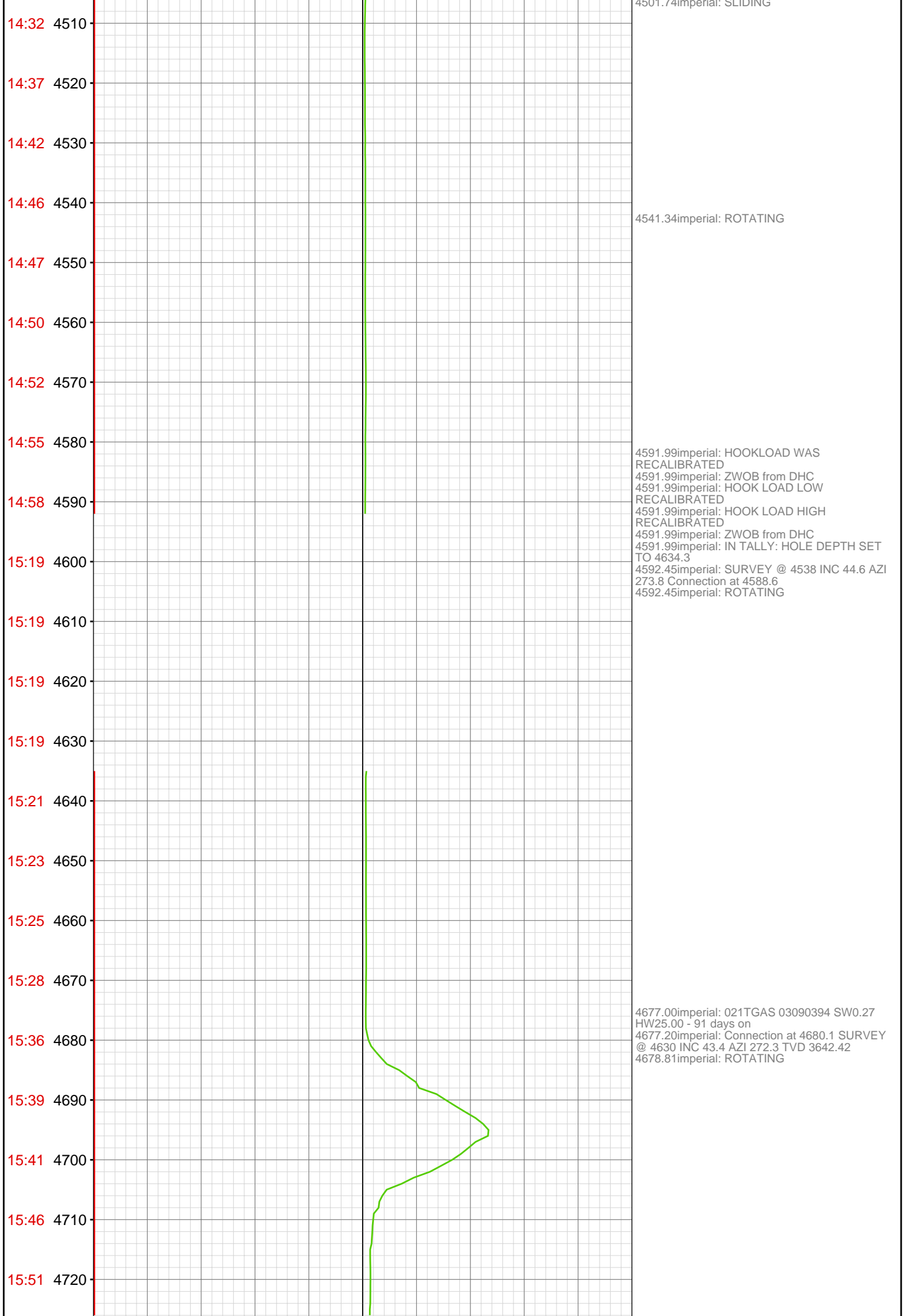


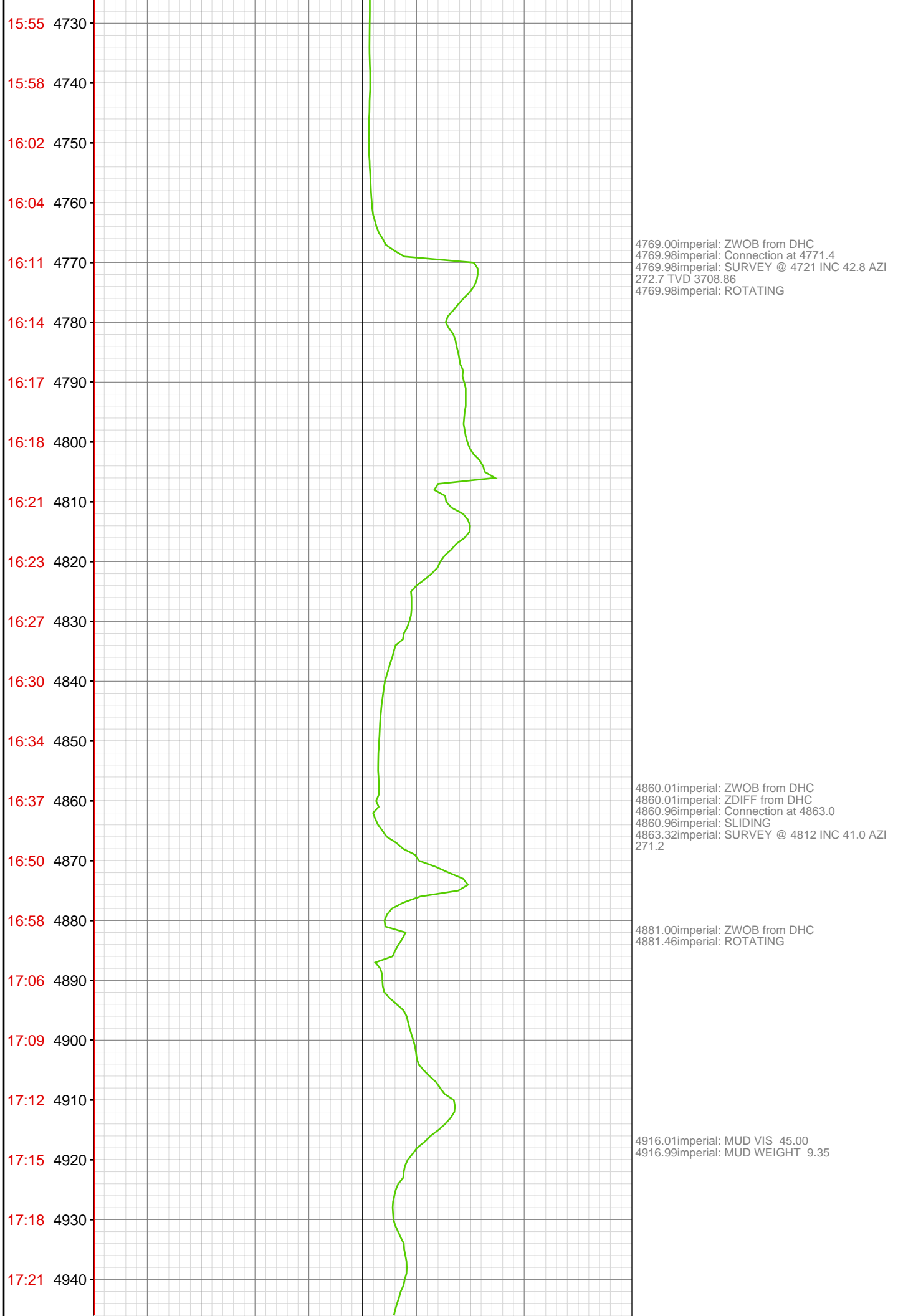


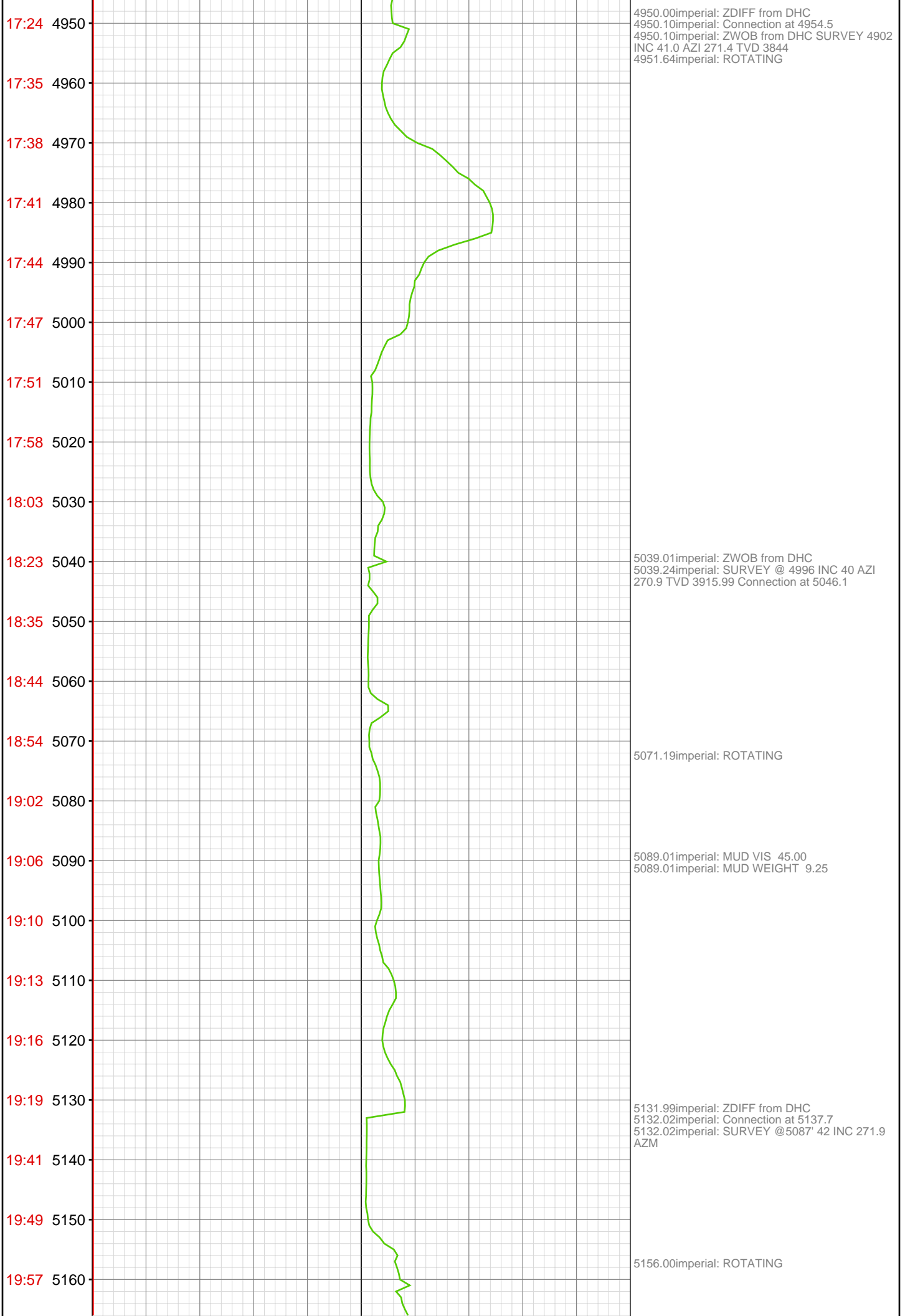
4314.99imperial: ZWOB from DHC  
4315.19imperial: Connection at 4314.0  
4315.19imperial: SURVEY @ 4264 INC 44.2 AZI  
276.3 TVD 3375.21  
4315.19imperial: ROTATING

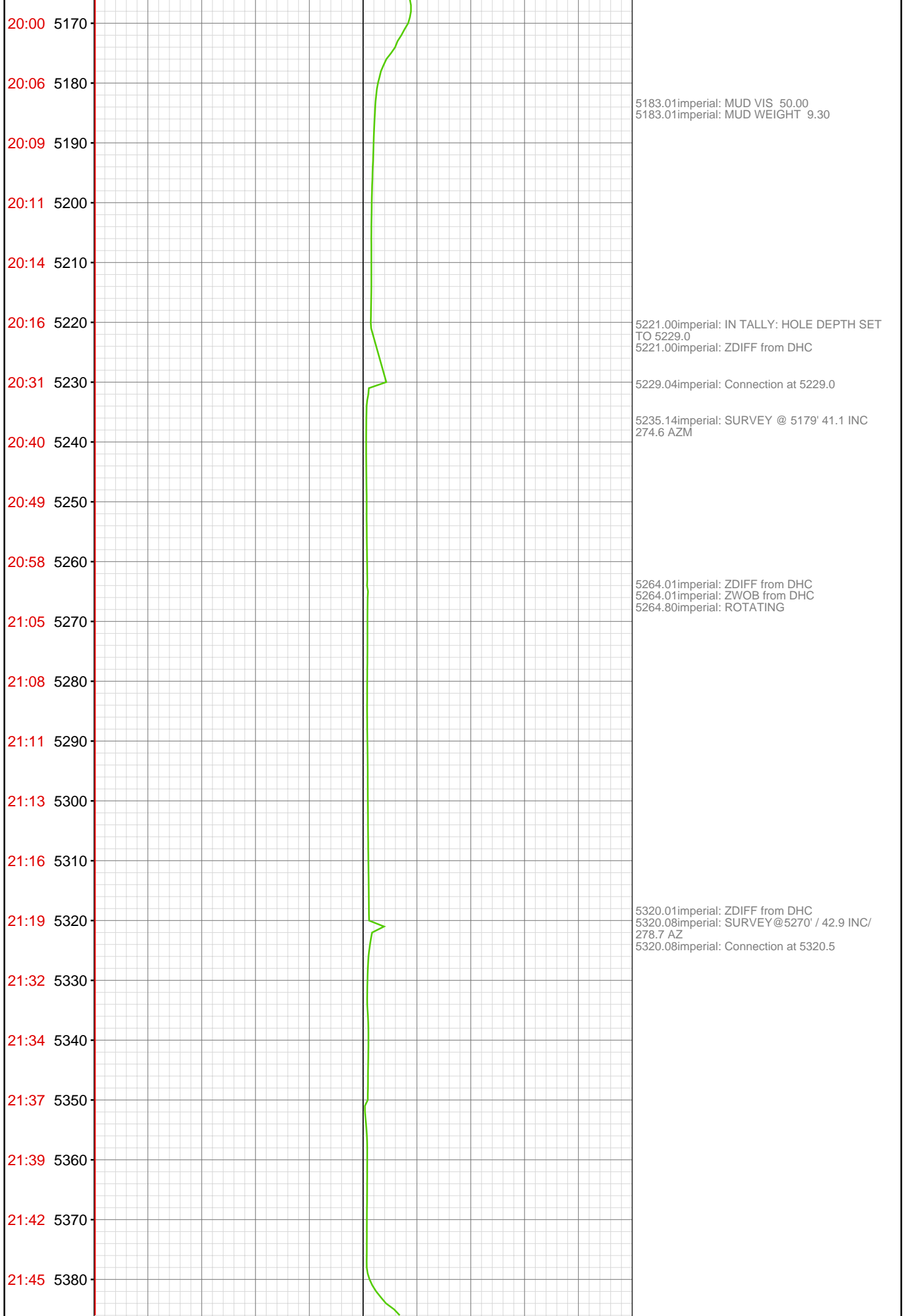
4406.99imperial: ZWOB from DHC  
4406.99imperial: ZDIFF from DHC  
4407.35imperial: SURVEY @ 4355 INC 42.9 AZI  
276 TVD 3441.16 Connection at 4405.6  
4407.35imperial: ROTATING

4499.02imperial: MUD VIS 51.00  
4499.02imperial: MUD WEIGHT 9.00  
4499.84imperial: Connection at 4497.1  
4499.84imperial: SURVEY @ 4447 INC 41.1 AZI  
275.7









21:48 5390

21:51 5400

21:54 5410

22:10 5420

22:12 5430

22:15 5440

22:18 5450

22:21 5460

22:24 5470

22:27 5480

22:30 5490

22:32 5500

22:43 5510

22:46 5520

22:49 5530

22:52 5540

22:55 5550

22:57 5560

23:00 5570

23:03 5580

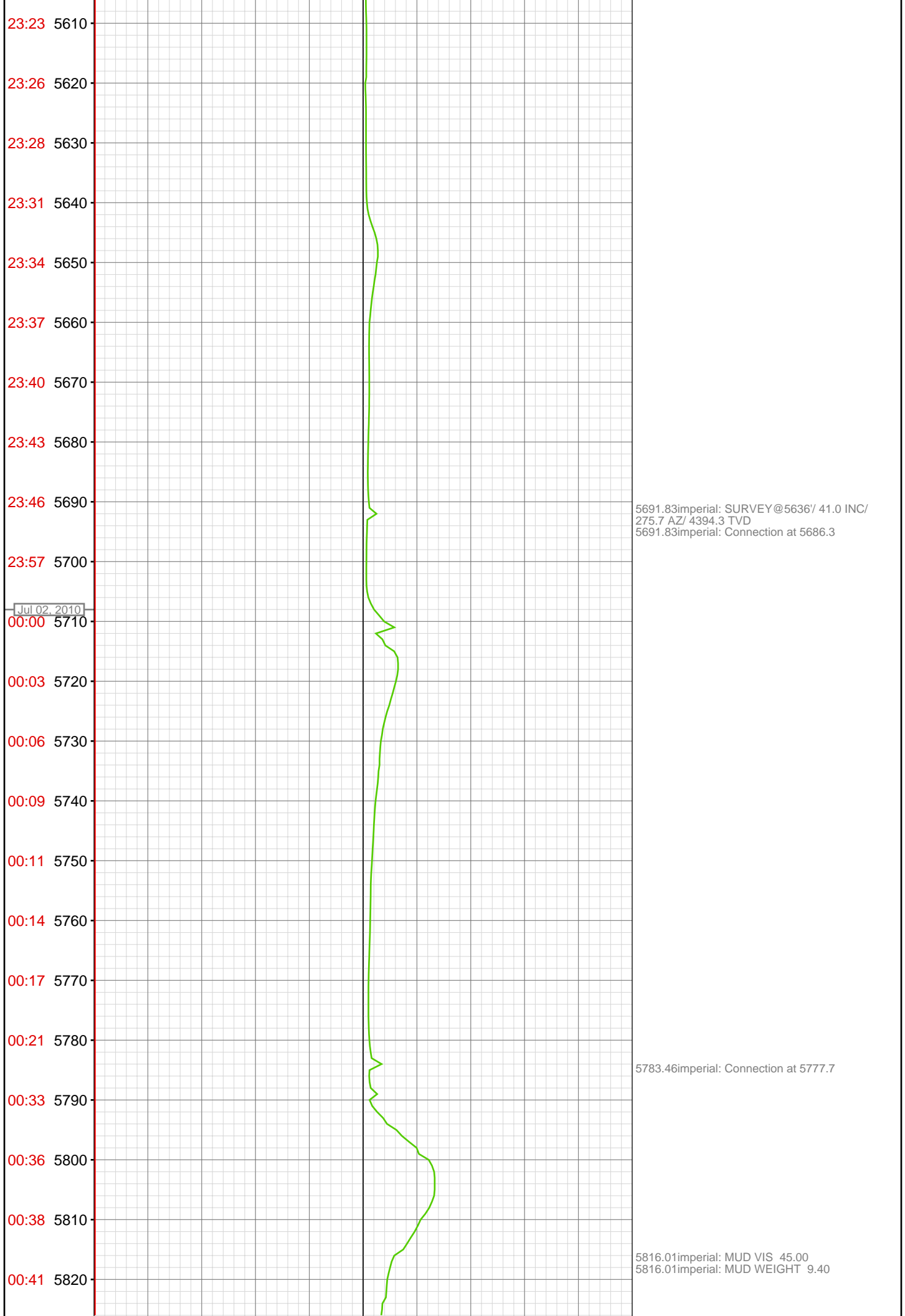
23:06 5590

23:20 5600

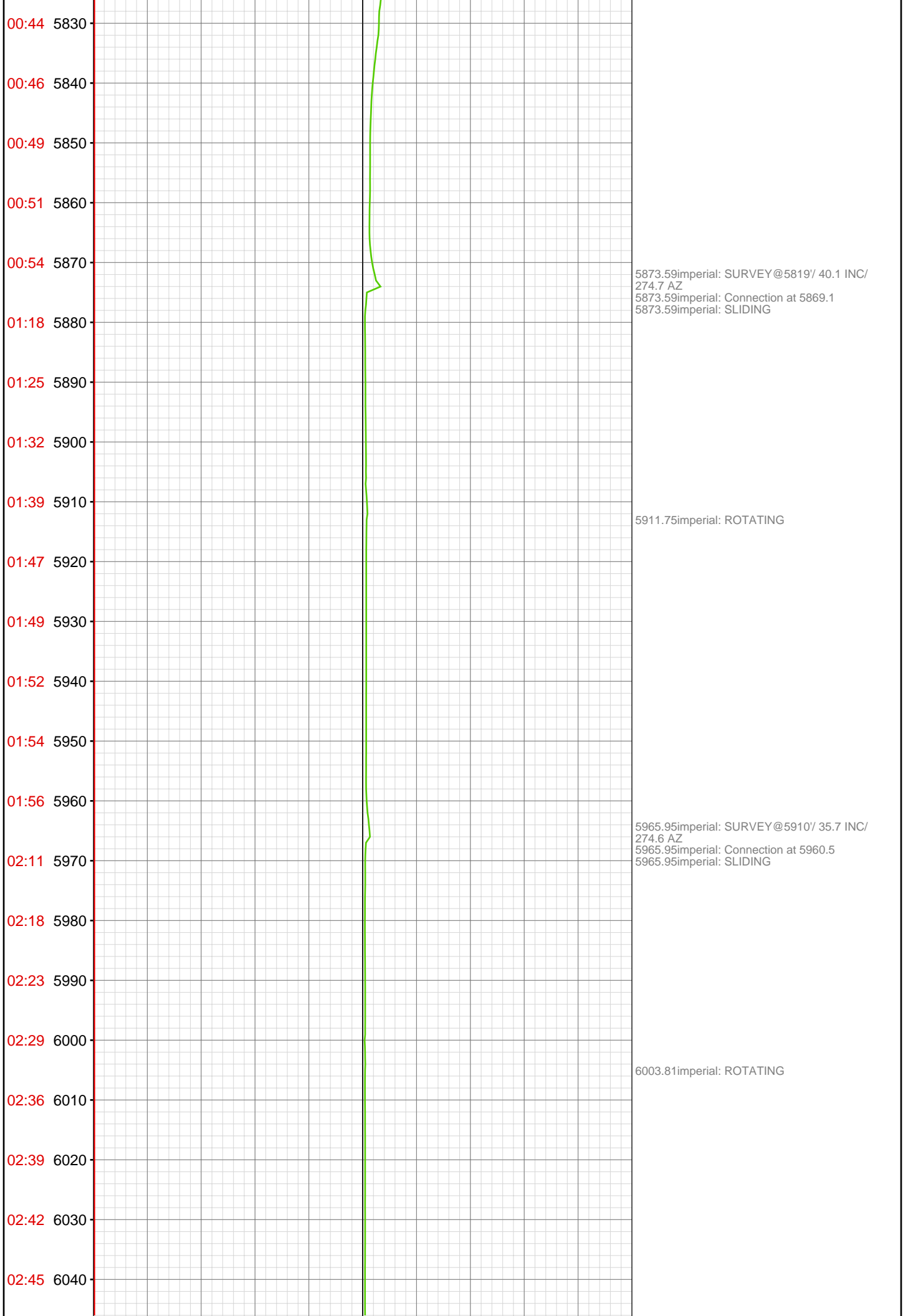
5412.01imperial: MUD VIS 51.00  
5412.01imperial: MUD WEIGHT 9.35  
5412.34imperial: SURVEY@5361'/ 42.1 INC/  
278.7 AZ  
5412.34imperial: Connection at 5411.9

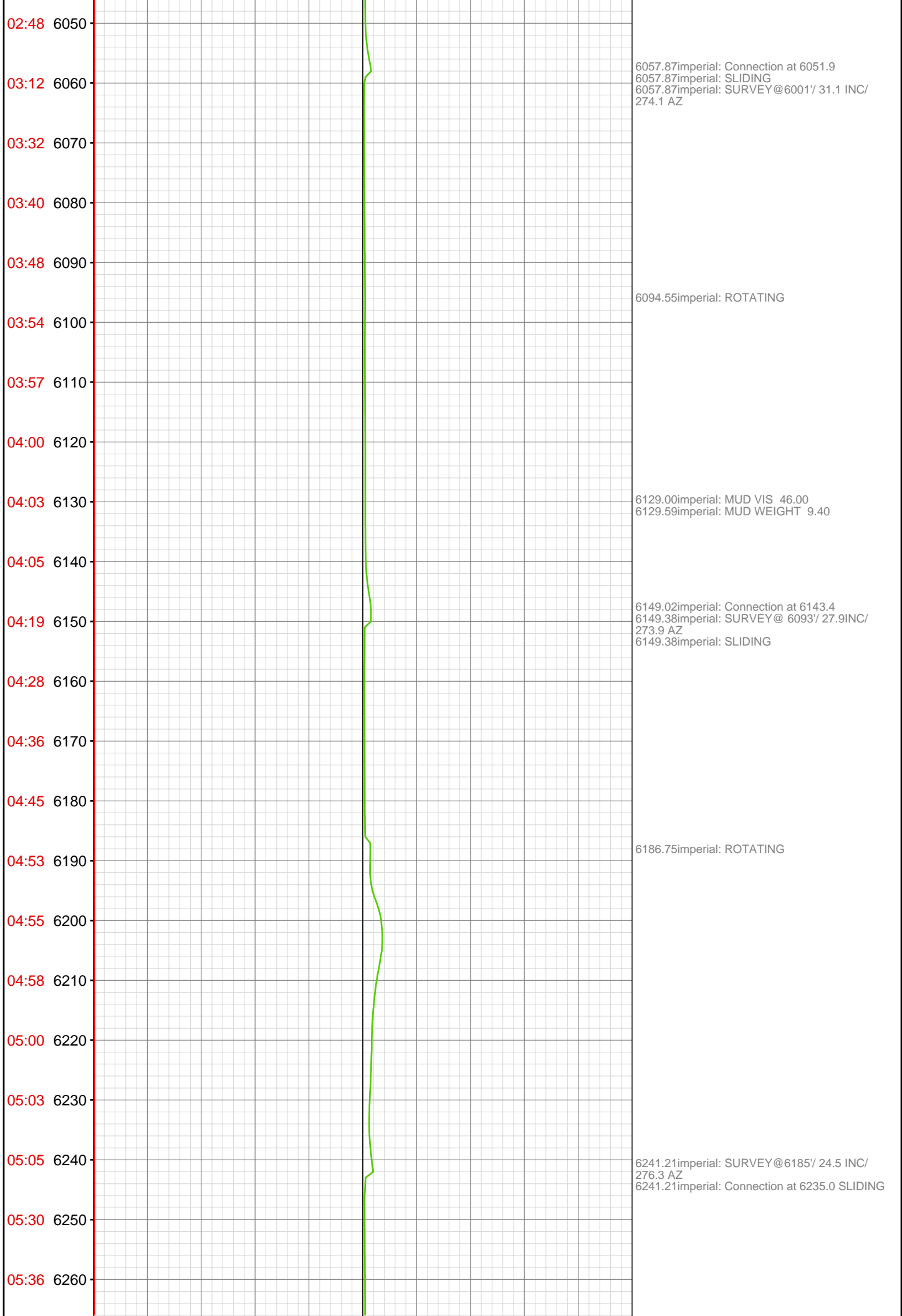
5505.81imperial: SURVEY@5453'/ 41.6 INC/  
278.2 AZ/ 4256.8 TVD  
5505.81imperial: Connection at 5503.4

5598.95imperial: Connection at 5594.9  
5598.95imperial: SURVEY@5544'/ 41.3 INC/  
276.1 AZ









05:43 6270  
05:50 6280  
05:55 6290  
05:57 6300  
06:00 6310  
06:02 6320  
06:22 6330  
06:31 6340  
06:36 6350  
06:41 6360  
06:45 6370  
06:51 6380  
06:55 6390  
07:00 6400  
07:03 6410  
07:20 6420  
07:27 6430  
07:33 6440  
07:38 6450  
07:43 6460  
07:54 6470  
08:03 6480

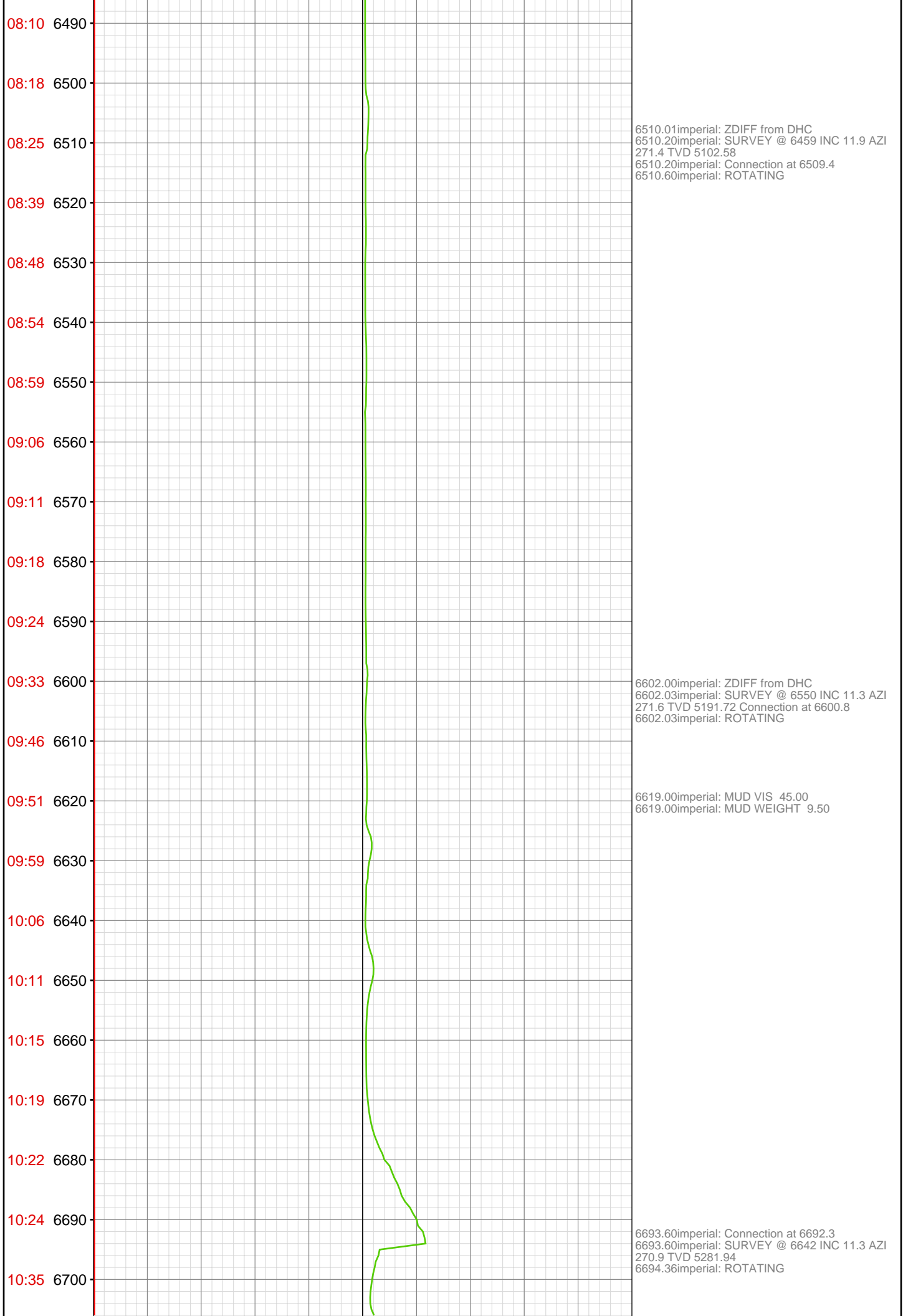
6326.61imperial: IN TALLY: HOLE DEPTH SET  
TO 6326.5  
6327.43imperial: SURVEY @ 6276 INC 20.8 AZI  
271.6  
6332.91imperial: SLIDING  
6334.38imperial: Connection at 6326.5

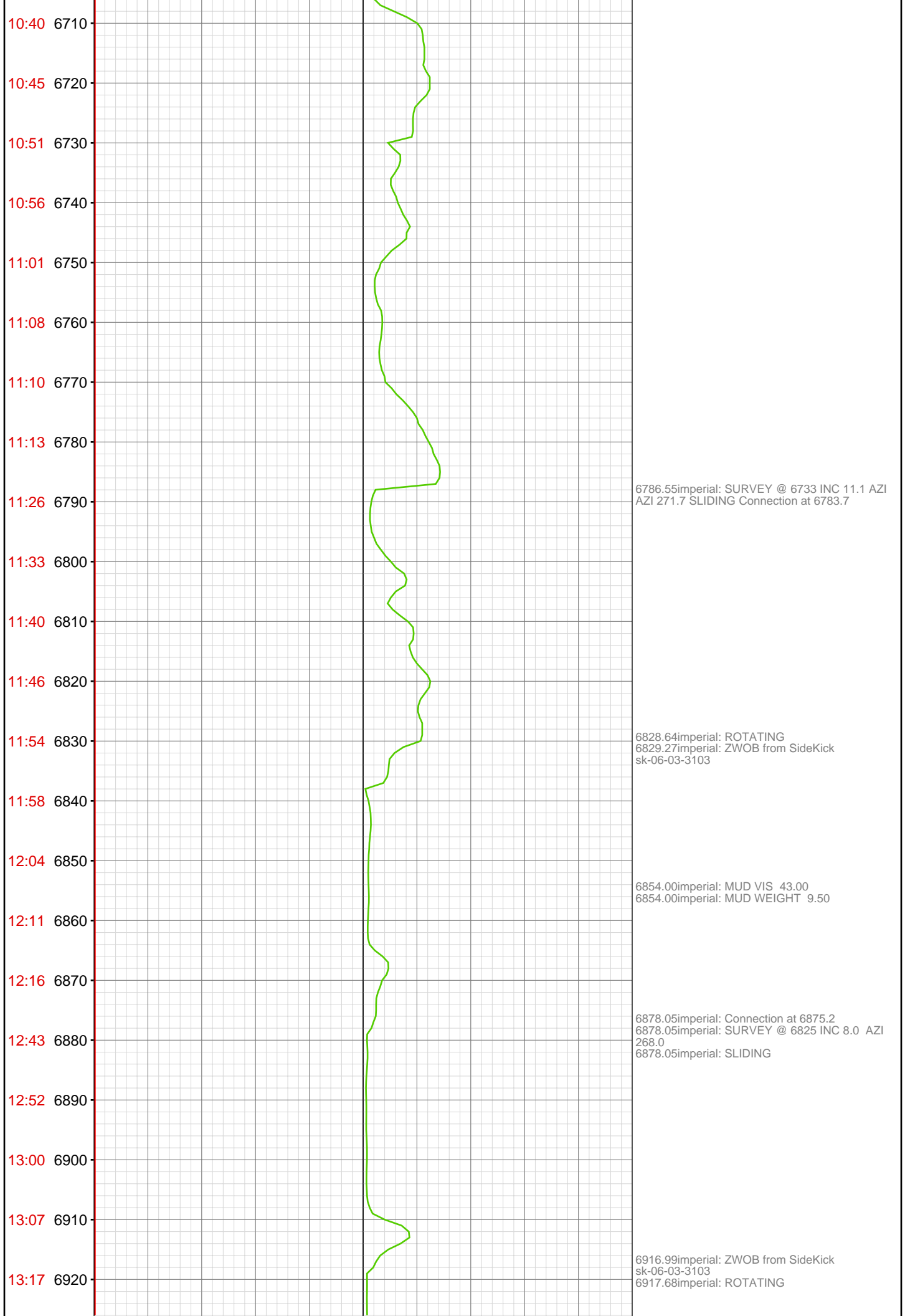
6345.01imperial: MUD VIS 44.00  
6345.01imperial: MUD WEIGHT 9.40

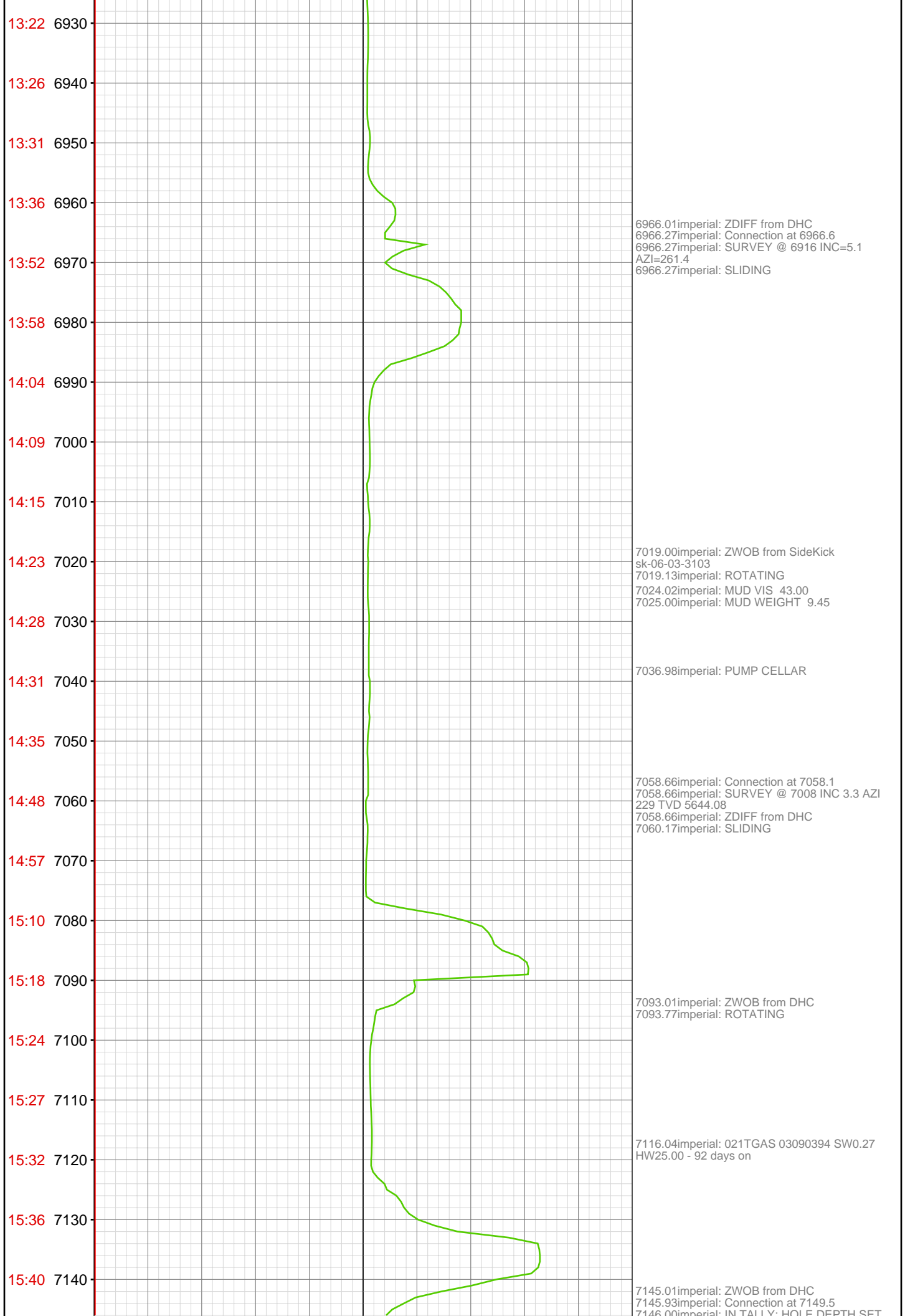
6372.44imperial: ROTATING

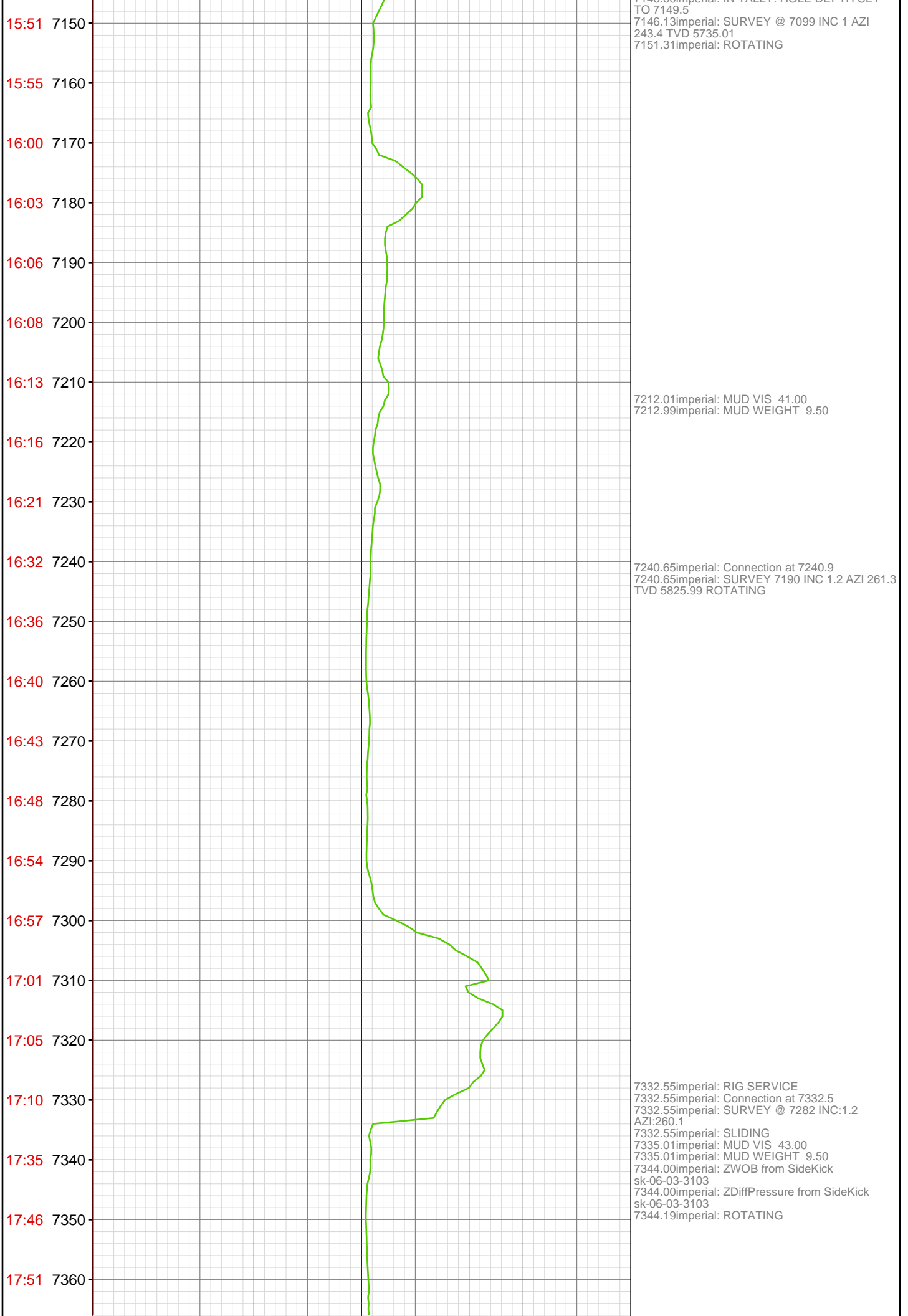
6416.73imperial: Connection at 6417.9  
6416.73imperial: SLIDING

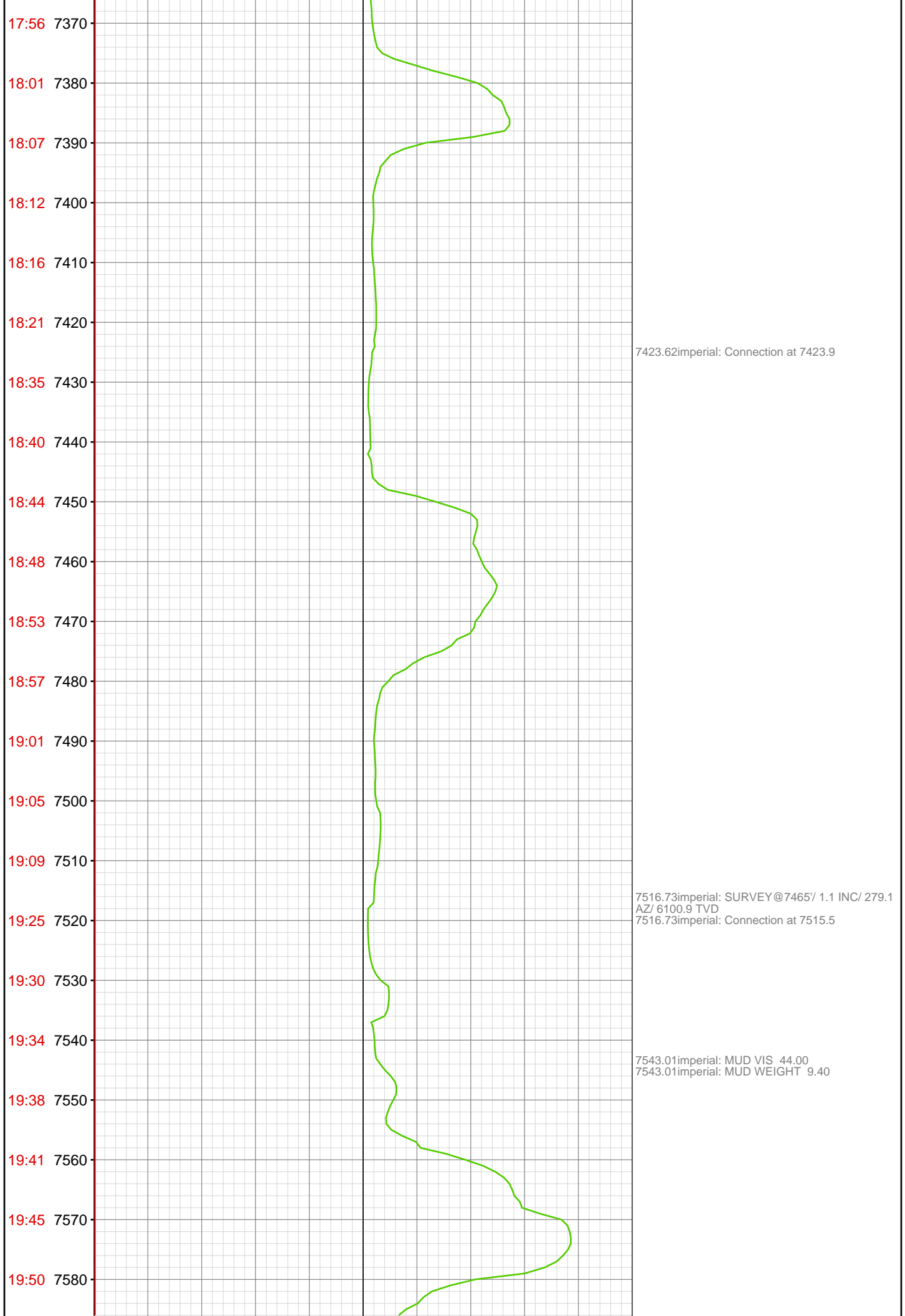
6464.99imperial: ZWOB from SideKick  
sk-06-03-3103  
6465.26imperial: ROTATING  
6465.58imperial: SLOW DOWN FOR  
FORMATION CHANGE  
6471.00imperial: MUD VIS 45.00  
6471.00imperial: MUD WEIGHT 9.50



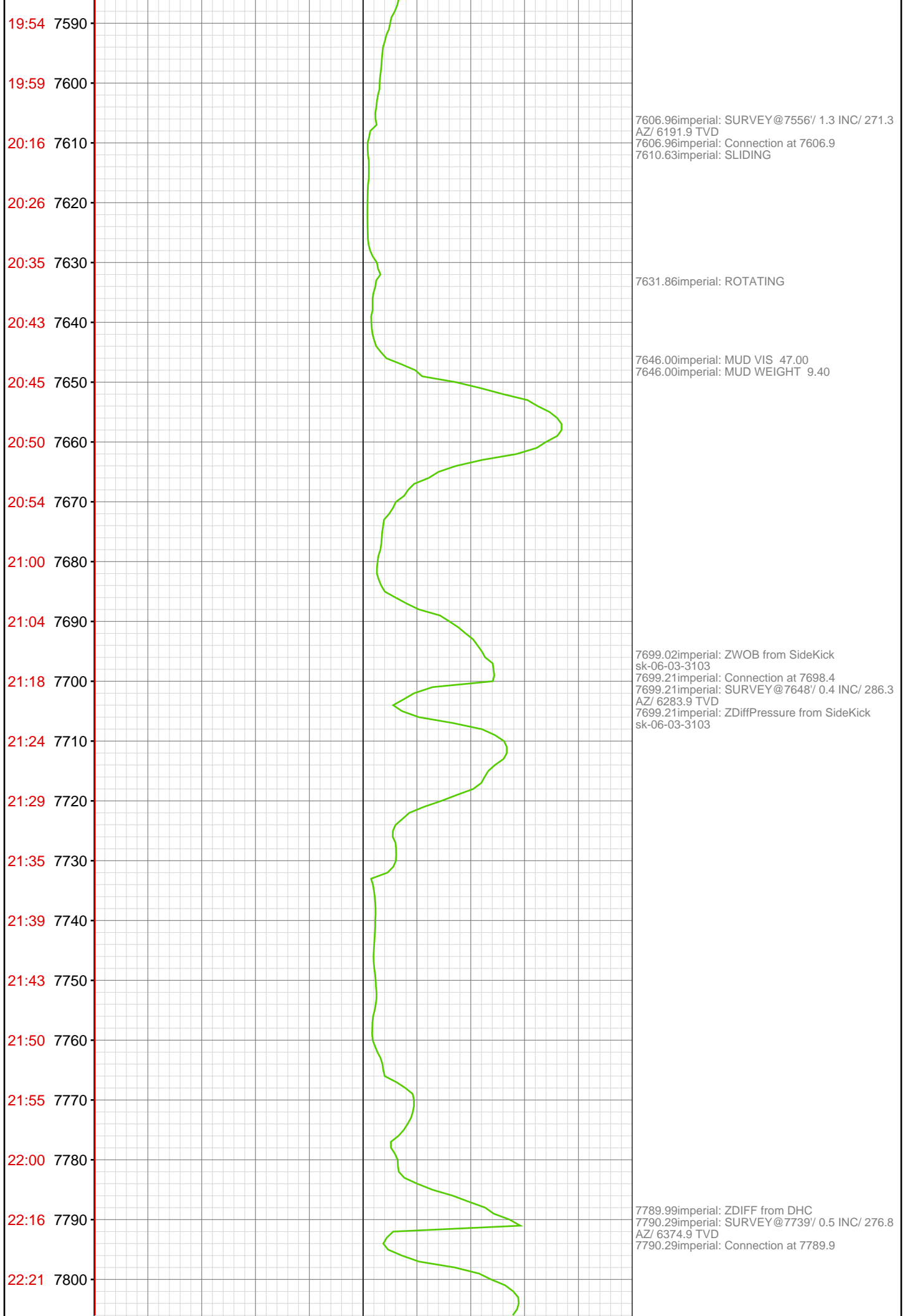




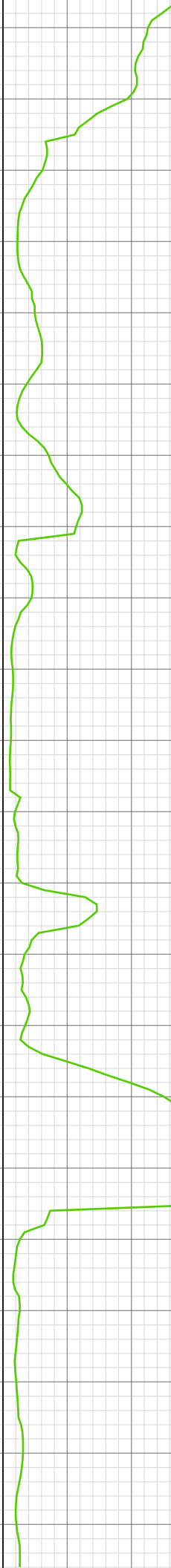








22:26 7810  
22:32 7820  
22:38 7830  
22:41 7840  
22:46 7850  
22:51 7860  
22:57 7870  
23:14 7880  
23:28 7890  
23:39 7900  
23:50 7910  
Jul 03, 2010  
00:03 7920  
00:10 7930  
00:17 7940  
00:25 7950  
00:31 7960  
00:36 7970  
00:52 7980  
01:00 7990  
01:04 8000  
01:09 8010  
01:14 8020



7808.99imperial: MUD VIS 48.00  
7808.99imperial: MUD WEIGHT 9.60  
  
7880.51imperial: Connection at 7881.4  
7880.51imperial: SURVEY@7831'/ 0.8 INC/ 273.8  
AZ/ 6466.9 TVD  
7880.51imperial: SLIDING  
  
7917.00imperial: ZDIFF from DHC  
  
7950.98imperial: MUD VIS 47.00  
7950.98imperial: MUD WEIGHT 9.75  
  
7974.25imperial: SURVEY@7952'/ 1.6 INC/ 51.3  
AZ/ 6587.9 TVD  
7974.25imperial: Connection at 7972.9

