

1625 Broadway  
Suite 2000  
Denver, CO 80202

Tel: 303.228.4000  
Fax: 303.228.4280

www.nobleenergyinc.com



August 29, 2011

Colorado Oil and Gas Conservation Commission  
The Chancery Building  
1120 Lincoln Street, Suite 801  
Denver, CO 80203

Attn: Mr. David Neslin, Director

RE: Karakakes H14-63HN  
Niobrara New Drill  
Township 3 North, Range 65 West, 6th P.M.  
Section 13: NW/4SW/4: 1484' FSL & 283' FWL (Surface Location)  
Section 14: NE/4SE/4: 1484' FSL & 542' FEL (Beginning of Lateral)  
Section 14: NW/4SW/4: 1500' FSL & 535' FWL (Bottom Hole Location)  
Weld County, Colorado

Mr. Neslin:

Noble Energy, Inc. ("NEI") is planning to drill the captioned boundary well in accordance with the provisions of COGCC Rule 318A.e.

NEI's proposed wellbore spacing unit consists of the S/2 Sec. 14, T3N, R65W, creating a 320-acre wellbore spacing unit for the Niobrara formation. NEI is the only owner within the proposed wellbore spacing unit, therefore NEI hereby attests that no notice letters are required under COGCC Rule 318A(l).e.(6).

Enclosed are copies of the following documents to assist you in your review and approval of NEI's proposed APD for the captioned well:

- Map & plat illustrating proposed wellbore spacing unit.

Thank you for your attention to the enclosed. NEI respectfully requests that the COGCC review the enclosed information and approve the Application for Permit to Drill the captioned well.

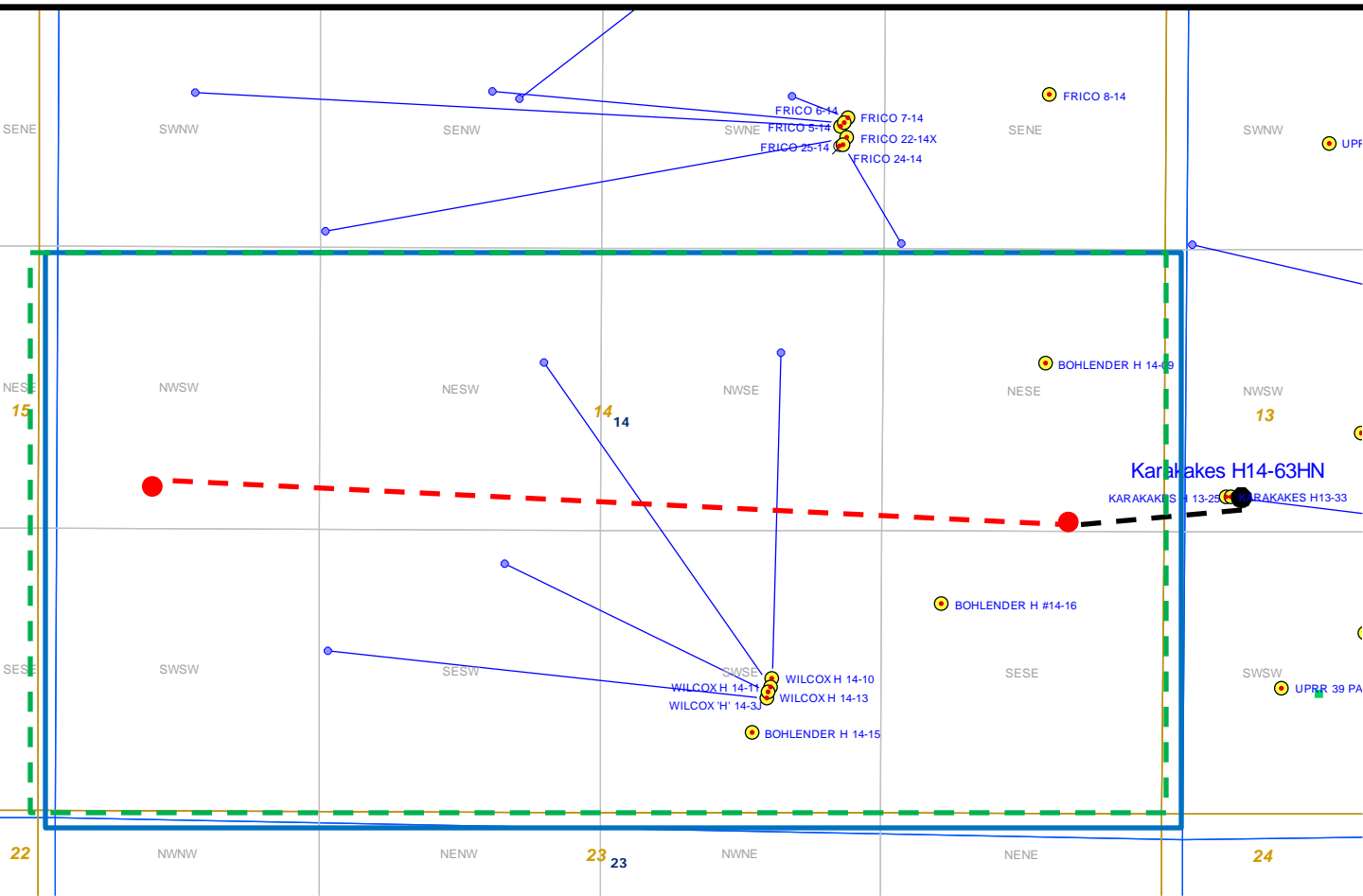
Sincerely,

Justin Garrett  
Regulatory Specialist  
Noble Energy Inc.

# Karakakes H14-63HN

## Proposed Spacing Unit - Noble Energy, Inc

### S/2 Section 14, Township 3 North, Range 65 West



#### Legend



Proposed 320 acre spacing unit



Bottom Hole Location



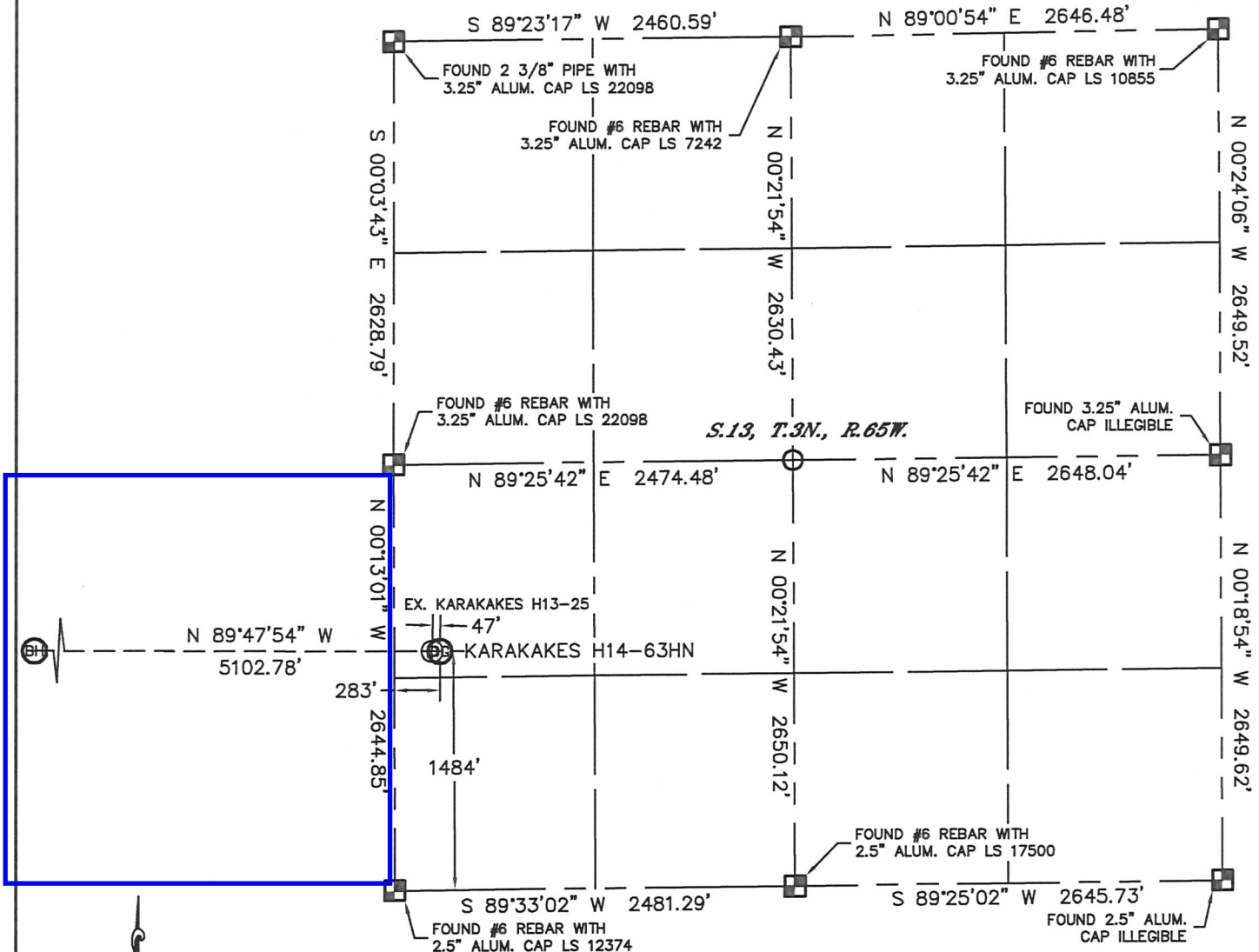
Bottom Hole Located S/2, Sec. 14, T3N, R65W

The governmental ¼ Section has less than 8 bottom hole wells producing from the Codell, Niobrara, and J-Sand formations.

# WELL LOCATION CERTIFICATE

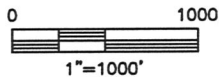
THIS MAP DOES NOT REPRESENT A BOUNDARY SURVEY

SECTION: 13  
TOWNSHIP: 3N  
RANGE: 65W



In accordance with a request from Nate McCorkell with Noble Energy Inc. Lat40°, Inc. has determined the surface location of the KARAKAKES H14-63HN to be 1484' from the SOUTH line and 283' from the WEST line as measured at right angles from the section lines of Section 13, Township 3 North, Range 65 West and the bottom hole to be 1500' from the SOUTH line and 535' from the WEST line as measured at right angles from the section lines of Section 14, Township 3 North, Range 65 West of the Sixth Principal Meridian, County of Weld, State of Colorado.

I hereby state that this Well Location Certificate was prepared by me, or under my direct supervision, that the fieldwork was completed on 4/25/11, for and on behalf of Noble Energy Inc. That this is not a Land Survey Plat or an Improvement Survey Plat, and that it is not to be relied upon for establishment of fence, building, or other future Improvement lines.



## NOTE:

- 1) Bearings shown are Grid Bearings of the Colorado State Plane Coordinate System, North Zone, North American Datum 1983/2007. The lineal dimensions as contained herein are based upon the "U.S. Survey Foot."
- 2) Ground elevations are based on an observed GPS elevation (NAVD 1988 DATUM).
- 3) NEAREST EXISTING WELL: KARAKAKES H13-25, 47'
- 4) IMPROVEMENTS: See LOCATION DRAWING for all visible improvements within 400' of disturbed area.
- 5) SURFACE USE: PASTURE, EX. WELL PAD
- 6) INSTRUMENT OPERATOR: ADAM KELLY

SURFACE LOCATION  
LATITUDE: 40.22203°N  
LONGITUDE: 104.61998°W  
PDOP: 1.4  
ELEV: 4836'  
1/4, 1/4: NW1/4SW1/4  
NEAREST PROPERTY LINE: 161' SOUTH

BOTTOM HOLE  
LATITUDE: 40.22222°N  
LONGITUDE: 104.63825°W

## NOTE

According to Colorado law, you must commence any legal action based upon any defect in this W.L.C. within three years after you discover such defect. In no event, may any action based upon any defect in this survey be commenced more than ten years after the date of the certificate shown hereon. (13-80-105 C.R.S.)

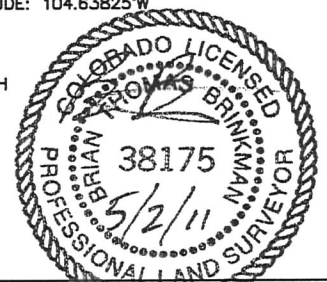
## LEGEND

- = ALIQUOT MONUMENT AS DESCRIBED
- = CALCULATED POSITION

## SHEET 1 OF 2

Brian T. Brinkman—On behalf of Lat40°, Inc.  
Colorado Licensed Professional  
Land Surveyor No. 38175

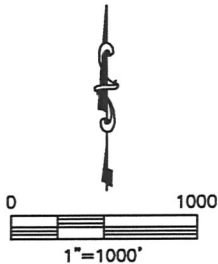
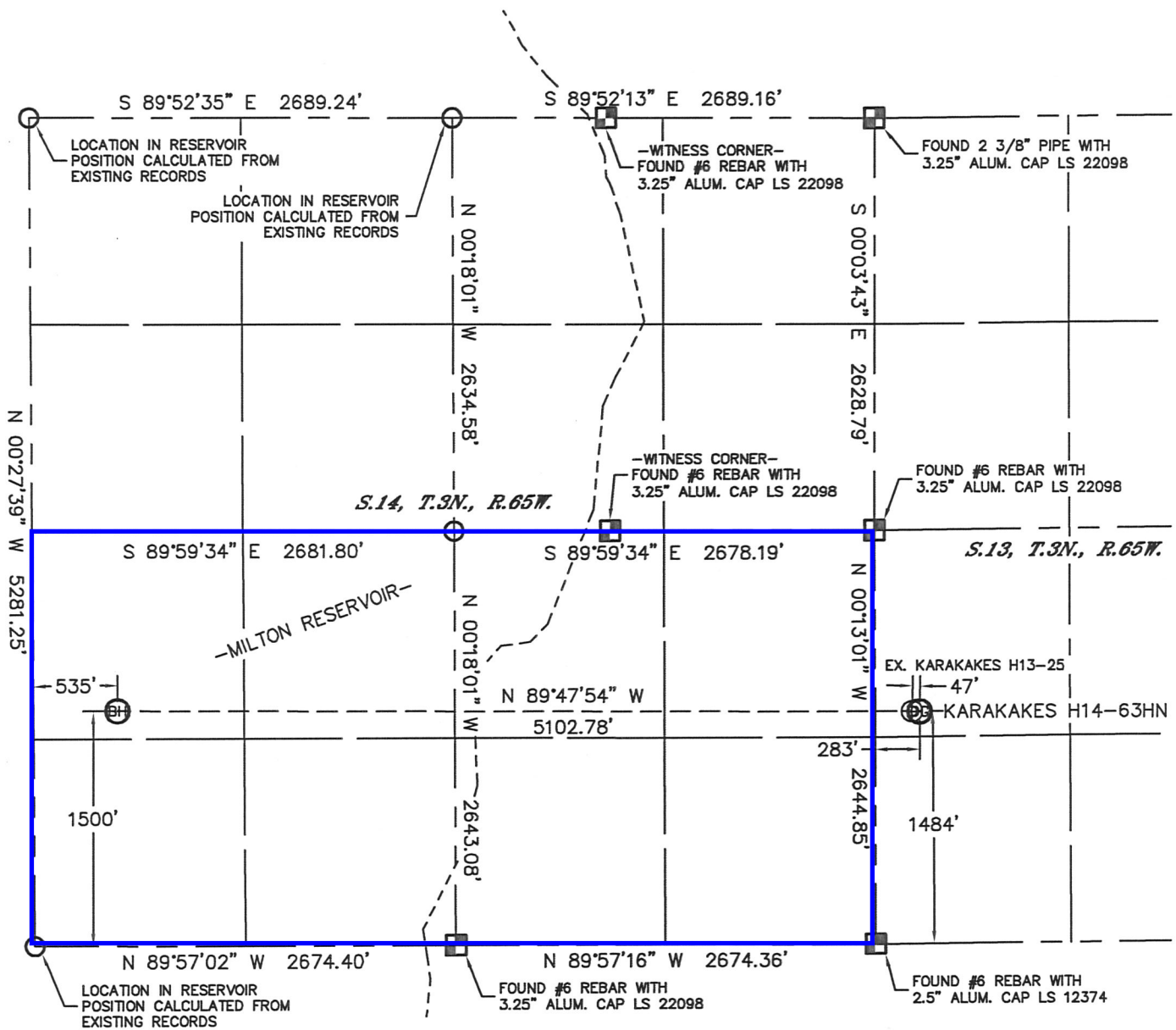
PROJECT#: 2011105





# WELL LOCATION CERTIFICATE

THIS MAP DOES NOT REPRESENT A BOUNDARY SURVEY

SECTION: 13  
TOWNSHIP: 3N  
RANGE: 65W



**NOTE**  
According to Colorado law, you must commence any legal action based upon any defect in this W.L.C. within three years after you discover such defect. In no event, may any action based upon any defect in this survey be commenced more than ten years after the date of the certificate shown hereon. (13-80-105 C.R.S.)

**LEGEND**  
 = ALIQUOT MONUMENT AS DESCRIBED  
 = CALCULATED POSITION

**SHEET 2 OF 2**

Brian T. Brinkman—On behalf of Lat40°, Inc.  
Colorado Licensed Professional  
Land Surveyor No. 38175  
PROJECT#: 2011105

