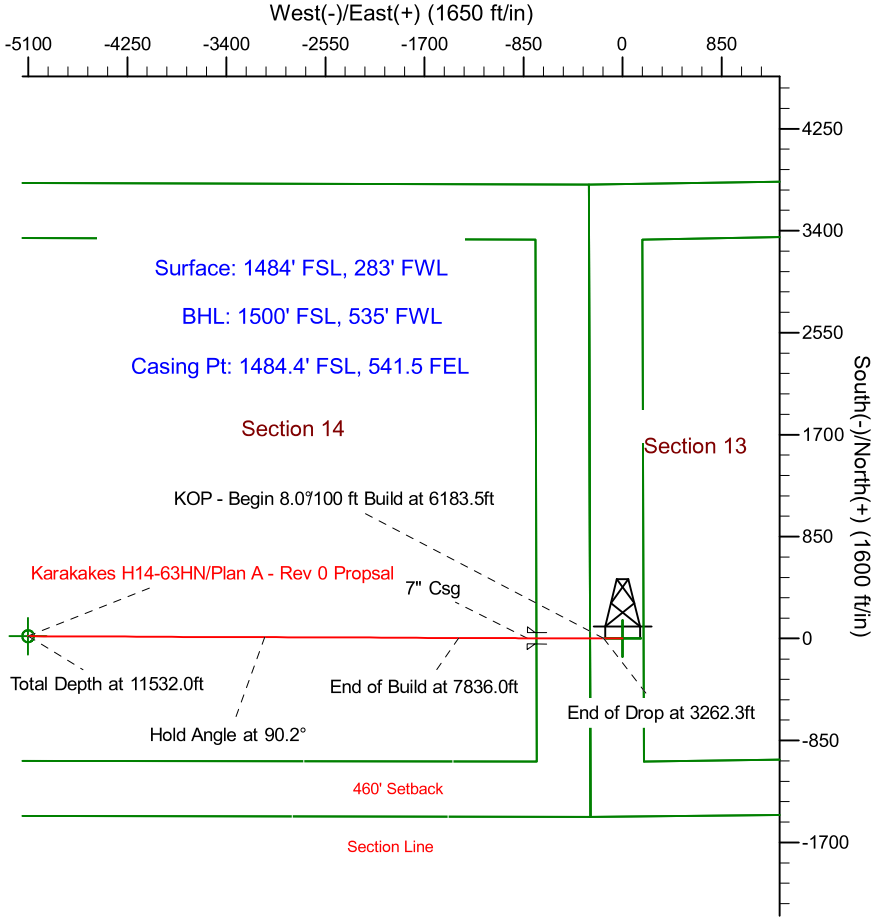
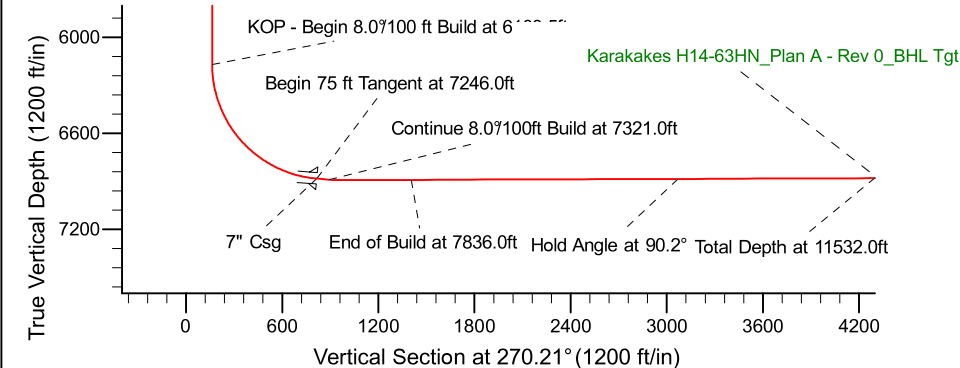
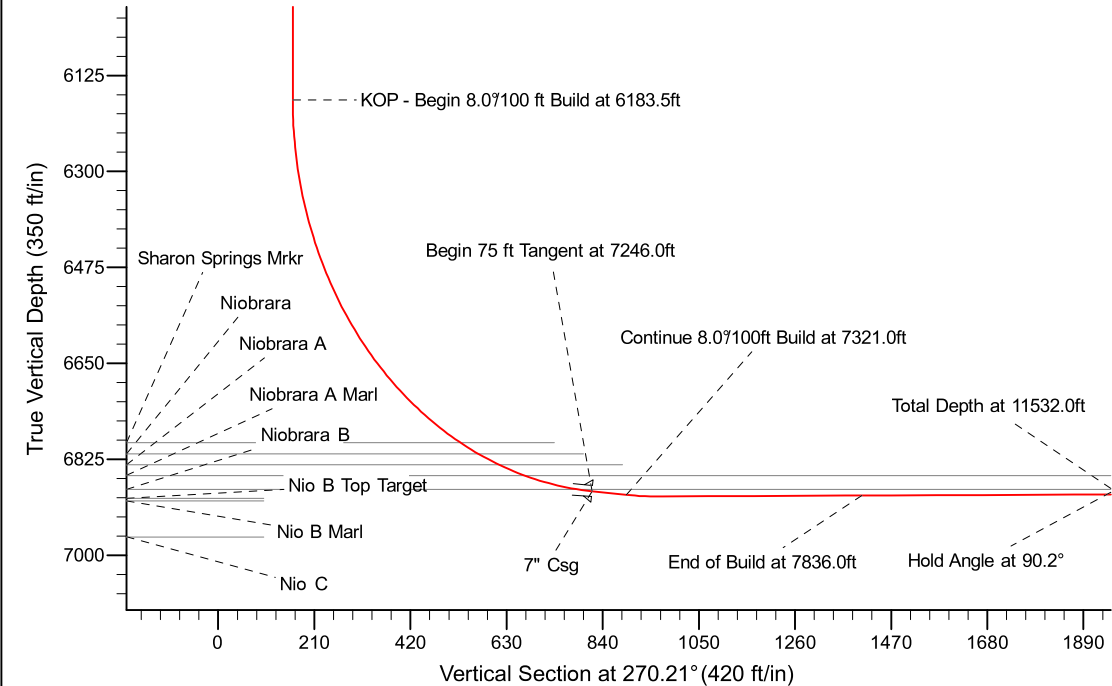


Project: Weld County Colorado (NAD 83)
Site: Sec. 13, T3N, R65W
Well: Karakakes H14-63HN
Wellbore: Plan A - Rev 0 (PERMITTING PLAN ONLY)
Design: Plan A - Rev 0 Proposal

Noble Energy



| SECTION DETAILS | | | | | | | | | | |
|-----------------|---------|-------|--------|--------|-------|---------|------|--------|--------|--|
| Sec | MD | Inc | Azi | TVD | +N/-S | +E/-W | Dleg | TFace | VSec | Target |
| 1 | 0.0 | 0.00 | 0.00 | 0.0 | 0.0 | 0.0 | 0.00 | 0.00 | 0.0 | |
| 2 | 2000.0 | 0.00 | 0.00 | 2000.0 | 0.0 | 0.0 | 0.00 | 0.00 | 0.0 | |
| 3 | 2479.9 | 12.00 | 270.00 | 2476.4 | 0.0 | -50.1 | 2.50 | 270.00 | 50.1 | |
| 4 | 2782.4 | 12.00 | 270.00 | 2772.3 | 0.0 | -112.9 | 0.00 | 0.00 | 112.9 | |
| 5 | 3262.3 | 0.00 | 0.00 | 3248.7 | 0.0 | -163.0 | 2.50 | 180.00 | 163.0 | |
| 6 | 6183.5 | 0.00 | 0.00 | 6169.9 | 0.0 | -163.0 | 0.00 | 0.00 | 163.0 | |
| 7 | 7246.0 | 85.00 | 270.22 | 6883.4 | 2.5 | -816.8 | 8.00 | 270.22 | 816.8 | |
| 8 | 7321.0 | 85.00 | 270.22 | 6889.9 | 2.8 | -891.5 | 0.00 | 0.00 | 891.5 | |
| 9 | 7386.0 | 90.20 | 270.22 | 6892.6 | 3.0 | -956.4 | 8.00 | 0.00 | 956.4 | |
| 10 | 11532.0 | 90.20 | 270.22 | 6878.0 | 19.1 | -5102.4 | 0.00 | 43.88 | 5102.4 | Karakakes H14-63HN_Plan A - Rev 0_BHL Tgt- |



TGM

Magnetic Model: IGRF200510
Date: 7/25/2011
Inclination: 8.14°
Dip Angle: 66.94°
Field Strength: 53064.1

Grid North is 0.57° East of True North (Grid Convergence)
Magnetic North is 8.71° East of True North (Magnetic Declination)
Magnetic North is 8.15° East of Grid North (Magnetic Convergence)
To convert a True Direction to a Grid Direction, Subtract 0.57°
To convert a Magnetic Direction to a True Direction, Add 8.71° East
To convert a Magnetic Direction to a Grid Direction, Add 8.15°

| WELL DETAILS: Karakakes H14-63HN(NAD83 Geodetic System) | | | |
|--|-----------|---------------------------|-------------------|
| Ground Level: 4836.0 | | Latitude | |
| Northing | Easting | Longitude | |
| 403844.65 | 989301.72 | 40° 13' 19.308 N | 104° 37' 11.928 W |
| Plan: Plan A - Rev 0 Proposal (Karakakes H14-63HN/Plan A - Rev 0 (PERMITTING PLAN ONLY)) | | | |
| Created By: Erasmo Mendoza | | Date: 16:54, July 25 2011 | |
| OK to submit with 2A as per Noble Drilling | | | |
| 7/26/2011 12:51 | | | |