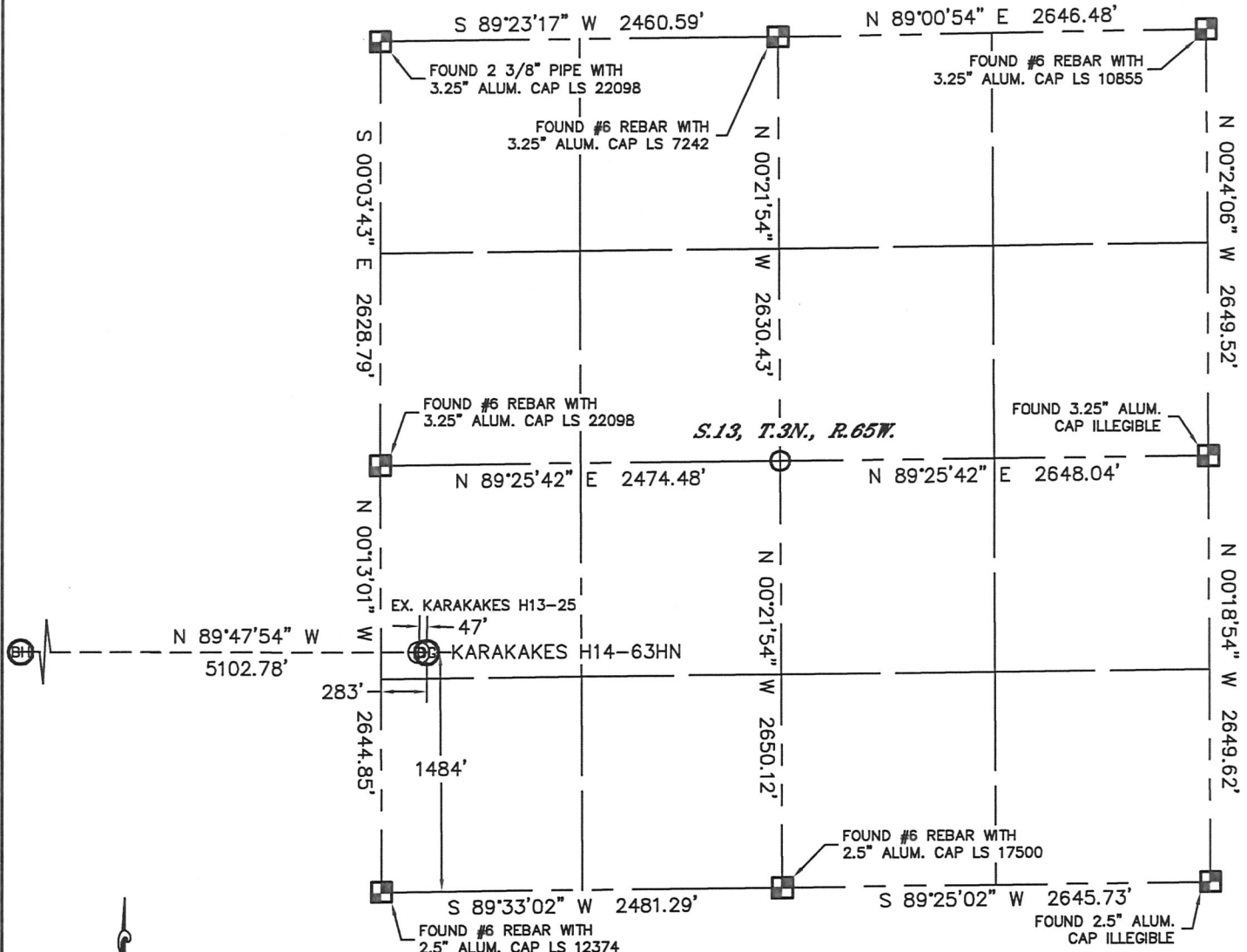


WELL LOCATION CERTIFICATE

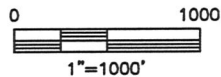
THIS MAP DOES NOT REPRESENT A BOUNDARY SURVEY

SECTION: 13
TOWNSHIP: 3N
RANGE: 65W



In accordance with a request from Nate McCorkell with Noble Energy Inc. Lat40°, Inc. has determined the surface location of the KARAKAKES H14-63HN to be 1484' from the SOUTH line and 283' from the WEST line as measured at right angles from the section lines of Section 13, Township 3 North, Range 65 West and the bottom hole to be 1500' from the SOUTH line and 535' from the WEST line as measured at right angles from the section lines of Section 14, Township 3 North, Range 65 West of the Sixth Principal Meridian, County of Weld, State of Colorado.

I hereby state that this Well Location Certificate was prepared by me, or under my direct supervision, that the fieldwork was completed on 4/25/11, for and on behalf of Noble Energy Inc. That this is not a Land Survey Plat or an Improvement Survey Plat, and that it is not to be relied upon for establishment of fence, building, or other future Improvement lines.



NOTE:

- 1) Bearings shown are Grid Bearings of the Colorado State Plane Coordinate System, North Zone, North American Datum 1983/2007. The lineal dimensions as contained herein are based upon the "U.S. Survey Foot."
- 2) Ground elevations are based on an observed GPS elevation (NAVD 1988 DATUM).
- 3) NEAREST EXISTING WELL: KARAKAKES H13-25, 47'
- 4) IMPROVEMENTS: See LOCATION DRAWING for all visible improvements within 400' of disturbed area.
- 5) SURFACE USE: PASTURE, EX. WELL PAD
- 6) INSTRUMENT OPERATOR: ADAM KELLY

SURFACE LOCATION
LATITUDE: 40.22203°N
LONGITUDE: 104.61998°W
PDOP: 1.4
ELEV: 4836'
1/4, 1/4: NW1/4SW1/4
NEAREST PROPERTY LINE: 161' SOUTH

BOTTOM HOLE
LATITUDE: 40.22222°N
LONGITUDE: 104.63825°W

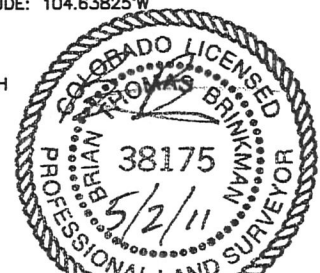
LEGEND

- = ALIQUOT MONUMENT AS DESCRIBED
- = CALCULATED POSITION

SHEET 1 OF 2

Brian T. Brinkman—On behalf of Lat40°, Inc.
Colorado Licensed Professional
Land Surveyor No. 38175

PROJECT#: 2011105



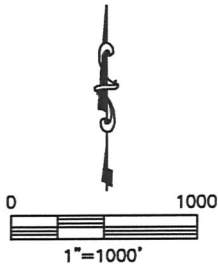
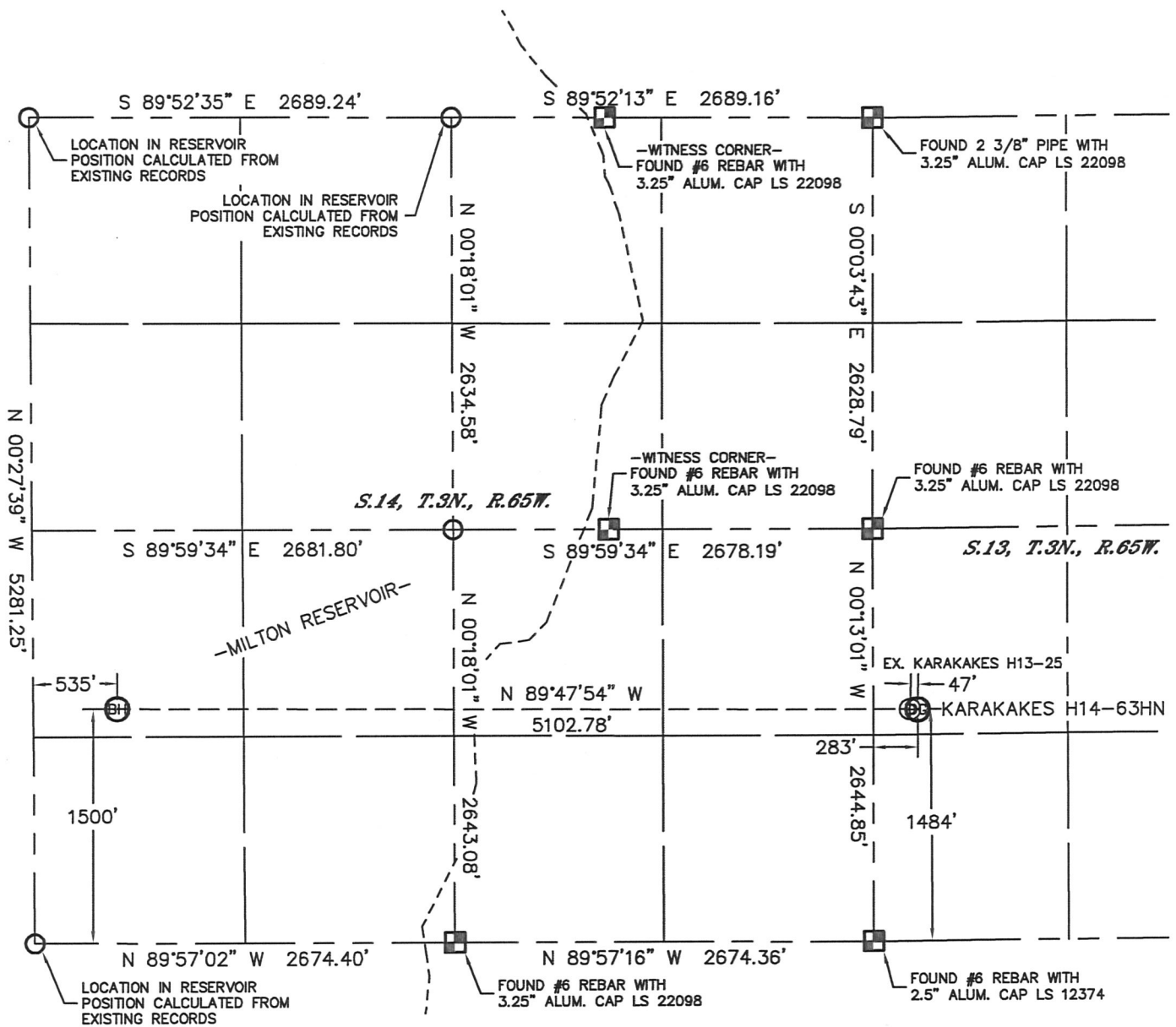
NOTE

According to Colorado law, you must commence any legal action based upon any defect in this W.L.C. within three years after you discover such defect. In no event, may any action based upon any defect in this survey be commenced more than ten years after the date of the certificate shown hereon. (13-80-105 C.R.S.)

WELL LOCATION CERTIFICATE

THIS MAP DOES NOT REPRESENT A BOUNDARY SURVEY

SECTION: 13
TOWNSHIP: 3N
RANGE: 65W



NOTE
According to Colorado law, you must commence any legal action based upon any defect in this W.L.C. within three years after you discover such defect. In no event, may any action based upon any defect in this survey be commenced more than ten years after the date of the certificate shown hereon. (13-80-105 C.R.S.)

LEGEND
 = ALIQUOT MONUMENT AS DESCRIBED
 = CALCULATED POSITION

SHEET 2 OF 2

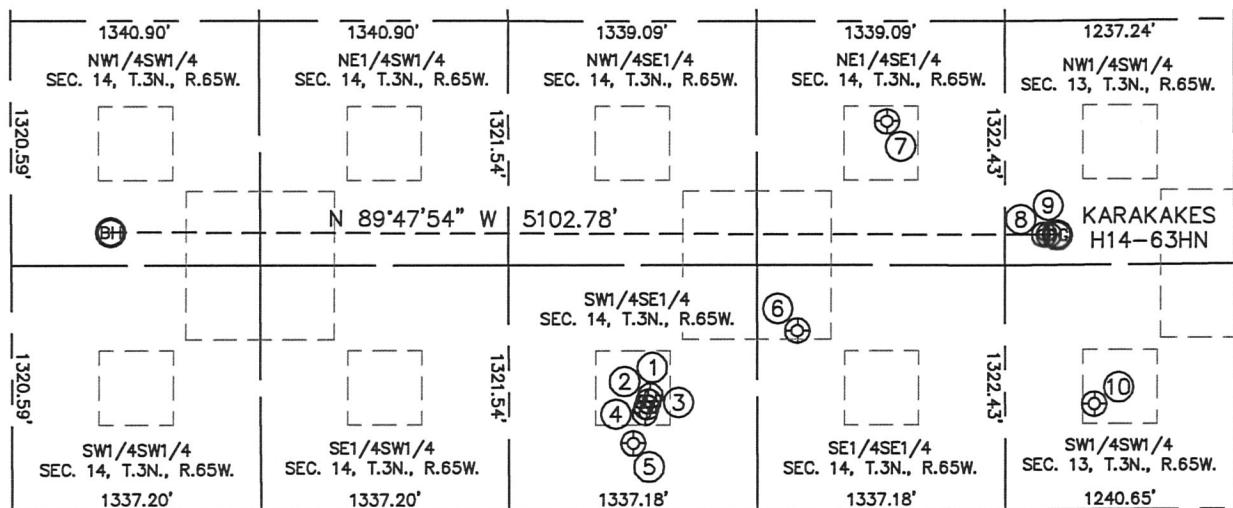
Brian T. Brinkman—On behalf of Lat40°, Inc.
Colorado Licensed Professional
Land Surveyor No. 38175
PROJECT#: 2011105



SITE SKETCH

KARAKAKES H14-63HN

SECTION: 13
TOWNSHIP: 3N
RANGE: 65W



- | | | | | |
|--|--|--|--|---|
| ①
WILCOX H14-10
SW1/4SE1/4
620' FSL
1913' FEL
LAT-40.21972'N
LONG-104.62786'W
PDOP: 1.7
ELEV: 4823' | ②
WILCOX H14-11
SW1/4SE1/4
589' FSL
1923' FEL
LAT-40.21963'N
LONG-104.62789'W
PDOP: 1.3
ELEV: 4823' | ③
WILCOX H14-3J
SW1/4SE1/4
557' FSL
1933' FEL
LAT-40.21955'N
LONG-104.62793'W
PDOP: 2.6
ELEV: 4823' | ④
WILCOX H14-13
SW1/4SE1/4
525' FSL
1942' FEL
LAT-40.21946'N
LONG-104.62796'W
PDOP: 1.8
ELEV: 4823' | ⑤
BOHLENDER H14-15
SW1/4SE1/4
362' FSL
2005' FEL
LAT-40.21901'N
LONG-104.62819'W
PDOP: 1.3
ELEV: 4821' |
| ⑥
BOHLENDER H14-16
SE1/4SE1/4
971' FSL
1122' FEL
LAT-40.22066'N
LONG-104.62502'W
PDOP: 2.0
ELEV: 4826' | ⑦
BOHLENDER H14-09
NE1/4SE1/4
2103' FSL
637' FEL
LAT-40.22375'N
LONG-104.62326'W
PDOP: 2.0
ELEV: 4822' | ⑧
KARAKAKES H13-33
NW1/4SW1/4
1486' FSL
210' FWL
LAT-40.22204'N
LONG-104.62024'W
PDOP: 1.4
ELEV: 4836' | ⑨
KARAKAKES H13-25
NW1/4SW1/4
1485' FSL
235' FWL
LAT-40.22204'N
LONG-104.62015'W
PDOP: 1.7
ELEV: 4836' | ⑩
UPRR 39 PAN AM B 1
SW1/4SW1/4
572' FSL
480' FWL
LAT-40.21953'N
LONG-104.61929'W
PDOP: 1.4
ELEV: 4847' |

