



SUPERIOR
Hays,
Kansas

MICRO
LOG

Company MULL DRILLING CO., INC.
Well APC-TENNEL #1-33
Field
County KIOWA
State COLORADO

Company MULL DRILLING COMPANY, INC.
Well APC-TENNEL #1-33
Field
County KIOWA State COLORADO

Location: API # : 05-061-06853-00
1204' FNL & 1798' FWL
SEC 33 TWP 17S RGE 45W
Permanent Datum GROUND LEVEL Elevation 3998
Log Measured From KELLY BUSHING 11' A.G.L.
Drilling Measured From KELLY BUSHING
Other Services
CDL/CNL/PE
DIL/SONIC
Elevation
K.B. 4009
D.F.
G.L. 3998

Date	8-5-11		
Run Number	TWO		
Depth Driller	5213		
Depth Logger	5214		
Bottom Logged Interval	5196		
Top Log Interval	3400		
Casing Driller	336		
Casing Logger	336		
Bit Size	7.875		
Type Fluid in Hole	CHEMICAL MUD		
Density / Viscosity	9.3 / 54		
pH / Fluid Loss	9.5 / 8.8		
Source of Sample	FLOWLINE		
Rm @ Meas. Temp	0.80 @ 85F		
Rmf @ Meas. Temp	0.60 @ 85F		
Rmc @ Meas. Temp	0.96 @ 85F		
Source of Rmf / Rmc	MEASURED		
Rm @ BHT	.540 @ 127F		
Time Circulation Stopped	3 HOURS		
Time Logger on Bottom	12:15 A.M.		
Maximum Recorded Temperature	127F		
Equipment Number	860		
Location	HAYS, KS.		
Recorded By	RUPP		
Witnessed By	PHIL ASKEY		

<<< Fold Here >>>

All interpretations are opinions based on inferences from electrical or other measurements and we cannot and do not guarantee the accuracy or correctness of any interpretation, and we shall not, except in the case of gross or willful negligence on our part, be liable or responsible for any loss, costs, damages, or expenses incurred or sustained by anyone resulting from any interpretation made by any of our officers, agents or employees. These interpretations are also subject to our general terms and conditions set out in our current Price Schedule.

Comments

SUPERIOR WELL SERVICES
785-628-6395
THANK YOU FOR YOUR BUSINESS
DIRECTIONS: BRANDON, CO., W EGDE TO RD. #58, 6N, E INTO.



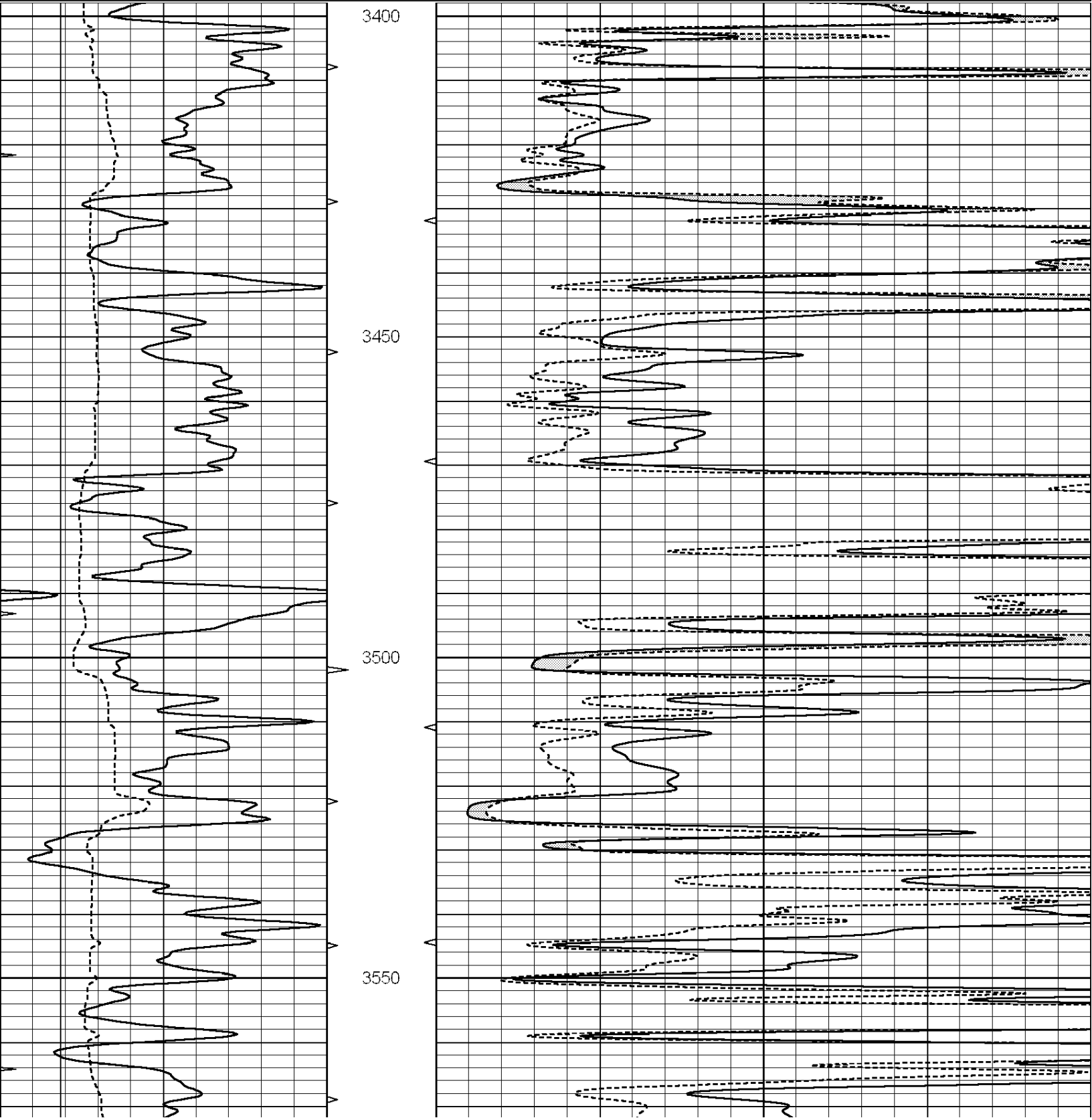
SUPERIOR
Hays,
Kansas

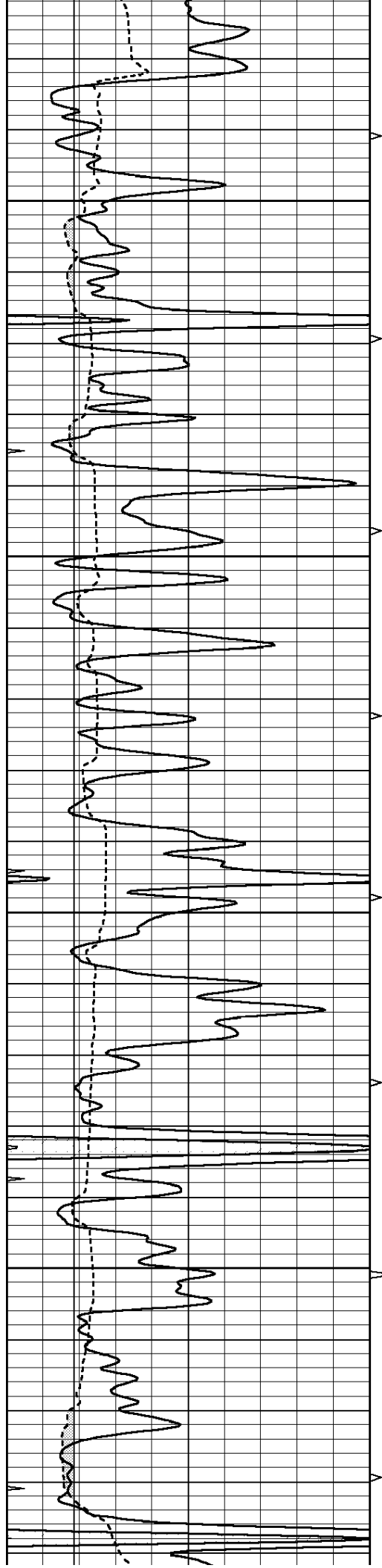
MAIN SECTION

Database File: 007342pdn.db
Dataset Pathname: pass5.1
Presentation Format: micro
Dataset Creation: Fri Aug 05 07:42:44 2011
Charted by: Depth in Feet scaled 1:240

0	GAMMA RAY (GAPI)	150
6	MELCAL (in)	16
0	MINMK	20

0	MEL1.5 (Ohm-m)	40
0	MEL2.0 (Ohm-m)	40



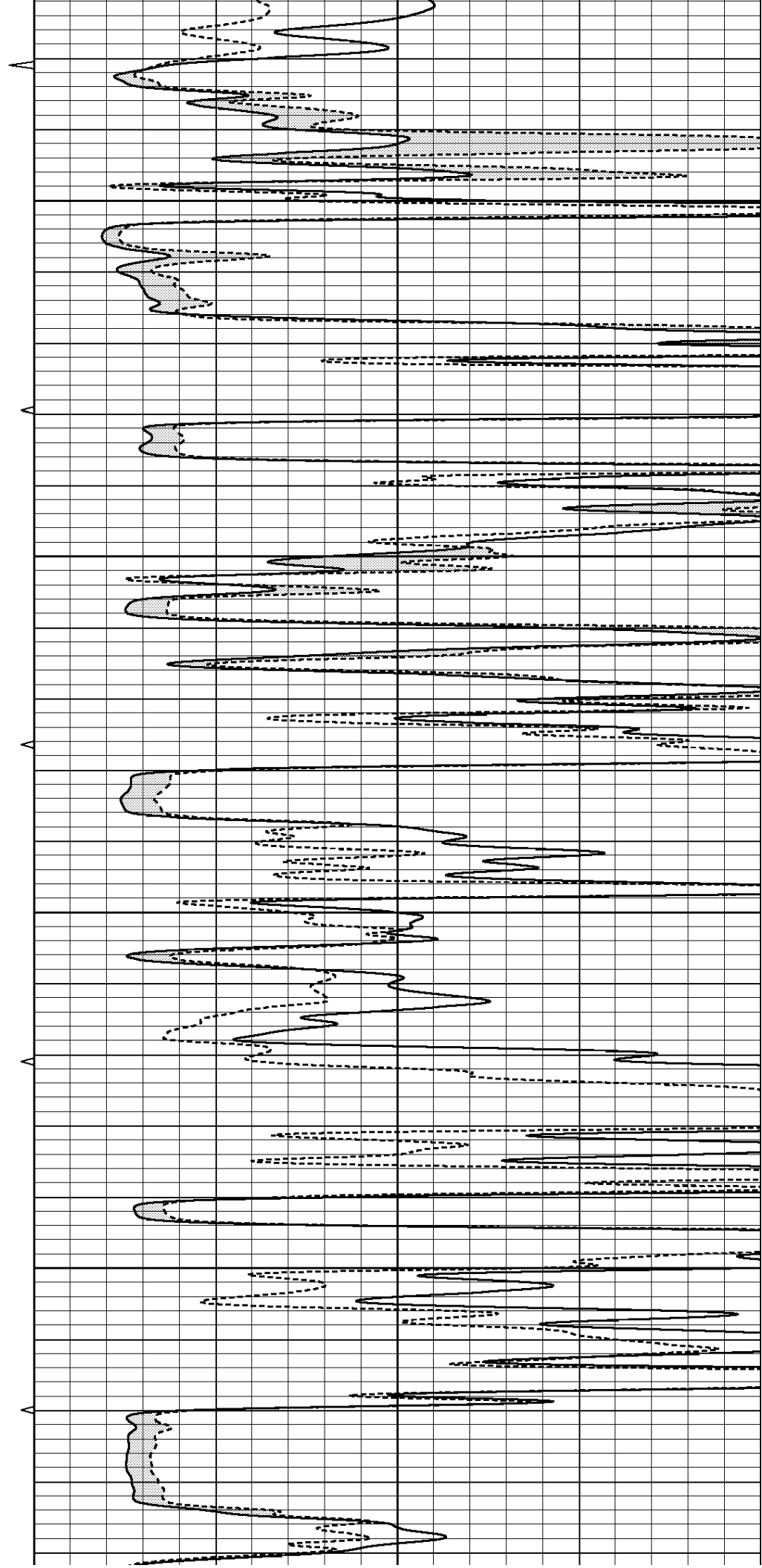


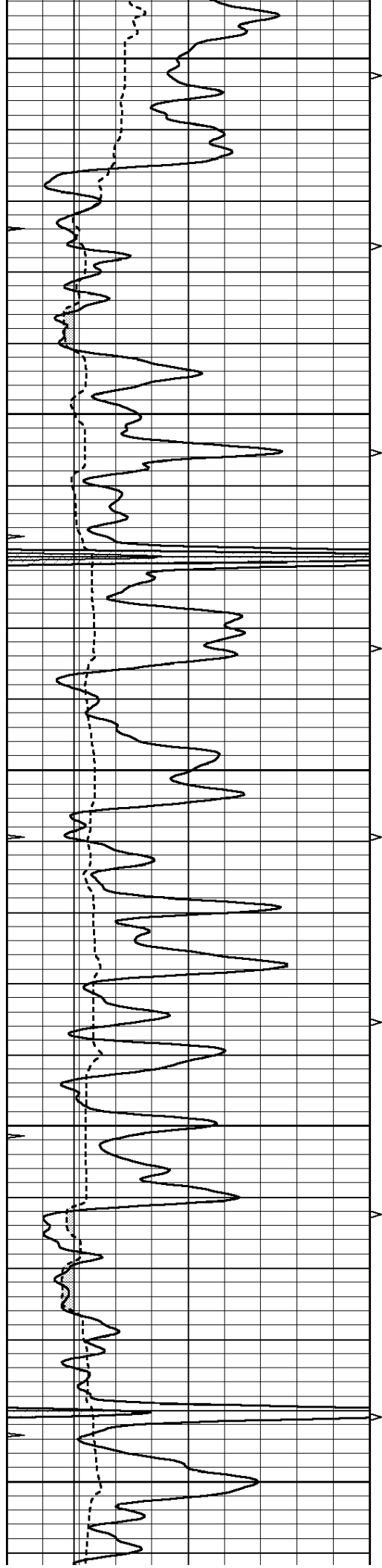
3600

3650

3700

3750





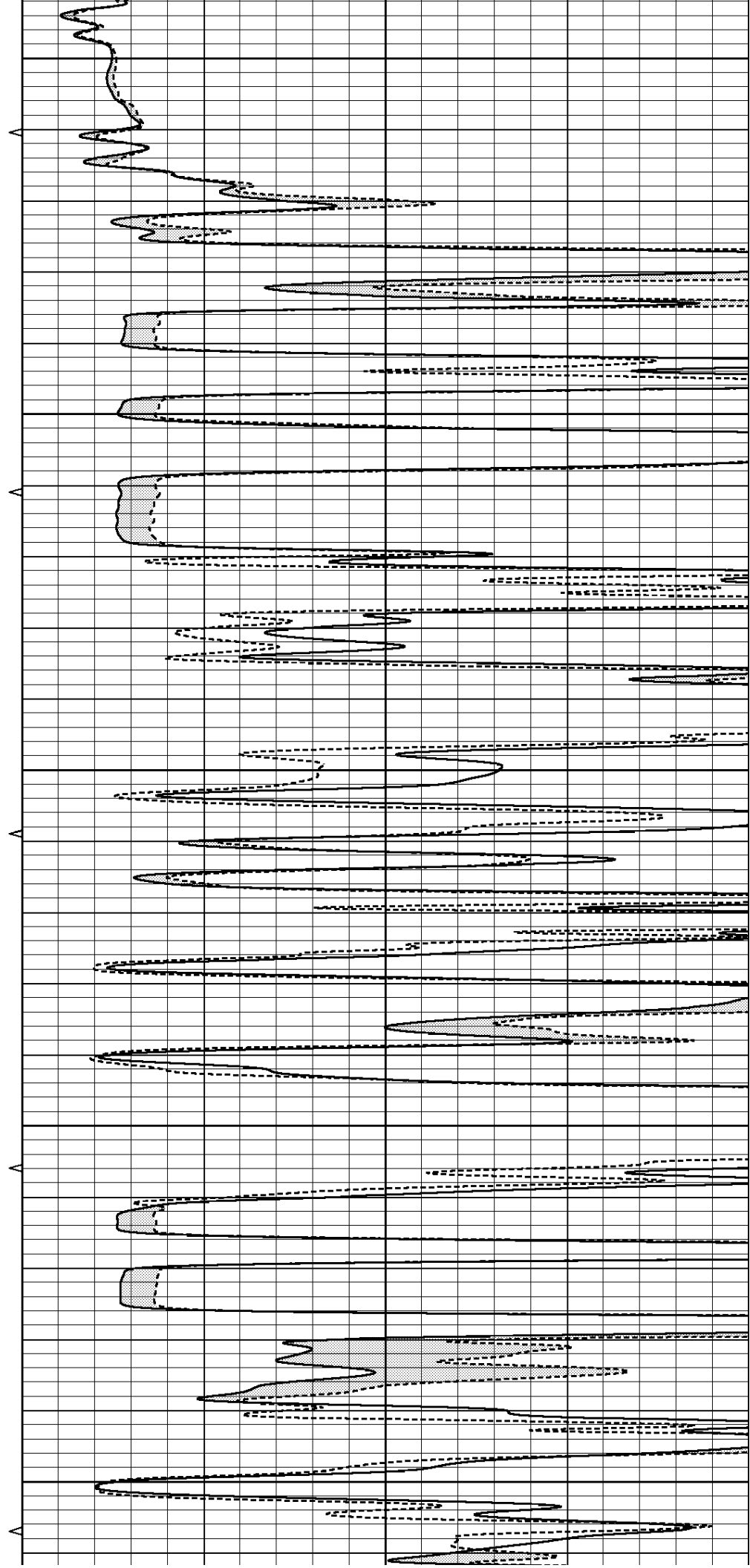
3800

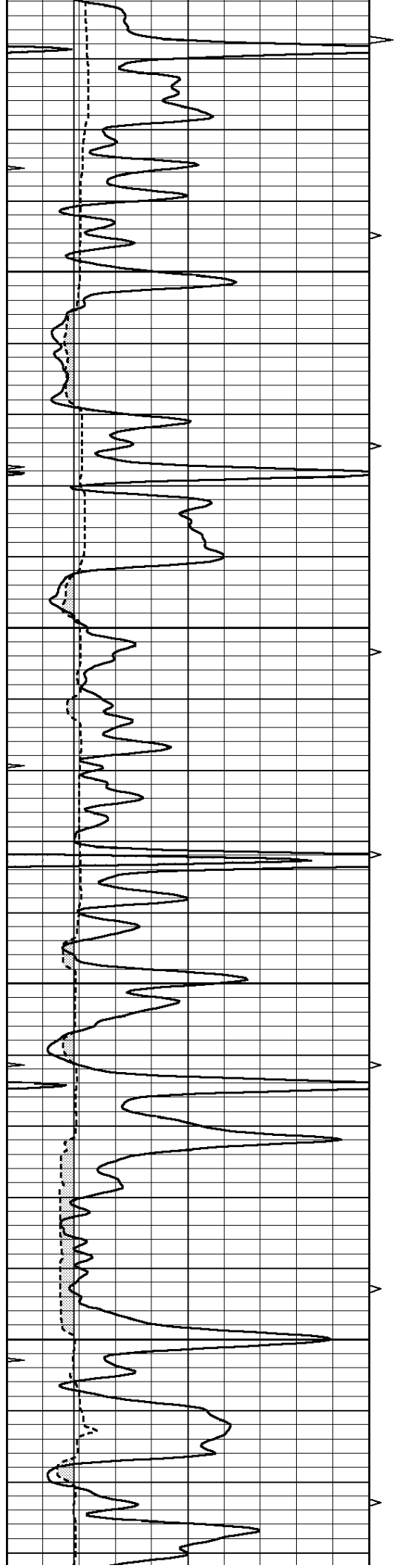
3850

3900

3950

4000



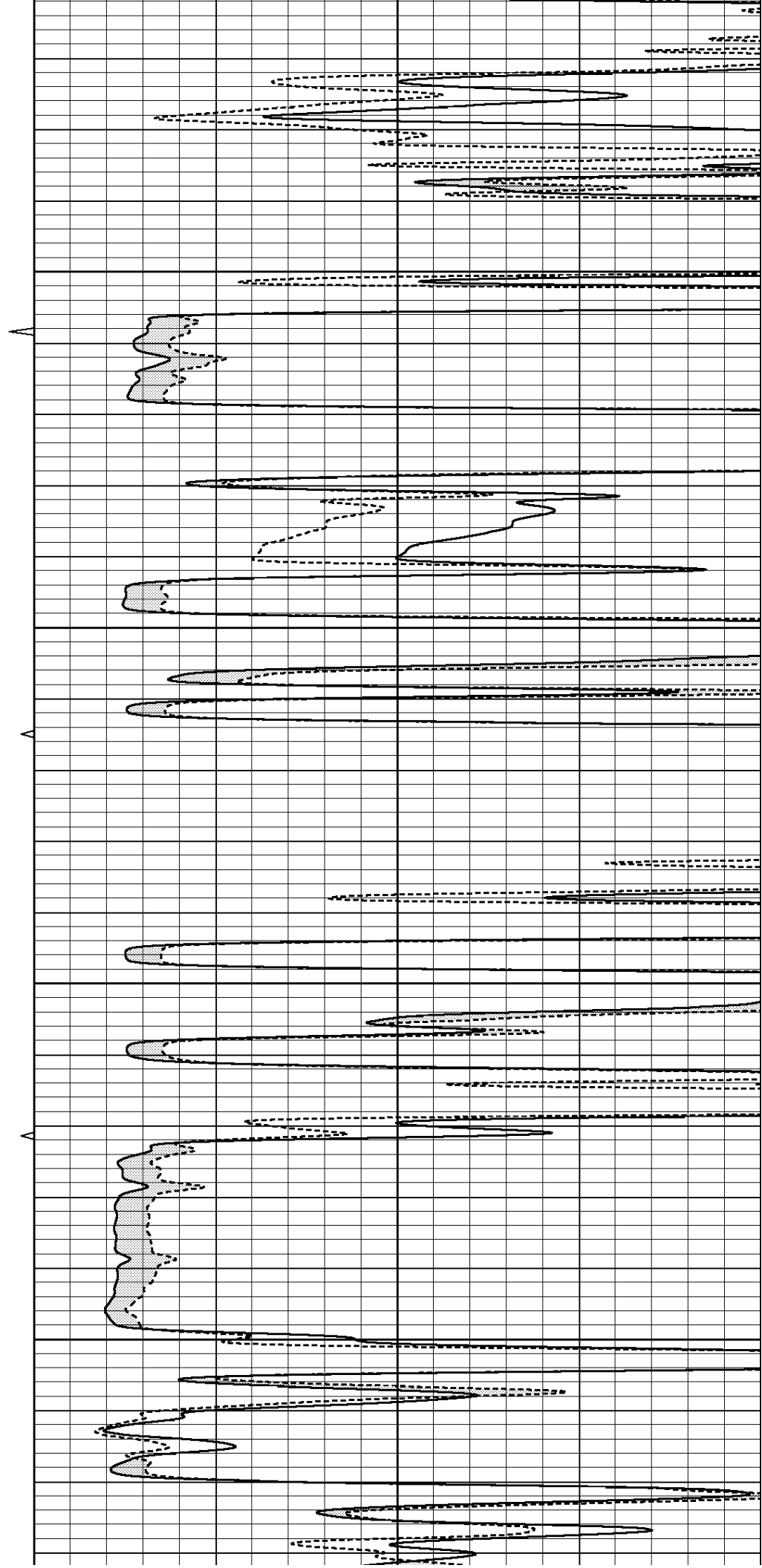


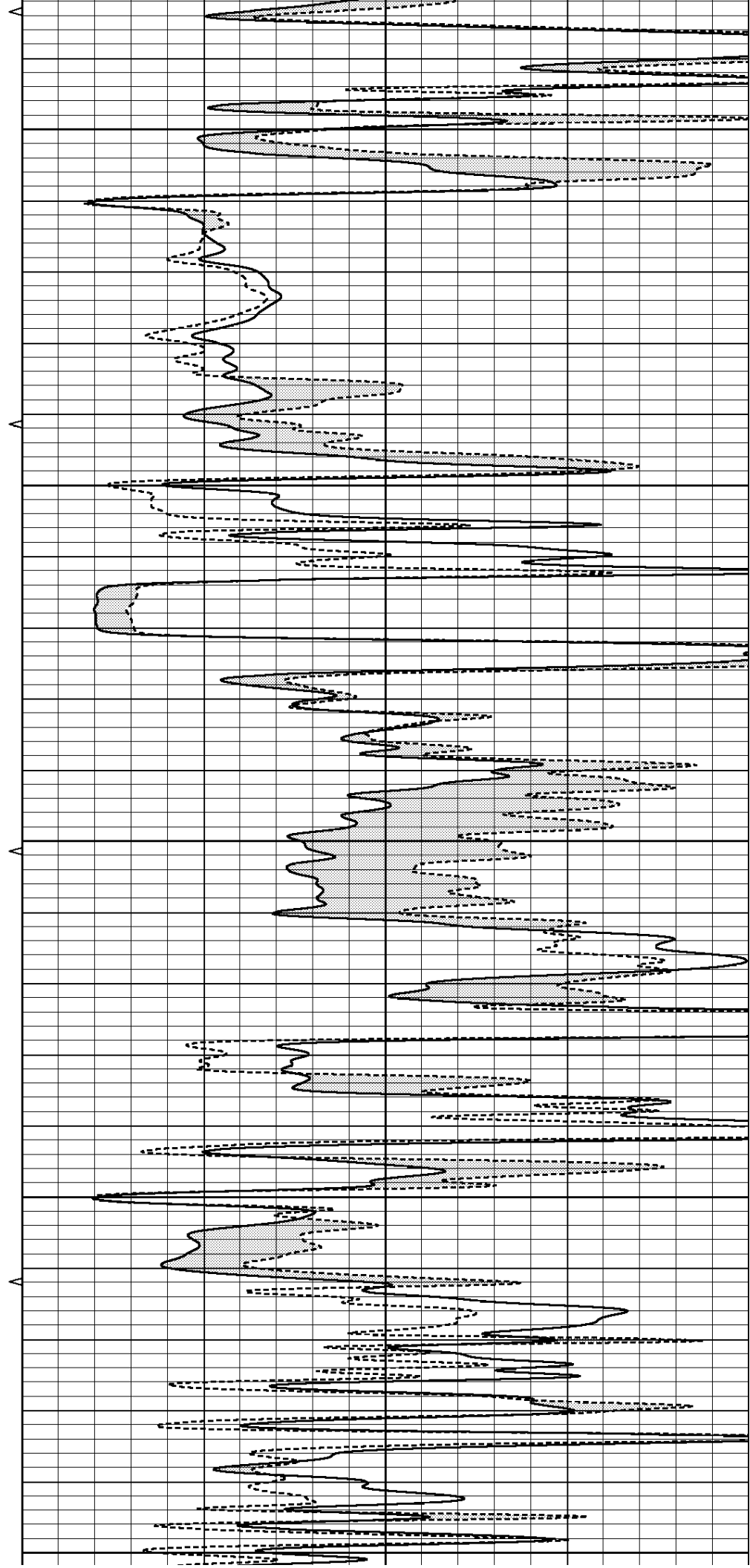
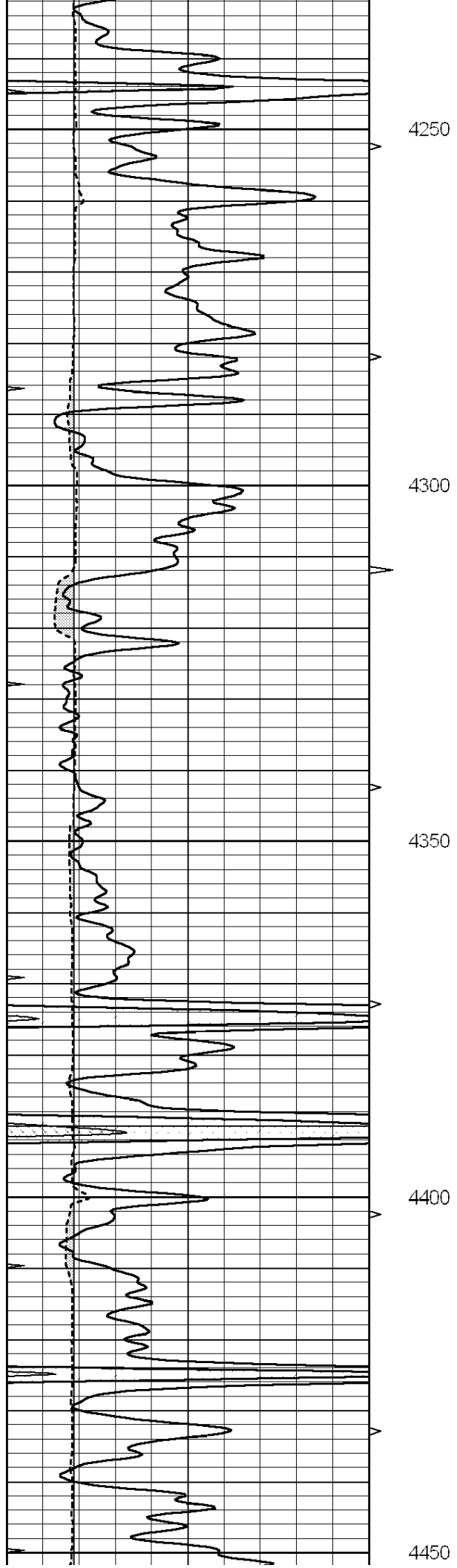
4050

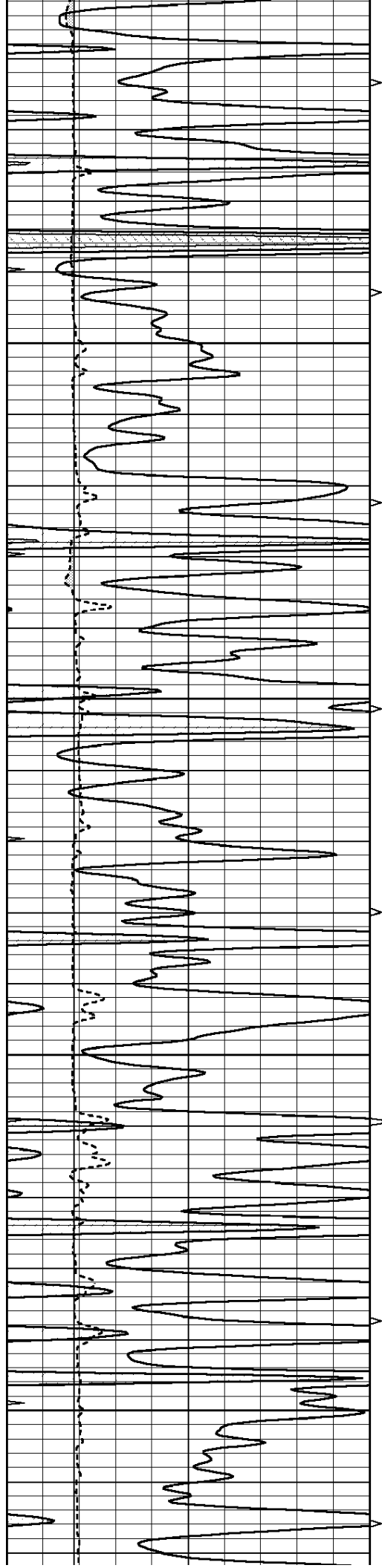
4100

4150

4200





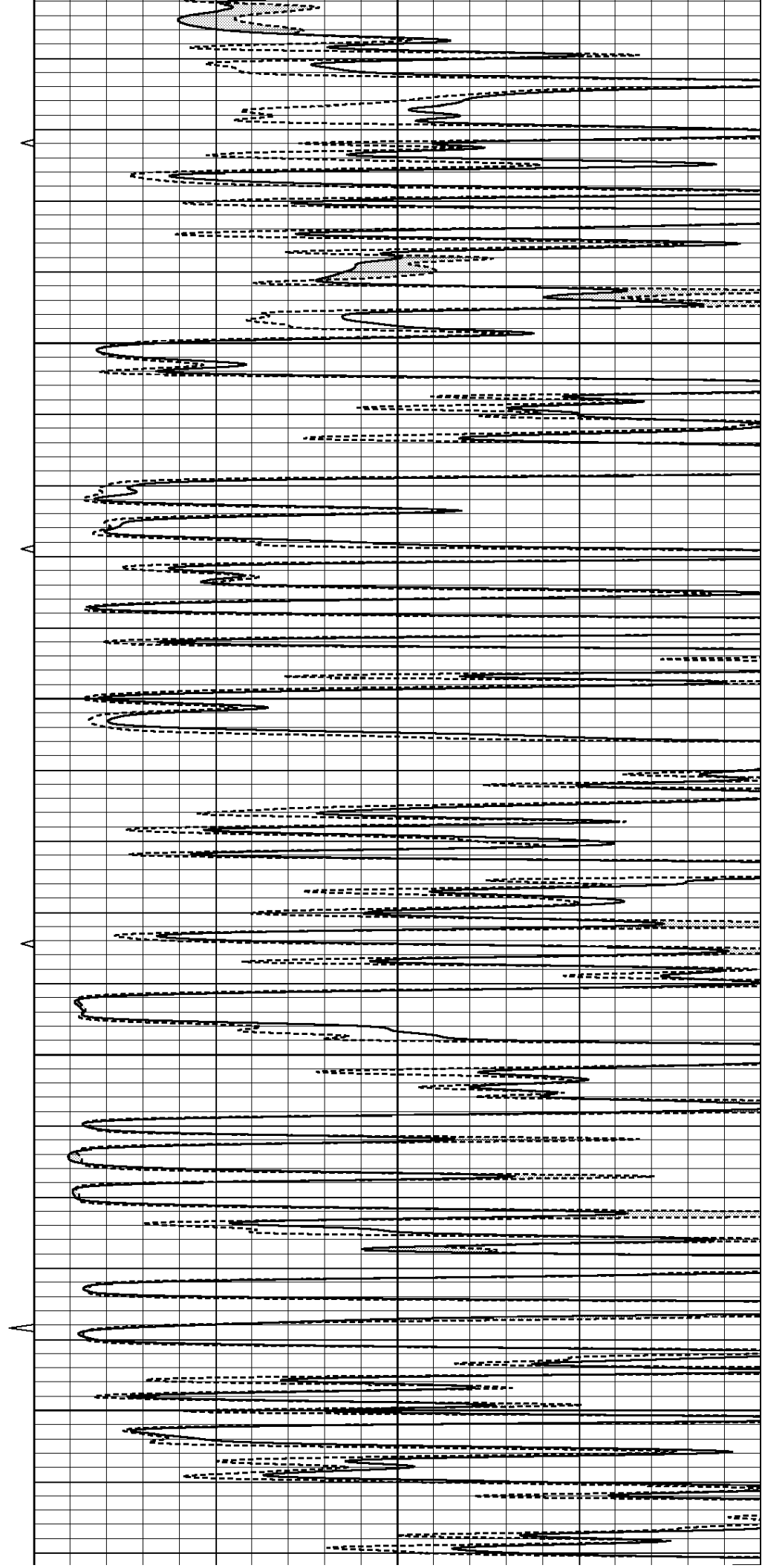


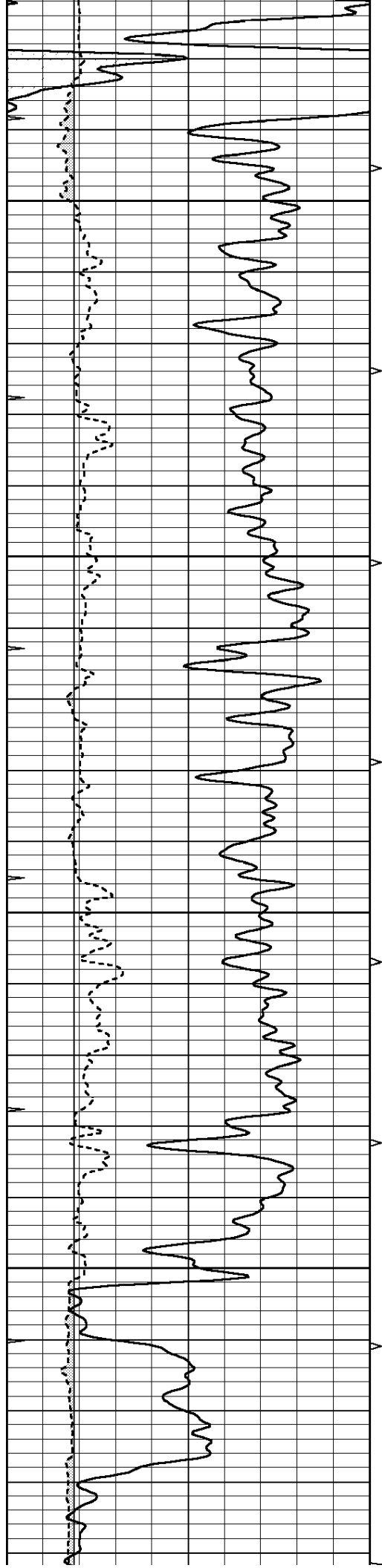
4500

4550

4600

4650



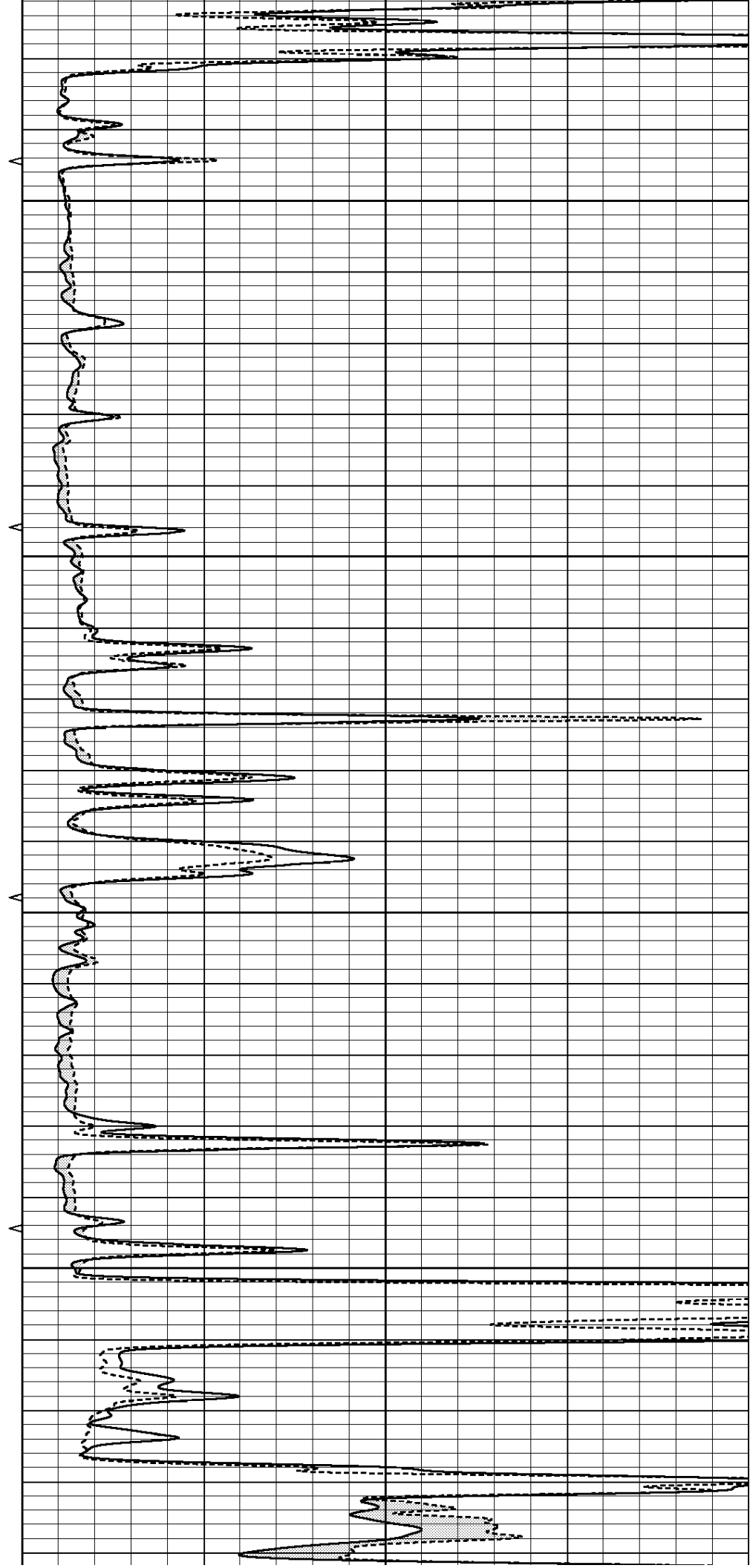


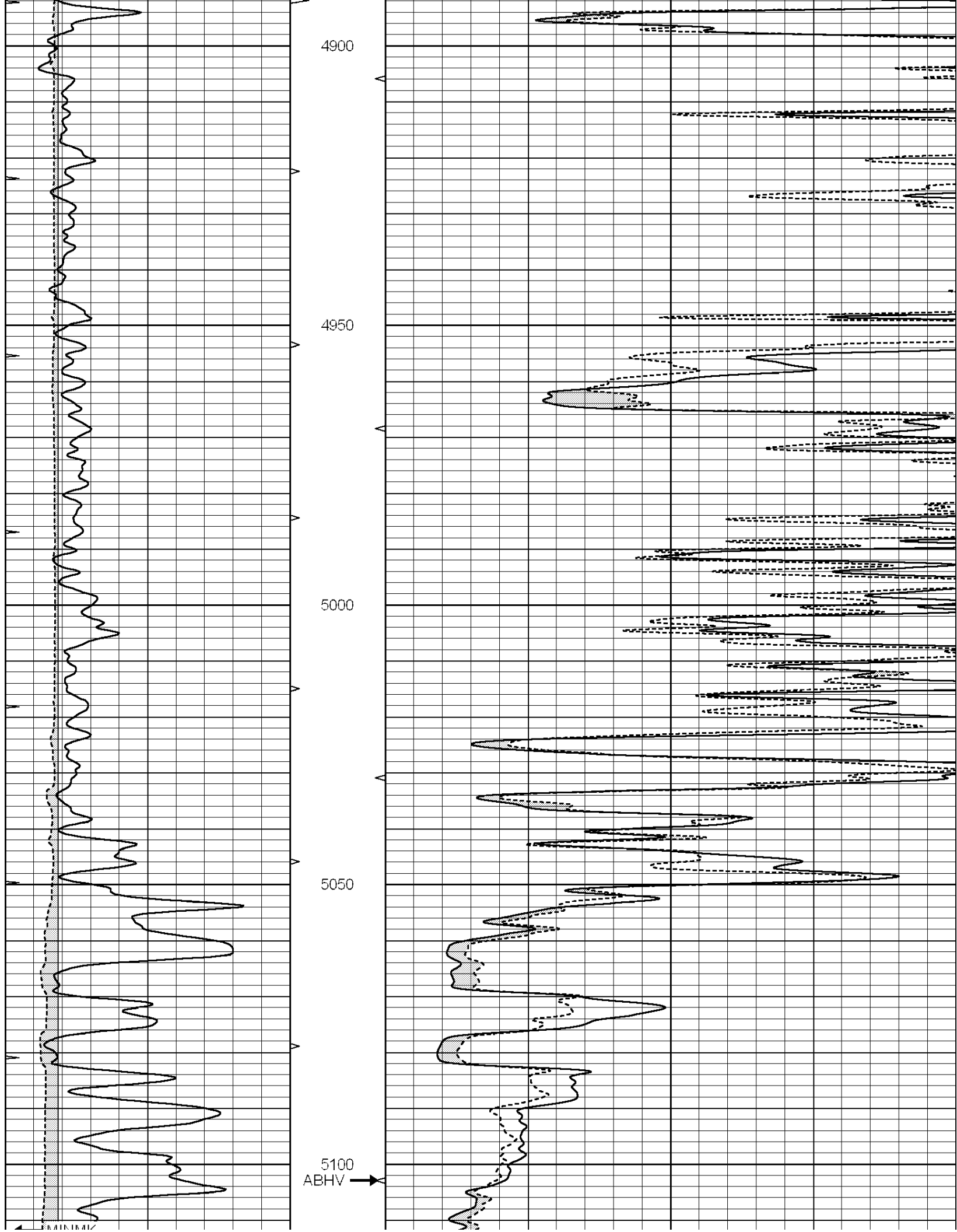
4700

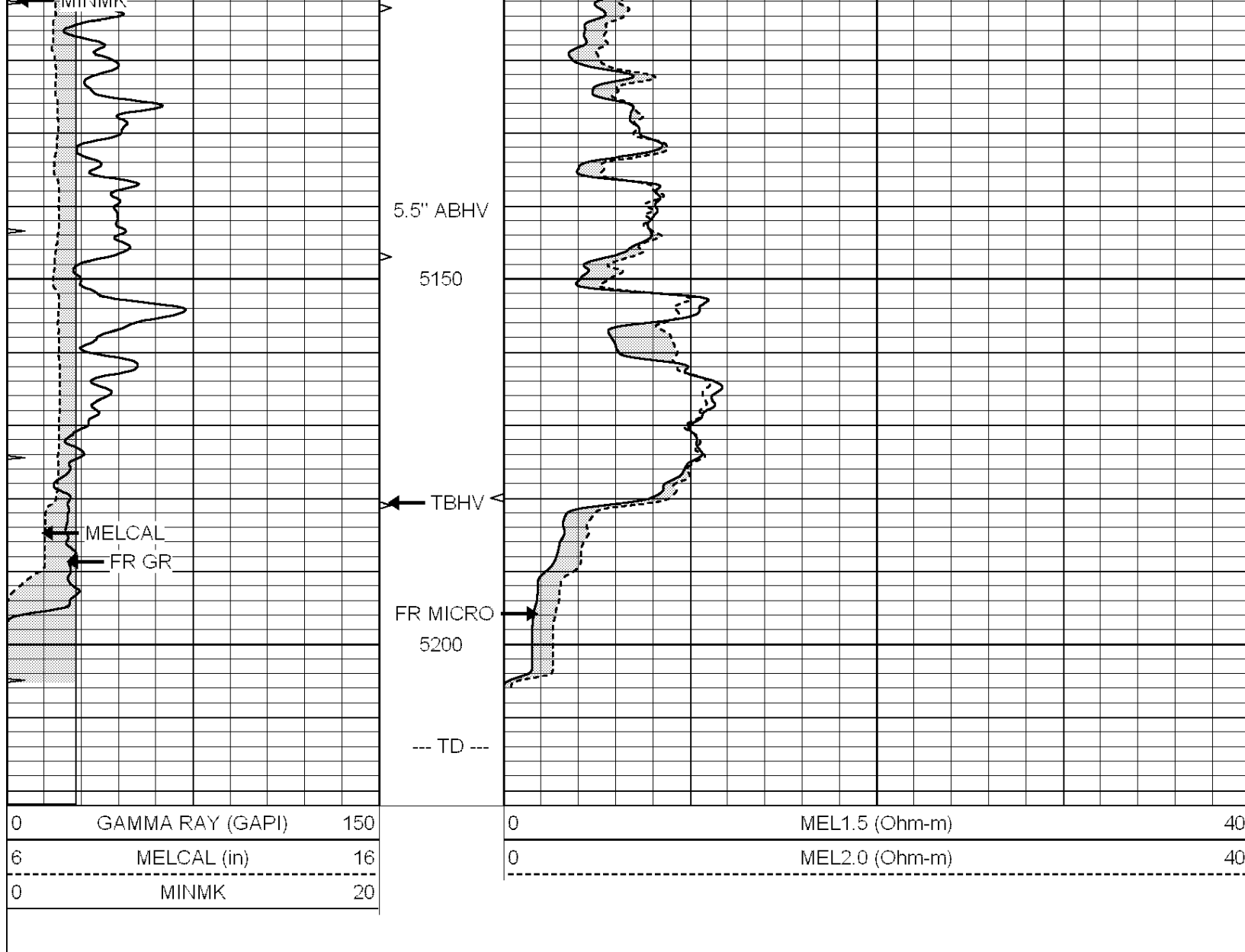
4750

4800

4850





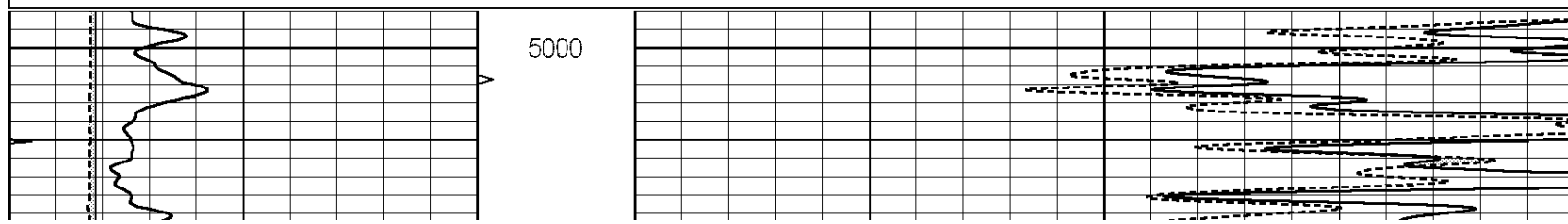


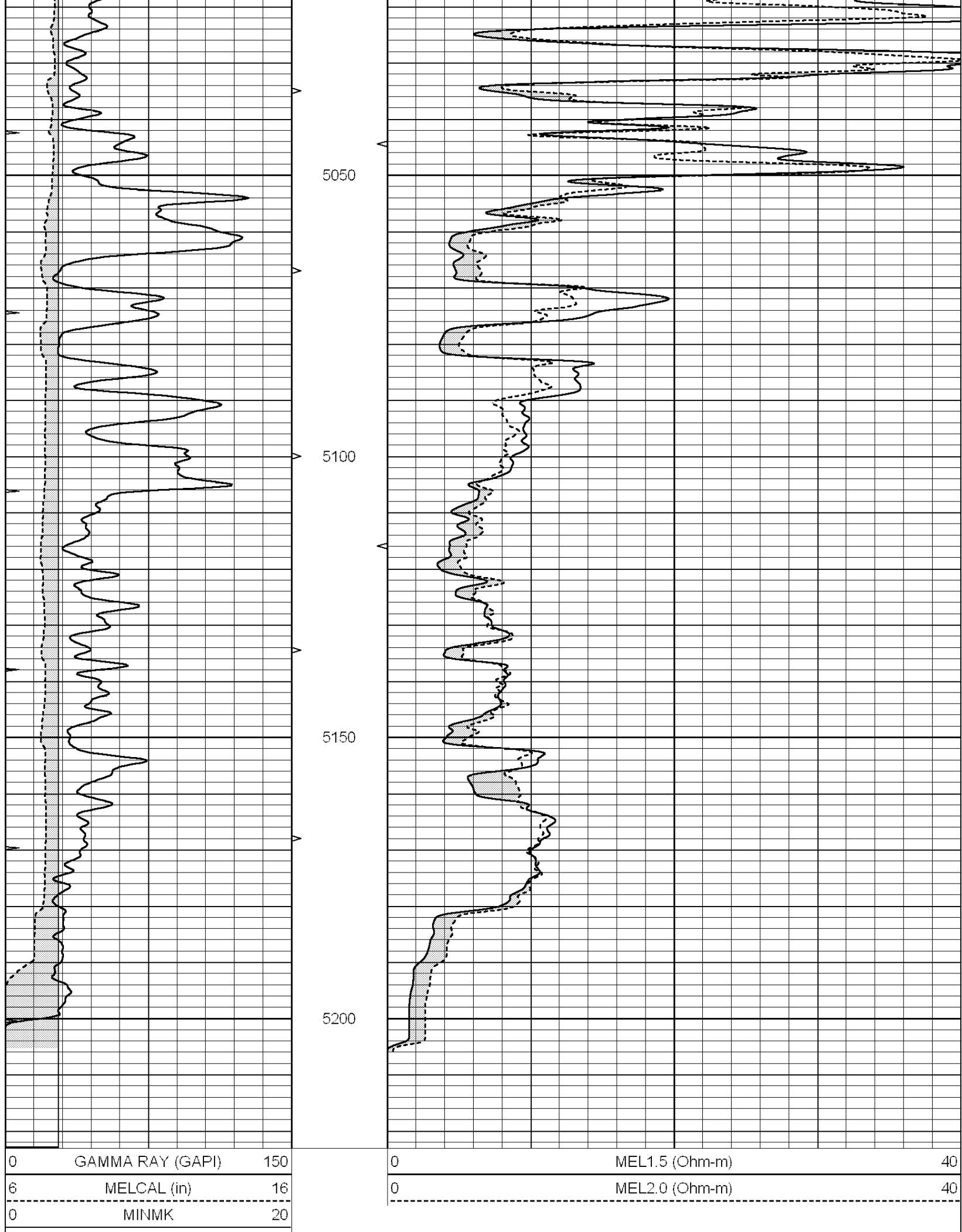
SUPERIOR
Hays,
Kansas

REPEAT SECTION

Database File: 007342pdn.db
 Dataset Pathname: pass4.1
 Presentation Format: micro
 Dataset Creation: Fri Aug 05 08:32:54 2011
 Charted by: Depth in Feet scaled 1:240

0	GAMMA RAY (GAPI)	150	0	MEL1.5 (Ohm-m)	40
6	MELCAL (in)	16	0	MEL2.0 (Ohm-m)	40
0	MINMK	20			





Calibration Report

Database File: 007342pdm.db
 Dataset Pathname: pass5.1
 Dataset Creation: Fri Aug 05 07:42:44 2011

MICRO Calibration Report

Serial Number:	Micro1
Tool Model:	ProbeL
Performed:	Fri Aug 05 06:38:18 2011

Caliper Calibration:	Gain=2.754	Offset=-1.205
References	Low Cal 7.700	High Cal 13.000
Readings	3.233	5.157

1.5" Calibration:	Gain=40.000	Offset=0.000
References	Low Cal 0.000	High Cal 20.000
Readings	0.003	0.844

2" Calibration:	Gain=28.000	Offset=0.400
References	Low Cal 0.000	High Cal 20.000
Readings	0.028	0.817

Gamma Ray Calibration Report

Serial Number:	GR5
Tool Model:	OPEN
Performed:	Fri Aug 05 03:36:27 2011

Calibrator Value:	1.0	GAPI
Background Reading:	0.0	cps
Calibrator Reading:	1.0	cps
Sensitivity:	0.6500	GAPI/cps