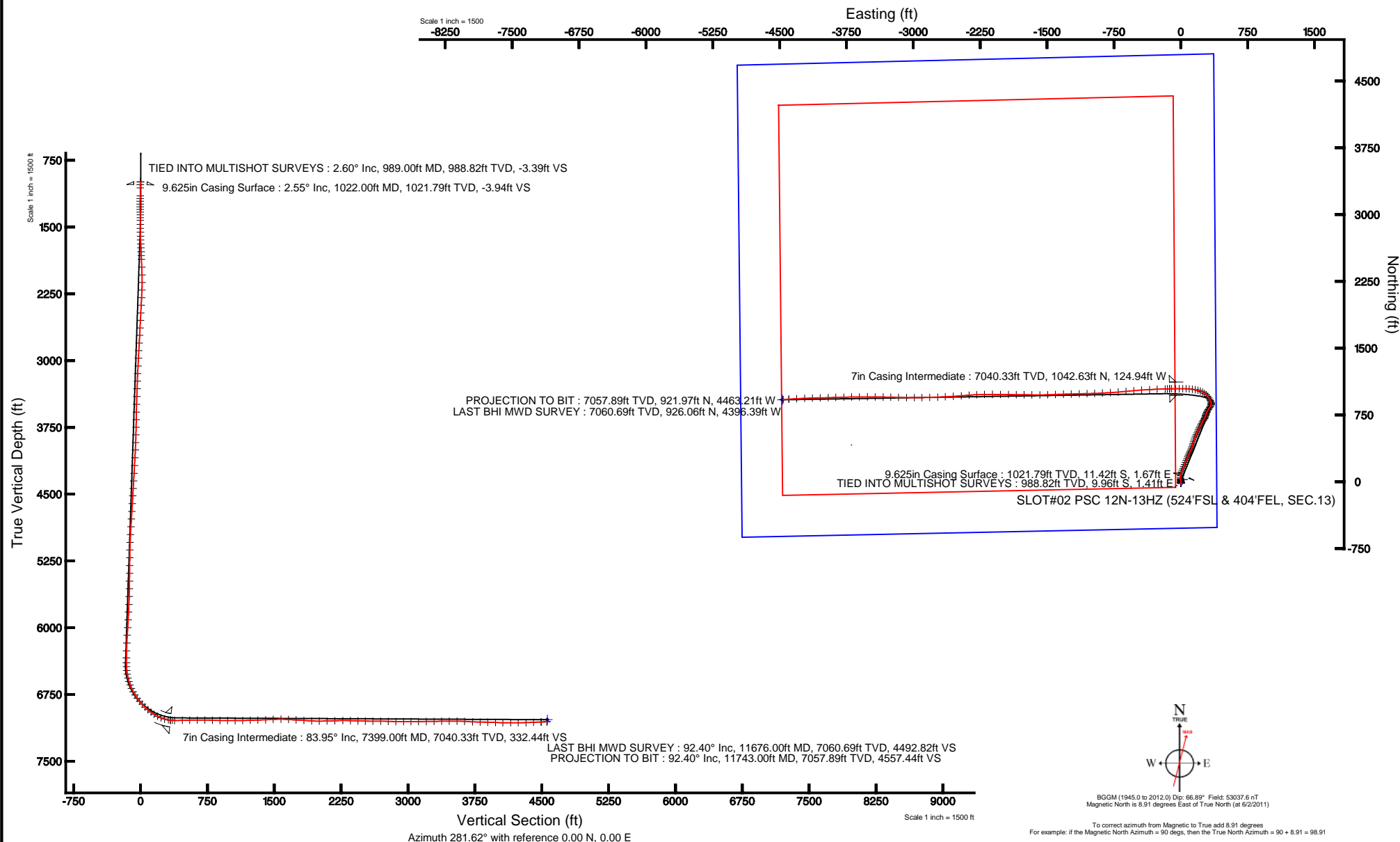


Location:	COLORADO	Slot:	SLOT#02 PSC 12N-13HZ (524'FSL & 404'FEL, SEC.13)
Field:	WELD COUNTY (KERR MCGEE)	Well:	PSC 12N-13HZ
Facility:	SEC.13-T3N-R68W	Wellbore:	PSC 12N-13HZ PWB



Plot reference wellpath is PSC 12N-13HZ (REV-C-0) PWP	
True vertical depths are referenced to XTREME 8 (RKB)	Grid System: NAD83 / Lambert Colorado SP, Northern Zone (501), US feet
Measured depths are referenced to XTREME 8 (RKB)	North Reference: True north
XTREME 8 (RKB) to Mean Sea Level: 4869 feet	Scale: True distance
Mean Sea Level to Mud line (At Slot: SLOT#02 PSC 12N-13HZ (524FSL & 404FEL, SEC.13)): 0 feet	Depths are in feet
Coordinates are in feet referenced to Slot	Created by: cookdann on 8/23/2011





# Actual Wellpath Report

PSC 12N-13HZ awp

Page 1 of 7



## REFERENCE WELLPATH IDENTIFICATION

Operator	ANADARKO E&P COMPANY LP	Slot	SLOT#02 PSC 12N-13HZ (524'FSL & 404'FEL, SEC.13)
Area	COLORADO	Well	PSC 12N-13HZ
Field	WELD COUNTY (KERR MCGEE)	Wellbore	PSC 12N-13HZ awb
Facility	SEC.13-T3N-R68W		

## REPORT SETUP INFORMATION

Projection System	NAD83 / Lambert Colorado SP, Northern Zone (501), US feet	Software System	WellArchitect® 3.0.1
North Reference	True	User	Cookdanm
Scale	0.999957	Report Generated	8/23/2011 at 3:46:03 PM
Convergence at slot	0.36° East	Database/Source file	WellArchitectDB/PSC_12N-13HZ_awb.xml

## WELLPATH LOCATION

	Local coordinates		Grid coordinates		Geographic coordinates	
	North[ft]	East[ft]	Easting[US ft]	Northing[US ft]	Latitude	Longitude
Slot Location	-21.78	-20.85	3155483.24	1323668.62	40°13'13.901"N	104°56'35.531"W
Facility Reference Pt			3155503.95	1323690.53	40°13'14.116"N	104°56'35.262"W
Field Reference Pt			3197771.84	1268891.29	40°04'09.600"N	104°47'36.000"W

## WELLPATH DATUM

Calculation method	Minimum curvature	XTREME 8 (RKB) to Facility Vertical Datum	4889.00ft
Horizontal Reference Pt	Slot	XTREME 8 (RKB) to Mean Sea Level	4889.00ft
Vertical Reference Pt	XTREME 8 (RKB)	XTREME 8 (RKB) to Mud Line at Slot (SLOT#02 PSC 12N-13HZ (524'FSL & 404'FEL, SEC.13))	4889.00ft
MD Reference Pt	XTREME 8 (RKB)	Section Origin	N 0.00, E 0.00 ft
Field Vertical Reference	Mean Sea Level	Section Azimuth	281.62°



# Actual Wellpath Report

PSC 12N-13HZ awp

Page 2 of 7



## REFERENCE WELLPATH IDENTIFICATION

Operator	ANADARKO E&P COMPANY LP	Slot	SLOT#02 PSC 12N-13HZ (524'FSL & 404'FEL, SEC.13)
Area	COLORADO	Well	PSC 12N-13HZ
Field	WELD COUNTY (KERR MCGEE)	Wellbore	PSC 12N-13HZ awb
Facility	SEC.13-T3N-R68W		

## WELLPATH DATA (148 stations) † = interpolated/extrapolated station

MD [ft]	Inclination [°]	Azimuth [°]	TVD [ft]	Vert Sect [ft]	North [ft]	East [ft]	Latitude	Longitude	DLS [°/100ft]	Comments
989.00	2.600	169.700	988.82	-3.39	-9.96	1.41	40°13'13.802"N	104°56'35.513"W	0.00	TIED INTO MULTISHOT SURVEYS
1022.00†	2.551	169.748	1021.79	-3.94	-11.42	1.67	40°13'13.788"N	104°56'35.509"W	0.15	9.625" SURFACE CASING
1057.00	2.500	169.800	1056.75	-4.51	-12.94	1.95	40°13'13.773"N	104°56'35.506"W	0.15	
1147.00	1.900	176.100	1146.69	-5.64	-16.36	2.40	40°13'13.739"N	104°56'35.500"W	0.72	
1178.00	1.900	176.400	1177.67	-5.92	-17.38	2.46	40°13'13.729"N	104°56'35.499"W	0.03	
1209.00	1.000	181.100	1208.66	-6.10	-18.17	2.49	40°13'13.721"N	104°56'35.499"W	2.93	
1240.00	0.500	162.400	1239.66	-6.22	-18.57	2.53	40°13'13.717"N	104°56'35.498"W	1.78	
1270.00	0.200	59.600	1269.66	-6.32	-18.66	2.61	40°13'13.716"N	104°56'35.497"W	1.93	
1301.00	0.900	342.900	1300.65	-6.24	-18.40	2.59	40°13'13.719"N	104°56'35.497"W	2.83	
1331.00	1.200	338.900	1330.65	-5.96	-17.89	2.40	40°13'13.724"N	104°56'35.500"W	1.03	
1362.00	1.600	1.700	1361.64	-5.71	-17.15	2.30	40°13'13.731"N	104°56'35.501"W	2.19	
1393.00	2.000	356.400	1392.62	-5.49	-16.18	2.28	40°13'13.741"N	104°56'35.501"W	1.40	
1424.00	2.600	2.900	1423.60	-5.24	-14.94	2.28	40°13'13.753"N	104°56'35.501"W	2.11	
1469.00	3.300	356.500	1468.54	-4.75	-12.62	2.25	40°13'13.776"N	104°56'35.502"W	1.72	
1513.00	3.900	3.800	1512.45	-4.22	-9.87	2.28	40°13'13.803"N	104°56'35.501"W	1.71	
1557.00	4.700	1.700	1556.33	-3.70	-6.57	2.43	40°13'13.836"N	104°56'35.499"W	1.85	
1602.00	5.700	359.400	1601.14	-2.91	-2.49	2.46	40°13'13.876"N	104°56'35.499"W	2.27	
1645.00	5.900	351.400	1643.92	-1.70	1.83	2.11	40°13'13.919"N	104°56'35.504"W	1.94	
1689.00	6.600	352.600	1687.66	-0.09	6.57	1.44	40°13'13.966"N	104°56'35.512"W	1.62	
1733.00	7.500	352.800	1731.33	1.66	11.93	0.76	40°13'14.019"N	104°56'35.521"W	2.05	
1777.00	8.000	352.900	1774.93	3.57	17.81	0.02	40°13'14.077"N	104°56'35.531"W	1.14	
1821.00	8.900	355.700	1818.45	5.49	24.25	-0.61	40°13'14.140"N	104°56'35.539"W	2.25	
1865.00	10.400	356.600	1861.83	7.45	31.61	-1.11	40°13'14.213"N	104°56'35.545"W	3.43	
1953.00	12.000	0.900	1948.15	11.21	48.68	-1.43	40°13'14.382"N	104°56'35.549"W	2.05	
2043.00	12.700	5.500	2036.07	14.01	67.89	-0.34	40°13'14.572"N	104°56'35.535"W	1.34	
2130.00	13.800	11.900	2120.75	14.98	87.56	2.72	40°13'14.766"N	104°56'35.496"W	2.11	
2219.00	14.000	21.300	2207.16	13.12	107.98	8.82	40°13'14.968"N	104°56'35.417"W	2.54	
2306.00	13.900	23.900	2291.59	9.13	127.34	16.88	40°13'15.159"N	104°56'35.313"W	0.73	
2395.00	15.200	22.300	2377.74	4.69	147.91	25.63	40°13'15.362"N	104°56'35.200"W	1.53	
2484.00	15.500	21.600	2463.56	0.47	169.76	34.44	40°13'15.578"N	104°56'35.087"W	0.40	
2571.00	16.600	22.600	2547.17	-3.91	192.04	43.49	40°13'15.799"N	104°56'34.970"W	1.30	
2659.00	16.200	20.800	2631.59	-8.26	215.12	52.68	40°13'16.027"N	104°56'34.852"W	0.73	
2746.00	15.200	22.400	2715.34	-12.33	237.01	61.34	40°13'16.243"N	104°56'34.740"W	1.25	
2835.00	14.400	24.400	2801.39	-16.96	257.88	70.36	40°13'16.449"N	104°56'34.624"W	1.07	
2923.00	13.100	24.400	2886.87	-21.59	276.93	79.00	40°13'16.637"N	104°56'34.512"W	1.48	
3011.00	12.300	23.900	2972.71	-25.79	294.58	86.92	40°13'16.812"N	104°56'34.410"W	0.92	
3099.00	12.000	28.000	3058.74	-30.36	311.23	95.01	40°13'16.976"N	104°56'34.306"W	1.04	
3187.00	11.100	22.800	3144.96	-34.58	327.11	102.59	40°13'17.133"N	104°56'34.208"W	1.56	
3274.00	11.400	22.400	3230.29	-37.81	342.78	109.11	40°13'17.288"N	104°56'34.124"W	0.36	
3361.00	11.500	20.600	3315.56	-40.77	358.85	115.44	40°13'17.447"N	104°56'34.043"W	0.43	
3451.00	11.500	21.500	3403.75	-43.71	375.60	121.88	40°13'17.612"N	104°56'33.960"W	0.20	
3539.00	12.000	21.300	3489.91	-46.75	392.28	128.42	40°13'17.777"N	104°56'33.875"W	0.57	
3629.00	11.500	17.000	3578.03	-49.17	409.58	134.44	40°13'17.948"N	104°56'33.798"W	1.12	
3716.00	13.000	14.900	3663.04	-50.54	427.33	139.49	40°13'18.124"N	104°56'33.733"W	1.80	
3804.00	14.000	16.900	3748.61	-52.08	447.08	145.13	40°13'18.319"N	104°56'33.660"W	1.25	



# Actual Wellpath Report

PSC 12N-13HZ awb

Page 3 of 7



## REFERENCE WELLPATH IDENTIFICATION

Operator	ANADARKO E&P COMPANY LP	Slot	SLOT#02 PSC 12N-13HZ (524'FSL & 404'FEL, SEC.13)
Area	COLORADO	Well	PSC 12N-13HZ
Field	WELD COUNTY (KERR MCGEE)	Wellbore	PSC 12N-13HZ awb
Facility	SEC.13-T3N-R68W		

## WELLPATH DATA (148 stations)

MD [ft]	Inclination [°]	Azimuth [°]	TVD [ft]	Vert Sect [ft]	North [ft]	East [ft]	Latitude	Longitude	DLS [°/100ft]	Comments
3892.00	15.200	17.200	3833.77	-54.18	468.28	151.64	40°13'18.528"N	104°56'33.576"W	1.37	
3981.00	14.700	19.300	3919.76	-56.83	490.09	158.82	40°13'18.744"N	104°56'33.483"W	0.83	
4067.00	13.500	23.800	4003.17	-60.40	509.57	166.48	40°13'18.936"N	104°56'33.385"W	1.89	
4157.00	13.700	25.400	4090.64	-65.16	528.81	175.29	40°13'19.126"N	104°56'33.271"W	0.47	
4247.00	13.500	24.300	4178.12	-70.00	548.01	184.18	40°13'19.316"N	104°56'33.156"W	0.36	
4337.00	14.200	25.500	4265.50	-74.95	567.55	193.26	40°13'19.509"N	104°56'33.039"W	0.84	
4425.00	14.400	24.600	4350.78	-80.00	587.24	202.46	40°13'19.704"N	104°56'32.921"W	0.34	
4513.00	13.000	22.900	4436.27	-84.39	606.31	210.87	40°13'19.892"N	104°56'32.812"W	1.66	
4599.00	12.500	28.300	4520.15	-88.95	623.42	219.05	40°13'20.061"N	104°56'32.707"W	1.50	
4687.00	11.900	28.200	4606.16	-94.27	639.80	227.85	40°13'20.223"N	104°56'32.593"W	0.68	
4776.00	12.500	27.200	4693.15	-99.48	656.45	236.59	40°13'20.388"N	104°56'32.481"W	0.71	
4865.00	11.700	28.900	4780.18	-104.75	672.92	245.35	40°13'20.551"N	104°56'32.368"W	0.98	
4952.00	10.000	32.900	4865.62	-110.11	686.98	253.72	40°13'20.690"N	104°56'32.260"W	2.14	
5041.00	8.300	33.400	4953.48	-115.29	698.84	261.45	40°13'20.807"N	104°56'32.160"W	1.91	
5130.00	7.400	27.000	5041.65	-119.20	709.31	267.59	40°13'20.910"N	104°56'32.081"W	1.41	
5217.00	7.200	19.200	5127.95	-121.40	719.45	271.93	40°13'21.010"N	104°56'32.025"W	1.16	
5305.00	6.900	20.300	5215.28	-122.93	729.61	275.57	40°13'21.111"N	104°56'31.978"W	0.37	
5393.00	6.800	18.500	5302.65	-124.35	739.51	279.06	40°13'21.209"N	104°56'31.933"W	0.27	
5481.00	6.600	15.500	5390.05	-125.31	749.33	282.07	40°13'21.306"N	104°56'31.895"W	0.46	
5568.00	6.500	18.200	5476.48	-126.22	758.82	284.94	40°13'21.399"N	104°56'31.857"W	0.37	
5655.00	6.700	21.900	5562.91	-127.69	768.21	288.37	40°13'21.492"N	104°56'31.813"W	0.54	
5744.00	7.700	24.600	5651.21	-129.95	778.45	292.79	40°13'21.593"N	104°56'31.756"W	1.19	
5833.00	8.200	26.500	5739.35	-132.92	789.55	298.10	40°13'21.703"N	104°56'31.688"W	0.63	
5921.00	8.300	29.400	5826.44	-136.47	800.70	304.02	40°13'21.813"N	104°56'31.611"W	0.49	
6009.00	8.400	35.700	5913.51	-141.03	811.45	310.89	40°13'21.920"N	104°56'31.523"W	1.05	
6097.00	8.600	35.300	6000.54	-146.30	822.04	318.44	40°13'22.024"N	104°56'31.426"W	0.24	
6184.00	8.500	33.900	6086.58	-151.35	832.69	325.79	40°13'22.129"N	104°56'31.331"W	0.27	
6272.00	8.300	29.600	6173.63	-155.77	843.61	332.55	40°13'22.237"N	104°56'31.244"W	0.75	
6360.00	7.700	22.400	6260.78	-158.83	854.58	337.94	40°13'22.346"N	104°56'31.174"W	1.33	
6442.00	7.800	19.700	6342.03	-160.64	864.90	341.91	40°13'22.448"N	104°56'31.123"W	0.46	
6496.00	7.600	12.100	6395.54	-161.19	871.84	343.89	40°13'22.516"N	104°56'31.097"W	1.92	
6540.00	9.500	354.800	6439.06	-160.16	878.30	344.17	40°13'22.580"N	104°56'31.094"W	7.22	
6584.00	13.300	346.100	6482.19	-156.93	886.84	342.63	40°13'22.664"N	104°56'31.114"W	9.46	
6628.00	16.400	338.500	6524.72	-151.35	897.53	339.13	40°13'22.770"N	104°56'31.159"W	8.31	
6671.00	20.500	334.700	6565.50	-143.51	909.99	333.69	40°13'22.893"N	104°56'31.229"W	9.93	
6714.00	24.200	331.500	6605.26	-133.30	924.55	326.26	40°13'23.037"N	104°56'31.325"W	9.06	
6758.00	28.100	328.700	6644.75	-120.43	941.34	316.57	40°13'23.203"N	104°56'31.450"W	9.29	
6802.00	30.100	321.000	6683.21	-104.83	958.78	304.24	40°13'23.375"N	104°56'31.609"W	9.64	
6846.00	33.000	313.300	6720.72	-86.10	975.58	288.56	40°13'23.541"N	104°56'31.811"W	11.27	
6890.00	35.300	305.900	6757.15	-64.30	991.26	269.54	40°13'23.696"N	104°56'32.056"W	10.78	
6935.00	37.900	298.200	6793.29	-39.18	1005.42	246.81	40°13'23.836"N	104°56'32.349"W	11.72	
6980.00	39.900	291.300	6828.32	-11.69	1017.20	221.16	40°13'23.953"N	104°56'32.680"W	10.60	
7024.00	42.600	284.500	6861.42	17.11	1026.07	193.58	40°13'24.040"N	104°56'33.035"W	11.89	
7068.00	45.700	280.600	6892.99	47.74	1032.69	163.67	40°13'24.106"N	104°56'33.421"W	9.37	
7112.00	49.500	276.400	6922.66	80.16	1037.46	131.55	40°13'24.153"N	104°56'33.835"W	11.14	



# Actual Wellpath Report

PSC 12N-13HZ awb

Page 4 of 7



## REFERENCE WELLPATH IDENTIFICATION

Operator	ANADARKO E&P COMPANY LP	Slot	SLOT#02 PSC 12N-13HZ (524'FSL & 404'FEL, SEC.13)
Area	COLORADO	Well	PSC 12N-13HZ
Field	WELD COUNTY (KERR MCGEE)	Wellbore	PSC 12N-13HZ awb
Facility	SEC.13-T3N-R68W		

## WELLPATH DATA (148 stations) † = interpolated/extrapolated station

MD [ft]	Inclination [°]	Azimuth [°]	TVD [ft]	Vert Sect [ft]	North [ft]	East [ft]	Latitude	Longitude	DLS [°/100ft]	Comments
7156.00	53.600	274.900	6950.02	114.42	1040.84	97.27	40°13'24.186"N	104°56'34.277"W	9.69	
7200.00	57.700	272.900	6974.84	150.41	1043.29	61.04	40°13'24.211"N	104°56'34.744"W	10.04	
7244.00	62.900	271.000	6996.64	188.07	1044.57	22.85	40°13'24.223"N	104°56'35.236"W	12.40	
7287.00	69.200	269.500	7014.08	226.57	1044.73	-16.42	40°13'24.225"N	104°56'35.743"W	14.99	
7331.00	74.400	268.600	7027.82	267.35	1044.04	-58.20	40°13'24.218"N	104°56'36.281"W	11.98	
7375.00	81.000	268.800	7037.19	309.23	1043.06	-101.16	40°13'24.208"N	104°56'36.835"W	15.01	
7399.00†	83.950	269.102	7040.33	332.44	1042.63	-124.94	40°13'24.204"N	104°56'37.142"W	12.35	7" INTERMEDIATE CASING
7423.00	86.900	269.400	7042.25	355.80	1042.31	-148.86	40°13'24.201"N	104°56'37.450"W	12.35	
7448.00	89.300	268.400	7043.08	380.17	1041.83	-173.84	40°13'24.196"N	104°56'37.772"W	10.40	
7538.00	91.700	267.400	7042.29	467.59	1038.54	-263.77	40°13'24.164"N	104°56'38.931"W	2.89	
7624.00	91.000	266.900	7040.26	550.84	1034.26	-349.64	40°13'24.121"N	104°56'40.038"W	1.00	
7712.00	90.300	266.100	7039.27	635.79	1028.89	-437.47	40°13'24.068"N	104°56'41.171"W	1.21	
7800.00	89.700	265.100	7039.27	720.37	1022.14	-525.21	40°13'24.001"N	104°56'42.302"W	1.33	
7888.00	88.100	264.300	7040.96	804.54	1014.01	-612.81	40°13'23.921"N	104°56'43.431"W	2.03	
7976.00	88.800	265.200	7043.34	888.72	1005.96	-700.41	40°13'23.842"N	104°56'44.560"W	1.30	
8065.00	89.300	267.000	7044.81	974.46	999.91	-789.18	40°13'23.782"N	104°56'45.705"W	2.10	
8153.00	89.800	266.800	7045.50	1059.56	995.15	-877.05	40°13'23.735"N	104°56'46.838"W	0.61	
8241.00	92.100	267.900	7044.04	1144.83	991.08	-964.94	40°13'23.694"N	104°56'47.971"W	2.90	
8327.00	91.000	268.700	7041.72	1228.48	988.53	-1050.87	40°13'23.669"N	104°56'49.078"W	1.58	
8414.00	91.300	268.600	7039.97	1313.24	986.48	-1137.83	40°13'23.649"N	104°56'50.199"W	0.36	
8504.00	93.700	268.800	7036.05	1400.87	984.44	-1227.71	40°13'23.629"N	104°56'51.358"W	2.68	
8592.00	91.900	268.300	7031.75	1486.49	982.22	-1315.57	40°13'23.607"N	104°56'52.491"W	2.12	
8682.00	90.200	267.800	7030.10	1573.95	979.16	-1405.50	40°13'23.576"N	104°56'53.650"W	1.97	
8769.00	86.500	267.900	7032.60	1658.40	975.90	-1492.39	40°13'23.544"N	104°56'54.770"W	4.25	
8857.00	86.100	270.100	7038.28	1744.09	974.36	-1580.19	40°13'23.529"N	104°56'55.902"W	2.54	
8946.00	86.600	270.600	7043.95	1831.20	974.91	-1669.01	40°13'23.534"N	104°56'57.047"W	0.79	
9034.00	87.000	270.800	7048.86	1917.47	975.98	-1756.86	40°13'23.545"N	104°56'58.180"W	0.51	
9121.00	90.400	270.500	7050.83	2002.84	976.97	-1843.82	40°13'23.554"N	104°56'59.301"W	3.92	
9210.00	90.900	271.100	7049.82	2090.25	978.21	-1932.81	40°13'23.567"N	104°57'00.448"W	0.88	
9300.00	92.900	270.500	7046.84	2178.60	979.46	-2022.74	40°13'23.579"N	104°57'01.607"W	2.32	
9390.00	90.100	270.000	7044.48	2266.79	979.86	-2112.70	40°13'23.583"N	104°57'02.767"W	3.16	
9478.00	88.400	269.100	7045.64	2352.83	979.17	-2200.69	40°13'23.576"N	104°57'03.901"W	2.19	
9566.00	88.200	267.200	7048.25	2438.37	976.33	-2288.60	40°13'23.548"N	104°57'05.035"W	2.17	
9652.00	88.900	266.300	7050.42	2521.46	971.45	-2374.43	40°13'23.500"N	104°57'06.141"W	1.33	
9740.00	89.700	264.800	7051.50	2606.01	964.62	-2462.16	40°13'23.432"N	104°57'07.272"W	1.93	
9829.00	90.000	267.000	7051.73	2691.68	958.26	-2550.92	40°13'23.369"N	104°57'08.417"W	2.49	
9919.00	87.600	266.800	7053.62	2778.70	953.40	-2640.76	40°13'23.321"N	104°57'09.575"W	2.68	
10005.00	89.300	267.700	7055.94	2861.97	949.27	-2726.63	40°13'23.280"N	104°57'10.682"W	2.24	
10095.00	89.700	268.600	7056.73	2949.49	946.37	-2816.58	40°13'23.251"N	104°57'11.841"W	1.09	
10181.00	89.400	268.600	7057.40	3033.27	944.27	-2902.55	40°13'23.230"N	104°57'12.950"W	0.35	
10268.00	91.400	269.900	7056.80	3118.24	943.13	-2989.53	40°13'23.219"N	104°57'14.071"W	2.74	
10355.00	90.300	271.400	7055.51	3203.64	944.11	-3076.52	40°13'23.229"N	104°57'15.192"W	2.14	
10444.00	91.400	271.600	7054.19	3291.24	946.44	-3165.47	40°13'23.252"N	104°57'16.339"W	1.26	
10532.00	91.000	271.100	7052.34	3377.81	948.52	-3253.43	40°13'23.272"N	104°57'17.473"W	0.73	
10618.00	89.400	271.100	7052.04	3462.36	950.17	-3339.41	40°13'23.288"N	104°57'18.581"W	1.86	



# Actual Wellpath Report

PSC 12N-13HZ awb

Page 5 of 7



## REFERENCE WELLPATH IDENTIFICATION

Operator	ANADARKO E&P COMPANY LP	Slot	SLOT#02 PSC 12N-13HZ (524'FSL & 404'FEL, SEC.13)
Area	COLORADO	Well	PSC 12N-13HZ
Field	WELD COUNTY (KERR MCGEE)	Wellbore	PSC 12N-13HZ awb
Facility	SEC.13-T3N-R68W		

## WELLPATH DATA (148 stations)

MD [ft]	Inclination [°]	Azimuth [°]	TVD [ft]	Vert Sect [ft]	North [ft]	East [ft]	Latitude	Longitude	DLS [°/100ft]	Comments
10706.00	90.500	270.900	7052.12	3548.86	951.70	-3427.40	40°13'23.303"N	104°57'19.716"W	1.27	
10794.00	86.900	269.900	7054.11	3635.14	952.32	-3515.35	40°13'23.309"N	104°57'20.850"W	4.25	
10884.00	87.100	269.300	7058.83	3723.04	951.69	-3605.23	40°13'23.303"N	104°57'22.008"W	0.70	
10972.00	88.800	269.100	7061.97	3808.92	950.46	-3693.16	40°13'23.290"N	104°57'23.142"W	1.95	
11060.00	89.400	268.700	7063.36	3894.75	948.77	-3781.13	40°13'23.274"N	104°57'24.276"W	0.82	
11148.00	87.000	267.800	7066.12	3980.31	946.09	-3869.04	40°13'23.247"N	104°57'25.409"W	2.91	
11235.00	89.000	268.500	7069.16	4064.86	943.28	-3955.94	40°13'23.219"N	104°57'26.530"W	2.44	
11323.00	90.400	268.800	7069.62	4150.61	941.21	-4043.91	40°13'23.199"N	104°57'27.664"W	1.63	
11411.00	90.000	268.200	7069.31	4236.31	938.90	-4131.88	40°13'23.176"N	104°57'28.798"W	0.82	
11500.00	91.800	267.400	7067.91	4322.72	935.49	-4220.80	40°13'23.142"N	104°57'29.944"W	2.21	
11588.00	92.600	266.900	7064.53	4407.87	931.12	-4308.62	40°13'23.098"N	104°57'31.076"W	1.07	
11676.00	92.400	266.500	7060.69	4492.82	926.06	-4396.39	40°13'23.048"N	104°57'32.208"W	0.51	LAST BHI MWD SURVEY
11743.00	92.400	266.500	7057.89	4557.44	921.97	-4463.21	40°13'23.008"N	104°57'33.069"W	0.00	PROJECTION TO BIT

## HOLE & CASING SECTIONS - Ref Wellbore: PSC 12N-13HZ awb Ref Wellpath: PSC 12N-13HZ awb

String/Diameter	Start MD [ft]	End MD [ft]	Interval [ft]	Start TVD [ft]	End TVD [ft]	Start N/S [ft]	Start E/W [ft]	End N/S [ft]	End E/W [ft]
9.625in Casing Surface	17.00	1022.00	1005.00	17.00	1021.79	-9.96	1.41	-11.42	1.67
8.75in Open Hole	1022.00	7480.00	6458.00	1021.79	7043.23	-11.42	1.67	1040.84	-205.82
7in Casing Intermediate	17.00	7399.00	7382.00	17.00	7040.33	-9.96	1.41	1042.63	-124.94
6.125in Open Hole	7480.00	11743.00	4263.00	7043.23	7057.89	1040.84	-205.82	921.97	-4463.21



# Actual Wellpath Report

PSC 12N-13HZ awp

Page 6 of 7



## REFERENCE WELLPATH IDENTIFICATION

Operator	ANADARKO E&P COMPANY LP	Slot	SLOT#02 PSC 12N-13HZ (524'FSL & 404'FEL, SEC.13)
Area	COLORADO	Well	PSC 12N-13HZ
Field	WELD COUNTY (KERR MCGEE)	Wellbore	PSC 12N-13HZ awb
Facility	SEC.13-T3N-R68W		

## TARGETS

Name	MD [ft]	TVD [ft]	North [ft]	East [ft]	Grid East [US ft]	Grid North [US ft]	Latitude	Longitude	Shape
PSC PAD SEC. 13 SECTION LINES		1.00	21.86	20.94	3155504.04	1323690.61	40°13'14.117"N	104°56'35.261"W	polygon
PSC 12N-13HZ BHL ON PLAT (1500'FSL & 460'FWL, REV-1)		7035.00	919.58	-4470.50	3151007.26	1324560.07	40°13'22.984"N	104°57'33.163"W	point
PSC PAD SEC. 13 HARDLINE (460' SETBACK)		7248.00	21.86	20.94	3155504.04	1323690.61	40°13'14.117"N	104°56'35.261"W	polygon

## WELLPATH COMPOSITION - Ref Wellbore: PSC 12N-13HZ awb Ref Wellpath: PSC 12N-13HZ awp

Start MD [ft]	End MD [ft]	Positional Uncertainty Model	Log Name/Comment	Wellbore
989.00	11676.00	NaviTrak (Standard)	bhi mwd surveys <59-11676>	PSC 12N-13HZ awb
11676.00	11743.00	Blind Drilling (std)	Projection to bit	PSC 12N-13HZ awb



# Actual Wellpath Report

PSC 12N-13HZ awb

Page 7 of 7



## REFERENCE WELLPATH IDENTIFICATION

Operator	ANADARKO E&P COMPANY LP	Slot	SLOT#02 PSC 12N-13HZ (524'FSL & 404'FEL, SEC.13)
Area	COLORADO	Well	PSC 12N-13HZ
Field	WELD COUNTY (KERR MCGEE)	Wellbore	PSC 12N-13HZ awb
Facility	SEC.13-T3N-R68W		

## WELLPATH COMMENTS

MD [ft]	Inclination [°]	Azimuth [°]	TVD [ft]	Comment
989.00	2.600	169.700	988.82	TIED INTO MULTISHOT SURVEYS
1022.00	2.551	169.748	1021.79	9.625" SURFACE CASING
7399.00	83.950	269.102	7040.33	7" INTERMEDIATE CASING
11676.00	92.400	266.500	7060.69	LAST BHI MWD SURVEY
11743.00	92.400	266.500	7057.89	PROJECTION TO BIT