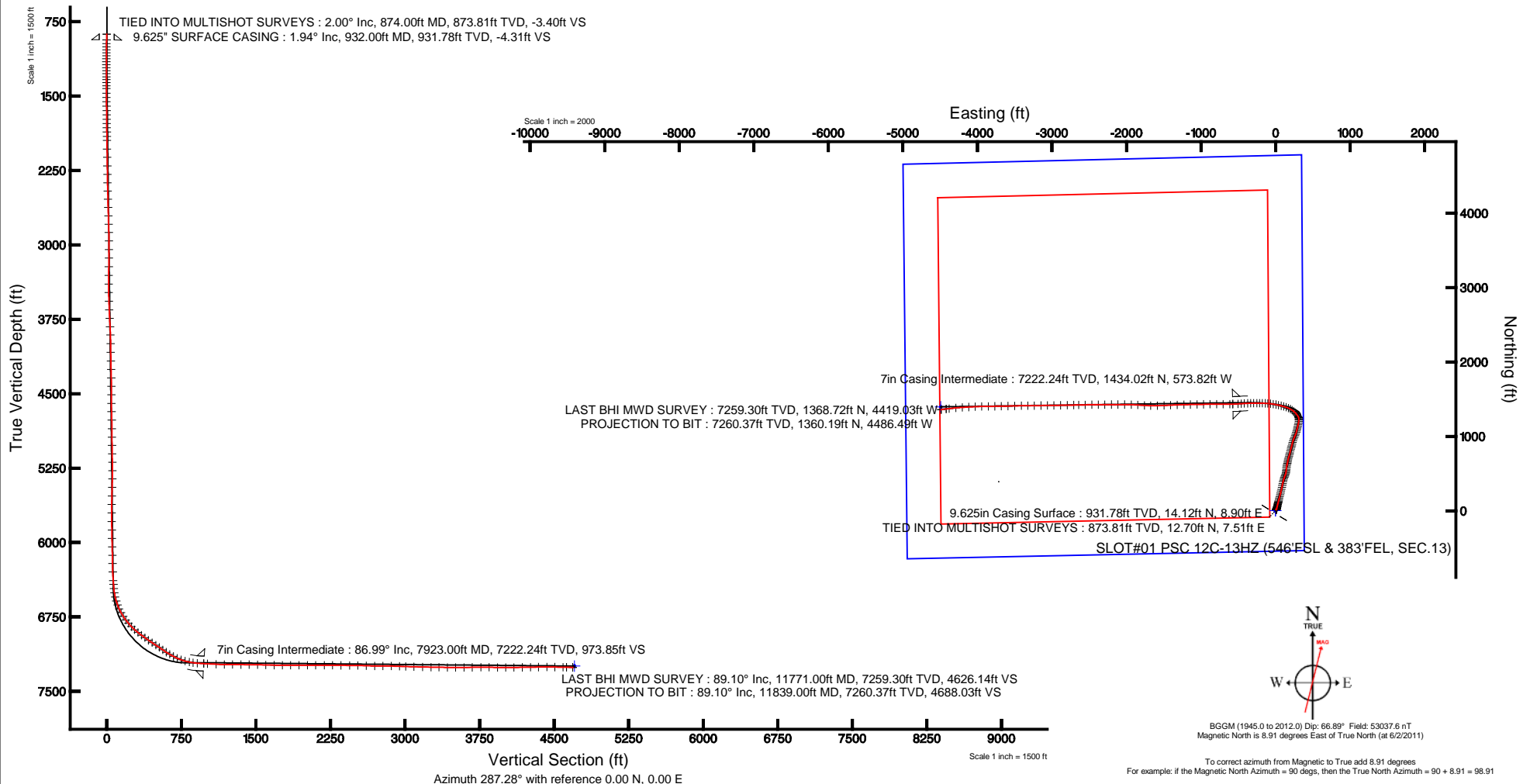


# ANADARKO E&P COMPANY LP

Location: COLORADO Slot: SLOT#01 PSC 12C-13HZ (546'FSL & 383'FEL, SEC.13)  
 Field: WELD COUNTY (KERR MCGEE) Well: PSC 12C-13HZ  
 Facility: SEC.13-T3N-R68W Wellbore: PSC 12C-13HZ PWB



Plot reference wellpath is PSC 12C-13HZ (REV-A.0) PWP	
True vertical depths are referenced to XTREME 8 (RKB)	Grid System: NAD83 / Lambert Colorado SP, Northern Zone (501), US feet
Measured depths are referenced to XTREME 8 (RKB)	North Reference: True north
XTREME 8 (RKB) to Mean Sea Level: 4888 feet	Scale: True distance
Mean Sea Level to Mud line (At Slot: SLOT#01 PSC 12C-13HZ (546'FSL & 383'FEL, SEC.13): 0 feet	Depths are in feet
Coordinates are in feet referenced to Slot	Created by: cookdanm on 8/23/2011





# Actual Wellpath Report

PSC 12C-13HZ AWP

Page 1 of 7



## REFERENCE WELLPATH IDENTIFICATION

Operator	ANADARKO E&P COMPANY LP	Slot	SLOT#01 PSC 12C-13HZ (546'FSL & 383'FEL, SEC.13)
Area	COLORADO	Well	PSC 12C-13HZ
Field	WELD COUNTY (KERR MCGEE)	Wellbore	PSC 12C-13HZ AWB
Facility	SEC.13-T3N-R68W		

## REPORT SETUP INFORMATION

Projection System	NAD83 / Lambert Colorado SP, Northern Zone (501), US feet	Software System	WellArchitect® 3.0.1
North Reference	True	User	Cookdanm
Scale	0.999957	Report Generated	8/23/2011 at 3:21:11 PM
Convergence at slot	0.36° East	Database/Source file	WellArchitectDB/PSC_12C-13HZ_AWB.xml

## WELLPATH LOCATION

	Local coordinates		Grid coordinates		Geographic coordinates	
	North[ft]	East[ft]	Easting[US ft]	Northing[US ft]	Latitude	Longitude
Slot Location	0.08	0.09	3155504.04	1323690.61	40°13'14.117"N	104°56'35.261"W
Facility Reference Pt			3155503.95	1323690.53	40°13'14.116"N	104°56'35.262"W
Field Reference Pt			3197771.84	1268891.29	40°04'09.600"N	104°47'36.000"W

## WELLPATH DATUM

Calculation method	Minimum curvature	XTREME 8 (RKB) to Facility Vertical Datum	4888.00ft
Horizontal Reference Pt	Slot	XTREME 8 (RKB) to Mean Sea Level	4888.00ft
Vertical Reference Pt	XTREME 8 (RKB)	XTREME 8 (RKB) to Mud Line at Slot (SLOT#01 PSC 12C-13HZ (546'FSL & 383'FEL, SEC.13))	4888.00ft
MD Reference Pt	XTREME 8 (RKB)	Section Origin	N 0.00, E 0.00 ft
Field Vertical Reference	Mean Sea Level	Section Azimuth	287.28°



# Actual Wellpath Report

PSC 12C-13HZ AWP

Page 2 of 7



## REFERENCE WELLPATH IDENTIFICATION

Operator	ANADARKO E&P COMPANY LP	Slot	SLOT#01 PSC 12C-13HZ (546'FSL & 383'FEL, SEC.13)
Area	COLORADO	Well	PSC 12C-13HZ
Field	WELD COUNTY (KERR MCGEE)	Wellbore	PSC 12C-13HZ AWP
Facility	SEC.13-T3N-R68W		

## WELLPATH DATA (159 stations) † = interpolated/extrapolated station

MD [ft]	Inclination [°]	Azimuth [°]	TVD [ft]	Vert Sect [ft]	North [ft]	East [ft]	Latitude	Longitude	DLS [°/100ft]	Comments
874.00	2.000	42.740	873.81	-3.40	12.70	7.51	40°13'14.242"N	104°56'35.164"W	0.00	TIED INTO MULTISHOT SURVEYS
932.00†	1.937	46.031	931.78	-4.31	14.12	8.90	40°13'14.256"N	104°56'35.146"W	0.22	9.625" SURFACE CASING
970.00	1.900	48.300	969.75	-4.94	14.99	9.84	40°13'14.265"N	104°56'35.134"W	0.22	
1001.00	1.700	47.000	1000.74	-5.43	15.64	10.56	40°13'14.271"N	104°56'35.125"W	0.66	
1032.00	1.700	46.000	1031.73	-5.88	16.28	11.22	40°13'14.278"N	104°56'35.116"W	0.10	
1062.00	2.000	30.800	1061.71	-6.22	17.04	11.81	40°13'14.285"N	104°56'35.109"W	1.91	
1092.00	2.400	32.600	1091.69	-6.51	18.02	12.42	40°13'14.295"N	104°56'35.101"W	1.35	
1122.00	2.700	21.400	1121.66	-6.72	19.20	13.01	40°13'14.307"N	104°56'35.093"W	1.93	
1153.00	2.900	17.200	1152.62	-6.77	20.63	13.51	40°13'14.321"N	104°56'35.087"W	0.92	
1183.00	3.300	15.000	1182.58	-6.74	22.19	13.96	40°13'14.336"N	104°56'35.081"W	1.39	
1213.00	3.800	14.900	1212.52	-6.66	23.98	14.44	40°13'14.354"N	104°56'35.075"W	1.67	
1243.00	4.200	10.600	1242.45	-6.49	26.03	14.90	40°13'14.374"N	104°56'35.069"W	1.67	
1274.00	4.800	14.600	1273.35	-6.30	28.40	15.43	40°13'14.397"N	104°56'35.062"W	2.18	
1305.00	5.100	15.900	1304.24	-6.21	30.98	16.14	40°13'14.423"N	104°56'35.053"W	1.03	
1334.00	5.800	19.800	1333.10	-6.24	33.59	16.99	40°13'14.449"N	104°56'35.042"W	2.73	
1364.00	6.100	20.200	1362.94	-6.39	36.52	18.05	40°13'14.478"N	104°56'35.028"W	1.01	
1395.00	6.400	16.600	1393.76	-6.45	39.72	19.11	40°13'14.509"N	104°56'35.014"W	1.59	
1425.00	7.200	15.200	1423.55	-6.36	43.14	20.08	40°13'14.543"N	104°56'35.002"W	2.72	
1472.00	8.200	13.100	1470.12	-6.01	49.24	21.61	40°13'14.603"N	104°56'34.982"W	2.21	
1516.00	8.500	13.600	1513.66	-5.58	55.46	23.09	40°13'14.665"N	104°56'34.963"W	0.70	
1559.00	8.600	12.200	1556.18	-5.09	61.69	24.52	40°13'14.726"N	104°56'34.945"W	0.54	
1604.00	9.100	12.800	1600.64	-4.51	68.45	26.02	40°13'14.793"N	104°56'34.925"W	1.13	
1648.00	9.700	13.000	1644.05	-3.96	75.45	27.62	40°13'14.862"N	104°56'34.905"W	1.37	
1692.00	10.100	12.600	1687.40	-3.37	82.83	29.30	40°13'14.935"N	104°56'34.883"W	0.92	
1737.00	10.000	15.300	1731.71	-2.92	90.45	31.19	40°13'15.011"N	104°56'34.859"W	1.07	
1780.00	9.800	16.200	1774.07	-2.72	97.57	33.19	40°13'15.081"N	104°56'34.833"W	0.59	
1825.00	10.200	14.100	1818.38	-2.42	105.11	35.23	40°13'15.155"N	104°56'34.807"W	1.20	
1869.00	11.200	14.600	1861.62	-2.01	113.02	37.26	40°13'15.234"N	104°56'34.780"W	2.28	
1913.00	12.100	14.800	1904.71	-1.61	121.62	39.52	40°13'15.319"N	104°56'34.751"W	2.05	
1956.00	13.000	14.800	1946.68	-1.21	130.65	41.90	40°13'15.408"N	104°56'34.721"W	2.09	
2044.00	13.500	12.300	2032.34	0.11	150.25	46.62	40°13'15.602"N	104°56'34.660"W	0.86	
2130.00	13.800	13.400	2115.91	1.68	170.04	51.13	40°13'15.797"N	104°56'34.602"W	0.46	
2220.00	14.600	15.000	2203.16	2.86	191.44	56.56	40°13'16.009"N	104°56'34.532"W	0.99	
2308.00	15.600	15.000	2288.12	3.77	213.58	62.49	40°13'16.227"N	104°56'34.455"W	1.14	
2396.00	16.900	13.800	2372.60	5.01	237.43	68.60	40°13'16.463"N	104°56'34.376"W	1.53	
2484.00	17.500	12.500	2456.67	6.89	262.77	74.52	40°13'16.714"N	104°56'34.300"W	0.81	
2571.00	18.300	13.300	2539.46	8.93	288.84	80.49	40°13'16.971"N	104°56'34.223"W	0.96	
2658.00	18.100	12.800	2622.10	10.93	315.31	86.63	40°13'17.233"N	104°56'34.144"W	0.29	
2747.00	16.600	10.800	2707.05	13.45	341.28	92.07	40°13'17.489"N	104°56'34.074"W	1.81	
2834.00	16.800	12.100	2790.38	15.98	365.78	97.04	40°13'17.731"N	104°56'34.010"W	0.49	
2922.00	15.300	12.700	2874.95	18.06	389.54	102.26	40°13'17.966"N	104°56'33.943"W	1.71	
3010.00	13.700	13.900	2960.15	19.60	410.99	107.31	40°13'18.178"N	104°56'33.877"W	1.85	
3098.00	12.200	19.200	3045.91	19.90	429.88	112.88	40°13'18.365"N	104°56'33.806"W	2.17	
3186.00	11.500	19.400	3132.03	19.27	446.94	118.85	40°13'18.533"N	104°56'33.729"W	0.80	
3274.00	10.900	22.500	3218.36	18.18	462.90	124.95	40°13'18.691"N	104°56'33.650"W	0.97	



# Actual Wellpath Report

PSC 12C-13HZ AWP

Page 3 of 7



## REFERENCE WELLPATH IDENTIFICATION

Operator	ANADARKO E&P COMPANY LP	Slot	SLOT#01 PSC 12C-13HZ (546'FSL & 383'FEL, SEC.13)
Area	COLORADO	Well	PSC 12C-13HZ
Field	WELD COUNTY (KERR MCGEE)	Wellbore	PSC 12C-13HZ AWP
Facility	SEC.13-T3N-R68W		

## WELLPATH DATA (159 stations)

MD [ft]	Inclination [°]	Azimuth [°]	TVD [ft]	Vert Sect [ft]	North [ft]	East [ft]	Latitude	Longitude	DLS [°/100ft]	Comments
3363.00	10.500	20.600	3305.81	16.95	478.27	131.02	40°13'18.843"N	104°56'33.572"W	0.60	
3452.00	10.000	18.100	3393.39	16.37	493.20	136.27	40°13'18.991"N	104°56'33.504"W	0.75	
3540.00	10.000	11.300	3480.06	17.05	507.96	140.14	40°13'19.136"N	104°56'33.454"W	1.34	
3629.00	10.300	6.400	3567.66	19.36	523.44	142.54	40°13'19.289"N	104°56'33.423"W	1.03	
3717.00	12.200	6.400	3653.97	22.60	540.50	144.46	40°13'19.458"N	104°56'33.399"W	2.16	
3804.00	13.100	5.100	3738.86	26.42	559.46	146.36	40°13'19.645"N	104°56'33.374"W	1.08	
3892.00	15.000	6.000	3824.22	30.75	580.72	148.44	40°13'19.855"N	104°56'33.347"W	2.17	
3979.00	13.300	9.700	3908.58	34.27	601.78	151.30	40°13'20.064"N	104°56'33.310"W	2.21	
4068.00	11.300	13.700	3995.53	36.16	620.35	155.09	40°13'20.247"N	104°56'33.261"W	2.44	
4158.00	10.600	12.500	4083.89	37.40	637.00	158.97	40°13'20.412"N	104°56'33.211"W	0.82	
4246.00	12.100	12.100	4170.17	38.91	653.92	162.66	40°13'20.579"N	104°56'33.164"W	1.71	
4334.00	13.800	10.700	4255.93	40.95	673.25	166.54	40°13'20.770"N	104°56'33.114"W	1.96	
4422.00	14.800	13.900	4341.20	42.81	694.47	171.19	40°13'20.980"N	104°56'33.054"W	1.45	
4510.00	13.800	15.800	4426.48	43.74	715.48	176.74	40°13'21.187"N	104°56'32.982"W	1.26	
4597.00	14.100	16.800	4510.91	44.10	735.61	182.63	40°13'21.386"N	104°56'32.906"W	0.44	
4687.00	14.600	15.600	4598.10	44.52	757.03	188.85	40°13'21.598"N	104°56'32.826"W	0.65	
4774.00	16.300	12.800	4681.96	45.80	779.50	194.51	40°13'21.820"N	104°56'32.753"W	2.13	
4862.00	16.100	12.800	4766.46	47.72	803.44	199.95	40°13'22.056"N	104°56'32.683"W	0.23	
4952.00	15.900	15.300	4852.98	49.12	827.50	205.96	40°13'22.294"N	104°56'32.606"W	0.80	
5040.00	15.500	15.200	4937.69	49.96	850.48	212.23	40°13'22.521"N	104°56'32.525"W	0.46	
5127.00	15.800	15.600	5021.47	50.73	873.10	218.46	40°13'22.745"N	104°56'32.444"W	0.37	
5215.00	16.100	12.500	5106.08	52.09	896.56	224.32	40°13'22.977"N	104°56'32.369"W	1.03	
5303.00	15.300	14.700	5190.80	53.63	919.70	229.91	40°13'23.205"N	104°56'32.297"W	1.13	
5391.00	15.400	17.400	5275.66	54.13	942.08	236.35	40°13'23.426"N	104°56'32.214"W	0.82	
5478.00	15.800	21.100	5359.46	53.32	964.15	244.07	40°13'23.645"N	104°56'32.114"W	1.23	
5567.00	15.400	22.700	5445.18	51.39	986.36	252.99	40°13'23.864"N	104°56'31.999"W	0.66	
5657.00	15.100	23.400	5532.01	49.01	1008.14	262.26	40°13'24.079"N	104°56'31.880"W	0.39	
5746.00	15.000	22.100	5617.96	46.81	1029.45	271.20	40°13'24.290"N	104°56'31.765"W	0.40	
5834.00	14.700	16.700	5703.02	45.97	1050.70	278.69	40°13'24.500"N	104°56'31.668"W	1.61	
5924.00	14.000	12.700	5790.22	46.95	1072.26	284.36	40°13'24.713"N	104°56'31.595"W	1.35	
6011.00	13.900	12.800	5874.65	48.61	1092.72	288.99	40°13'24.915"N	104°56'31.535"W	0.12	
6098.00	13.300	13.800	5959.21	50.03	1112.62	293.70	40°13'25.112"N	104°56'31.475"W	0.74	
6186.00	14.400	11.900	6044.65	51.67	1133.16	298.37	40°13'25.315"N	104°56'31.414"W	1.35	
6274.00	14.800	12.800	6129.81	53.57	1154.83	303.11	40°13'25.529"N	104°56'31.353"W	0.52	
6361.00	14.800	12.900	6213.92	55.29	1176.50	308.06	40°13'25.743"N	104°56'31.289"W	0.03	
6449.00	14.700	9.300	6299.02	57.70	1198.47	312.37	40°13'25.960"N	104°56'31.234"W	1.05	
6537.00	13.800	359.900	6384.33	62.38	1219.99	314.16	40°13'26.173"N	104°56'31.211"W	2.82	
6577.00	14.000	356.400	6423.16	65.53	1229.59	313.84	40°13'26.268"N	104°56'31.215"W	2.16	
6620.00	14.000	358.200	6464.88	69.09	1239.98	313.35	40°13'26.370"N	104°56'31.221"W	1.01	
6665.00	15.500	343.400	6508.41	74.22	1251.19	311.46	40°13'26.481"N	104°56'31.245"W	8.98	
6708.00	17.400	333.000	6549.66	81.91	1262.43	306.90	40°13'26.592"N	104°56'31.304"W	8.13	
6752.00	21.300	327.000	6591.17	92.66	1275.00	299.56	40°13'26.716"N	104°56'31.399"W	9.94	
6795.00	23.900	322.100	6630.87	105.82	1288.42	289.95	40°13'26.849"N	104°56'31.523"W	7.46	
6840.00	28.400	319.100	6671.25	122.40	1303.71	277.34	40°13'27.000"N	104°56'31.685"W	10.42	
6884.00	31.800	315.500	6709.32	141.52	1319.90	262.36	40°13'27.160"N	104°56'31.879"W	8.75	



# Actual Wellpath Report

PSC 12C-13HZ AWP

Page 4 of 7



## REFERENCE WELLPATH IDENTIFICATION

Operator	ANADARKO E&P COMPANY LP	Slot	SLOT#01 PSC 12C-13HZ (546'FSL & 383'FEL, SEC.13)
Area	COLORADO	Well	PSC 12C-13HZ
Field	WELD COUNTY (KERR MCGEE)	Wellbore	PSC 12C-13HZ AWB
Facility	SEC.13-T3N-R68W		

## WELLPATH DATA (159 stations) † = interpolated/extrapolated station

MD [ft]	Inclination [°]	Azimuth [°]	TVD [ft]	Vert Sect [ft]	North [ft]	East [ft]	Latitude	Longitude	DLS [°/100ft]	Comments
6929.00	36.000	311.200	6746.66	164.07	1337.07	244.08	40°13'27.330"N	104°56'32.114"W	10.74	
6974.00	37.300	304.700	6782.78	189.18	1353.55	222.91	40°13'27.493"N	104°56'32.387"W	9.09	
7017.00	40.800	297.700	6816.19	215.45	1367.51	199.75	40°13'27.630"N	104°56'32.686"W	13.08	
7062.00	43.800	291.800	6849.48	245.45	1380.14	172.25	40°13'27.755"N	104°56'33.040"W	11.05	
7107.00	47.800	289.500	6880.85	277.64	1391.49	142.07	40°13'27.867"N	104°56'33.429"W	9.61	
7151.00	51.900	285.900	6909.22	311.26	1401.68	110.03	40°13'27.968"N	104°56'33.842"W	11.22	
7195.00	53.700	285.400	6935.82	346.29	1411.13	76.29	40°13'28.062"N	104°56'34.277"W	4.19	
7239.00	54.300	282.500	6961.68	381.82	1419.71	41.75	40°13'28.146"N	104°56'34.723"W	5.50	
7283.00	55.100	281.700	6987.11	417.58	1427.24	6.63	40°13'28.221"N	104°56'35.175"W	2.35	
7326.00	56.700	279.600	7011.22	452.95	1433.81	-28.36	40°13'28.286"N	104°56'35.626"W	5.50	
7371.00	57.000	276.600	7035.83	490.13	1439.12	-65.65	40°13'28.338"N	104°56'36.107"W	5.62	
7414.00	56.500	273.800	7059.41	525.29	1442.38	-101.46	40°13'28.370"N	104°56'36.569"W	5.57	
7457.00	56.600	272.000	7083.11	560.04	1444.19	-137.29	40°13'28.388"N	104°56'37.031"W	3.50	
7502.00	57.800	270.500	7107.49	596.39	1445.01	-175.10	40°13'28.396"N	104°56'37.518"W	3.87	
7545.00	60.900	270.000	7129.41	631.76	1445.17	-212.09	40°13'28.398"N	104°56'37.995"W	7.28	
7589.00	64.100	270.100	7149.72	669.03	1445.21	-251.11	40°13'28.398"N	104°56'38.498"W	7.28	
7633.00	66.900	269.800	7167.97	707.25	1445.17	-291.15	40°13'28.398"N	104°56'39.014"W	6.39	
7677.00	70.500	269.300	7183.95	746.29	1444.85	-332.13	40°13'28.395"N	104°56'39.543"W	8.25	
7721.00	74.800	269.400	7197.07	786.24	1444.37	-374.12	40°13'28.390"N	104°56'40.084"W	9.78	
7766.00	79.500	266.200	7207.07	827.58	1442.68	-417.94	40°13'28.373"N	104°56'40.649"W	12.53	
7809.00	82.700	266.000	7213.73	867.19	1439.79	-460.32	40°13'28.345"N	104°56'41.195"W	7.46	
7853.00	86.100	266.700	7218.02	908.08	1437.00	-504.01	40°13'28.317"N	104°56'41.758"W	7.89	
7923.00†	86.990	268.419	7222.24	973.85	1434.02	-573.82	40°13'28.288"N	104°56'42.658"W	2.76	7" INTERMEDIATE CASING
7963.00	87.500	269.400	7224.16	1011.77	1433.26	-613.76	40°13'28.280"N	104°56'43.173"W	2.76	
8053.00	87.100	269.700	7228.40	1097.40	1432.56	-703.66	40°13'28.273"N	104°56'44.332"W	0.56	
8139.00	89.200	270.400	7231.18	1179.50	1432.63	-789.61	40°13'28.274"N	104°56'45.440"W	2.57	
8227.00	89.600	269.400	7232.10	1263.47	1432.48	-877.60	40°13'28.272"N	104°56'46.575"W	1.22	
8315.00	89.900	268.500	7232.48	1347.01	1430.87	-965.59	40°13'28.256"N	104°56'47.709"W	1.08	
8403.00	89.700	269.500	7232.79	1430.56	1429.33	-1053.57	40°13'28.241"N	104°56'48.843"W	1.16	
8491.00	88.700	268.700	7234.02	1514.16	1427.95	-1141.55	40°13'28.227"N	104°56'49.978"W	1.46	
8579.00	89.000	269.000	7235.78	1597.63	1426.18	-1229.52	40°13'28.210"N	104°56'51.112"W	0.48	
8669.00	88.600	267.600	7237.67	1682.72	1423.51	-1319.45	40°13'28.184"N	104°56'52.271"W	1.62	
8757.00	89.500	267.300	7239.13	1765.49	1419.60	-1407.35	40°13'28.145"N	104°56'53.404"W	1.08	
8845.00	90.200	267.900	7239.36	1848.35	1415.91	-1495.27	40°13'28.108"N	104°56'54.538"W	1.05	
8935.00	89.900	269.400	7239.28	1933.63	1413.79	-1585.25	40°13'28.087"N	104°56'55.698"W	1.70	
9023.00	89.900	270.200	7239.43	2017.57	1413.49	-1673.25	40°13'28.084"N	104°56'56.832"W	0.91	
9109.00	90.400	273.600	7239.21	2100.48	1416.34	-1759.19	40°13'28.112"N	104°56'57.940"W	4.00	
9198.00	90.000	273.400	7238.90	2186.91	1421.77	-1848.02	40°13'28.166"N	104°56'59.085"W	0.50	
9284.00	89.500	271.800	7239.27	2270.10	1425.67	-1933.93	40°13'28.204"N	104°57'00.193"W	1.95	
9373.00	89.800	270.200	7239.82	2355.53	1427.23	-2022.91	40°13'28.220"N	104°57'01.340"W	1.83	
9463.00	89.200	269.900	7240.60	2441.49	1427.30	-2112.90	40°13'28.220"N	104°57'02.500"W	0.75	
9551.00	89.500	270.000	7241.60	2525.49	1427.23	-2200.90	40°13'28.220"N	104°57'03.635"W	0.36	
9640.00	87.800	269.400	7243.70	2610.31	1426.76	-2289.87	40°13'28.215"N	104°57'04.782"W	2.03	
9727.00	89.600	269.800	7245.67	2693.17	1426.15	-2376.84	40°13'28.209"N	104°57'05.903"W	2.12	
9815.00	90.100	269.100	7245.90	2776.95	1425.31	-2464.84	40°13'28.200"N	104°57'07.037"W	0.98	



# Actual Wellpath Report

PSC 12C-13HZ AWP

Page 5 of 7



REFERENCE WELLPATH IDENTIFICATION			
Operator	ANADARKO E&P COMPANY LP	Slot	SLOT#01 PSC 12C-13HZ (546'FSL & 383'FEL, SEC.13)
Area	COLORADO	Well	PSC 12C-13HZ
Field	WELD COUNTY (KERR MCGEE)	Wellbore	PSC 12C-13HZ AWB
Facility	SEC.13-T3N-R68W		

WELLPATH DATA (159 stations)										
MD [ft]	Inclination [°]	Azimuth [°]	TVD [ft]	Vert Sect [ft]	North [ft]	East [ft]	Latitude	Longitude	DLS [°/100ft]	Comments
9903.00	88.700	268.800	7246.82	2860.47	1423.70	-2552.81	40°13'28.184"N	104°57'08.172"W	1.63	
9992.00	87.900	269.300	7249.46	2944.97	1422.22	-2641.76	40°13'28.170"N	104°57'09.318"W	1.06	
10057.00	88.100	268.400	7251.73	3006.60	1420.92	-2706.71	40°13'28.157"N	104°57'10.156"W	1.42	
10145.00	88.500	269.100	7254.34	3090.00	1419.00	-2794.65	40°13'28.138"N	104°57'11.289"W	0.92	
10235.00	88.900	269.200	7256.38	3175.51	1417.67	-2884.61	40°13'28.124"N	104°57'12.449"W	0.46	
10324.00	88.700	268.900	7258.25	3260.02	1416.19	-2973.58	40°13'28.110"N	104°57'13.596"W	0.41	
10410.00	89.600	269.600	7259.52	3341.79	1415.06	-3059.56	40°13'28.099"N	104°57'14.705"W	1.33	
10498.00	89.200	268.900	7260.45	3425.47	1413.91	-3147.55	40°13'28.087"N	104°57'15.839"W	0.92	
10586.00	89.900	269.600	7261.14	3509.14	1412.76	-3235.54	40°13'28.076"N	104°57'16.973"W	1.12	
10674.00	90.400	269.800	7260.91	3593.03	1412.30	-3323.54	40°13'28.071"N	104°57'18.108"W	0.61	
10762.00	90.800	269.200	7259.98	3676.82	1411.53	-3411.53	40°13'28.063"N	104°57'19.242"W	0.82	
10852.00	90.300	268.400	7259.12	3762.18	1409.65	-3501.50	40°13'28.044"N	104°57'20.402"W	1.05	
10940.00	89.200	268.600	7259.50	3845.49	1407.34	-3589.47	40°13'28.022"N	104°57'21.536"W	1.27	
11029.00	89.000	268.900	7260.90	3929.87	1405.40	-3678.44	40°13'28.002"N	104°57'22.683"W	0.41	
11117.00	90.200	269.700	7261.52	4013.57	1404.33	-3766.43	40°13'27.991"N	104°57'23.817"W	1.64	
11204.00	90.800	269.600	7260.76	4096.48	1403.80	-3853.42	40°13'27.986"N	104°57'24.939"W	0.70	
11292.00	90.400	268.200	7259.84	4179.98	1402.11	-3941.40	40°13'27.969"N	104°57'26.073"W	1.65	
11380.00	91.000	267.300	7258.76	4262.91	1398.65	-4029.32	40°13'27.935"N	104°57'27.207"W	1.23	
11466.00	90.800	267.100	7257.41	4343.68	1394.45	-4115.21	40°13'27.893"N	104°57'28.314"W	0.33	
11555.00	89.900	266.100	7256.87	4426.94	1389.17	-4204.05	40°13'27.841"N	104°57'29.459"W	1.51	
11642.00	89.400	264.900	7257.40	4507.73	1382.35	-4290.78	40°13'27.773"N	104°57'30.577"W	1.49	
11732.00	89.000	263.600	7258.65	4590.54	1373.33	-4380.31	40°13'27.684"N	104°57'31.732"W	1.51	
11771.00	89.100	262.800	7259.30	4626.14	1368.72	-4419.03	40°13'27.638"N	104°57'32.231"W	2.07	LAST BHI MWD SURVEY
11839.00	89.100	262.800	7260.37	4688.03	1360.19	-4486.49	40°13'27.554"N	104°57'33.100"W	0.00	PROJECTION TO BIT

HOLE & CASING SECTIONS - Ref Wellbore: PSC 12C-13HZ AWB Ref Wellpath: PSC 12C-13HZ AWP									
String/Diameter	Start MD [ft]	End MD [ft]	Interval [ft]	Start TVD [ft]	End TVD [ft]	Start N/S [ft]	Start E/W [ft]	End N/S [ft]	End E/W [ft]
9.625in Casing Surface	17.00	932.00	915.00	17.00	931.78	12.70	7.51	14.12	8.90
8.75in Open Hole	932.00	7934.00	7002.00	931.78	7222.80	14.12	8.90	1433.75	-584.80
7in Casing Intermediate	17.00	7923.00	7906.00	17.00	7222.24	12.70	7.51	1434.02	-573.82
6.125in Open Hole	7934.00	11839.00	3905.00	7222.80	7260.37	1433.75	-584.80	1360.19	-4486.49



# Actual Wellpath Report

PSC 12C-13HZ AWP

Page 6 of 7



## REFERENCE WELLPATH IDENTIFICATION

Operator	ANADARKO E&P COMPANY LP	Slot	SLOT#01 PSC 12C-13HZ (546'FSL & 383'FEL, SEC.13)
Area	COLORADO	Well	PSC 12C-13HZ
Field	WELD COUNTY (KERR MCGEE)	Wellbore	PSC 12C-13HZ AWB
Facility	SEC.13-T3N-R68W		

## TARGETS

Name	MD [ft]	TVD [ft]	North [ft]	East [ft]	Grid East [US ft]	Grid North [US ft]	Latitude	Longitude	Shape
PSC PAD SEC. 13 SECTION LINES		0.00	0.00	0.00	3155504.04	1323690.61	40°13'14.117"N	104°56'35.261"W	polygon
PSC 12C-13HZ BHL ON PLAT (2000'FSL & 460'FWL, REV-1)		7247.00	1397.52	-4492.74	3151002.81	1325059.83	40°13'27.923"N	104°57'33.181"W	point
PSC PAD SEC. 13 HARDLINE (460' SETBACK)		7247.00	0.00	0.00	3155504.04	1323690.61	40°13'14.117"N	104°56'35.261"W	polygon

## WELLPATH COMPOSITION - Ref Wellbore: PSC 12C-13HZ AWB Ref Wellpath: PSC 12C-13HZ AWP

Start MD [ft]	End MD [ft]	Positional Uncertainty Model	Log Name/Comment	Wellbore
874.00	11771.00	NaviTrak (Standard)	BHI MWD SURVEYS <96-11771>	PSC 12C-13HZ AWB
11771.00	11839.00	Blind Drilling (std)	Projection to bit	PSC 12C-13HZ AWB





# Actual Wellpath Report

PSC 12C-13HZ AWP

Page 7 of 7



## REFERENCE WELLPATH IDENTIFICATION

Operator	ANADARKO E&P COMPANY LP	Slot	SLOT#01 PSC 12C-13HZ (546'FSL & 383'FEL, SEC.13)
Area	COLORADO	Well	PSC 12C-13HZ
Field	WELD COUNTY (KERR MCGEE)	Wellbore	PSC 12C-13HZ AWB
Facility	SEC.13-T3N-R68W		

## WELLPATH COMMENTS

MD [ft]	Inclination [°]	Azimuth [°]	TVD [ft]	Comment
874.00	2.000	42.740	873.81	TIED INTO MULTISHOT SURVEYS
932.00	1.937	46.031	931.78	9.625" SURFACE CASING
7923.00	86.990	268.419	7222.24	7" INTERMEDIATE CASING
11771.00	89.100	262.800	7259.30	LAST BHI MWD SURVEY
11839.00	89.100	262.800	7260.37	PROJECTION TO BIT