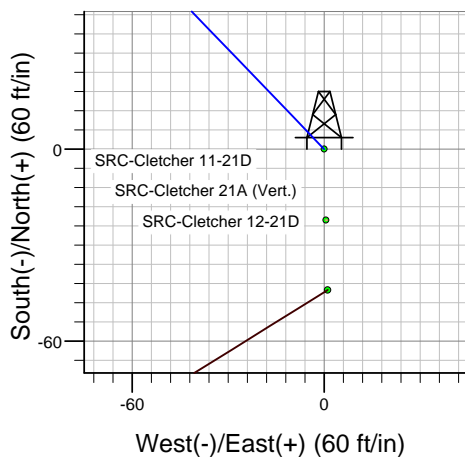
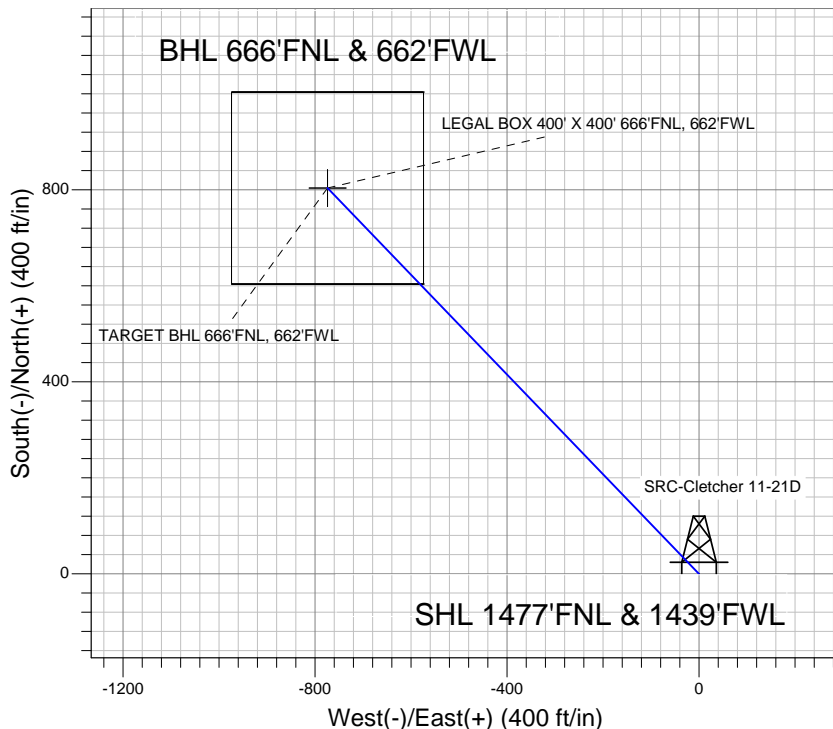
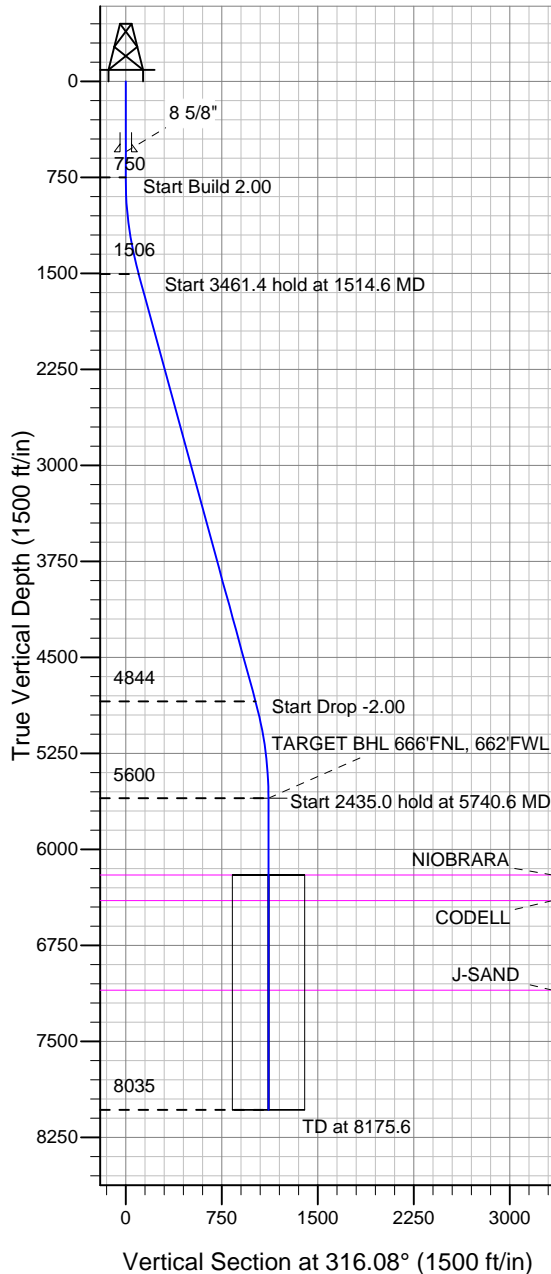


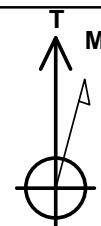
Well Name: SRC-Cletcher 11-21D

Surface Location: SRC-Cletcher Pad Sec.21-T4N-R68W
 North American Datum 1983, US State Plane 1983 Colorado Northern Zone
 Ground Elevation: 4935.0
 +N/-S 0.0 +E/-W 0.0 Northing 1353231.67 Easting 3135919.75 Latitude 40.301996 Longitude -105.012678
 Original Well Elev. @ 4948.0ft (Original Well Elev.)

Synergy Resources



SRC-Cletcher Pad Sec.21-T4N-R68W
 SRC-Cletcher 11-21D
 SRC-Cletcher 11-21D Plan #2 (8-29-11)
 15:35, August 29 2011



Azimuths to True North
 Magnetic North: 8.92°
 Magnetic Field
 Strength: 53054.1snT
 Dip Angle: 66.93°
 Date: 8/29/2011
 Model: IGRF200510

WELLBORE TARGET DETAILS (LAT/LONG)

Name	TVD	+N/-S	+E/-W	Latitude	Longitude	Shape
TARGET BHL 666'FNL, 662'FWL	5600.0	803.7	-774.0	40.304202	-105.015453	Point
LEGAL BOX 400' X 400' 666'FNL, 662'FWL	6200.0	803.7	-774.0	40.304202	-105.015453	Rectangle (Sides: L400.0 W400.0)

SECTION DETAILS

Sec	MD	Inc	Azi	TVD	+N/-S	+E/-W	DLeg	TFace	VSec	Target
1	0.0	0.00	0.00	0.0	0.0	0.0	0.00	0.00	0.0	
2	750.0	0.00	0.00	750.0	0.0	0.0	0.00	0.00	0.0	
3	1514.6	15.29	316.08	1505.6	73.1	-70.4	2.00	316.08	101.4	
4	4976.0	15.29	316.08	4844.4	730.6	-703.6	0.00	0.00	1014.4	
5	5740.6	0.00	0.00	5600.0	803.7	-774.0	2.00	180.00	1115.8	TARGET BHL 666'FNL, 662'FWL
6	8175.6	0.00	0.00	8035.0	803.7	-774.0	0.00	0.00	1115.8	



Directional

Synergy Resources

SEC.21-T4N-R68W

SRC-Cletcher Pad Sec.21-T4N-R68W

SRC-Cletcher 11-21D

SRC-Cletcher 11-21D

Plan: SRC-Cletcher 11-21D Plan #2 (8-29-11)

Standard Planning Report

29 August, 2011

Database:	Landmark	Local Co-ordinate Reference:	Well SRC-Cletcher 11-21D
Company:	Synergy Resources	TVD Reference:	WELL @ 4948.0ft (Original Well Elev.)
Project:	SEC.21-T4N-R68W	MD Reference:	WELL @ 4948.0ft (Original Well Elev.)
Site:	SRC-Cletcher Pad Sec.21-T4N-R68W	North Reference:	True
Well:	SRC-Cletcher 11-21D	Survey Calculation Method:	Minimum Curvature
Wellbore:	SRC-Cletcher 11-21D		
Design:	SRC-Cletcher 11-21D Plan #2 (8-29-11)		

Project	SEC.21-T4N-R68W, Weld County, Colorado		
Map System:	US State Plane 1983	System Datum:	Mean Sea Level
Geo Datum:	North American Datum 1983		Using Well Reference Point
Map Zone:	Colorado Northern Zone		Using geodetic scale factor

Site						SRC-Cletcher Pad Sec.21-T4N-R68W							
Site Position:						Northing:		1,353,199.58 ft		Latitude:		40.301909	
From:			Lat/Long			Easting:		3,135,844.89 ft		Longitude:		-105.012947	
Position Uncertainty:			0.0 ft			Slot Radius:		"		Grid Convergence:		0.31 °	

Well	SRC-Cletcher 11-21D					
Well Position	+N/-S	31.7 ft	Northing:	1,353,231.67 ft	Latitude:	40.301996
	+E/-W	75.0 ft	Easting:	3,135,919.75 ft	Longitude:	-105.012678
Position Uncertainty		0.0 ft	Wellhead Elevation:	ft	Ground Level:	4,935.0 ft

Wellbore	SRC-Cletcher 11-21D				
Magnetics	Model Name	Sample Date	Declination (°)	Dip Angle (°)	Field Strength (nT)
	IGRF200510	8/29/2011	8.92	66.93	53,054

Design	SRC-Cletcher 11-21D Plan #2 (8-29-11)			
Audit Notes:				
Version:	Phase:	PROTOTYPE	Tie On Depth:	0.0
Vertical Section:	Depth From (TVD) (ft)	+N/-S (ft)	+E/-W (ft)	Direction (°)
	0.0	0.0	0.0	316.08

Plan Sections										
Measured Depth (ft)	Inclination (°)	Azimuth (°)	Vertical Depth (ft)	+N/-S (ft)	+E/-W (ft)	Dogleg Rate (°/100ft)	Build Rate (°/100ft)	Turn Rate (°/100ft)	TFO (°)	Target
0.0	0.00	0.00	0.0	0.0	0.0	0.00	0.00	0.00	0.00	
750.0	0.00	0.00	750.0	0.0	0.0	0.00	0.00	0.00	0.00	
1,514.6	15.29	316.08	1,505.6	73.1	-70.4	2.00	2.00	0.00	316.08	
4,976.0	15.29	316.08	4,844.4	730.6	-703.6	0.00	0.00	0.00	0.00	
5,740.6	0.00	0.00	5,600.0	803.7	-774.0	2.00	-2.00	0.00	180.00	TARGET BHL 666'I
8,175.6	0.00	0.00	8,035.0	803.7	-774.0	0.00	0.00	0.00	0.00	

Database: Landmark
Company: Synergy Resources
Project: SEC.21-T4N-R68W
Site: SRC-Cletcher Pad Sec.21-T4N-R68W
Well: SRC-Cletcher 11-21D
Wellbore: SRC-Cletcher 11-21D
Design: SRC-Cletcher 11-21D Plan #2 (8-29-11)

Local Co-ordinate Reference: Well SRC-Cletcher 11-21D
TVD Reference: WELL @ 4948.0ft (Original Well Elev.)
MD Reference: WELL @ 4948.0ft (Original Well Elev.)
North Reference: True
Survey Calculation Method: Minimum Curvature

Planned Survey

Measured Depth (ft)	Inclination (°)	Azimuth (°)	Vertical Depth (ft)	+N/-S (ft)	+E/-W (ft)	Vertical Section (ft)	Dogleg Rate (°/100ft)	Build Rate (°/100ft)	Turn Rate (°/100ft)
0.0	0.00	0.00	0.0	0.0	0.0	0.0	0.00	0.00	0.00
40.0	0.00	0.00	40.0	0.0	0.0	0.0	0.00	0.00	0.00
80.0	0.00	0.00	80.0	0.0	0.0	0.0	0.00	0.00	0.00
120.0	0.00	0.00	120.0	0.0	0.0	0.0	0.00	0.00	0.00
160.0	0.00	0.00	160.0	0.0	0.0	0.0	0.00	0.00	0.00
200.0	0.00	0.00	200.0	0.0	0.0	0.0	0.00	0.00	0.00
240.0	0.00	0.00	240.0	0.0	0.0	0.0	0.00	0.00	0.00
280.0	0.00	0.00	280.0	0.0	0.0	0.0	0.00	0.00	0.00
320.0	0.00	0.00	320.0	0.0	0.0	0.0	0.00	0.00	0.00
360.0	0.00	0.00	360.0	0.0	0.0	0.0	0.00	0.00	0.00
400.0	0.00	0.00	400.0	0.0	0.0	0.0	0.00	0.00	0.00
440.0	0.00	0.00	440.0	0.0	0.0	0.0	0.00	0.00	0.00
480.0	0.00	0.00	480.0	0.0	0.0	0.0	0.00	0.00	0.00
520.0	0.00	0.00	520.0	0.0	0.0	0.0	0.00	0.00	0.00
550.0	0.00	0.00	550.0	0.0	0.0	0.0	0.00	0.00	0.00
8 5/8"									
560.0	0.00	0.00	560.0	0.0	0.0	0.0	0.00	0.00	0.00
600.0	0.00	0.00	600.0	0.0	0.0	0.0	0.00	0.00	0.00
640.0	0.00	0.00	640.0	0.0	0.0	0.0	0.00	0.00	0.00
680.0	0.00	0.00	680.0	0.0	0.0	0.0	0.00	0.00	0.00
720.0	0.00	0.00	720.0	0.0	0.0	0.0	0.00	0.00	0.00
750.0	0.00	0.00	750.0	0.0	0.0	0.0	0.00	0.00	0.00
760.0	0.20	316.08	760.0	0.0	0.0	0.0	2.00	2.00	0.00
800.0	1.00	316.08	800.0	0.3	-0.3	0.4	2.00	2.00	0.00
840.0	1.80	316.08	840.0	1.0	-1.0	1.4	2.00	2.00	0.00
880.0	2.60	316.08	880.0	2.1	-2.0	2.9	2.00	2.00	0.00
920.0	3.40	316.08	919.9	3.6	-3.5	5.0	2.00	2.00	0.00
960.0	4.20	316.08	959.8	5.5	-5.3	7.7	2.00	2.00	0.00
1,000.0	5.00	316.08	999.7	7.9	-7.6	10.9	2.00	2.00	0.00
1,040.0	5.80	316.08	1,039.5	10.6	-10.2	14.7	2.00	2.00	0.00
1,080.0	6.60	316.08	1,079.3	13.7	-13.2	19.0	2.00	2.00	0.00
1,120.0	7.40	316.08	1,119.0	17.2	-16.6	23.9	2.00	2.00	0.00
1,160.0	8.20	316.08	1,158.6	21.1	-20.3	29.3	2.00	2.00	0.00
1,200.0	9.00	316.08	1,198.2	25.4	-24.5	35.3	2.00	2.00	0.00
1,240.0	9.80	316.08	1,237.6	30.1	-29.0	41.8	2.00	2.00	0.00
1,280.0	10.60	316.08	1,277.0	35.2	-33.9	48.9	2.00	2.00	0.00
1,320.0	11.40	316.08	1,316.2	40.7	-39.2	56.5	2.00	2.00	0.00
1,360.0	12.20	316.08	1,355.4	46.6	-44.9	64.7	2.00	2.00	0.00
1,400.0	13.00	316.08	1,394.4	52.9	-50.9	73.4	2.00	2.00	0.00
1,440.0	13.80	316.08	1,433.3	59.6	-57.4	82.7	2.00	2.00	0.00
1,480.0	14.60	316.08	1,472.1	66.6	-64.2	92.5	2.00	2.00	0.00
1,514.6	15.29	316.08	1,505.6	73.1	-70.4	101.4	2.00	2.00	0.00
1,520.0	15.29	316.08	1,510.8	74.1	-71.3	102.9	0.00	0.00	0.00
1,560.0	15.29	316.08	1,549.3	81.7	-78.7	113.4	0.00	0.00	0.00
1,600.0	15.29	316.08	1,587.9	89.3	-86.0	124.0	0.00	0.00	0.00
1,640.0	15.29	316.08	1,626.5	96.9	-93.3	134.5	0.00	0.00	0.00
1,680.0	15.29	316.08	1,665.1	104.5	-100.6	145.1	0.00	0.00	0.00
1,720.0	15.29	316.08	1,703.7	112.1	-107.9	155.6	0.00	0.00	0.00
1,760.0	15.29	316.08	1,742.3	119.7	-115.3	166.2	0.00	0.00	0.00
1,800.0	15.29	316.08	1,780.8	127.3	-122.6	176.7	0.00	0.00	0.00
1,840.0	15.29	316.08	1,819.4	134.9	-129.9	187.3	0.00	0.00	0.00
1,880.0	15.29	316.08	1,858.0	142.5	-137.2	197.8	0.00	0.00	0.00
1,920.0	15.29	316.08	1,896.6	150.1	-144.5	208.4	0.00	0.00	0.00
1,960.0	15.29	316.08	1,935.2	157.7	-151.8	218.9	0.00	0.00	0.00

Database: Landmark
Company: Synergy Resources
Project: SEC.21-T4N-R68W
Site: SRC-Cletcher Pad Sec.21-T4N-R68W
Well: SRC-Cletcher 11-21D
Wellbore: SRC-Cletcher 11-21D
Design: SRC-Cletcher 11-21D Plan #2 (8-29-11)

Local Co-ordinate Reference: Well SRC-Cletcher 11-21D
TVD Reference: WELL @ 4948.0ft (Original Well Elev.)
MD Reference: WELL @ 4948.0ft (Original Well Elev.)
North Reference: True
Survey Calculation Method: Minimum Curvature

Planned Survey									
Measured Depth (ft)	Inclination (°)	Azimuth (°)	Vertical Depth (ft)	+N/-S (ft)	+E/-W (ft)	Vertical Section (ft)	Dogleg Rate (°/100ft)	Build Rate (°/100ft)	Turn Rate (°/100ft)
2,000.0	15.29	316.08	1,973.8	165.3	-159.2	229.4	0.00	0.00	0.00
2,040.0	15.29	316.08	2,012.4	172.9	-166.5	240.0	0.00	0.00	0.00
2,080.0	15.29	316.08	2,050.9	180.5	-173.8	250.5	0.00	0.00	0.00
2,120.0	15.29	316.08	2,089.5	188.1	-181.1	261.1	0.00	0.00	0.00
2,160.0	15.29	316.08	2,128.1	195.7	-188.4	271.6	0.00	0.00	0.00
2,200.0	15.29	316.08	2,166.7	203.3	-195.8	282.2	0.00	0.00	0.00
2,240.0	15.29	316.08	2,205.3	210.9	-203.1	292.7	0.00	0.00	0.00
2,280.0	15.29	316.08	2,243.9	218.5	-210.4	303.3	0.00	0.00	0.00
2,320.0	15.29	316.08	2,282.4	226.1	-217.7	313.8	0.00	0.00	0.00
2,360.0	15.29	316.08	2,321.0	233.7	-225.0	324.4	0.00	0.00	0.00
2,400.0	15.29	316.08	2,359.6	241.3	-232.3	334.9	0.00	0.00	0.00
2,440.0	15.29	316.08	2,398.2	248.9	-239.7	345.5	0.00	0.00	0.00
2,480.0	15.29	316.08	2,436.8	256.5	-247.0	356.0	0.00	0.00	0.00
2,520.0	15.29	316.08	2,475.4	264.1	-254.3	366.6	0.00	0.00	0.00
2,560.0	15.29	316.08	2,513.9	271.7	-261.6	377.1	0.00	0.00	0.00
2,600.0	15.29	316.08	2,552.5	279.3	-268.9	387.7	0.00	0.00	0.00
2,640.0	15.29	316.08	2,591.1	286.9	-276.3	398.2	0.00	0.00	0.00
2,680.0	15.29	316.08	2,629.7	294.4	-283.6	408.8	0.00	0.00	0.00
2,720.0	15.29	316.08	2,668.3	302.0	-290.9	419.3	0.00	0.00	0.00
2,760.0	15.29	316.08	2,706.9	309.6	-298.2	429.9	0.00	0.00	0.00
2,800.0	15.29	316.08	2,745.4	317.2	-305.5	440.4	0.00	0.00	0.00
2,840.0	15.29	316.08	2,784.0	324.8	-312.8	451.0	0.00	0.00	0.00
2,880.0	15.29	316.08	2,822.6	332.4	-320.2	461.5	0.00	0.00	0.00
2,920.0	15.29	316.08	2,861.2	340.0	-327.5	472.1	0.00	0.00	0.00
2,960.0	15.29	316.08	2,899.8	347.6	-334.8	482.6	0.00	0.00	0.00
3,000.0	15.29	316.08	2,938.4	355.2	-342.1	493.2	0.00	0.00	0.00
3,040.0	15.29	316.08	2,976.9	362.8	-349.4	503.7	0.00	0.00	0.00
3,080.0	15.29	316.08	3,015.5	370.4	-356.8	514.3	0.00	0.00	0.00
3,120.0	15.29	316.08	3,054.1	378.0	-364.1	524.8	0.00	0.00	0.00
3,160.0	15.29	316.08	3,092.7	385.6	-371.4	535.4	0.00	0.00	0.00
3,200.0	15.29	316.08	3,131.3	393.2	-378.7	545.9	0.00	0.00	0.00
3,240.0	15.29	316.08	3,169.9	400.8	-386.0	556.5	0.00	0.00	0.00
3,280.0	15.29	316.08	3,208.4	408.4	-393.3	567.0	0.00	0.00	0.00
3,320.0	15.29	316.08	3,247.0	416.0	-400.7	577.6	0.00	0.00	0.00
3,360.0	15.29	316.08	3,285.6	423.6	-408.0	588.1	0.00	0.00	0.00
3,400.0	15.29	316.08	3,324.2	431.2	-415.3	598.7	0.00	0.00	0.00
3,440.0	15.29	316.08	3,362.8	438.8	-422.6	609.2	0.00	0.00	0.00
3,480.0	15.29	316.08	3,401.4	446.4	-429.9	619.8	0.00	0.00	0.00
3,520.0	15.29	316.08	3,440.0	454.0	-437.2	630.3	0.00	0.00	0.00
3,560.0	15.29	316.08	3,478.5	461.6	-444.6	640.9	0.00	0.00	0.00
3,600.0	15.29	316.08	3,517.1	469.2	-451.9	651.4	0.00	0.00	0.00
3,640.0	15.29	316.08	3,555.7	476.8	-459.2	662.0	0.00	0.00	0.00
3,680.0	15.29	316.08	3,594.3	484.4	-466.5	672.5	0.00	0.00	0.00
3,720.0	15.29	316.08	3,632.9	492.0	-473.8	683.1	0.00	0.00	0.00
3,760.0	15.29	316.08	3,671.5	499.6	-481.2	693.6	0.00	0.00	0.00
3,800.0	15.29	316.08	3,710.0	507.2	-488.5	704.2	0.00	0.00	0.00
3,840.0	15.29	316.08	3,748.6	514.8	-495.8	714.7	0.00	0.00	0.00
3,880.0	15.29	316.08	3,787.2	522.4	-503.1	725.3	0.00	0.00	0.00
3,920.0	15.29	316.08	3,825.8	530.0	-510.4	735.8	0.00	0.00	0.00
3,960.0	15.29	316.08	3,864.4	537.6	-517.7	746.4	0.00	0.00	0.00
4,000.0	15.29	316.08	3,903.0	545.2	-525.1	756.9	0.00	0.00	0.00
4,040.0	15.29	316.08	3,941.5	552.8	-532.4	767.5	0.00	0.00	0.00
4,080.0	15.29	316.08	3,980.1	560.4	-539.7	778.0	0.00	0.00	0.00
4,120.0	15.29	316.08	4,018.7	568.0	-547.0	788.6	0.00	0.00	0.00

Database: Landmark
Company: Synergy Resources
Project: SEC.21-T4N-R68W
Site: SRC-Cletcher Pad Sec.21-T4N-R68W
Well: SRC-Cletcher 11-21D
Wellbore: SRC-Cletcher 11-21D
Design: SRC-Cletcher 11-21D Plan #2 (8-29-11)

Local Co-ordinate Reference: Well SRC-Cletcher 11-21D
TVD Reference: WELL @ 4948.0ft (Original Well Elev.)
MD Reference: WELL @ 4948.0ft (Original Well Elev.)
North Reference: True
Survey Calculation Method: Minimum Curvature

Planned Survey									
Measured Depth (ft)	Inclination (°)	Azimuth (°)	Vertical Depth (ft)	+N/-S (ft)	+E/-W (ft)	Vertical Section (ft)	Dogleg Rate (°/100ft)	Build Rate (°/100ft)	Turn Rate (°/100ft)
4,160.0	15.29	316.08	4,057.3	575.6	-554.3	799.1	0.00	0.00	0.00
4,200.0	15.29	316.08	4,095.9	583.2	-561.7	809.7	0.00	0.00	0.00
4,240.0	15.29	316.08	4,134.5	590.8	-569.0	820.2	0.00	0.00	0.00
4,280.0	15.29	316.08	4,173.0	598.4	-576.3	830.8	0.00	0.00	0.00
4,320.0	15.29	316.08	4,211.6	606.0	-583.6	841.3	0.00	0.00	0.00
4,360.0	15.29	316.08	4,250.2	613.6	-590.9	851.9	0.00	0.00	0.00
4,400.0	15.29	316.08	4,288.8	621.2	-598.2	862.4	0.00	0.00	0.00
4,440.0	15.29	316.08	4,327.4	628.8	-605.6	873.0	0.00	0.00	0.00
4,480.0	15.29	316.08	4,366.0	636.4	-612.9	883.5	0.00	0.00	0.00
4,520.0	15.29	316.08	4,404.5	644.0	-620.2	894.1	0.00	0.00	0.00
4,560.0	15.29	316.08	4,443.1	651.6	-627.5	904.6	0.00	0.00	0.00
4,600.0	15.29	316.08	4,481.7	659.2	-634.8	915.2	0.00	0.00	0.00
4,640.0	15.29	316.08	4,520.3	666.8	-642.2	925.7	0.00	0.00	0.00
4,680.0	15.29	316.08	4,558.9	674.4	-649.5	936.3	0.00	0.00	0.00
4,720.0	15.29	316.08	4,597.5	682.0	-656.8	946.8	0.00	0.00	0.00
4,760.0	15.29	316.08	4,636.0	689.6	-664.1	957.4	0.00	0.00	0.00
4,800.0	15.29	316.08	4,674.6	697.2	-671.4	967.9	0.00	0.00	0.00
4,840.0	15.29	316.08	4,713.2	704.8	-678.7	978.5	0.00	0.00	0.00
4,880.0	15.29	316.08	4,751.8	712.4	-686.1	989.0	0.00	0.00	0.00
4,920.0	15.29	316.08	4,790.4	720.0	-693.4	999.6	0.00	0.00	0.00
4,960.0	15.29	316.08	4,829.0	727.6	-700.7	1,010.1	0.00	0.00	0.00
4,976.0	15.29	316.08	4,844.4	730.6	-703.6	1,014.4	0.00	0.00	0.00
5,000.0	14.81	316.08	4,867.6	735.1	-707.9	1,020.6	2.00	-2.00	0.00
5,040.0	14.01	316.08	4,906.3	742.3	-714.9	1,030.5	2.00	-2.00	0.00
5,080.0	13.21	316.08	4,945.2	749.1	-721.4	1,039.9	2.00	-2.00	0.00
5,120.0	12.41	316.08	4,984.2	755.5	-727.5	1,048.8	2.00	-2.00	0.00
5,160.0	11.61	316.08	5,023.3	761.4	-733.3	1,057.1	2.00	-2.00	0.00
5,200.0	10.81	316.08	5,062.6	767.1	-738.7	1,064.9	2.00	-2.00	0.00
5,240.0	10.01	316.08	5,101.9	772.3	-743.7	1,072.2	2.00	-2.00	0.00
5,280.0	9.21	316.08	5,141.3	777.1	-748.4	1,078.8	2.00	-2.00	0.00
5,320.0	8.41	316.08	5,180.9	781.5	-752.6	1,085.0	2.00	-2.00	0.00
5,360.0	7.61	316.08	5,220.5	785.5	-756.5	1,090.5	2.00	-2.00	0.00
5,400.0	6.81	316.08	5,260.2	789.1	-760.0	1,095.6	2.00	-2.00	0.00
5,440.0	6.01	316.08	5,299.9	792.3	-763.1	1,100.0	2.00	-2.00	0.00
5,480.0	5.21	316.08	5,339.7	795.2	-765.8	1,103.9	2.00	-2.00	0.00
5,520.0	4.41	316.08	5,379.6	797.6	-768.1	1,107.3	2.00	-2.00	0.00
5,560.0	3.61	316.08	5,419.5	799.6	-770.0	1,110.1	2.00	-2.00	0.00
5,600.0	2.81	316.08	5,459.4	801.2	-771.6	1,112.3	2.00	-2.00	0.00
5,640.0	2.01	316.08	5,499.4	802.4	-772.8	1,114.0	2.00	-2.00	0.00
5,680.0	1.21	316.08	5,539.4	803.2	-773.5	1,115.1	2.00	-2.00	0.00
5,720.0	0.41	316.08	5,579.4	803.6	-773.9	1,115.7	2.00	-2.00	0.00
5,740.6	0.00	0.00	5,600.0	803.7	-774.0	1,115.8	2.00	-2.00	212.71
TARGET BHL 666'FNL, 662'FWL									
5,760.0	0.00	0.00	5,619.4	803.7	-774.0	1,115.8	0.00	0.00	0.00
5,800.0	0.00	0.00	5,659.4	803.7	-774.0	1,115.8	0.00	0.00	0.00
5,840.0	0.00	0.00	5,699.4	803.7	-774.0	1,115.8	0.00	0.00	0.00
5,880.0	0.00	0.00	5,739.4	803.7	-774.0	1,115.8	0.00	0.00	0.00
5,920.0	0.00	0.00	5,779.4	803.7	-774.0	1,115.8	0.00	0.00	0.00
5,960.0	0.00	0.00	5,819.4	803.7	-774.0	1,115.8	0.00	0.00	0.00
6,000.0	0.00	0.00	5,859.4	803.7	-774.0	1,115.8	0.00	0.00	0.00
6,040.0	0.00	0.00	5,899.4	803.7	-774.0	1,115.8	0.00	0.00	0.00
6,080.0	0.00	0.00	5,939.4	803.7	-774.0	1,115.8	0.00	0.00	0.00
6,120.0	0.00	0.00	5,979.4	803.7	-774.0	1,115.8	0.00	0.00	0.00
6,160.0	0.00	0.00	6,019.4	803.7	-774.0	1,115.8	0.00	0.00	0.00

Database: Landmark
Company: Synergy Resources
Project: SEC.21-T4N-R68W
Site: SRC-Cletcher Pad Sec.21-T4N-R68W
Well: SRC-Cletcher 11-21D
Wellbore: SRC-Cletcher 11-21D
Design: SRC-Cletcher 11-21D Plan #2 (8-29-11)

Local Co-ordinate Reference: Well SRC-Cletcher 11-21D
TVD Reference: WELL @ 4948.0ft (Original Well Elev.)
MD Reference: WELL @ 4948.0ft (Original Well Elev.)
North Reference: True
Survey Calculation Method: Minimum Curvature

Planned Survey

Measured Depth (ft)	Inclination (°)	Azimuth (°)	Vertical Depth (ft)	+N/-S (ft)	+E/-W (ft)	Vertical Section (ft)	Dogleg Rate (°/100ft)	Build Rate (°/100ft)	Turn Rate (°/100ft)
6,200.0	0.00	0.00	6,059.4	803.7	-774.0	1,115.8	0.00	0.00	0.00
6,240.0	0.00	0.00	6,099.4	803.7	-774.0	1,115.8	0.00	0.00	0.00
6,280.0	0.00	0.00	6,139.4	803.7	-774.0	1,115.8	0.00	0.00	0.00
6,320.0	0.00	0.00	6,179.4	803.7	-774.0	1,115.8	0.00	0.00	0.00
6,340.6	0.00	0.00	6,200.0	803.7	-774.0	1,115.8	0.00	0.00	0.00
NIORARA - LEGAL BOX 400' X 400' 666'FNL, 662'FWL									
6,360.0	0.00	0.00	6,219.4	803.7	-774.0	1,115.8	0.00	0.00	0.00
6,400.0	0.00	0.00	6,259.4	803.7	-774.0	1,115.8	0.00	0.00	0.00
6,440.0	0.00	0.00	6,299.4	803.7	-774.0	1,115.8	0.00	0.00	0.00
6,480.0	0.00	0.00	6,339.4	803.7	-774.0	1,115.8	0.00	0.00	0.00
6,520.0	0.00	0.00	6,379.4	803.7	-774.0	1,115.8	0.00	0.00	0.00
6,540.6	0.00	0.00	6,400.0	803.7	-774.0	1,115.8	0.00	0.00	0.00
CODELL									
6,560.0	0.00	0.00	6,419.4	803.7	-774.0	1,115.8	0.00	0.00	0.00
6,600.0	0.00	0.00	6,459.4	803.7	-774.0	1,115.8	0.00	0.00	0.00
6,640.0	0.00	0.00	6,499.4	803.7	-774.0	1,115.8	0.00	0.00	0.00
6,680.0	0.00	0.00	6,539.4	803.7	-774.0	1,115.8	0.00	0.00	0.00
6,720.0	0.00	0.00	6,579.4	803.7	-774.0	1,115.8	0.00	0.00	0.00
6,760.0	0.00	0.00	6,619.4	803.7	-774.0	1,115.8	0.00	0.00	0.00
6,800.0	0.00	0.00	6,659.4	803.7	-774.0	1,115.8	0.00	0.00	0.00
6,840.0	0.00	0.00	6,699.4	803.7	-774.0	1,115.8	0.00	0.00	0.00
6,880.0	0.00	0.00	6,739.4	803.7	-774.0	1,115.8	0.00	0.00	0.00
6,920.0	0.00	0.00	6,779.4	803.7	-774.0	1,115.8	0.00	0.00	0.00
6,960.0	0.00	0.00	6,819.4	803.7	-774.0	1,115.8	0.00	0.00	0.00
7,000.0	0.00	0.00	6,859.4	803.7	-774.0	1,115.8	0.00	0.00	0.00
7,040.0	0.00	0.00	6,899.4	803.7	-774.0	1,115.8	0.00	0.00	0.00
7,080.0	0.00	0.00	6,939.4	803.7	-774.0	1,115.8	0.00	0.00	0.00
7,120.0	0.00	0.00	6,979.4	803.7	-774.0	1,115.8	0.00	0.00	0.00
7,160.0	0.00	0.00	7,019.4	803.7	-774.0	1,115.8	0.00	0.00	0.00
7,200.0	0.00	0.00	7,059.4	803.7	-774.0	1,115.8	0.00	0.00	0.00
7,240.0	0.00	0.00	7,099.4	803.7	-774.0	1,115.8	0.00	0.00	0.00
7,240.6	0.00	0.00	7,100.0	803.7	-774.0	1,115.8	0.00	0.00	0.00
J-SAND									
7,280.0	0.00	0.00	7,139.4	803.7	-774.0	1,115.8	0.00	0.00	0.00
7,320.0	0.00	0.00	7,179.4	803.7	-774.0	1,115.8	0.00	0.00	0.00
7,360.0	0.00	0.00	7,219.4	803.7	-774.0	1,115.8	0.00	0.00	0.00
7,400.0	0.00	0.00	7,259.4	803.7	-774.0	1,115.8	0.00	0.00	0.00
7,440.0	0.00	0.00	7,299.4	803.7	-774.0	1,115.8	0.00	0.00	0.00
7,480.0	0.00	0.00	7,339.4	803.7	-774.0	1,115.8	0.00	0.00	0.00
7,520.0	0.00	0.00	7,379.4	803.7	-774.0	1,115.8	0.00	0.00	0.00
7,560.0	0.00	0.00	7,419.4	803.7	-774.0	1,115.8	0.00	0.00	0.00
7,600.0	0.00	0.00	7,459.4	803.7	-774.0	1,115.8	0.00	0.00	0.00
7,640.0	0.00	0.00	7,499.4	803.7	-774.0	1,115.8	0.00	0.00	0.00
7,680.0	0.00	0.00	7,539.4	803.7	-774.0	1,115.8	0.00	0.00	0.00
7,720.0	0.00	0.00	7,579.4	803.7	-774.0	1,115.8	0.00	0.00	0.00
7,760.0	0.00	0.00	7,619.4	803.7	-774.0	1,115.8	0.00	0.00	0.00
7,800.0	0.00	0.00	7,659.4	803.7	-774.0	1,115.8	0.00	0.00	0.00
7,840.0	0.00	0.00	7,699.4	803.7	-774.0	1,115.8	0.00	0.00	0.00
7,880.0	0.00	0.00	7,739.4	803.7	-774.0	1,115.8	0.00	0.00	0.00
7,920.0	0.00	0.00	7,779.4	803.7	-774.0	1,115.8	0.00	0.00	0.00
7,960.0	0.00	0.00	7,819.4	803.7	-774.0	1,115.8	0.00	0.00	0.00
8,000.0	0.00	0.00	7,859.4	803.7	-774.0	1,115.8	0.00	0.00	0.00
8,040.0	0.00	0.00	7,899.4	803.7	-774.0	1,115.8	0.00	0.00	0.00

Database: Landmark
Company: Synergy Resources
Project: SEC.21-T4N-R68W
Site: SRC-Cletcher Pad Sec.21-T4N-R68W
Well: SRC-Cletcher 11-21D
Wellbore: SRC-Cletcher 11-21D
Design: SRC-Cletcher 11-21D Plan #2 (8-29-11)

Local Co-ordinate Reference: Well SRC-Cletcher 11-21D
TVD Reference: WELL @ 4948.0ft (Original Well Elev.)
MD Reference: WELL @ 4948.0ft (Original Well Elev.)
North Reference: True
Survey Calculation Method: Minimum Curvature

Planned Survey

Measured Depth (ft)	Inclination (°)	Azimuth (°)	Vertical Depth (ft)	+N/-S (ft)	+E/-W (ft)	Vertical Section (ft)	Dogleg Rate (°/100ft)	Build Rate (°/100ft)	Turn Rate (°/100ft)
8,080.0	0.00	0.00	7,939.4	803.7	-774.0	1,115.8	0.00	0.00	0.00
8,120.0	0.00	0.00	7,979.4	803.7	-774.0	1,115.8	0.00	0.00	0.00
8,160.0	0.00	0.00	8,019.4	803.7	-774.0	1,115.8	0.00	0.00	0.00
8,175.6	0.00	0.00	8,035.0	803.7	-774.0	1,115.8	0.00	0.00	0.00

Targets

Target Name	Dip Angle (°)	Dip Dir. (°)	TVD (ft)	+N/-S (ft)	+E/-W (ft)	Northing (ft)	Easting (ft)	Latitude	Longitude
LEGAL BOX 400' X 400' - hit/miss target - Shape - Rectangle (sides W400.0 D1,835.0)	0.00	0.00	6,200.0	803.7	-774.0	1,354,031.07	3,135,141.38	40.304202	-105.015453
TARGET BHL 666'FN - plan hits target center - Point	0.00	0.00	5,600.0	803.7	-774.0	1,354,031.06	3,135,141.38	40.304202	-105.015453

Casing Points

Measured Depth (ft)	Vertical Depth (ft)	Name	Casing Diameter (")	Hole Diameter (")
550.0	550.0	8 5/8"	8-5/8	12-1/4

Formations

Measured Depth (ft)	Vertical Depth (ft)	Name	Lithology	Dip (°)	Dip Direction (°)
6,340.6	6,200.0	NIOBRARA		0.00	
6,540.6	6,400.0	CODELL		0.00	
7,240.6	7,100.0	J-SAND		0.00	



Directional

Synergy Resources

SEC.21-T4N-R68W

SRC-Cletcher Pad Sec.21-T4N-R68W

SRC-Cletcher 11-21D

SRC-Cletcher 11-21D

SRC-Cletcher 11-21D Plan #2 (8-29-11)

Anticollision Report

29 August, 2011

Company:	Synergy Resources	Local Co-ordinate Reference:	Well SRC-Cletcher 11-21D
Project:	SEC.21-T4N-R68W	TVD Reference:	WELL @ 4948.0ft (Original Well Elev.)
Reference Site:	SRC-Cletcher Pad Sec.21-T4N-R68W	MD Reference:	WELL @ 4948.0ft (Original Well Elev.)
Site Error:	0.0ft	North Reference:	True
Reference Well:	SRC-Cletcher 11-21D	Survey Calculation Method:	Minimum Curvature
Well Error:	0.0ft	Output errors are at	2.00 sigma
Reference Wellbore	SRC-Cletcher 11-21D	Database:	Landmark
Reference Design:	SRC-Cletcher 11-21D Plan #2 (8-29-11)	Offset TVD Reference:	Offset Datum

Reference	SRC-Cletcher 11-21D Plan #2 (8-29		
Filter type:	NO GLOBAL FILTER: Using user defined selection & filtering criteria		
Interpolation Method:	Stations	Error Model:	ISCWSA
Depth Range:	Unlimited	Scan Method:	Closest Approach 3D
Results Limited by:	Maximum center-center distance of 10,000.0ft	Error Surface:	Elliptical Conic
Warning Levels Evaluated at:	2.00 Sigma		

Survey Tool Program	Date 8/29/2011			
From (ft)	To (ft)	Survey (Wellbore)	Tool Name	Description
0.0	8,175.6	SRC-Cletcher 11-21D Plan #2 (8-29-11) (§ MWD		MWD - Standard

Summary						
Site Name	Reference Measured Depth (ft)	Offset Measured Depth (ft)	Distance Between Centres (ft)	Distance Between Ellipses (ft)	Separation Factor	Warning
Offset Well - Wellbore - Design						
SRC-Cletcher Pad Sec.21-T4N-R68W						
SRC-Cletcher 21A (Vert.) - Wellbore #1 - Design #1	750.0	751.0	22.2	19.1	7.057 CC, ES	
SRC-Cletcher 21A (Vert.) - Wellbore #1 - Design #1	900.0	900.9	25.3	21.4	6.618 SF	

Offset Design SRC-Cletcher Pad Sec.21-T4N-R68W - SRC-Cletcher 21A (Vert.) - Wellbore #1 - Design #1												Offset Site Error:	0.0 ft
Survey Program: 0-MWD												Offset Well Error:	0.0 ft
Reference		Offset		Semi Major Axis			Distance						
Measured Depth (ft)	Vertical Depth (ft)	Measured Depth (ft)	Vertical Depth (ft)	Reference (ft)	Offset (ft)	Highside Toolface (°)	Offset Wellbore Centre +N/-S (ft)	+E/-W (ft)	Between Centres (ft)	Between Ellipses (ft)	Minimum Separation (ft)	Separation Factor	Warning
0.0	0.0	1.0	1.0	0.0	0.0	178.56	-22.2	0.6	22.2	22.2	0.00	N/A	
100.0	100.0	101.0	101.0	0.1	0.1	178.56	-22.2	0.6	22.2	22.0	0.23	97.886	
200.0	200.0	201.0	201.0	0.3	0.3	178.56	-22.2	0.6	22.2	21.5	0.68	32.845	
300.0	300.0	301.0	301.0	0.6	0.6	178.56	-22.2	0.6	22.2	21.1	1.13	19.733	
400.0	400.0	401.0	401.0	0.8	0.8	178.56	-22.2	0.6	22.2	20.6	1.58	14.103	
500.0	500.0	501.0	501.0	1.0	1.0	178.56	-22.2	0.6	22.2	20.2	2.03	10.973	
600.0	600.0	601.0	601.0	1.2	1.2	178.56	-22.2	0.6	22.2	19.7	2.47	8.980	
700.0	700.0	701.0	701.0	1.5	1.5	178.56	-22.2	0.6	22.2	19.3	2.92	7.599	
750.0	750.0	751.0	751.0	1.6	1.6	178.56	-22.2	0.6	22.2	19.1	3.15	7.057 CC, ES	
800.0	800.0	801.0	801.0	1.7	1.7	-138.26	-22.2	0.6	22.5	19.2	3.37	6.686	
900.0	899.9	900.9	900.9	1.9	1.9	-143.51	-22.2	0.6	25.3	21.4	3.82	6.618 SF	
1,000.0	999.7	1,000.7	1,000.7	2.1	2.1	-151.10	-22.2	0.6	31.1	26.9	4.26	7.307	
1,100.0	1,099.1	1,100.1	1,100.1	2.4	2.4	-158.17	-22.2	0.6	40.6	35.9	4.71	8.630	
1,200.0	1,198.2	1,199.2	1,199.2	2.6	2.6	-163.61	-22.2	0.6	53.8	48.6	5.15	10.453	
1,300.0	1,296.6	1,297.6	1,297.6	2.9	2.8	-167.51	-22.2	0.6	70.6	65.1	5.58	12.654	
1,400.0	1,394.4	1,395.4	1,395.4	3.3	3.0	-170.27	-22.2	0.6	91.1	85.0	6.01	15.141	
1,500.0	1,491.5	1,492.5	1,492.5	3.7	3.2	-172.24	-22.2	0.6	115.0	108.5	6.44	17.848	
1,514.6	1,505.6	1,506.6	1,506.6	3.8	3.3	-172.48	-22.2	0.6	118.8	112.3	6.51	18.259	
1,600.0	1,587.9	1,588.9	1,588.9	4.2	3.5	-173.67	-22.2	0.6	141.1	134.2	6.90	20.456	
1,700.0	1,684.4	1,685.4	1,685.4	4.6	3.7	-174.67	-22.2	0.6	167.4	160.0	7.37	22.721	
1,800.0	1,780.8	1,781.8	1,781.8	5.1	3.9	-175.39	-22.2	0.6	193.7	185.8	7.84	24.705	
1,900.0	1,877.3	1,878.3	1,878.3	5.6	4.1	-175.94	-22.2	0.6	220.0	211.7	8.32	26.454	
2,000.0	1,973.8	1,974.8	1,974.8	6.1	4.3	-176.38	-22.2	0.6	246.3	237.5	8.79	28.005	
2,100.0	2,070.2	2,071.2	2,071.2	6.7	4.5	-176.73	-22.2	0.6	272.6	263.3	9.28	29.389	
2,200.0	2,166.7	2,167.7	2,167.7	7.2	4.8	-177.02	-22.2	0.6	299.0	289.2	9.76	30.629	

CC - Min centre to center distance or convergent point, SF - min separation factor, ES - min ellipse separation

Company:	Synergy Resources	Local Co-ordinate Reference:	Well SRC-Cletcher 11-21D
Project:	SEC.21-T4N-R68W	TVD Reference:	WELL @ 4948.0ft (Original Well Elev.)
Reference Site:	SRC-Cletcher Pad Sec.21-T4N-R68W	MD Reference:	WELL @ 4948.0ft (Original Well Elev.)
Site Error:	0.0ft	North Reference:	True
Reference Well:	SRC-Cletcher 11-21D	Survey Calculation Method:	Minimum Curvature
Well Error:	0.0ft	Output errors are at	2.00 sigma
Reference Wellbore	SRC-Cletcher 11-21D	Database:	Landmark
Reference Design:	SRC-Cletcher 11-21D Plan #2 (8-29-11)	Offset TVD Reference:	Offset Datum

Offset Design												Offset Site Error:	0.0ft
Survey Program: 0-MWD												Offset Well Error:	0.0ft
Reference		Offset		Semi Major Axis			Distance						
Measured Depth (ft)	Vertical Depth (ft)	Measured Depth (ft)	Vertical Depth (ft)	Reference (ft)	Offset (ft)	Highside Toolface (°)	Offset Wellbore Centre +N/-S (ft)	+E/-W (ft)	Between Centres (ft)	Between Ellipses (ft)	Minimum Separation (ft)	Separation Factor	Warning
2,300.0	2,263.1	2,264.1	2,264.1	7.7	5.0	-177.26	-22.2	0.6	325.3	315.1	10.25	31.747	
2,400.0	2,359.6	2,360.6	2,360.6	8.3	5.2	-177.46	-22.2	0.6	351.7	340.9	10.73	32.759	
2,500.0	2,456.1	2,457.1	2,457.1	8.8	5.4	-177.64	-22.2	0.6	378.0	366.8	11.22	33.679	
2,600.0	2,552.5	2,553.5	2,553.5	9.3	5.6	-177.79	-22.2	0.6	404.4	392.6	11.71	34.518	
2,700.0	2,649.0	2,650.0	2,650.0	9.9	5.8	-177.93	-22.2	0.6	430.7	418.5	12.21	35.288	
2,800.0	2,745.4	2,746.4	2,746.4	10.4	6.1	-178.05	-22.2	0.6	457.1	444.4	12.70	35.994	
2,900.0	2,841.9	2,842.9	2,842.9	10.9	6.3	-178.16	-22.2	0.6	483.4	470.2	13.19	36.646	
3,000.0	2,938.4	2,939.4	2,939.4	11.5	6.5	-178.25	-22.2	0.6	509.8	496.1	13.69	37.249	
3,100.0	3,034.8	3,035.8	3,035.8	12.0	6.7	-178.34	-22.2	0.6	536.2	522.0	14.18	37.808	
3,200.0	3,131.3	3,132.3	3,132.3	12.6	6.9	-178.42	-22.2	0.6	562.5	547.9	14.68	38.328	
3,300.0	3,227.7	3,228.7	3,228.7	13.1	7.1	-178.49	-22.2	0.6	588.9	573.7	15.17	38.813	
3,400.0	3,324.2	3,325.2	3,325.2	13.7	7.4	-178.55	-22.2	0.6	615.3	599.6	15.67	39.265	
3,500.0	3,420.7	3,421.7	3,421.7	14.2	7.6	-178.61	-22.2	0.6	641.6	625.5	16.17	39.689	
3,600.0	3,517.1	3,518.1	3,518.1	14.8	7.8	-178.67	-22.2	0.6	668.0	651.3	16.66	40.086	
3,700.0	3,613.6	3,614.6	3,614.6	15.3	8.0	-178.72	-22.2	0.6	694.4	677.2	17.16	40.460	
3,800.0	3,710.0	3,711.0	3,711.0	15.9	8.2	-178.76	-22.2	0.6	720.7	703.1	17.66	40.811	
3,900.0	3,806.5	3,807.5	3,807.5	16.4	8.4	-178.81	-22.2	0.6	747.1	728.9	18.16	41.142	
4,000.0	3,903.0	3,904.0	3,904.0	17.0	8.7	-178.85	-22.2	0.6	773.5	754.8	18.66	41.455	
4,100.0	3,999.4	4,000.4	4,000.4	17.5	8.9	-178.89	-22.2	0.6	799.8	780.7	19.16	41.751	
4,200.0	4,095.9	4,096.9	4,096.9	18.1	9.1	-178.92	-22.2	0.6	826.2	806.5	19.66	42.032	
4,300.0	4,192.3	4,193.3	4,193.3	18.6	9.3	-178.95	-22.2	0.6	852.6	832.4	20.16	42.298	
4,400.0	4,288.8	4,289.8	4,289.8	19.2	9.5	-178.99	-22.2	0.6	878.9	858.3	20.66	42.550	
4,500.0	4,385.3	4,386.3	4,386.3	19.7	9.7	-179.02	-22.2	0.6	905.3	884.2	21.16	42.790	
4,600.0	4,481.7	4,482.7	4,482.7	20.3	10.0	-179.04	-22.2	0.6	931.7	910.0	21.66	43.019	
4,700.0	4,578.2	4,579.2	4,579.2	20.8	10.2	-179.07	-22.2	0.6	958.1	935.9	22.16	43.237	
4,800.0	4,674.6	4,675.6	4,675.6	21.4	10.4	-179.09	-22.2	0.6	984.4	961.8	22.66	43.444	
4,900.0	4,771.1	4,772.1	4,772.1	21.9	10.6	-179.12	-22.2	0.6	1,010.8	987.6	23.16	43.643	
4,976.0	4,844.4	4,845.4	4,845.4	22.4	10.8	-179.14	-22.2	0.6	1,030.9	1,007.3	23.54	43.788	
5,000.0	4,867.6	4,868.6	4,868.6	22.5	10.8	-179.14	-22.2	0.6	1,037.1	1,013.4	23.68	43.796	
5,100.0	4,964.7	4,965.7	4,965.7	22.9	11.0	-179.17	-22.2	0.6	1,060.9	1,036.7	24.21	43.821	
5,200.0	5,062.6	5,063.6	5,063.6	23.2	11.3	-179.19	-22.2	0.6	1,081.4	1,056.7	24.71	43.765	
5,300.0	5,161.1	5,162.1	5,162.1	23.5	11.5	-179.21	-22.2	0.6	1,098.5	1,073.3	25.17	43.635	
5,400.0	5,260.2	5,261.2	5,261.2	23.8	11.7	-179.22	-22.2	0.6	1,112.0	1,086.4	25.60	43.437	
5,500.0	5,359.6	5,360.6	5,360.6	24.0	11.9	-179.23	-22.2	0.6	1,122.2	1,096.2	25.99	43.173	
5,600.0	5,459.4	5,460.4	5,460.4	24.2	12.2	-179.24	-22.2	0.6	1,128.8	1,102.5	26.34	42.848	
5,700.0	5,559.4	5,560.4	5,560.4	24.3	12.4	-179.24	-22.2	0.6	1,132.0	1,105.3	26.66	42.462	
5,740.6	5,600.0	5,601.0	5,601.0	24.4	12.5	136.84	-22.2	0.6	1,132.3	1,105.5	26.78	42.288	
5,800.0	5,659.4	5,660.4	5,660.4	24.4	12.6	136.84	-22.2	0.6	1,132.3	1,105.3	27.01	41.924	
5,900.0	5,759.4	5,760.4	5,760.4	24.5	12.8	136.84	-22.2	0.6	1,132.3	1,104.9	27.41	41.303	
6,000.0	5,859.4	5,860.4	5,860.4	24.7	13.1	136.84	-22.2	0.6	1,132.3	1,104.5	27.82	40.698	
6,100.0	5,959.4	5,960.4	5,960.4	24.8	13.3	136.84	-22.2	0.6	1,132.3	1,104.0	28.23	40.109	
6,200.0	6,059.4	6,060.4	6,060.4	24.9	13.5	136.84	-22.2	0.6	1,132.3	1,103.6	28.64	39.535	
6,300.0	6,159.4	6,160.4	6,160.4	25.0	13.7	136.84	-22.2	0.6	1,132.3	1,103.2	29.05	38.976	
6,400.0	6,259.4	6,260.4	6,260.4	25.1	14.0	136.84	-22.2	0.6	1,132.3	1,102.8	29.46	38.431	
6,500.0	6,359.4	6,360.4	6,360.4	25.2	14.2	136.84	-22.2	0.6	1,132.3	1,102.4	29.88	37.900	
6,600.0	6,459.4	6,460.4	6,460.4	25.4	14.4	136.84	-22.2	0.6	1,132.3	1,102.0	30.29	37.382	
6,700.0	6,559.4	6,560.4	6,560.4	25.5	14.6	136.84	-22.2	0.6	1,132.3	1,101.6	30.70	36.877	
6,800.0	6,659.4	6,660.4	6,660.4	25.6	14.9	136.84	-22.2	0.6	1,132.3	1,101.2	31.12	36.385	
6,900.0	6,759.4	6,760.4	6,760.4	25.7	15.1	136.84	-22.2	0.6	1,132.3	1,100.7	31.54	35.904	
7,000.0	6,859.4	6,860.4	6,860.4	25.9	15.3	136.84	-22.2	0.6	1,132.3	1,100.3	31.95	35.436	
7,100.0	6,959.4	6,960.4	6,960.4	26.0	15.5	136.84	-22.2	0.6	1,132.3	1,099.9	32.37	34.978	
7,200.0	7,059.4	7,060.4	7,060.4	26.1	15.8	136.84	-22.2	0.6	1,132.3	1,099.5	32.79	34.531	

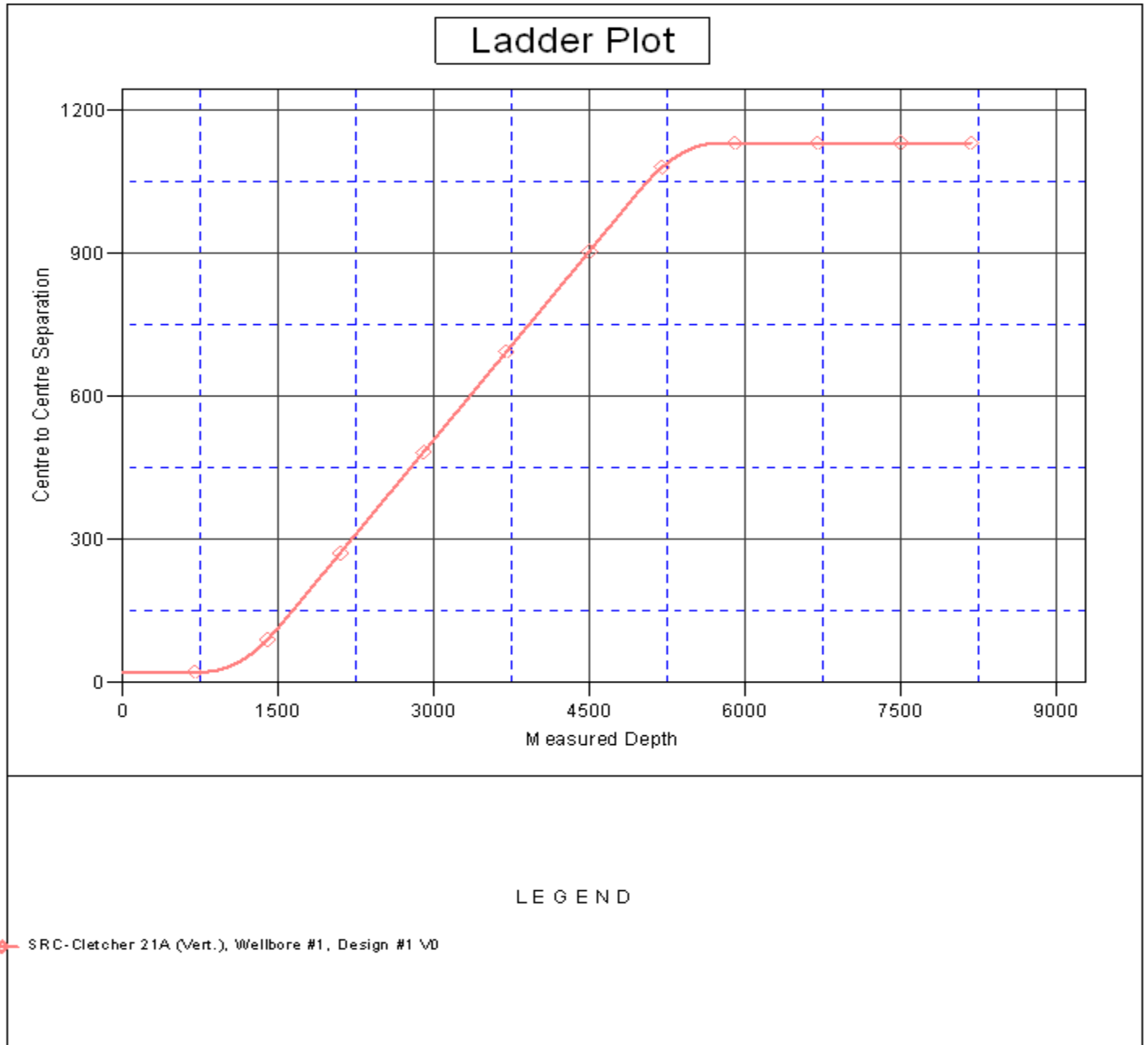
CC - Min centre to center distance or convergent point, SF - min separation factor, ES - min ellipse separation

Company:	Synergy Resources	Local Co-ordinate Reference:	Well SRC-Cletcher 11-21D
Project:	SEC.21-T4N-R68W	TVD Reference:	WELL @ 4948.0ft (Original Well Elev.)
Reference Site:	SRC-Cletcher Pad Sec.21-T4N-R68W	MD Reference:	WELL @ 4948.0ft (Original Well Elev.)
Site Error:	0.0ft	North Reference:	True
Reference Well:	SRC-Cletcher 11-21D	Survey Calculation Method:	Minimum Curvature
Well Error:	0.0ft	Output errors are at	2.00 sigma
Reference Wellbore	SRC-Cletcher 11-21D	Database:	Landmark
Reference Design:	SRC-Cletcher 11-21D Plan #2 (8-29-11)	Offset TVD Reference:	Offset Datum

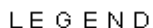
Offset Design SRC-Cletcher Pad Sec.21-T4N-R68W - SRC-Cletcher 21A (Vert.) - Wellbore #1 - Design #1													Offset Site Error: 0.0 ft	
Survey Program: 0-MWD													Offset Well Error: 0.0 ft	
Reference		Offset		Semi Major Axis			Distance							
Measured Depth	Vertical Depth	Measured Depth	Vertical Depth	Reference	Offset	Highside Toolface	Offset Wellbore Centre		Between Centres	Between Ellipses	Minimum Separation	Separation Factor	Warning	
(ft)	(ft)	(ft)	(ft)	(ft)	(ft)	(°)	+N/-S (ft)	+E/-W (ft)	(ft)	(ft)	(ft)			
7,300.0	7,159.4	7,160.4	7,160.4	26.2	16.0	136.84	-22.2	0.6	1,132.3	1,099.1	33.21	34.095		
7,400.0	7,259.4	7,260.4	7,260.4	26.4	16.2	136.84	-22.2	0.6	1,132.3	1,098.6	33.63	33.669		
7,500.0	7,359.4	7,360.4	7,360.4	26.5	16.4	136.84	-22.2	0.6	1,132.3	1,098.2	34.05	33.252		
7,600.0	7,459.4	7,460.4	7,460.4	26.6	16.7	136.84	-22.2	0.6	1,132.3	1,097.8	34.47	32.846		
7,700.0	7,559.4	7,560.4	7,560.4	26.8	16.9	136.84	-22.2	0.6	1,132.3	1,097.4	34.89	32.448		
7,800.0	7,659.4	7,660.4	7,660.4	26.9	17.1	136.84	-22.2	0.6	1,132.3	1,097.0	35.32	32.060		
7,900.0	7,759.4	7,760.4	7,760.4	27.1	17.3	136.84	-22.2	0.6	1,132.3	1,096.5	35.74	31.680		
8,000.0	7,859.4	7,860.4	7,860.4	27.2	17.6	136.84	-22.2	0.6	1,132.3	1,096.1	36.17	31.308		
8,100.0	7,959.4	7,960.4	7,960.4	27.3	17.8	136.84	-22.2	0.6	1,132.3	1,095.7	36.59	30.945		
8,150.1	8,009.4	8,010.4	8,010.4	27.4	17.9	136.84	-22.2	0.6	1,132.3	1,095.5	36.80	30.766		
8,175.6	8,035.0	8,035.0	8,035.0	27.4	17.9	136.84	-22.2	0.6	1,132.3	1,095.4	36.91	30.677		

Company:	Synergy Resources	Local Co-ordinate Reference:	Well SRC-Cletcher 11-21D
Project:	SEC.21-T4N-R68W	TVD Reference:	WELL @ 4948.0ft (Original Well Elev.)
Reference Site:	SRC-Cletcher Pad Sec.21-T4N-R68W	MD Reference:	WELL @ 4948.0ft (Original Well Elev.)
Site Error:	0.0ft	North Reference:	True
Reference Well:	SRC-Cletcher 11-21D	Survey Calculation Method:	Minimum Curvature
Well Error:	0.0ft	Output errors are at	2.00 sigma
Reference Wellbore	SRC-Cletcher 11-21D	Database:	Landmark
Reference Design:	SRC-Cletcher 11-21D Plan #2 (8-29-11)	Offset TVD Reference:	Offset Datum

Reference Depths are relative to WELL @ 4948.0ft (Original Well Elev. Coordinates are relative to: SRC-Cletcher 11-21D
Offset Depths are relative to Offset Datum
Central Meridian is -105.500000 °
Coordinate System is US State Plane 1983, Colorado Northern Zone
Grid Convergence at Surface is: 0.31°



Reference Depths are relative to WELL @ 4948.0ft (Original Well Elev. Coordinates are relative to: SRC-Cletcher 11-21D
Offset Depths are relative to Offset Datum Coordinate System is US State Plane 1983, Colorado Northern Zone
Central Meridian is -105.500000 ° Grid Convergence at Surface is: 0.31°



— SRC-Cletcher 21A (Vert.), Wellbore #1, Design #1 V0