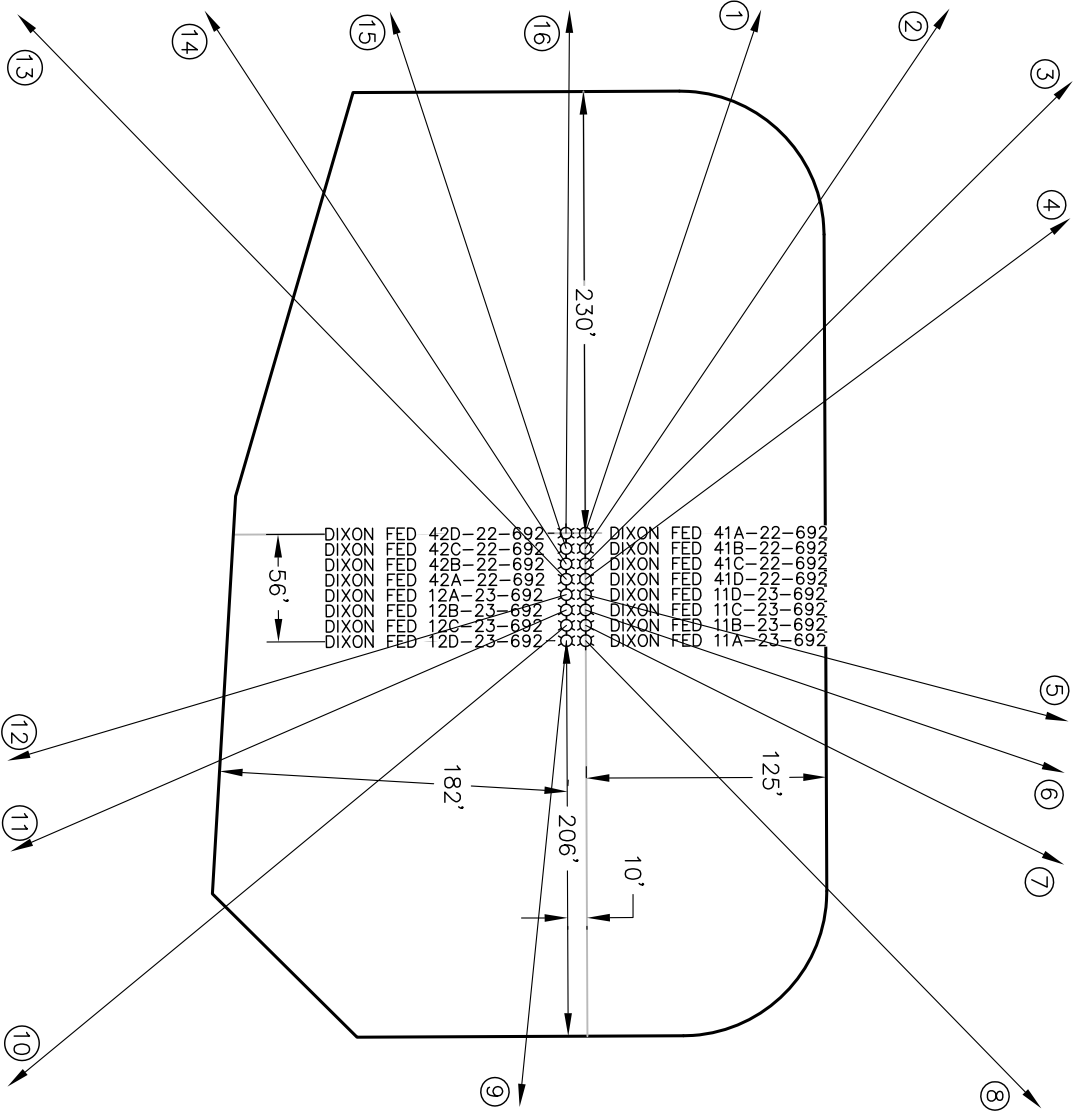
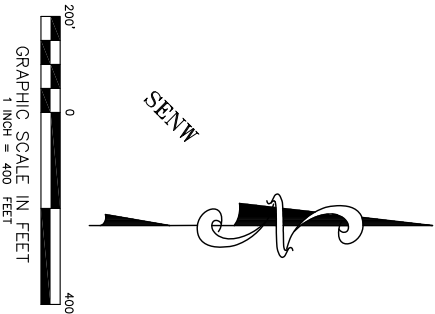
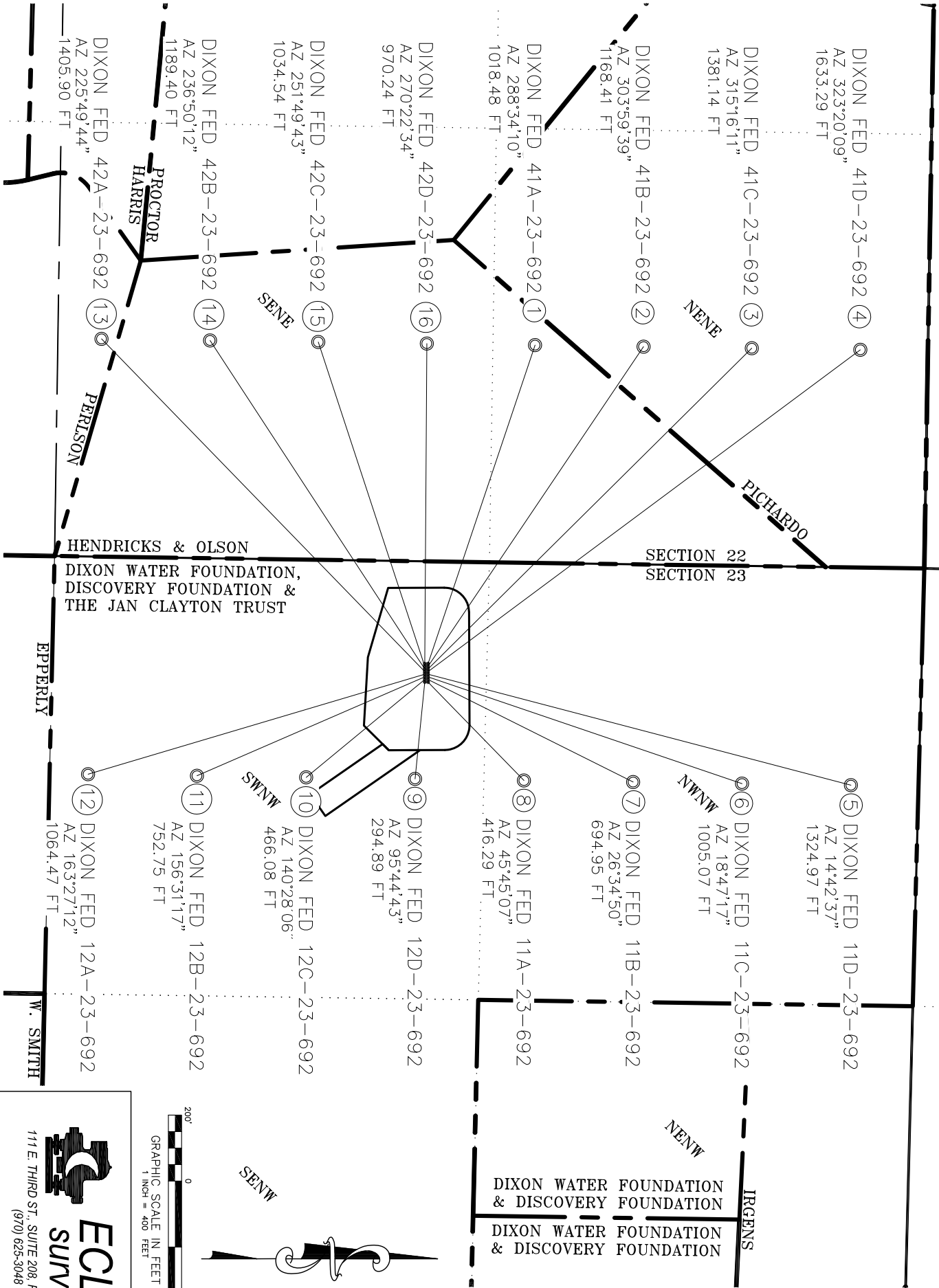


SURFACE HOLE LOCATIONS							BOTTOM HOLE LOCATIONS							
	WELL NAME	FNL	FWL	NORTHING	EASTING	LATITUDE	LONGITUDE		FNL	FEL	NORTHING	EASTING	LATITUDE	LONGITUDE
1	DIXON FED 41A-22-692	1496	310	1619869.9	2395577.8	39.515754	-107.642618		1191	660	1620194.3	2394612.4	39.516581	-107.646067
2	DIXON FED 41B-22-692	1496	318	1619870.0	2395585.8	39.515754	-107.642590		862	660	1620523.2	2394617.1	39.517484	-107.646077
3	DIXON FED 41C-22-692	1495	326	1619870.0	2395593.8	39.515755	-107.642562		534	660	1620851.2	2394621.8	39.518385	-107.646088
4	DIXON FED 41D-22-692	1495	334	1619870.0	2395601.8	39.515755	-107.642533		205	660	1621180.2	2394626.6	39.519288	-107.646099
5	DIXON FED 11D-23-692	1495	342	1619870.1	2395609.8	39.515756	-107.642505		205	660 FWL	1621151.6	2395946.3	39.519295	-107.641420
6	DIXON FED 11C-23-692	1495	350	1619870.1	2395617.8	39.515757	-107.642477		535	660 FWL	1620821.6	2395941.5	39.518389	-107.641409
7	DIXON FED 11B-23-692	1494	358	1619870.1	2395625.8	39.515757	-107.642448		865	660 FWL	1620491.6	2395936.8	39.517483	-107.641398
8	DIXON FED 11A-23-692	1494	366	1619870.2	2395633.8	39.515758	-107.642420		1196	660 FWL	1620160.6	2395932.0	39.516574	-107.641387
9	DIXON FED 12D-23-692	1504	366	1619860.2	2395633.9	39.515730	-107.642419		1526	660 FWL	1619830.6	2395927.3	39.515668	-107.641377
10	DIXON FED 12C-23-692	1504	358	1619860.1	2395625.9	39.515730	-107.642447		1856	660 FWL	1619500.7	2395922.5	39.514762	-107.641366
11	DIXON FED 12B-23-692	1505	350	1619860.1	2395617.9	39.515729	-107.642476		2187	660 FWL	1619169.7	2395917.8	39.513854	-107.641355
12	DIXON FED 12A-23-692	1505	342	1619860.1	2395609.9	39.515729	-107.642504		2517	660 FWL	1618839.7	2395913.0	39.512948	-107.641344
13	DIXON FED 42A-22-692	1505	334	1619860.0	2395601.9	39.515728	-107.642532		2505	660	1618880.4	2394593.5	39.512974	-107.646024
14	DIXON FED 42B-22-692	1505	326	1619860.0	2395593.9	39.515727	-107.642561		2176	660	1619209.4	2394598.2	39.513877	-107.646034
15	DIXON FED 42C-22-692	1506	318	1619860.0	2395585.9	39.515727	-107.642589		1848	660	1619537.3	2394602.9	39.514778	-107.646045
16	DIXON FED 42D-22-692	1506	310	1619859.9	2395577.9	39.515726	-107.642617		1519	660	1619866.3	2394607.7	39.515681	-107.646056



WELL INTERFERENCE EXHIBIT

DIXON SWNW-23-692

NAD 83 COLORADO CENTRAL ZONE
SURFACE HOLE LOCATIONS

ECLIPSE
surveying

111 E. THIRD ST., SUITE 208 RIFLE, CO 81650
(970) 625-3048

REV. DATE: 8/11/11
SCALE: 1"=400'
DATE: 9/14/10
SHEET: 1 OF 1
PROJECT: DIXON SWNW
DFT: TAB

Bill Barrett Corporation

SW1/4NW1/4, SECTION 23
T. 6 S., R. 92 W. of the 6th. P.M.
GARFIELD COUNTY, COLORADO

*NOTE: THE FINISHED PAD ELEVATION IS 5871.9'