

T2S, R104W, 6th P.M.

Encana OIL & GAS (USA) INC.

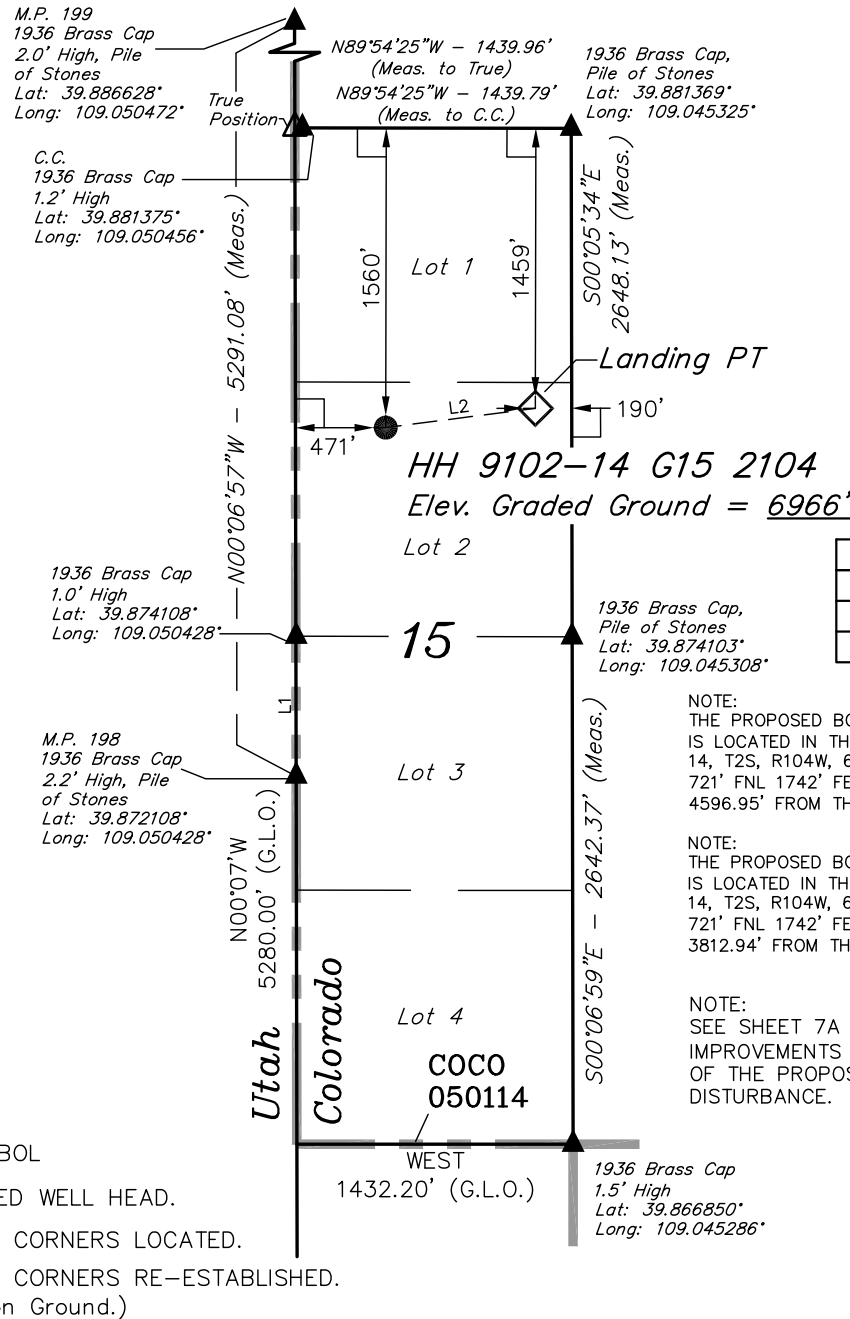
Well location, HH 9102-14 G15 2104 (SURFACE LOCATION), located as shown in Lot 2 of Section 15, T2S, R104W, 6th P.M., Rio Blanco County, Colorado.

### BASIS OF ELEVATION

SPOT ELEVATION LOCATED AT DRILL HOLE IN THE NW 1/4 OF SECTION 12, T2S, R104W, 6th P.M. TAKEN FROM THE WEAVER RIDGE QUADRANGLE, UTAH-COLORADO, 7.5 MINUTE SERIES (TOPOGRAPHICAL MAP) PUBLISHED BY THE UNITED STATES DEPARTMENT OF THE INTERIOR, GEOLOGICAL SURVEY. SAID ELEVATION IS MARKED AS BEING 6892 FEET.

### BASIS OF BEARINGS

BASIS OF BEARINGS IS A G.P.S. OBSERVATION.



LINE TABLE		
LINE	BEARING	LENGTH
L1	N00°00'55"E	728.89'
L2	N82°38'51"E	785.40'

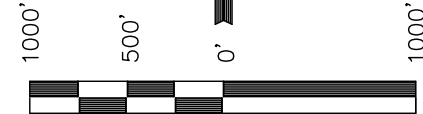
NOTE:  
THE PROPOSED BOTTOM HOLE FOR THIS WELL  
IS LOCATED IN THE NW 1/4 NE 1/4 OF SECTION  
14, T2S, R104W, 6th P.M. AT A DISTANCE OF  
721' FNL 1742' FEL. IT BEARS N79°32'20"E  
4596.95' FROM THE PROPOSED WELL HEAD.

NOTE:  
THE PROPOSED BOTTOM HOLE FOR THIS WELL  
IS LOCATED IN THE NW 1/4 NE 1/4 OF SECTION  
14, T2S, R104W, 6th P.M. AT A DISTANCE OF  
721' FNL 1742' FEL. IT BEARS N78°53'56"E  
3812.94' FROM THE PROPOSED LANDING PT.

NOTE:  
SEE SHEET 7A FOR EXISTING  
IMPROVEMENTS WITHIN 200'  
OF THE PROPOSED WELL  
DISTURBANCE.



Sheet 1a of 11



SCALE

### CERTIFICATE

THIS IS TO CERTIFY THAT THE ABOVE PLAT WAS PREPARED FROM  
FIELD NOTES OF ACTUAL SURVEYS MADE BY ME OR UNDER MY  
SUPERVISION AND THAT THE SAME ARE TRUE AND CORRECT TO THE  
BEST OF MY KNOWLEDGE AND BELIEF.

17492  
REGISTERED LAND SURVEYOR  
REGISTRATION NO. 17492  
STATE OF COLORADO  
06-07-11

### LEGEND:

- └─┘ = 90° SYMBOL
- = PROPOSED WELL HEAD.
- ▲ = SECTION CORNERS LOCATED.
- △ = SECTION CORNERS RE-ESTABLISHED.  
(Not Set on Ground.)

PDOP = 2.2

NAD 83 (LANDING PT)	NAD 83 (SURFACE LOCATION)
LATITUDE = 39°52'38.52" (39.877367)	LATITUDE = 39°52'37.52" (39.877089)
LONGITUDE = 109°02'45.57" (109.045992)	LONGITUDE = 109°02'55.56" (109.048767)
NAD 27 (LANDING PT)	NAD 27 (SURFACE LOCATION)
LATITUDE = 39°52'38.63" (39.877397)	LATITUDE = 39°52'37.63" (39.877119)
LONGITUDE = 109°02'43.18" (109.045328)	LONGITUDE = 109°02'53.16" (109.048100)

UINTAH ENGINEERING & LAND SURVEYING		
85 SOUTH 200 EAST - VERNAL, UTAH 84078		
(435) 789-1017		
SCALE 1" = 1000'	DATE SURVEYED: 06-26-11	DATE DRAWN: 06-28-11
PARTY B.B. T.M. C.H.	REFERENCES G.L.O. PLAT	
WEATHER WARM	FILE Encana OIL & GAS (USA) INC.	

T2S, R104W, 6th P.M.

Encana OIL & GAS (USA) INC.

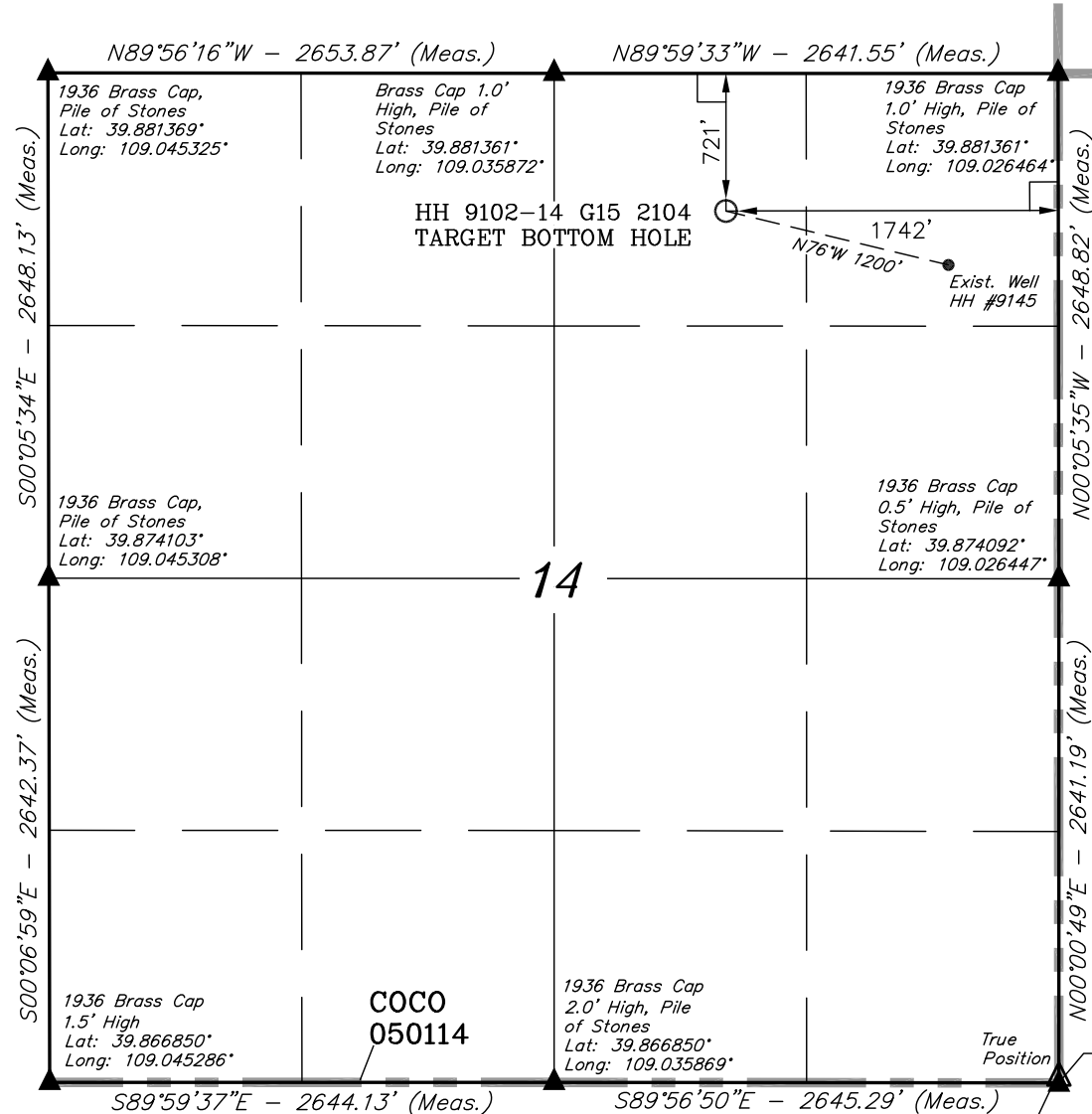
Well location, HH 9102-14 G15 2104 (TARGET BOTTOM HOLE), located as shown in the NW 1/4 NE 1/4 of Section 14, T2S, R104W, 6th P.M., Rio Blanco County, Colorado.

### BASIS OF ELEVATION

SPOT ELEVATION LOCATED AT DRILL HOLE IN THE NW 1/4 OF SECTION 12, T2S, R104W, 6th P.M. TAKEN FROM THE WEAVER RIDGE QUADRANGLE, UTAH-COLORADO, 7.5 MINUTE SERIES (TOPOGRAPHICAL MAP) PUBLISHED BY THE UNITED STATES DEPARTMENT OF THE INTERIOR, GEOLOGICAL SURVEY. SAID ELEVATION IS MARKED AS BEING 6892 FEET.

### BASIS OF BEARINGS

BASIS OF BEARINGS IS A G.P.S. OBSERVATION.



NOTE:  
THE PROPOSED BOTTOM HOLE FOR THIS WELL BEARS N79°32'20"E 4596.95' FROM THE PROPOSED WELL HEAD WHICH IS LOCATED IN LOT 2 OF SECTION 15, T2S, R104W, 6th P.M. AT A DISTANCE OF 1560' FNL 471' FWL.

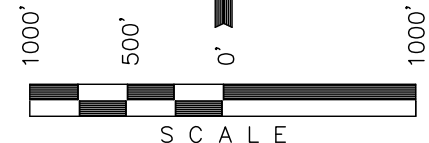
### LEGEND:

- └─┘ = 90° SYMBOL
- = PROPOSED WELL HEAD.
- ▲ = SECTION CORNERS LOCATED.

<b>NAD 83 (TARGET BOTTOM HOLE)</b>	
LATITUDE = 39°52'45.78" (39.879383)	
LONGITUDE = 109°01'57.59" (109.032664)	
<b>NAD 27 (TARGET BOTTOM HOLE)</b>	
LATITUDE = 39°52'45.89" (39.879414)	
LONGITUDE = 109°01'55.20" (109.032000)	



Sheet 1b of 11



### CERTIFICATE

THIS IS TO CERTIFY THAT THE ABOVE PLAT WAS PREPARED FROM FIELD NOTES OF ACTUAL SURVEYS MADE BY ME OR UNDER MY SUPERVISION AND THAT THE SAME ARE TRUE AND CORRECT TO THE BEST OF MY KNOWLEDGE AND BELIEF.

REGISTERED LAND SURVEYOR  
REGISTRATION NO. 17492  
STATE OF COLORADO  
06-28-11

Revised: 08-26-11 D.R.B.  
Revised: 08-23-11 D.R.B.

**UINTAH ENGINEERING & LAND SURVEYING**  
85 SOUTH 200 EAST - VERNAL, UTAH 84078  
(435) 789-1017

SCALE 1" = 1000'	DATE SURVEYED: 06-26-11	DATE DRAWN: 06-28-11
PARTY B.B. T.M. C.H.	REFERENCES G.L.O. PLAT	
WEATHER WARM	FILE Encana OIL & GAS (USA) INC.	